

Love your Kitchen!



Photography by Letitia Clark

Ocean City Residence

Sugarbridge
Custom Kitchens & Baths

Visit us on our website: www.Sugarbridge.com

VAN CLEVE PAVILION
1604 E. LANCASTER AVENUE • PAOLI, PA • 19301 • 484-318-8367

JULY 2021

COUNTY LINES

Your guide to unique places, interesting events, fine dining, great shopping
and the special lifestyle of Southeastern Pennsylvania and Northern Delaware

Celebrating **44** Years of Publishing!
\$3.95

2021-2022 Guidebook





Award-Winning Care For Your Ears, Nose & Throat

Providing the Southeast Pennsylvania community with progressive, patient-focused care, Pinnacle ENT Associates are a team of doctors, surgeons, audiologists, speech pathologists and physician assistants versed in addressing a wide range of ear, nose, throat, allergy and audiology issues in both adults and children.



Ears



Nose



Throat



Allergy



Audiology



SUSPECT HEARING LOSS?
Take our **3-minute** hearing test!



Pinnacle ENT
ASSOCIATES LLC
EAR, NOSE & THROAT, ALLERGY
& AUDIOLOGY SERVICES

Request an appointment today!
(610) 616-5085
www.pentadocs.com



WEALTH MANAGEMENT WITH WISDOM & CARE

PATTI BRENNAN, CFP®



NATIONALLY ACCLAIMED for Her Wisdom in Wealth Management...
LOCALLY RECOGNIZED for Her Care and Service to the Community...

PATTI CURRENTLY SERVES AS A BOARD OF DIRECTOR FOR CHESTER COUNTY HOSPITAL AND HEALTH SYSTEM, YMCA OF GREATER BRANDYWINE AND CUDDLE MY KIDS. SHE IS A FORMER BOARD MEMBER OF THE CHESTER COUNTY ECONOMIC DEVELOPMENT COUNCIL, AND SEEDCO (APPROVING SBA LOANS).

1045 ANDREW DRIVE, SUITE A
WEST CHESTER, PA 19380
610.429.9050

KeyFinancialInc.com



KEY FINANCIAL, INC.
Wealth Management With Wisdom & Care

Securities offered through Royal Alliance Associates, Inc., member FINRA/SIPC. Insurance services offered through Patricia Brennan are independent of Royal Alliance Associates, Inc. Advisory services offered through Key Financial, Inc., a registered investment advisor, not affiliated with Royal Alliance Associates, Inc.
The Forbes ranking of America's Top Wealth Advisors, is based on an algorithm of qualitative and quantitative data, rating thousands of wealth advisors with a minimum of seven years of experience and weighing factors like revenue trends, assets under management, compliance records, industry experience and best practices learned through telephone and in-person interviews. There is no fee in exchange for rankings.
The "Barron's Winner's Circle Top 1200" is a select group of individuals who are screened on a number of different criteria. Among the factors that advisors are assessed include: their assets under management, revenues, the quality of service provided to clients, and their adherence to high standards of industry regulatory compliance. Portfolio performance is not a factor. Please see Barrons.com for more information.
The "Barron's Winner's Circle Top 100" is a select group of individuals who are screened on a number of different criteria. Among factors the survey takes into consideration are the overall size and success of practices, the quality of service provided to clients, adherence to high standards of industry regulatory compliance, and leadership in "best practices" of wealth management. Portfolio performance is not a factor. Please see Barrons.com for more information.



**BERKSHIRE
HATHAWAY**
HomeServices
Fox & Roach, REALTORS®

HOLLY GROSS GROUP



Residential • Farms • Land • Commercial

Holly Gross Stephen Gross Stewart Gross
Jenny Cassidy Michael Mummert Herb Schwabe Harry Price

HollyGrossGroup.com | 610-430-3030



Fox Hill Farm | East Marlborough Township

Fox Hill Farm is set on 80.2 bucolic acres complete with a fabulous house, pool, pond, tennis court, barn, indoor and outdoor arenas plus a dressage ring, and cross-country course. The Archer & Buchanan designed home of 10,000 square feet represents the epitome of gracious country living. The 7 bedroom, 5.4 bath stone home features rare details like Italian marble floors and 200 year old wood floors from a French chateau. The workmanship in this home is spectacular! The large Kitchen features high-end appliances and marble counters. The Master Suite is really special! The Lower Level has a large Wine Cellar, Exercise Room, Theater, and Game Room. The Barn and Indoor Arena offer 27 stalls. Great equestrian community and located in the nationally ranked Unionville-Chadds Ford School District!

\$6,875,000



Bittersweet Drive | Pocopson Township

Set on 7.3 exceedingly private acres in Pocopson Township, sits this spectacular 18,000 square foot, tutor style home featuring a spectacular main level Master Suite with "His" and "Her" bathrooms, Walk-in Closets, a private Office, and a large Bedroom. The home boasts 5 Bedrooms, 8.3 Bathrooms plus a four room guest/in-law suite easily accessed by way of the home's three level elevator. The main level Living Room, Dining Room, incredible Kitchen, and stellar Family Room must be seen to be appreciated! All of the Bedrooms enjoy En-Suite Bathrooms. The Lower Level features an amazing Wine Cellar, Theater, Game Room and second Family Room. This fabulous property is located with easy access to Wilmington plus set in the nationally ranked Unionville-Chadds Ford School District!

\$4,995,000



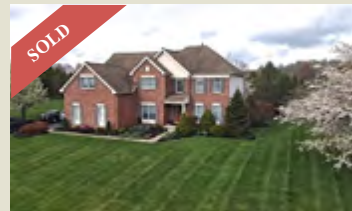
Newlin Township

5 BR, 4.1 BA | 19 Ac. | Private Pool
Archer/Buchanan Design | Unionville Sch.
6 Stall Barn w/Apt. | Near ChesLen Preserve
\$1,675,000



West Bradford Township

5 BR, 4.2 BA | Downington Schools
Original model home | Great Value
Chef's Kitchen | 2,949 Acres | Conservatory
\$1,110,000



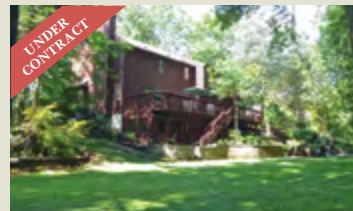
East Bradford Township

4 BR, 2.2 BA | 1 Acre | Two Offices!
Fabulous \$200K Finished Lower Level!
Great Master Suite | Chef's Kitchen
\$849,000



East Fallowfield Township

4 BR, 3.1 BA | 8.9 Private Acres
Owner Built! | Possible In-Law Suite
Large 4 Stall Barn | Three Paddocks
\$750,000



East Bradford

5 BR, 3.1 BA | 2 Private Acres
Open Floor Plan | Large Family Room
Newer Kitchen | West Chester Schools
\$599,900



Philadelphia Condo

Cityview Condos | MBR w/Private Bath
Guest BR w/Bath | Art Museum Area
\$349,900



Valley Township

4 BR, 2 BA | .23 Acres | Spacious!
In Oakcrest Community! | Chef's Kitchen!
Wonderful Master Ste | Finished Basement
\$314,000



East Bradford Township

1 BR, 1.0 BA | Bradford Square
Gas Fireplace | Ground Level
Stainless Appliances & New Granite
\$199,900

IS YOUR HOME READY FOR A MAKEOVER?

TAKE ADVANTAGE OF OUR COMPLIMENTARY IN-HOME DESIGN SERVICES!

Do you want to update your favorite room or transform your entire home? Our professional Design Consultants are dedicated to bringing your unique vision to life and are ready to guide you through every step. Call to set up a complimentary in-store consultation. After your initial meeting, you and your designer will collaborate on your ideas and devise a comprehensive plan for your home, business or commercial property.

Call today to set up an in-store consultation. 888-875-8955

Jennie Castellente, ext 3236
Christiana, DE

Nancy Burton, ext 3524
Wilmington, DE

Grace Sagnor, ext 3228
Wilmington, DE

TOP 100
U.S. FURNITURE
STORES

Furniture Today



JOHNNY JANOSIK

WORLD OF FURNITURE & MATTRESSES
THE EASTERN SHORE'S LARGEST FURNITURE STORE • EST. 1953

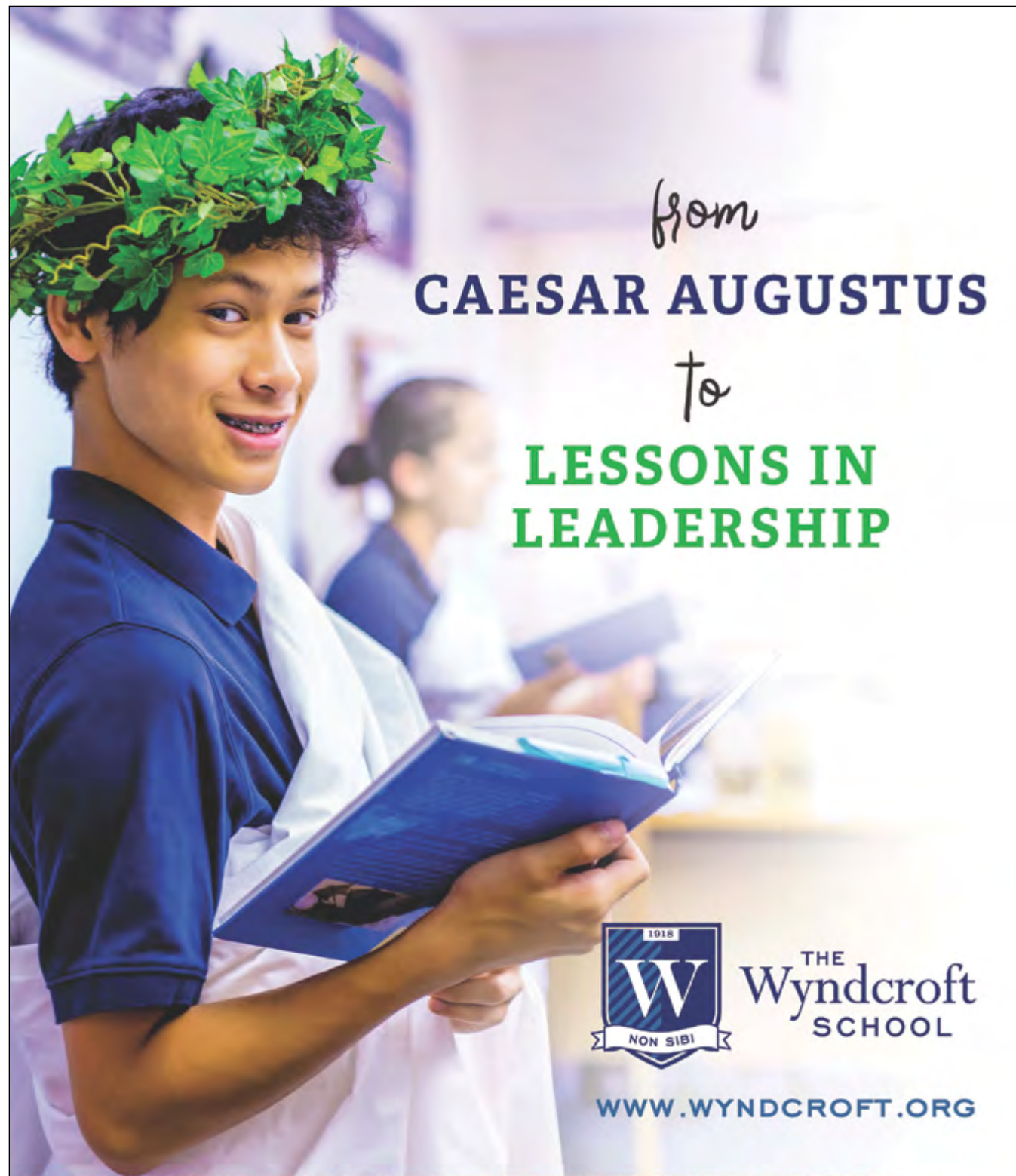
www.johnnyjanosik.com

LAUREL, DE 11151 Trussum Pond Rd. Laurel, DE (302) 875-5955 / TOLL FREE 888-875-8955
DOVER, DE 4719 South DuPont Hwy. Dover, DE (302) 697-7799 / TOLL FREE 888-875-9355
WILMINGTON, DE 3040 Brandywine Pkwy. Wilmington, DE / TOLL FREE 888-875-8955
CHRISTIANA, DE 1281 Churchmans Rd. Newark, DE / TOLL FREE 888-875-8955


CLEARANCE CENTER, LAUREL 11151 Trussum Pond Rd. Laurel, DE
CLEARANCE CENTER, DOVER 2230 South DuPont Hwy. Dover, DE



QUALITY NAME BRAND FURNITURE & MATTRESSES AT THE GUARANTEED LOWEST PRICES



from
CAESAR AUGUSTUS
to
LESSONS IN LEADERSHIP

 **THE Wyndcroft SCHOOL**

WWW.WYNDCROFT.ORG

1395 Wilson Street, Pottstown, Pa 19464 | 610-326-0544
Transportation is available from Pottstown, Pottsgrove, Owen J. Roberts, Spring-Ford, Daniel Boone, Boyertown and other surrounding school districts.

KENT COUNTY LODGING




**COME FOR AN EVENT,
STAY FOR THE WEEKEND!**

Farmstay B&B
 Grass-fed Angus Beef
 Award Winning Wines
 Tasting Room Open Daily
 Special Events Venue
 Wine Club

CrowVineyardandWinery.com
 302.304.0551 | info@crowvineyard.com
 12441 Vansants Corner Road
 Kennedyville, MD 21645

f i

Sip Stay See Savor

Rated #1 2014-2020 by Trip Advisor!




70 blissful acres...
 come and find
 your zen with us!

410.639.7779 huntingfield.com
 Rock Hall, Maryland




**EASTERN SHORE WATERFRONT RETREAT
BED & BREAKFAST**

Weddings – Events – Corporate Retreats

**10568 Cliff Rd.
 Chestertown, MD 21620
 410.778.5943
 greatoakmd.com**

A Romantic Maryland Bed and Breakfast
 You'll Never Want to Leave




B

410.778.1860
 25227 Chestertown Rd.
 Chestertown, MD 21620
 bramptoninn.com
"...making an art of service."

**Summertime
and the Livin' is Easy...**

*Come Visit Wide Open Spaces
and Charming Inns of
Kent County!*

CHESTERTOWN

Brampton Bed and Breakfast Inn
www.bramptoninn.com

Great Oak Manor
www.greatoakmd.com

Simply Bed & Bread
www.simplybedandbread.com

The Inn at Mitchell House
www.innatmitchellhouse.com

The White Swan Tavern
www.whiteswantavern.com

GEORGETOWN

Kitty Knight House
www.kittyknight.com

ROCK HALL

Bay Breeze Inn
www.baybreezeinn.com

Carriage House
www.carriagehousemd.com

Cinnamon By The Bay
www.cinnamonbythebay.com

High Tide Inn
www.thehightideinn.com

Inn at Huntingfield Creek
www.huntingfield.com

Inn at Osprey Point
www.ospreypoint.com

Inn at Haven Harbour
www.havenharbour.com

Mariner's Motel
www.marinermotelmd.com

Spring Cove Manor
springcovemanor.com

KENNEDYVILLE

Crow Farmstay B&B & Winery
www.crowfarmmd.com

FOR MORE INFORMATION
www.kentcounty.com/lodging



CELEBRATING

80
years

Chester County DAY

➤ HOUSE TOUR ◀

*A tour of Chester County's most
beautiful homes, exquisite gardens
and historic landmarks*

A CHESTER COUNTY TRADITION



B&D
BUILDERS
LLC
Built Right or Not at All

Home is the setting of your story. We ensure
every birthday, every dinner party, every lazy
Sunday afternoon is a chapter to remember.

717.687.0292 | BandDBuilders.com

ALWAYS THE FIRST SATURDAY IN OCTOBER
OCTOBER 2, 2021

*The 2021 house tour will feature homes in the
Southwest Chester County area*

Tickets may be purchased online at ChesterCountyDay.com
For more information: 610.431.5054

BENEFITTING
 Penn Medicine
Chester County Hospital



from the EDITOR

Yay, July! School is out, summer is in full swing, and we're ready to be out and about. Our Annual Guidebook is here to help you find the best our area has to offer.

We'll tour *County Lines* country and beyond—Chester County, Delco, the Main Line, Lancaster County, Delaware, and Maryland's Chesapeake attractions. Find out what's happening at major destinations—Longwood Gardens, Brandywine River Museum of Art and Winterthur Museum—plus smaller pleasures, including music in West Chester, summer dining in Media and Barry's Car Barn in Lancaster County.

Then join us for "Family Fun in the Poconos" and "No Need to Pack to Visit Bucks County." We've got recommendations for four Getaways beyond Pennsylvania—Colonial Williamsburg, VA, Corning, NY, Berkeley Springs, WV, and Grounds for Sculpture in Central New Jersey.

Closer to home, check out Carol Metzker's "Growing Rainbows: Local Flower Farms" to discover fields of beauty, including some that offer U-Pick events. In "Meet Me at the Farm Market," find places to score local fruit, vegetables and more as you support local farmers.

Skim then save, Marci Tomassone's "Fall Guide to the Arts & Outdoor Concerts." And keep checking our events coverage as more performances are added. After 18 months of pent-up demand, tickets will sell fast.

Also noteworthy, the local schools are one of our area's major attractions, most with active sports teams. Malvern Prep, Agnes Irwin School, Episcopal Academy, Tatnall School, Bishop Shanahan High School and others won titles and sent well-prepared athletes to college this year. Learn more in our "Sports Update," and maybe you'll see these athletes on ESPN in years to come.

For those new to our region, we offer a handy Newcomers Guide to top local businesses, services and organizations. And, as always, we have the Best Things to Do each month.

Thank you for reading this issue. We hope you enjoy rediscovering summer fun.

Jo Anne Durako
Editor

COMING IN August

THE GOOD LIFE
Health Features • Pets
55+ and Senior Communities
Delaware County Focus • Wedding Venues
Mark Your Calendar

COUNTY LINES MAGAZINE

July 2021
Volumes XLIV Number 11

PUBLISHER
Edwin Malet

EDITOR
Jo Anne Durako

ART DIRECTOR
Harvey Walls

ASSOCIATE EDITOR
Marci Tomassone

ASSISTANT EDITOR
Madison Meinel

FOOD EDITOR
Alyssa Thayer

ACCOUNT EXECUTIVES
Susan Gillespie
Kim Ross
Kaitlyn Beltz

BUSINESS MANAGER
Debra M. French

CONTRIBUTING WRITERS
Laurel Anderson
George Fitzpatrick / Matt Freeman
Emily Hart / Carol Metzker
Jessica Roberts / Cindy Walker

CONTRIBUTING PHOTOGRAPHERS
Brenda Carpenter
Wil Moore / Timlyn Vaughan

CONTACT US AT
ValleyDel Publications, Inc.
515 S. Franklin St., Ste. 100
West Chester, PA 19382.
610-918-9300. Info@ValleyDel.com
Subscriptions: \$39/print; \$12/digital
Advertising: 610-918-9300

TO GET OUR NEWSLETTER
Send an email to Info@ValleyDel.com

To find County Lines, check our website's "Get A Copy" page, pick one up at Main Point Books, Wellington Square Bookshop, Reads & Company and other newsstands, buy one at Wegmans, or visit advertisers listed in the Index.



County Lines Vols. XLV No. 11. Copyright, 2021 by ValleyDel Publications. All rights reserved. *County Lines* and *County Lines Magazine* (ISSN 0195-4121) are registered names of ValleyDel Publications, Inc. Use of these names without the consent of ValleyDel Publications, Inc. may subject the infringer to penalty and suit as provided by law.

CountyLinesMagazine.com



RKA |  | RANIERI & KERNS ASSOCIATES

RKABUILDERS.COM > 610.520.9838

WALTER J. COOK JEWELER



LET'S CONNECT

Celebrating 75 Years

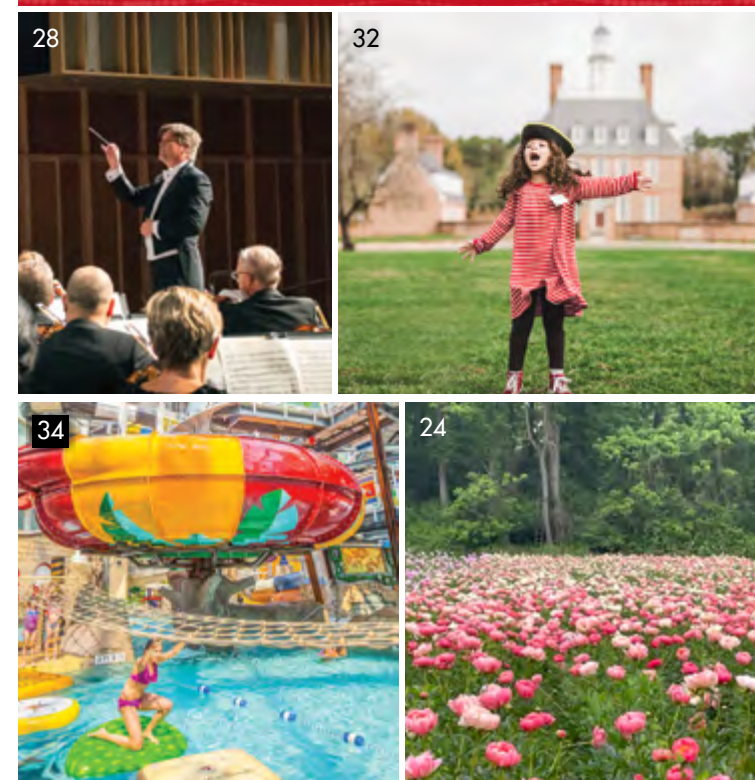
36 Chestnut Road | Paoli, PA 19301 | 610.644.5347

walterjcookjeweler.com

CONTENTS

VOLUME 44, NUMBER 11 ★ JULY 2021

COUNTY LINES
MAGAZINE



- 23 **MEET ME AT THE FARM MARKET**
Discover something new every week at your local, or not, farm market.
- 24 **GROWING RAINBOWS: LOCAL FLOWER FARMS**
There's more than golden blooms at these local treasures.
Carol Metzker
- 28 **FALL GUIDE TO THE ARTS & OUTDOOR CONCERTS**
Curtains! Lights! On with the show!
Edited by Marci Tomassone
- 32 **GETAWAY BEYOND PA**
There's plenty to explore during a weekend getaway in our neighboring states.
Rachel Thompson
- 34 **RECENT DISCOVERIES**
34 Family Fun in the Poconos
36 Visit Bucks County
Madison Meinel
- 38 **A YEAR-ROUND GUIDE TO COUNTY LINES COUNTRY**
Our annual curated tour of the best in our area
40 Daytrips & Outings
40 Start with the Big Three
42 Explore Chester County
44 Drive to Delaware
46 Rediscover Lancaster County
48 Main Line & Beyond
50 Head for Maryland
52 More Great Places for Outings
53 Selected Nature Centers, Parks & Gardens
55 Historic Sites
57 Museums & Special Interest Museums
- 59 **NEWCOMER'S GUIDE**
Check out local businesses, services and organizations in this handy guide..
- 68 **SCHOOL SPORTS UPDATE**
Young athletes choose their colleges during a challenging season
Edwin Malet

departments

- 15 JULY PICKS
- 16 BEST LOCAL EVENTS
- 73 FOOD NEWS
- 74 INDEX

Living to the Power of You



SAGELIFE disrupts the negative paradigms around aging; outdated mindsets that have been barriers to recognizing community living as an aspirational move; as the wisest choice for aging well.

RETIREMENT LIVING, SUPPORTIVE LIVING, AND MEMORY CARE

There's never been a better time to make a move!

Give us a call and talk to us about how you want to live.

ECHO LAKE

MALVERN, PA
LivingAtEchoLake.com
484-568-4777
Retirement Living | Assisted Living | Memory Care

PLUSH MILLS

WALLINGFORD, PA
PlushMills.com
610-690-1630
Independent & Supportive Living

DAYLESFORD CROSSING

PAOLI, PA
DaylesfordCrossing.com
610-640-4000
Supportive Living & Memory Care

KYFFIN GROVE

NORTH WALES, PA
KyffinGrove.com
267-460-8100
Supportive Living & Memory Care



[July Picks]

Our Picks for top events this month

Shakespeare at Stoneleigh— *A Midsummer Night's Dream*

July 24

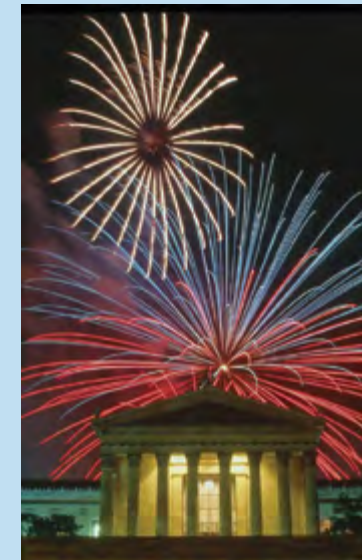
Grab your blanket or lawn chair, bring a picnic and settle in for this unique, open-air theater experience, a delight for the whole family. No glass containers or pets are allowed in the garden, and please “leave no trace”—pack your own trash out. Rain date, July 25. *Stoneleigh: A Natural Garden*, 1829 E. County Line Rd., Villanova. Gates open for picnicking at 6 p.m., performance 7 to 8:30 p.m. \$15–\$35. 610-353-5587; NatLands.org.



Fireworks are Back!

Through September 25

Plans are evolving, but here are a few that are scheduled. Be sure to check websites for updates. **July 3, 4 & 17, Aug. 7, Sept. 5 & 25**, Fireworks & Fountains at Longwood Gardens, Longwood.org; **July 4**, Tredyffrin/Easttown Concert & Fireworks at Wilson Farm Park, Tredyffrin.org/Services/Parks-Recreation; Wawa Welcome America, WelcomeAmerica.com; Independence Day Celebration & Fireworks, Chesapeake City, MD, ChesapeakeCity.com; **July 16**, Malvern Fire Company Fair, MalvernFireCo.com; **July 30**, Kimberton Fair, KimbertonFair.org.



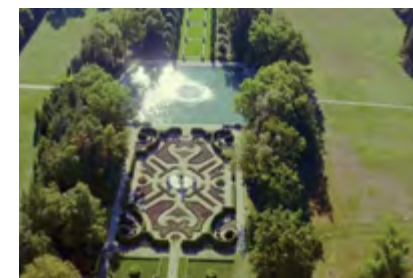
Uptown! at Knauer Performing Arts Center

Through September 30

Get your tickets now! **July 31**, Live at the Fillmore—Allman Bros Tribute; **Aug. 14**, Echoes, The American Pink Floyd; **Aug. 21**, Talking Sticks and Brazilian Vibes; **Sept. 17**, Kasim Sulton; **Sept. 18**, Let's Hang On America's #1 Frankie Valli Tribute Show; **Sept. 24**, Kashmir—Tribute To Led Zeppelin; **Sept. 30**, Into The Mystic: Tribute To Van Morrison. 226 N. High St., West Chester. Check website for tickets and times. UptownWestChester.org.

Brandywine Valley Adventure Pass

Through October 31



The Greater Wilmington Convention and Visitors Bureau is introducing a new pass, enabling visitors to create their own itinerary with admission to the attractions they select,

all at a discount. The all-digital format allows attractions to customize their pricing and offerings—a free coffee or a gift shop BOGO, along with the already discounted ticket. VisitWilmingtonDE.com.

Blobfest 2021: House of Harris

July 9–11

The theme for Blobfest 2021 is the House of Harris in honor of Jack H. Harris, producer of the iconic film “The Blob.” The festival features other Harris-produced films including “The Blob,” “Equinox,” “The Last Man on Earth” and more. The event is still virtual but continues the tradition of the Run-Out and the Miss Blobfest Pageant. All-access VIP tickets, \$100, household weekend access, \$25. All content viewable from July 9 at 7 p.m. through 11:30 p.m. on July 11. Visit TheColonialTheatre.com.



best Things To Do

Many events are on hold for now, but there are still fun things to do in our area. Please be sure to check websites often for the latest updates.

FAMILY FUN

THROUGH JULY 4

Wawa Welcome America Festival. A huge Independence Day celebration in the city where it all began with free events, the 4th of July Jam and fireworks. *Benjamin Franklin Pkwy. between 20th St. and Eakins Oval. 215-683-2200; WelcomeAmerica.com.*

THROUGH JULY 11, Weekends Valley Forge National Park Living History at Muhlenberg's Brigade. Learn more about the park and history of the Valley Forge encampment at Muhlenberg's Brigade. Talk with a ranger dressed in 18th-century living history clothing. *1400 N. Outer Line Dr., Valley Forge. 10 to 4, weather permitting. Free. 610-783-1000; NPS.Gov/VaFo.*



THROUGH JULY 18

Crayola IDEAworx: The Creativity Exhibition at The Franklin Institute. A world premiere exhibition featuring a fusion of cutting-edge technology with state-of-the-art exhibits. Crayola IDEAworx inspires visitors of all ages to develop and expand their creative skills through a variety of activities. *222 N. 20th St., Philadelphia. \$31-\$35. Adv. tickets required. FI.edu.*

THROUGH AUGUST, Wednesdays DE Museum of Natural History Hands on Science. Hands on Science with DMNH at Winterthur Museum & Library, with fascinating specimens, incredible animals and astonishing science experiments. *4840 Kennett Pk., Wilmington. 10 am. \$25 per family. 302-658-9111; DelMNH.org.*

THROUGH SEPTEMBER 30

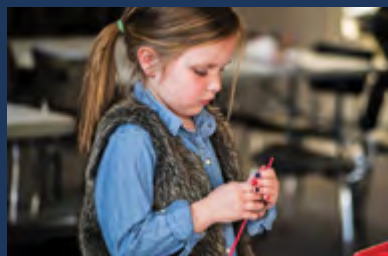
"Big Time: Life in an Endangered Age" at The Philadelphia Zoo. A new multi-sensory experience featuring 24 life-size, animatronic dinosaurs. Feel transported back to prehistoric times. Visit website to reserve a spot. *3400 W. Girard Ave., Philadelphia. \$6-\$24. PhiladelphiaZoo.org.*

THROUGH OCTOBER 11

Garden Railway at Morris Arboretum. Model trains zip around an outdoor quarter-mile track that's surrounded by miniature replicas of "Wonders of the World." See the Eiffel Tower, Hagia Sophia, the Egyptian Pyramids, the Wall of China and more. *100 E. Northwestern Ave., Philadelphia. Mon-Fri, 10 to 5; Sat-Sun, 9 to 5. \$10-\$20. 215-247-5777; MorrisArboretum.org.*

THROUGH DECEMBER

Science Saturdays at Hagley Museum & Library. Visitors of all ages are invited to discover solutions to science and engineering challenges. Science Saturdays are drop-in activities, so stop by during the event hours. *298 Buck Rd. Noon to 4. \$5-\$9. 302-658-2400; Hagley.org.*



and celebrate our nation's birthday by hearing the Declaration of Independence. *3900 N. Sandy Flash Dr., Newtown Square. 11 to 4. \$6-\$10. 610-566-1725; ColonialPlantation.org.*

JULY 10

Blueberry Festival at Linvilla Orchards. Come hungry for delicious blueberries and a decadent blueberry pie-eating contest. The winners of each age bracket will earn the champion title and receive a great prize. *137 W. Knowlton Rd., Media. Picking: 8 to 7; entertainment, 11 to 4. 610-876-7116; Linvilla.com.*

JULY 14, 28, AUGUST 4, 18

Sip & Stroll at Brandywine Zoo. Sip, stroll and learn while enjoying beer and touring the zoo after hours. Fun animal encounters and activities for all ages. Limited number of tickets. Beer sold separately. *Brandywine Park, 1001 North Park Dr. Wilmington. 5 to 7. BrandywineZoo.org.*



JULY 18

Colonial Pennsylvania Plantation: Sunday Storytime. Settle in for a reading from the children's book, "Charlie Needs a Cloak," then do a hands-on activity and go on a farm tour. *3900 N. Sandy Flash Dr., Newtown Square. Noon to 2. \$6-\$10. 610-566-1725; ColonialPlantation.org.*

AUGUST 8

Touch A Truck Day. Kids love to see and touch different models of cars and trucks. Chester County Gov. Services Complex, *601 Westtown Rd., West Chester. Noon to 4 pm. Pkg. \$2. 610-436-9010; West-Chester.com.*

ART, CRAFT & ANTIQUES ONGOING

Berwyn Indoor/Outdoor Vintage Flea Market. Shop antiques, collectibles, vintage fashions, jewelry, textiles, art and more. *260 Swedesford Rd., Berwyn. Sat-Sun, 8 am to 4 pm. Masks and social distance required. 215-625-3532; PhilaFleaMarkets.org.*

THROUGH OCTOBER 5

First Sundays

CCArts Outdoor Market at the Center for the Creative Arts. A blend of a farmers market and an artisan show, featuring handmade products from local vendors as well as musical performances and a food truck. Held rain or shine. *410 Upper Snuff Mill Row and Rt. 82, Yorklyn, DE. 302-239-2434; CCArts.org.*

JULY 16, AUGUST 20, SEPTEMBER 17

Growing Roots Partners Presents Craft & Mercantile. A curated evening of local artisans, this monthly night market features a rotating



line-up of more than 20 local crafters, live music, food trucks and more. Weatherstone Town Center, *240 Windgate Dr., Chester Springs. 5 to 8 pm. Free but please book in advance. GrowingRootsPartners.com.*

BOOKS

JULY 1-AUGUST 5

Wellington Square Bookshop. Classics Book Club in the Town Square: *July 7*, "East of Eden" by John Steinbeck. **NonFiction Book Club:** *July 1*, "Stolen: Five Free Boys Kidnapped into Slavery and their Astonishing Odyssey Home," by Richard Bell; *Aug. 5*, "The Moment of Lift: How Empowering Women Changes the World" by Melinda Gates. **Fiction Book Club:** *July 21-22*, "The Lions of Fifth Avenue" by Fiona Davis. *549 Wellington Sq., Exton. See website for times. 610-458-1144; WellingtonSquareBooks.com.*

JULY 13-29

Main Point Books. Book Launch: *July 13*, "Blush" by Jamie Brenner. **Fiction Book Club:** *July 20*, "Sharks in the Time of Saviors" by Kawai Strong Washburn. **NonFiction Book Club:** *July 29*, "The Barbizon" by Paulina Brenn. *116 N. Wayne Ave., Wayne. See website for times. 484-580-6978; MainPointBooks.com.*

CAR SHOWS.....

JULY 17

4th Annual Phila. Concours d'Elegance. Cool Cars for Kids, Inc. presents a showcase of classic and historic automobiles and race cars at this fundraiser. This year the show celebrates "America's Sports Car," the Corvette. The Simeone Automotive Foundation Museum, *6825 Norwitch Dr., Philadelphia. Benefits the Children's Hospital of Phila. towards its mission to support the Rare Diagnoses Center. 10 to 3. \$25, under 18, free. 215-365-7233; CoolCarsForKids.org.*



EQUESTRIAN.....

THROUGH SEPTEMBER 26

Fridays & Sundays

Brandywine Polo. Pack a picnic, your favorite



SETTING THE STANDARD SINCE 1978

Complete design services and fine craftsmanship
Custom barns, arenas, garages and living quarters




1-888-354-4740 | www.kingbarns.com

beverages and invite your friends. Lawn seating available, bring chairs or blanket. Full tournament schedule listed on website. 232 Polo Rd., Toughkenamon. Friday Twilight Polo—gates open at 5; match at 5:30. Sun, gates open at 1:30; match at 3, \$15–\$20. Cancelled for rain or extreme heat. 610-268-8692; BrandywinePolo.com.

JUNE 30–JULY 4, JULY 6–11
Brandywine Valley Summer Series. *June 30–July 4*, premier hunter/jumper/equitation horse show. *July 6–11*, The East Coast US Junior Hunter National Championship


finals and Hunter Championship. Benefits Moorcroft Conservation Foundation and the Chester County Food Bank. Held at Devon Horse Show Grounds, 23 Dorset Rd., Devon. Free. Visit website for more info. BrandywineHorseShows.com.

FESTIVALS
THROUGH JULY 4
2021 Virtual Kutztown Folk Festival. The festival will remain virtual this year, as one of the oldest continuously operated folklife festivals in the country. KutztownFestival.com.



SV DENTAL

We treat every patient like family



Theresa M. Smith DDS
Carlos E. Vila DDS

now accepting new patients

195 W. Lancaster Ave, Suite 1 Paoli, PA 19301

610.296.7797

WWW.SVDENTAL.COM

Cecil County, MD Events

Cecil County, MD has lots to offer. Take a day trip or plan on staying a while. Check their website for more events. CCGov.org.

July 4. Independence Day Celebration & Fireworks. Music, vendors and fireworks. *Pell Gardens, Chesapeake City. 5 to 10:30 pm. ChesapeakeCity.com.*

Through October 1, Thursdays. Music on Main. Bring your lawn chairs and enjoy the music. *Corner of North & Main St., Elkton. 5:30 to 7:30 pm. ElktonAlliance.org.*

July 23–31. The Cecil County Fair. Agricultural fair, vendors, rides, games, animals and more. *Fair Hill Fairgrounds, 4640 Telegraph Rd., Elkton. CecilCountyFair.org.*



August 28. Chesapeake City Car Show. *98 Bohemia Ave., Chesapeake City. Facebook.com/ChesapeakeCityCarShow.*

September 17–18. Elkton Fall Fest. Entertainment, contests, crafters, vendors, children's activities. *Downtown Elkton. North & Main Sts., Elkton. 8 to 8. ElktonAlliance.org.*

JULY 13–17
Malvern Fire Company Fair. Every night is Family Night at this fair, with rides and games, face paintings, magicians and a pep band. Monument Grounds, Monument Ave., Malvern. Daily, 6 to 10. Fireworks, Fri, 9:30 pm. 610-647-0693; MalvernFireCo.com.

JULY 26–31
Kimberton Fair. Everything from 4-H livestock competitions to the Fair Queen competition, great food and entertainment, rides and fireworks. Kimberton Fairgrounds, 762 Pike Springs Rd., Phoenixville. Visit website for more information. KimbertonFair.org.

AUGUST 2–7
72nd Annual Goshen Country Fair. An old-fashioned fair with agricultural exhibits,

rides and entertainment. Benefits the Volunteer Goshen Fire Co. Gates open 6 pm, Mon–Fri; Sat at 5 with reduced tickets for rides until 7pm. Fair Grounds, 1320 Park Ave., West Chester. 610-430-1554; GoshenCountryFair.org.

FILM
JULY 3
The Grand Presents Drive-In Movies at Bellevue State Park. Disney's "Mary Poppins Returns." \$15–\$60, includes popcorn and a drink for all paid occupants in car. 720 Carr Rd., Wilmington. TheGrandWilmington.org.

JULY 17
Cinema in the Cemetery. Pack a picnic, gather some friends and enjoy an evening under the stars as the sun sets over the historic tombs to watch "Little Shop of Horrors." 225 Belmont Ave., Bala Cynwyd. 8:30 pm. Free. WestLaurelHill.com.

FOOD & BREWS
THROUGH SEPTEMBER 16
Thursdays
Happy Hour at Delaware Art Museum. Summer series features live music, local brews, wine, cocktails, food vendors. Visit website for a complete schedule. 2301 Kentmere Pkwy.,

Wilmington. N. Terrace Copeland, Sculpture Garden. Free. 302-571-9590; DelArt.org.

THROUGH SEPTEMBER
Wednesdays & Second Saturdays
Summer Dining in Media. State and Olive Streets in downtown Media will be closed to allow restaurants to offer a socially distanced outdoor dining experience. First seatings begin at 5:30 p.m. and although not required, reservations are encouraged. Visit the website for details. VisitMedia.com.



THROUGH OCTOBER
Food Truck Tuesdays in King of Prussia. Eat to beat the heat at food trucks in King of Prussia this summer. This roving food truck series, features live music, yard games and multiple food

trucks offering great lunch items. Locations TBA. 11:30 to 1:30. See website for details. VisitKOP.com.

FUNDRAISERS
ONGOING
Tredyffrin Historic Preservation Trust Presents "As History Goes On." A non-event fundraiser to meet construction costs of the Jones Log Barn and programming needs of the History Center. To donate, 610-644-6759 or visit TredyffrinHistory.org.

GARDENS
THROUGH OCTOBER
Pennsylvania Horticultural Society Opens Meadowbrook Farm. A 25-acre garden offering beautiful plants and displays, this year highlighting a palette with contemporary plantings influenced by the history of Meadowbrook. 1633 Washington Ln., Jenkintown. Wed–Sat, 10 to 4. Free. 215-887-5900; PHSONline.org/Locations/PHS-Meadowbrook-Farm.

MUSEUMS
THROUGH SEPTEMBER 12
Delaware Art Museum. "Collecting and Connecting: Recent Acquisitions, 2010–2020." 2301 Kentmere Pkwy., Wilmington. Wed, 10 to 4;



Design FOR YOUR BEST LIFE

HENRIETTA HEISLER INTERIORS INC

RESIDENTIAL | COMMERCIAL

217 WEST WALNUT STREET
LANCASTER, PA 17603

717.295.0324

HENRIETTAHEISLERINTERIORS.COM

Thurs, 10 to 8; Fri–Sun, 10 to 4. \$6–\$12, Sun, free. 302-571-9590; DelArt.org.

THROUGH SEPTEMBER 19

Brandywine River Museum of Art. “Ralston Crawford: Air+Space+War,” an exploration into U.S. aviation and military history through the art and personal experiences of American Modernist Ralston Crawford. 1 Hoffman’s Mill Rd., Chadds Ford. \$6–\$18. 610-388-2700; Brandywine.org.

MUSIC & ENTERTAINMENT.....
See The Arts Guide and Outdoor Concerts in this issue.

JULY 16–31

Kennett Flash Rooftop Concerts. *July 16*, Steve Forbert & The New Renditions, 7 pm, \$35; *July 17*, The Sin City Band, 7 pm, \$20; *July 24*, The Monkeephiles—A Tribute to The Monkees, 7 pm, \$20; *July 29*, The Hypothetical House Band—Jon Herington and Dennis Espantman, 7 pm, \$30; *July 31*, Rory Block, 7 pm, \$30. 102 Sycamore Alley, Kennett Square. 484-732-8295; KennettFlash.org.

JULY 6–AUGUST 15

“Together We Celebrate” at Fulton Theatre. Celebrate the return of the arts, live on the Fulton stage. This concert of Broadway favorites brings together the community that has allowed

us to make it to the other side. 12 N. Prince St., Lancaster. \$25–\$45. 717-397-7425; The-Fulton.org.

AUGUST 7–8

The 23rd Annual Riverfront Blues Festival. Tentative dates set—check website for updates closer to event. Musicians take over two stages inside Tubman-Garrett Riverfront Park, while vendors sell blues-appropriate food. Rosa Parks Dr. Check website for lineup and times. \$15–\$25. 302-576-2139; RiverfrontBluesFest.com.



OUTDOOR ACTIVITIES

JULY 1–30

The Stars & Strides Challenge to End Homelessness. This is a virtual challenge to run,

walk, bike, hike, swim or even crawl, at your own speed, wherever you can, the length of a Marathon, 26.2 miles, during the month of July. Benefits Home of the Sparrow. Follow along on social media as the event nears. Registration page at HomeOfTheSparrow.org.

THEATER

THROUGH OCTOBER 9

Ryan & Friends: Comedy Calamity Show at Bird-in-Hand Stage. A comedy routine and song parodies in styles ranging from country to Broadway. 2760 Old Philadelphia Pk., Bird-in-Hand. \$14–\$49. Check website for times. 800-790-4069; Bird-in-Hand.com/Stage.

JULY 13–AUGUST 7

Delaware Theatre Co. 20/21 Season: Take 2! July 13–17, The Whitney Project—A Celebration of Black Joy; *July 20–24*, My Immigration Story; *July 27–31*, Me, My Mic, and I; *Aug. 6–7*, 5 Women. Phone or visit website for tickets and times. 302-594-1100; DelawareTheatre.org.

JULY 16–AUGUST 1

Delaware Shakespeare Summer Festival. Picnic in the park while enjoying programs that allow for social distancing. Three events over three weeks—Midsummer Mix Tape,

Rosalind X3 and a Shakespeare Poetry Slam. Rockwood Park, 4651 Washington St. Extension, Wilmington. \$10–\$30. 302-468-4890; DelShakes.org.

TOWNS, TALKS & TOURS

THROUGH JULY 31

Historic Sugartown Weekend Guided Tours. Visit the General Store and School Room exhibits, the Carriage Museum, c. 1805 Garrett House, Book Bindery and c. 1835 Cheever Bank Barn. Parking at 273 Boot Rd., Malvern. 11 to 12:30. \$7–\$9. 610-640-2667; HistoricSugartown.org.

THROUGH SEPTEMBER

Gay Street Open-Air Market in West Chester. West Chester will have plenty of outdoor dining



and shopping options this summer. Be sure to check out all the fun throughout the vibrant downtown. DowntownWestChester.com.

THROUGH SEPTEMBER

Historic Kennett Square’s “Kennett Blooms.” Enjoy sidewalk dining on State Street, rooftop concerts brought to you by The Kennett Flash and ice cream and an outdoor beer garden vibe on Birch Street. Visit HistoricKennettSquare.com.

THROUGH NOVEMBER 29

Open-Air Set-Ups in Phoenixville. Businesses will set up in the closed sidewalk and roadway-between the 100–200 blocks of Bridge Street. Fri, 4 to 11; Sat–Sun, 7 am to 11 pm. The Main and Bridge Street parking lot will also be closed for the duration of the road closure. PhoenixvilleFirst.org.

JULY 1–15

Town Tours & Village Walks. *July 1, 3, 4*, “Abolitionists and the Eusebius & Sarah Barnard



House,” Thurs, virtual, Sat–Sun, walking tour; *July 15*, “Parker Sisters Kidnapping and Rescue” with Roberta McManus. Tours through Aug. 19, 610-344-6923; ChesCo.org/Planning/TownTours.

JULY 2, 10, 15

First Fridays, Second Saturdays And Third Thursdays
First Fridays: *July 2, Lancaster City*, 717-509-ARTS; VisitLancasterCity.com. *Oxford*, 610-998-9494; DowntownOxfordPA.org. *West Chester*, 610-738-3350; DowntownWestChester.com. *Wilmington Art Loop*, 302-576-2135; CityFestWilm.com.
Second Saturday Virtual Arts Stroll: *July 10*, Media, 484-445-4161; MediaArtsCouncil.org.
Third Thursday Malvern Stroll: *July 15*, MalvernBusiness.com. ♦

Stay in the know with everything going on in County Lines country. Sign up for our Events Newsletter (sent twice monthly) at Newsletter@ValleyDel.com.

Send a description of your activity to Info@ValleyDel.com by the first of the month preceding publication.

For more events visit:

CountyLinesMagazine.com



- 3 Sundays per month.
- Two courses offered per semester and a “mystery class”.
- Collaborative field trips with Interfaith Philadelphia.
- Informal social time to connect with peers.
- Social Action projects, Challah Baking, Spiritual Hikes and SO MUCH MORE!



The Chester County Hebrew High School opens its doors to ALL 8th – 12th graders looking to experience a warm, supportive Jewish community, take action with mitzvah projects & connect to Jewish tradition through innovative experiential learning.



David Ari & Michael Eric Zukin Religious School

The David Ari & Michael Eric Zukin Religious School at Keshet Israel is the place to be for innovative and experiential Jewish Education! Located in beautiful Chester County, PA the Religious School offers your children a home away from home in which Jewish identity is embraced and enhanced with music, prayer, social & emotional learning and so much more.

- K-7th Grades.
- Sundays only for K-2 and 7th, Sundays & Wednesdays for 3rd-6th.
- AMAZING holiday programs & special guest appearances to enhance learning.
- Prayer time twice a week, ALL School Shabbatonim & student-centered class Shabbat services.
- Intergenerational Learning.
- Dedicated Teachers & Involved Clergy.
- Special Needs Inclusion Specialist.

We can’t wait to get to know your children and find out what sparks their curiosity!

Keshet Israel Congregation
1000 Pottstown Pike, West Chester, PA
610-696-7210

REGISTRATION IS OPEN NOW.
For more information, email Rachelm@keshet-israel.org or visit:
www.keshet-israel.org/learn/hebrew-high-school
www.keshet-israel.org/learn/religious-school



PINEMAR
BUILDING BEAUTIFUL HOMES

PINEMAR.NET

VALANCES • DRAPERIES • SHEERS • BLINDS • SHADES • BED ENSEMBLES • PILLOWS

Specializing in Window Treatments & Home Decor!



HunterDouglas

1064 East Main St. (Rt. 23) | New Holland, PA

Heritage
Design Interiors Inc.

Life Well *Styled*

We can coordinate everything for a complete home look including room, walls and windows or just give you a few ideas.

Stop in or call for an appointment:

717-354-2233

Monday - Friday 10 a.m. - 5 p.m.
Saturday 10 a.m. - 2 p.m.

f www.HeritageDesignInteriors.com i



**PETER
ZIMMERMAN
ARCHITECTS**

Architecture | Comprehensive Property Design | Historic Preservation
PZArchitects.com 610.647.6970



Meet Me At the Farm Market!

From fresh produce, meats, cheeses, baked goods and more, you'll discover something new every week at your local, or not, farm market.

Downingtown Farmers Market

Kerr Park, 1 Park La. Sat., 9 to noon.
GrowingRootsPartners.com.

Devon Yard

25 S. Waterloo Rd. Wed., 11 to 2.
GrowingRootsPartners.com.

Eagleview Farmers Market

Eagleview Town Ctr. Exton. Thurs., 3 to 6.
GrowingRootsPartners.com.

Kennett Square Farmers Market

The Creamery, 401 Birch St. Fri., 3 to 6.
HistoricKennettSquare.com.

Lancaster County Farmers Market

Indoor farmers market.
389 W. Lancaster Ave., Wayne.
Wed., Fri., Sat., 6 a.m. to 4.
LancasterCountyFarmersMarket.com.

Malvern Farmers Market

Burke Park, Roberts Rd. & S. Warren Ave.
Sat., 9 to noon. GrowingRootsPartners.com.

Pete's Produce Farm

Covered farm stand.
1225 E. Street Rd., West Chester.
Daily 9 to 5. PetesProduceFarm.com.

Phoenixville Farmers Market

200 Mill St., under Gay St. Bridge. Sat.,
9 to 1. PhoenixvilleFarmersMarket.org.

Pottstown Farmers Market

100 E. High St. Every other Sat. from May
15, 9 to 1. PottstownFarm.org.

Newtown Square Farmers Market

St. Alban's Episcopal Church
3625 Chapel Rd. Fri., 3 to 6.
[Facebook.com/NewtownSquareFarmersMarket](https://www.facebook.com/NewtownSquareFarmersMarket).

SIW Farmers Market

4317 S. Creek Rd., Chadds Ford.
Daily 9 to 6. SIW-Vegetables.blogspot.com.

Swarthmore Farmers Market

432 Dartmouth Ave.
Sat., 9 to noon. FarmToCity.org.

Thornbury Farm Market

1256 Thornbury Rd., West Chester
Fri., 9 to 5, Sat.-Sun., 11 to 5.
ThornburyFarmCSA.com.

Thornton Farmers Market

330 Glen Mills Rd. Sat., 10 to 1.
[Facebook.com/ThorntonFarmersMarket](https://www.facebook.com/ThorntonFarmersMarket).

West Chester Growers Market

Chestnut & Church Sts. Sat., 9 to 1.
WestChesterGrowersMarket.com.

Westtown Amish Market

Indoor farmers market.
1177 Wilmington Pk.,
West Chester.
Thurs., 9 to 6; Fri., 9 to 7;
Sat., 8 to 4.
WestChesterAmishMarket.com.

1. Kennett Square Farmers Market
2. Lancaster County Farmers Market
3. Growing Roots Partners Farmers Market
4. Thornbury Farm Market
5. Pete's Produce Farm

THERE ARE MANY FARM AND RETAIL OUTLETS, CSAS AND SPECIALTY PRODUCERS IN OUR AREA.

A Guide to Local Farm Products in Chester County is a great resource.

Visit Chesco.org/AGDEV/FarmGuide.



Growing Rainbows: Local Flower Farms

THERE'S MORE THAN
GOLDEN BLOOMS AT
THESE LOCAL TREASURES.

Carol Metzker

A FRIEND WHO CUTS SUMMER FLOWERS woke before the birds. “The sunlight was pale. Leaves were dewy. Goldfinches flew among sunflowers. Often when cutting zinnias, I’d find a bumblebee sleeping in a curled petal. It would drowse a moment, then buzz away.”

Mara Tyler, owner of The Farm at Oxford, calls sunset “the magic hour” for its blue and cotton-candy pink skies that light up her sherbet-hued dahlias. Bluebirds sing goodnight, while bees are quiet.

Local flower farms are complex ecosystems, busy businesses—farmers work dawn to dusk—and sites of unparalleled beauty. Each has unique personality and offerings: cut bunches, plants, wedding blooms, venues for events, fields that welcome artists. All revolve around Nature’s beautiful blossoms.

MAGIC GARDENS

The Farm at Oxford produces stunning bouquets and buckets of exotic blooms—frilly daffodils, peonies flaunting explosions of petals, extraordinary rainbows of ranunculus, parrot tulips, glamorous as macaws, and so much more. Customers clamor for bouquets and CSA



The Farm at Oxford



Styer's Peonies



shares, pre-ordered for pick-up at five Chester County locations.

Part of a local flower movement, the farm uses sustainable practices for growing bulbs, corms, plugs and seeds.

To boost pollination, last year Tyler collected caterpillars in danger of being devoured by birds and gave them safe haven for their metamorphosis. The monarchs emerged during summer and were released into the gardens. But some swallowtails were slow, she said. Using netting in her guest bathroom’s tub, she housed the chrysalides through winter—then released the butterflies in spring.

FARM TO VASE

Peek and poke your nose into simple brown paper wrapping. Depending on the season, organically grown blue bachelor’s buttons, orange lilies, yellow yarrow, purple dame’s rocket, and charming white deutzia delight the senses. Thanks to **Farm and Garden Flowers of Coatesville**, artisanal markets including Carlino’s and Kimberton Whole Foods offer farm-to-vase blooms alongside farm-to-table food.

Owner-farmer Madeline Frankel describes her work as “exhaustion and passion.” She tends rows, drives truckloads of stems from a cow-pasture-turned-flower-field to a cooler room and manages administrative tasks.

Through succession planting—sowing seeds at regular intervals—fields produce

gems of different textures and hues nearly continuously spring through fall.

The rewards of her passion are visible. Down a lane along a brook, the farm welcomes visitors with landscapes of rhododendrons, tall trees, lush ferns and pale green hellebores. A former chicken yard is a bed of bearded iris, and the coop now stores spades.

By appointment, small groups attend flower classes under the pavilion, as photographers and plein air artists revel in glorious views.

For more spectacular sights, mark your calendar for **Styer’s Festival of the Peony** next May. Walk or drive the Chadds Ford’s farm’s vast acreage of nodding peonies: coral, magenta, red, white and rare pale yellow named Garden Treasure. Arrive early.

Red-wing blackbirds call. Blooms on the rolling green hills bedazzle as morning mists rise. Buy buds that become fluffy petal clouds when hydrated.

FIELDS OF FLOWERS

Pete’s Produce Farm has dedicated some of its acreage for flowers for more than 20 years. Celosia, tall verbena and purple Persian cress started in garden rows, brighten the market’s counters and land on customers’ tables.

Shoppers aren’t the only ones who love them. Flower rows are also habitats for flying critters. Goldfinches, bluebirds, purple martins and hummingbirds—

Hickory Grove



Hickory Grove



Visit the Farms

Find out more about what the flower farms have to offer by visiting their websites and social media. Please remember these are working farms and businesses, so check if you need to make an appointment. Not all farms have pick-your-own days.

- ✿ The Farm at Oxford; TheFarmAtOxford.com
- ✿ Farm and Garden Flowers of Coatesville; FarmAndGardenFlowers.com
- ✿ Styer's Peonies; StyersPeonies.com
- ✿ Pete's Produce Farm; PetesProduceFarm.com
- ✿ Hickory Grove Gardens; HickoryGroveGardens.com
- ✿ Mt. Airy Lavender Farm; MtAiryLavender.com
- ✿ Peace Valley Lavender; PeaceValleyLavender.com

And for another lavender adventure, head to **Warwick Furnace Farm** in Glenmoore for handmade lavender essential oils, botanical beauty products and pick-your-own lavender events. We discovered them at the recent Philadelphia Flower Show, when they spritzed us with their lovely scents. WarwickFurnaceFarm.com.

attracted by seeds, nectar and feasting bugs—flock to the farm. Bees work the brilliant yellow wild mustard that grows like a weed.

This summer enjoy Pete's sunflower field where birds, bees, butterflies and families wanting portraits keep cameras clicking for weeks.

Beyond the stresses of Main Street and Corporate Boulevard lies **Hickory Grove Gardens**. Farmer Julia Bull uses natural fertilizers and releases beneficial insects including lacewing larvae and ladybugs in hoop houses. In hoops, she grows five shades of stock, ten of ranunculus, yellow and orange poppies.

Outdoor violet Canterbury Bells and other fresh flowers go to Seven Stars Farm store, Phoenixville Farmers' Market and West Chester's TWIG Gardens florist who arranges solely with local blossoms. Julia's

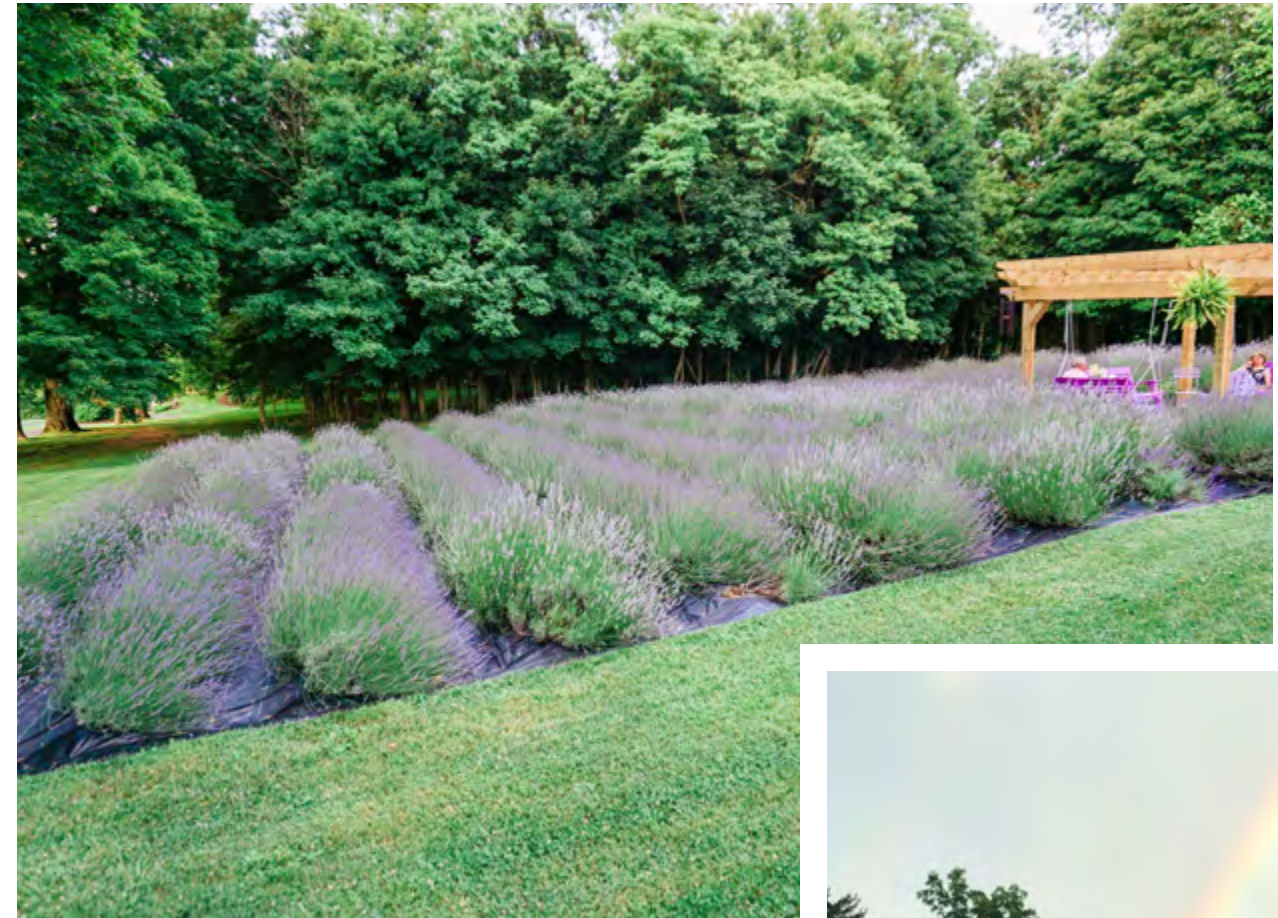
dried florals appear in everlasting bouquets and wreaths.

Life isn't always rosy for flower farmers—it's "grunt work" and sometimes a battle with storms and droughts. Julia's dog, Ranger, patrols her rows for groundhogs. "Puppy" sometimes digs up what she has just planted. Little Martha, the goat, ate her first year's entire lily crop—600 heads (and stayed around to bleat about it). Still, the beauty is astounding.

CUT YOUR OWN

In the heart of Chester County's Amish countryside, take Oxford's backroads across railroad tracks and past beehives to discover **Toot Valley Farm**. Pick up spring bouquets of purple allium, yellow iris and blue sweet peas or manure for mulching—thanks to the horses you'll likely see in a nearby paddock or pulling a buggy.

Toot Valley Farm



Mt. Airy Lavender Farm



In July pack scissors, water jar and floppy hat. Wander the cut-your-own bloom garden. Breathe. Snip a painter's palette of zinnias, ruffly lisianthus, black-eyed Susans and more. While at the friendly market, stock up on honey from the hives, plus fruits and vegetables so fresh they must have been picked ten seconds ago.

A TASTE FOR BOUQUETS: RED, WHITE AND LAVENDER

To feed mind and body, head to the charming family-owned **Mt. Airy Lavender Farm**, where horses graze and seasonal lavender waves in summer breezes before it's harvested and distilled for bath and body products.

Farm events are creative and fun—Sunday morning yoga in the field, micro-weddings, "glamping" weekends, celebrations in the enchanting springhouse and flower

and wreath workshops by its floral designer trained at Longwood Gardens. Join occasional wine strolls through the gardens with tastings provided by another family business: Santa Barbara's Luna Hart Wines.

Back home, please your palate with lavender simple syrup, frosting mix and culinary buds purchased at the farm or online.

Want more? Visit **Peace Valley Lavender** in neighboring Bucks County for breathtaking fragrance and seasonal views of pale purple stems in front of the Southern yellow pine barn. Buy essential oil, shampoo, honey lavender shortbread and lavender soda. BYO basket: on special summer days when the crop is robust, cut lavender to fill your Provençal basket.

Experience the abundance brought to you with kudos to local farmers. Fleeting blooms await. ♦



Fall Guide to the Arts

Curtains! Lights! On with the show! Things are opening.

Edited by Marci Tomassone

THEATERS & VENUES WITH MUSIC, DANCE & THEATER PERFORMANCES

SUBURBAN PA COUNTIES

American Music Theatre

Since 1997, AMT has welcomed Opry legends along with Grammy, CMA, Tony and Oscar winners. They've hosted acclaimed original shows, national Broadway tours, and Christmas extravaganzas. 2425 Lincoln Hwy. E., Lancaster
AmericanMusicTheatre.com
* *Amy Grant, Gladys Night, PA Gospel Music Festival, Martina McBride*

Bird-in-Hand Stage

Offering exceptional entertainment, including Broadway-style musical theater and magic shows—one of Lancaster County's must-see stops for live performances. 2760 Old Philadelphia Pk., Bird-in-Hand
Bird-in-Hand.com
* *Ryan & Friends, The Christmas Tree Ship*

The Colonial Theatre/Point Entertainment

Independent and classic films, concerts and community events. Major performances booked by Point Entertainment. 227 Bridge St., Phoenixville
TheColonialTheatre.com
PointEntertainment.com
* *Al Stewart with the Empty Pockets, The Rocky Horror Picture Show, The High Kings*

Kennett Flash

An all-ages, stage-centered, café-style venue showcasing professional national, regional and local music, comedy, children's programs and more. 102 Sycamore Alley, Kennett Square
KennettFlash.org
* *The Sweet Remains, Proud Monkey—A Tribute to Dave Matthews Band*

Keswick Theatre of Performing Arts

A 1,300-seat venue hosting well-known acts with state-of-the-art sound and light. 291 N. Keswick Ave., Glenside
KeswickTheatre.com
* *Ted Nugent, Whose Live Anyway?, Tommy Emmanuel*

Longwood Gardens Performing Arts

The arts at Longwood are continuing and are as inspiring and beautiful as the Gardens. 1001 Longwood Rd., Kennett Square
LongwoodGardens.org
* *Live music in the Beer Garden*

Neumann University, Meagher Theatre

Modern 300-seat theater hosting lectures, theater, cinema and concerts. 1 Neumann Dr., Aston.
Neumann.edu

Sight & Sound Theatres

Faith-based live theater that's been described as "Christian Broadway." 300 Hartman Bridge Rd., Strasburg
Sight-Sound.com
* *Queen Esther*

Uptown! Knauer Performing Arts Center

Promoting cultural, economic and civic life through music, dance and film. 226 N. High St., West Chester
UptownWestChester.org
* *Better Than Bacon: Talking Sticks And Brazilian Vibes, Echoes: The American Pink Floyd, Kashmir: Tribute To Led Zeppelin*

West Chester University—WCU Live!

Live performances held on campus of music, theater and dance by national traveling groups. Emilie K. Asplundh Concert Hall and Madeleine Wing Adler Theatre, West Chester
WCUPa.edu/oca/WCULive

DELAWARE

The Grand Wilmington

Presenting more than 75 shows most seasons—from symphony orchestras and ballets to the latest rock and comedy stars, jazz, folk, family artists and more. 818 N. Market St., Wilmington
TheGrandWilmington.org
* *Theo Von Live, Postmodern Jukebox, Rock N Doo Wop Dance Party*

Theatre N at Nemours

Independent feature films and concerts. 11th & Tatnall Sts. Nemours Bldg., Wilmington
TheatreN.org

PHILADELPHIA

The Academy of Music

Opened in 1857, it's the oldest grand opera house in the country still used for its original purpose. This 2,900-seat venue is both a celebrated historic landmark and a contemporary concert hall. Broad & Locust Sts. AcademyOfMusic.org
* *Hamilton, An Evening with David Sedaris, Pretty Woman: The Musical*

Annenberg Center for the Performing Arts

Dedicated to the advancement of a diverse and thriving cultural community. Univ. of Pennsylvania campus
3680 Walnut St. PennPresents.org

The Dell Music Center

This open-air amphitheater has 5,284 reserved seats and lawn seating for 600. Ridge Ave. & W. Huntingdon St.
MyDellEast.com
* *Check website for performances*

1. Delaware Children's Theatre
2. Fulton Theatre
3. Music School of Delaware
4. The Met Philadelphia
5. Brandywine Singers
6. Music School of Delaware
7. People's Light Outdoor Concerts

Kimmel Center for the Performing Arts

Premier performing arts groups reside at the Kimmel Center and the Academy of Music—The Phila. Orchestra, Philly Pops, The Pennsylvania Ballet, Philadanco and more. 300 S. Broad St. KimmelCenter.org
* *Check website for performances at The Academy of Music and Forrest Theatre*

The Mann Center for Performing Arts

Located in Philadelphia's beautiful Fairmount Park, the Mann continues its tradition as the greater Philadelphia region's premiere outdoor cultural arts center. 5201 Parkside Ave. MannCenter.org
* *The Disco Biscuits Present City Bisco, Pictures from an Exhibition: An Evening of Classics, Tchaikovsky Spectacular*

The Met Philadelphia

This is the former Philadelphia Metropolitan Opera House, originally built in 1908 by opera impresario Oscar Hammerstein. 858 N. Broad St. TheMetPhilly.com
* *Lindsey Stirling, Defones, Sting, Celtic Woman, Jim Gaffigan*

NEW JERSEY

BB&T Pavilion

Outdoor amphitheater/indoor theater complex located on the Camden Waterfront 1 Harbour Blvd., Camden. LiveNation.com

EVENTS & SERIES

Chester Cty. 91st Old Fiddlers Picnic, TBD

Hundreds gather for music and memories. Hibernia County Park, Wagontown
ChesCo.org/CCParks

Clifford Brown Jazz Festival, June, 2022

Wilmington's tribute to a great man and his legacy is the largest, multi-day, free, outdoor jazz festival on the East Coast. Rodney Square, 1000 N. Market St. Wilmington. CliffordBrownJazzFest.org

Media Jazz By Night, November

The 15th anniversary of this annual festival that serves up a lively night full of authentic jazz. State St., Media. StateStreetBlues.com

Media State Street Blues Stroll, June, 2022

A summer evening of performances complete with gospel, R&B, blues & country. StateStreetBlues.com

Paoli Blues Fest, Sept. 25

Perfect for blues lovers and anyone who likes to eat, dance, shop and enjoy great music. Paoli Presbyterian Church, 225 S. Valley Rd. Paoli. PaoliBluesFest.com

PERFORMANCE GROUPS DANCE

SUBURBAN PA COUNTIES

Brandywine Ballet

Providing professional training and performance opportunities for dancers and entertaining audiences as the region's premier ballet organization. Emilie K. Asplundh Concert Hall 700 S. High St., West Chester
BrandywineBallet.org

Chester County Ballet Company

A professional performance group at Chester County's oldest training school for dance. 321 S. High St., West Chester
HarrisonDanceStudios.com

DELAWARE

First State Ballet Theater

Delaware's professional ballet company presents full-length ballets and mixed-repertory programs. 818 N. Market St., Floor 3R, Wilmington
FirstStateBallet.com

PHILADELPHIA

Pennsylvania Ballet Association

A premier ballet company, receiving widespread critical acclaim for extraordinary performances of a diverse classical and contemporary repertoire. 1819 JFK Blvd., Ste. 210. PABallet.org
* *Check website for performances*

Philadelphia Dance Company

Known for its cultural diversity, PHILADANCO works to preserve predominantly African-American traditions through its dances. Philadanco, 9 N. Preston St. PhilaDanCo.org

MUSIC

SUBURBAN PA COUNTIES

Brandywine Singers

A choral ensemble with a wide repertoire of music, partnering with other groups to present concerts. TheBrandywineSingers.org

Chester County Choral Society

Led by a professional director and accompanist and performing diverse choral music. P.O. Box 3466, West Chester
ChesterCountyChoralSociety.org

Chesco Pops Orchestra

Comprised of 65 talented and dedicated musicians from around the County, performing pops, jazz and light-classic repertoire. P.O. Box 2468, West Chester. ChesCoPops.org
* *Concert performance of the musical, Chess*

Delaware County Symphony

This community orchestra performs at Neumann University. Meagher Theatre Life Center, Concord Rd., Aston. DCSMusic.org

Gilbert & Sullivan Society of Chester County

Founded in 1987, the Society presents fully staged productions of the G&S operettas, complete with costumes, sets and full orchestra. P.O. Box 195, West Chester. GSSChesco.org

Immaculata Symphony

From as far back as 1920, this orchestra has grown from a chamber-size group to a large ensemble. 1145 King Rd., Immaculata
ImmaculataSymphony.org

Kennett Symphony

Experience the unique thrill in witnessing the energy and passion of Music Director, Michael Hall, and the professional musicians recreating musical masterpieces. 106 W. State St., Kennett Square
KennettSymphony.org

Lancaster Symphony Orchestra

Entertaining and educating the south central PA community through live musical performances. 226 N. Arch St., Lancaster
LancasterSymphony.org



Fall Guide to the Arts

Opera Lancaster

Nonprofit group producing operas since 1952.
411 W. King St., Lancaster
OperaLancaster.com

Rose Tree Pops Orchestra

A community orchestra with performances ranging from classical to pops to Big Band.
P. O. Box 932, Media. RoseTreePops.org

Rose Valley Chorus and Orchestra

Chorus and 35-piece orchestra.
Strath Haven Middle School, S. Providence Rd.
Wallingford. RVCO.org

Theatre Organ Society of the Delaware Valley (TOSDV)

TOSDV owns, maintains and presents theatre organ concerts and silent movies on a 3/24 Wurlitzer theatre pipe organ, in the Colonial Theatre, Phoenixville.
P.O. Box 141, Cheltenham. TOSDV.org

Vox Ama Deus

Musicians are known for historical accuracy, frequently performing on authentic Baroque instruments.
P.O. Box 203, Gladwyne. VoxAmadeus.org

DELAWARE

Brandywine Baroque

Concerts of chamber music on period instruments.
Barn at Flintwoods, 205 Center Meeting Rd.,
Wilmington. BrandywineBaroque.org

Delaware Symphony Orchestra

Performing classical and chamber concerts.
P.O. Box 1870, Wilmington
DelawareSymphony.org

Mélomanie

Pairings of early and contemporary works.
200 S. Madison St., Wilmington
Melomanie.org

OperaDelaware

The only professional opera company in the state and the 11th oldest in the country.
4 S. Poplar St., Wilmington. OperaDE.org

Serafin Quartet

The Quartet performs frequently around the US and the world, receiving international prizes and awards.
1014 Sweet Cherry Ct., Wilmington
SerafinQuartet.org

PHILADELPHIA

The Philadelphia Orchestra

Yannick Nézet-Séguin joined the small yet illustrious group as the eighth music director of The Philadelphia Orchestra in over 116 years. One of the preeminent orchestras in the world.
1 S. Broad St. PhilOrch.org
* *Bizet and Ravel, Mendelssohn "Italian" Symphony, Yannick Returns*

PERFORMANCE GROUPS / SCHOOLS

Angela Bates Dance Academy

Classes in all styles of dance, for all levels and all ages. Special summer programs.
5129 West Chester Pk., Newtown Square
AngelaBatesDanceAcademy.com

Ballet 180 / Studio 180

Performing at McShain Performing Arts Center, Rosemont College.
1708 Lancaster Ave., Floor 2, Paoli
Ballet180.org

Darlington Arts Center

Celebrating over 40 years of creative experiences in music, art, dance and drama for children and adults.
977 Shavertown Rd., Garnet Valley
DarlingtonArts.org

Longwood Performing Arts

Classes from experienced faculty in a variety of dance styles.
633 West Cypress St., Kennett Square
LongwoodPerformingArts.com

West Chester Studio for the Performing Arts

Teachers are experienced professional actors and provide a high-caliber performing arts education to students of all ages and abilities.

Held at: Chester County Historical Society
225 N. High St., West Chester
WestChesterStudio.com

West Chester University Department of Theatre and Dance

Presenting classic, contemporary, and new plays, musicals and dance produced by faculty, students and Philadelphia guest artists.
E.O. Bull Center for the Arts, High & Rosedale Sts. West Chester. WCUPa.edu/TheatreDance

Wolf Performing Arts Center

Professionally staged productions, coaching and classes with experienced teaching artists.
1240 Montrose Ave., Bryn Mawr
WolfPerformingArtsCenter.org

DELAWARE

The Music School of Delaware

Offering standard-setting instructional programs by expert educators for people of all ages and levels.
4101 Washington St., Wilmington
MusicSchoolOfDelaware.org

THEATER – PROFESSIONAL

SUBURBAN PA COUNTIES

Bucks County Playhouse

Located on the site of a former grist mill on the banks of the Delaware River.
70 S. Main St., New Hope
BucksCountyPlayhouse.com
* *Candace Bushnell—Is There Still Sex in the City?*

Fulton Theatre Productions

A National Historic Landmark, considered the nation's oldest continuously operating theater.
12 N. Prince St., Lancaster. TheFulton.org
* *Fun Home, Rodgers and Hammerstein's Cinderella, The 25th Annual Putnam County Spelling Bee*

Hedgerow Theatre

Featuring classical productions, fun-filled farces and traditional tales for the whole family.
64 Rose Valley Rd., Media
HedgerowTheatre.org
* *Shakespeare By the Brook: The Two Gentlemen of Verona*

Media Theatre

Producing five musicals annually, plus children's productions, the Media Theatre has been honored with numerous awards for its performances.
104 E. State St., Media. MediaTheatre.org
* *Check website for updates*

People's Light

One of Pennsylvania's largest professional theaters offers year-round programming in two performance spaces, mixing contemporary plays, music theater, classics and world premieres.
39 Conestoga Rd., Malvern. PeoplesLight.org
* *Check website for updates*

Theatre Horizon

A professional nonprofit theater company producing dramas and musicals and presenting original works.
401 DeKalb St., Norristown
TheatreHorizon.org
* *Check website for updates*

DELAWARE

The Candlelight Theatre

Celebrating 50 years of dining and entertainment, Delaware's first dinner theater offers musicals, comedies, comedy club, quizzo and varied concerts.
2208 Millers Rd., Wilmington
CandlelightTheatreDelaware.com
* *Beehive, Ain't Misbehavin*

Delaware Theatre Company

Experience Broadway-caliber productions at this spacious regional theatre. Located on the Wilmington Riverfront, DTC has free parking and a concessions stand with wine, beer and light snacks.
200 Water St., Wilmington
DelawareTheatre.org
* *The Whitney Project—A Celebration of Black Joy, Tony Braithwaite—Me, My Mic, and I*

The Playhouse on Rodney Square

Located in the Hotel du Pont, stars of stage and screen have graced the Victorian stage since 1913.
1007 N. Market St., Wilmington
ThePlayhouseDE.org
* *Check website for updates*

PHILADELPHIA

Forrest Theatre

1114 Walnut St. ShubertEvents.com

Merriam Theater

250 S. Broad St. KimmelCenter.org
* *Modern-Day Carmen Fantasy, Bronfman Plays Beethoven*

Philadelphia Theatre Company

480 S. Broad St.
PhiladelphiaTheatreCompany.org

Walnut Street Theatre

825 Walnut St. WalnutStreetTheatre.org
* *Disney's The Little Mermaid, Noël Coward's Blithe Spirit, On Your Feet!*

THEATER – COMMUNITY

SUBURBAN PA COUNTIES

Barley Sheaf Players

Housed in the old Oddfellows Hall, offering a five-show season, summer youth programs, Play Festival, holiday production and children's workshops.
810 N. Whitford Rd., Lionville. BarleySheaf.org
* *Les Miserables (School Edition)*

Footlighters Theater

Since 1930, this group has continued to entertain Main Line audiences with each production.
58 Main Ave., Berwyn. FootlightersTheater.com

Forge Theatre

Year-round entertainment with six productions.
241 First Ave., Phoenixville. ForgeTheatre.org
* *Dearly Departed, Guys and Dolls*

The Players Club of Swarthmore

A community-based theater with seven main stage shows, plus smaller "Second Stage" productions.
614 Fairview Ave., Swarthmore
PCSTheater.org

DELAWARE

The Brandywiners, Ltd.

The Brandywiners perform annually at Longwood Gardens.
P.O. Box 248, Montchanin. Brandywiners.org

Delaware Children's Theatre

Popular theater productions that entertain and educate.
1014 Delaware Ave., Wilmington
DEChildrensTheatre.org

Wilmington Drama League

Hosting volunteer-produced performances, plus children's theater performances.
10 W. Lea Blvd., Wilmington
WilmingtonDramaLeague.org ♦



8. Keswick Theatre of Performing Arts

9. Citadel Country Spirit USA

10. Delaware Symphony Orchestra



Outdoor Concerts

Through August 22

Delaware County Summer Festival
Upper Providence. DelcoPa.gov/Departments/Parks/SummerFestival.html

Through September 25

Outdoor Concerts at People's Light
Malvern. PeoplesLight.org

Through October 30

Longwood Gardens Concerts
Kennett Square. LongwoodGardens.org

July 1, 22, August 13

Music at Marshall
West Chester. MarshallSquarePark.org

July 8–29

Summer in the Park Concert Series
at Wilson Farm Park. Wayne
Tredyffrin.org/Departments/Parks

July 11

Concerts in the Courtyard
Willows Park Preserve, Villanova
WillowsParkPreserve.org

July 11–October 3

Long's Park Summer Music Series
Lancaster. LongsPark.org

July 17

Tie-Dye Music Festival at
Community Arts Center. Wallingford.
CommunityArtsCenter.org

August 6–15

Musikfest.
Bethlehem. Musikfest.org

August 7–8

Wilmington's Riverfront Blues Festival
Wilmington. RiverfrontBluesFestDE.com

August 8, 22

Miller Park Summer Concert Series
Exton. WestWhiteland.org

August 19–22

Philadelphia Folk Festival
Upper Salford Township, PA. PFS.org

August 27–29

Citadel Country Spirit USA
Glenmoore. CountrySpiritUSA.com

August 28

People's Festival—
27th Annual Tribute to Bob Marley
Wilmington. PeoplesFestival.com

September 17–19

XPotential Music Festival
Camden, NJ. On the Waterfront
XPN.org

September 19

Turk's Head Music Festival
West Chester. TurksHeadFestival.com

Getaway Beyond PA

Rachel Thompson

From history hubs and glass museums to hot springs and sculpture gardens—there's plenty to explore during a weekend getaway in our neighboring states!



COLONIAL WILLIAMSBURG, VA

5 HRS

What better way to celebrate America's Independence than at one of our country's historic cities—Colonial Williamsburg. This history hub (along with nearby Jamestown and Yorktown) is the world's largest living history museum with 301 acres of iconic sites, 100 gardens, historic taverns and two world-class museums to explore. Best to plan a few days here to get the most from this immersive experience.

Leave behind the hustle and bustle of modern streets as you're transported back to quieter Colonial times with a horse-drawn carriage ride through the Historic Area. Or get into the spirit of 1776 at the musket range, where you can learn to fire a flintlock musket and get drafted to fight the British! Head down Duke and Gloucester Street and pop into Colonial-style shops for pottery, housewares, baked goods and other 18-century treats.

For those 21 and up (modern laws still apply) end the night by raising a mug of ale while digging into hearty pub fare at Chowning's Tavern or stepping back in time to 18th-century elegance at King's Arms Tavern.

It's where everyone will become a history fan. ColonialWilliamsburg.org.

BERKELEY SPRINGS, WV

3 HRS

In need of an extended spa retreat? Visit America's first spa in Berkeley Springs, WV. This historic spa town—even visited by George Washington 250 years ago—is perfect for a weekend getaway filled with relaxation and rejuvenation.

Named by *USA Today* in 2020 as one of the "Top 10 Best Small Historic Towns," Berkeley Springs boasts warm mineral pools, world-class dining, full-service spas and more than a hundred lodging options from elegant B&Bs to historic inns. Take a dip in healing waters in the centuries-old historic baths in Berkeley State Park, frequented by locals and tourists alike. The warm 74 degree temperature allows minerals to easily dissolve in the water for quicker absorption and increased relaxation. Another spa option is the newly opened Berkeley Springs Salt Cave offering halotherapy (a form of salt therapy) and infrared sauna rooms.

After a day of relaxation, make the trip to the downtown historic district with blocks of distinctive shops selling everything from antiques and art to cheeses, candles and old-fashioned candy. Grab a bite at one of the restaurants in town like Berkeley Springs Brewing Company for BBQ and craft beer brewed using the spring's mineral water or Lot 12 Public House for upscale comfort cuisine in an elegant atmosphere.

Head home recharged. BerkeleySprings.com.



GROUNDS FOR SCULPTURE, NJ

1.5 HRS

Discover the beauty, charm and whimsy that awaits at the Grounds for Sculpture in central New Jersey. This combo museum-sculpture garden-arboretum, spread across 42 picturesque acres, is perfect for wandering and discovering hundreds of contemporary sculptures—from emerging to distinguished artists, including renowned sculptor and gardens founder, Seward Johnson.

With flowers in bloom and native and exotic plant filling the gardens, this magical place lets visitors get lost in the beauty of art set in nature. Enjoy live performances, lectures from creative minds, workshops to feed your inner artist, plus rotating exhibits like the current "Bruce Beasley: Sixty Year Retrospective, 1960–2020" displayed outdoors and in the museum building.

After working up an appetite, head to the Rat's Restaurant, named for the *Wind in the Willows* character, Ratty. Dine in for country French cuisine and award-winning views of a recreation of Monet's bridge or picnic in the park with a starter, bottle of wine and sandwich options.

Art + nature = a perfect getaway. GroundsForSculpture.org.



DAVID MICHAEL HOWARTH PHOTOGRAPHY

CORNING, NY

4 HRS

Head north of the PA state line and spend some time in the charming town of Corning, NY, full of quaint shops and historic innovations.

Take a stroll through picturesque historic Market Street, named by *Travel & Leisure* as one of "America's Most Beautiful Town Squares," and delight in over a hundred boutiques, art galleries and studios, along with plenty of spots for craft beverages and delicious food. Nature lovers can revel in miles of beautiful trails at nearby Spence Crest Nature Center.

For a little history, check out the Corning Glass Museum and experience the town's claim to fame. Also known as America's Crystal City, Corning has been at the forefront of all things glass (think Edison's light bulbs, fiber optics, Gorilla Glass). Get a glimpse of more than 3,500 years of historic glass and marvel at live glassblowing demos by guest artists. Prep for the trip by



binging Netflix's glass-blowing competition show, "Blown Away," featuring contestants competing for residency at the museum.

And plan a second trip in autumn for The Days of Incandescence festival, when the town transforms back to the 1880s to celebrate its role in creating the first light bulbs for Thomas Edison.

With something for everyone, a visit to Corning seems crystal clear. CorningFingerLakes.com.

Family Fun in the Poconos

ENDLESS OUTDOOR ADVENTURES WITH EXCITEMENT AT EVERY TURN

Madison Meinel

FAMOUS FOR THE MANY campgrounds, scenic beauty and 150 clear lakes, the Pocono Mountains have attracted nature lovers and vacationing families for generations. Spend the weekend exploring the picturesque mountain slopes and hundreds of acres of state parks for tons of summer fun.

EMBRACE NATURE

Pack up the car, disconnect from devices, and commune with nature on a Poconos camping trip. Engage your inner adventurer with a visit to a campground and enjoy the fun of rustic camping—or with a few extra amenities.

Go old-school and pitch a tent in a campsite furnished with a fire ring, picnic table, water and electric or go off-the-grid at one of the bare bones campsites at **Jim Thorpe Camping resort** for a true “roughing it” wilderness experience.

For those desiring more luxurious accommodations, stay at the historic 1911 **Shawnee Inn**, now offering some modern twists like glamping (glamorous camping). Updated tents feature one queen bed, one daybed and a private deck overlooking

the scenic Delaware River. New features also include a canoe trip, breakfast in the River Room and a recreation attendant to assist with fire making. All the beauty of camping with none of the hard work!

OUTDOOR ADVENTURE

Keep the family busy with plenty of Poconos fun activities—from laser tag and go-karts to animal parks and ziplining.

Soar through **Skytop’s Treetop Adventure Course** and discover an array of activities. This wooded course reaches over 1,500 feet in height with challenging obstacles, including elevated bridgeways, hanging logs, walk-across ladders and five different ziplines. Or give Skytop’s 33-foot climbing wall a try as you tackle six different sides with difficulty ranging from beginner to advanced.

Then unleash your wild side at **Claws ‘N’ Paws Wild Animal Park**. See over 100 varieties of animals with everything from roaring lions to swinging gibbons. Little ones can feed lory parrots and pet animals in a special petting zoo. And you can try your hand at an archeological adventure as you search for dinosaur bones in the Dino Dig.



Shawnee Inn Glamping



Skytop Treetop Adventure Course



Claws ‘N’ Paws Wild Animal Park



Whitewater rafting

Round out the day at **Costa’s Family Fun Park** with activities like go-karts, bumper boats, laser tag, mini golf, batting cages and more. Plus, you can finish the fun with family-favorite snacks including hand-dipped Hershey’s ice cream.

MAKE A SPLASH

Stay cool and explore the 150 lakes and 170 rivers the Poconos has to offer. Whether you prefer kayaking and canoeing, whitewater rafting and tubing, or just sunbathing and floating, you’ll find scenic waterways calling your name throughout the region.

Brave the rapids of the Lehigh River with **Jim Thorpe’s River Adventures**. Enjoy hours of exciting whitewater rafting with options for every experience level. Go full-force dam release for a challenging ride or choose a calmer family-style trip and get a glimpse of the surrounding wilderness and wildlife. Be prepared for stops along the way for cascading waterfalls and swimming holes.

If you prefer a leisurely drift, head to the inlets of **Lake Wallenpaupack** and spend the day swimming and soaking up the sun. Paddle the lake with a canoe, kayak or stand-up paddleboard and enjoy the serene waters. Plan to extend the summer by coming back for one last hurrah at the **Wally Lake Fest**, August 27–29, for live music, good food and even more lake-side fun.

And of course, spend a day at **Camelbeach Mountain Waterpark** for adrenaline-filled waterslides and poolside lounging. With over 37 rides, slides and attractions, Camelbeach Mountain offers thrills from mild to wild at the biggest waterpark in Pennsylvania. Just remember to pack your swimsuit!

EATING AND DRINKING

After a night at the campsite and a day in the water, it’s time to grab a bite to eat at one of the many Poconos restaurants. Explore the flavors of the region through farm-to-table dining, chef-designed tasting menus and family-friendly spots.



Costa’s Family Fun Park



B-Lux Grill & Bar



Camelbeach Mountain Waterpark

Indulge in signature burgers and handcrafted shakes made with fresh and locally sourced ingredients at **B-Lux Grill & Bar**. Even adults can get their sweet fix with one of their hard shakes, like the Kentucky Brain Freeze made with Maker’s Mark whiskey, caramel and peanut butter.

Class it up at the **Frogtown Chophouse**, perfect for casual fine dining. This classic American chophouse, dating back to the early 1800s, is anything but old-fashioned. Choose delicious steak and seafood entrees like crispy duck topped with a raspberry sauce or barramundi filet with lemon garlic butter, plus artisan cocktails. Sip

a Dirty Toad, A’Pear’ently “Frogtinis” or classic cocktails like an Old Fashioned or Chophouse Sangria.

Make a special toast to the night at one of the many area breweries and distilleries, including the **Pocono Brewery Company** with locally inspired craft beers available by the glass, flight and growler and served alongside wood-fired pizza.

Wherever you stay and whichever path you take, summer fun is always the destination in the Poconos Mountains! ♦

For more info visit PoconosMountains.com

No Need to Pack to Visit Bucks County

HOME TO CONCRETE CASTLES AND HISTORIC DOWNTOWNS, THIS NEIGHBORING COUNTY IS RICH IN HISTORY, ENTERTAINMENT AND FAMILY FUN.

Madison Meinel

Tucked in the rolling hills of Philadelphia's countryside, Bucks County boasts lush farmland, idyllic towns and bountiful vineyards. Stay close to home for a day trip or weekend getaway and delight in museums, gourmet dining and fun for the whole family.

FAMILY ATTRACTIONS

Just because school is out doesn't mean learning has to stop. A visit to Doylestown can include magnificent museums for fun mixed with a little education.

Climb the many steps to hidden rooms filled with beautiful tiles at [Fonthill Castle](#), the former estate of renowned archeologist and tilemaker Henry Mercer. With over 44 rooms including 18 fireplaces and 200 windows, there's plenty here to explore. Next stop is the [Tileworks Museum](#) to get an up-close look at handmade tiles and mosaics in the same style seen in Fonthill Castle.

Then step back in time at the nearby [Mercer Museum](#), another castle housing more than 40,000 early American artifacts, and marvel at antiques like a fire engine

suspended in air, horse-drawn carriages and a Conestoga wagon. Or satisfy your inner artist at the [Michener Art Museum](#), featuring the largest public collection of Pennsylvania Impressionist paintings. Get inspired by regional artists displayed throughout the galleries or while wandering through the outdoor sculpture garden.

If you've got energy to burn, gather up the kiddos and head to [Sesame Street Park](#) in Langhorne. Plan a day of whirling rides, splashing slides and visits from your favorite Muppets—Elmo, Big Bird and Cookie Monster. Delight the little ones with family-friendly rides or cool off at the water park filled with tube slides, a lazy river and a kid-friendly wave pool. End the day with a live show or catch one of the daily parades as you wander through Sesame Street Park.

GET OUTSIDE

Disconnect for the day and embrace area's parks, offering everything from historic spots to lake-day fun.

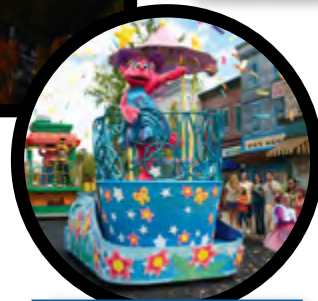
Travel back to 1776 at [Washington Crossing Historic Park](#) and explore the



Mercer Museum



Fonthill Castle



Sesame Street Park



Washington Crossing Historic Park



Crossing Vineyards and Winery

PHOTOS COURTESY OF VISITBUCKSCOUNTY.COM



Gather together for a family dinner or enjoy a romantic night out at one of the many area restaurants.

500-acre park preserve where General George Washington famously led troops across the Delaware River during the Revolutionary War. Check out restored 18th-century buildings and homes, Revolutionary War gravesites and climb Bowman's Hill Tower for a bird's-eye view.

Make your own music at [Ringing Rocks Park](#) in Upper Black Eddy. BYOH (bring your own hammer) and strike the boulder field to hear the rocks ring like a bell. Make a game of it by recreating favorite songs and having your family name that tune. Then take a short walk to the county's largest waterfall, High Falls, and take in all the beauty nature has to offer.

Or you can pack a picnic and head to [Nockamixon State Park](#) in Quakertown to enjoy biking and hiking trails throughout the 5,286-acre park. Looking for low-key fun? Lounge and splash around in Lake Nockamixon for a day in the sun.

TOAST THE TOWNS

Sip your way through the area's beautiful landscape and experience the flavors of [Bucks County's Wine and Ale Trail](#).

Located less than a mile from the site where Washington crossed the Delaware River, [Crossing Vineyards and Winery](#) sits on a 200-year-old estate with views perfect for indulging in their award-winning wines after touring the property. Or stroll through the vineyards of one of Pennsylvania's first farm wineries at [Buckingham Valley Vineyards and Winery](#) and sample over a dozen varieties of wine, including their famous wine slushies.

Beer lovers can grab a stool at the bar and let a local brew master pour a pint of craft beer at one of the 11 breweries along the Ale Trail. Toast your vacation with seasonal beers like Summer Solstice (brewed with lemon zest and Caribbean spices) at [Bucks County Brewery](#) in Pipersville or crack open a can of Peel & Petal (wheat ale with orange, chamomile and coriander) at [Free Will Brewing Company](#) in Peddler's Village.

DINE DOWNTOWN

After a day of adventure, gather together for a family dinner or enjoy a romantic night out at one of the many area restaurants.

Discover a storybook village with picturesque Colonial-style buildings, award-winning gardens and tempting dining spots at [Peddler's Village](#). Get the true town experience and dine at the flagship restaurant, the [Cock 'n Bull](#), serving traditional American classics like savory chicken pot pie and short rib burgundy, all offered in a charming setting. Or grab some grub at the [Buttonwood Grill](#) and dig into burgers, including the Guinness Onion 'n' Bacon burger smothered in Guinness BBQ onions, sharp cheddar and creamy horseradish.

Treat your taste buds to delicious dishes in [Doylestown](#) after you take a stroll along East State Street, known as Restaurant Row for its eclectic collection of locally owned dining spots and cafes. Stop by [M.O.M.'S Maxwell's on Main](#) for Southern fried chicken entrees, including classic chicken and waffles with maple chipotle syrup or a fried chicken sammie with Memphis slaw and pickle aioli. Another option: embrace the Italian influence of [Genevieve's Kitchen](#) and delight in mascarpone carbonara flatbread, duck and wild mushroom Bolognese and white bean and basil ravioli.

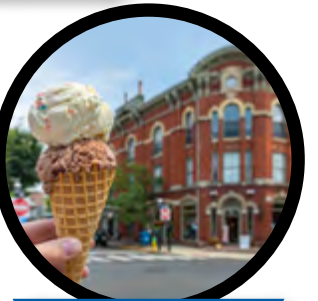
End the night on a sweet note at nearby [Nina's Waffles and Ice Cream](#) (locations in Peddler's Village and Doylestown) and try their s'mores waffle with torched fluff and chocolate ganache or the Mad Crack with vanilla ice cream and saltine cracker brittle made with toffee and chocolate.

There's plenty to do, see and eat, so plan your getaway in Bucks County this summer! ♦

For more info [VisitBucksCounty.com](#)



Wine Trail



Doylestown



Cock 'n Bull



Buttonwood Grill



Nina's Waffles and Ice Cream

Welcome to County Lines Country



2021-2022
Guidebook

▶ We are so excited to bring you our Annual Area Guide for 2021! After limiting our excursions last year, it's time to get out and about and reacquainted with the many truly spectacular attractions in our area. For visitors, newcomers or longtime residents, this Guide should help you find many things to discover.

And even if you think you know what's in our backyard, revisit with fresh eyes. There's so much to see and enjoy. Plus, it's pure pleasure to be out in the world again.



Day Trips and Outings

As we've done for many years, we begin our exploration of our area at the three blockbuster local sights—Longwood Gardens, Brandywine River Museum of Art and Winterthur Museum, Garden and Library. There are new reasons to return each year. Here's what to see in 2021.

TIP: We generally suggest buying a Brandywine Treasure Trail Passport for discounted admissions. This year there's a variation on that program: Brandywine Valley Adventure Pass lets you build your own plan for exploring our area's history, culture and gardens. Prices vary on these customized plans. Visit WilmingtonDE.com.

Start with the Big Three

Longwood Gardens

What comes to mind when you think of Longwood Gardens? Pierre du Pont's legacy, top garden spot in the country (or some say, in the world)? Or is it fountains and fireworks? It's the fountains.

Fountains spin and soar during the 12-minute scheduled daily fountain performances in the Main Fountain Garden, featuring 1719 jets and water reaching 175 feet high (through October 31). For the next level of fountain fantasia, visit Thursday through Saturday evenings (through September 26) for the Illuminated Fountain Performances and an extravaganza of water, colored lights and music.

For the ultimate fountain fun, make reservations for one of the six Fireworks and Fountain Shows and a dazzling evening of entertainment (check the website for dates and themes). Each show has a special theme—from Sleeping Beauty to Hip Hop Mixtape, and for Boomers, Start Me Up. All are thrilling to experience. Just reserve soon!

Terrace Café, 1906 Restaurant and Beer Garden are available for a restorative break, and a lovely Garden Shop offers souvenirs for your visit. Open daily (except Tuesdays).

Routes 1 & 52, Kennett Square. LongwoodGardens.org.

Note: Longwood Reimagined, the most ambitious garden revitalization in a century—and that's saying something—closed down parts of the west conservatory area until 2024, but there's still more than enough to see.



TIP: Stop reading and make reservations now—lawn or reserve seating—for Fireworks and Fountains. The shows sell out fast!



PHOTO BY MARK GORMEL



Brandywine River Museum of Art

Even while the converted 19th-century mill housing the museum was closed for renovations in February, this riverside home to a distinctive collection of American art—well known for its generations of Wyeth works (N.C., Andrew, Jamie)—continued to provide a treasure trove of on-line resources. We do love the nature videos, with the Brandywine River views still providing that needed moment of zen.

Now reopened, and with a towering entrance sculpture to welcome back visitors, the museum launched an on-site exhibit, "Ralston Crawford: Air & Space & War," through September 19. Trained at the Pennsylvania Academy of Fine Arts and Barnes Foundation, Crawford (1906-1978)

created art influenced by his experiences with aviation, including his assignment to document the atomic bomb test in the Bikini Atoll. The 80 works in this significant collection demonstrate Crawford's visual expression of highly abstract concepts.

For an exhibition with a very different look, see "America's Impressionism: Echoes of a Revolution," opening October 9.

Leave time to visit the Millstone Café with restful river views and walk the grounds planted with native flowers and plants, a nod to the Brandywine Conservancy, headquartered there.

Route 1, Chadds Ford. BrandywineMuseum.org.



Bikini Atoll by Ralston Crawford

Winterthur Museum

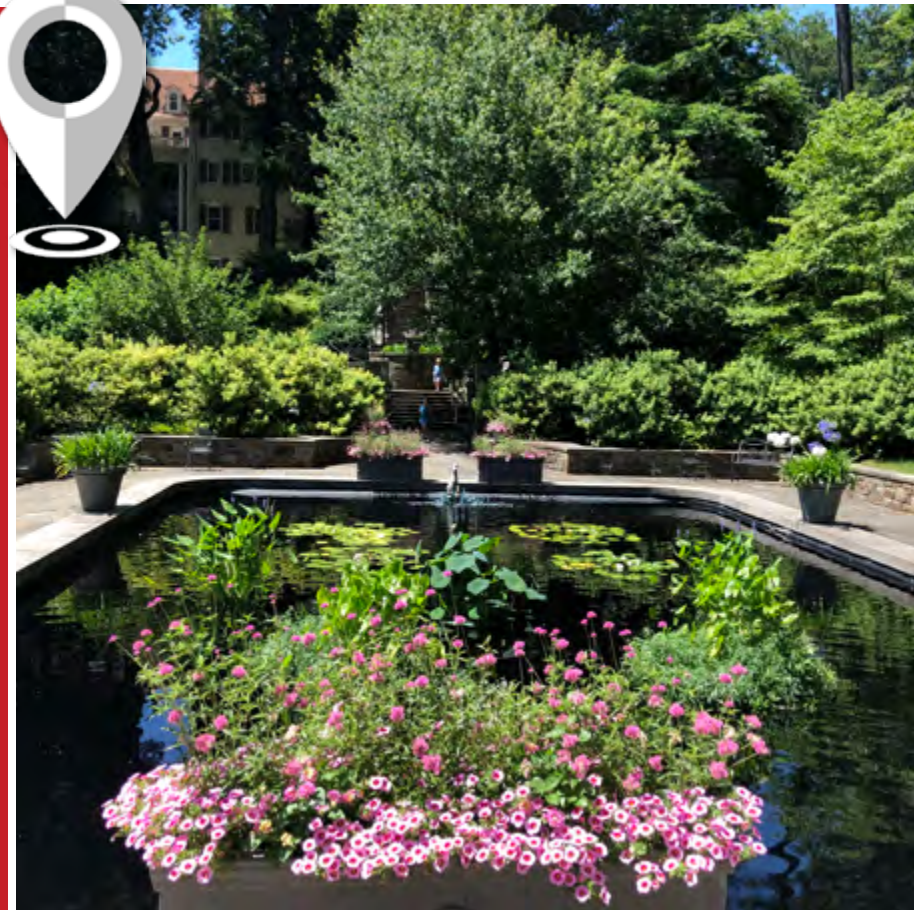
Yes, this stop offers a museum, gardens and a notable library—all superlative. First-time visitors should visit the extraordinary collection of American decorative arts displayed in the former du Pont mansion, then roam the immaculately tended gardens. Kiddos will enjoy the specially designed Enchanted Woods, a three-acre fairy garden.

For a deeper dive, visit this summer's special exhibit, "Outside In: Nature-inspired Design," ending August 3. Join a curator's gallery walk (July 6, August 3) to see how Winterthur's holdings and selections from the Delaware Museum of Natural History's collection (temporarily closed) demonstrate the connection between nature and the decorative arts.

Join the celebration of American artistry and craftsmanship at Winterthur's first Artisans Market (July 17 & 18) on the grounds. The region's most talented craftspeople present examples of modern-day artisanship. Browse and buy antiques and collectibles, including furniture and home décor, up-cycled and architectural salvage pieces, high-quality crafts, vintage clothing and jewelry, original art, garden items and more.

For a different way to enjoy the grounds, try Wine through Winterthur walks featuring cocktails, small bites, live music. You missed Wine and Daffodil Walk, but can join Mixers & Elixirs, held at a pop-up location on the grounds. Botanical Cocktail, July 23, Margarita Madness, August 27, and Nothin' But Shrub, September 24, are just a few to entice you.

5105 Kennett Pk., Winterthur, DE. Winterthur.org.





Explore Chester County + Delco

Chester County has long been a destination for history buffs headed for places like Brandywine Battlefield State Park and Chadds Ford History Center, as well as lovers of special interest museums, including the Kennett Square Underground Railroad Center and Christian Sanderson Museum. The area is laced with historic markers and reminders of our past.

There's another side to Chester County—a vibrant, fast-growing community dotted with ever-changing towns to explore. Here are a few of our favorites, worth a visit or two this summer and beyond, to glimpse the future of this area.



West Chester

We'll start with the county seat and our magazine's home base for 45 years. West Chester is a picturesque and historic community boasting small-town charm and cosmopolitan flair. In addition to its many accolades, including as a Great American Main Street, West Chester was called "one of the world's most perfect small towns" by the *Philadelphia Inquirer*.

And if that's not enough to entice you, remember West Chester has long been a top area dining destination as home to about 70 eateries and drinkeries—try Wrong Crowd Beer and Sterling Pig Brewing. From Iron Hill Brewery, with 20-some years in residence, to recent arrivals including Stove & Tap, Sedona Taphouse and Greystone Oyster Bar, there really is something for every taste. Again this year, Gay Street will close to traffic to create a multi-block pedestrian mall and Open-Air Marketplace.

For more fun, there's music in Marshall Park, the return of the Turks Head Music festival on July 18 and plenty of live entertainment—Dueling Pianos, tribute bands and more—at Uptown! Knauer Performing Arts Center throughout the year. DowntownWestChester.com.

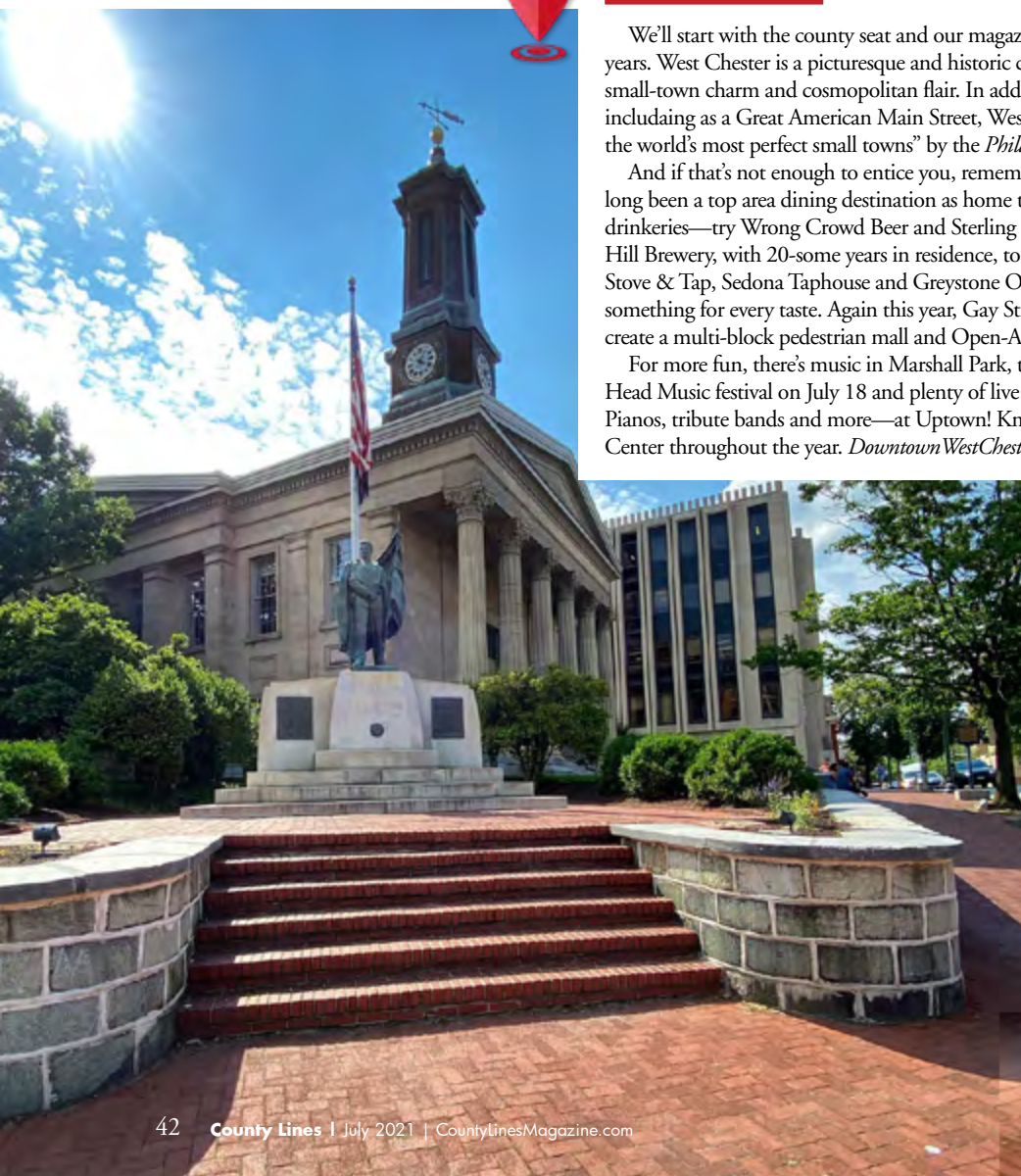


PHOTO BY CHORUS PHOTOGRAPHY



Phoenixville

It's a town on the rise after a history as an old mill town—home to Phoenix Iron Works and factories for boilers, silk and Majolica pottery. In its current renaissance, Phoenixville is a 2021 Travel Magazine "Most Charming Small Towns and Small Cities in PA."

Others may know Phoenixville for its other claim to fame: the town with the most breweries per square foot. (It's merely #10 in breweries per capita.)

To attract diners and shoppers, the town instituted Open-Air Set-Ups along two blocks of Bridge Street, the main thoroughfare. Through late November businesses can set up along the sidewalks and closed roadway. Enjoy al fresco dining at old favorites like Molly Maguire's and the Great American Pub, or newer additions like Avlos (in Majolica's former space) or Paloma's, a modern European restaurant.

Phoenixville hosts several annual festivals, but none better known than its July Blobfest, in honor of the 1950s sci-fi movie featuring scenes shot locally. The event is virtual again this year, with traditions with a twist. (Fans will film their own "Running out of the theater" footage.)

Finally, this town has its own Six Degrees of Kevin Bacon status. The well-connected star visited his grandmother here and returns from time to time.

[More at PhoenixvilleFirst.org](http://MoreatPhoenixvilleFirst.org).



Media, Yes It's Delco

"Everybody's Hometown" is Delco's county seat. So it makes sense that fans of HBO's recent hit "Mare of Easttown" might want to compare authentic regional accents with a certain British film star's.

Other attractions in Media Borough include two theaters (Hedgerow and Media Theatres), two parks (Rose Tree and Ridley Creek State Park), along with Tyler Arboretum, the PA Veteran's Museum and a trolley (route 101) that runs from Philadelphia through the center of town on State Street.

State Street is home to another draw: Summer Dining, when on Wednesday evenings and Second Saturdays through September, the downtown area is closed to traffic for al fresco dining.

As the country's first Fair Trade Town, Media is also home to an eclectic collection of shops, open for browsing during Summer Dining and other times and often staffed by the owners.

Mark your calendar for several musical festivals hosted most years—May's Americana Roots Ramble, June's State Street Blues Stroll and November's Jazz by Night Celebration.

[More at VisitMediaPA.com](http://MoreatVisitMediaPA.com).



Kennett Square

For a taste of southern Chester County, visit Kennett Square. How long did it take you to think "Mushroom Capital of the World"? Yes, it supplies about 60% of the country's mushrooms.

There are many connections to the industry, such as the Woodlands at Phillips Mushroom Farm. This retail store with special exhibits, set in an 1828 restored family farmhouse, is worth a visit for everything from mushroom puzzles to a 4.5-pound combo box of mixed fresh fungi to take home.

Food and drink are big draws, too. October's popular Kennett Brewfest and February's Winterfest attract beer fans from far and wide as they raise funds for Historic Kennett Square.

And small local eateries have garnered high profile fame. James Beard-award finalist Talulah's Table continues to wow foodies with its hard-to-score hyperlocal Farmhouse Table dinners. *Philadelphia Inquirer* food critic Craig LaBan gave the low-key La Peña Mexicana a rave for its authentic regional fare. And La Michoacana Homemade Ice Cream shop's corn, avocado, tamarind and guava cones have wowed no less a fan than President Biden.

[More at HistoricKennettSquare.com](http://MoreatHistoricKennettSquare.com).





Drive to Delaware

The First State is one of the first we think of for nearby beaches and tax-free shopping. But there's more to discover in Delaware. From pre-Colonial history, to the Underground Railroad to a brush with current history and a chance to spot our current president, there are many reasons to take a drive there.



Tri-State Marker

Want to stand in three states at once? Then hike out to the tri-state intersection of Pennsylvania, Delaware and Maryland, something that until around 2015 meant you would have to trespass on private land. Now there's an official trail.

The spot, about four miles northwest of Newark, DE, can be reached after a moderate-level hike from White Clay Creek State Park. Your destination is the stone marker at the site astronomer Charles Mason and surveyor Jeremiah Dixon determined when asked to settle a land dispute between William Penn and the Calvert family of Maryland. The pair marked the spot, the northernmost point on the Mason-Dixon Line, with a wooden marker in 1765, later replaced by stone in 1849.

Our photo is from the Pennsylvania side, but don't be fooled. The other two-sides are marked with M for Maryland, since Delaware was part of Pennsylvania in 1765, so no D on this marker.



PHOTO BY SAM HOLT



Historic Towns

As expected, the First State has its share of charming preserved historic towns. We recommend the town of New Castle, established in 1651, where William Penn landed in 1682. Stroll the cobble streets to the beautifully preserved Colonial town center on the Delaware River.

Take a walking tour to get a curated introduction to the town. At a minimum, be sure to visit Immanuel Church and its churchyard (dating back to 1703), and the George Read II House, a grand Federal mansion surrounded by a handsome garden. End the day with a hearty meal at Jessop's Tavern, in a circa 1724 building and servers in period costumes. More at NewCastleCityDelaware.gov.

The Historic Houses of Odessa are also worth a stop to see an outstanding collection of period household furnishings, fine and decorative arts. Odessa has five distinctive properties that

are unique examples of the architectural heritage of Colonial Delaware and tell of Odessa's role in the Underground Railroad.

For dining here, try Cantwell's Tavern, located in the center of town in a 19th-century building. Be sure to visit in September for the 8th Annual Historic Odessa Brewfest with craft beer, live music, great food, vendors and more. Date TBD. OdessaBrewfest.com, HistoricOdessa.org.



Bump into President Biden



With a long history of Biden bump-ins at local shops, restaurants and events, Delawareans got used to having the Biden family pop up around the state—at their Wilmington home or Rehoboth beach house. If you're near the President's usual haunts and see large men in dark suits on a sweltering summer day, you just might score a spotting.

As a regular at the Amtrak station (now known as The Joseph R. Biden Railroad station), President Biden commuted between Wilmington and Washington D.C. during his tenure in the U.S. Senate. Walk (or ride) a mile in the President's shoes and give the commute a try.

A short walk from the station is the historic music venue, The Queen, where the Biden-Harris administration set up shop for their transition to the White House. Now you can watch a show and toast the President with a drink.

End the day with some presidential eats at Piccolina Toscana, a go-to Italian restaurant for the first family, and try President Biden's favorite dish, capellini al pomodoro. Or visit Café Verdi for his standard order of chicken parmigiana.



Harriet Tubman Underground Railroad Byway

Learn more about Harriet Tubman and the courage of other enslaved people on their journey to freedom as you take a self-guided driving tour through 98 miles of Kent and New Castle Counties in Delaware before ending in free Philadelphia. Delaware was the final slave state for those headed north. (Maryland offers another 125 miles of the Byway and many of the 45 historic sites along on the way.)

The Byway includes stops at Delaware's Old State House in Dover, The Corbit-Sharp House in Historic Odessa, and the Tubman-Garrett Riverfront Park in Wilmington, where you can see the dramatic statue, "Unwavering Courage in Pursuit of Freedom." Thomas Garrett was a fierce and prominent abolitionist and Underground Railroad stationmaster who helped 2700 enslaved people seek freedom.

The Byway was in the news last year when a group of seven women, under the banner "We Walk with Harriett," completed a 116-mile fundraising walk along the Tubman Byway in September 2020, ending in Kennett Square, PA. Hats off to them!



Rediscover Lancaster County

If you still think of Lancaster County as quaint, you're out of date. Lancaster is much more than buggies, straw hats and barns. It's got art galleries, specialty museums and parks to visit. You can hike, cycle, canoe or see it all from the sky in a balloon ride!

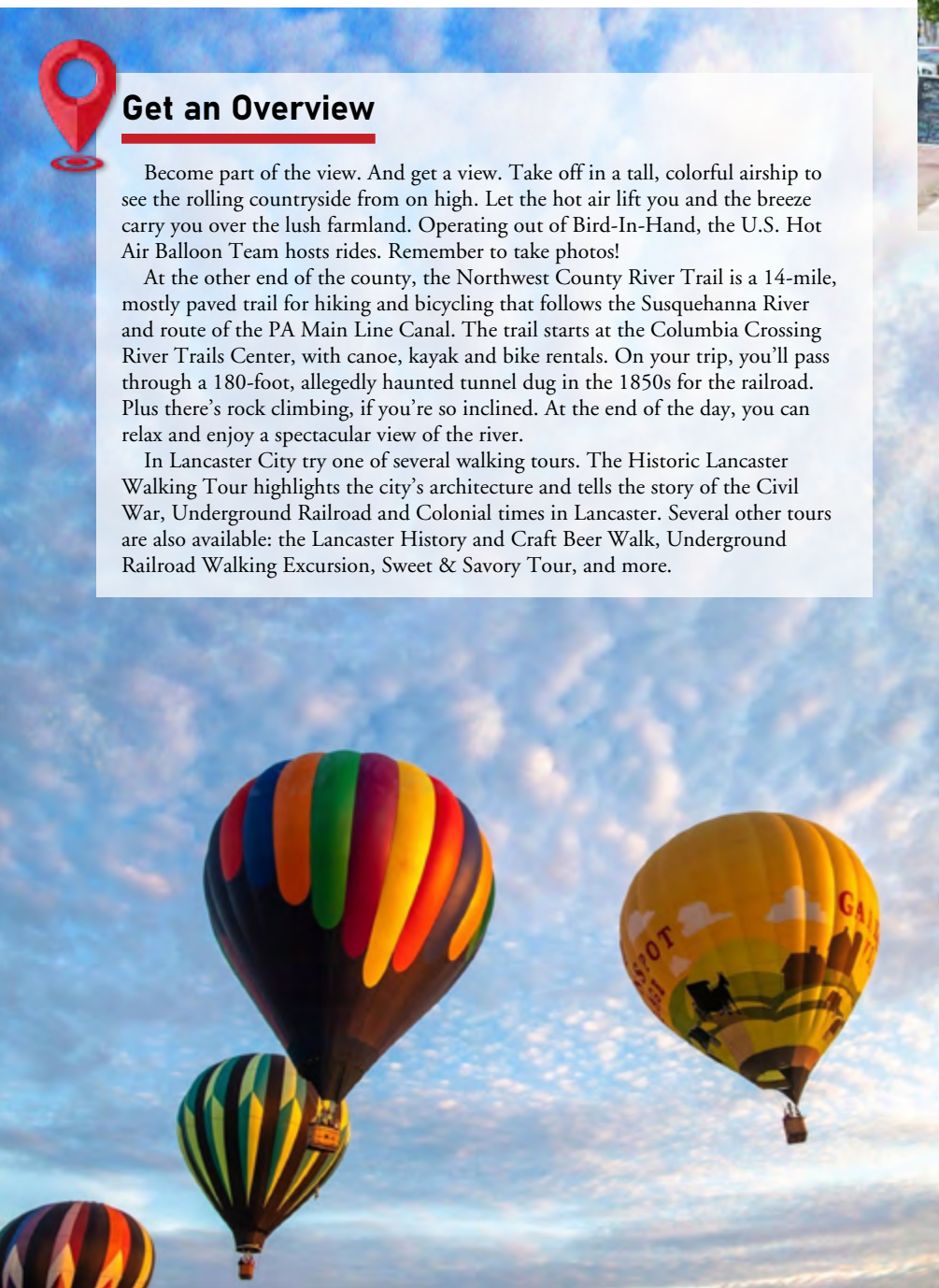


Get an Overview

Become part of the view. And get a view. Take off in a tall, colorful airship to see the rolling countryside from on high. Let the hot air lift you and the breeze carry you over the lush farmland. Operating out of Bird-In-Hand, the U.S. Hot Air Balloon Team hosts rides. Remember to take photos!

At the other end of the county, the Northwest County River Trail is a 14-mile, mostly paved trail for hiking and bicycling that follows the Susquehanna River and route of the PA Main Line Canal. The trail starts at the Columbia Crossing River Trails Center, with canoe, kayak and bike rentals. On your trip, you'll pass through a 180-foot, allegedly haunted tunnel dug in the 1850s for the railroad. Plus there's rock climbing, if you're so inclined. At the end of the day, you can relax and enjoy a spectacular view of the river.

In Lancaster City try one of several walking tours. The Historic Lancaster Walking Tour highlights the city's architecture and tells the story of the Civil War, Underground Railroad and Colonial times in Lancaster. Several other tours are also available: the Lancaster History and Craft Beer Walk, Underground Railroad Walking Excursion, Sweet & Savory Tour, and more.



Enjoy Art

Located mainly along the first and second blocks of North Prince Street in downtown Lancaster City, Gallery Row is the heart of the thriving art scene. If you're lucky or plan well, visit on a First Friday, when the area's many galleries, shops, restaurants and entertainment venues come alive after 5.

The Demuth Museum on East King Street is in a home that belonged to artist Charles Demuth over 200 years ago. Collected worldwide, Demuth was a renowned modernist painter. That museum was joined administratively with the Museum of Modern Art, exhibiting regional, national and international works.

The Phillips Museum of Art, located on the Franklin & Marshall College campus, has a mission to foster an appreciation of the arts, including contemporary, historical and multicultural materials.



Visit More Museums

If you're honest, you didn't get much from class trips to museums of natural history and science. Certainly not compared with what they offer.

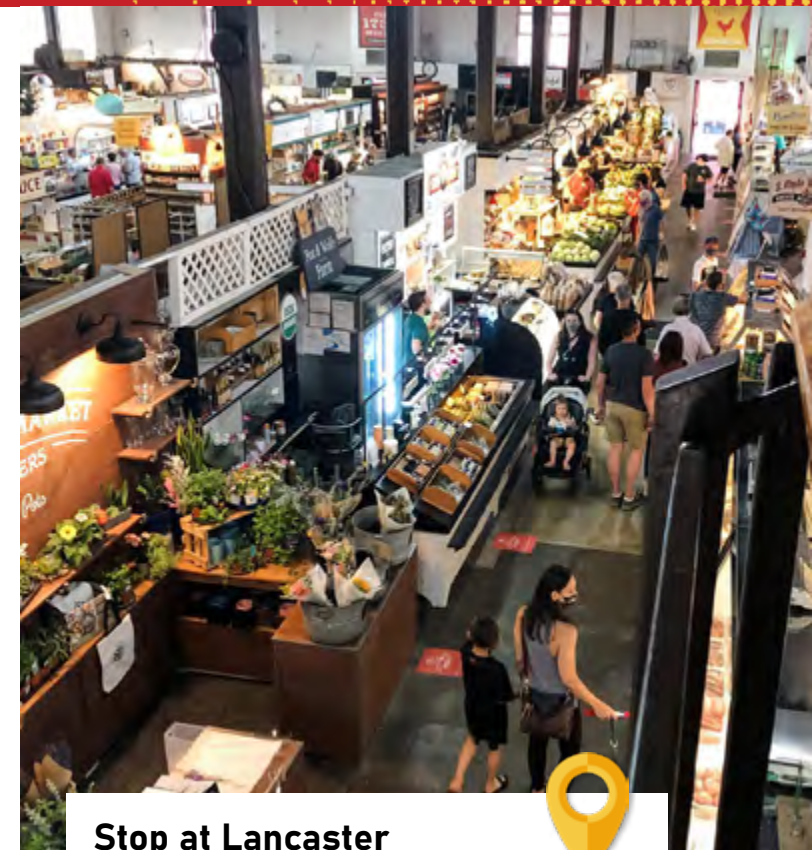
As an adult, though, you can dawdle, read the captions of the exhibits, study and appreciate. For that, we recommend the North Museum in Lancaster City. Visit the planetarium, the bug room, the dinosaur room, the bird room and more. Oh, yeah, the kids will have fun too.

If you're fascinated by railroads, the Railroad Museum of Pennsylvania in Strasburg and National Toy Train Museum in Ronks are for you.

In love with automobiles? Car guys should head for Barry's Car Barn in Intercourse, specializing in muscle cars from the 1950s through 1970s.

News buffs will enjoy the Lancaster Newspaper's Newseum, which can be viewed from Lancaster City's sidewalks. The display traces the history of newspapers and their production over 200 years.

There's also the National Watch & Clock Museum in Columbia, with more than 13,000 timepieces on display. One 1878 clock is 11 feet high and 8 feet wide, shows phases of the moon, constellations and tides!



Stop at Lancaster Central Market

A must-see for any visit and open since 1730, Central Market has about 60 vendors, is owned by the public and managed by a nonprofit trust. Since 1889 it's been in its current building in downtown Lancaster City. For the last 60 years, you could buy horseradish from Long's there. For over 100 years, you could have bought produce there from Stoners.

Baked goods, cheeses, dairy, meats, poultry, fish, candy, chocolate, snacks, ice cream, coffee and tea, sandwiches, soups and salads ... You should eat there at least once for a quintessential Lancaster County experience.

More at DiscoverLancaster.com.



Kick Back the Parks

Covering 544 acres at the southern end of Lancaster City, Central Park has a pool, skate park, basketball courts and trails for hiking, cycling and horseback riding.

On the outskirts of Lancaster City is Long's Park: 80 acres of picnic pavilions, a petting farm, children's playgrounds,

tennis courts, fitness trail and a three-acre, spring-fed lake. Through the summer months, on Sunday nights for almost 60 years, musical concerts are held at its amphitheater. Long Park's Labor Day Arts and Crafts Festival draws over 200 exhibitors from across the mid-Atlantic.





Main Line and Beyond

The Main Line is still a storied place—especially for real estate brokers—though many of its finest estates have been torn down or surrounded by somewhat smaller homes. (See our article “Found Mansions on the Main Line” in our May issue.)

One simple way to get to know the Main Line is to take the SEPTA R-5 train, now known as the Paoli-Thorndale line. As you head west from Philadelphia, recount the mnemonic “Old Maids Never Wed And Have Babies” as you pass the stops for Overbrook, Merion, Narberth, Wynnewood, Ardmore, Haverford and Bryn Mawr. That leaves out Gladwyne, Villanova, Wayne, Devon, Malvern and Paoli among others that have laid claim to Main Line status.

We won’t attempt to settle the dispute here. Let’s just note that Main Line homes, schools, country clubs, public gardens, shopping, dining and general lifestyle make it a very nice place to live and visit.



To Haverford, Bryn Mawr, Villanova



Next up are three college towns. Haverford College’s campus has an idyllic duck pond and three-mile nature path, while Bryn Mawr College boasts one of the best sledding hills and striking dorms built by Louis Kahn. A Frank Furness-designed building at Montgomery and Morris Avenues is not part of the college, but is the Baldwin School, a top girls prep school.

The town of Bryn Mawr is stretched along Route 30 and consists largely of small shops and an international array of restaurants—Chinese, Japanese, Thai, Indian, Italian, Mexican and others.

You can’t miss Villanova University, with its 260-acre campus marked by the twin spires of St. Thomas of Villanova Church. The stadium and gym are on the east side of campus. Inside the gym, the halls are lined with trophies of the school’s athletic conquests. Keep your eyes peeled for the champion basketball team. If they’re around,

you’ll notice them—they tend to be almost 7 feet tall.

The University’s new-ish three-theater Joan and John Mullen Center for the Performing Arts is currently closed due to the pandemic, but should open in the fall.

From City Line to Ardmore



An easy way to visit the Main Line is to drive along Lancaster Pike, aka Route 30, picking it up at City Line Avenue and heading west.

First you’ll see St. Charles Borromeo Seminary, which, at 75 acres, was one of most valuable piece of undeveloped land left in the area. In 2019 it was sold to Main Line Health, which owns Lankenau Hospital across the street. Plans for the property have not been disclosed.

About a mile down Route 30 is Ardmore. To the north, across the train tracks, is Suburban Square, one of the country’s first outdoor shopping centers. Strawbridge & Clothier opened in 1930, but was replaced with a 70,000-square-foot athletic club in 2017.

Suburban Square now has more than 72 stores, including a farmer’s market, Trader Joe’s and more. Recently opened Lola’s Garden is a trendy spot from the folks from Morgan’s Pier and Harper’s Garden. Its popular indoor/outdoor dining space seats 237 and is committed to sustainability with local food and a lineup of PA beer, wine and spirits.



PHOTO BY BRENDA CARPENTER

On to Wayne & Devon



Known for its assortment of boutiques and many restaurants—Teresa’s, Christopher’s, Margaret Kuo’s, White Dog—Wayne is worth a stop. Don’t miss new-ish Rosalie, featuring Italian soul food, at the Wayne Hotel. This historic hotel was built in 1906 and hosted notables such as Norman Mailer, Jack Nicklaus, M. Night Shyamalan, Bruce Springsteen and Stanley Tucci.

At Eagle Village Shops, you should stop at the lovely Valley Forge Flowers for all things garden related. There are also several boutiques and interiors shops to browse. Again, you’ll encounter some outstanding eateries, including Autograph Brasserie and Taste of Britain tea room.

Continue west and you’ll come to a sky blue arena and a major landmark on the left: the Devon Horse Show grounds. If there’s no current horse show, you can peek inside by turning left at Dorset Road.

For eleven days in most Mays (its been on hiatus the past two years), equestrians from around the world perform there at the Devon Horse Show and County Fair. In July, there’s the Summer Series and Brass Ring; in September and October, the Devon Fall Classic and Dressage at Devon. A special place for equestrians.

End at Area Parks

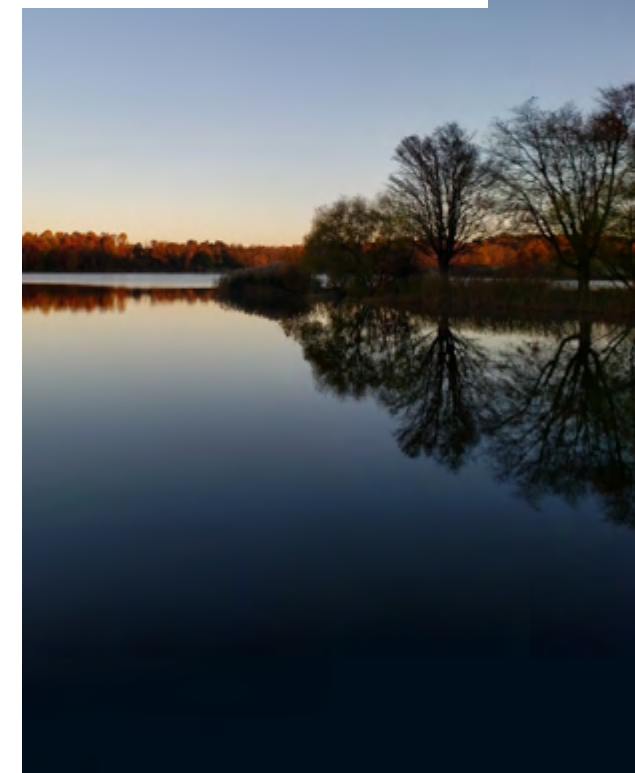


Valley Forge National Historic Park, where George Washington and the Continental Army spent the winter of 1777-78, is now a premier outdoor destination in the National Park System. It’s a great place to walk or bicycle: 3500 acres of history and nature between the Schuylkill River and Valley Creek. Learn about our troops and about the park’s 225 species of birds and 730 species of plants.

Farther west are two popular state parks. Marsh Creek State Park, near Downingtown, is 535 acres of tranquility with nearly 20 miles of trails, mostly open to horseback riding and mountain biking, a huge swimming pool, plenty of areas for picnicking. You can rent sailboats, kayaks, paddleboards and more.

French Creek State Park, near Douglassville, is on over 7700 acres, with 35 miles of trails and includes two lakes for fishing: 22-acre Scotts Run, stocked with trout, and 68-acre Hopewell, designated as a big bass lake. Rent boasts or cabins for overnight stays and play some Frisbee Golf!

Just a few of the wonderful places to enjoy a day in the country!

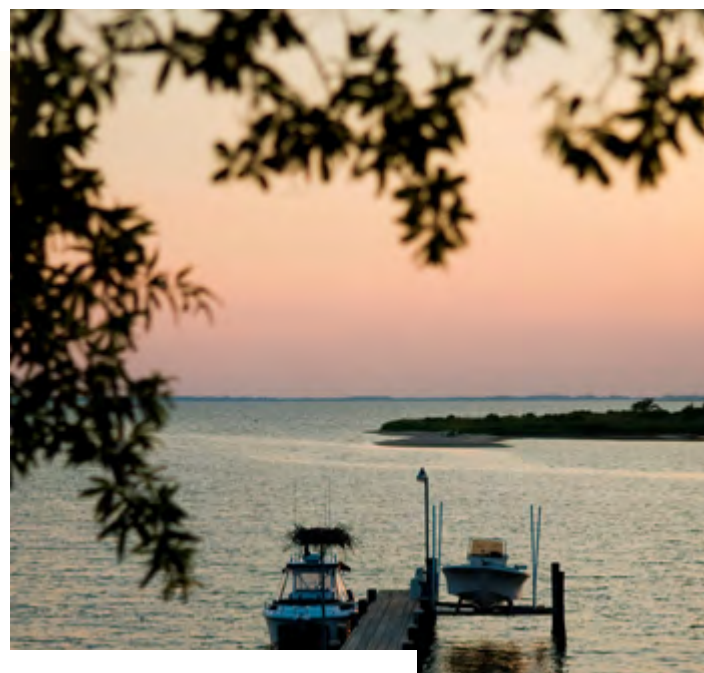




Head for Maryland

Ready to venture beyond our tri-state area? Then head for Maryland, our neighbor to the south. It's close enough for a day trip or easy weekend getaway with a full range of options—from ocean beaches to mountains. Our favorite spots are those clustered along the Chesapeake Bay, which bisects the state.

Located along the I-95 corridor, midway between Baltimore and Philadelphia and close to the southern Pennsylvania border, Cecil County is a quick and easy-access tourist destination. Beautiful scenery, outdoor attractions, vibrant small towns, waterfront recreation, plus shopping, history and authentic Chesapeake Bay-inspired cuisine attract plenty of visitors each year.



Outdoor Fun in Cecil County

With five rivers, the C&D Canal and Chesapeake Bay, Cecil County has 200 miles of shoreline to explore. Want to get out on the water? Book a tour boat ride, rent kayaks, stand-up paddleboards and pontoon boats, or charter a yacht—options for all tastes and budgets. At the end of the day, get a front row seat to sunsets bursting across the horizon at one of the many waterside eateries and tuck into fresh-caught Chesapeake blue crabs.

Outdoor enthusiasts can enjoy 100 miles of mixed-use trails for hiking, biking, bird watching and horseback riding at State and local parks. Outdoor activities also include paint ball attractions, foot golf, and making furry friends at Plumpton Park Zoo.



History, Farms, Towns

History lovers will want to visit Mt. Harmon Plantation & Nature Preserve, along the Chesapeake Country Scenic All American Road, located at “World’s End” in Earleville. Tour the manor house, hike the grounds, and enjoy beautiful scenic waterfront vistas.

Local farms in Cecil County offer homemade ice cream, U-pick adventures, farm markets and stands, hayrides, home-made cider doughnuts, trail rides and some make local beer and wine.

The canal-side historic town of Chesapeake City lets you see huge commercial ships from around the world pass through the C&D Canal and beneath the iconic bridge on their way to distant ports. This charming town features 1800s architecture, shops, inns and restaurants.

The town of North East offers specialty shops, antiques, award-winning restaurants, and for those with a sweet tooth, a candy shop and bakery. Other inviting small towns including Port Deposit along the banks of the Susquehanna and Elkton, the County seat with an arts district.

More at SeeCecil.org.



TIP:

Mark your calendar for the 2021 Cecil County Fair, July 23–31, at the Fair Hill Fairgrounds in Elkton, for its carnival midway, tractor pulls, demolition derby, rodeo, livestock shows, cow chip toss, pie eating contest, vendors, food, music and much more.

Eastern Shore & More

The Eastern Shore of the Chesapeake Bay is another must-see area of Maryland, and one of our favorite destinations is Kent County, just south of Cecil County. Bordered by the Sassafras and Chester Rivers, Kent County is bursting with waterfront views and boating fun along with historic buildings, military sites, art galleries and artisan markets.

In this prime sailing and boating territory—there’s even a tall ship in Chestertown—make sure to visit Rock Hall, a former fishing village turned tourist destination, and top stop for July 4th celebrations and the party on the Bay in August.



Eco-conscious Travel in Kent County

Outdoor adventures and sustainable eco-travel attract visitors to Kent County. Sustainable local cuisine—drawing from the bounty of the Bay—and environmentally friendly lodging pair well with sweeping water views and open parklands.

A crown jewel of the area, Eastern Neck National Wildlife Refuge offers 2300 acres of sanctuary for migratory birds, including bald eagles. See ospreys, ducks, songbirds, geese, shorebirds and more from the many observation platforms and trails. Two favorite trails with panoramic Bay views—Tidal Marsh Overlook and Bayview-Butterfly Trail—take you to waterfowl on a pond and a butterfly garden filled with painted lady butterflies.

For sustainable accommodations—from the BayShore Campgrounds, to the Farmstay B&B at Crow Vineyard, to the historic Thornton Estate, check KentCounty.com/Visitors.



Finally, in Annapolis

A final Maryland destination and top pick is the state capital and Sailing Capital of the U.S., Annapolis in Anne Arundel County, back on the western shore of the Chesapeake Bay. Called “a museum without walls,” the town boasts four centuries of architecture adapted to 21st-century living, where all roads lead to the water and a nautical heritage—the Naval Academy is here.

The historic district’s brick-lined streets are meant for wandering and browsing eclectic specialty stores. Tour Maryland’s State House or enjoy a concert at the City Dock. Cap your visit with a cruise of Annapolis Harbor for memorable water views of this distinctive town.

For more, VisitAnnapolis.org.





More Great Places for Outings

More Great Places for Outings

PENNSYLVANIA

See also: [Historic Sites](#)

Glen Mills

Newlin Grist Mill Park. Restored 18th-century milling community, with an active 1704 water-powered grist mill. Hiking, trout fishing weekends, picnicking and nature walks. *Rt. 1 & Cheymey Rd. NewlinGristMill.org.*

Glenmoore

Springton Manor Farm. The 19th-century manor house was the country estate of a prominent Philadelphia family and is now a demonstration farm where children meet animals in a petting area and learn about farming. *Park open year-round. 860 Springton Rd. ChesCo.org/CCParks.*

King of Prussia

Nor-View Farm Park. A real working farm with a plant nursery, mini-farm and ice cream shop. Visit the farm and see the animals from spring to fall, shop in the nursery and take advantage of the well water available for purchase. *670 N. Henderson Rd. Facebook.com/NorViewFarmGardenCenter.*

Newtown Square

Colonial Pennsylvania Plantation. Recreation of a 112-acre working 18th-century farm, with farmers and guides in period garb, Belgian horses, Red Devon milking cows, Dominique chickens and two very large pigs. They hold many events throughout the season, Apr.–Nov., weekends. *3900 N. Sandy Flash Dr., Newtown Square. ColonialPlantation.org.*

Nottingham

Herr Foods, Inc. Celebrating 75 years! *USA Today's* 2016 Readers' Choice #1 Best Factory Tour—beating Hershey's Chocolate World, at #4! Factory tours show the real operation, with real workers and include secrets like how tortilla chips get their flavor. Tours end at the Snack Bar and Gift Shop. Reservations required. *To schedule: 800-284-7488; or reserve tickets online: Herrs.com.*

Oxford

The Village of Oxford celebrates its 250-plus-year history in a charming historic district. Try the Bridge Tour Walking Tour to enjoy shopping and refreshments in town. The Annual Connective Art & Music Festival is cancelled for this year, but returning in 2022. For tours, coupons, guides and more, visit *DowntownOxfordPA.org.*

Perkiomenville

Goschenhoppen. One of the oldest continuously existing Pennsylvania German communities in America preserving the folk culture of this area's earliest immigrant settlers, known as the Pennsylvania Dutch. The Goschenhoppen Historians, Inc. maintain museums, a library and offer educational and seasonal events. *Goschenhoppen.org*

Pottstown

The Carousel at Pottstown. The second oldest

operating Philadelphia Toboggan Company wooden carousel in the United States. Each custom carved figure took local artists over 250 hours to sand, paint and finish. *30 West King St. CarouselAtPottstown.org.*

DELAWARE

New Castle

The town of **New Castle**, established in 1651 and where William Penn landed in 1682, is a beautifully preserved Colonial town center on the Delaware River. Visit **Immanuel Church** and its churchyard (dating back to 1703), and the **George Read II House**, a grand Federal mansion surrounded by a handsome garden. *NewCastleCity.Delaware.gov.*

Odessa

Historic Houses of Odessa. An outstanding collection of period household furnishings, fine and decorative arts. Five distinctive properties are unique examples of the architectural heritage of Colonial Delaware and tell of Odessa's role in the Underground Railroad. Be sure to visit in September for the 8th Annual Historic Odessa Brewfest with craft beer, live music, great food, vendors and more. Date TBD. *OdessaBrewfest.com, HistoricOdessa.org.*

Wilmington

Delaware Park Casino. Home to live thoroughbred racing on the track and slot machines and table games, live entertainment and dining choices for all tastes. There is even a world-class 18-hole championship golf course at the White Clay Creek Country Club. *777 Delaware Park Blvd. DelawarePark.com.*



Amusement Parks, Zoos & Family Fun

PENNSYLVANIA

Bird-In-Hand

US Hot Air Balloon Team. Choose a shared or private ride at your favorite location, select an available date and time that works best for you, then enjoy an experience of a lifetime. *2727 Old Philadelphia Pk. USHotAirBalloon.com.*

Chester Springs

Above & Beyond Ballooning. Take a scenic ride above Chester, Berks and Montgomery counties and celebrate with a post-flight champagne toast.

A memorable and unique experience for the whole family. *USAHotAir.com.*

Downingtown

Boulder Falls Miniature Golf. A 19-hole mini golf course featuring a cascading waterfall with winding streams flowing into fountain ponds. The beautifully landscaped design provides relaxation and lots of fun. *1426 Marshallton Thorndale Rd. BoulderFallsMiniGolf.com.*

Downingtown Rock Gym. This Rock Gym is for people of all ages and abilities. Beginners learn the basics and more experienced climbers test their skills in advanced climbing lessons or seek a new adventure on the outdoor rock-climbing area. Must have reservations. *462 Acorn Ln. DowningtownRockGym.com.*

Urban Air Trampoline & Adventure Park. From the obstacle course, balance beams, tubes, the runway tumble track and slam dunk zone and on and on. Great place on a rainy day or for a birthday party. *981 E. Lancaster Ave. Urban-Air-TrampolinePark.com.*

Exton

Round 1. There's fun for the entire family at this state-of-the-art entertainment arena. Mom and Dad can enjoy Happy Hour Specials of draft beers and wine while kids participate in activities like bowling and arcade games. *Exton Square Mall, 172 Exton Square Pkwy. Round-1USA.com.*

Glen Mills

Oasis Family Fun Center. Safe, clean fun for the entire family including a Ballocity Arena, Soft Playground, Rock Climbing Wall, Laser Maze, Jumpshot Trampoline Basketball and Arcade Games plus a full service snack bar. *35 Lacrue Ave. OasisFamilyFun.com.*

Sky Zone Trampoline Park. Literally bounce off the walls of this indoor trampoline park. Jump into the foam zone on the trampoline dodgeball court and slam dunk with hoops for kids of all sizes. *10 Conchester Rd. SkyZone.com/GlenMills.*

Lancaster

Dutch Wonderland. Fun for kids, with over 30 rides—two coasters, Duke's Lagoon water play area and live entertainment shows. Reservations required. *Rt. 30, 4 mi. east of Lancaster. Dutch-Wonderland.com.*

Malvern

Grand Slam USA. Keep the family active with over 30,000 square feet of athletic activities and sports for all ages plus unique attractions like Ninja Obstacle Course, Nerf Blaster Battle, Spaceball Trampoline and Human Foosball. *11 Lancaster Ave. GrandSlamMalvern.com.*

Mortonville

Brandywine Outfitters. Enjoy a scenic canoe or kayak trip with the whole family down the Brandywine River. If you're looking for a whole weekend of fun, grab your sleeping bag and pitch a tent on the 26-acre private park in the heart of Chester County. *2096 Strasburg Rd. CanoePA.net.*

Newtown Square

Jumpers Family Zone. Indoor playzone with Soft Playground, Safari Slide, Jungle Obstacles and Little Cub Play Area. Enjoy the fun any day of the week or host your next party—you can even create invitations on Jumper's website. Reservations required. *Ridley Creek Plaza, 5117 West Chester Pk. FunAtJumpers.com.*

Oaks

Arnold's Family Fun Center. An action-packed day riding go karts and other rides. Try both laser tag attractions, Black Light Mini Golf and bowling. Not only will the kids have fun, but parents can enjoy Arnold's Bistro & Bar while they play. *2200 West Dr. ArnoldsFFC.com.*

West Chester

Northbrook Canoe Company. Cool off along the beautiful Brandywine River with a self-guided canoe, kayak or tubing trip. Continue your fun with your favorite summer foods. Reservations Required. No walk-ins at this time. Open daily, May through Oct.; first trip at 9 am, last one at 4 pm. *NorthbrookCanoe.com.*

Treehouse World. A place to explore the newest and coolest treehouses around, to challenge yourself with their unique high adventure programs and a place to have a ton of fun. You can also take the Aerial Zipline Adventure Course. Reservations required. *1442 Phoenixville Pk. TreehouseWorld.com.*

West Chester Railroad. Take a relaxing

90-minute ride through the scenic countryside between West Chester and Glen Mills. Pack a lunch or purchase one from their on-board snack bar to enjoy during the stop at the Glen Mills train station picnic grove. The train can be chartered for special events and catering is available. Reservations required. *Market St. Station, 230 E. Market St., 610-430-2233; WestChesterRR.net.*

DELAWARE

Wilmington

Brandywine Zoo. Located along the Brandywine River in beautiful Brandywine Park, the zoo features animals from the tropical and temperate areas of North and South America, Asia and Africa. Their animals range from more common species to the highly endangered, and all enjoy natural settings and welcome your visit to the zoo. *1001 North Park Dr. BrandywineZoo.org.*



MARYLAND

Rising Sun

Plumpton Park Zoo. Home to over 180 animals, some taken in from owners who could no longer keep them. They give them their forever home providing expert veterinary care. From an African crested porcupine, to black backed jackals to a white Bengal tiger, zebras, American alligators and so many more. Plan a day at this zoo. *1416 Telegraph Rd., Rising Sun. PlumptonParkZoo.org.*



Selected Nature Centers, Parks and Public Gardens

PENNSYLVANIA

Audubon

John James Audubon Center at Mill Grove. The fieldstone mansion, now a museum, displays Audubon's major published works and memora-



The New SIGNATURE OF SENIOR LIVING

Now Open:
Arbor Terrace Exton is the new
signature of senior living in Exton, PA.

*A Personal Care and
Dementia Care Community*



ARBOR TERRACE®
exton

ArborTerraceExton.com | 484-310-7561



More Great Places for Outings

bilia. The 175 acres are a wildlife sanctuary with 175 species of birds and 400 species of plants. *1201 Pawlings Rd. JohnJamesAudubon.org.*

Chestnut Hill/Philadelphia

Morris Arboretum. The official arboretum of PA. On its 92 public acres, thousands of rare plants (many of Philadelphia's oldest, rarest, largest trees) are set in a Victorian garden. Award-winning rose garden, English landscape park, loggia and hidden grotto, Japanese gardens and swan pond. Special events. Advance tickets required. *100 E. Northwestern Ave. Morris-Arboretum.org.*

Coatesville

Hibernia County Park. The park consists of over 900 acres of trails, woodlands, meadows, open fields, play areas, pavilions, camping, picnic areas and popular fishing sites. *1 Park Rd. ChesCo.org/1743/Hibernia-Park.*

Devon

Jenkins Arboretum. A 46-acre arboretum that emphasizes azaleas, rhododendrons and plants of local woodlands, including groundcovers and colorful wildflowers that bloom over a long season. It's also a vibrant classroom for people of all ages. From seed propagation workshops to story time in the Children's Garden, yoga practice to beekeeping demonstrations, there is always something new to learn, create, or experience at Jenkins! *631 Berwyn Baptist Rd. JenkinsArboretum.org.*



Media

Tyler Arboretum. A 650-acre preserve originated with brothers Jacob and Minshall Painter. Mature plant collections are laid out in a natural setting, with 20 miles of marked trails. Education center, museum collections, library. *515 Painter Rd. Tyler-Arboretum.org.*



Newtown Square

Willistown Conservation Trust/Rushton Conservation Center. The Trust program's focus encompasses 28,000 acres in Chester County and portions of Delaware County, and its mission is

to preserve and manage the open land, rural character, scenic, recreational, historic, agricultural and natural resources of the area.

Rushton Farm is the centerpiece of the community farm, hosting a CSA, school groups, volunteer days and a "Share the Bounty" program that donates fresh food to local food cupboards. *925 Providence Rd. WCTrust.org.*



Willistown's Okehocking Preserve. 180 acres of the 500-acre Okehocking Land Grant Historic District are likely the only known grant to an Indian tribe authorized by William Penn, conveyed in 1703. Includes meadowlands, upland hillsides and old-growth woodlands, with 5 miles of hiking and horse riding trails. *5316 West Chester Pk. Willistown.Pa.us.*

Nottingham

Nottingham County Park. The 651-acre park offers nine pavilions, an 18-station fitness trail and three modern, handicapped accessible playgrounds. Dedicated in September 1963, Nottingham Park was the first Chester County park. *150 Park Rd. ChesCo.org/1743/Nottingham-Park.*

Phoenixville

Black Rock Sanctuary. Consisting of 119 acres of wetlands, woodlands and meadows, Black Rock Sanctuary is dedicated to wildlife habitat and public use. The sky over Black Rock is a flyway, or air highway, for birds that migrate up and down the East Coast. *953 Black Rock Rd. ChesCo.org/1745/Black-Rock-Sanctuary.*

Pottstown

Warwick County Park. Hardwood forests, meadows, wetlands and the French Creek are all jewels within Warwick Park's 535 acres. *191 County Park Rd. ChesCo.org/1743/Warwick-Park.*

Welkinweir. This historic country estate is home to Green Valleys Watershed Association,



a nonprofit dedicated to preserving the natural resources of northern Chester County. Nature walks and talks, summer camps and volunteer opportunities are offered on 219 permanently protected acres of forests, meadows and an arboretum overlooking multiple ponds. *1368 Prizer Rd. Welkinweir.org.*

Swarthmore

Scott Arboretum of Swarthmore College. "A garden of suggestions," it's the college campus, covering 110 diverse acres. *500 College Ave. Scott Arboretum.org.*

Wayne

Chanticleer. Chanticleer is one of the great gardens of the region. Once the Rosengarten estate, today Chanticleer is a colorful, contemporary garden within a historic setting. *786 Church Rd. ChanticleerGarden.org.*

West Chester

H. E. Myrick Conservation Center. A 300-acre landscape with vegetation and wildlife habitats. Part of the Brandywine Valley Assn., which has worked for over 50 years to protect the Brandywine Creek. Two marked self-guided nature trails—Hill and Stream Trail and Farm Path Trail. *1760 Unionville-Wauaset Rd. (Rt. 842). BrandywineRedClay.org.*

DELAWARE

Hockessin

Ashland Nature Center. Headquarters of the DE Nature Society, 130 acres of meadows, forests, marshes, streams and ponds make an ideal setting for nature programs each year, geared to all ages and all levels of interest. *Brackenville & Barley Mill Rds. DelawareNatureSociety.org.*



Mt. Cuba Center. A botanical garden that inspires an appreciation for native plants and a commitment to protect the habitats that sustain them. *3120 Barley Mill Rd. MtCubaCenter.org.*

Smyrna

Bombay Hook National Wildlife Refuge. This 16,000-acre refuge is one of the best places on the East Coast to view migrating and resident waterfowl, especially in spring and fall. *2591 Whitehall Neck Rd., Rt. 9, east of Smyrna. FWS.Gov/Refuge/Bombay_Hook.*

The Marian Coffin Gardens at Gibraltar. The grounds of an 1844 restored estate listed on the National Register of Historic Places. The gardens are "rooms," each with unique character. *1405 Greenhill Ave. PreservationDE.org.*

Nemours Mansion & Gardens. This is a 300-acre country estate with formal gardens and a

classical French mansion with 105 rooms on five floors. *850 Alapocas Dr. NemoursEstate.org.*

Historic Sites

PENNSYLVANIA

Birdsboro

Daniel Boone Homestead. Daniel Boone was born here in 1734 in a log house built between 1730–1779. Other buildings include a PA bank barn, blacksmith shop, sawmill, log house and visitors center. *400 Daniel Boone Rd. Daniel-BooneHomestead.org.*

Broomall

Thomas Massey House. One of the oldest English Quaker homes in PA, built in 1696. *Lawrence & Springhouse Rds. ThomasMasseyHouse.org.*

Chadds Ford

Barns-Brinton House. Blacksmith William Barns foresaw the need for a tavern on "ye Great Road to Nottingham." So, in 1714, he built the spacious brick building that was to become a tavern. **John Chads House.** Built around 1725, and owned by John Chads from 1729 until his death in 1760. He operated a ferry across Brandywine Creek. The location became known as Chad's ford. *1736 Creek Rd. ChaddsFordHistory.org.*

Chester Springs

The Mill at Anselma. On the Pickering Creek, the Mill is an extraordinary artifact of 250 years

of Chester County's industrial heritage retaining its original Colonial-era power train, and multiple layers of industrial equipment. Demonstrations and hands-on activities. *1730 Conestoga Rd. AnselmaMill.org.*

Historic Yellow Springs. Originally named by Native Americans for the iron-rich "yellow" spring water, this scenic village became the principal hospital for the Continental Army during the Valley Forge encampment and an 18th-century mineral water spa. Site of art, crafts and antique shows. *Art School & Pikeland Rds. YellowSprings.org.*



Ephrata

Ephrata Cloister. William Penn's colony of Pennsylvania was the first to offer freedom from religious persecution and Historic Ephrata Cloister is a wonderful example of this religious toleration. You'll experience a tranquility missing from

today's hectic lifestyle while you explore Ephrata's unique architecture, music and artwork. Don't miss the museum store featuring specialty crafts by nationally recognized artisans. *632 W. Main St. EphrataCloister.org.*



Geigertown

Joanna Furnace. Hay Creek Valley Historical Assn. supports local heritage and provides a living experience of Berks County's agricultural and technological past by demonstrating early American crafts and trades. The Hay Creek Festival, Sept. 10–12, features Early American crafts, antique toys, home crafts, children's hands-on activities, food and olde tyme music. *Rt. 10. HayCreek.org.*

Lancaster

Rock Ford Plantation. The 18th-C. Georgian-style home of Revolutionary War hero General Edward Hand. The estate includes the mansion, barn and Kauffman Museum of decorative arts. *881 Rockford Rd. RockFordPlantation.org.*

Historic Sugartown

Explore. Connect. Protect.

Experience the 19th-Century Village

Guided Tours

Book Bindery Workshops

Events & More

Your community. Your past.

HistoricSugartown.org

Tours: May - Nov | Sat 11 am & 1 pm | Advance Tickets Required
Park: 273 Boot Rd | Mail: P.O. Box 1423 | Malvern, PA 19355 | 610.640.2667

Your Home Away from Home

Ageless grandeur blended with modern convenience makes Graystone Mansion a unique venue for weddings.

From its circular drive, to its gorgeous grounds, to its hardwood moldings, Graystone Mansion is the perfect host for catered events of distinction.

THE NATIONAL IRON & STEEL HERITAGE MUSEUM

Graystone Mansion
In The Lukens Historic District
53 South First Avenue
Coatesville, PA 19320
610-384-9282
admin@steelmuseum.org



More Great Places for Outings

Wheatland, LancasterHistory.org. Wheatland, the James Buchanan House, is a Federal style house outside of Lancaster. It was formerly owned by the 15th President of the United States, James Buchanan. The house was constructed in 1828 by William Jenkins, a local lawyer. *1120 Marietta Ave. LancasterHistory.org.*

Malvern

Historic Sugartown. Historic Sugartown provides a window on rural 19th-century life, with several preserved buildings, including a circa 1880 General Store, a Carriage Museum featuring Chester County carriages and sleighs, Bank Barn and Book Bindery. Take a bookbinding or scarf marbling workshop or come for one of the Weekend Guided Tours. *Parking at 273 Boot Rd., Malvern. HistoricSugartown.org.*



Morrisville

Pennsbury Manor. William Penn's beautiful country plantation on the Delaware River, rebuilt to look as it did in 1700. Jacobean-style furnis-

ings include 17th-century antiques. *400 Pennsbury Memorial Rd. PennsburyManor.org.*

Paoli

Paoli Battlefield. On the night of September 20, 1777, British Troops attacked Anthony Wayne's Pennsylvanians at this spot. This was the 9th bloodiest battle of the Revolutionary War, that was also called the Paoli Massacre. Visit this spot where America's First Battle Cry of "Remember Paoli" was born and see the 2nd oldest revolutionary war monument in the United States. *PBPFInc.org.*



Pottstown

Pottsgrove Manor. Built in 1752, this is the historic home of John Potts, Colonial ironmaster and founder of Pottstown. Distinguished for its fine early Georgian architecture. *Rt. 100 & W.*

King St. MontCoPA.org/HistoricSites.

Schwenksville

Pennypacker Mills. A Colonial revival mansion, this home of PA Governor Samuel W. Pennypacker was preserved as a country gentleman's estate. *5 Haldeman Rd. MontCoPA.org/HistoricSites.*

Wayne

St. David's Episcopal Church. A stone wall encloses St. David's graveyard, memorialized in Longfellow's poem: "What an image of peace and rest is this little church among its graves..." This park-like setting is welcoming and serene, with an intimate stone church, a fine example of early Colonial architecture. *763 S. Valley Forge Rd. StDavidsChurch.org.*



Willow Street

Hans Herr House. Oldest house in Lancaster County and oldest Mennonite Meeting House in America, built in 1719. Explore the main

Be sure to check our monthly events column for events happening at these sites all year. Visit CountyLinesMagazine.com.

floor, the attic and cellar, plus farm museum and Colonial garden. *1849 Hans Herr Dr. HansHerr.org.*

Worcester

Peter Wentz Farmstead. Colonial farmhouse used by George Washington before and after the battle of Germantown, restored to its 1777 state. *Schultz Rd., off Rt. 73. MontCoPA.org/HistoricSites.*

Museums

PENNSYLVANIA

Chadds Ford

Brandywine River Museum of Art. See: "Day Trips & Outings."

Christian Sanderson Museum. The museum exhibits the eclectic collection of historical relics, artifacts, and memorabilia acquired by Christian Sanderson over a period of more than 75 years. *1755 Creek Rd. SandersonMuseum.org.*

Coatesville

Lukens National Historic District Museums. Holding Virtual Tours. Industrial history and architectural heritage are woven together so you can "Discover the Past, Explore the Future." Three mansions—**Rebecca Lukens House** (c. 1739); **Terracina** (1850-51) and **Graystone Mansion** (1889)—plus the **National Iron and Steel Heritage Museum** are the highlights when you visit. *50 S. First Ave. Coatesville. SteelMuseum.org.*



pre-Raphaelite art, Brandywine school illustrators & 9-acre sculpture garden. *2301 Kentmere Pkwy. DelArt.org*

The Delaware Contemporary. A non-collecting contemporary art museum and gathering place for exploring new ideas in art, design and technology. *200 S. Madison St. DEContemporary.org.*

Delaware Children's Museum. The big yellow building along the Riverfront focuses on science, math and technology and engages children in playful learning. *550 Justison St. Delaware-ChildrensMuseum.org.*

Delaware History Museum. (Temporarily closed—check website for reopening). Originally a Woolworth's Department Store (1940), the building has been transformed into the Delaware History Museum and the **Jane and Littleton Mitchell Center for African American Heritage.** *504 N. Market St. DEHistory.org.*

Delaware Museum of Natural History. Re-opening in 2022. *DELMNH.org*

Hagley Museum & Library. Outside areas only open. The former industrial site of the original black powder works of the DuPont Company, founded in 1802 and powered by the natural resources that surrounded it. Check website for events. *200 Hagley Creek Rd. Hagley.org.*

Rockwood Museum. Designed in 1851 by English architect George Williams, an outstanding example of Rural Gothic architecture and gardenesque landscape design. *610 Shipley Rd. Rockwood.org.*

Winterthur Museum & Gardens. See: "Day Trips & Outings."

Yorklyn

Marshall Steam Museum at Auburn Heights Preserve. Home to the world's largest collection of operating steam cars and a 1/8-size live steam railroad on the 250-acre grounds, which are part of the Delaware State Park system. Visit their website to find out about their special events such as, Evenings at the Museum and Steamin' Days. Open to the public for train and antique auto rides and private tours mid-March through December. *3000 Creek Rd. AuburnHeights.org.*

Special Interest Museums

PENNSYLVANIA

Boyertown

Boyertown Museum of Historic Vehicles. Featuring vehicles of all types: gasoline, electric and horse-drawn, including carriages, wagons and sleighs. You'll see "high wheelers" and "safety bicycles," vehicle builder's tools and local historic roadside architecture. *85 S. Walnut St. Boyertown-Museum.org.*

Columbia

The National Watch & Clock Museum. Featuring the treasures of time, from ancient timepieces to modern technologies, the museum captures the evolution of timekeeping over the centuries. Reservations only. *514 Poplar St. NAWCC.com.*

Lancaster

Landis Valley Museum. Whether you come for the animals, to learn about early Pennsylvania German life, or to stroll the grounds and get an up-close look at the largest collection of Pennsylvania German artifacts in the United States, there is something for everyone to enjoy. *2451 Kissel Hill Rd. LandisValleyMuseum.org.*

Hands-On House Children's Museum. Offer-ing interactive activities for kids and families, through self-directed exhibits and programming that stimulate curiosity and invite the joy of discovery for everyone. *721 Landis Valley Rd. Call for dates and hours. HandsonHouse.org.*

Malvern

The Wharton Esherick Museum. The home and studio of renowned artist and sculptor Wharton Esherick, who inspired the Studio furniture movement. The Wharton Esherick Museum is a National Historic Landmark for Architecture, housing 50 years of work. Tours by reservation only. The campus now includes the **Diamond Rock Schoolhouse**, a one-room octagonal schoolhouse built in 1818 that served as the first "free" school in the area. Reservations required. *1520 Horseshoe Trail. WhartonEsherickMuseum.org.*

Reading

Mid-Atlantic Air Museum. Story of aviation told by displays of restored classic and historic aircraft. *Rt. 183 N, Reading Reg. Airport. MAAM.org.*


Strasburg

The National Toy Train Museum. Railroad Museum of PA. Strasburg Rail Road. Visit *NTTMuseum.org; RRMuseumPA.org; Strasburg-Railroad.com*

West Chester

The American Helicopter Museum & Education Center. The museum has an active schedule of public educational programs, exhibitions, events, air shows, workshops and publications designed to teach the principles of flight, celebrate the pioneers of aviation and encourage and inspire future generations. Helicopter rides are offered through the summer, check website for information. *1220 American Blvd., AmericanHelicopterMuseum.org.*

The Antique Ice Tool Museum. Follow the "ice man" from the harvest of the first major winter freeze to the storage, transportation, delivery and consumption of the product that shaped the way of life in this country from 1803-1940. *1825 Sconelltown Rd., AntiqueIceToolMuseum.org. ♦*



Find out about the 9th bloodiest battle of the Revolutionary War and the 2nd oldest Revolutionary War Monument

Monthly Lecture Series | Paranormal Tours
Walking Tours | Heritage Night | Wreath Across America

RememberPaoli.org

[Paoli Battlefield Historical Park](https://www.facebook.com/PaoliBattlefieldHistoricalPark)

[@PaoliBattle](https://twitter.com/PaoliBattle)

info@pbpfinc.org

Wednesdays: 5PM–7PM
July 14 & 28
August 4 & 18

Hump day evenings just became more fun!

Sip & Stroll through the Zoo and enjoy an adult beverage from **Bellefonte Brewing** or **Liquid Alchemy Beverages**. Fun animal encounters and **activities for all ages!** Alcohol is available for purchase, must show valid ID. **Kona Ice** is also available for purchase for all ages. Social Distancing will be maintained and **masks are required** when not eating or drinking. Tickets are limited and it is a rain or shine event.

BRANDYWINE ZOO

Tickets: Non Member Adults \$10, Children \$7
Brandywine Zoo Member Adults \$5, Children \$3

Purchase tickets:
brandywinezoo.org/events/specialevents/

FREE PARKING

Go a little wild!

The Brandywine Zoo is managed by the Delaware Division of Parks and Recreation, with the support of the Delaware Zoological Society.

8TH ANNUAL
Cutest Pet Photo Contest!



Think your pet is the cutest of them all? Enter a photo of your pet's adorable mug and get in the running to win an **exciting prize!**

1. Like and follow us on Facebook @CountyLinesMagazine
2. Snap a picture of your pet (dog, cat, bird, turtle, bunny, ???)
3. Upload & post your best photo (**only one, and no professional photographers!**) on our wall with #CutestPetOfCountyLines OR send it to info@valleydel.com
4. Be sure to include your pet's name, age, breed and a brief description!

ENTRIES MUST BE RECEIVED BY
★ JULY 7, 2021! ★
#cutestpetofcountylines






Chester County
FoodBank
BEYOND HUNGER

ChesterCountyFoodBank.org/donate • 610-873-6000

2021 NEWCOMERS GUIDE



New to our area?
Or want to discover what's interesting
and helpful for local residents?
Then check out the businesses, services
and organizations in this handy guide.

----- **ARCHITECTS, BUILDERS, HOME IMPROVEMENT** -----

B&D BUILDERS IN PARADISE

BAndDBuilders.com 📍 See their ad on page 8

B&D Builders is a full-service custom builder with more than 20 years experience in bringing grand projects to life. Their team of skilled designers and craftsmen have brought creativity and attention to detail to hundreds of projects, including equestrian facilities, bank barns, event venues, luxury homes, commercial properties and more.



BQ BASEMENTS & CONCRETE AT MULTIPLE LOCATIONS

BQBasementSystems.com 📍 See their ad on page 66

Award-winning, family-owned business established in 1997 by Brian Quinn, BQ specializes in foundation waterproofing, concrete lifting and leveling, gutter installation, structural repair, mold control and egress installation. Their mission statement is to “wow” each customer every step of the way and to be the best in the industry.



KING CONSTRUCTION COMPANY LLC IN NEW HOLLAND

KingBarns.com 📍 See their ad on page 17

King Construction Company is a recognized leader in the quality design and craftsmanship for barns, arenas, garages and accessory structures. King Construction works with their clients in all aspects of the design process to provide an exceptional building experience.



PERIOD ARCHITECTURE LTD IN MALVERN & DOYLESTOWN

PeriodArchitectureLTD.com 📍 See their ad on page 65

Period Architecture is a custom architectural firm specializing in new homes, additions, renovations, barns and buildings with enduring designs tailored to each distinct client. Over their 10 years as a firm, their award-winning technique has created dynamic places that enrich modern lifestyles with timeless style.



PINEMAR IN ARDMORE

Pinemar.net 📍 See their ad on page 21

Pinemar is an award winning company of builders and crafts-people working together to create extraordinary and beautiful homes. They specialize in building one-of-a-kind custom homes, complex and large-scale renovations, and providing ongoing home and estate maintenance services for clients in Pennsylvania and Delaware.



RANIERI & KERNS ASSOCIATES LLC IN BRYN MAWR

RKABuilders.com 📍 See their ad on page 11

This is a multi-faceted residential and commercial construction company specializing in large additions, renovations and custom home building, accepting nothing less than perfection from themselves and their highly skilled craftsmen and subcontractors. They provide their clients with exceptional quality, precise project management and environmentally sensitive building practices at a competitive price, while taking customer service to the next level.



PETER ZIMMERMAN ARCHITECTS IN BERWYN

PZArchitects.com 📍 See their ad on page 22

Peter Zimmerman Architects is a full-service residential design firm. They have an extensive portfolio of award-winning projects and design houses to last for generations. Their team creates custom solutions to suit your needs and lifestyle, while also integrating with the surrounding environment. They take pride in their attention to detail and personalized approach for each project.



----- **FINANCE & INSURANCE** -----

KEY FINANCIAL, INC. IN WEST CHESTER

KeyFinancialInc.com 📍 See their ad on page 3

As a member of the West Chester community, Key Financial has been providing planning and wealth management for over 35 years. As one of the Top 100 Advisors in America, their award-winning team has helped thousands of people raise their families, live the lives they planned for and retire in comfort—with better peace of mind.



UNRUH INSURANCE AGENCY, INC. IN EAST EARL & DENVER

UnruhInsurance.com 📍 See their ad on page 71

Unruh is a local insurance agency that's been serving southeast Pennsylvania since 1977. Their purpose is to provide unbeatable insurance rates while offering full support to clients when filing a claim. They offer policies covering auto, life and homeowner's insurance, as well as commercial liability insurance and more.



----- **HEALTHCARE** -----

CHESTER COUNTY HOSPITAL IN WEST CHESTER

ChesterCountyHospital.org 📍 See their ad on page 9

Chester County Hospital's expansion is 250,000 square feet of the most innovative environment for treatment and recovery in the county. It features the comprehensive Penn Heart and Vascular Center, 15 new, state-of-the-art operating suites, an innovative orthopedics pod, breakthrough therapies at the Abramson Cancer Center, and so much more. All provided with the compassionate care you can always count on from Chester County Hospital.



PINNACLE ENT ASSOCIATES AT MULTIPLE LOCATIONS

PentaDocs.com 📍 See their ad on page 2

Pinnacle ENT Associates provides comprehensive ENT, allergy and audiology care to patients of all ages. Their team believes in high-quality, patient-focused care that meets the unique needs of each individual. You don't have to travel far for superior care! They have 13 locations across southeast Pennsylvania.



SV DENTAL IN PAOLI

610-296-7797; SVDental.com 📍 See their ad on page 18

Dr. Theresa Smith and husband Dr. Carlos Vila are dedicated dentists serving families in the Paoli area for over 25 years. Skilled providers of general and cosmetic dental care, they specialize in implants, Invisalign and cosmetic veneers. Their patients are all ages, experiencing dentistry with personal, compassionate and affordable care.



HOME FURNISHINGS, DESIGN & DECOR

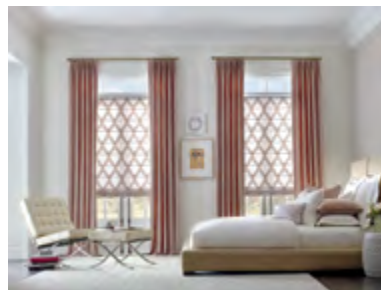
ADORN GOODS IN CENTREVILLE, DE
AdornGoods.com See their ad on page 71

A shopping experience focused on blending the old with the new, antique with contemporary, mixing beauty and community. You'll find a mix of tableware, gifts, home accessories, gourmet items and featured artists and artisans. Adorn Goods is what a general store used to be, only better—staying local and living well.



BOYLE'S FLOOR & WINDOW DESIGNS IN WEST CHESTER
BoylesFlooring.com See their ad on page 66

If you're looking for carpet, hardwood and refinishing, tile, luxury vinyl or window treatments, be sure to call Boyle's, "Where Personal Service Makes the Difference." They offer free in-home design consultation with showrooms in West Chester and Broomall. Financing is available.



HERITAGE DESIGN INTERIORS, INC. IN NEW HOLLAND
HeritageDesignInteriors.com See their ad on page 22

Specializing in window treatments, home decor and design, Heritage Design Interiors will turn your new house into your home. They will take care of all of the details from measuring to installing your new window treatments—blinds, shades, shutters, sheers, panels and valances. Stop by their retail home decor boutique.



JOHNNY JANOSIK IN WILMINGTON & CHRISTIANA, DE
JohnnyJanosik.com See their ad on page 5

Johnny Janosik currently operates four Gallery Showrooms, a dedicated Outdoor Furniture Store, and two Outlet Clearance Centers, all in tax-free Delaware. All of their stores bring you the best selection of brand name furniture and mattresses at the guaranteed lowest prices.



KIM MORGAN DESIGNS IN PHOENIXVILLE
KMD.DecoratingDen.com See their ad on page 71

Kim Morgan Designs carries thousands of top quality home furnishing products, specializing in window treatments, furniture, accessories and more. They will create the room of your dreams, while reflecting your design style, budget and lifestyle. Call for your complimentary consultation.



SUGARBRIDGE KITCHEN & BATH DESIGN IN PAOLI
Sugarbridge.com See their ad on back cover

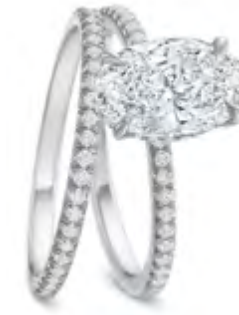
A full scale design firm, specializing in kitchens and interior architectural details. Their designers help to navigate through the many steps of a major home renovation or new construction project. They reconsider floor plans to offer the best working space and offer quality material selections including cabinetry, countertops, tile and more. Call to schedule an appointment.



JEWELERS

WALTER J. COOK JEWELER IN PAOLI
WalterJCookJeweler.com See their ad on page 12

Walter J. Cook Jeweler is celebrating its 75th anniversary this year! They welcome you, as a new member of the community to visit them. Their inviting showroom offers both classic jewelry designs while introducing new and unique one-of-a-kind collections. Voted Best Jeweler Of the Main Line once again, their personalized customer service includes expert repairs, restyling and custom jewelry designs.



OUTDOOR DESIGN & GARDEN CENTERS

MOSTARDI NURSERY IN NEWTOWN SQUARE
Mostardi.com See their ad on page 74

Since 1976, Mostardi Nursery has been a family-owned business convenient to the Main Line and western Philadelphia suburbs. They are your local resource for all kinds of outdoor and indoor plants, along with the expertise to help you be successful with your home gardening and landscaping projects. Their friendly service goes above and beyond your expectations.



PETS

APPLEBROOK INN VETERINARY CENTER & PET RESORT IN WEST CHESTER
ApplebrookInn.com See their ad on page 65

Applebrook Inn Veterinary Center and Pet Resort offers general medical appointments, complete diagnostics and surgical services at their state of the art veterinary facility. They offer boarding, grooming, daycare and training 7 days a week on almost 10 acres conveniently located near West Chester, Downingtown, Coatesville and Kennett Square.



REALTORS

KIT ANSTEY REAL ESTATE TEAM IN WEST CHESTER
AnsteyTeam.com See their ad on page 75

Kit is the team leader of a nationally recognized Real Estate Team specializing in West Chester and surrounding communities. Kit and his team are recipients of numerous awards including Daily Local News Readers Choice 2020 Best of Chester County in Real Estate as well as many other awards.



THE HOLLY GROSS GROUP IN WEST CHESTER
HollyGrossGroup.com See their ad on page 4

The Holly Gross Group, under the guidance of Stewart, Stephen and Holly Gross, is ranked in the top 10 Realtors in Chester County. They represent sellers and buyers of all types and sizes of homes and properties, including condominiums, townhomes, single family homes, large estates, farms, raw land and rental properties. They look forward to working with you.



RESTAURANTS

RON'S ORIGINAL BAR & GRILLE IN EXTON
RonsOriginal.com See their ad on page 72

Eat Clean. Live Well. Feel Good. Ron's takes pride in serving good food, that's good for you, made with only the freshest and cleanest ingredients possible. From non-GMO and Hormone/Antibiotic Free ingredients to specialty diets such as gluten-free and vegan, Ron's has something for everyone.



SCHOOLS

DELAWARE VALLEY FRIENDS SCHOOL IN PAOLI
DVFriends.org 📍 See their ad on page 71

DVFriends serves bright students in Grades 1–12 with learning differences in reading (dyslexia), writing (dysgraphia), math (dyscalculia), memory (long-term and working), processing speed, ADHD and executive functioning challenges. Their Quaker community recognizes and honors the inherent worth of all people. DV teachers guide students to embrace the courage to try, establish the confidence to reach farther, and build resilience to succeed in school and beyond.



WESTTOWN SCHOOL IN WEST CHESTER
Westtown.edu 📍 See their ad on page 70

Westtown School, a Quaker, private, co-ed Pre-K–12 day school with boarding options in grades 9–12, offers a challenging curriculum that emphasizes critical thinking, collaboration and creativity combined with an exceptional level of attention. Westtown fosters a culture of reflection and self-discovery in which students can ignite the unique spark that illuminates their passion and purpose.



THE WYNDCROFT SCHOOL IN POTTSTOWN
Wyndcroft.org 📍 See their ad on page 6

The Wyndcroft School engages students who love learning and families that value education. With an updated approach to a classic curriculum, Wyndcroft's faculty guides students through an academic program that provides a firm foundation and cultivates a sense of gratitude and responsibility. Beginning in preschool, students develop leadership skills, so that from middle school they emerge confident, poised, and prepared to succeed at the best secondary schools and beyond.



SENIOR LIVING

HARRISON HILL APARTMENTS IN WEST CHESTER
HarrisonHillApts.com 📍 See their ad on page 67

Harrison Hill's 5 stories offer 114 apartment homes comprised of one bedrooms and one bedrooms with dens. Residents enjoy the company of others at "Monday Mingle," holiday festivities, chili fests, ice cream socials, games and more. Harrison Hill also offers once-a-week free transportation to set destinations.



SAGE LIFE AT MULTIPLE LOCATIONS
SageLife.com 📍 See their ad on page 14

Sage Life communities have the flexibility to customize their services. Their mission is to create the best home for each member of the Sage Life family by encouraging, empowering and celebrating successful aging. Visit them at Echo Lake in Malvern, Daylesford Crossing in Paoli, Plush Mills in Wallingford and Kyffin Grove in North Wales.



TRAVEL

KENT COUNTY LODGING
KentCounty.com/Lodging 📍 See their ad on page 7

The charming Inns and B&Bs of Kent County, MD offer a wide variety of "Staycation" experiences from romantic Brampton Inn to the waterfront beauty of Great Oak Manor or Inn at Huntingfield Creek, and Crow Vineyard Winery for wine sipping or a farm-stay. Be sure to visit all the listed County Inn websites to learn more.



APPLEBROOK INN
 Veterinary Center & Pet Resort

1691 W. Strasburg Rd | West Chester, PA 19382 | 610-692-7178 | applebrookinn.com

PERIOD ARCHITECTURE
 — DESIGNING BEAUTIFUL PLACES —
 www.periodarchitectureltd.com

**Now that's a
STRONG
Gutter!**

**Gutter
Shutter™**

The **best gutter system**
in the world!

Strongest gutter bracket in the world!
Extra large 6" gutter size carries 20% more water than standard 5" gutters.
Hood keeps leaves and debris out!
20 year paint warranty. Factory applied - oven cured.
LASER STRAIGHT Heavy, .032 Aluminum is thicker than regular gutters to prevent sagging and distortion.

**BQ Basements
& Concrete** Since 1997

Snag Free, Clog Free,
& Seamless

FREE ESTIMATES
215-720-1857
BQBasementSystems.com

**WATERPROOFING THE DELAWARE VALLEY
FOR 25 YEARS**

BEFORE **AFTER**

Sump Pumps • Mold Control
Crawl Space Repair • Foundation Repair
Egress Windows & Doors • Dehumidification

**SUMMER SPECIAL
\$500 OFF***
Waterproofing Project

WE ALSO FIX SINKING CONCRETE

BEFORE **AFTER**

Lifetime Transferable Warranties

Concrete Patios • Pool Decks
Sinking Steps and Walkways

**SUMMER SPECIAL
\$200 OFF***
Concrete Project

**BQ Basement
Systems**
The Basement, Crawl Space, Foundation Repair
& Concrete Specialists

215-720-1857
BQBasementSystems.com

*Expires 7/31/21. May not be combined with any other offer and must be presented at time of estimate.

**H H H
HARRISON HILL**
55+ RENTAL COMMUNITY

**CHESTER COUNTY'S
AFFORDABLE, LUXURY
RENTAL COMMUNITY
FOR ADULTS OVER 55**

- Open Floor Plans for 1BR Apts & 1BRs with Dens
- Kitchens w/ Granite & Cherry Cabinets
- Washer Dryer in Every Unit; Fitness Center; Media Room
- Peace of Mind, Secure, Cost Effective, Independent Senior Living
- Social Community of Residents

1015 Andrew Drive
West Chester, PA 19380
610.430.6900
Mon-Fri 10AM-4PM
Sat & Sun 10AM-4PM
www.HarrisonHillApts.com

*Celebrating
70 Years*

Boyle's
Floor & Window Designs

Showrooms in West Chester & Broomall
610-429-9773
boylesflooring.com

- Elegant Custom Kitchens, Bathrooms & Built-ins
- Exquisite Designs
- Exceptional Service & Installations

**The Art
of KITCHEN DESIGN**

MADSEN
KITCHENS & BATHROOMS

2901 Springfield Road, Broomall ■ 610-356-4800
www.MadsenKitchensAndBathrooms.com
Showroom: Mon.-Fri. 9 to 5 pm • Sat. 9 to 3 pm
Evening hours by appointment only

*Candlelight
Cabinetry*

PA 17217 

Sports UPDATE

YOUNG ATHLETES CHOOSE THEIR COLLEGES DURING A CHALLENGING SEASON

Edwin Malet

IN WRESTLING, LACROSSE, BASEBALL, GOLF AND track, the independent schools of *County Lines* country, both in Pennsylvania and Delaware, had some tremendous successes this past spring. Many of their athletes have been recruited by top colleges around the country.

Malvern Prep, in particular, enjoyed success across virtually all their spring sports. Friend's Central and Tatnall Schools also completed seasons with undefeated records, while Agnes Irwin School and Bishop Shanahan High School finished first in their leagues. Plus, track stars from several area schools set records in their events.

Here are some highlights.

PENNSYLVANIA

MALVERN PREP

In wrestling, lacrosse, baseball and track, the Friars were outstanding. In wrestling, the team finished first overall at the National Prep All-American competition in May.

Malvern Prep's lacrosse team had an overall record of 19–2, and its players landed at great colleges. Jake Brownley heads to Harvard, Nick Potemski to Duke, Cooper Frankenheimer to North Carolina at Chapel Hill, Eric Spanos to University of Maryland, Pup Buono



Malvern Prep

and Will Peden to Penn State, Matthew Caccese to Boston University and Matthew Ford to Catholic University.

Ranked 12th in Pennsylvania and finishing 24–4 overall, the school's baseball team was also superb. Lonnie White has committed to Penn State, but may be drafted directly by Major League Baseball. Cam Conley is heading to Pepperdine. Four of the pitchers—Fran Oschell, Connor Street, Dominick Chieffallo, and Mason Smith—are committed to Duke, High Point University, University of Scranton and Ithaca College. And Josh Smith, called the “heart and soul of our team and an absolute nightmare for opposing teams,” will try to walk on at Penn State next year.

The school's track team also did well. At the Inter-Ac Championship, junior D'Angelo Stocker took first place in the 100- and 200-meter dashes. Senior Ryan Rosenberger won the 110-meter hurdles and the long jump and is headed to Boston University.



Friend's Central School

FRIEND'S CENTRAL SCHOOL

Clinching the league championship, the Friend's Central baseball team had 25 wins, the most in the school's history. Three of its players have committed to play in college: Justin Rubin, who set single season records for hits, runs and steals, committed to University of

Virginia. Senior Jack Donahoe is headed to Misericordia University, while junior Sammy Burman has committed to Hofstra.

The girls' track team won their fifth championship in the Friends League. Micah Trusty, Miracle Price and Inara Shell all set meet records. On the boys' side, Ryan Ellison set a record in the hurdles.

BISHOP SHANAHAN HIGH SCHOOL

The Eagles' girls' lacrosse team won the Chesmont League title for first time. Olivia Murphy has committed to Temple, Darby Whalen to the Naval Academy, Michelle Warren to Rutgers, and Lila Ceribelli to Elon. Among juniors, Paris Masaracchia, Elle Udo, Sophia Lymberis, Greta Wolf, Lauren Young and McKenna Billie, have respectively committed to Virginia Tech, Brown, Cincinnati, Niagara, Cabrini and Millersville University.

AGNES IRWIN SCHOOL

With a 16–4 season and winning the Inter-Ac title, the Owls' lacrosse team was brilliant. Two of its seniors have chosen their colleges: Bryn Ammerman to Ohio State and Paige Crowther to Oregon. Among the juniors, six made college commitments: Colby Macaione and Cate Parsells, both to Georgetown, Carly and Sydney Wilson to University of Florida, Jordan Healy to Dartmouth and Marisa White to North Carolina at Chapel Hill.



Episcopal Academy Boys Lacrosse team

EPISCOPAL ACADEMY

The Churchmen boys' lacrosse team had a 12–7 record overall. Billy Adams, Will Delaney, Reilly Dugan, Dom Piselli and Michael Zahralldin are headed, respectively, to Army, Hofstra, Villanova, Stevens, and Washington & Lee. Juniors Andrew McMeekin, Matt McCarthy and Tristan Whitaker will go to Princeton, Penn and Vermont.

The school's girls' lacrosse team finished 9–8 overall. Co-captains Madison Vetterlein will play for Boston University next year, while Sarah Groark will attend Wisconsin. The team voted Sarah MVP and the “greatest inspiration in playing the game of lacrosse.”

In track, Bryce Cooper, who also plays wide receiver on the football team, won the 400-meter sprint at the Inter-Ac league championship. And Jeo Daniel finished first in the 300-meter hurdles.

HAVERFORD SCHOOL

For the season, the Fords had a 12–6 record in lacrosse. Geordy Holmes is headed to Maryland, Colby Kim to Boston University, Michael Bozzi to Cornell, Trevor Pettibone to Colby and Nolan Cooleen to Williams. Max Emery-Baum and Ben Trucksess will play for Dickinson.

In baseball, Eric Genther has signed at Rhode Island, Grayson Walker committed to Dickinson, and Jacob Stacey will go to Bard College. Jonny Flieder will attend Haverford College down the road.



Episcopal Academy Girls Lacrosse team

In track and field, Curtis Weh is headed for Cornell after a long jump of nearly 23 feet. AJ Sanford, having run 1:58 in the 800-meters, will go to Lafayette College.

WESTTOWN SCHOOL

Four of the Moose were recruited from Westtown lacrosse. Oneniotekowa Maracle, Michael Tayloe, Charlie Herlocher and Hakim Hicks will go to Lafayette, Long Island, Rhodes and Johns Hopkins, respectively.

CHURCH FARM

Jason Lavoe took first place in the 200-meter dash at the Bicentennial Athletic League Championships. He finished first on



Haverford School



Tatnall School

the same day in the 100-meters and long jump. The previous day, he anchored the team's first place finish in the 4x100-meter relay.

DELAWARE

TATNALL SCHOOL

The girls' lacrosse team had a perfect 18-0 record, until the state tournament, when the Hornets went down in the final round. In all, five girls have committed to colleges: goalie Carlie McKenry is going to Centre College, Ellie Hiller to Colorado, Sophia Mitchell to Tennessee, Larsen Korengel to Charleston, and Ashley Marvel is headed to West Chester University.

The school was also first in co-ed golf for the state of Delaware from the beginning of the season until the end, finishing the regular season 16-0.

In track, senior Nicholas Pizarro and junior Declan McDonnell finished first and second in both the 1600- and 3200-meter races at the Delaware's Division II championships.

ARCHMERE ACADEMY

The Auks made it to the state tournament in baseball with 13-2 record, but lost in the first round. Erik Risnychok has committed to Washington College in Maryland.

TOWER HILL

The Hillers girls' lacrosse team had a season record of 11-5 overall. Annie Malatesta was selected to the First Team All-Conference and is going to Franklin and Marshall College.

In golf, the school had four seniors on its varsity team. Rylie Heflin is ranked #1 for Delaware and plans to play at Duke. Team captain Olivia Schwandt will attend Texas, John Koenig is going to Virginia Tech and Nick Lenhard is headed to Richmond.

Avery McCrery is only an 8th grader but plays at #2 on the team and is 7th in DIAA high school ranking. Coach Kathy Franklin joked, Avery's "not allowed to go do something silly like quit school to join the LPGA tour!" ♦

ADORN GOODS

To order
CUSTOM DOORS
call or email
info@adorngoods
(302) 575 9657

Beautiful, locally made, custom hardwood screen doors!
Choose from 3 styles. Interchangeable glass inserts available.

for all your perfect gifts and fine food

5712 KENNETT PIKE CENTREVILLE, DE (302) 575 9657

LOWER SCHOOL
GRADES 1-5
Building the foundation for lifelong learning

MIDDLE SCHOOL
GRADES 6-8
Discovering the joy of learning at a key transition point

UPPER SCHOOL
GRADES 9-12
Preparing for success in school and beyond

BUILDING CONFIDENCE EVERY DAY
In academics and beyond

One of the nation's best schools for bright students who learn differently, DVFriends provides innovative education rooted in our purposeful Quaker culture, authentic partnerships that support each student's success, and a welcoming and inclusive community.
Learn more: dvfriends.org

DVFriends
GRADES 1-12

Delaware Valley Friends School
19 E. Central Avenue | Paoli, PA | 610.640.4150

Westtown School could be the difference between your child growing up to be changed by the world and your child being a force for change in the world.

**In-Person Tours
Summer & Fall 2021**

WESTTOWN SCHOOL
Independent, Quaker,
Co-Ed, Pre-K - 12 School

KIM MORGAN DESIGNS
DECORATING DEN INTERIORS®

It's Time To Start Entertaining Again!
We pride ourselves on working collaboratively with our clients to create the perfect space reflecting your design tastes, budget and lifestyle.

Call for your complimentary consultation and start welcoming friends and family back home.
(610) 412-5412
kmd.decoratingden.com

Kim Morgan
Owner & Designer

✓ Better home insurance
for the **LOVE**
of all that is **COZY**

Unruh
INSURANCE AGENCY INC

Main Street, Denver & East Earl*
*Next to Shady Maple Smorgasbord

877-854-3309 | unruhinsurance.com

RON'S
ORIGINAL BAR & GRILLE
EST. 1990

scratch made.
organic choices.
gluten free
options.
hormone and
antibiotic free
meats.



EAT CLEAN
FEEL GOOD. LIVE WELL.

610.594.9900
www.ronsoriginal.com
74 E Uwchlan Ave | Exton, PA

IMAGINE...
a Co-op grocery store in
downtown West Chester

A community-owned grocery store in downtown West Chester is in the works. And you can own a part of it! Visit our site to learn more about co-ops and how a store with healthy, local food values can refresh the landscape.

westchester.coop



Buy your groceries now!
At the Co-op's online market, you'll find pantry staples, dinner ideas, artisan goods, and more, all sourced as locally as possible. Learn more at **westchester.coop/go-box**.

West Chester COOPERATIVE
a community-owned grocery



AEDirect



Great Food. Local Businesses. Delivered Directly to You!

Visit AEDirect.shop to Order

Use coupon code **CLMAG10** when you order to receive 10% off your order!

Welcome Neighbor!

Learn how Welcome Neighbor's unique personal promotion service connects local businesses & new residents.

The thoughtfulness and caring of many fine local businesses and professionals make our visits to newcomers possible. We have room in our Welcome Basket for a few more sponsors. Find out more at: **WelcomeNeighborPA.com** Or call Anne at: **610.742.9341**

Install the Welcome Neighbor app at your app store or with the QR code to see how users can easily contact you.




Google play
Available on the App Store

[Food News] *A few of our favorite things to share this month about local food and drink*

Royal Desserts. Beat the heat with a sweet treat from Paoli's newest ice cream shop, **The Queen's Table**. Local mother-daughter duo Meridith Coyle (Aneu) and Alexandra McLoughlin created this hybrid ice cream shop to satisfy cravings while showcasing women entrepreneurs and artists. Dig into Smokin'



Hot Sundaes and Sweet Sliders made with artisanal ice cream and freshly baked cookies and brownies. After your dessert fix, check out home décor items and local art on display. 1542 E. Lancaster Ave., Paoli. [Facebook.com/TheQueensTable](#).

Hotdog Holidays. Fire up your grill and celebrate **National Hot Dog Month** and **National Hot Dog Day** on July 21st. Gather friends and family for a weekend BBQ complete with your own hotdog buffet. Sample different versions, like a Chicago Dog with dill pickles, sweet relish, tomatoes and yellow mustard or Hawaiian Dog with grilled pineapple, BBQ sauce and diced shallots. Or keep it simple with a classic dog topped with mustard or ketchup. [NationalToday.com](#).



Filet Please. Lunchtime just got a whole lot better! **Nick Filet**, the Paoli-based franchise, is expanding to a new location in West Chester (plus 11 more across the country). Savor their signature filet mignon sandwiches, like the Nickadelphia smothered in provolone cheese, onions and horseradish sauce, the Nicky Hollywood topped with pineapple, BBQ sauce and jalapenos, or The Phil with blue cheese crumbles and Nick Filet sauce. Check out social media for updates on new locations. [NickFilet.com](#).

Destination Dining. Get a taste of the Mediterranean at **The Naked Olive** in Kennett Square, serving up traditional dishes in their Mediterranean-garden-inspired space. Entrees include grilled whole branzino basted with herbs, olive oil and



lemon, roast rack of lamb with an apricot-herb mustard glaze and, of course, a Kennett classic—creamy mushroom risotto. Save room for desserts like their blood orange crème brûlée and baklava and ice cream. 759 W. Cypress St., Kennett Square. [TheNakedOlivePA.com](#).

Summer Sipping. Nothing screams summer Happy Hour like sipping a fizzy alcoholic seltzer. But before you reach for one of those national brands, consider supporting local with **Iron Hill's** new venture, **Rivet Hard Seltzer**. These beer alternatives are light, crisp and refreshing with just the right blend of fruity flavor. Stop by your nearest location to taste their three flavors, POG (passion fruit, orange, guava), Black Cherry and Blueberry Açai. Then pick up a 6-pack to take home. [IronHill.com](#).



Index to Advertisers

Look for *County Lines* at Wegmans, Main Point Books, at Events and Affiliates.
Check our website's Get A Copy page.

Adorn Goods.....	71	Fine Wine & Good Spirits	74
Applebrook Inn Veterinary Center & Pet Resort	65	Harrison Hill Apartments.....	67
Arbor Terrace Exton	53	Henrietta Heisler Interiors, Inc....	19
Artisan Exchange.....	72	Heritage Design Interiors, Inc	22
B & D Builders.....	8	Historic Sugartown.....	55
BQ Basement Systems, Inc.	66	Johnny Janosik Furniture & Mattresses	5
Berkshire Hathaway Fox Roach / K. Anstey	75	Kent County Lodging	7
Berkshire Hathaway Fox Roach / Holly Gross Group	4	Kesher Israel Congregation	20
Boyles Floor & Window Designs	66	Key Financial, Inc.....	3
Brandywine Zoo.....	56	Kim Morgan Designs	71
Chester County Day.....	9	King Construction.....	17
Chester County Food Bank.....	58	Madsen Kitchens & Bathrooms ..	67
Chester County Hospital / Penn Medicine.....	9	Mostardi Nursery	74
Delaware Valley Friends School ...	71	National Iron & Steel Museum...	55
		Paoli Battlefield	56
		Period Architecture, Ltd.....	65
		Peter Zimmerman Architects	22
		Pinemar, Inc. Builders	21

County Lines is available at the following
advertisers. See our Advertiser Directory on
CountyLinesMagazine.com.

Pinnacle ENT Associates, LLC	2
Ranieri and Kerns Assoc. Builders	11
Ron's Original Bar & Grille	72
SV Dental	18
Sage Life	14
Sugarbridge Kitchens & Baths	back cover
Unruh Insurance Agency, Inc.....	71
Walter J. Cook Jeweler	12
Welcome Neighbor	72
West Chester Cooperative.....	72
Westtown School.....	70
The Wyndcroft School	6

*This Index is provided as an additional service
to our advertisers. County Lines takes no
responsibility for errors.*

How to Achieve a Gold Medal Garden...

Start with High Performance Plants from Mostardi!

We stock flowers, shrubs and trees
that are recommended by the
Pennsylvania Horticultural Society's
"Gold Medal Award" program.

- Gorgeous Colors
- Exceptional Values
- High Quality
- Superior Performance

Expect the best from Mostardi plants.
They are good as gold!



MOSTARDI
NURSERY

4033 West Chester Pike (Rte.3)
Newtown Square, PA 19073
610-356-8035 • www.mostardi.com



Choose your
favorites from more
than 10,000 exceptional
wines and spirits. Simply visit
your local Fine Wine & Good
Spirits Premium Collection
store or shop online at
FineWineAndGoodSpirits.com.

**FINE WINE &
GOOD SPIRITS**

The Kit AnsteyReal Estate Team



Kit Anstey
Associate Broker
610.836.2348
Kit@AnsteyTeam.com



**BERKSHIRE
HATHAWAY**
HomeServices

**Fox & Roach,
REALTORS®**



*Kit Anstey
Real Estate Team*



Debbie West
Associate Broker
610.563.3861
Debbie@AnsteyTeam.com



Cleo Elkinton
REALTOR
610.529.0227
Cleo@AnsteyTeam.com



Erinn Hazley
REALTOR
610.842.8039
Erinn@AnsteyTeam.com



Brian Nelson
REALTOR
610.513.1765
Brian@AnsteyTeam.com



Brynn Kennedy
REALTOR
484.620.1025
Brynn@AnsteyTeam.com



Anita Robbins
REALTOR
610.324.8746
Anita.Robbins@foxroach.com

**It is the best time ever to be a Seller. You will
receive top price with the most desirable
terms. Contact us for a free up to date
Market Analysis.**

**Dedicated to and specializing in
residential real estate, new
construction, resales, condominiums,
and both short and long-term leasing.**

FEATURED PROPERTIES



1513 Links Drive | West Chester

\$774,000

Impressive carriage home located directly on the
West Chester Golf and Country Club, carefree
lifestyle, 4 bedrooms 3 full baths 2 half baths, elevator
to all floors, 2 car attached garage and many
exceptional improvements.



1004 Brick House Farm Lane | Newtown Square

\$2,495,000

Custom built for Cole and Heidi Hamels
Spectacular 6 Bedrooms 7 full Baths & 3 half Baths
residence with in ground heated pool & spa.
Available for Immediate Settlement.

Follow us  

610.430.3000 Kit@AnsteyTeam.com 610.431.1100 www.AnsteyTeam.com