

Love your Kitchen!



Photography by Letitia Clark

Kitchen Renovation
Historical 1800's Chester County Home

Sugarbridge
Custom Kitchens & Baths

Visit us on our website: www.Sugarbridge.com

VAN CLEVE PAVILION
1604 E. LANCASTER AVENUE • PAOLI, PA • 19301 • 484-318-8367

OCTOBER 2019 \$3.95

COUNTY LINES

Your guide to unique places, interesting events, fine dining, great shopping
and the special lifestyle of Southeastern Pennsylvania and Northern Delaware



Across County Lines Tour
Phoenixville Focus • Finding Your Realtor
School Open Houses • Lagers Are King



**BERKSHIRE
HATHAWAY**
HomeServices
Fox & Roach, REALTORS®

HOLLY GROSS GROUP



Holly Gross Stephen Gross Stewart Gross Tara Rucci
Jenny Cassidy Michael Mummert Herb Schwabe Harry Price

HollyGrossGroup.com | 610-430-3030



Birchrunville

63 Acres | Converted Barn | Pool
Par 3 Golf Hole | Apple Orchard
Pond | Subdivision Possible
\$3,400,000



Near Marshallton

4 BR, 4.1 BA | 61.3 Acres | Great Views!
Fabulous Floor Plan | Volumes of Space
Large Barn | Grand Pool Area | A Showcase!
\$3,200,000



Unionville

3BR, 2.1 BA | 59.2 Acs. | Great Stable
Allowed to Build Primary Residence
Heart of Equestrian Area | Great Schools
\$2,450,000



Unionville

4 BR, 3.2 BA | 20.5 Acres | Private!
New Construction - Pick from 4 models
Unionville-Chadds Ford Schools!
\$1,749,000



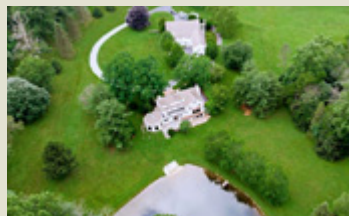
Unionville

6 BR, 3.1 BA | 35 Acres
Indoor Arena Possible | Pond
24 Stall Barn | Unionville Schools
\$1,699,000



Birmingham Township

7 BR, 4.2 BA | 28.5 Acres
Greenhouse | Pool | 4-Car Garage
Bank Barn | Unionville Schools
\$1,678,000



Warwick Township

6 BR, 5.1 BA | 22.5 Acres | Very Private!
Historic Farmhouse, Stone Barn & Pond
Near 535 Ac. Warwick Park | Priced to Sell!
\$1,075,000



Chadds Ford

5 BR, 3 BA | c.1844 | 2.1 Acres
New Kitchen | Stunning Master Bath
Well Off Road | Great Fairville Location
\$750,000



Honey Brook

3 BR, 2.2 BA | 7.8 or 4 Acres
Spacious Great Room with Kitchen
Super Master Suite & Bath | Lg. Garage
\$685,000



East Bradford

5 BR, 3.1 BA | 2 Private Acres
Open Floor Plan | Large Family Room
Newer Kitchen | West Chester Schools
\$619,900



Chadds Ford

4 BR, 2.1 BA | 1.09 Acres | Private Decks
Set in Sought-after Waterford Community
Great Floor Plan | Unionville Schools
\$617,500



East Fallowfield

4 BR, 2.1 BA | 2 Private Acres | Pool
Stunning Paneling | High-end Kitchen
Very Impressive Library | Updated Baths
\$609,000



Newlin Township

4 BR, 3 BA | 1.3 Acres | Great Views!
Stunning Kitchen & Baths | Good Location
Unionville Schools | Near Cheslen Preserve
\$569,000



West Caln Township

4BR, 2.1 BA | .48 Acres | Great Price!!
Super Kitchen & Family Rm | Nice Touches!
Fabulous Master Suite with Huge Closet!
\$345,000



West Caln Township

3 BR, 2.1 BA | 1.75 Acres | Great Value!
Loads of Improvements | 4 Garage Spaces
Solar Panels | Walk to Hibernia Park
\$305,000



Townhomes

3 BR, 2.1 BA | Southview Townhomes
1 Car Garage | Open Layout
Great Commuting Location
\$219,900



WEALTH MANAGEMENT WITH WISDOM & CARE

PATTI BRENNAN, CFP®



JOIN ME ON MY PODCAST!
The Patti Brennan Show

Dedicated to helping improve your net worth.
Get it on iTunes, Stitcher, Spotify or Google Play Music

NATIONALLY ACCLAIMED for Her Wisdom in Wealth Management...
LOCALLY RECOGNIZED for Her Care and Service to the Community...

PATTI CURRENTLY SERVES AS A BOARD MEMBER FOR CUDDLE MY KIDS AND THE YMCA OF GREATER BRANDYWINE,
AND FORMERLY SERVED ON THE BOARDS OF THE CHESTER COUNTY ECONOMIC DEVELOPMENT COUNCIL,
SEEDCO (APPROVING SBA LOANS), AND PENN MEDICINE CHESTER COUNTY HOSPITAL.

1045 ANDREW DRIVE, SUITE A
WEST CHESTER, PA 19380
610.429.9050

KeyFinancialInc.com



KEY FINANCIAL, INC.
Wealth Management With Wisdom & Care

Securities offered through Royal Alliance Associates, Inc., member FINRA/SIPC. Insurance services offered through Patricia Brennan are independent of Royal Alliance Associates, Inc. Advisory services offered through Key Financial, Inc., a registered investment advisor, not affiliated with Royal Alliance Associates, Inc.

The Forbes ranking of America's Top Wealth Advisors, is based on an algorithm of qualitative and quantitative data, rating thousands of wealth advisors with a minimum of seven years of experience and weighing factors like revenue trends, assets under management, compliance records, industry experience and best practices learned through telephone and in-person interviews. There is no fee in exchange for rankings.

The "Barron's Winner's Circle Top 1200" is a select group of individuals who are screened on a number of different criteria. Among the factors that advisors are assessed include their assets under management, revenues, the quality of service provided to clients, and their adherence to high standards of industry regulatory compliance. Portfolio performance is not a factor. Please see Barrons.com for more information.

The "Barron's Winner's Circle Top 100" is a select group of individuals who are screened on a number of different criteria. Among factors the survey takes into consideration are the overall size and success of practices, the quality of service provided to clients, adherence to high standards of industry regulatory compliance, and leadership in "best practices" of wealth management. Portfolio performance is not a factor. Please see Barrons.com for more information.



“Malvern Bank has a long history of helping the local community. Their support as our banker and as a donor since our inception in 2006 has been invaluable. Malvern Bank employees deliver a high service level through their neighborhood branches that cannot be matched by bigger banks. Yvonne at the Malvern branch recently went out of her way to save FLITE a significant amount of time in changing our account to a higher yielding money market account. This level of support allows our all volunteer organization to focus on helping local students of need succeed in the classroom while Malvern Bank focuses on our banking.”

– Vijay Aggarwal, PhD
Chairman, FLITE

MALVERN BANK, NATIONAL ASSOCIATION UNDERSTANDS THE UNIQUE FINANCIAL NEEDS OF INDEPENDENT SCHOOLS

From your seasonal cash flows to your tax-exempt financing strategies, Malvern Bank is the right financial partner for independent schools. We provide tailored money management solutions and a dedicated team to support your needs, so you can focus on providing the best educational experience for your community.

NOW INTRODUCING MALVERN BANK’S AFFINITY PROGRAM!

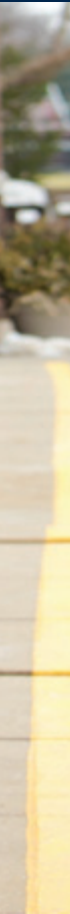
Members and supporters who wish to “link” their existing or new bank account to the non-profit organization’s account can help them earn interest!

0.50% on all non-interest bearing account balances • 0.15% on all interest bearing account balances

Affinity interest is calculated at the end of each year!

START THE CONVERSATION TODAY!

Contact us to learn more – 484.713.2002
Schools@MyMalvernBank.com or visit MyMalvernBank.com.



Welcome to our
State-of-the-Art Implant Surgery Center

“Dental Implant Surgery is, of course, surgery and best performed by an experienced ORAL SURGEON, with specialized training and education”

- ▶ Dr. Famiglio has Over 30 Years Experience
- ▶ Top 1% in Dental Implant Surgeons in the U.S.
- ▶ General Anesthesia/Sedation Available
- ▶ ADVANCED 3D Technology
- ▶ Zirconium (Non-Metal) Implants Available

DR. PETER M. FAMIGLIO

Brandywine
ORAL SURGERY

25 Dowlin Forge Road | Exton, PA 19341
213 Reeceville Road | Coatesville, PA 19320
610.363.7000
BrandywineOralSurgery.com

Board Certified Oral & Maxillofacial Surgeon, Peter M. Famiglio D.M.D.





NEVER STOP GROWING

At Five Star Senior Living we believe a healthy mind and body can feed your soul. Our signature Lifestyle360 program engages our residents to not just live — thrive. Lifestyle360 is a holistic approach to active community living that focuses on five dimensions of wellness that create a well-rounded, meaningful, active senior lifestyle. Call today to schedule your personalized community experience and start living your Lifestyle360.

DON'T JUST LIVE — THRIVE.



FIVESTARSENIORLIVING.COM

FOULK MANOR NORTH
1212 Foulk Road
Wilmington, DE 19803
(302) 478-4296

FORWOOD MANOR
1912 Marsh Road
Wilmington, DE 19810
(302) 529-1600

MILLCROFT
255 Possum Park Road
Newark, DE 19711
(302) 366-0160

FOULK MANOR SOUTH
407 Foulk Road
Wilmington, DE 19803
(302) 655-6249

SHIPLEY MANOR
2723 Shipley Road
Wilmington, DE 19810
(302) 479-0111

SOMERFORD HOUSE & PLACE
4175 Ogletown-Stanton Road
Newark, DE 19713
(302) 266-9255



FALL FESTIVAL AT PHOENIXVILLE HOSPITAL

Saturday, October 26 (rain or shine)
10 a.m. to 2 p.m.

Phoenixville Hospital
Hospital Parking Lot (off of Nutt Rd.)
140 Nutt Rd.
Phoenixville, PA 19460

- Free Children's Activities: Free pumpkin for kids, Games, Arts & Crafts
- Free Health Screenings
- Flu Shots provided by Chester County Health Department
- Meet the Doctors
- Interact with DaVinci Robot
- 33rd Annual Phoenixville Run For Citizen Advocacy (race starts at 8:30 a.m. at Reeves Park)
- Music, Food and Fun!

Free Parking!



Phoenixville Hospital
TOWER HEALTH
Advancing Health. Transforming Lives.

phoenixville.towerhealth.org



from the EDITOR

The joys of October! Changing leaves, cooler temperatures and plump pumpkins take center stage. *County Lines* country is aglow.

Fall is the perfect time to appreciate our area. Join Mercedes Thomas's tour of shops, dining, historic landmarks and fun events in "Across County Lines." Then see what Carol Metzker discovered in "Phoenixville: Dawn to Dusk"—there's always something new.

Learn more about the Brandywine Creek Greenway's 100+ parks and preserves with the new, free app as Nicole Kindbeiter helps "Increase Your 'App-Etite' for the Great Outdoors."

Parents may want to explore private schools in our "Guide To School Open Houses" and find out what to look for in Ed Malet's "School Open Houses." Plus Dr. Peter Famiglio tells us about wisdom teeth and Laura Muzzi Brennan explains "Why Hire an Independent College Counselor?"

Agent, realtor or broker? When buying or selling your home, finding someone who's both professionally qualified and easy to work with takes time and effort. In "Finding That Right Real Estate Agent," Laurel Anderson reports what the experts advise.

And gardeners may take time this season to reflect on the annual cycle of renewal and decay along with Chanticleer Gardens' Chris Fehlhaber in his essay "Always Keep Growing."

Food and beer fans will enjoy learning why lagers are making a comeback in the craft beer world. Ethan Buckman of Stickman Brews raises a glass in "Lagers, The King of Beer." Brandywine Table's Alyssa Thayer shares recipes and a story of business, cooking and supporting local agriculture in her interview with Pat and Terry Brett of Kimberton Whole Foods.

In addition to our monthly Family Fun and the Best Local Events columns, Mercedes Thomas previews The Media Theatre's first performance, *Matilda: The Musical*, while Shelly Gill talks to local business founder Beth Wilson-Parentice about her debut book, *You Glow, Girl!*

We hope you enjoy all October has to offer! Thank you for reading.

Jo Anne Durako
Editor

COMING IN November

GET HOLIDAY READY

Southern Chester County
Senior Guide • Holiday Shopping
Theater Spotlight • Local Hero
Fall Gardens • Brandywine Table

COUNTY LINES MAGAZINE

October 2019
Volume XLIII, Number 2

PUBLISHER
Edwin Malet

EDITOR
Jo Anne Durako

ART DIRECTOR
Alex Bianco

ASSOCIATE EDITOR
Marci Tomassone

ASSISTANT EDITOR
Mercedes Thomas

FOOD EDITOR
Alyssa Thayer

ACCOUNT EXECUTIVES
Deb Dickinson
Shelly F. Gill
Susan Gillespie

BUSINESS MANAGER
Debra M. French

CONTRIBUTING WRITERS
Laurel Anderson
George Fitzpatrick / Matt Freeman
Emily Hart / Carol Metzker
Fred Naddeo / Cindy Walker

CONTRIBUTING PHOTOGRAPHERS
Brenda Carpenter
Wil Moore / Timlyn Vaughan

INTERNS
Hania Jones
Casey Meyer

CONTACT US AT
ValleyDel Publications, Inc.
893 S. Matlack Street, Ste. 150
West Chester, PA 19382.
610-918-9300. Info@ValleyDel.com

Subscriptions: \$39/print; \$12/digital
Advertising: 610-918-9300

TO GET OUR NEWSLETTER
Send an email to Info@ValleyDel.com

FOR TICKET TUESDAY GIVEAWAYS
Follow us on Facebook

To find County Lines, check our website's "Get A Copy" page, pick one up at Main Point Books, Wellington Square Bookshop, and other newsstands, buy one at Wegmans, or visit advertisers listed in the Index.



County Lines Vol. XLIII, No. 2. Copyright, 2019 by ValleyDel Publications. All rights reserved. *County Lines* and *County Lines Magazine* (ISSN 0195-4121) are registered names of ValleyDel Publications, Inc. Use of these names without the consent of ValleyDel Publications, Inc. may subject the infringer to penalty and suit as provided by law.

CountyLinesMagazine.com



Karen Nader Properties

knader@bfpsir.com | 484.888.5597



Coming Soon

APPLE GROVE ROAD | W. MARLBOROUGH TOWNSHIP | 18.7 ACRES

Historic stone farmhouse, barn and springhouse in a prime location surrounded by conserved properties and the Laurel's Preserve.



POCOPSON ROAD | WEST CHESTER | 32 ACRES

The former "Padua Estate" with beautiful views, first floor master suite, in-ground pool, Koi pond and two separate homes for guests or rental.



DARLINGTON ROAD | MEDIA | 6.6 ACRES

Historic property in prime location featuring a Federal fieldstone mansion with a carriage house, cottage and barn.



New Listing

HAWKS NEST LANE | CHADDS FORD | 2.6 ACRES

Stunning six bedroom custom home located on a private lane in Unionville - Chadds Ford SD. Property backs up to conserved land.

Brandywine
Fine Properties

Sotheby's
INTERNATIONAL REALTY

WALTER J. COOK JEWELER

CONSTELLATIONS
by SUNA

36 Chestnut Road | Paoli, PA 19301 | 610.644.5347

walterjcookjeweler.com

CONTENTS

VOLUME 43, NUMBER 2 ★ OCTOBER 2019

COUNTY LINES
MAGAZINE



- 30 **YOU GLOW, GIRL!**
Beth Wilson-Parentice talks about her debut novel.
Shelly Gill
- 31 **MATILDA: THE MUSICAL**
At The Media Theatre
Mercedes Thomas
- 32 **INCREASE YOUR "APP-ETITE" FOR THE GREAT OUTDOORS**
A look at the Brandywine Creek Greenway App
Nicole Kindbeiter, Brandywine Conservancy
- 34 **ALWAYS KEEP GROWING**
Gardening for personal growth: an essay
Chris Fehlhaber, Chanticleer Garden
- 38 **LAGERS, THE KING OF BEER**
Discover the brave new world of lagers.
Ethan Buckman, Stickman Brews
- 42 **PHOENIXVILLE: DAWN TO DUSK**
It's hopping everywhere you look.
Carol Metzker
- 50 **ACROSS COUNTY LINES**
A drive through our stunning landscapes and small towns
Mercedes Thomas
- 56 **SCHOOL OPEN HOUSES**
Looking at the place your child will call home.
Edwin Malet
- 61 **GUIDE TO AREA INDEPENDENT & PRIVATE SCHOOLS, OPEN HOUSES**
- 72 **FINDING THAT RIGHT REAL ESTATE AGENT**
The best agent may depend on you and your home.
Laurel Anderson
- 77 **BRANDYWINE TABLE**
The Kimberton Whole Foods story of family, business, cooking and commitment to local agriculture.
Alyssa Thayer

departments

13 BEING WELL
15 WORTH KNOWING

17 GOOD TO KNOW
19 OCTOBER PICKS

20 BEST LOCAL EVENTS
75 FOOD NEWS
82 INDEX



I chose Sage

SAGELIFE disrupts the negative paradigms around aging; outdated mindsets that have been barriers to recognizing community living as an aspirational move; as the wisest choice for aging well.



ECHO LAKE



MALVERN, PA | LivingAtEchoLake.com
484-568-4777 | Retirement Living, Reinvented



DAYLESFORD CROSSING

PAOLI, PA | DaylesfordCrossing.com
610-640-4000 | Supportive Living & Memory Care



PLUSH MILLS

WALLINGFORD, PA | PlushMills.com
610-690-1630 | Independent & Supportive Living



KYFFIN GROVE

NORTH WALES, PA | KyffinGrove.com
267-460-8100 | Supportive Living & Memory Care



SAGELIFE | Living to the Power of You



[Being Well]

Be Wise About Wisdom Teeth

Dr. Peter M. Famiglio

WHAT SHOULD YOU DO WITH THOSE THIRD MOLARS?

EACH YEAR ABOUT 4 MILLION PEOPLE REMOVE 10 MILLION wisdom teeth—that third set of molars in the back four corners of your mouth. These extractions occur primarily among 15 to 25-year-olds, those at the age when wisdom teeth generally become an issue.

Interestingly wisdom teeth have not been needed for thousands of years, since our diets included more cooked and softer foods. Some think of them as akin to our appendix.

And like the appendix, wisdom teeth can become a pressing medical problem. Your dentist may refer you to an oral surgeon because of current problems or a strong possibility of future issues. Early intervention may greatly reduce complications associated with extracting the teeth.

In deciding to keep or remove your wisdom teeth, here are some things to consider.

How can you tell if wisdom teeth need to be removed? There's no simple answer, but it's more likely if you're having symptoms. For example if there's pain, infection, gum disease (which can destroy supporting bone), teeth crowding, impacted teeth or other problems. Sometimes you won't have symptoms, although there may be decay on the wisdom teeth or adjacent teeth. Plus bacteria harmful to other teeth and gums resulting in chronic inflammation can have cardiac health implications. In rare cases, cystic lesions or tumors can occur around impacted teeth.

When should wisdom teeth be evaluated? Typically, when your child becomes a teen. Your oral surgeon may recommend removing the teeth and the best time to do that. Optimal timing depends on root formation—less developed roots makes extraction less complicated and less risky.

If you're getting the teeth removed, how do you prepare? Check with your surgeon to discuss your anesthesia choices. If sedated, don't eat or drink 8 hours before your appointment. And have a driver to take you home. You aren't permitted to drive yourself.

What's the procedure like? It's an outpatient procedure done with some type of sedation or general anesthesia. You'll talk with your oral surgeon about your health, medical history, medications and anxiety level to be evaluated and to determine the best anesthesia option.

A typical case takes about 20 to 30 minutes of actual surgical time to remove four bony impacted teeth (teeth inside the jawbone). But

expect to be in the office for one-and-a-half to two hours for anesthesia, set up and recovery.

The set up process includes several monitors for your safety including EKG, cardiac monitor, blood pressure, and measures of oxygen in the blood. A stethoscope is placed on your airway to monitor breathing sounds.

What happens after the procedure? You'll be taken to a recovery area and closely monitored. Your surgeon will determine when you're ready for discharge.

What's the post-operative care? Rest for the next 24 hours. And even with difficult cases, recovery should be smooth and comfortable with minimal to moderate swelling and minimal to moderate discomfort. A smooth recovery is possible without using narcotics. Given current concerns with opioids, patients are encouraged to use alternatives. There are non-opioid pain options that have proven to be equally effective.

What should I expect? Expect minimal bleeding that should subside over the first 24 hours and some stiffness in the jaw over the first week. Doing jaw-stretching exercises after the first several days can help. Limit your diet to soft foods for a few days to minimize chewing and avoid aggravating the muscles. At day 5 you'll use a syringe to irrigate the area and begin brushing gently over the incisions.

What about a return visit? Most surgeons use sutures that dissolve in 3 to 5 days, so there's no need to return to have them removed. However, patients are encouraged to feel free to call if there are any questions, symptoms or other concerns.

Oral surgeons are experts at this procedure. Let them share their wisdom. ♦

A graduate of Boston College, Dr. Famiglio earned his dentistry degree from Temple University and completed his oral and maxillofacial surgery training at Saint Luke's/Roosevelt Trauma center in Manhattan. He's a board-certified oral surgeon, among the top 1% in the country, and brings his expertise home to where he was born and raised. Offices in Exton and Brandywine. BrandywineOralSurgery.com.





A CULTURE OF CARING

The Concept School is co-educational independent school for students grades 6–12. At TCS, we educate students who learn differently and benefit from a smaller, relaxed, more personalized environment where learning and anxiety challenges are seen as opportunities to explore alternative routes to success.

67%

Faculty with
Advanced Degrees

96%

Parents Satisfied
with Their Child's
Experience

4:1

Ratio of
Students to Teachers

1972

Year
Founded

8

Average Years
a Student
Stays at TCS

100%

Students likely to
Recommend TCS
to a Friend



THE CONCEPT SCHOOL

1120 East Street Road, Westtown, PA 19395 | theconceptschool.org

Phone 610.399.1135 | Fax 610.399.0767

[Worth Knowing]

Why Hire An Independent College Counselor?

Laura Muzzi Brennan

IF YOUR CHILD IS COLLEGE-BOUND, YOU'VE LIKELY HEARD the buzz about independent college counselors. In a nutshell: we're the counselors who work one-on-one with students outside the high school setting to help them identify and apply to colleges where they'll thrive intellectually and socially.

I'm frequently asked "Why hire an independent college counselor?"

My quick answer: You probably wouldn't take a DIY approach to buying a home. You'd hire a realtor who understands your needs, finances and the current market. Since your child's college education is probably your second largest investment, it makes sense to seek an expert's advice about that.

And my longer answer: An independent college counselor complements a high school counselor's work. While your child's school counselor plays a valuable role, the reality is that at many high schools, college counseling is just *one* of that counselor's responsibilities. The average public school counselor carries a caseload of a few hundred students, making it near impossible to provide individual attention—the cornerstone of an independent counselor's practice.

Independent college counselors view each student holistically, looking beyond test scores, grades and intended major. By asking targeted questions about preferred intellectual environment, relationships with professors as well as study abroad, we can create a balanced list of the reach, target and likely colleges that "fit" a student academically, socially and financially.

To develop these lists—and guide students through applications—independent counselors keep abreast of the ever-evolving college landscape, including admission trends. It's common for us to work with families whose college knowledge is incomplete or outdated. Often, parents remember College X as a "party school" with a high admit rate, not realizing over the past 30 years that the college has become highly selective.

The irony is there's more information about colleges at our fingertips than ever before (think college websites, the *Fiske Guide* and *America's Best Colleges for B Students*), yet parents and students have less time to sift through it. Independent counselors, however, visit scores of college campuses each year and talk shop with colleagues through professional associations. As we research, we know which online sources to trust and can suggest colleges beyond the 50 everyone knows.

Independent counselors also guide students through the application process, a time-consuming venture on top of homework and extracurriculars. When I taught English in the 1990s at Wilmington's Ursuline Academy, my students, who asked me to review their college essays, applied to about 5 colleges. Now, most students I see apply to 8 to 12 schools.

While the Common and Coalition for College Applications streamlined the process, many colleges require essays in addition to the main personal statement. Many counselors also offer essay guidance—from brainstorming topics to giving feedback on drafts—and help students stay organized and on track to meet deadlines.

One more reason to consider an independent counselor—and this may ring true for many families—a counselor brings calm to a process that's often stressful for students ... and parents. (As the mother of a college junior and a high school senior, I know of what I speak.) Because the counselor sets deadlines and provides honest feedback and reality checks, parents can take on the role of cheerleader and maybe discuss matters other than college with their child.

So how do you find a counselor? Ask friends for recommendations and check out professional organization websites (Higher Education Consultants Association, Independent Educational Consultants Association) for counselors in your area. These counselors have not simply been vetted in terms of qualifications, they're bound by a code of ethics—spelled out on the websites.

Although it may seem obvious in light of the recent Varsity Blues scandal, remember that a counselor who guarantees admission to any college is waving a bright red flag.

My final pieces of advice: before you hire someone, have a clear understanding of their services and fees. And above all, make sure your child feels comfortable with that person because finding a "good fit" counselor is the first step to a successful and enjoyable college process for the whole family. ♦

Laura Muzzi Brennan co-founded *College Composed* with Liz Price. Together they guide students through the college search and application process, including essay support. With Laura in the Delaware Valley and Liz in the San Francisco Bay Area, they cover the college scene from coast to coast. Learn more at CollegeComposed.com.





SETTING THE STANDARD FOR 40 YEARS

Complete design services and fine craftsmanship
Custom barns, arenas, garages and living quarters



1-888-354-4740 | www.kingbarns.com

HISTORIC PRESERVATION | CUSTOM HOME BUILDING | ADDITIONS | RENOVATION | KITCHENS & BATHS

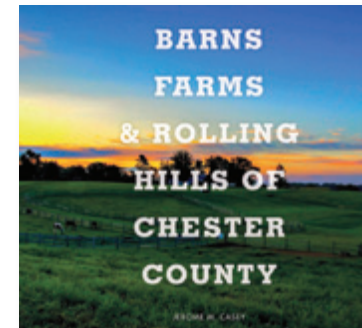
BUILDING WITH PASSION.

E.C. Trethewey III
BUILDING CONTRACTORS INC.

DOWNINGTOWN, PENNSYLVANIA • 484.593.0334 • WWW.ECTBUILDERS.COM

[Good to Know]

Just a few things we'd thought you'd like to know this month



Picture This. Travel from sunrise to sunset through the scenic hills, conserved areas and pastoral farmlands of Chester County—enjoying beautiful landscapes worthy of a roadtrip ramble. Or go on an armchair photographic journey of the area with Jerome Casey's

new book, *Barns, Farms & Rolling Hills of Chester County*. A local resident for 14 years, Casey memorializes a simpler time with 166 photographs of old barns, gravel lanes, livestock and more. A must-have book for Chester County fans. Jerome-Casey.com.

Hit the Trails. Put on your hiking boots! Before the season ends, make your way to **Nottingham County Park**, a Natural National Landmark. The 651-acre park sits atop an outcropping of rare, light green serpentine stone greater than one square mile—one of the largest serpentine barrens on the East Coast. Explore the park's Buck Trail, recently expanded with new acreage awarded by the Nature Conservancy to protect Chester County's oldest park. Great news for nature lovers! *150 Park Rd., Nottingham. ChesCo.org.*



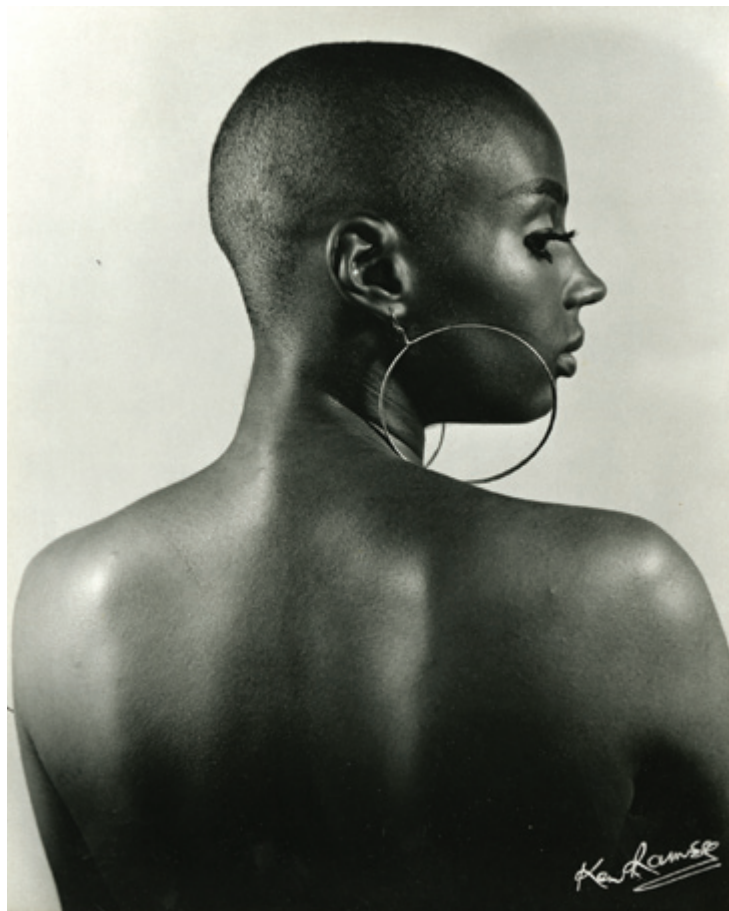
Not-So-Haunted Hayrides. Visit Highland Orchards for festive fall fun where the only chill is the one in the air. *By the Light of the Silvery Moon Hayrides* feature a non-scary, leisurely ride through the orchard. Afterward warm up around the campfire with a cup of Highland's own cider and goodies. Never fear—even ticket prices are less than frightening at \$7 per token at the Red Shed. Fridays and Saturdays, through early November. *1000 Marshallton Thorndale Rd., West Chester. HighlandOrchards.net.*

Best Commute Ever! There's a new ride program that's greener for the environment and your bank account. **West Chester Free Ride**, a new free, eco-friendly transportation service and mobile advertising program, takes the hassle out of traveling and parking in the Borough. Ride in style with all-black fully electric vehicles. These rides are zero-emission transportation helping the Borough achieve its goal of a 100% renewable electricity community by 2035. *For a free ride, 484-259-7936. WCFreeRide.com.*



Tracking Human Trafficking. Ann Marie Jones, a local survivor of human trafficking, and Carol Metzker, an activist and local author, educate readers about the horrors of traffickers' sickening playbooks—used to manipulate and sell girls for sex. Their new book, *A Shield Against the Monster*, gives parents, teachers and community members who care about children a playbook of their own. A must-read to protect kids and prevent new victims. Get a copy at your local independent bookstore.





DELAWARE ART MUSEUM

WHAT IS BEAUTY TO YOU?

Posing Beauty in African American Culture

Exhibition on view
October 19, 2019 – January 26, 2020

Posing Beauty in African American Culture is curated by Deborah Willis and organized by Curatorial Assistance Traveling Exhibitions, Pasadena, California. This exhibition is sponsored by M&T Bank and made possible in Delaware by the Johannes R. and Betty P. Krahmer American Art Exhibition Fund. Additional support is provided, in part, by a grant from the Delaware Division of the Arts, a state agency, in partnership with the National Endowment for the Arts. Image: Susan Taylor, as Model, c. 1970s. Ken Ramsay (1935–2008). Gelatin silver print, 19 3/4 x 15 3/4 inches. Courtesy of Susan Taylor. © Ken Ramsay Foundation.

2301 Kentmere Pkwy | Wilmington, DE
302.571.9590 | delart.org

SAVE YOUR HISTORY!


Help us save History.
Listen, hear echoes from the **first PA Women's Rights Convention** held June 2-3, 1852 in Thomas U. Walter's Horticultural Hall, the home of Chester County Historical Society.

Our historically and architecturally significant building is in **danger**. The roof is leaking, the chimneys are crumbling.


We are competing for a **national grant** to secure funding for our roof repairs. We need your help.

Vote for the Chester County Historical Society. Save the History of those who stood **Under One Roof**. *Listen*, and hear the echoes of the past speak to our community's future.

CAST UP TO FIVE VOTES DAILY AT
VoteYourMainStreet.Org/WestChester



UNDER ONE ROOF



CHESTER COUNTY HISTORICAL SOCIETY
VOTE TO SAVE YOUR HISTORY:
VoteYourMainStreet.Org/WestChester

SAVE THE DATE!

YOUR ATTENDANCE COULD BE WORTH \$50,000!

BLOCK PARTY AND OPEN HOUSE
Saturday, October 19th, 2019
12:00-6:00PM


Chester County Historical Society
225 N. High Street West Chester, PA

Free admission, free garage parking, complimentary beverage!

Live Music, Beer Garden by Saloon 151, Food Trucks, Children's Activities, Historical Reenactors

Help us triumph and show the Nation Our History Matters.

Come between 12-4 pm to vote in person. The place with the most in-person votes will win \$50,000!



[October Picks] Our Picks for top events this month

Palette to Palate—A Tasting & Art Show

October 26

Join area artists, local farmers, farmers' markets and the Brandywine Conservancy as they bring awareness through art of the resources of open space and sustainable agriculture in our region. Featuring 250 original works of art by



more than 50 artists, along with children's activities and local chefs creating small plates inspired by seasonal ingredients from area farms and farmers' markets. Libations provided by local wineries, distilleries, cideries and breweries. *Rose Hill Farm, 490 Apple Grove Rd., Coatesville. 10:30 a.m. to 4 p.m. \$50, children under 10 are free. LandArtEvents.com.*

People's Light—Dot

Through October 20

A West Philly family gathers for the holidays in Colman Domingo's hilarious, heartfelt comedy-drama. Dotty's memory is slipping and her three children clash over how best to care for the proud, lovable matriarch. *People's Light, 39 Conestoga Rd., Malvern. Check website for times and tickets. 610-644-3500; PeoplesLight.org.*



Philly Fights Cancer Fundraiser

October 26

This celebration showcases world-class entertainment, featuring cinema and stage star Hugh Jackman, comedian John Mulaney and multi-platinum-selling pop artist Andy Grammer. Benefits the clinical trials and translational research at Penn Medicine's Abramson Cancer Center. *The Navy Yard, Kitty Hawk & League Island Blvd., Philadelphia. 6 p.m. to 1 a.m. For more information visit PhillyFightsCancer.org.*



To Love a Canine Rescue—Miles For Mutts

October 6

Run or walk the 3.1-mile course through the grounds at Wilson Farm Park. There will be water stations along the way for people and dogs, vendors, a food truck and TLC's adorable adoptables will be on hand. For a \$20 donation, one of these available dogs can accompany you on your 1-mile walk. Benefits TLC. *500 Lee Rd., Wayne. 8 a.m. to noon. \$15–\$35. 610-908-2855; TLCRescuePA.com.*



Thorncroft Equestrian Center's 10th Annual Lobstah Bake & BBQ

October 13

Plenty of lobstah, pork barbecue by Jimmy's BBQ, beer garden, live music from Red Planet Groove, and kids entertainment. Rain or shine. *Jimmy Moran North Arena, 190 Line Rd., Malvern. 4 p.m. to 9 p.m. Tickets \$95 and up. Reservations a must. 610-644-1963; bit.ly/lobstah2019.*



best Local Events

FAMILY FUN

OCTOBER 5

8th Annual Truck & Tractor Day at Winterthur. Explore the tractors, modern farm vehicles and the Winterthur fire trucks. Enjoy a hayride, arts and crafts, ice cream and more. 5105 Kennett Pk., Winterthur. 10 to 4. \$6-\$20. 800-448-3883; Winterthur.org.



OCTOBER 5

Story Time at Main Point Books. Joel Anderson: Medieval Trio Tales: Courage at the Concert. 116 N. Wayne Ave., Wayne. 10:30. 484-580-6978; MainPointBooks.com.

OCTOBER 5

Delaware Nature Society Harvest Moon Festival. Children's activities and crafts, hayrides, music, live animal photo booth, food, and wagon and pony rides. Coverdale Farm, 543 Way Rd., Greenville, DE. No dogs. Rain date, Oct. 6. 10 to 5. \$10. 302-239-2334; DelawareNatureSociety.org.

OCTOBER 5

Newlin Grist Mill Fall Harvest Festival. Artisans demonstrate a variety of Colonial trades, hay rides, pumpkin painting and games. 219 Cheyney Rd., Glen Mills. 10 to 4. Free. \$5 parking. 610-459-2359; NewlinGristMill.org.

OCTOBER 6

Radnor Fall Harvest & Great Pumpkin Patch. Tractor and pony rides, pumpkin patches and painting, hayrides, music and moon bounces. The Willows, 490 Darby-Paoli Rd., Radnor. 1 to 4. Free. Rain date, Oct. 13. 610-688-5600; Radnor.com.

OCTOBER 6

Railroad Museum of PA Hosts 13th Annual Garden Railways Tour. Take the family for a

self-guided tour of operating model trains in 10 garden settings. Tour sites in Wrightsville, Lancaster, Coatesville, Manheim and Lititz. 300 Gap Rd., Strasburg. \$10, 5 and under free. 1 to 5. Tickets at RRMuseumPa.org.

OCTOBER 6, 13, 20, NOV. 2, 3, 9, 10

West Chester Railroad Fall Foliage Express. Enjoy a brisk fall afternoon along the picturesque Chester Creek Valley on a 90-minute journey back in time to the village of Glen Mills. Trains depart the station at 203 E. Market St., West Chester. Noon and 2 pm. \$13-\$15. 610-430-2233; WestChesterRR.net.

OCTOBER 12

Doggerel Day in Centreville. Celebrate all things canine and watch sheep herding and police dog demos, Jack Russell Terrier races, dog Halloween costume contest, parade, food trucks and vendors. Canby Grove Park, Kennett Pk. & Twaddle Mill Rd., Centreville, DE. 11 to 4. 302-777-FIND; CentrevilleDe.info.

OCTOBER 12

6th Annual Upper Main Line Rotary Oktoberfest Main Line. Games, pumpkin decorating, face painting, live music, dancing, German food and a great beer selection all under a huge tent. Church of the Good Samaritan, 212 W. Lancaster Ave., Paoli. Noon to 7:30. Adults, \$10. UMLRotary.org.

OCTOBER 12-13

Pumpkin Days at Tyler Arboretum. Traditional autumn festival with lots of activities, food, crafts, wagon rides, music, wildlife demonstrations and pumpkins. 515 Painter Rd., Media. Daily 10 to 5. \$9-\$15. 610-566-9134; TylerArboretum.org.

OCTOBER 17-19

The Great Pumpkin Carve. Open-air festival featuring over 70 giant pumpkins carved into spooktacular creations and illuminated for three evenings. Enjoy the kid friendly Haunted Trail, hayrides and live music. Across from the John Chad's House, Rt. 100 N., Chadds Ford. Thurs-Fri, 4 to 9; Sat, 3 to 9. \$5-\$15. 610-388-7376; ChaddsFordHistory.org.

OCTOBER 19

Treehouse World Presents Fall Festival 2019. Enjoy a day of family fun and treehouses, pumpkin painting, face painting, adventure activities, carnival games, tree climbing and

food. 1442 Phoenixville Pk., West Chester. 10 to 4. 484-329-7853; TreeHouseWorld.com.

OCTOBER 19

Delaware Museum of Natural History—Monsters at the Museum. A delightful (not frightful) event getting to know the insect collection. Learn about the arthropods behind retro monster movies, collect Halloween treats from staff and create festive crafts. They'll be having a costume contest, too! 4840 Kennett Pk., Wilmington. 11 to 2. \$3-\$9. 302-658-9111; DelMNH.org.

OCTOBER 19

Chester County Historical Society Open House & Block Party. Gather at Chester County Historical Society for a day of family fun and a surprising opportunity to make history. Food, entertainment, games, tours and adventures for all ages. 225 N. High St., West Chester. Noon to 6. Free. 610-692-4800; ChesterCoHistorical.org.

OCTOBER 23

West Chester Halloween Parade. Begins on Market St. between Church & Darlington. Marching bands and cheerleading performances featured. 7 pm. Rain date, Oct. 24. 610-436-9010; West-Chester.com.

OCTOBER 25

Radnor Township Trick-or-Treat. Ages 5 and under can come to the township building dressed in their costumes and enjoy a safe and fun trick-or-treat. Activities and free pumpkins for decorating. 301 Iven Ave., Wayne. 9 to 4. Free. 610-688-5600; Radnor.com.

OCTOBER 26

55th Annual Delaware County Halloween Parade. School bands, fire engines, classic and antique cars, floats, clowns, scouts and costumed trick or treaters. State St., Media. Rain date Oct. 27. 1 pm. VisitMediaPA.com.

OCTOBER 26

Haunted Helicopters at American Helicopter Museum. Trick-or-treaters of all ages are invited to celebrate with storytelling, movies, spooky music and a craft activity. Locust Lane Brewery brings treats for adults (cost extra). Come in costume and join the fun. 1220 American Blvd., West Chester. 6 to 8. Check website for tickets. American-Helicopter.Museum.

ART, CRAFT & ANTIQUES.....

OCTOBER 4

West Chester Autumn Gallery Walk presented by Sunset Hill Jewelers & Fine Arts Gallery. Stroll through downtown West Chester for an evening of art, dining and shopping. 5 to 9. GreaterWestChester.com.

OCTOBER 4-19

Celebrating Clay at Historic Yellow Springs. Invited artists showcase contemporary and diverse ceramics. Opening reception Oct. 4, cocktails, hors d'oeuvres, music. 6 to 9, \$75. 1685 Art School Rd., Chester Springs. Free. 610-827-7414; YellowSprings.org.

OCTOBER 10-31

Chester County Art Association October Fundraiser—4x40: Art Exhibit and Art Grab. Forty Chester County artists have created 4 miniature pieces to add to your collections. Oct. 11, purchase tickets to participate in an art grab and take a piece home. After the art grab, the gallery will feature one larger piece for the remainder of October. 100 N. Bradford Ave., West Chester. ChesterCountyArts.org.

OCTOBER 18-20

Plein Air Brandywine Valley. A competition, show and sale featuring artists painting and photographing the most scenic properties of the Brandywine Valley. Reception Fri, 7 to 10, \$100. The Visitor Center of Winterthur Museum, Rt. 52, Winterthur. Display continues Sat-Sun, 10 to 4. Free. PleinAirBrandywineValley.org.

OCTOBER 18-20

Flying Colors Annual Fine Artists Show. All-women show of professional artists offering original works. Montgomery School, Rt. 113, Chester Springs. Reception Fri, 6 to 9; Sat-Sun, 10 to 5. 610-269-9807; FlyingColors.us.

OCTOBER 19-20

Hagley Craft Fair. More than 50 artisans from the Mid-Atlantic area will display and sell their fine arts, crafts and gourmet items. Hagley Museum & Library, 298 Buck Rd., Wilmington. Sat, 10 to 5; Sun, 10 to 4. \$5. 302-658-2400; Hagley.org.

OCTOBER 26-27

Elverson Antiques Show. For the 100th time, the doors open to one of the region's premier antique shows. Over 30 dealers offer folk art, furniture, stoneware, art and Americana. Benefits and is held at Twin Valley High School, 4897 N. Twin Valley Rd., Elverson. Sat, 11 to 5; Sun, 11 to 4. \$7. 707-310-4488; Elverson-AntiqueShow.com.

CARS ... AND MORE CARS.....

OCTOBER 4-6

Delaware Auto Show. The latest 2020 models,

a kids Fun Zone and more. Chase Center on the Riverfront, 815 Justison St., Wilmington. Daily 10 to 6, \$10. DelawareAutoShow.com.

OCTOBER 6

Kennett Symphony Presents The Classics at Brantwyn. Brunch, Blues & Hot Cars—open bar, brunch, music and cars. Brantwyn Estate, 600 Rockland Rd., Wilmington. 10:30 am. \$95. 610-444-6363; KennettSymphony.org.

DANCE.....

OCTOBER 26-27

Brandywine Ballet Presents Carmina Burana.

Choreographed by Nancy Page and set to composer Carl Orff's masterpiece. Emilie K. Aplundh Concert Hall, University Ave. & S.



LET US UNLOCK YOUR PROPERTY'S FULL POTENTIAL!
FLOWING SPRINGS
landscape design, inc.



SPECIALIZING IN
Patio • Walks & Stone Walls • Tree & Shrub Pruning
Decorating • Landscape Lighting • Total Property Maintenance
Custom Pools • Water Features • Natural Stone

610.408.0739
RTBurns426@gmail.com

Richard T. Burns ~ Horticultural Designer, Owner

426 Old Conestoga Road, Malvern PA
www.FlowingSpringsDesign.com



Be sure to see our Phoenixville article for events happening there.

High St., West Chester. Sat, 4 pm; Sun, 2 pm. \$25–\$42. 610-696-2711; BrandywineBallet.org.

DESIGN / HOME SHOWS.....

OCTOBER 4–6

25th Annual Philadelphia Furniture Show.

This juried show and sale of artisan quality furniture is the longest running exhibition of its kind, setting the bar for heirloom handmade furniture and furnishings. 23rd Street Armory, 22 S. 23rd St., Philadelphia. Preview Fri, 6 to 9, \$45–\$75; Sat, 10 to 6; Sun, 10 to 5. \$8–\$15. 207-781-2982; PhiladelphiaFurnitureShow.com.

EQUESTRIAN.....

OCTOBER 10–19

Pennsylvania National Horse Show. One of the largest indoor horse shows in the country.

Oct. 11–14, Junior Weekend; *Oct. 15–20*, Senior Week. Farm Show Complex, 2300 N. Cameron St., Harrisburg. \$7–\$50. 717-770-0222; PaNational.org.

OCTOBER 12

Radnor Hunt Horse Trials. Autumn eventing continues with dressage, show jumping and cross country. A pig roast, live music and a silent auc-

tion follow at 3. Donations. 826 Providence Rd., Malvern. 8 am. RadnorHuntHT.org.

OCTOBER 17–20

The Dutta Corp. Fair Hill International 3-Day Event.

Olympic-caliber athletes take on drops and fences at top speeds. The Festival in the Country features food, Kids' Corner and more. Gallaher Rd. off Rt. 273, Fair Hill, MD. \$5–\$30. 410-398-2111; FairHillInternational.com.

NOVEMBER 3

85th Running of the Pennsylvania Hunt Cup.

A timber steeplechase race with a distance of 4 miles and 22 fences. Enjoy vendors, a carriage parade, and, new this year, tailgating under tents. N. of Rt. 926 and Newark Rd., Unionville. Gates open, 10:30. \$75/car. Benefits Chester Co. Food Bank, Work to Ride, Upland Country Day School, Coatesville Youth Initiative. 484-888-6619; PaHuntCup.org.



FESTIVALS & FAIRS.....

THROUGH OCTOBER 27

The 39th Season of the Pennsylvania Renaissance Faire.

A cast of hundreds fill the shire with music, dancing, merchants and more. Mt. Hope Estate, 2775 Lebanon Rd., Manheim. Sat–Sun, 11 to 8. \$12.95–\$31.95. 717-665-7021; PAREnFaire.com.

OCTOBER 5–7

95th Annual Unionville Community Fair.

Family activities, contests, music, live animal exhibits, food, hayrides, auction on Sun. Landhope Farms, 101 E. Street Rd., Kennett Square. Fri, 9 to 9; Sat, 10 to 9; Sun, 10 to 5:30. UCFairInc.org.

OCTOBER 6

Ryerss Farm Blessing of the Animals. Bring your dogs, cats or other small animals on a leash or in a carrier for a short, non-denominational service and blessing. Lunch and hayrides offered. 1710 Ridge Rd., Pottstown. Noon to 3. 610-469-0533; RyerssFarm.org.

FILM.....

NOVEMBER 1–3

Red Rose Film Festival. The motivation of this festival is enriching the community of Lancaster & Central PA by promoting the arts and inde-

Breast Cancer Awareness Month

OCTOBER 12

Making Strides Against Breast Cancer of Wilmington.

Walk to raise awareness and funds to save lives from breast cancer. Tubman-Garrett Riverfront Park, 80 Rosa Parks Dr., Wilmington. To register, 302-669-6323; MakingStrides.ACSEvents.org.

OCTOBER 12

Susan G. Komen 17th Annual Pink Tie Ball—An Evening As The Stars.

Cocktails, silent auction, entertainment, dinner and dancing. Special guest and honoree, Ed Rendell. Vie, 600 N. Broad St., Philadelphia. 6 pm. \$625. 215-238-8900; KomenPhiladelphia.org.

OCTOBER 18

PA Breast Cancer Coalition 2019 Conference.

A full day of workshops, awards ceremony, scholarship recipients, exhibits and luncheon. Hilton Harrisburg Hotel, One N. Second St., Harrisburg. 800-377-8828; PABreastCancer.org.

OCTOBER 18–20

Susan G. Komen Philadelphia 3-Day.

Take on 60 miles to end breast cancer or register as a one-day, 20-mile participant. Visit The3Day.org.

OCTOBER 24

Unite for Her Harvest Chef & Wine Tasting Event.

Rustic chic farm-to-table chef tasting event featuring the region's best chefs, wines, brews and spirits, an auction and live music. Phoenixville Foundry, 2 N. Main St., Phoenixville. 5:30 to 9:30. \$175–\$225. UniteForHer.org/Harvest.

NOVEMBER 9

Living Beyond Breast Cancer's Annual Black-tie Gala—The Butterfly Ball.

One of LBBC's most important events. Loews Philadelphia Hotel, 1200 Market St., Philadelphia. 6:30 to midnight. Tickets \$400 and up. 484-708-1804; LBBC.org.

NOVEMBER 23

Linda Creed Breast Cancer's Fun, Fashion & Friends Luncheon.

Join the fun with great food, raffles, auctions, shopping and cash bar. Hilton Philadelphia, 4200 City Ave., Philadelphia. 11 to 2. \$65. 215-564-3700; LindaCreed.org.

pendent film. \$10–\$200. Visit website for more info. 717-356-0070; RedRoseFilmFestival.com.

FOOD, BREWS & SPIRITS.....

OCTOBER 3, 5

King of Prussia Beerfest Royale.

Over 50 craft and international brewers, 100+ beers and area restaurants in an outdoor beer garden and live music. *Oct. 3*, The King's Plate, a regal pairing event and competition, 5:30 to 9, \$70–\$85; *Oct. 5*, the Main Event, VIP, 3:30 to 8:30, \$70; general admission 4:30 to 8:30, \$45. Designated driver, \$15. KOPBeerfest.com.

OCTOBER 4

Colonial PA Plantation: Spirits at Sunset.

Enjoy a haunted Happy Hour with specialty cocktails and light hors d'oeuvres while learning the history of the c. 1720 farmhouse and going on a ghost investigation. Ages 21+ only. 3900 N. Sandy Flash Dr., Newtown Square. 6:30. \$35. 610-566-1725; ColonialPlantation.org.

OCTOBER 6

Media Food & Crafts Festival. Restaurants and craftspeople display on State Street. Music and children's activities, too. 9 to 5. Rain date, Oct. 13. 610-566-5039; VisitMediaPA.com.



SV DENTAL

We treat every patient like family



Theresa M. Smith DDS
Carlos E. Vila DDS

now accepting new patients

195 W. Lancaster Ave, Suite 1 Paoli, PA 19301

610.296.7797

WWW.SVDENTAL.COM

Proud member of the Kennett Square
community for over 5 years.



CONNOISSEUR TRAVEL

Upgrade Your Expectations



Vacation Travel
Business Travel
Groups & Meetings

855.469.8998

www.CTLVACATIONS.com

Washington, DC • Kennett Square, PA • Lynchburg, VA

Discover the

Wealth

of differences from
your community's bank.



MEET KURT KUNSCH, SVP

Wealth is managed best by people you know, institutions you trust and a bank that has the community's back.



Your Community's Bank.™
www.PhoenixFed.com | 610.935.8304

PHOENIXVILLE FEDERAL
BANK & TRUST
Wealth Management

Investments | Retirement Planning | Trust & Estate Services

Investments are not FDIC insured. May lose value. No bank guarantee.



Wolf
Sanctuary of PA
[extinct is forever]
wolfsanctuarypa.org

Visit and learn!

Sat/Sun Tour
Oct-May - 12PM
Jun-Sep - 10AM

Tues/Thurs Tour
10AM
By reservation
717-626-4617

465 Speedwell Forge Rd, Lititz, PA 17543

OCTOBER 12

Conshohocken Beer Festival. Over 50 local, regional and national craft beers, plus local food, tailgate games and live music. Benefits the Conshohocken Plymouth Whitemarsh Rotary. A.A. Garthwaite Stadium, E. 11th & Harry St., Conshohocken. 1 to 5. \$50. ConshyBeerFest.Ticketleap.com.

OCTOBER 12

Lititz Chocolate Walk. Eat your way across town with delectable samples donated from some of the region's top chefs, bakers, ice cream shops and candy makers. Benefits children-focused charities in the Lancaster County region. Parking available throughout town and at Linden Hall School for Girls, 22 E. Main St., Lititz. 10 to 4. \$40. LititzChocolateWalk.com.

OCTOBER 13

Rotary Club of West Chester—17th Annual Chili Cookoff. Over 70 chili-cooking teams compete for prizes. Crafters, a kid's zone, food trucks, live music and more. Benefits local non-profits. Gay St., West Chester. 10:30 to 3:30. Rain or shine. Wristbands, \$12. 484-467-3415; WestChesterChiliCookoff.com.

OCTOBER 13

Vendemmia da Vinci Wine and Food Festival. A celebration of Italian culture, wine, music and food. Tubman Garrett Park, Wilmington Riverfront, Wilmington. 2 to 6. \$60. ItalianWineFest.com.

OCTOBER 19

The Harvest Gathering: A Celebration of Local Art, Music, Food & Beer. You'll enjoy beer and hard cider tastings, pizza prepared in the CAC's outdoor pizza oven, live music, an exhibition of paintings and kids art activities. Community Arts Center, 414 Plush Mill Rd., Wallingford. Noon to 4. \$10–\$150. 610-566-1715; CommunityArtsCenter.org.

NOVEMBER 1–2

TASTE! Philadelphia Festival of Food, Wine & Spirits. A premier food and drink event with demonstrations by celebrity chefs, tastings, exhibits and more. Valley Forge Casino Resort, 1160 1st Ave., King of Prussia. Fri, 6 to 10 pm; Sat, 11 to 8. \$15–\$90. GourmetShows.com.

FUNDRAISERS.....

See also: FOOD

OCTOBER 5

Food Trucks for Fire Trucks in Media. Bring your appetite to this food truck extravaganza where all proceeds go the Media Fire Hook and Ladder #1, Station 23. Edgemont St., Media. 11 am. VisitMediaPA.com.

OCTOBER 7

People's Light Golf Classic. Come out for a

Local Farm Markets

Artisan Exchange, 208 Carter Dr. Unit 13 B, West Chester. *Sat, 10 to 2.* ArtisanExchange.net.

Bryn Mawr Farmers Mkt., Lancaster Ave. Bryn Mawr train station parking lot. *Sat, 9 to 1.* FarmToCity.org.

Downingtown Farmers Mkt., Log Cabin Field, Kerr Park, Pennsylvania Ave. *Sat, 9 to 1.* 610-836-1391; GrowingRootsPartners.com.

Eagleview Farmers Mkt., Eagleview Town Crt., Wellington Sq., Exton. *Thurs, 3 to 7.* 610-836-1391; GrowingRootsPartners.com.

Jennersville Farmers Mkt., 352 N. Jennersville Rd. *Wed, 3 to 7.* 610-345-1763.

Kennett Square Farmers Mkt., 113 E. State St. *Fri, 3 to 7.* 610-444-8188; HistoricKennettSquare.com.

Lancaster County Farmers Mkt., 389 W. Lancaster Ave., Wayne. *Wed & Fri, 8 to 6; Sat, 8 to 4.* 610-688-9856; LancasterCountyFarmersMarket.com.

Malvern Farmers Mkt., Warren Ave. & Roberts Rd. *Sat, 9 to 1.* 610-836-1391; GrowingRootsPartners.com.

Media Farmers Mkt., N. Edgemont St. *Sun, 10 to 2.* 215-733-9599; MediaFarmersMarket.com.

Newtown Square Farmers Mkt., Mostardi Nursery, 4033 West Chester Pk. *Wed, 2 to 6.* 610-353-1555; PRC.org.

Oxford Village Mkt., 3rd & Locust Sts. *Tues, noon to 5; Sat, 9 to 1.* 610-998-9494; DowntownOxfordPA.org.

Pete's Produce Farm, 1225 E. Street Rd., West Chester. *Mon–Sat, 9 to 6:30; Sun, holidays, 9 to 6.* 610-399-3711; PetesProduceFarm.com.

Phoenixville Farmers Mkt., 200 Mill St. *Sat, 9 to 1.* PhoenixvilleFarmersMarket.org.

Pottstown Farmers Mkt., 300 E. High St. *Thurs–Fri, noon to 7; Sat–Sun, 9 to 5.* 610-326-0900; PottstownFarmersMarket.com.

SIW Farmers Mkt., 4317 S. Creek Rd., Chadds Ford. *Daily, 9 to 6.* 610-388-7491; SIW-Vegetables.blogspot.com.

Swarthmore Farmers Mkt., 121 Park Ave. *Sat, 9:30 to 1:30.* 215-733-9599; SwarthmoreFarmersMarket.org.

Thornbury Farmers Mkt. & CSA, 1256 Thornbury Rd. *Thurs–Fri, noon to 6; Sat, 9–5; Sun, 11–5.* ThornburyFarmCSA.com.

Thornton Farmers Mkt., 330 Glen Mills Rd. *Sat, 10 to 1.* Facebook.com/ThorntonFarmersMarket.

West Chester Growers Mkt., Chestnut & Church Sts. *Sat, 9 to 1.* 610-436-9010; WestChesterGrowersMarket.com.

Westtown Amish Mkt., 1165 Wilmington Pk., West Chester. *Thurs, 9 to 6; Fri, 9 to 8; Sat, 8 to 4.* 610-492-5700; WestChesterAmishMarket.com.

day of friendly competition with those who share a passion for the arts ... and for golf. Benefits theater education programs. White Manor Country Club, 831 Providence Rd., Malvern. Registration, 10:30, shotgun start at noon. For tickets and to register, visit PeoplesLight.org.

OCTOBER 11

Wings And Wheels. Enjoy live music, great food, beer, luxury car test-drives, and a silent auction to support Wings for Success. Help steer women on their journey toward success and stability. American Helicopter Museum & Education Center, 1220 American Blvd., West Chester. 6 to 10. \$75. WingsForSuccess.org.

OCTOBER 13

28th Annual Dilworthtown Inn Crush Cancer Wine Festival. Wine event featuring more than 100 wines, craft beers, sumptuous fare, auctions, music and a car show. Benefits The



Abramson Cancer Center at Chester County Hospital and Neighborhood Health Hospice. 1390 Old Wilmington Pk., West Chester. Noon to 4. \$45–\$50. VIP tickets, \$115. 610-431-5329; ChesterCountyHospital.org.

OCTOBER 13

Ryerss Farm Country Brunch & Auction. An afternoon of country fun celebrating 131 years of caring for aged, abused or injured horses. Open bar, food stations, auctions and country music. Fundraiser at Radnor Hunt Club, 826 Providence Rd., Malvern. Noon to 3. \$95. Visit RyerssFarm.org for tickets.

OCTOBER 13

National Dog Show Charity Walk. Celebrity appearances, games, prizes, music, entertainment and fun. Benefits Philadelphia Ronald McDonald House and many local canine-related charities. Wilson Farm Park, 500 Lee Rd., Wayne. 9 to noon. \$20. NDS.NationalDogShow.org.



What Happens When
Artificial Intelligence
Realizes It's
Smarter than Humans?

Singularity 1.0

A New Novel by George H. Rothacker

MEET THE AUTHOR
at a Book Signing and Discussion

COMMUNITY ARTS CENTER

Wednesday, October 9, 5-7 PM

Refreshments

(Wear a Touch of Yellow)

Books for Purchase or Bring Your Own

414 Plush Mill Rd, Wallingford, PA • Info: 610.566.1713

Singularity 1.0 is also available in Kindle & Print at Amazon and Barnes & Nobel



OCTOBER 18
15th Annual Gravediggers' Ball. The annual fundraiser of the Friends of Laurel Hill and West Laurel Hill Cemeteries, national historic landmarks. Enjoy open bar, hors d'oeuvres and dinner stations, live music, raffles and auction items. Black-tie, costume or masquerade attire is requested. The Mütter Museum, 19 S. 22nd St., Philadelphia. 7 to midnight. \$250 and up. 215-228-8200; GravediggersBall.org.

OCTOBER 23
Chester County Futures "Harvest Dinner and Wine Tasting." Dinner, wine pairings and items for auction benefitting Chester County Futures, providing academic, mentoring and scholarships for disadvantaged youth. Waynesborough Historic House, 2049 Waynesborough Rd., Paoli. 6 pm. \$150. 610-314-3811; CCFutures.org.

OCTOBER 26
Chester County Historical Society's Second Annual Halloween Ball. The Spirits of Chester County invite you to CCHS for an evening of fun featuring a live auction, music, costume contest and open bar. Costumes encouraged. Benefits educational programming at CCHS. 225 N. High St., West Chester. 6:30 to 10:30. Tickets \$500 and up. 610-692-4800; Chester-CoHistorical.org.

NOVEMBER 2
Newlin Grist Mill Presents Tavern Night. You'll enjoy 18th-century food, drink and music by the fire with five sample-sized courses of food and drink based on period recipes. Benefits internship opportunities for students wishing to pursue a career in history, museums, archaeology. 219 S. Cheyney Rd., Glen Mills. 7 to 9:30. \$60. 610-459-2359; NewlinGristMill.org.

NOVEMBER 2
French & Pickering's 37th Annual Auction Party. Enjoy cocktails, auctions and delicious food. Benefits French & Pickering Creeks Conservation Trust. Stonewall Golf Club, Bulltown Rd., Elverson. 6 pm. Tickets \$125 and up. 610-933-7577; FrenchAndPickering.org.

NOVEMBER 2
Brandywine in Plaid—Celebrate the Harvest. Following the lead of Brandywine in White, this



is a new, more relaxed event where guests can wear their jeans, boots and flannels and meet at a Brandywine Valley area location. Benefits preservation of open space. Tickets available at BrandywineInPlaid.org.

NOVEMBER 7
Notable Kitchen Tour & Chef's Tastings. Each of the impressive kitchens in six private homes in the western suburbs from Gladwyne to Newtown Square will showcase a "notable" local chef offering a variety of samples of their cuisine for tasting by tour attendees. Benefits The Philadelphia Orchestra. 10 to 3. \$50. Visit their website for tickets, NotableKitchens.com.

GARDENS.....
OCTOBER 3–NOVEMBER 17
Longwood Gardens Presents Blooms & Bamboo: Chrysanthemum and Ikebana Sogetsu Artistry. This is a new display featuring masterworks of Ikebana, the Japanese art of flower arranging. 1001 Longwood Rd., Kennett Square. 9 to 6. \$12–\$30. 610-388-1000; LongwoodGardens.org.

MUSEUMS.....
THROUGH NOVEMBER 3
Brandywine River Museum of Art. Through Sept. 15, "N. C. Wyeth: New Perspectives;"

through Nov. 3, "Halloween Paintings of Peter Paone." 1 Hoffman's Mill Rd., Chadds Ford. Daily, 9:30 to 5. \$6–\$18. 610-388-2700; Brandywine.org.

THROUGH JANUARY 5, 2020
Winterthur Museum, Garden & Library. "Costuming *The Crown*;" "Hamilton & Burr: Who Wrote Their Stories?;" "Follies: Architectural Whimsy in the Garden;" 5105 Kennett Pk., Winterthur, DE. Tues–Sun, 10 to 5. \$15–\$30. 302-888-4600; Winterthur.org.

THROUGH APRIL 12, 2020
Delaware Art Museum. Through Feb. 2, "Structure & Spontaneity: The Clay Monoprints of Mitch Lyons." **Oct. 5–Apr. 12,** "Angela Fraleigh: Sound the Deep Waters." **Oct. 19–Jan. 26,** "Posing Beauty i African American Culture." 2301 Kentmere Pkwy., Wilmington. Wed, 10 to 4; Thurs, 10 to 8; Fri–Sun, 10 to 4. \$6–\$12, Sun, free. 302-571-9590; DelArt.org.

MUSIC & ENTERTAINMENT.....
See also: Fundraisers
OCTOBER 5, 18, NOVEMBER 2
WCU—Live! Oct. 5, Broadway Rox celebrates contemporary musicals; **Oct. 18,** Masters of Soul perform Motown and soul music; **Nov. 2,** virtuoso magician Jason Bishop. Emilie K. Asplundh Concert Hall, University Ave. & S.

High St., West Chester. 7:30 pm. \$15–\$22. 610-436-2266; WCUPa.edu/Live.



OCTOBER 12
Kennett Symphony Orchestra Opening Night Concert. "Lament to Triumph," featuring the music of Somers, Rachmaninoff and Tchaikovsky. Unionville High School, 750 Unionville Rd., Unionville. 7:30 pm. Visit website for tickets. 610-444-6363; KennettSymphony.org.

OCTOBER 12
Kennett Flash—10th Anniversary Concert. Bring lawn chairs and blankets, sit back and enjoy American Idol winner Taylor Hicks. Food trucks, beer and wine sales available. Anson B. Nixon Park, 405 N. Walnut Rd., Kennett Square. Gates open at 1, concert at 4. \$25–\$40. 484-732-8295; KennettFlash.org.

OCTOBER 13
Who Dunnit? A Murder Mystery Dinner at West Laurel Hill. "Once Bitten, Twice Dead," with cocktails, dinner and an interactive vampire murder mystery you're invited to help solve. Costumes welcome. 225 Belmont Ave., Bala Cynwyd. 5 pm. Tickets in advance, \$60. 610-668-9900; WestLaurelHill.com.

OCTOBER 15–NOVEMBER 1
Longwood Gardens Performance Series. Oct. 15, Flamenco Legends by Javier Limón—The Paco de Lucía Project; **Oct. 22,** Yumi Kurosawa with Special Guest Anubrata Chatterjee; **Oct. 29,** Nella; **Nov. 1,** Sebastian Heindl. 1001 Longwood Rd., Kennett Square. Check website for times and tickets, LongwoodGardens.org.



OCTOBER 20
Delaware County Symphony Concert. Featuring the music of Stanley Grill, Beethoven and Dvorak. Neumann University, Meagher

Elverson

Antique Show & Sale

Oct 26 & 27, 2019
Twin Valley High School

SATURDAY, 11 am to 5 pm
SUNDAY, 11 am to 4 pm
Admission per person: \$7.00
\$6.00 with this ad

Twin Valley High School
4897 North Twin Valley Rd.
Elverson, PA

CHESTER COUNTY ART ASSOCIATION
PRESENTS

the GREAT \$100

ART GRAB

160 amazing works of art
only \$100 each

FRIDAY, OCTOBER 11 • 6:00 - 8:00 P.M.
100 N. Bradford Ave., West Chester, PA 19382
610-696-5600 | www.chestercountyarts.org

A "Destination" Venue in Chester County

GREYSTONE HALL

West Chester, Pennsylvania
Book Now for
Holiday Events this December
Luncheons, Cocktails, Banquets, Theme Parties
Weekdays, Weekday Evenings & Weekends
and for near and future

Engagement, Anniversary & Reunion Celebrations
Weddings & Receptions

www.greystonehall.com
610-696-1722

Back For A Third Year on the East Coast
Greystone Hall & Colonial Playhouse Present

THE MANOR

A two-act play by Kathrine Bates
performed at Greystone Hall, West Chester

Tickets \$60 pp. including refreshments at Intermission
Purchase at www.colonialplayhouse.net/the-manor

ONLY 9 PERFORMANCES

Thurs, Fri, Sat Evenings	Nov 14 - 17	7 p.m.
Sat & Sun Matinees	Nov 16 & 17	2 p.m.
Fri & Sat Evenings	Nov 29 & 30	7 p.m.
Sat & Sunday Matinees	Nov 30 & Dec 1	2 p.m.

(Thanksgiving Weekend)
"A Saga of the rich & mighty in the grand tradition of *Dynasty*
with shades of Bronte's *'Wuthering Heights'*" **LA TIMES**

Theatre, One Neumann Dr., Aston. 3 pm. \$15. 610-879-7059; DCSMusic.org.

OCTOBER 24
Delaware Art Museum Performance Series Concert. Raye Jones Avery & Adagio with musical director Dennis Fortune. 2301 Kentmere Pkwy., Wilmington. 8 pm. \$25–\$35. 302-571-9590; DelArt.org.

OCTOBER 24–NOVEMBER 9
Uptown! Knauer Performing Arts Center. *Oct. 24*, Dueling Pianos; *Oct. 25*, Jazz Cocktail Hour–Funky Friday with Cedric Napoleon Quartet; *Oct. 31*, Rocky Horror Picture Show Sing-Along; *Nov. 9*, Sail On: The Beach Boys Tribute. 226 N. High St., West Chester. Check website for tickets and more listings. 610-356-2787; UptownWest-Chester.org.

OCTOBER 26–27
Chesco Pops Fall Concert Series—Halloween Magic! Soundtracks to spooky movies. *Oct. 26*, Fugett Middle School, 500 Ellis Ln., West Chester. 7 pm; *Oct. 27*, Phoenixville Area Middle School, 1330 S. Main St., 3 pm. \$15–\$20; children/students, free. Costumes encouraged; Maestro Gehring will entertain with magic tricks. 610-594-9178; ChescoPops.org.

OUTDOOR ACTIVITIES.....
OCTOBER 5
Main Line Animal Rescue Gran Fondo Cycling Event. Choose from four rides on country roads followed by lunch on MLARs 60-acre farm. Enjoy food, games, music and fun. Begins and ends at Pickering Meade Farm, 1149 Pike Springs Rd., Phoenixville. Reg., 6:15 am, first ride, 7:30, after-party, 10:45. \$95–\$105. MLARGranFondo.org.



OCTOBER 5
Philadelphia International Dragon Boat Festival. More than 140 dragon boat teams compete. Teams gather on the Schuylkill River in Fairmount Park, Philadelphia. 8 to 5:30. 610-642-2333; PhilaDragonBoatFestival.com.

OCTOBER 6
47th Annual Marshalton Triathlon. Bike, canoe and pace-walk at this family-friendly event with music, food and drink. Benefits West Bradford Fire Co. Rt. 162. Check-in, 7 am; race, 8. \$55. MarshaltonTriathlon.net.

OCTOBER 6
Pedal4Cam Ride ‘n’ Stride. Road bike and mountain bike options. Benefits the Cure4Cam Childhood Cancer Org. Eagleview Town Center, 540 Wellington Sq., Exton. Reg. 7:30 am, race at 8:30. \$25–\$40. Cure4Cam.org.

OCTOBER 13
2019 CCDSIG Buddy Walk and Family Run & Fun Day. The Chester County Down Syndrome Interest Group holds a 5k, Buddy Walk and Fun Run and Dash for kids. West Goshen Park, Five Points & Fern Hill Rds., West Chester. 8 to 2. \$10–\$30. CCDSIG.org/Buddy-Walk.

OCTOBER 19
Willistown Conservation Trust—Run-a-Muck & Countryside Bash. Run or walk along the 5k or 1+ mile trail. Enjoy live music, bonfire, wine, beer and country supper. Leashed dogs welcome. Donegal Farm, 2702 White Horse Rd., Berwyn. Gates open, 2:30 pm, race, 3:30. Register in adv., \$15–\$35. 610-353-2562; WCTrust.org.

OCTOBER 19
Natural Lands’ ChesLen Chase for Open Space. Kick up your heels for nature at this 10k, 5k, and 2-mile Fun Run-Walk. The fun continues with a post-race party. ChesLen Preserve, 1199 Cannery Rd., Coatesville. 11 to 2. \$15–\$35. 610-353-5587; NatLands.org.



OCTOBER 27
42nd Annual Radnor Run. A 5-mile timed running race, 1-mile walk/fun run and a health fair after the run. Benefits the American Lung Association. Radnor Township Building, Encke Park, 301 Iven Ave., Radnor. Reg. 7 am, race, 8:30. \$30–\$40. 800-LUNG-USA; Lung.org/RadnorRun.

NOVEMBER 2
2019 Philadelphia Heart Walk and Festival. A 5k walk that begins at Citizens Bank Park, 1 Citizens Bank Way, Philadelphia; festival follows. 8 am to noon. For info, 866-441-3686 or www2.Heart.org.

THEATER.....
THROUGH OCTOBER 20
Dot. See October Picks.

THROUGH OCTOBER 23
Stolen: The Musical. Bird-In-Hand Stage, 2760 Old Philadelphia Pk., Bird-in-Hand. \$17–\$38. Check website for times. 800-790-4069; Bird-in-Hand.com/Stage.

OCTOBER 2–27
Roald Dahl’s Matilda The Musical. Tony Award-winning play from the Royal Shakespeare Company and inspired by Roald Dahl. Media Theatre, 104 E. State St., Media. Check website for show times and tickets. 610-891-0100; MediaTheatre.org.

OCTOBER 4–20
Cabaret. The Resident Theatre Company presents the renowned musical, which earned 23 Tony Awards while on Broadway. Uptown! Knauer Performing Arts Center, 226 N. High St., West Chester. Check website for show times and tickets. RTCWC.org.

TOWNS, TALKS & TOURS.....
OCTOBER 4, 12, 17
First Fridays, Second Saturdays, Third Thursdays. *Oct. 4*, First Fridays: *Kennett Square Art Stroll*, 610-444-8188; HistoricKennettSquare.com. *Lancaster City*, 717-509-ARTS; VisitLancasterCity.com. *Oxford*, 610-998-9494; DowntownOxfordPA.org. *West Chester*, 610-738-3350; West-Chester.com. *Wilmington Art Loop*, 302-576-2135; ArtLoopWilmington.org.

Oct. 12, Second Saturday Arts Stroll: *Media*, 484-445-4161; MediaArtsCouncil.org.

Oct. 17, Third Thursday Malvern Stroll, Malvern-Business.com.

OCTOBER 4, NOVEMBER 1
Chadds Ford Historical Society Tavern Talks. Experience history with hands-on activities, food and drink tastings, demonstrations, and more. *Oct. 4*, “Very Superstitious;” *Nov. 1*, “The Art of the Book.” Barns Brinton House, 630 Baltimore Pk., Chadds Ford. 7 to 9. \$15–\$20. 610-388-7376; ChaddsFordHistory.org.

OCTOBER 5
79th Annual Chester County Day Tour. Celebrate the architecture of the southeast quadrant of Chester County. Visit homes and public landmarks in West Chester, Westtown, Glen Mills, Willistown, Malvern and Berwyn. 10 to 5. \$50. Boxed lunch, \$12, can be ordered online. \$100 VIP ticket. Benefits the Women’s Auxiliary’s upcoming pledge to Chester County Hospital. ChesterCountyDay.com.

OCTOBER 5–6, 12–13
Berks County Wine Trail Artisan Cheese & Wine Pairing Weekend. Self-guided tour of 11 wineries offering pairings of artisan cheeses with locally produced wines of the Berks County region. Noon to 5. \$15–\$20. For map and to register, BerksCountyWine-Trail.com.



OCTOBER 10
Town Tours & Village Walks Supper Lecture & Armchair Tour—Historic Sugar-

town. Explore the 19th-Century crossroads village, protected under a historic district and remaining largely untouched by modern development. A buffet supper and drinks will be provided. Historic Yellow Springs, 1685 Art School Rd., Chester Springs. 6 to 7:30. \$20. 484-873-2779; ChesCo.org/Planning/TownTours.

OCTOBER 17
West Chester Historic Preservation Awards Ceremony. Raises awareness of West Chester’s historic architectural character. Winners are announced at the Chester County Historical Society, 225 N. High St., West Chester. Light buffet with wine and beer. 5:30 pm. \$25. DowntownWestChester.com.

OCTOBER 18–19
Sugartown at Sundown Lantern Tours. Take a guided tour through the village by lantern and hear chilling tales from the village’s history. 273 Boot Rd., Malvern. One-hour tours from 6 pm, last one at 8:30. \$10–\$12. 610-640-2667; HistoricSugartown.org.



OCTOBER 28
Chester County Community Foundation’s Legacy Awards Celebration. Open to all community members and providing an overview of the Foundation’s Inspire, Celebrate, Grow campaign and introducing the 2019 Legacy Award winner. Uptown! Knauer Performing Arts Center, 226 N. High St., West Chester. 5 pm. Free. 610-696-8211; ChescoCF.org. ♦

Stay in the know with everything going on in *County Lines* country. Sign up for our Events Newsletter (sent twice monthly) at Newsletter@ValleyDel.com

Send a description of your activity to Info@ValleyDel.com by the first of the month preceding publication.
For more events visit:
CountyLinesMagazine.com

17th ANNUAL CHILI COOK OFF
ROTARY CLUB OF WEST CHESTER

Who makes the best darn chili? YOU BE THE JUDGE!

10/13/19

Gates open at 10:30am. Chili served at noon. Rain or Shine! No pets permitted.

- ✓ 50+ Chili Teams
- ✓ 30 Food, Business & Craft Vendors
- ✓ Family Fun Center

WRISTBANDS ON SALE NOW ON OUR WEBSITE.

#WCChiliCookoff

www.WestChesterChiliCookoff.com

R.T.C. Resident Theatre Company PRESENTS:

2019–2020 SEASON

CABARET
October 4–20, 2019

Into the WOODS
December 13–29, 2019

VANYA SONIA & MASHA SPIKE
MARCH 27 - APRIL 12, 2020

WWW.RTCWC.ORG | \$25–\$62
PERFORMANCES @ UPTOWN! KNAUER PERFORMING ARTS CENTER | SUBSCRIPTIONS & SENIOR/GROUP DISCOUNTS AVAILABLE
NY THEATRE IN WEST CHESTER!

Chester Springs-based Author Sheds Light on Her Next Chapter ... Over Cocktails and Laughter

Beth Wilson-Parentice's debut book—*You Glow Girl! Rise to Your Best Life and Shine*—is less a story and more a roadmap to igniting your fire and living your passion.

After building a multi-million dollar beverage company from scratch in her kitchen and ending a toxic relationship, Beth documents her struggles and accomplishments in a book brimming with insights any reader can benefit from.



Not just an autobiography, *You Glow Girl* is an invitation to face challenges, embrace successes and celebrate who you are—interspersed with tips, tools and affirmations at the end of each chapter.

Inspired by Rachel Hollis—New York Times best-selling author of *Girl, Wash Your Face*—and armed with the support of women going through their own personal struggles, Beth found

herself with a story to share. She put her pen to paper and never looked back.

“It was my mission to write this book, and if I can help one woman by sharing my stories, then my mission is accomplished,” she said.

We’ll drink to that!

~Shelly Gill



Learn more about Beth and *You Glow Girl!* at her website: BethWilsonParentice.com.



We recently sat down with **Beth Wilson-Parentice** to learn more about her and her debut novel ...

Where are you from?

I was born and raised in Connecticut, but have lived in Chester Springs for the past 17 years.

What’s your favorite hometown hangout?

In the book’s acknowledgements, I give thanks to my “Ron’s Crew” at Ron’s Original Bar and Grill in Exton. The friends I met at Ron’s became like family and supported me on this journey—every step of the way.

What was your process for writing this book?

I found myself writing late at night and into the morning when my house was quiet, peaceful and my phone wasn’t blowing up. Over time, it became an automatic process. I’d often just lose track of time. I knew I was destined to share my story.

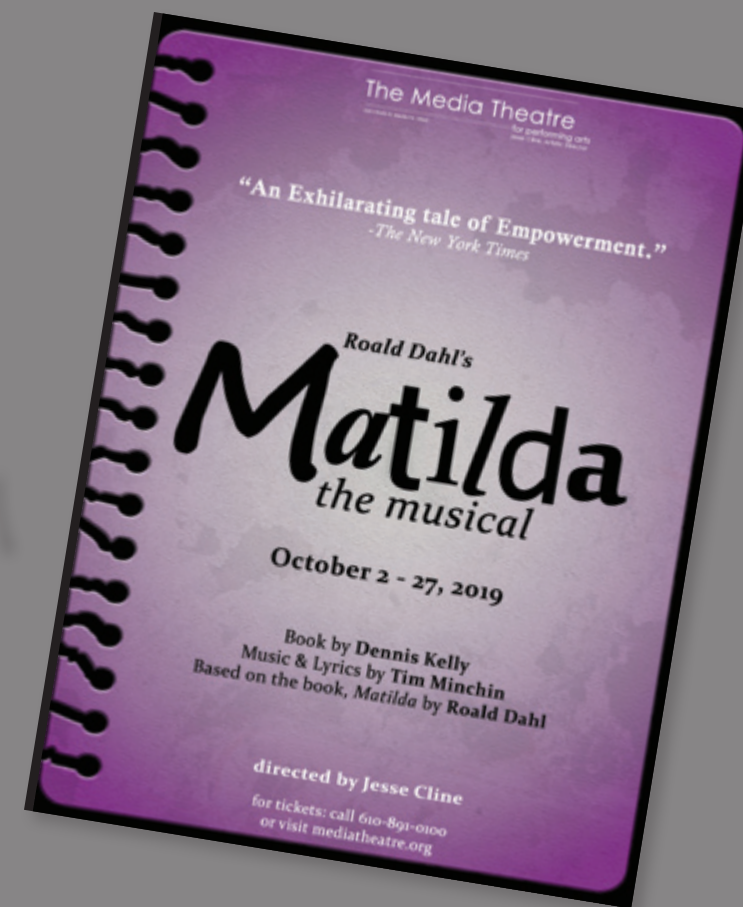
What’s next?

I’m excited to tour and meet my readers across the country. I also have plans to organize retreats that unite women from around the world for fun, inspiration and maybe even throw some great cocktails into the mix!

THEATER SPOTLIGHT

Matilda: The Musical

THE INSPIRING TALE OF A YOUNG GIRL WHO SHOWS THAT EVERYONE HAS THE POWER TO CHANGE THEIR STORY.



THE MEDIA THEATRE KICKS OFF THE 2019–2020 season with the imaginative and girl-powered show *Matilda: The Musical!* Based on the 1988 children’s book by Roald Dahl and adapted by Dennis Kelly, *Matilda* has won 47 awards internationally, including 7 Olivier Awards and 5 Tony Awards.

The story follows Matilda, a mind-bogglingly intelligent little girl with psychokinetic powers. Unloved by her cruel parents, Matilda manages to find an ally and friend in her loveable teacher, aptly named Miss Honey.

But life at Matilda’s school, Cruncheon Hall, isn’t all smooth sailing—Miss Trunchbull, the mean headmistress, hates children and loves thinking of new ways to punish the rule-breakers. Yet Matilda’s courage and cleverness may be what’s needed to start a revolution.

Two Media Theatre students, Sydney Amos and Zoe Nesbitt, take on the role of Matilda. Kelly Briggs, who performed in the original Broadway productions of *Les Miserables* and *Cats*, plays the part of Miss Trunchbull, with Megan Ruggles making her Media debut as Miss Honey.

More Media Theatre veterans include JP Dunphy, Deborah Lynn Meier and Tamara Anderson, who play Mr. Wormwood, Mrs.

Wormwood and Miss Phelps, respectively. And of course there are the kiddos—over 20 children join the cast playing kids of all ages.

Jesse Cline, Media Theatre’s Artistic Director, shapes this upbeat musical with choreography by Christian Ryan. The high-energy score is performed by a live orchestra directed by Ben Kapilow.

The only professional theater in Delaware County, The Media Theatre brings the excitement of big city performances to a small town stage, offering musical productions, concerts, children’s programs and summer camps.

Reserve your tickets now to this lively, family-friendly musical production of *Matilda: The Musical!* ♦

~ Mercedes Thomas

IF YOU GO

Where: The Media Theatre
104 E. State St., Media

When: October 2–27

Tickets: 610-891-0100; MediaTheatre.org.

Coming Soon: *Elf the Musical*, Nov. 13–Jan. 12



Canoeing on the Brandywine River



Along the trails of the Brandywine Creek Greenway



Brook Township to the Christina River in the City of Wilmington. The Greenway and its network of parks and trails form the western limit of the Circuit Trails, a regional trail network of the greater Philadelphia region.

The vision of the Brandywine Creek Greenway is to build healthier, more sustainable communities by emphasizing the natural and cultural resources of the area. The project is also designed to preserve and protect the Brandywine River and create connections among open space, parks, river access points and area attractions.

In the coming year, the Brandywine Conservancy is working to expand the Brandywine Creek Greenway app to add over 100 additional parks and preserves in New Castle County and the City of Wilmington.

So stay tuned and enjoy the great outdoors this fall! ♦

Download the free Brandywine Creek Greenway app on the App Store and Google Play or visit Brandywine.org/App.



The Greenway's trails form the western limit of the Circuit Trails

Increase your “App-etite” for the Outdoors with the Brandywine Creek Greenway App

Nicole Kindbeiter

DISCOVER NEW WAYS TO HAVE tons of fun in Chester County and the Greater Brandywine River Valley with a new mobile app designed by the Brandywine Conservancy. Free to download on both Apple and Android operating systems, the Brandywine Creek Greenway app connects you to more than 100 publicly accessible parks and preserves within Chester and Delaware Counties.

Using your phone's GPS-location, the app lets you identify the closest park or preserve to your



current location, and it highlights the recreational options up and down the Brandywine River. You can also use the app to filter your favorite type of activity—canoeing, hiking, mountain biking, sport fields, playgrounds, birding, non-motorized boating and horseback riding.

From the Harvey Run Trail in Chadds Ford to the Struble Lake Recreation Area in Honey Brook, each location on the app shows a brief description, a scrollable photo gallery, GPS-enabled directions, tips and more. All you need to have outdoor fun!

So where is the Brandywine Creek Greenway? It stretches from the Pennsylvania Highlands in Honey

Sometimes simply enjoying the garden is the best way to learn and grow. PHOTO BY LISA ROPER.

Always Keep Growing

Chris Fehlhaber, Chanticleer Garden

GARDENING FOR PERSONAL GROWTH: AN ESSAY



As we grow as gardeners, we discover this is not just a personal pursuit. Other species benefit from gardening. PHOTO BY CHRIS FEHLHABER



Gardening is a communal activity, so ask your friends for new ideas. PHOTO BY LISA ROPER

IF A SINGLE WORD WERE TO EXEMPLIFY GARDENING, it may be growth. From the annual cycle of renewal and decay to the long-term growth of species over time, gardens are growth incarnate.

A comparable exemplar is us, humans. Like the garden, we move through the seasons of life, growing and changing at various rates, responding to our conditions. Hopefully, over time, we age into something distinct.

It's no coincidence, then, that many find gardening such a fulfilling practice—it mirrors the human experience.

At Chanticleer Garden both staff and guests are encouraged to engage with the garden in their own personal way, as everyone approaches life—and gardening—differently. Despite these differences, we are united by the constant of growth.

Although some plants seem to continue to grow—physically—virtually indefinitely, we do not. This is not to say our growth is complete—it's simply manifested in other, non-physical, ways—notably through learning. And while we may physically “peak” relatively early in life, knowledge, experience and subsequent wisdom continue to be garnered through the years, should we be open to them.

Anyone who practices a special skill knows this well as they practice, fail, refine and master the new talent over time. Gardeners are particularly well acquainted with this reality, and the best get better with age because of the vast knowledge and experience they gather from a lifetime of partnering with plants.



Not all gardening gets you dirty. Flower arranging is a chance to interact with plants in a different, artistic way. PHOTO BY LISA ROPER.

For many, gardening is a practice discovered later in life, an activity for when they finally have the time, once the kids are grown or when retirement begins. As a result, it's common for people to feel they're late to the game.

Yet if gardening were a race with a finish line, this may be true. Fortunately it's not. Gardening is an ongoing and ever-evolving practice. The only constraints are those you set yourself. Endless opportunities for growth abound as we each approach this pursuit in our own personally enriching way.

Growth is at the heart of what gardening accomplishes for both plants and people. As we say, good gardens are about the plants, great gardens are about the people.

So how is growth as a gardener achieved? That depends on your approach and desire, since gardening is essentially a personal endeavor. To know plants is to grow, and more often than not, kill *lots* of plants.

We all come to know plants by interacting with them intimately, planting and tending to their needs as we would a child. Similarly we have the privilege of watching them grow and thrive, and in the case of herbaceous perennials and woody perennial plants that return year after year, become increasingly independent over time.

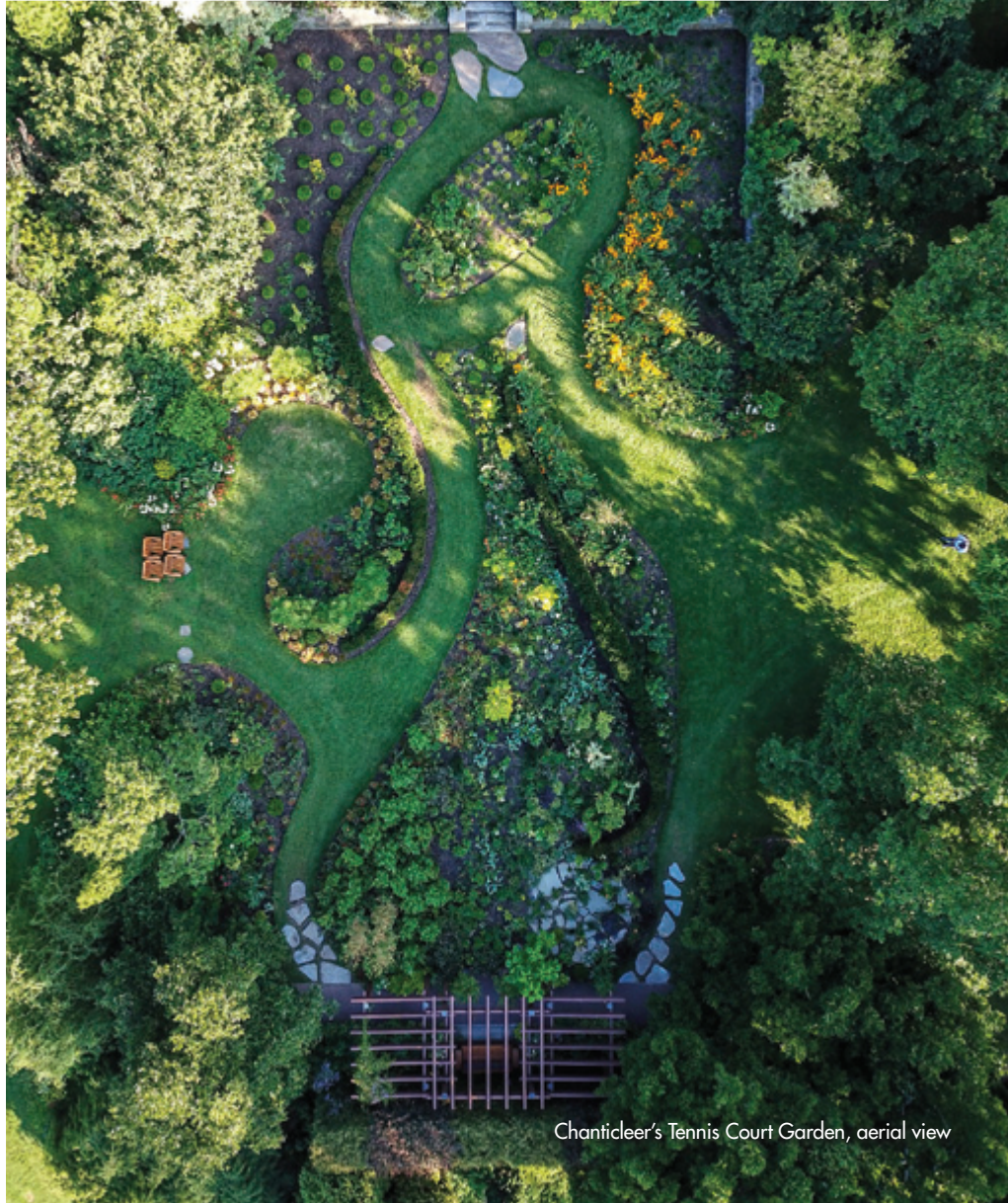
The important thing is to try, fail and try, try again. Many of us fear the loss of a plant because we're caring people, but some loss is okay. We must acknowledge that loss is inevitable, especially in the garden. When this occurs, we're fortunate to be able to rely on fellow gardeners who comprise a generous and enthusiastic group ready to offer advice and support from their own experiences.

Growth as a gardener may come from the very traditional avenue of enrolling in school or a class. Local gardens, arboreta and garden centers offer a wide range of classes for every level of gardener.

Through its collaborations with other area organizations, Chanticleer offers classes on gardening techniques through both the Pennsylvania Horticultural

Society and Mainline School Night. These courses, designed to educate and inspire, cover a variety of topics from native plants, small trees and shrubs for the home landscape to late season fall gardening and maintenance.

If growth is in part a response to surrounding conditions, then those of us who live in the Delaware Valley are better primed for growth than anywhere else in the United States. Philadelphia is America's Garden Capital with over 30 public gardens within 30 miles of the city, including Chanticleer, Jenkins Arboretum, Tyler Arboretum, Scott Arboretum, and of course, Longwood Gardens. Like the plants they contain, each garden is unique and diverse, offering a tremendous variety of experiences and learning opportunities for local gardeners.



Chanticleer's Tennis Court Garden, aerial view

At local gardens staff members are encouraged to constantly strive to learn, grow and improve as gardeners. This same enthusiasm is transferred to visitors who take inspiration from the public gardens to make their personal horticultural dreams a reality.

A classic adage of gardeners is the best time to do something is when you're thinking about it—so start now! Whether you're a seasoned gardener or just getting started, give gardening a try and start today.

There are few things more grounding and gratifying than connecting with the world around you. Plant lots, fail often and strive to continue to learn. We are fortunate to be in America's Garden Capital so visit gardens, try something new and always keep growing. ♦

Chanticleer is a dynamic, ever-changing garden. The staff welcomes guests to visit, observe the garden frequently throughout the seasons, ask questions and be inspired. To learn more about classes, visit ChanticleerGarden.org. Chanticleer is open until November 3rd, 2019, Wed.-Sun., 10 a.m. to 5 p.m. and is located at 786 Church Rd., Wayne.



The Chanticleer Guest Gardener and Internship programs give young horticulturists from around the world the opportunity to come to Chanticleer and grow their skill set. PHOTO BY LISA ROPER.

Specializing in Window Treatments, Home Decor & Interior Design

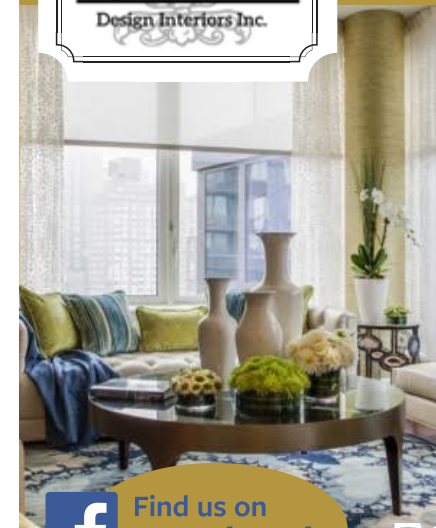
WWW.HERITAGEDESIGNINTERIORS.COM



RETAIL BOUTIQUE & WINDOW DESIGN STUDIO

1064 East Main St. (Rt 23)
Monday - Friday 10 - 5

New Holland, PA
Saturday 10 - 2



717.354.2233



Valances Bedding Draperies Pottery Cornices Area Rugs Sheers Furniture Blinds Wall Coverings Shades Artwork Shutters Reupholstery Mirrors Accessories Floral Designs

Do Your Kitchen Cabinets
NEED A FACELIFT?



**We'll transform
your kitchen in
1 week or less.**

**SAVE
THOUSANDS**



Tom & Maria Roberts

Reveal Your New Kitchen In 5-7 Days

No Brush Strokes - Guaranteed

Professionally Sprayed Finish

2 Coats Primer, 3 Coats Paint & 2 Coats Seal

It's super easy to get started

Just text a few pics to 484-366-2221

Book by OCT. 13 : Book by OCT. 20 : Book by OCT. 27
Save \$200 : Save \$100 : Save \$50

SALVAGED FURNITURE COMPANY - 484-366-2221

With this coupon. Offer valid with signed contract.
Not valid with other offers or prior services. Expires

SALVAGED FURNITURE CO.

Text Pictures to: **484-366-2221**

Email Pictures to: salvagedfc@mail.com

What's Your **Style?**



**Let Madsen
Help You
Find It.**

Make remodeling easier with Madsen, your design professionals and Waypoint Cabinetry offering beauty and function for any room in your home.

- Elegant Custom Kitchens, Bathrooms & Built-ins
- Exquisite Designs
- Exceptional Service & Installations



PA 17217

2901 Springfield Road, Broomall • 610-356-4800
www.MadsenKitchensAndBathrooms.com

Showroom: Mon.-Fri. 9 to 5pm • Sat. 9 to 3pm
Evening hours by appointment only

MADSEN
KITCHENS & BATHROOMS
Exceptional Service and Installations
for Over 75 Years

Lagers, the King of Beer

Ethan Buckman

DISCOVER THE BRAVE NEW WORLD
OF CRAFT LAGERS—MUCH MORE
THAN MERE PARTY BEERS.

In today's market—fueled by flavors often derived from atypical and non-traditional ingredients—the average beer drinker seems to view lagers as outdated at best, but more commonly, entirely undesirable. If you're one of these consumers, brewers across the globe beg you to reconsider.

Some say this inherently drinkable beer—with its sweeter, smoother, crisp taste—is actually a gateway to the wide world of craft beer.

KNOW YOUR LAGERS

Let's start from the beginning. Lager is not just the beer you're picturing right now. Yes, it is the most widely consumed and commercially available beer. Yet those fizzy little nothings named "lite" and the mega-brewers' brands don't begin to scratch the surface of what this beer can be.

The term lager is incredibly broad, covering a family of beers—ranging from pale (helles, pilsner) to amber (marzen, bock) to dark (dunkel, doppelbock and more)—rather than a single type. This term typically refers to two things: 1) the family of bottom fermenting yeast used to make these beers, and 2) the essential cold

storage technique used to create the clean flavors and crisp finishes the entire family of beer is known and appreciated for.

In short, any style of beer brewed with this distinct type of bottom fermenting yeast at cooler temperatures is a lager.

Lagers (which, by the way, means store-room in German) were first developed in Germany, where brewers in the Middle Ages discovered that beers left to ferment in cooler temperatures had a more refreshing flavor and a longer shelf life, both of which were good for business.

Over time brewers selected the vessels that made the best beer and used those again. Unknowingly, this recycling produced a yeast inside those vessels that created cleaner and cleaner flavors that work best at colder fermentation temperatures.

By the time the science of microbiology developed, the yeast that was observed living in the cool cellars and caves surrounding those old German breweries was totally distinct from the yeast found in breweries that preferred warmer fermentation.

Typically, lagers also undergo an extended cold aging process (conveniently called lagering) but this isn't always the case. As American brewers delve further

into the weird world of pre-Prohibition brewing (a topic we don't have near enough space to go into here) and more rustic styles of German-inspired beer, that cold storage process seems to be less mandatory.

The key thing to remember here is that lager doesn't represent a static beer style, but a family of yeasts and brewing techniques used to make an incredibly diverse portfolio of beers. Think of it like a type of cuisine: Italian food doesn't mean only spaghetti and meatballs ... or even just red sauce.

LAGERS TO LOVE

The beers we all know as ubiquitous—the pale mass-produced lagers—are loosely based on the Bavarian helles (pale) lager or the German style pilsner. These two related styles represent the bulk of lagers produced all around the world. But the good versions have so much more to offer.

A good helles (like Sly Fox's Helles Golden Lager) is complex, expressing a wide variety of malt-derived flavors all at once, with a crisp finish and firm but smooth bitterness. Pilsners (like the nearly ubiquitous Prima Pils from Victory, with



Sight glass of a beer fermenter



Slow pour method creates a big head



Stickman's The Hills Are Alive Helles Lager



Sly Fox's Helles Golden Lager



Victory Brewing Company's Prima Pils

IN A WORLD INUNDATED WITH HAZE AND GIMMICK, the lager remains king. Although some devout craft drinkers may sneer at the mention of lagers, the macro breweries, which brew primarily lagers, continue to lose more beer to waste in a day than the average craft brewery will produce in a year. It's a fact that lagers are drunk widely in the U.S. and around the world.



Stickman's Baltic Porter, Nuclear Option (middle)



The look of a classic, refreshing lager

a picture of hops on the label) are often as hop-driven as the modern IPA, but showing off more delicate German hops that lean earthy and floral, instead of piney and citrusy.

The classic Munich dunkel pours a light brown and has flavor notes that would remind most drinkers of brown ales, but with the refined finish and more delicate mouth feel that made you reach for the lager in the first place.

Kellerbiers pour cloudy and often have “doughy” notes and even a little funk. Bocks are often sweet, hoppy and incredibly high in alcohol. At Stickman, we're particularly proud of our Baltic Porter, a jet-black lager in the bock family that was originally brewed as a German response to the Russian Imperial Stout.

As I said, there are lots of lagers to love.

LAGER QUEST

It's the opinion of almost every professional brewer that making a good lager—especially a pale lager—is the most challenging thing you can do in a brewery. Plus it takes more time and thus can drive up costs.

Brewers strive for the lean and distinct flavors that are the hallmark of the style. Typically there isn't much to hide behind—the residual sugar, fruit, adjuncts (unmalted grains or grain products used in brewing that supplement the main mash ingredient) or dry hops typical of other beers. As a result, flaws that would be unnoticed in another beer come front and center in lagers.

It should be noted that this small margin for error also applies to the guys making beers like Budweiser and PBR. Think what you will about the end product—where the massive scale and cheaper ingredients allow a lower-cost brew—it takes a lot of skill to make a beer that tastes exactly the same every time.

To summarize, the term lager is incredibly broad and encompasses a huge variety of brewing techniques, styles and flavor profiles. Consequently there's no simple way to describe what beer to buy, what flavor to expect, what food to pair with your beer. But that's what is so fun about drinking lagers!

Lagers are beautiful, complex and often the purest expressions of what beer can be. Try them for yourself and decide.

Cheers! ♦

Ethan Buckman started brewing at age 18 when he turned his college dorm room into a speakeasy. He's been working as a brewer for ten years, brewing for several breweries in Pennsylvania and Oklahoma, along with spending time as a wine maker in South Jersey. He's currently the head brewer and co-owner of Stickman Brews, headquartered in Royersford, with a new-ish location in Chester Springs. StickmanBrews.com.





WALTON HOME



Kitchens | Baths | Interiors
lizwaltonhome.com | 215.510.8443

IRON HILL BREWERY & RESTAURANT



A FEAST FOR A FEST.

NOW THRU OKTOBER 17



130 East Bridge Street Phoenixville, PA 19460 610 983.9333 www.ironhillbrewery.com

Phoenixville: DAWN TO DUSK

Carol Metzker

JOG, MEANDER OR BIKE UP PHOENIXVILLE'S BRIDGE STREET.
IT'S HOPPING EVERYWHERE YOU LOOK.

YOUNG PROFESSIONALS AND EMPTY NESTERS ARE flocking to Phoenixville because of the town's easy lifestyle. Millennials are scaling the climbing wall at The Point, enjoying car-free pub crawls and chilling at the annual Phoenixville VegFest.

No longer flying south to escape snow shovels and summer lawnmowers, retirees are staying put near family and friends in Phoenix Village and picking up novels at the new book store.

They come for fun. They stay, say some, because of each other. The mix of generations is creating a strong community spirit.

STARTING OUT

To experience Phoenixville's fun from different perspectives, my 20-something-year-old companion and I (admittedly around double that) parked the car and started walking.

Our first stop: local favorite **Steel City Coffee House & Brewery**. Our fellow coffee drinkers at the café included a young man clicking away at his laptop, parents with strollers and older shoppers taking a break.

I asked co-owner Laura Vernola which features attract younger and older patrons. Was it the handcrafted food, including a shelf of vegan baked goodies? Its third wave coffee with artisanal sourcing, roasting and blending? The new in-house nano-brewed beer (think micro-micro-brewed) and live entertainment ranging from a Philadelphia Main Line Ukulele Group concert to Sunday afternoon poetry slam?

"Both groups say it's the community aspect," she said. "They like that Steel City is a community hub for every generation."

Besides the news that Steel City is no longer BYOB—now serving their own Steel Mill Stout, Maple Springs Vineyard wines and Manatawny Still Works spirits—the coffeehouse and brewery has mega plans for a Collegeville location associated with Ursinus College. Still an artistic community hub, Phoenixville will be the smaller satellite site.

SIGNS OF THE TIME

As we strolled we continued window shopping and stopping whenever something caught our eye or tempted our tastebuds.



Phoenix Village



Steel City Coffee House & Brewery



Reads & Company Bookshop



Vintner's Table

Sadly, we were too early for a show at the **Colonial Theater**.

The new **Reads & Company Bookshop** drew us in with their sidewalk sign, "A Day Without Books is Like ... Just Kidding! We have no idea." The curated collection of books for sale was as divine as the atmosphere—ornate ceiling, sensational lighting and, at the back, a space where the young at heart can sit inside a rocket ship to get lost in a book.

Down the street, the chalkboard sign at the door of **Vintner's Table**, "Wine and Gelato," had me at the get-go. What kind of wine does go with gelato?

Inside, the shop's marble counter, long wooden tables and white brick fireplace that could all have been in Tuscany left me lingering. The hazelnut gelato imported from Italy—a delight to both of us—and the lure of pairing events such as cannoli, gelato or cupcakes and wine caused a return visit.

This tasting room was opened in January by the Folino Estate Winery, a vineyard and restaurant in Berks County owned by the Folino family. The answer to the wine and gelato question, by the way is ... any kind you like, but Vintner's Table's recommendation is sparkling red or dolce bianco.

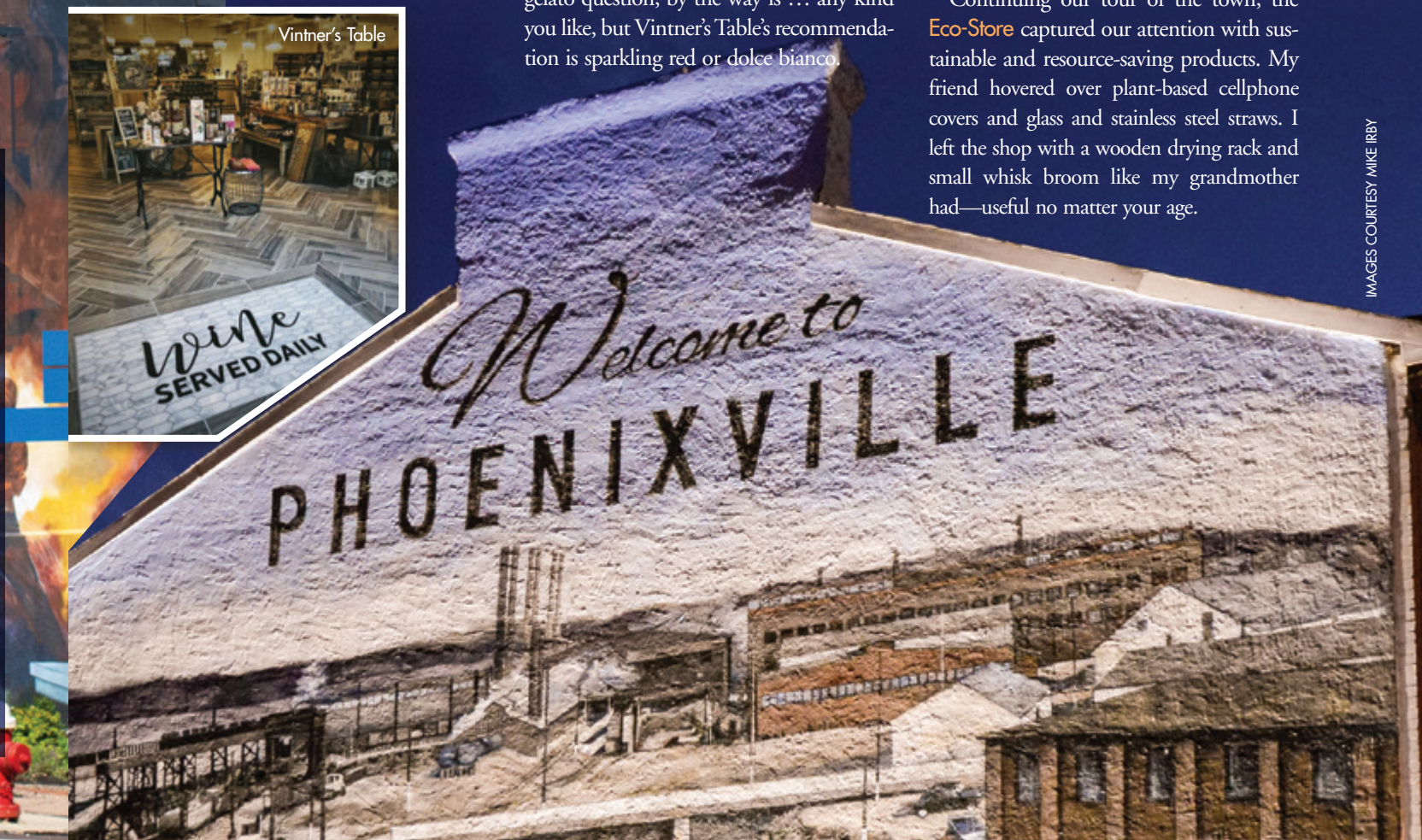
GOOD LIVING

Offering quick, easy access between home and shops, services, restaurants and bars are Phoenixville's new luxury apartments. Young professionals working from home or shared offices at **WorkSpace** on Bridge Street and older jetsetters who need access to larger cities without living in one can choose from **The Point at Phoenixville** or **Phoenix Village**.

The Point at Phoenixville, formerly Riverworks, offers amenities coveted by both age groups: dog spa, work-out room, pool, grilling stations and more. What they don't have inside the complex—and they're not missing much—is accessible by foot at the center of town just minutes away.

Phoenix Village boasts of residents ages 21 to 80+. One step out its front door and they're on Bridge Street where umpteen awesome options for food and entertainment await. On the other hand, staying at home there is fun—pool parties and popular, holiday ugly sweater contests bring together multi-generational residents who have forged strong friendships.

Continuing our tour of the town, the **Eco-Store** captured our attention with sustainable and resource-saving products. My friend hovered over plant-based cellphone covers and glass and stainless steel straws. I left the shop with a wooden drying rack and small whisk broom like my grandmother had—useful no matter your age.





Sedona Taphouse



Majolica

DAWN, DUSK AND MIDNIGHT

What might be Phoenixville's most talked about attribute is its vast list of places to imbibe. There are restaurants and bars to meet anyone's taste from breakfast to mid-night snacks.

We chose a spot at one of the newer additions to the scene, **Sedona Taphouse**, and headed for the deck overlooking Bridge Street. Packed on weekends, it has an outdoor bar, two flat-screen televisions and fire pits to light up cool nights.

From the Southwest-inspired menu, I selected a seafood and avocado sandwich and bright pink cactus lemonade. My com-

panion dug into the Beyond Burger with all the trimmings on a gluten-free bun, which she said was definitely "on point" as the best veggie burger she'd had. She also tried a \$2 four-ounce beer—perfect for light lunches or when sampling a few. It was thumbs up for Lawson's Finest Liquids' Sips of Sunshine, a slightly fruity, slightly tangy double IPA.

Long after morning larks have turned in and families playing with giant Jenga blocks have gone home, night owls are at **Bistro on Bridge**. At 10 p.m. or later, take the staircase past the tap handle-chandelier to the **Analog Room**, where the garage door opens to the outdoor rooftop bar. Its parked

vintage VW bus—whose journey by crane to the building top created a buzz—might no longer roll but it still rocks. Now the 20s and 30s crowds pick up canned beer from the bus, kick back at picnic tables and listen to live music or tunes from a vinyl collection once treasured by boomers.

AND OLD FAVORITES

Every trip to Phoenixville should include stops at old favorites as well as the latest things—that's what keeps folks coming back for more.

A must stop before its December 7 closing this year is beloved **Majolica**, the place that started the restaurant renaissance in Phoenixville about 15 years ago. Chef/owner Andrew Deery is hanging up his apron, so make sure to have a last meal there. Or a first, if you haven't had the pleasure.

Another early mainstay includes a branch of **Iron Hill Brewery** at the opposite end of Bridge Street from Majolica. Iron Hill was among the first spots to grab a beer in this town, now so well known for topping the national charts with breweries per capita.

And for an authentic Irish pub experience, head for **Molly Maguire's**—one of the first authentic Irish pubs in the area. You'll find three floors and three patios filled with good cheer—great food, full bar, plenty of craft beer—even when it's not St. Patrick's Day.

And for your chocolate fix, **Bridge Street Chocolates** has gourmet goodies galore.

Whether you're a millennial or a boomer and your quest is for hot coffee and croissants at dawn or cool open-mic jazz and cold brew at dusk at a place that's brand new or an old favorite, the town named after the firebird is soaring. ♦

For more on Phoenixville, check out PhoenixvilleFirst.org.

PHOTOS BY MERCEDES THOMAS



Molly Maguire's

Whet Your Whistle in Phoenixville

Come thirsty and often to Phoenixville, and visit its extraordinary variety of breweries, taprooms, bottleshops, distilleries and more. The range of choices is staggering ... and enticing. We took a look and found a few places of note ... just to get you started.

BREWERIES

Crowded Castle Brewing Company – Check out their quality craft beers brewed on-site, along with ciders, wine and craft liqueurs made in Pennsylvania. Their Oktoberfest Märzen is a hit and perfect for the season. 240-242 Bridge St. CrowdedCastle.com.

Iron Hill Brewery – It's that time of year ... for Pumpkin Ale ... and Hipster IPA. Or try the Philly Special IPA paired with Philly Cheesesteak Egg Rolls. Does it get any better or more local? 130 Bridge St. IronHillBrewery.com.

Rebel Hill – While they focus on IPA, saison and stout, they appreciate and brew all styles. On the menu: Time Rider, a West Coast-style IPA; The Anniversary, an imperial chocolate stout; and Human Qualities, a pink guava sour IPA. 420 Schuylkill Rd. RebelHillBrewing.com.

Root Down Brewing Company – A really cool space serving great beer and great food, plus wine and ciders. Try the award-winning Bine IPA, Hoppy Digital unfiltered pale ale, and Grit, an American grassroots lager. Cheers! 1 N. Main St. RootDownBrewing.com.

Sly Fox Brewing Company – It's all about the beer here, and they've crafted more than 100 varieties since 1995. Try Pikeland Pils, a German-style pilsner; O'Reilly's Stout, an Irish-style dry stout; or Rt. 113 IPA, an India pale ale. 520 Kinberton Rd. SlyFoxBeer.com.

Stable 12 Brewery – Enjoy a pint or grab a flight with one of these: Stable Hand, a blend of fresh kettle sour with saison, or the new "It's Always Sunny in Philadelphia"-themed beer and New England-styled IPA, called Dayman. 368 Bridge St. Stable12.com.

Steel City Coffee House & Brewery – Their new nano-brews are a steady rotation of three varieties, some incorporating their renowned coffee. Also

serving Maple Springs Vineyard wines and Manatawny Still Works whiskey, gin and vodka. 203 Bridge St. SteelCityCoffeeHouse.com.

TAPROOMS, BOTTLESHOPS, DISTILLERIES & MORE

Bistro on Bridge – Their "Crafty Draft List" not only carries a diverse selection of craft beers, but an assortment of wines and cocktails on draft as well. The Analog Room is a funky roof-top beer garden overlooking the heart of downtown. 208-212 Bridge St. BistroOnBridge.com.

The Foodery – Lots of bottled beer as well as 17 beer tap lines with "Pegas" Growler fillers, two draft wine lines, a nitro beer line, nitro coffee line and draft kombucha line. 325 Bridge St. FooderyBeer.com.

Molly Maguire's Irish Restaurant & Pub – Their Draft Board has rotating seasonals as well as Dogfish 60 Minute IPA, Harp Lager, Magners Irish Cider and more. 197 Bridge St. MollyMaguiresPhoenixville.com.

Rec Room – One of the locations for Conshohocken Brewing Co., now pouring: Blood Money Blood Orange IPA, Puddlers Row Extra Special Bitter and Sly Fox saison Vos to name just a few. 230 Bridge St. ConshohockenBrewing.com/RecRoomMain.

Sedona Taphouse – Extensive craft beer lineup, beers on tap, plus wine, spirits and food at this new addition. Current draft list includes Mango Cart Fruit Beer, Poplar Pils German Pilsner and Pacifico Clara American Lager. 131 Bridge St. SedonaTaphouse.com.

Bluebird Distilling – The main location and working distillery plus cocktail bar. All their spirits are made from scratch here—whiskey, gin, vodka, bourbon, rum—you name it. And the cocktail program mixes classic methods with new age innovation. 100 Bridge St. BluebirdDistilling.com.

molly maguire's
IRISH RESTAURANT & PUB

197 Bridge Street, Phoenixville, PA 19460
(610) 933-9550 www.mollymaguirespubs.com

An authentic Irish pub experience right in the heart of Phoenixville, with three floors and three patios to cater to all your party needs.

DENNEY ELECTRIC SUPPLY
The Professionals Choice For Fast, Friendly Service... For Over 80 Years

No Electrical Project is too Big or Small!

450 Schuylkill Road (Route 23)
Phoenixville, PA 19460

M-F: 7AM-5PM SAT: 8 AM-12PM
610-917-3996

Welcome ...to Phoenixville! A continually growing community of unique businesses, recreation, and entertainment.

Discover ...boutique clothing, handmade items, refreshing cold-brew, and fine dining. There is something for everyone!

Enjoy ...all the events Phoenixville has to offer. First Friday? Check. Blobfest? Check. Food Truck Festival? Chhheeeck.

PHOENIXVILLE FIRST
Welcome. Discover. Enjoy.

PHOENIXVILLE FIRST
/PXVFirst // WWW.PHOENIXVILLEFIRST.ORG

A STEP ABOVE THE BEST

PHOENIX VILLAGE
LUXURY APARTMENT HOMES

In the Heart of Downtown Phoenixville
Inquire Today About Your New Apartment Home

131 BRIDGE ST. | PHOENIXVILLE, PA | 844.683.5350

GOLDEN TICKET 2020

The Golden Ticket is your opportunity to experience a private golf club membership. With this you and your family have full access to Phoenixville Country club.

For the golfer in the family, unrestricted tee times, tournaments and leagues, bag storage, locker, full service pro shop and much more. For the whole family you have full access to the clubhouse, ala carte dining and are able to attend all of the social and holiday events.

Join now and this membership will continue until December 31st 2020.

Single Golden Ticket Membership \$1250
Family Golden Ticket Membership \$2250

610-933-3727
membership@phoenixvillecc.com
phoenixvillecc.com

PHOENIXVILLE EVENTS

Phoenixville Food Truck Festival 2019

October 5

Over 30 food trucks plus other vendors. Main & Bridge Sts. Free parking with free shuttle. Noon to 6 pm. PhoenixvilleFirst.org.



Phoenixville Kiwanis KidsFest

October 5

Entertainment, food, family selfie booth, scarecrow contest and prizes. Reeves Park, 2nd Ave., 8 to 3. KidsfestPhoenixville.blogspot.com.

The Colonial Theatre

October 3–December 14

Point Entertainment Presents ... *Oct. 3*, Nitty Gritty Dirt Band; *Oct. 24*, Mat Kearney, “City of Black And White Revisited Acoustic Tour;” *Dec. 14*, A Night with The Lovemaster Craig Shoemaker. On *Oct. 4*, Joe Bob Briggs presents “How Rednecks Saved Hollywood” Live; *Oct. 11*, Found Footage Festival with Joe Pickett (*The Onion*) and Nick Prueher (*Late Show with David Letterman*). 227 Bridge St. 610-917-1228; TheColonialTheatre.com.

Phoenixville Pumpkinfest

October 19

Derby races, a carnival, crafts, live music and more. Crawl the town sampling pumpkin treats and products from local businesses, carve a mini-pumpkin, or compete in a pie eating contest. Bridge & Main Sts. 10:30 to 4. 484-928-0562; PhoenixvillePumpkinFest.com.

Halloween Parade & Trunk or Treat

October 23

Come downtown for the festivities which begin at 6. 610-933-8801; Phoenixville.org.

33rd Annual Phoenixville Run

October 26

A 5k and 10k course where costumes and leashed dogs are welcome. Free post-race refreshments for runners. Benefits Citizen Advocacy of Chester County. Reeves Park, 2nd Ave. & Main St. 8:30. \$30–\$35. PhoenixvilleChamber.org.

Fall Festival at Phoenixville Hospital

October 26

Lots of activities for kids, free health screen-

ings, DaVinci Robot, music, food and fun. Hospital parking lot, 140 Nutt Rd. TowerHealth.org.

Theatre Organ Society of DE Valley

October 27, November 17, December 1

Oct. 27, Halloween Silent Movie, “*The Golem*” with Wayne Zimmerman; *Nov. 17*, concert with Ron Rhode; *Dec. 1*, Holiday Concert. The Colonial Theatre, 227 Bridge St. 2 pm. \$5–\$10. 610-917-1228; TOSDV.org.

Phoenixville Harvest Festival

October 31–November 3

Fun all weekend long: night market on Thursday, then a craft carnival, movie in Reeves Park, haunted tours, beer garden, pet parade and pet day and more. Held throughout town. Info at Phoenixville-HarvestFestival.com.

“Empty Bowls” Event

November 1

Buy soup and bread served in a bowl hand-crafted by an area artist and help fight hunger. Benefits PACS. Technical College High School, Pickering Campus, Charlestown Rd. 4:30 to 7:30. 610-933-1105; PACSPhx.org.

Phoenixville Bed Races

November 2

Teams build a bed on wheels and race down 3rd Ave. to win the title of “Fastest Bed,” raising funds and awareness for organizations that provide a bed for the homeless: Ann’s Heart, Good Samaritan Services and Phoenixville Women’s Outreach. PXVBedRaces.org.



Phoenixville’s Wine, Wit & Wisdom

November 7

The annual library benefit. Wine tasting, dinner, silent auction and popular guest speakers (tbd). Rivercrest Golf Club & Preserve, 100 Golf Club Dr. 5:45 to 9. 610-933-3013, ext. 131; PhoenixvilleLibrary.org.

Phoenixville Chamber of Commerce

2019 Charity Gala, “Roaring 20s”

November 23

Dinner, dancing and silent auction with

great items. Benefits Barnstone Art for Kids. Rivercrest Golf Club & Preserve, 100 Golf Club Dr. 5:30. Visit website to register. 610-933-3070; PhoenixvilleChamber.org.

Annual Candlelight Holiday Tour

December 7

Decorated homes and churches, crafts, music, refreshments. Benefits Ann’s Heart Code Blue Shelter and Firebird Theatre. \$25. 3 to 7. Details 610-933-9181; PhxHolidayTour.weebly.com.



Holiday Parade &

Winter Shopping Market

December 6

A new tradition this year—the Winter Wonderland Village in the Main & Bridge Street Parking Lot. Starting at 5 pm, visitors can holiday shop, grab a snack and watch the parade, 7 pm, starting on the 200 block of Bridge St. Tree lighting follows. 610-933-2154; PhoenixvilleFirst.org.

Santa House

December 7–22, weekends

Sponsored by the Kiwanis Club of Phoenixville, Santa will be visiting his Phoenixville house every weekend in December leading up to Christmas. PhoenixvilleFirst.org.

16th Annual Firebird Festival

December 7

Burning of the Firebird at Veteran’s Park, 192 Mowere Rd. 4 to 11 pm. 610-933-9199; FirebirdFestival.com.

Illuminaria Shopping Night

December 11

A night of shopping illuminated by the soft glow of holiday luminaria. PhoenixvilleFirst.org.

A Taste of Phoenixville

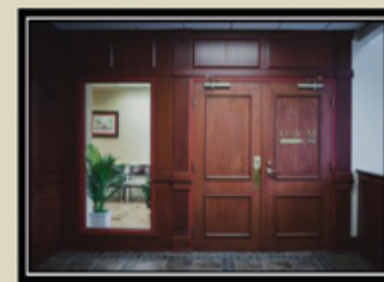
January 16, 2020

A premier food, wine, beer event. Live music. Benefits the Good Samaritan Shelter. Franklin Commons, 400 Franklin Ave. 6 to 10. 610-933-9305; TasteOfPhoenixville.com.

O.W.M.
LAW

O’Donnell, Weiss & Mattei, P.C.

Your Life. Your Business. Your Law Firm.



Elder Law & Special Needs Planning • Wills, Trusts & Estate Planning
Probate & Estate Administration • Divorce, Custody & Support
Business Planning & Transactions • Zoning & Land Use Planning
Real Estate Settlements • Title Insurance • Tax Assessment Appeals
Social Security Disability • Criminal Law, DUI & Civil Litigation
Accidents & Personal Injury

Pottstown:

41 E. High Street
Pottstown, PA 19464

610-323-2800

www.owmlaw.com



Phoenixville:

347 Bridge St., Ste. 200
Phoenixville, PA 19460

610-917-9347



THE COLONIAL THEATRE

New, Classic & Family Movies

Live Music & Comedy

Rental Opportunities

Beer and Wine Available

Open Seven Days a Week - Including Holidays

227 Bridge St. Phoenixville, PA - 610-917-1228 - thecolonialtheatre.com

CRUISE PLANNERS
YOUR LAND AND CRUISE EXPERTS

Traveling.

It leaves you speechless, then turns you into a great storyteller. — Ibn Battuta

I can help you become a great storyteller... — J. King

JOANN KING

Luxury Travel Specialist



River Cruising.

Start your story by experiencing the history and romance of countries like Holland, Portugal, France, & Germany.

Contact us for special cruise rates in 2019, 2020, & 2021

Call: 610.935.8956

Text: 610.952.0586

jking@LandAnd7SeasTravel.com

www.LandAnd7SeasTravel.com

FLST# 39068 • CST# 2034468-50 • HST# TAR-7058 • WAST# 603-399-504

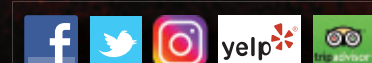
BRIDGE STREET
Chocolates
“a necessary luxury”

158 Bridge Street

Phoenixville, PA

610.935.8100

bridgestreetchocolates.com



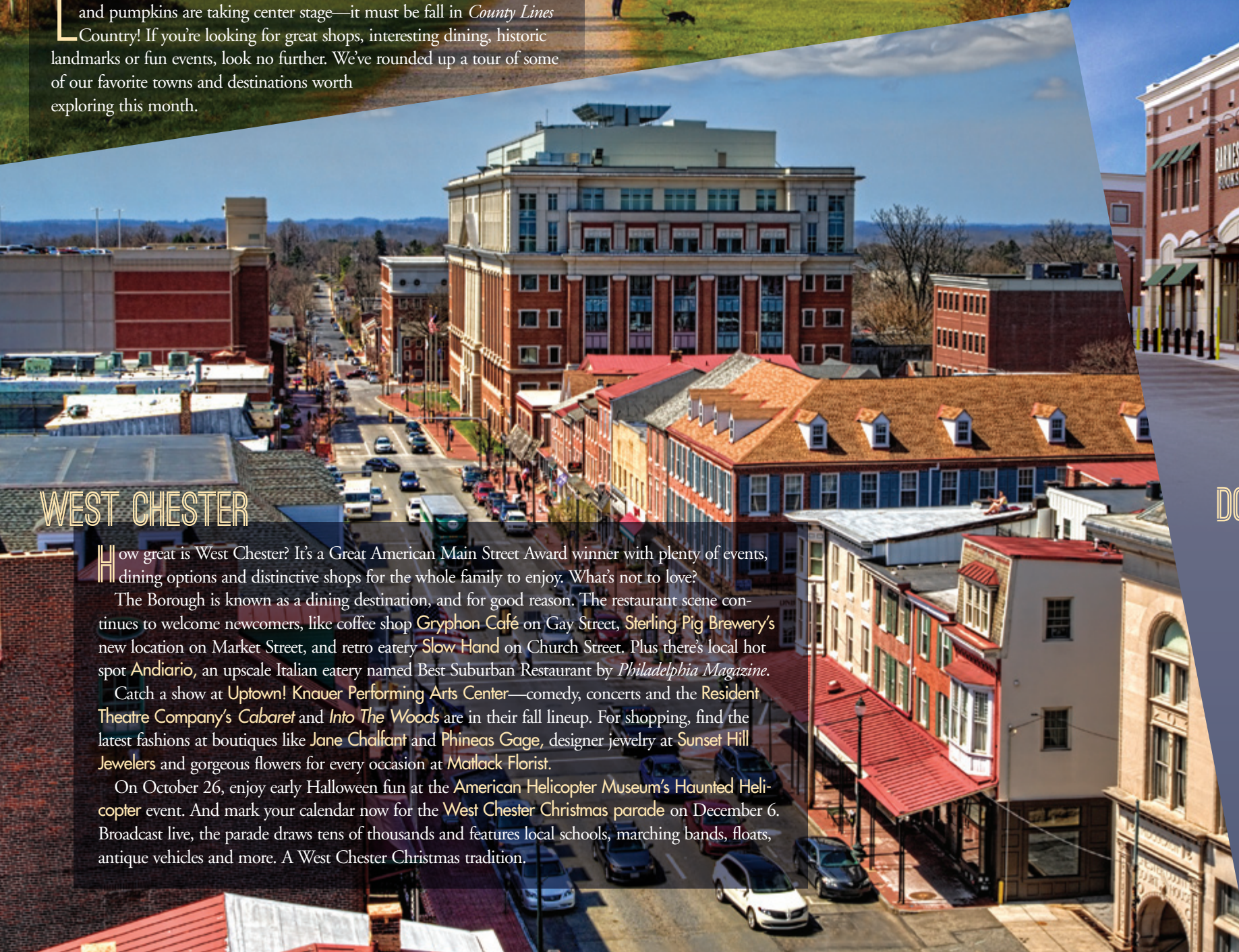


Across County Lines

Mercedes Thomas

THIS FALL TAKE A DRIVE THROUGH THE STUNNING LANDSCAPES AND SMALL TOWNS WE GET TO CALL HOME.

LEAVES ARE CHANGING, TEMPERATURES ARE DROPPING and pumpkins are taking center stage—it must be fall in *County Lines* Country! If you're looking for great shops, interesting dining, historic landmarks or fun events, look no further. We've rounded up a tour of some of our favorite towns and destinations worth exploring this month.



WEST CHESTER

How great is West Chester? It's a Great American Main Street Award winner with plenty of events, dining options and distinctive shops for the whole family to enjoy. What's not to love?

The Borough is known as a dining destination, and for good reason. The restaurant scene continues to welcome newcomers, like coffee shop **Gryphon Café** on Gay Street, **Sterling Pig Brewery's** new location on Market Street, and retro eatery **Slow Hand** on Church Street. Plus there's local hot spot **Andiario**, an upscale Italian eatery named Best Suburban Restaurant by *Philadelphia Magazine*.

Catch a show at **Uptown! Knauer Performing Arts Center**—comedy, concerts and the Resident Theatre Company's ***Cabaret*** and ***Into The Woods*** are in their fall lineup. For shopping, find the latest fashions at boutiques like **Jane Chalfant** and **Phineas Gage**, designer jewelry at **Sunset Hill Jewelers** and gorgeous flowers for every occasion at **Matlack Florist**.

On October 26, enjoy early Halloween fun at the **American Helicopter Museum's Haunted Helicopter** event. And mark your calendar now for the **West Chester Christmas parade** on December 6. Broadcast live, the parade draws tens of thousands and features local schools, marching bands, floats, antique vehicles and more. A West Chester Christmas tradition.



DOWNINGTOWN & EXTON

More than just malls and shopping centers, these towns are just a short distance apart on Route 30 and worth visiting together. There's fun for the kiddos, places to dine or grab a drink and of course, shopping.

Start in Downingtown with a hand-spun milkshake or scoop of salted caramel pretzel ice cream at the new **Creamery at the Farmhouse Coffee & Espresso Bar**. Or enjoy great home-brewed beer at the **2nd Annual D'Town Brew-Down** on October 26.

Get active at **Urban Air**, a year-round indoor trampoline amusement park full of climbing, jumping and obstacle course adventures, or check out the 10,000-square-foot indoor rock climbing gym, aptly named **Downingtown Rock Gym**.

On to Exton to enjoy a fine dining experience with filet mignon **Béarnaise** or seared duck breast at longtime favorite **Vickers Restaurant**, or one of the specials at the new steakhouse **ChopHouse Grille**, like kona-crusted New York strip steak. Under new ownership and a new name, check out **Marchwood Tavern** for live entertainment from local musicians.

Before leaving Exton, stop at the outdoor mall that is **Main Street at Exton**. Check out local favorite **Appetites on Main**, grab a drink from **World of Beer**, browse clothing, jewelry and more at **Exton Place** boutique, and try an evening at **Pinot's Palette**, a BYO beverage painting studio.

THE MAIN LINE

Next up, drive where there are fewer rolling hills but many more gorgeous homes with lush grounds and almost non-stop shops and restaurants to visit. That's the Lancaster Avenue (Route 30) corridor along the Main Line.

For some history, plan a trip to Malvern to tour **Historic Sugartown**, a preserved 19th-century crossroads village, then on to **Paoli Battlefield** for a self-guided tour, picnic or walk through the pristine Revolutionary War battlefield. And there's spooky fall fun at the **Paoli Battlefield Paranormal Tour** on October 12, food and drink provided. Come back for **Christmas on King** (Malvern's main business street) on December 7, for family fun, tree lighting and a Santa visit.

If you're looking for new treats and dining along the Main Line, you're in luck. **Brick and Brew** is a hot new spot in downtown Malvern, or you may also enjoy the relaxed vibe at **Locust Lane Brewery** or the **Pennsylvania Distilling Company** for a drink.

Bua Loy Cuisine just opened in Devon in May, and Bryn Mawr welcomes newly opened **Avalon Bistro** (also in West Chester) and La Cabra Brewing's satellite location, **Bodega**.

Be sure to come back for **Christmas in Wayne** on December 6 for caroling, horse-drawn carriage rides, face painting, ornament decorating and the tree lighting, followed by the Santa Parade on Saturday.

SOUTHERN CHESTER COUNTY

Every visitor to Southern Chester County should at least consider going to **Longwood Gardens**. This fall you can see international entertainment at their **Performance Series** along with poinsettias, pinecones, snowflakes and more during the holidays for **A Longwood Christmas**.

While you're in Kennett Square, stop into **Pure-bread Deli's** new location for unique sandwich combinations with canine-themed names—like the Jack Russell, with chicken, bacon, cheddar and pepper-corn ranch on grilled cheddar bread. And visit local favorites like **La Verona** for premier Italian dishes, **Lily Asian Cuisine** for sushi, sashimi and other delicious Asian cuisine, or the soon-returning **Byrsa Bistro** for Mediterranean delights.

Need more options? Check out **Portabellos'** new location on East State, get a brew and a tour at **Braeloch Brewing**, and have a bite to eat before throwing axes at **The Creamery**—all in Kennett Square. Just a short drive away is yet another new brewery at **Twelves Grill & Café**, West Grove's first brewery since the 1940s.

And finally, for historical fun, the **Brandywine Battlefield's Patriot's Day** is November 30—see firing demos, military life and drum music, 18th-century baker with fresh goodies, open fire cooking and military medical displays.

DELAWARE COUNTY

To the east in Delaware County, there's plenty to do in Newtown Square. A big attraction is the long-awaited **Whole Foods** and their **Darby Creek Café**, an in-store, casual eatery with a wood-fired oven and a menu filled with vegan and vegetarian options.

While you're in town, pick up sweet treats and Halloween goodies from **Christopher Chocolates**, get your mums and fall garden essentials at **Mostardi Nursery**, and be inspired for your next interior design project at **Main Street Cabinetry's** showroom.

On October 5, stop by **Colonial Pennsylvania Plantation** for their **Spirits at Sunset**, a haunted happy hour for adults with specialty themed cock-

tails, light bites and historical tour of the 1720 farmhouse and property.

Moving south, you'll find Media is a great stop for dinner and a show. Catch **Matilda, The Musical**, October 2–27, and **Elf: The Musical**, November 13–January 12, both at **The Media Theatre**. While you're there, grab a pre-show cocktail at **Ariano** or an Italian dinner at **Spasso Italian Grill**. And be on the lookout for **Chaps Pit Beef**, coming to Granite Run Mall soon. History buffs will love **Glen Mills' Newlin Grist Mill**, built in 1704. Join them on November 2 for their **Tavern Night**, with 18th-century food and drink, live period music and games.



WILMINGTON

Travel south into Delaware—we suggest Route 52 for a scenic route—and enjoy all Wilmington and its suburbs have to offer. Downtown Wilmington's recent revival into a vibrant town means there are always new things to see and do.

You'll find plenty of museums worth the drive—**Delaware Art Museum**, **Delaware Museum of Natural History** and the **Delaware Contemporary**.

For a fun shopping experience, check out the two-day **Hagley Craft Fair** on October 19–20, with fine arts, crafts and gourmet items from more than 50 artisans. Or go antiquing at the **Delaware Antique Show** on November 8–10. Browse and buy furniture, paintings, ceramics and jewelry from more than 60 of the country's most distinguished dealers.

Feeling hungry? Stop by the **DE.CO** food hall for quick dining options, from sushi and tikka misala to pizza and chicken and waffles. Or shop for local products and made-to-order foods from **Faire Market & Café**, a new neighborhood grocery owned by the folks from Stitch House Brewery.

Before you leave, take a ride on the **Wilmington Western Railroad**—try the **Autumn Leaf Special** (October 12 to November 3), the **Halloween Express** (October 27) or the **Santa Claus Express** (November 29 to December 23). If you're over 21, grab a ticket for one of their **Brews on Board** events, a 1½-hour round-trip where you're served two different beers and a pretzel.



B E Y O N D

There's even more to see on your way to Wilmington ... Take a quick detour to Centreville, Delaware for some tax-free shopping—find unique home goods, accessories and gifts at **Adorn Goods**, taste carefully selected domestic and European wines at **Collier's of Centreville**, browse art at **Hardcastle Gallery**, and find treasures at **Found Antiques and Decorative Furnishing**.

Bring your pup to Centreville on October 12 for **Doggerel Day**, a fun-filled, family-friendly afternoon with sheep herding and police dog demonstrations, food trucks, pet adoptions and a dog Halloween costume contest and parade! Or stop by November 30 for **The Santa Stroll** to join St. Nick as he walks through the village accompanied by carolers.

Just south of Centreville, finish out your trip at one of our area's gems, **Winterthur Museum & Garden**, the premier museum of American decorative arts set amidst a 1,000-acre preserve. And from November 30 to January 5, see breathtaking trees, beautiful room displays and a magical dollhouse during **Yuletide at Winterthur**. Another great way to catch some holiday spirit. ♦

PHOTO CREDIT: LESLIE KIPP



School Open Houses: How to Make the Most of Them

Edwin Malet

IT'S OPEN HOUSE SEASON AT AREA INDEPENDENT SCHOOLS—
TIME TO TAKE AN UP-CLOSE-AND-PERSONAL LOOK AT THE PLACE
YOUR CHILD WILL SPEND MOST WAKING HOURS.

MAYBE YOU'VE WALKED THE GROUNDS, ATTENDED a soccer game, talked to a graduate, a current student or a parent. Perhaps you've even thought about your own school experience, examined brochures and browsed websites, evaluated test scores, and talked with your own child. If you're diligent, you may have read several articles on our website. Yet you may—and you still *should*—have questions. Choosing a school is a major commitment that you and your child will be making. Don't be bashful about getting the information you need.

MAKING A SCHEDULE

Now is the beginning of the open house season for the 2020-2021 academic year, so it's time to begin. Your first step is to find out when your target schools are holding open houses—most

have several to choose from. Many schools plan open houses for October and February, but others are scheduled throughout the year. Check for open houses held at convenient times—mornings, evenings and even weekends. (There is a Guide to School Open Houses after this article and online at CountyLinesMagazine.com.) Then find out if registration is required, or if it's a walk-in-Wednesday-style session, which many schools host. You should be able to visit the several schools on your list.

PLANNING YOUR VISIT

Reviewing your target schools' websites gives you an overview and likely answers preliminary questions. Reading websites may spark other questions and generate questions specific to your child. Make some notes.



Woodlynde School



Episcopal Academy



Montgomery School



Benchmark School



Archmere Academy



Wilmington Friends

Talking to alums or families with children at your target schools may also help you make the most of your visit by giving you more background.

Beyond researching the mission, values and college-acceptance rates, you need to experience the school community in action. Listening to the panels of staff, students and alums is a great start, so long as there's also a walk through the halls and a visit to a class session and other activities.

Take advantage of their offerings, especially as you get more serious. You'll find strengths and weaknesses in areas important to you.

You'll likely have questions about the admissions process, financial aid and your child's special interests—sports, arts, music, for example—that you'll want to follow up on privately or with specific teachers or administrators. Open house sessions may provide that opportunity or at least identify the right contact for an individual session.

DURING YOUR VISIT

Many parents find that the best measure of whether a school is the right fit for their child is to ask the simple and obvious question: "Would my child fit here?" Your sense of whether your child would flourish and be supported in the school environment is key.

You may get some sense of the answer by seeing if current students are engaged and excited. What's the feeling in the classrooms? How do teachers and students interact? What's the activity level in the halls? Do teachers know each student academically, socially and emotionally? Try to envision your child at this school—sitting in the classrooms, playing on the grounds, interacting with the students you see.

AFTER YOUR VISIT

If you're interested in a school after the initial visit, you may want to—or in some cases, be required to—schedule a visit with your

child or have your child visit for a “shadow day” to attend classes.

Even if you’re considering enrolling your child in the lower school, you may still want to get a sense of what students are like in middle and upper levels. Most students don’t switch private schools, so your decision now may have long-term consequences.

And for a well-rounded view of the school community, consider attending a school play, a basketball game or other event where the entire school community is involved—students, teachers and other parents. That’s another way to see the whole school in action and not just during a planned event at an open house.

SCHOOLS AS PARTNERS

Open houses are key opportunities for schools to connect with prospective parents and students and to display what’s distinctive about their approach to education. Over the years, schools have become

excellent at helping families decide if there’s a good fit.

Admissions staffs understand that the process can seem daunting, and they can help families de-stress. The staff should feel like partners in the process and demonstrate that ability and commitment. Schools as well as parents have a vested interest in finding a good match between student and school.

Through a variety of events—structured and less so, formal and less so, in groups and with individual guides—schools will work to show off their best side and what makes them special.

And schools do their best to help parents stay on track and on schedule during this process with newsletters and updates. Schools will help so that admissions and financial aid forms meet deadlines, tests are scheduled and taken, and transcripts and recommendations arrive on time. Schools are experienced partners in this process.

FINAL THOUGHTS

My son, when asked how he chose his college, answered, “the atmospherics.” The reply at first seemed cavalier—I thought he’d met a girl he liked—as compared with evaluating the careers of its graduates, reputation, course offerings, quality of student life: the hard stuff.

His test may lack quantifiable data and apparent utility, especially for selecting a lower or middle school. But there’s no question that “atmospherics” are important. Whether your child will be successful will depend in large part on whether he or she—and you—like the school’s “feel.” And, ultimately, the only way to sample “the atmospherics”—that subtle question of whether your child fits—is to spend some time there.

So go ahead and go to the schools’ open houses. You’ll be glad you did. ♦

For information about open houses see the Guide following this article.

What You’ll See at Open Houses

Open Houses are the best opportunity for parents and prospective students to get a sense of the school community. Here’s what to expect.

Students, faculty, parents and coaches guide you through **Archmere Academy’s** collegiate-style campus, world-class facilities, and elite educational offerings. Families are guided in small groups by student ambassadors, making stops throughout campus, including presentations by department chairs, a ‘meet and greet’ with coaching staff, and a reception, where visitors hear from graduates attending their first years at their top-choice colleges.

Leah daPonte Lightcap
Director of Enrollment & Admissions, Archmere Academy

Each visitor at **Agnes Irwin School** will have one-on-one time with current students, parents and our outstanding faculty. Teachers, administrators, coaches and staff are all available to speak with you individually, which is not possible on a typical daytime visit. Our evening program gives you terrific access to multiple members of our community.

A. Randol Benedict
Director of Enrollment Management, The Agnes Irwin School

Bishop Shanahan is more than just a high school. It’s an experience that offers young men and women an educational journey of academic excellence, rich extracurricular opportunities and a community that radiates the Christ-centered values of love, respect and responsibility. Shanahan is proud to offer opportunities that nurture well-rounded ‘People of God; People for Others.’

Sister Regina Plunkett
President, Bishop Shanahan High School

Church Farm School helps young men attain an affordable private school education that engages them to become passionate learners constantly pursuing excellence for themselves and their CFS “brothers.” Our diverse community allows our students to embrace other cultures, while our small class sizes, coupled with a strong residential and day program, ensure that every student finds their voice at CFS.

Lisa Reynolds Smoots
Director of Admission, Church Farm High School

The Haverford School works to develop the full artistic, academic and athletic potential of each boy to prepare him for a life of meaning and service to others. We invite families to learn how we are building men of character, virtue and compassion who will serve as role models for our world.

Dr. John Nagl
Headmaster, The Haverford School

Montgomery School’s open house begins with informal sessions featuring teachers and students from each division and curricular area. They’re followed by walking and golf cart tours of our beautiful, 60-acre campus led by teams of student guides and parents. For those families with young children, we provide storytime,

crafts and playtime supervised by staff members, and hosted and staffed by our 5th grade students.

Drew Cocco
Director of Enrollment Management, Montgomery School

At **Sacred Heart Academy**, our goal is inclusivity—a place where girls can be their true, authentic selves—where all feel welcome, comfortable and thrive in their full identities. A place where people of all backgrounds can feel appreciated and respected for who they are. A place where young women can grow to become the best versions of themselves.

Tammy Hart
Director of Enrollment Management, Sacred Heart Academy

Independent schools are academically advanced, with teachers who are experts in their fields. At **The Tatnall School**, we aren’t confined by a particular curriculum, standardized testing or religious ideology. We educate the whole child. We recognize each child’s individual talents and foster a curiosity that sparks a love of lifelong learning and success.

Deanna Bocchetti
Assistant Head of School, The Tatnall School

Tower Hill has been a premier educational institution for the past 100 years, offering a challenging, innovative and student-centered academic environment; dynamic social, global, art and athletic programs; an exceptional student body and faculty; and a welcoming and inclusive community. After visiting past open houses, visitors have commented, “I wish I could go back to school!”

Amy Bickhart
Director of Lower and Middle School Admissions, Tower Hill School

We welcome families to experience an open house that reflects the **Villa Maria Sisterhood**. Student guides explain why they love Villa Maria and talk about opportunities in the arts, athletics, activities and service. Families will meet our dedicated faculty and walk our beautiful grounds. We hope prospective girls see what an exciting, inspiring and friendly home Villa Maria can be.

Mrs. Jennifer Gentleman Rose
Director of Enrollment Management, Villa Maria Academy High School

At a World Economic Forum, a leader talked about education and what we need to teach our kids. He pointed out that knowledge is important, but the soft skills—such as values, believing, independent thinking, teamwork and compassion—are what will help our kids stay competitive. As a current **Westtown School** parent, I have witnessed how these soft skills are embedded into the school’s curriculum in every division.

Current parent
Westtown School

Celebrating the Oyster

FallFest

SAT. OCT. 12

MAIN ST. ROCK HALL
10am–4pm, Rain or Shine!

MAIN ST. ROCK HALL
MUSIC • OYSTERS • KIDS KOURT
CRAFTS • GOOD FOOD
FREE ADMISSION



The People of Rock Hall, Mayor and Council, Merchants and Businesses, Welcome You to FallFest 2018 -Celebrating Family, Community and the “Mighty” Oyster

LIKE WHAT YOU SEE IN PRINT?

There’s even more online on Facebook, Twitter and Instagram for pics, videos, contests, giveaways and more! Follow us!



@COUNTYLINESMAGAZINE

COUNTY LINES
MAGAZINE



2020-2021 OPEN HOUSE
Sat., Dec. 7, 2019 | 9:00 AM-12:00 PM

LEARN MORE TODAY
www.CollegiumCharter.com



Located in Exton, Collegium Charter School is a tuition-free, independent, K-12 public school, giving PA families a choice in their children's primary and secondary education. Current enrollment exceeds 3,000 students. To learn more, visit our website or call 610-903-6363.

STRATFORD FRIENDS SCHOOL

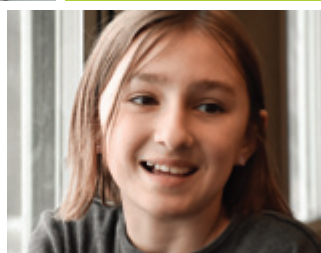
— guiding unique learners —



Providing nurturing, expert instruction for students in grades K-9 who have language-based learning differences.



 **6:1**
average class size



- Orton-Gillingham Approach
- IMSLEC Accredited Program
- Occupational Therapy
- Speech & Language Therapy
- Social Pragmatics



Rolling Admissions — Schedule a Private Tour Today!
610.886.4337 | stratfordfriends.org | Newtown Square, PA

Guide to School Open Houses



PENNSYLVANIA

Bryn Mawr

Sacred Heart Academy Bryn Mawr

480 S. Bryn Mawr Ave.

610-527-3915; SHABrynMawr.org

Established in 1865, Sacred Heart Academy (SHA) is an international, independent, all-girls, K-12 Catholic school on the Main Line. SHA is a proud member of the International Network of Sacred Heart Schools. The school has been committed for over 150 years to educating girls through faith, intellect, service, community and personal growth.

Open House: (All School K-12): Feb. 12, 4:30

(Kindergarten Discovery Day): Feb. 1, 9 am

Scholarship/Entrance Exam:

(5th, 6th, 9th Gr.): Oct. 19, 8:45

(9th Gr.): Nov. 10, 9:45

Parent Visit Days: Oct. 18, Nov. 5, May 7



Exton

Collegium Charter School

435 Creamery Way

Suite #300

610-903-1300;

CollegiumCharter.com

Located in Exton, Collegium Charter School is a tuition-free, independent, K-12 public school that gives PA families a choice in their children's primary and secondary education. Current enrollment exceeds 3,000 students. Enrollment is open to all PA residents. Most Collegium families reside in the Downingtown, West Chester, and Coatesville Area School Districts.

Open House: Dec. 7, 9 to noon



Chester Springs

Montgomery School

1141 Kimberton Rd.

610-827-7222; MontgomerySchool.org

At Montgomery School, every day presents new opportunities for discovery, exploration and growth, where students and faculty have the freedom to push academic boundaries. Small class sizes within an expansive 60-acre campus create a rich and challenging academic environment that builds confident learners and leaders from the earliest ages and is a place of joy and community inspiring a lifelong love of learning.

Open House: Nov. 10, 1 to 3; Feb. 12, 10:30;

Apr. 29, 6:30 to 8



Kennett Square

Upland Country Day School

420 West Street Rd.

610-444-3035;

UplandCDS.org

Upland was recently called "the most progressive and personalized school in the area." Against the setting of a gorgeous country campus, Upland delivers a challenging and enriching program rooted in the "4 As" of Academics, Athletics, Arts and Attitude while emphasizing problem-solving, leadership, communication and mindfulness.

Open House: Oct. 4, Oct. 30, Jan. 17, Apr. 22



Crum Lynne

The Pennsylvania Cyber Charter School

Phila. Area Regional Office

1553 Chester Pk.,

Sie. 103; 888-722-9237

PACyber.org

The learning never stops at the Pennsylvania Cyber Charter School, one of the nation's largest, most experienced and most successful online public schools. PA Cyber's personalized



Malvern

Villa Maria Academy High School

370 Central Ave.

610-644-2551; VMAHS.org

Villa Maria Academy is a Catholic, college preparatory school educating young women to be critical thinkers, creative problem solvers and collaborative citizens with strong communication skills. Rigorous academics, combined with innovative real-world experiences and extensive extracurricular





Villa Maria High School



PA Cyber Charter School



Centreville Layton School



The Camphill School



Wilmington Friends School



Archmere Academy



Stratford Friends School

opportunities, prepare young women with the skills and the confidence they need to meet the challenges of the future.

Open House: (All ages): Oct. 6

Visit Villa Days: (Gr. 8): Oct. 17 or 18,
Nov. 7, 8 or 22, Dec. 12

Entrance/Scholarship Exam: (Gr. 8): Oct. 20 or 26

Media

Media-Providence Friends School

125 W. Third St.

610-565-1960; MPFS.org

A Quaker school in downtown Media for students age 3 through grade 8. Small classes allow for a whole child approach to learning and differentiated instruction in a rich academic environment, where students find their passion with purpose. MPFS offers full-day preschool and kindergarten as well as an After-school Enrichment program with a diverse selection of classes from cooking and crafting to robotics and rock band.

Open House: Oct. 11th, 9 am,

RSVP to mpfs.org/rsvp



Newtown Square

Episcopal Academy

1785 Bishop White Dr.

484-424-1400

EpiscopalAcademy.org

Episcopal Academy, a Pre-K–12, coeducational, independent day school, offers a classical yet innovative academic program, renowned for excellence in the humanities and sciences and focused on social responsibility and ethical leadership. Episcopal's commitment to individual attention and to building an engaging, supportive school experience builds self-confidence and fosters a love of learning in all students.

Open House: Oct. 20, Nov. 2



Villanova

Academy of Notre Dame de Namur

560 Sproul Rd.

610-971-0498

NDAPA.org

With a bold strategic vision, innovative campus master plan, and new state-of-the-art



Riley Center for STEM Education, Notre Dame is inspiring young women from grades 6 to 12 to take their place as confident leaders in a global society. The Academy is a faith community, guided by the Catholic mission of service to others and the legacy of the Sisters of Notre Dame de Namur.

Open House: (Gr. 6–12): Sept. 29, 10 to 1

Experience ND Day for Parents: Oct. 23

Entrance Exams: (Gr. 9): Oct. 12 or 20
(Gr. 6): Oct. 20 or Jan. 25

West Chester

St. Agnes School

211 W. Gay St.

610-696-1260

SaintAgnesSchool/WC.org

Saint Agnes School has been providing generations of Catholic education for over 145 years! The mission of Saint Agnes School is to develop every student from preschool to grade 8 spiritually, intellectually, physically, emotionally and socially in a joyful, faith-based learning environment that inspires integrity,



Devereux | PENNSYLVANIA
ADVANCED BEHAVIORAL HEALTH



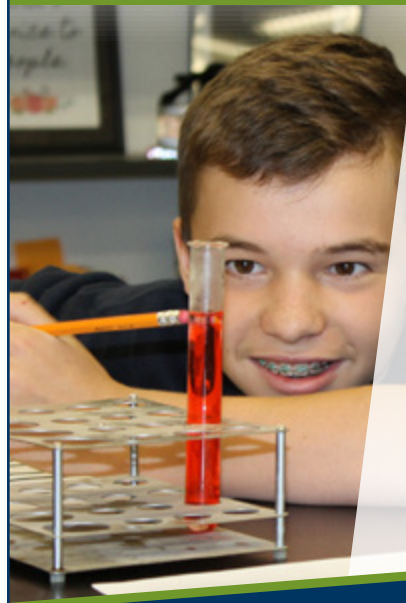
JOIN OUR TEAM!

Devereux Advanced Behavioral Health Pennsylvania's Approved Private Schools – located in Downingtown, West Chester, Malvern and Glenmoore – offer high-quality, innovative special education programs that work in tandem with families and school districts to ensure that students can return to their local schools and communities with the tools they need to succeed. **Populations served:** I/DD, behavioral health and autism.

We are hiring Special Education Teachers and Educational Support Staff.

Apply today at jobs.devereux.org/pa
EEO/Drug Free Workplace-Testing required

EXCEPTIONAL educators. EMPOWERED students.



Providing a comprehensive academic program for children in grades 1-8 who have been identified as having dyslexia, ADHD, or other learning differences.

Visit us!

**Admissions
Open Houses**

November 7
&
February 6
9:00-11:00 AM

BenchmarkSCHOOL
610-565-3741 • BenchmarkSchool.org

The Nation's #1 Indoor TRAMPOLINE & ADVENTURE PARK

URBAN AIR

WARRIOR COURSE CLIMBING WALLS TRAMPOLINES
TUBES DODGEBALL BATTLE BEAM

URBAN AIR
ADVENTURE PARK

**Voted Best Parties
2016-2017-2018**

Perfect for your School Fundraiser!

981 E. Lancaster Ave. Downingtown
Next to Palace Bowling, Across from Wegmans
www.UrbanAirDtown.com



Saints Simon & Jude



The Concept School



Montgomery School



Collegium Charter School

Wilmington Friends School



FALL OPEN HOUSES
6th-12th grade on Oct. 20
PS-5th grade on Nov. 16

Visit us at wilmingtonfriends.org or call 302.576.2930 to register for an Open House or to customize your tour. You can also Meet us Mondays!

Quaker matters. Come see why.

Serving students in preschool through 12th grade. Tuition assistance available.

Friends School
1773

MONTGOMERY SCHOOL

An Experience that lasts a Lifetime

EXPERIENCE THE FREEDOM to pursue possibilities and push academic boundaries. **EXPERIENCE CHALLENGE** in a curriculum designed to build confident learners and leaders. **EXPERIENCE JOY** and a community that inspires a lifelong love of learning. **EXPERIENCE MORE at Montgomery School.**

open house **Sunday, November 10 | 1:00 – 3:00 pm**
Register online at montgomeryschool.org/visit

PreK – Grade 8 Learn more at montgomeryschool.org/admissions



Academy of Notre Dame de Namur



Episcopal Academy



Sacred Heart Academy Bryn Mawr



Benchmark School

Guide to School Open Houses

citizenship, leadership and service to others in the Church and in the world.

Open House: Nov. 18, 7 pm

Open House: Jan. 26, 11:30 am

Tours Every Tuesday: 10 am

Saints Simon and Jude School

6 Cavanaugh Court

610-696-5249; School.SimonAndJude.org



Named a 2017 National Blue Ribbon School of Excellence. Provides a quality Catholic education for students Pre-K–Gr. 8. Their strong academics are enhanced by the latest technology. Renown for their community, students and parents have a sense of belonging. The community provides a nurturing environment in which students feel comfortable learning, growing and making decisions.

Preview Mornings: Nov. 15, Mar. 27, 8 am

Evening Visit: Nov. 14, 7:30 pm

Middle School Visit Night: Jan. 9, 6 pm

Catholic Schools Week Open House:

Jan. 26, 10 to 1

Wynnewood

Friends' Central School

(Grades 6–12), 1101 City Ave.

(Nursery–Grade 5),

228 Old Gulph Rd.

610-649-7440

FriendsCentral.org

Friends' Central School is

an independent, coedu-

cational, college-prepara-

tory day school for stu-

dents in Nursery–grade

12. Located on 41 acres across

two campuses, Friends' Central cultivates the

intellectual, spiritual and ethical promise of

students. Guided by Quaker values since

1845, Friends' Central has been educating for

excellence, inspiring tomorrow's leaders, and

encouraging students to peacefully transform

the world.

Open House: Nursery–Gr. 2: Oct. 5, 9 am

Gr. 3–5: Oct. 12, 9 am

All School Fall Open House: Oct. 14, 9:30 am

Parent Info Sessions: (All Divisions):

Oct. 2, Nov. 6, Dec. 4, Feb. 5, Mar. 4,

Apr. 1, May 6, Lower School, 9 am;

Middle & Upper Schools, 8:30 am



DELAWARE

Claymont

Archmere Academy

3600 Philadelphia Pk.

302-798-6632

ArchmereAcademy.com

Archmere Academy is

known for its elite, col-

lege preparatory program, which inspires stu-

dents to distinction. Founded by the Norber-

tine Fathers in 1932, Archmere is a Catholic

community that welcomes students of all faith

backgrounds. Archmere offers 24 AP Classes,

23 Sports, 35 Clubs and 1:1 Macbook pro-

gram. 79% of Archmere families receive

tuition assistance. Walking distance to SEPTA

Claymont Station.

Open House: Oct. 27, 1 to 4

(Gr. 7): Apr. 29, 6:30 to 8:30 pm



Wilmington

Wilmington Friends School

101 School Rd. (Rts. 202 & 95)

302-576-2900; WilmingtonFriends.org

Wilmington Friends is a

great place to grow up.

They offer an unsur-

passed academic program with depth, asking

students to question, collaborate, be creative

and take risks, all within a caring community

that balances focus on the individual with

responsibility to the common good. Reggio

Emilia inspired preschool, 1:1 laptop program,

STEM Labs and programming, and Interna-

tional Baccalaureate program. Preschool–12.

Open House: (Gr. 6–12): Oct. 20

(Pre-K–Gr. 5): Nov. 16



LEARNING DIFFERENCES
AND SPECIAL EDUCATION

PENNSYLVANIA

Downingtown

Devereux Autism Assessment Center

600 Boot Rd.

610-431-8830; Devereux.org/Autism

Provides comprehensive services to address

questions and concerns about Autism Spec-

trum Disorder, offering the gold-standard

in Autism assessment including the Autism

Diagnostic Observation Schedule (ADOS).

The program strives to deliver the highest

quality of services from intake, to thorough

assessment, to intensive follow up. It's in line



Inspiring future leaders
since 1785.

Discover EA at our OPEN HOUSE:

Middle & Upper School: Oct. 20 Lower School (PK-5): Nov. 2

Independent | Pre-K - 12 | Co-ed | Newtown Square, PA | episcopalacademy.org

Looking to make
*the best
educational
choice*
for your child?

Choose Pennsylvania's
most experienced,
tuition-free, K-12
online public school.



The Learning Never Stops
PAcyber.org

UPLAND
COUNTRY DAY SCHOOL

**AUTUMN
OPEN HOUSE**
An Evening Campus Stroll

WEDNESDAY, OCTOBER 30TH
6:00 P.M. TO 7:30 P.M.

PRESCHOOL THROUGH 9TH GRADE
420 West Street Road, Kennett Square, PA 19348
uplandcds.org | 610.444.3035

FAITH | INTELLECT | SERVICE
COMMUNITY | GROWTH



**SACRED HEART
ACADEMY**

— BRYN MAWR —

Founded in 1865, SHA is an
international, independent, all-girls, K-12,
Catholic school on the Main Line.

**UPPER SCHOOL
SCHOLARSHIP
ENTRANCE EXAM**

GRADE 9

SAT. OCT 19 | 8:45 AM

SUN. NOV. 10 | 9:45 AM

PARENT VISIT DAYS

OCTOBER 18 AND NOVEMBER 5

9:00 AM - 11:30 AM

Visit SHAbrynmaur.org for Event Registration
and Additional Admissions Events

480 S. BRYN MAWR AVENUE • BRYN MAWR
WWW.SHABRYNMAWR.ORG

**VILLA MARIA ACADEMY
HIGH SCHOOL**

EMPOWERING YOUNG WOMEN SINCE 1872

Join us for our Fall 2019 Events

OPEN HOUSE
All ages welcome
October 6

**ENTRANCE-
SCHOLARSHIP
EXAM**
8th graders
October 20 or 26

VISIT VILLA DAY
8th graders
October 17 or 18
November 7, 8 or 22
December 12

Register online at www.vmahs.org

370 Central Avenue, Malvern, PA 19355 ★ 610-644-2551



How will Notre Dame *inspire* your daughter?

Successful Students. Accomplished Graduates. Compassionate Leaders.

2019-2020 Admissions Calendar

Ninth Grade Entrance Exam
October 12

Sixth and Ninth Grade Entrance Exams
October 20

Experience ND Day
October 23



A Catholic, independent school for young women in grades 6 through 12

560 Sproul Road, Villanova, PA 19085 • (610) 971-0498 • NDAPA.ORG



COME SEE OUR NATIONAL BLUE RIBBON SCHOOL IN ACTION! RSVP FOR YOUR VISIT TODAY!

Preview Mornings — November 15 & March 27 — 8 am

Evening Visit — November 14 — 7:30 pm

Middle School Visit Night — January 9 — 6 pm

Catholic Schools Week Open House — January 26 — 10 am-1 pm

"After my visit to Saints Simon and Jude, I knew we found a home. I was extremely impressed with the faculty and facility. The deciding factor, though, was the students themselves. I saw numerous smiling, confident faces as I walked the halls. I was overwhelmed by the feeling of community and warmth that filled this school." Jim Deorio

school.simonandjude.org

610-696-5249 — advancement@simonandjude.org
6 Cavanaugh Court, West Chester, PA 19382



St. Agnes School



Media-Providence Friends School

with Devereux's mission of providing individualized and comprehensive services for children and adults with special needs.

Glenmoore

The Camphill School

1784 Fairview Rd.

610-469-9236

CamphillSchool.org

The Camphill School provides day and boarding options for children with intellectual and developmental disabilities in kindergarten through 12th grade and a Transition Program for 18 to 21 year olds. Camphill is a fully accredited Waldorf school and Pennsylvania Approved Private School offering a diverse curriculum, experiential learning, traditional and holistic therapies, pre-vocational experiences and a rich social life.



Malvern

Devereux Schools

610-873-4955

Devereux.org

Also: Downingtown,

Glenmoore & West Chester



Devereux Advanced Behavioral Health has offered excellent educational programs addressing a wide variety of learning issues for 107 years. Small classroom ratios allow for individualized instruction in a safe, therapeutic setting. Using Positive Behavior Intervention & Support approach, community-based instruction and work-study programs, Devereux helps students return to local

educational communities. Educational enrichments include a petting zoo at the Learning Center, and greenhouse programs at Mapleton and Brandywine schools. As an Approved Private School, Devereux is able to offer 4010s to school districts.

Schedule a tour today

Media

Benchmark School

2107 N. Providence Rd.

610-565-3741

BenchmarkSchool.org

Students who learn differently need a program tailored to the way they learn best, and that's what Benchmark School provides. Serving bright children in grades 1-8 who are identified as having dyslexia, ADHD or other learning differences, Benchmark School's comprehensive academic program fosters a mastery of executive function processes and 21st-century skills.

Open House: (For Professionals): Oct. 24

Open House: (For Admissions): Nov. 7,

Feb. 6*,

Apr. 9, May 7

*Snow date: Feb. 13

Newtown Square

Stratford Friends School

2 Bishop Hollow Rd.

610-355-9580

StratfordFriends.org

Established in 1976 as a pioneer in educating unique learners, Stratford Friends is an IMSLEC accredited Quaker school. Speech and



Upland Country Day School



Devereux Schools



Chester County Library System



Friends' Central School



OPEN HOUSE

Monday, October 14, 2019 • 9:30 am

Educating for Excellence Since 1845 • friendscentral.org



Now Enrolling PreK-12

Centreville Layton School offers a robust educational experience for students who learn differently. Our program identifies academic and social needs of individuals and provides a curriculum that focuses on problem solving and critical thinking. Through intervention and strengthening learning strategies, the school empowers each student to reach his or her potential.

302.571.0230

centrevillelayton.org/ccl

6201 Kennett Pike • Centreville, DE 19807

Guide to School Open Houses

Language, social pragmatics, and O.T. are included in their robust program. They use a structured, multi-sensory Orton-Gillingham based program that celebrates students' strengths, builds self-esteem and develops self-advocacy. Their expert teachers offer students individualized attention and instruction to become independent lifelong learners.

Call to schedule a private tour

Westtown

The Concept School

1120 East Street Rd.
610-399-1135

TheConceptSchool.org

For over 45 years, The Concept School



has provided a supportive environment for students in grades 6-12 who learn differently. The small class sizes, structured, customized curriculum, individualized attention, multi-sensory approach, and nurturing environment enable students to succeed and develop and be well prepared to meet the demands of post-secondary life,

including entering college, career training programs or the workforce.

Check website for Open House dates

DELAWARE

Centreville

Centreville Layton School

6201 Kennett Pk.
302-571-0230

CentrevilleLayton.org

Centreville Layton School offers a robust educational and cultural experience for students who learn differently. The program identifies the academic and social needs of the individual and provides a curriculum that focuses on problem-solving and critical thinking. Through intervention and strengthening learning strategies, the school empowers each student to reach his or her potential. Pre-K-12, and postgraduate program.

Open House: First Wed. each month, 9 to 11



EDUCATION SERVICES

PENNSYLVANIA

Exton

Chester County Library System

450 Exton Square Parkway
610-280-2615

ChesCoLibraries.org

The helpful and professional librarians and staff of the Youth Services

Department of the Chester County Library are always available to assist students—preschool to teens—with reference questions, research assistance and readers' advisory. The Library also offers a summer reading club, chess club and a teen library crew. Visit the library for educational and recreational materials or access a wealth of information and resources through ChesCoLibraries.org.



Visit CountyLinesMagazine.com for Open House updates throughout the school year.



Media-Providence Friends School



Meaningful Learning, Purposeful Life

Admissions Open House:
October 11th at 9 AM

Join us for Student-led Tours
& Current Parent Q & A

125 W. 3rd St • 610-565-1960 • mpfs.org/rsvp



St. Agnes Catholic School

Generations of Excellence in Catholic Education since 1873

2015 NATIONAL BLUE RIBBON
SCHOOL OF EXCELLENCE

Open Houses

November 18th at 7pm
January 26th at 11:30am



www.saintagnesschoolwc.org

211 W. Gay Street, West Chester, PA 19380 | 610-696-1260



Make Your Mark. Create Your Legacy.

- World Class Academics
- Competitive Athletics
- Small Class Sizes
- Award-winning Arts Programs
- Innovative Technology
- Community of Faith & Values

Be a part of the Class of 2024!
Shadow visits begin October 1st
Open House Program: Sunday, October 27th 1-4 p.m.



Archmere is a private, Catholic, co-educational college preparatory Academy enrolling grades 9-12, located on the PA/DE border, founded in 1932 by the Norbertine Fathers.

archmereacademy.com • 302-798-6632 ext. 713



Please join us at our
Open House
October 22
November 5



A Living Education

The Camphill School's mission is to create wholeness for children and youth with intellectual and developmental disabilities.

The Camphill School

1784 Fairview Road,
Glenmoore, PA 19343
610 469 9236
camphillschool.org

Connect, Learn, & Transform!
A library card opens a world of possibilities!

Sign up for a library card! It's FREE and EASY!



24/7 online access to eBooks, eAudioBooks, magazines & more



Free Internet access, WiFi and computers



Books and expert reading recommendations



Free family passes to local museums & attractions



Job, career, and personal finance resources & workshops



Digital Media Labs, STEM Kits, Library of Things, & Sensory-Friendly Programs

Sign up!

Visit www.ccls.org or any of our 18 convenient locations around Chester County!





Finding that Right Real Estate Agent

Laurel Anderson

THE BEST AGENT FOR YOU MAY DEPEND ON ... YOU ... AND YOUR HOME.

AGENT, REALTOR OR BROKER*? EXPERIENCED GUIDE, consultant, collaborator, therapist? So many choices! The person you choose to work with when buying or selling your home may serve a range of roles. Finding someone with the best background, who is both professionally qualified and easy to work with, takes time and effort. But that's a worthwhile investment since a home purchase or sale is a major financial decision.

We've talked with local experts who shared what they've learned in their years of working with hundreds of home buyers and sellers in our area. Here's what they recommend.

DO YOUR RESEARCH

As with many projects, a first step is to begin with some research—online and old-fashioned methods. Find out about realtors who are active and successful in your area. Look for agents' signs posted in the neighborhood and ask those who live in the area. You'll want someone with local expertise, who specializes in your type of home and your price range.

But which one?

Online sources—Zillow, Trulia, Realtor.com, Google, Yelp—have reviews to help you identify and assess potential agents. And the agents' own website also provides insight into style, professionalism, numbers and types of properties, and more.

Finding out about the realty company the agent is a part of is a good place to start. **Karen Nader of Sotheby's International Realty**

says, "By researching the company, you'll learn about the reputation, services and expanded marketing available when you work with an affiliated agent."

Amy McKenna of Country Properties suggests another level of research—reviewing the agents' online bios. "You can learn about an agent's professional background, including their areas of expertise, association memberships, board credentials, community connections, and more." Does the agent have the connections to know the area well—like news about proposed housing developments?

Check the agent's professional credentials through the state real estate commission and local associations. Look for certifications and awards, too.

EVALUATE EXPERTISE

Next it's time to hone in on experience and expertise. Look for years of experience in the business, experience in your target area, and with your type of property. Agents who aren't successful tend to move on or have fewer listings in their inventory.

Check for sales history—number of sales over the past few years. Too many sales may not be good, if there's no time left for you. Look at the ratio of listing price to selling price.

Holly Gross of the Holly Gross Group says, "A record of success shows there is a system in place that is working to effectively market the properties." And an excellent track record takes a long time to build; it's valuable because it attracts quality inventory and business.

It's a good sign that a realtor is busy ... just not too busy for you.

Most agents develop a sweet spot—areas where they know the market and local conditions down to the hyper-local level of schools, pre-schools, trains, local shopping, dining and area attractions. **Margot Teetor of Remax Preferred** works hand-in-hand with clients, especially those from out of the area. "I grew up in this area and know the countryside. I'll recommend buyers take a driving tour, and I'll suggest highlights to visit. Maybe stopping for a meal at The Whip Tavern to get the feel for Southern Chester County life," she says.

Look for experience in your price range and property type. Is there experience with investment properties? Condos? Luxury homes?

Expertise is especially important for unique properties—which can take longer or more effort to sell—such as small farms and conserved land.

Amy McKenna has years of experience working with properties under conservation easements. "These properties can be more complicated. But my experience helps when explaining the intricacies of easements and how they relate to a client's needs. I've been through the process many times before with many area land trusts—such as the Brandywine Conservancy and Natural Lands—and I know their process and requirements," she says.

SET UP INTERVIEWS

After your background research, plan to interview two or three potential agents. You'll want to get as much information as you can to make an informed decision. And get that information sooner rather than later.

You can verify information you've gathered and ask about things you didn't learn. And you can gauge the excitement the agent has for your property. **Chris Stoner with Keller Williams** says, "There's a big positive impact if the agent truly appreciates your property. Do they understand it, and can get behind it?" An interview helps you assess the enthusiasm level.

This is also your chance to see if your communications styles mesh—will you be comfortable working with this person for what may be several months ... or longer.

Does the agent merely try to sell you, or listen to your questions and needs? Do you feel pressure? Or trust? Is the agent relatable and real? Can you speak candidly? Is there the right chemistry to work together if things don't go as smoothly as you hope?

Meghan Chorin with the Meghan Chorin Team says she plans two interviews. "First to share information and get to know each other and the property. And the second interview is to set the best list price for the property—a fair price that will help it actually sell."

Feel free to ask to talk with references, too. A good agent should have happy former clients. You are, after all, hiring this person and want to know what to expect.

In the end, it's a business decision. But one you want to feel comfortable with.

“There’s a big positive impact if the agent truly appreciates your property. Do they understand it, and can get behind it?”

CONSIDER CHOOSING A TEAM

Working with a team gives you certain advantages—you get a deeper bench of expertise when there's more than one agent working for you. You'll have a broader range of experience to draw from, with more availability to meet your schedule.

For example, the Holly Gross Team is led by Holly and her two sons, Stephen and Stewart, with support from a team administrator, Holly's husband, in addition to several experienced agents.

A team may also offer you a greater range of services and marketing efforts. Real estate teams are often large enough to have their own team of experts and services such as photographers, stagers and handymen. Teams also have sophisticated marketing efforts—property brochures with floor

plans and plot plans, professional photos, videos and websites, frequent open houses, and extensive marketing online and in print publications.

One caveat when considering a team is to make sure you know who you will be primarily working with. Will your main contact be the agent you interviewed or the assistants? Is it a support team behind a big name or a team with several experienced agents?

CHECK FOR RED FLAGS

After you've done your due diligence of researching, evaluating and interviewing, take a step back to check for common red flags. Even if you've been thoughtful about your choice—and didn't choose the first person you found, a first-time agent or a relative—there are some common warning signals.

- Is the agent slow to respond? That's a bad sign for an ongoing relationship.
- Is the agent working only part-time? Your property may not be a priority.
- Despite claims of experience, does the agent appear to be unfamiliar with your area, type of property or price range?
- Does the agent immediately offer a lower commission?
- Does the agent suggest a listing price that's too high—out of line with other prices?

This last red flag may be tougher for homeowners to resist as they yearn for top dollar for the property. But Meghan Chorin says an agent proposing too high a price is a problem. "The property won't sell, and if it's on the market too long, it gets tainted."

She recommends careful review of comparable sales—similar square footage rather than number of bedrooms and baths, same school district, not just same town. The numbers don't lie if you're using arm's-length comparable sales (not involved in short sales, inheritances or divorces). And for unique properties—like farm or equestrian properties—looking back for three years is helpful.

One final piece of advice: Although you may not want to think about it, it's worth knowing under what terms you can end the relationship, if necessary.

With a bit of time and effort, here's hoping you find the right fit for you! ♦

* Although both must be licensed to sell real estate, the main difference between a real estate agent and a realtor is that a realtor is a member of the National Association of Realtors and must follow a prescribed Code of Ethics. To use the term broker, an agent must have certain extra education and hours of experience, prescribed by the state.



BLACK POWDER TAVERN
CRAFT AMERICAN FARE

Raising Spirits Since 1746

BANQUET & PRIVATE DINING / SUNDAY BRUNCH / HAPPY HOUR

1164 Valley Forge Road • Wayne, Pennsylvania 19087 • (610) 293-9333
BLACKPOWDERTAVERN.COM
 Less than 1 mile from Valley Forge National Historical Park



LA VERONA
610-444-2244

Live Music Every Thursday & Saturday
Friday is Entertainment Night
Private Party Dining up to 65 people
Early Bird Special / Happy Hour from 4 to 6!!

LA VERONA
Authentic Italian Dining

114 East State Street, Kennett Square, PA
 610.444.2244 www.LaVeronaPA.com

BEST
COUNTY LINES
2019



THE Gables
AT CHADDS FORD
DESIGNED AROUND
FRESH, SEASONAL
& LOCAL INGREDIENTS

PRIVATE EVENT SPACE AVAILABLE
 LUNCH: 11AM TUESDAY - SATURDAY
 BRUNCH: 10:30AM ON SUNDAYS
 423 BALTIMORE PIKE, CHADDS FORD, PA 19317
 WWW.THEGABLESATCHADDSFORD.COM

[Food News] *A few of our favorite things to share this month about local food and drink*

New Brew. Something exciting is brewing in West Grove! After an 80-year dry spell and then a successful ballot initiative (224 to 81 votes), Blondes & Brewnettes Brewing Co. will break the town's drought. The featured brews use ingredients from Southern Chester County, and are locally inspired —Red Devil Ale named for a high school mascot and grain-free meads from local Swarbustin' Honey. Opening at Twelves Grill & Café, so come thirsty! 10 Exchange Pl., West Grove. *BlondesAndBrewnettes.beer.*



Hot Mama. Mama Wong restaurant brings lip-numbing heat to Exton with spicy Szechuan cuisine. With a menu featuring regional Chinese dishes like Shanghai soup dumplings, smoked duck and mapo tofu—plus Cantonese faves for sensitive palates—Chef Hongbin Luo (Han Dynasty) serves up authentic Chinese comfort food. Co-owner Song Li named the spot to evoke memories of Chinese mothers' home-cooked meals for the growing local expat population. Join the growing fan-base at Mama Wong. 268 Eagleview Blvd., Exton. *BestMamaWong.com.*



Local Roots. Faunbrook Bed and Breakfast hosts a series of fun fall feasts, including a **Harvest Dinner** on October 17 featuring local root veggies dishes by Triple Fresh Catering. Enjoy music from the Allegro Group as you sip cider from Downingtown's Dressler Estate and beer and coffee from Exton's Stolen Sun Brewery. Take yummy dessert to-go from Cakes and Candies by Maryellen. Celebrate the community and local artisans at this annual autumnal meal! \$85. 699 W. Rosedale Ave., West Chester. *Tickets at Faunbrook.com.*

Time Travel. Calling all history buffs! Historic Yellow Springs is hosting an October 10th **Supper Lecture and Armchair Tour of Historic Sugartown**, partnering with the Chester County Historic Preservation Network. Immerse yourself in the history of this local gem, a preserved 19th-century crossroads town, protected as a historic district. Travel back in time, and enjoy a lecture, buffet dinner and drinks. \$20. *Historic Yellow Springs, 1685 Art School Rd., Chester Springs. More at CCHPN.org. Tickets at Eventbrite.com.*



Worth the Drive. If you haven't visited New Hope lately, there's a new spot with a familiar connection. Award-winning Iron Chef Jose Garces opened **Stella**, a small-plate, farm-to-table restaurant with produce from his Bucks County farm. Sample savory spreads, spaghetti pie and Pocono rainbow trout. Set in the former Ghost Light Inn next to the Bucks County Playhouse, Stella also boasts grand views of the Delaware River. Come for the food, and stay for the view! 50 S. Main St., New Hope. *Stellaneewhope.com.*



Chester County
FoodBank
BEYOND HUNGER

ChesterCountyFoodBank.org/donate • 610-873-6000

SERVING PHOENIXVILLE SINCE 1934

Fresh cut meats, deli, catering and More!

1098 WEST BRIDGE STREET, PHOENIXVILLE
610-935-1777 INFO@FORESTAMARKET.COM

WWW.FORESTAMARKET.COM

RON'S
ORIGINAL BAR & GRILLE
EST. 1990

scratch made.
organic choices.
gluten free
options.
hormone and
antibiotic free
meats.

EAT CLEAN
FEEL GOOD. LIVE WELL.

610.594.9900
www.ronsoriginal.com
74 E Uwchlan Ave | Exton, PA

Setting the Table for Local Food

THE KIMBERTON WHOLE FOODS STORY OF FAMILY, BUSINESS, COOKING AND A COMMITMENT TO LOCAL AGRICULTURE.



Alyssa Thayer

LONG BEFORE THE PHRASE “FARM-TO-TABLE” WENT mainstream, Pat and Terry Brett, co-founders of **Kimberton Whole Foods**, were already pioneering the local food movement. From their humble beginnings running a dairy farm store to their now six locations—Kimberton, Downingtown, Douglassville, Ottsville, Malvern and Collegeville—the Bretts have stayed true to their roots. Their mission is to support regional agriculture and cultivate a vibrant network of producers, growers and makers along the way.

Even today, Kimberton Whole Foods remains a family affair—their oldest son Ezra handles day-to-day operations, middle son Colin is head chef, youngest son Robin manages purchasing and oldest daughter Heidi runs the office. Pat chuckled, as she shared that her youngest daughter Rosie escaped the business to become a lawyer, but is still on speed dial for help with contracts.

In December, they released the *Kimberton Whole Foods Cookbook*—a compilation of 60 recipes ranging from old family favorites to innovative cafe creations. Pat explains her food philosophy in the book as fresh, homemade and right from the source. “For years customers had been asking for our cafe recipes,” says Pat. She and son Colin often

discussed creating a cookbook, but it wasn’t until they connected with local food writer Courtney Diener-Stokes and photographer Seneca Shahara Brand that the project was put in motion.

The final cookbook is much more than a collection of recipes. It shares the interwoven history of the Brett family and their business and pays homage to their community of farmers and artisans. Courtney noted her favorite part of the process was “getting to go visit all the growers and makers ... and of course getting to taste the recipes. When you eat Pat’s food, you can taste the love and care she puts into it.”

Even with five kids and a busy retail business, the Bretts always found time for a family meal. It was a time for them to come together, talk about their days and share wholesome food. Whether you are grabbing a bite at a market cafe or cracking open the cookbook for seasonal supper inspiration, it’s as though the Bretts have saved us a seat at their table.

You can find the cookbook at Towne Book Center (Collegeville), Reads & Company (Phoenixville), through the publisher (Hickory-GrovePublishing.com), and at all Kimberton Whole Foods locations. Look for upcoming signings and tastings on the Kimberton Whole Foods online calendar.



ALL PHOTOS COURTESY SENECA SHAHARA BRAND

Apple Arugula Salad with Manchego

The peppery flavor of the greens contrasts with the sweetness of the apple and saltiness of the nuts and cheese. It's a very simple salad to put together and makes a good meal on its own.



- ½ C. sliced almonds
- 4 heaping C. baby arugula
- 1 crisp, sweet apple (with skin on), cored and cut into matchsticks
- ½ C. (approx. ¼ lb.) Spanish manchego cheese, cut into matchsticks

For the Honey Sherry Vinaigrette:

- 2 Tb. honey
- 2 tsp. sherry vinegar
- ½ tsp. Himalayan pink salt
- 2 dashes freshly ground black pepper
- 3 Tb. extra virgin olive oil

In a dry frying pan, toast almonds over medium heat for 1 to 2 minutes until fragrant and golden brown on both sides.

Place arugula in a serving bowl and sprinkle apples, cheese and half of the almonds over greens.

To make the vinaigrette, place honey, vinegar, salt and pepper in a Mason jar with lid or small bowl, and shake or whisk to combine until salt dissolves. Add olive oil and shake or whisk again to blend.

Add vinaigrette to salad, and toss to coat. Top with remaining almonds.

Serves 4.

White Bean & Kale Soup

This hearty soup warms you from the inside out and has been a customer favorite at the Kimberton Cafe for years.

- 2 C. dried white lima beans, soaked and drained
- 2 to 3 Tb. extra virgin olive oil
- 1 large yellow onion, chopped small
- 2 C. celery, thinly sliced, including some leaves for extra flavor
- 4 small carrots (or 2 large), sliced into coins
- 6 C. water or vegetable broth
- 1 Tb. Himalayan pink salt, plus more to taste

Top 5 Reasons to be a Locavore

- **Peak Pick** – When you choose local produce, you're automatically eating with the seasons, and that means enjoying foods when they taste best. Don't believe us, do a taste test—July tomatoes vs. December tomatoes. There's no comparison!
- **More Nutrients** – The longer the wait between when produce is harvested and when it's consumed, the more time there is for nutrients to break down. By eating local, you're minimizing travel and storage and maximizing healthful benefits.
- **Better for the Environment** – Small biodynamic farms use sustainable growing methods, which contribute to a healthier ecosystem and a smaller carbon footprint. That, coupled with less shipping, creates a much more eco-friendly food system.
- **Supports Our Community** – When you buy local, your money is reinvested into the local economy and supports a vibrant community of growers and producers.
- **Safer Food Supply** – A shorter supply chain means fewer steps from the source to your table. This provides more transparency and less opportunity for contamination.

Want to eat local, but don't know where to start? "Not everyone needs to jump straight to quinoa," says Pat Brett, co-founder of Kimberton Whole Foods. She suggests starting with a favorite recipe and simply finding organic ingredients for it. Baby steps.

- 1 tsp. freshly ground black pepper
- 1 whole nutmeg, grated or ½ tsp. dried nutmeg
- 1 bunch of curly green or lacinato kale, stripped from stems and sliced in ribbons



Begin by soaking the dried lima beans overnight or for at least an hour.

In a large stockpot, heat a thin layer of olive oil over medium heat. Add onions, celery and carrots and cook for about 5 minutes, until softened, but not browned. Add water or broth, lima beans, salt and pepper. Grate in about half of the whole nutmeg.

Bring to a boil, stir well, and reduce heat to simmer.

Check soup at 15-minute intervals, stirring occasionally, until beans are soft to the bite. Add kale and more salt to taste. Stir well and simmer for another 15 minutes.

Grate a bit of fresh nutmeg over the top of soup when you serve for extra aroma and flavor.

Serves 8 to 10.

Mac 'n' Cheese with Pecans and Pears

This dressed-up mac 'n' cheese by Colin Brett, creative food director at Kimberton Whole Foods, is a crowd-pleaser, featuring brie, pears and a pecan brittle topping.



- ½ C. (1 stick) unsalted butter
- ⅓ C. gluten-free flour
- 2 C. heavy cream
- 3 C. whole milk
- ½ lb. brie cheese, trimmed and cut into cubes
- ½ lb. smoked Gouda cheese, cut into cubes
- ¼ lb. sharp cheddar, cut into cubes or shredded
- ¼ tsp. ground coriander
- ⅛ tsp. ground nutmeg
- 2 tsp. Himalayan pink salt
- 2 ripe pears, cored and diced with skin on
- 1 lb. cooked gluten-free penne pasta
- Freshly ground black pepper to taste

For the Pecan Topping:

- 1 C. raw pecan halves
- 2 Tb. brown sugar
- ¼ tsp. vanilla
- ½ C. water

Preheat oven to 375°F.

In a medium saucepan, add pecan topping ingredients and cook over medium heat, stirring frequently. Continue cooking until water has evaporated and pecans stick together.

Spread the mixture out on an oiled baking sheet lined with parchment paper. Bake for 10 minutes, and then cool for 10 minutes after cooked. Place in freezer for an additional 10 minutes. Remove and chop pecans into small pieces.

In a large saucepan, melt butter over medium to low heat. Cook butter until it just begins to brown. Add flour and whisk for 2 minutes. Add cream and milk, whisking frequently, until sauce thickens. Add brie and Gouda, continuing to whisk. When melted, add cheddar, coriander and nutmeg. Add salt and half of pears and stir to combine.

In a 7-quart Dutch oven or casserole dish, add cooked pasta. Pour cream sauce over pasta and stir to coat evenly. Sprinkle pepper, pecans and remaining apples evenly over the top of mac and cheese.

Bake for 10 minutes, or until cheese sauce is bubbling. Let sit for 10 minutes before serving.

Serves 6 to 8.

Nut-Free Carrot Cake

This is an original Kimberton Cafe recipe from back in the day that swaps coconut for walnuts to give it plenty of texture without using nuts.



- 2 C. whole-wheat pastry flour or gluten-free flour
(I prefer Bob's Red Mill Gluten Free 1 to 1 Baking Flour or Pamela's Gluten-Free All-Purpose Flour Artisan Blend)
- 2 tsp. organic cinnamon
- 2 tsp. baking soda
- 1 tsp. Himalayan pink salt
- 2 large eggs
- ¾ C. sunflower oil (or other mild oil)
- ½ C. yogurt or buttermilk
- 1 C. raw sugar
- 1 C. crushed pineapple, well-drained (reserve a few tsp. of juice)
- 2 C. carrots, shredded
- ½ C. unsweetened dried coconut
- ½ C. raisins

For the frosting:

- ½ C. (1 stick) unsalted butter, softened to room temperature
- 1, 8-oz. package cream cheese, room temperature
- 4 C. powdered sugar
- 2 tsp. vanilla extract
- Reserved pineapple juice



A fall outdoor gathering at the Brett home

Preheat oven to 350°. Grease two 8- or 9-inch round cake pans and line bottoms with parchment paper for easy removal or use a 9-by-13-inch rectangular baking dish.

In a large bowl, combine flour, cinnamon, baking soda and salt.

In another large bowl, beat together eggs, oil, yogurt or buttermilk and sugar until combined. Stir in pineapple, carrots, coconut and raisins. Add dry ingredients to wet ingredients and stir just until combined.

Pour batter into prepared pans and bake for about 35 minutes until cake springs back lightly in center and begins to pull away from edge of pan. Cool for 15 minutes before turning out onto a cooling rack.

To make frosting, use an electric mixer to cream together butter and cream cheese. Beat in powdered sugar, 1 cup at a time. Add vanilla. If frosting is too thick to spread easily, add reserved pineapple juice 1 teaspoon at a time.

Serves 12. ♦

Alyssa Thayer found her love of food at an early age, frolicking around her mother's organic farm and eating her weight in berries and snap peas each summer. She is a self-proclaimed urban farm girl, whose mission is to bring inspired ideas to life, passionate people together, and good food to every table.



For more great recipes visit
CountyLinesMagazine.com

Chester County Birchrunville, PA Horse Country



Spectacular views of valley & hills, this updated 1850's Farmhouse features 5 bedrooms, pool, 10 acres & 7 stall bank barn. Opportunity to purchase adjoining 19 acre bldg. lot with new Stone Barn/ Workshop/Studio.

Call for more information



Duffy Real Estate, Inc.
527 E. Lancaster Ave.
St. Davids, PA 19087
Office: 610-254-9292

**Call/ Text Direct:
610-314-3141**



Julie Romfh, Realtor®
Full Time Agent Providing
Unsurpassed Service



ALEXIS KLETJIAN AWARD-WINNING JEWELRY DESIGNER

131 EAST STATE STREET, KENNETT SQUARE, PA
GALLERY HOURS: WEDNESDAY - SATURDAY, 10AM-5PM



ALEXISKLETJIAN.COM



COUNTY LINES
MAGAZINE

2018 WINNER: EVELYN CONNOR

Capturing CHESTER COUNTY Photo Contest

You and Chester County!
Send us your one best image of you in your
favorite place in Chester County

1. Like us on Facebook @CountyLinesMagazine.
2. Upload & hashtag your 1 best photo **#capturingchestercounty**
OR send it to **info@valleydel.com**.
3. Tell us **when** and **where** it was taken.



The winner will
receive a \$100 gift
certificate to
Main Point Books!

ENTRIES MUST BE RECEIVED BY **OCTOBER 8, 2019!**



WELCOME NEIGHBOR!

Our sponsors make it possible!

It is through the thoughtfulness and caring of many fine local businesses and professionals that our visits to newcomers and other celebrants are made possible.

We have some room in our basket for
a few more sponsors.

You can learn about Welcome Neighbor and our unique
personal promotion service at our web site:

www.WelcomeNeighbor.us

REQUEST OUR POWER POINT PRESENTATION:
610-358-0580



When You're Selling or Buying a Business

Choose the Broker with Knowledge, Integrity,
Dependability, and Connections

**Business Sales
Buyer Searches
Business Valuations**

**Contact me for a complimentary no
obligation consultation TODAY!**

Marwan Nabulsi
Murphy Business & Financial -
Eastern PA
Ph: (484) 905-2080
m.nabulsi@murphybusiness.com
www.MarwanNabulsi-Murphy.com



Over 160 offices across the United States and Canada

Index to Advertisers

Look for *County Lines* at Wegmans, Main Point Books, at Events and Affiliates. Check our website's Get A Copy page.

Academy of Notre Dame de Namur	68	Elverson Antiques Show	26
Alexis Kletjian Jewelry Designer	81	Episcopal Academy	66
Archmere Academy	70	Five Star Senior Living, DE	6
Benchmark School	64	Flowing Springs Landscape Design	21
Berkshire Hathaway Fox Roach / Holly Gross Group	2	Foresta's Market	76
Black Powder Tavern	74	Friends' Central School	68
Brandywine Fine Prop./Sotheby's K. Nader	9	The Gables at Chadds Ford	74
Brandywine Oral Surgery	5	George H. Rothacker	25
Bridge Street Chocolates	49	Greystone Hall	27
Campbell School	70	Heritage Design Interiors, Inc	37
Centreville Layton School	68	Iron Hill Brewery & Restaurant	41
Chester County Art Association	26	Key Financial, Inc.	3
Chester County Food Bank	76	King Construction	16
Chester County Historical Society	18	La Verona Authentic Italian Dining	74
Chester County Library System	71	Land And Seven Seas Travel	49
Collegium Charter School	60	Liz Walton Home	41
The Colonial Theatre	49	Madsen Kitchens & Bathrooms	37
The Concept School	14	Malvern Bank	4
Connoisseur Travel	22	Media-Providence Friends School	71
Delaware Art Museum	18	Molly Maguire's Restaurant & Pub	47
Denney Electric Supply	47	Montgomery School	64
Devereux Schools	63	Murphy Business Sales	81
Duffy Real Estate, Inc. / J. Romfh	81	OWM Law, O'Donnell, Weiss & Mattei, PC	49
E. C. Trethewey Building Contractors, Inc.	16	PA Cyber Charter School	67
		Phoenix Village	47

County Lines is available at the following advertisers. See our Advertiser Directory on CountyLinesMagazine.com.

Phoenixville Country Club	47
Phoenixville Federal Bank & Trust	24
Phoenixville Hospital	7
Phoenixville Regional Chamber of Commerce	46
ReMax Preferred / M.M. Teetor	83
Resident Theatre Company	28
Rock Hall Fall Fest	58
Ron's Original Bar & Grille	76
Sacred Heart Academy Bryn Mawr	67
Sage Life	12
St. Agnes School	71
SS Simon & Jude School	68
Salvaged Furniture Company	36
Stratford Friends School	60
Sugarbridge Kitchens & Baths	back cover
SV Dental	23
Tower Health	7
Upland Country Day School	67
Urban Air Trampoline Park	64
Villa Maria Academy High School	67
Walter J. Cook Jeweler	10
Welcome Neighbor	81
West Chester Rotary Chili Cookoff	28
Wilmington Friends School	64
Wolf Sanctuary of PA	24

This Index is provided as an additional service to our advertisers. County Lines takes no responsibility for errors.

Three incredible properties; something for everyone!

Charming 1800's home
10.5 acres in ACT 319
5-stall barn
Bank barn with workshop
and apartment
Fishing pond



Pemberton Road
An equine property in Kennett Square, PA



4,825 sq ft. home
on 50 stunning acres
Two private guest wings
Modern kitchen with
top-of-the-line
appliances
Stone fireplaces
Wine cellar
Swimming pool
13-stall barn with
groom's apartment
Indoor arena
Outdoor arena



Four Chimneys farm
An historic equine property in Unionville, PA



GET US ON DIGITAL



Our **DIGITAL EDITION** is an exact replica of our print magazine in electronic form. Buy a digital subscription (on our website) and download the magazine as a PDF or view it on your Internet browser from your computer. Or access the digital edition through an iPad and iPhone app.

Issuu.com/CountyLinesMagazine



Balderston Lane farm
139 acres in Colora, MD

Mainly open fields
Old log cabin house just waiting to be restored!
Enclosed market stand off of Colora Road
Large tenant house for employee housing
Easy access to Rte. 1 and I-95

Margot Mohr Teetor
610-476-4910
mmteetor@gmail.com
margotmohrteetor.com

RE/MAX
Preferred
610-719-1700