

Love your Kitchen!



Photography by Letitia Clark

Kitchen Renovation
Historical 1800's Chester County Home

Sugarbridge
Custom Kitchens & Baths

Visit us on our website: www.Sugarbridge.com

VAN CLEVE PAVILION
1604 E. LANCASTER AVENUE • PAOLI, PA • 19301 • 484-318-8367

2019 DATEBOOK

\$3.95

COUNTY LINES

Your guide to unique places, interesting events, fine dining, great shopping and the special lifestyle of Southeastern Pennsylvania and Northern Delaware



CHARITY DATEBOOK
Faces of Philanthropy



A Great Place to **Visit.**

An Even Better Place to **Retire.**

With its rolling farmland, active suburbs, and a lively downtown, you've discovered that Lancaster is a great place to visit. It's a city bustling with shops, live theater, historical sites, and nationally recognized restaurants, creating many opportunities to learn, explore, and have fun.

As great as Lancaster is to visit, **it's an even better place to retire.** Citing criteria that include happiness of local residents, housing affordability, tax rates, and healthcare quality, *U.S. News & World Report* recently named Lancaster the #1 place in the nation for retirement.

Ready to explore senior living here? Nestled on 210 acres just three miles from downtown Lancaster, we invite you to discover Willow Valley Communities, a premier 55+ community with a 30+ year tradition of amenity-rich excellence. As an A-rated Lifecare community, you get the financial security of knowing your fees won't increase because you later need personal care, skilled nursing care, or memory support.

Willow Valley Communities may be one of the finest—and smartest—investments you can make for your retirement. And with 90+ floor plans, from cozy studios to 3,300-square-foot townhomes, there is something for everyone. While you're visiting Lancaster, contact us for your personalized tour.

866.454.2922 | Info@WillowValley.org | WillowValleyCommunities.org | Lancaster, PA



Forbes
#16 NATIONALLY
RANKED
TOP FEMALE
WEALTH ADVISORS
2018

BARRON'S
2006-2018
Top 100 Women
and also Top 1,200
Advisors in
America!

WEALTH MANAGEMENT WITH WISDOM & CARE

PATTI BRENNAN, CFP®



JOIN ME ON MY PODCAST!
The Patti Brennan Show

Dedicated to helping improve your net worth.
Get it on iTunes, Stitcher, Spotify or Google Play Music

NATIONALLY ACCLAIMED for Her Wisdom in Wealth Management...
LOCALLY RECOGNIZED for Her Care and Service to the Community...

PATTI CURRENTLY SERVES AS A BOARD MEMBER FOR CUDDLE MY KIDS AND THE YMCA OF GREATER BRANDYWINE,
AND FORMERLY SERVED ON THE BOARDS OF THE CHESTER COUNTY ECONOMIC DEVELOPMENT COUNCIL,
SEEDCO (APPROVING SBA LOANS), AND PENN MEDICINE CHESTER COUNTY HOSPITAL.

1045 ANDREW DRIVE, SUITE A
WEST CHESTER, PA 19380
610.429.9050

KeyFinancialInc.com



KEY FINANCIAL, INC.
Wealth Management With Wisdom & Care

Securities offered through Royal Alliance Associates, Inc., member FINRA/SIPC. Insurance services offered through Patricia Brennan are independent of Royal Alliance Associates, Inc. Advisory services offered through Key Financial, Inc., a registered investment advisor, not affiliated with Royal Alliance Associates, Inc.
The Forbes ranking of America's Top Wealth Advisors, is based on an algorithm of qualitative and quantitative data, rating thousands of wealth advisors with a minimum of seven years of experience and weighing factors like revenue trends, assets under management, compliance records, industry experience and best practices learned through telephone and in-person interviews. There is no fee in exchange for rankings.
The "Barron's Winner's Circle Top 1200" is a select group of individuals who are screened on a number of different criteria. Among the factors that advisors are assessed include their assets under management, revenues, the quality of service provided to clients, and their adherence to high standards of industry regulatory compliance. Portfolio performance is not a factor. Please see Barrons.com for more information.
The "Barron's Winner's Circle Top 100" is a select group of individuals who are screened on a number of different criteria. Among factors the survey takes into consideration are the overall size and success of practices, the quality of service provided to clients, adherence to high standards of industry regulatory compliance, and leadership in "best practices" of wealth management. Portfolio performance is not a factor. Please see Barrons.com for more information.



2020 VISION: Chester County Hospital Sets Eyes on its Largest Expansion Yet

In 2020, Chester County Hospital will complete a 250,000 square foot expansion and 26,000 square foot renovation plan that will make world-class health care accessible to all of Chester County. This project is the largest expansion in the hospital's history.

The new expansion will house 15 state-of-the-art operating rooms, high-tech labs for cardiac catheterization and electrophysiology, and new areas for interventional cardiology and pre-admission testing. The community we serve will experience 99 new private patient rooms for peaceful healing, an expanded Emergency Department with 13 additional patient rooms for expedited emergent care, a new community pharmacy, calming public spaces in our new lobbies and interior courtyard, and additional shopping and dining options in the new café and Gift Shop.



Collaboration and Planning

Planning for an expansion of this size and complexity requires consensus building among multiple stakeholders. For over two years, starting in 2015, architects met with clinical staff to seek their feedback on each of the areas that comprise the expansion.

The design meetings concluded before the start of construction. Similar sessions will be held to address how to best incorporate the new and updated spaces into the rest of the hospital so that they function seamlessly.



Designing a Better Space For Healing

This new space will resonate with the needs of patients, families and medical providers and will support the values of a community-based hospital. Chester County will benefit from having urban innovation right here in the suburbs.

"This expansion project, which is a testament to Chester County Hospital's partnership with Penn Medicine, highlights the hospital's and the health system's commitments to expand lifesaving treatments and programs in the community. The venture accommodates anticipated growth and will continue the hospital's movement towards world-class health care for all of Chester County, PA," said Michael J. Duncan, President and CEO of Chester County Hospital.

It is an elegant, forward-looking design rooted in the hospital's architectural tradition and its lasting mission: To be the leading provider of care in the region and a national model for quality, service excellence and fiscal stewardship.



Introducing the Next Generation of Care.

We're undergoing our largest expansion yet, implementing programmatic innovation to bring new possibilities for all who come to us for care. With 250,000 square feet of progressive design, we're not only building a better space for healing, we're defining the future of medicine in our community. Another reason your life is worth Penn Medicine.

See what's coming.
ChesterCountyHospital.org/Expansion



**BERKSHIRE
HATHAWAY**
HomeServices

Fox & Roach, REALTORS®

HOLLY GROSS GROUP



Holly Gross Stephen Gross Stewart Gross
Jenny Cassidy Michael Mummert Herb Schwabe Harry Price

HollyGrossGroup.com | 610-430-3030



Westtown

Significantly Historic Stone Home
Superior Millwork | Stunning Grounds
Numerous Fireplaces | Stable | Pool
Offered Several Ways - Call for Details



Chester Springs

63 Acres | Converted Barn | Pool
Par 3 Golf Hole | Apple Orchard
Pond | Subdivision Possible
\$3,900,000



Birmingham Township

7 BR, 4.2 BA | 28.5 Acres
Greenhouse | Pool | 4-Car Garage
Bank Barn | Unionville Schools
\$1,999,990



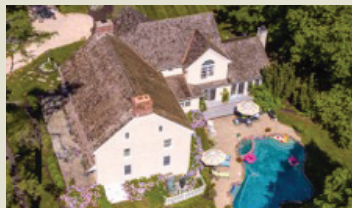
Chester Springs

7 BR, 4.2 BA | 57.1 Acres
Antique original millwork & floors
4 BR Tenant House | 15 Stall Barn
\$1,800,000



Unionville

5 BR, 4.2 BA | 23+ Acres
Indoor Pool | Barn | Large Riding Ring
In-Law Suite | Unionville Schools
\$1,795,000



Unionville

6 BR, 4.1 BA | 74 Acres | Updated
Private Pool | Amazing Barn
Excellent Equestrian Facility
\$1,749,000



New Construction

20 Acre Lot | Unionville Schools
Choose from our floorplans or yours.
Surrounded by large farms & estates
\$1,749,000



West Marlboro Township

46.2 Acre Parcel | On quiet country road
Midst of equestrian area | Protected views
Unionville-Chadds Ford School District
\$1,685,000



Glenmoore

Custom 5 BR Home | 9,313 SqFt
10+ Acres | Barn | Fenced Pastures
Great Location | In-ground Pool
\$1,299,000



Chester Springs

4 BR, 4.1 BA | 20.1 Acres
In-Law Suite | 3 Car Garage
Gourmet Kitchen | Stunning Property
\$1,249,000



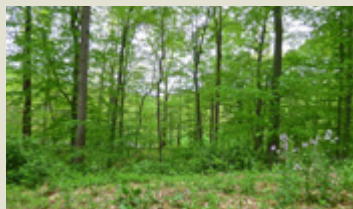
Unionville Area

5 BR, 4.2 BA | 31.6 Acres
Private | Separate Apt | Barn
Riding Ring | Cheshire Hunt
\$1,198,000



Unionville Schools

4 BR, 3.1 BA | 11.51 Acres
c.1821 Stone & c.1999 Brick Home
Privately set overlooking tranquil ponds
\$1,098,000



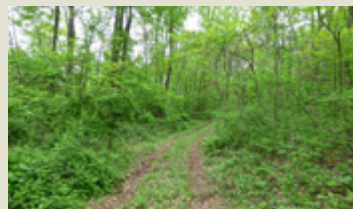
Willistown Township

Your dream home on this 4.3 acre lot
Set on quiet road in Radnor Hunt area
Near large estates | Great Valley Schools
\$949,000



Pocopson

4 BR, 2.1 BA | 0.93 Acres | 2x Garage
Natural Gas System | Great Spaces
Unionville Schools | Commuter-friendly
\$595,000



East Nantmeal Township

Build your dream home on this 10 acre lot
On quiet road surrounded by large estates
Overlooks French Creek Valley
\$339,000



Townhomes

3 BR, 2.1 BA | Southview Townhomes
1 Car Garage | Open Layout
Great Commuting Location
\$219,900

WALTER J. COOK JEWELER



Gold. Diamonds. Turquoise.
Oxidized sterling silver cuff bracelet by Lika Behar

36 Chestnut Road | Paoli, PA 19301 | 610.644.5347

walterjcookjeweler.com



from the
EDITOR

March! We're headed in a new direction this month with our inaugural **Charity Datebook**. In partnership with the Chester County Community Foundation, we are encouraging you to open your hearts, minds and wallets.

This has long been a passion project. Since buying *County Lines Magazine* over 12 years ago, Publisher Ed Malet and I have been impressed by the distinctive character of Chester Countians. Proud of their heritage, protective of their open space, and compassionate about their neighbors, people in this region are defined by their deep and broad support of philanthropic works.

This exciting issue is dedicated to highlighting just some of what makes this area so special to all who get to know it. We learn about the importance of legacy philanthropy and how private giving fuels medical research and miracles at places like the Children's Hospital of Philadelphia (CHOP) in "Pioneering a New Frontier in Medicine."

"Faces of Philanthropy" profiles nine area families—Brewer, Daley, Frees, Haas, Holleran, Riggs, Riper, Stanek and Zwann—who make significant contributions to charitable works supporting people and nonprofits, from basic needs for food and housing to enrichment from the performing and visual arts.


Enjoy "Fundraising Fun" with photos of those supporting good causes to help you choose what to attend this year from among the almost 100 galas, events and good times in our "Datebook Calendar." Read about auctions, wine tastings, road races, equestrian events and more.

You'll also find "Books That Inspire" by Wellington Square Bookshop's Mike Wall, "Getting Your Home Party Ready" by Assistant Editor Mercedes Thomas, "I'll Drink to That Good Cause" by Fred Naddeo of Fine Wine and Good Spirits, and "Recipes from The Hounds Foundation Charity Cookbook, *The Fox's Kitchen*" by Laura Muzzi Brennan in Brandywine Table.

We hope you'll be as inspired as we are by the good works that are a core value of our charitable region.

Thank you for reading this special issue.

And many thanks to our advertisers for their support.


Jo Anne Durako
Editor

COUNTY LINES MAGAZINE

March 2019

Volume XLI, Number 7

PUBLISHER

Edwin Malet

EDITOR

Jo Anne Durako

ART DIRECTOR / PRODUCTION

Alex Bianco

ASSOCIATE EDITOR

Marci Tomassone

ASSISTANT EDITOR

Mercedes Thomas

FOOD EDITOR

Laura Muzzi Brennan

ACCOUNT EXECUTIVES

Shelly E. Gill

Susan Gillespie

Sandy Mayer McCarthy

Greg McCarthy

Sue O'Hagan

BUSINESS MANAGER

Debra M. French

CONTRIBUTING WRITERS

Laurel Anderson

Leslie Finkel

George Fitzpatrick

Matt Freeman

Emily Hart

Carol Metzker

Fred Naddeo

Cindy Walker

CONTRIBUTING PHOTOGRAPHERS

Alix Coleman

Wil Moore

Andrew Seymour

Timlyn Vaughan

INTERNS

Caroline Fritz

Madison Meinel

Contact us at:

ValleyDel Publications, Inc.

893 S. Matlack Street, Ste. 150

West Chester, PA 19382.

610-918-9300. Info@ValleyDel.com

Subscriptions: \$39/year

To find *County Lines*, check our website's "Get A Copy" page, pick one up at Wellington Square Bookshop, West Chester Book Outlet and other newsstands, buy one at Wegmans, or visit advertisers listed in the Index.



County Lines Vol. XLI, No. 7. Copyright, 2019 by ValleyDel Publications. All rights reserved. *County Lines* and *County Lines Magazine* (ISSN 0195-4121) are registered names of ValleyDel Publications, Inc. Use of these names without the consent of ValleyDel Publications, Inc. may subject the infringer to penalty and suit as provided by law.

CountyLinesMagazine.com

Brandywine Fine Properties

Sotheby's

INTERNATIONAL REALTY



Hamanassett B & B

DARLINGTON ROAD | MEDIA | 6.6 ACRES

Historical property with Federal fieldstone mansion featuring a carriage house, cottage and barn in a prime location.



COLTSFOOT DRIVE | WEST CHESTER | 3.8 ACRES

Custom "Smart" home featuring gourmet kitchen, spa, wine cellar and fabulous outdoor entertainment area.



UPLAND ROAD | W. MARLBOROUGH TOWNSHIP | 109 ACRES

Grand estate nestled in a valley setting with stunning views of conserved land located in the heart of Cheshire Hunt Country.



ARROWWOOD LANE | CHADDS FORD | 1 ACRE

Custom home surrounded by 26 acres of protected open space with spacious gourmet kitchen and first floor master suite.



COMING IN
April

ANNUAL WEDDING ISSUE

From the Groom's Side • Wedding Venues

Spas and Salons • Dentists

Lancaster Focus • Spring Beer

Summer Camps • School Sports



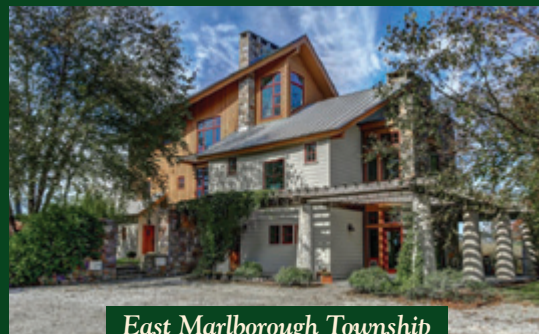
For more information on these fine properties, please contact:

Karen Nader 484.888.5597 | George Hobbs 302.545.5263



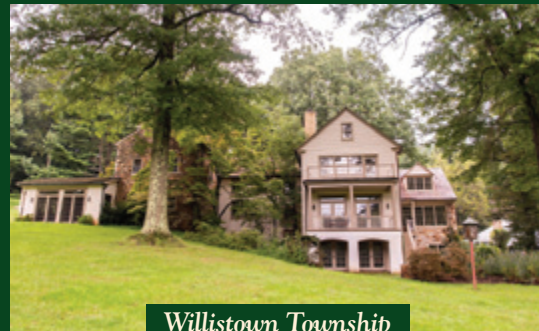
5701 KENNETT PIKE | CENTREVILLE, DELAWARE | 610.474.6520 | www.bfpsir.com





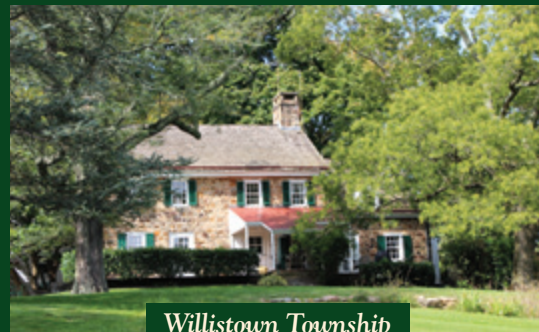
East Marlborough Township

Stunning example of green architecture in this 4BR home on 3.5+/- acs. of Jonathan Alderson designed landscape. 3 stall barn plus garage. Located in Unionville Chadds Ford School district. \$1,450,000



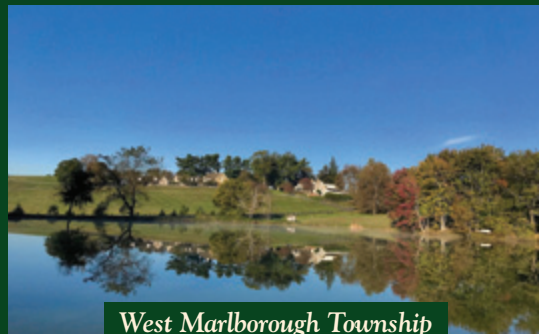
Willistown Township

"Little Valley Farm" with secluded location & uncompromising privacy. Restored & significantly expanded Chester County 5BR stone farmhouse on 21+ acres w/stone & frame bank barn. Price Upon Request



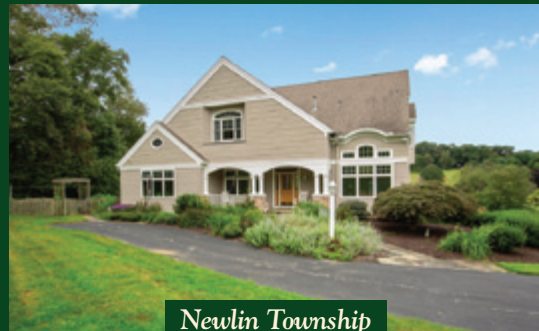
Willistown Township

Quintessential Chester County stone farmhouse on 19 acres. In need of TLC to bring back to full potential. Stone barn with garage attached. Under conservation easement. Price Upon Request



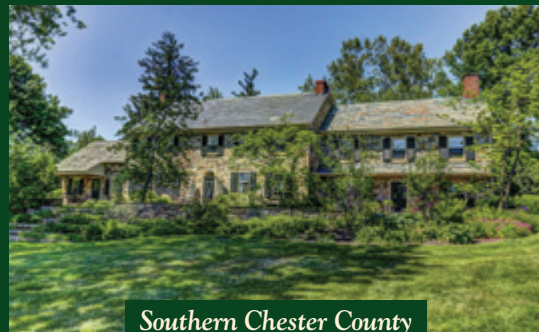
West Marlborough Township

"Whitehackle" Superb views with classic 1925 fieldstone manor. Large stone barn, 2 apts., pool, 2 ponds & outbuildings on 67+ acres in the heart of conserved Cheshire Hunt country. Price Upon Request



Newlin Township

Perched high atop a rolling hill on 3.20 acs, 4BR, 3.2B house filled w/light & exquisite long views with 1st floor sprawling master suite in the Unionville Chadds Ford School district. Price Upon Request



Southern Chester County

Classic stone home (c. 1738) w/5BRs including master bedroom. 6 stall barn, tack & feed room. 2BR apt. & 2 car garage. 45+/- acres with tennis court area in Cheshire Hunt countryside. Price Upon Request



**BERKSHIRE
HATHAWAY**
HomeServices
Fox & Roach, REALTORS



**COUNTRY
PROPERTIES**
ROUTE 82 & 162 - UNIONVILLE, PA 19375

Cindy Orr • Amy McKenna
Mark Willcox • Rob Van Alen
Jackie Roberts • Jody Vandegrift

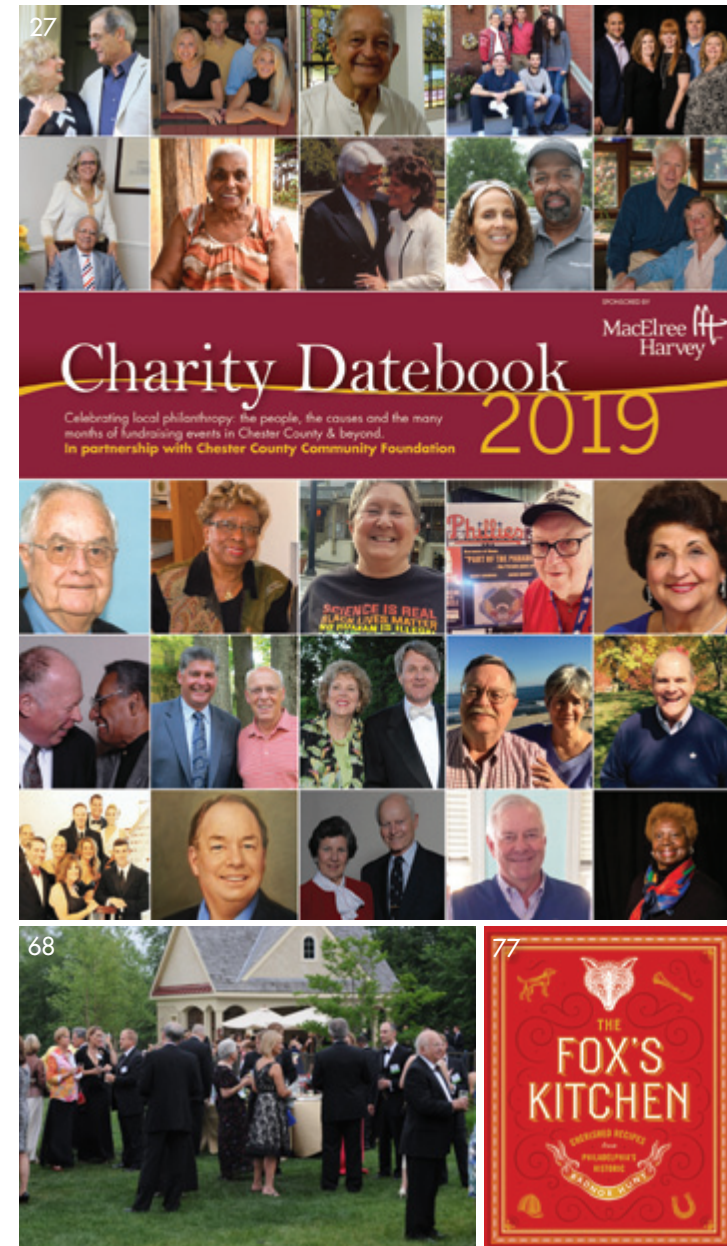
610.347.2065

View all our fine properties at www.TheCountryProperties.com

© BHH Affiliates, LLC. An independently operated subsidiary of HomeServices of America, Inc., a Berkshire Hathaway affiliate, and a franchisee of BHH Affiliates, LLC. Berkshire Hathaway HomeServices and the Berkshire Hathaway HomeServices symbol are registered service marks of HomeServices of America, Inc. © Equal Housing Opportunity. Information not verified or guaranteed. If your home is currently listed with a Broker, this is not intended as a solicitation.

CONTENTS

VOLUME 42, NUMBER 7 • MARCH 2019



- 27 2019 CHARITY DATEBOOK**
In partnership with the Chester County Community Foundation
- 2 FROM THE GUEST EDITOR**
An introduction and advice on giving
Karen A. Simmons
- 4 Pioneering a New Frontier in Medicine**
Philanthropy plays a vital role fueling breakthroughs in medical research.
Kathy Rubino, Children's Hospital of Pennsylvania
- 8 Faces of Philanthropy**
Profiles of legacy giving
Read how nine families have had an impact
- 17 What to Wear to the Gala**
Dress to sparkle
- 18 Fundraising Fun**
Wish you were there
Make plans to be there *this year!*
- 20 Charity Datebook Calendar**
Galas, fundraisers and events to fill your calendar
- 65 BOOKS THAT INSPIRE**
Lift your spirits with a good book.
Mike Wall, Wellington Square Bookshop
- 68 GETTING YOUR HOME PARTY READY**
Making your home the centerpiece for a charitable event
Mercedes Thomas
- 72 I'LL DRINK TO THAT GOOD CAUSE**
Celebrate good times while choosing these wines and spirits.
Fred Naddeo
- 77 BRANDYWINE TABLE**
Recipes from The Hounds Foundation
Charity Cookbook, *The Fox's Kitchen*
Laura Muzzi Brennan

departments

13 **GOOD TO KNOW**
15 **MARCH PICKS**

16 **BEST LOCAL EVENTS**
63 **REGIONAL ANTIQUES SHOWS**

75 **FOOD NEWS**
82 **INDEX**

Cover photo of Faces of Philanthropy from the 2019 Charity Datebook



SETTING THE STANDARD FOR 40 YEARS

Complete design services and fine craftsmanship
Custom barns, arenas, outbuildings and living quarters

1-888-354-4740 | www.kingbarns.com

HISTORIC PRESERVATION | CUSTOM HOME BUILDING | ADDITIONS | RENOVATION | KITCHENS & BATHS

BUILDING WITH PASSION.

E.C. Trethewey III
BUILDING CONTRACTORS INC.

DOWNINGTOWN, PENNSYLVANIA • 484.593.0334 • WWW.ECTBUILDERS.COM

[Good to Know] *Just a few things we'd thought you'd like to know this month*

Preservation Nation. Chester County celebrates **preserving its 500th farm** this month, leading the nation in farm and open space preservation. Owners Gerald and Cindy Rohrer are proud to add their 109 acres to the over 136,000 that have been preserved since the open space program began in 1989.



For landowners interested in this important cause, the deadline to apply is August 1st each year. Learn more at ChesCo.org/1368/Farm-Programs-Overview.

Criminally Good. Order in the court! The latest addition to local author **William L. Myers, Jr.'s** Philadelphia Legal series is sure to keep you guessing. *A Killer's Alibi* follows attorney Mick McFarland as he takes on a mysterious new client. Myers, a practicing attorney and Main Line resident, runs a regional law practice specializing in personal injury. His first book, *A Criminal Defense*, debuted on Amazon at No. 1 and was the No. 6 best-selling novel on Kindle for 2017. Grab your copy at your local independent bookstore.



Going with the Flow. Always remember to stay hydrated, and especially on March 22, **World Water Day!** Celebrate the pros of H₂O by donating to nonprofits like Water.org or CharityWater.org that help provide clean water to people around the world. According to Charitywater.org, 1 in 10 people don't have access to clean water. You can make a difference by volunteering at organizations like the Stroud Water Research Center, which has worked to steward freshwater systems since 1967. Check out StroudCenter.org/Jobs/Volunteer.

Street Smarts. Tune in to the new season of *Philly Revival* hosted by Chester County-born Rachel Street on HGTV and the DIY Network. A Temple University grad, Rachel works as a realtor and contractor, running a woman-owned construction company in addition to hosting her TV show. Follow the former opera singer as she tackles run-down or abandoned properties, renewing unique features while making room for improvements. Showtimes at DIYNetwork.com.



A New Leaf. What better way to celebrate this Earth Day than to go green? Improve your health along with your environmental footprint this spring by starting the **pegan diet**—a blend of the best of paleo and vegan diets. Surprisingly, the pegan diet is actually more moderate and healthier, not to mention cheaper, than most other trendy options. Experience the best of both worlds by eating fruit, vegetables, protein and the right fats. For ideas, visit Allrecipes.com/Pegan-Diet-Recipes.





DELAWARE ART MUSEUM

Fairy Tales to Nursery Rhymes

The Droller Collection of Picture Book Art

Climb into the magical world of children's literature through this stunning collection of more than 100 original and imaginative illustrations.

MARCH 2 – MAY 12, 2019

This exhibition is organized by The Eric Carle Museum of Picture Book Art, Amherst, Massachusetts. This exhibition is made possible in Delaware by the Edgar A. Thomson Foundation Illustration Exhibition Fund and the Hallie Tybout Exhibition Fund. Additional support was provided, in part, by a grant from the Delaware Division of the Arts, a state agency, in partnership with the National Endowment for the Arts. The Division promotes Delaware arts events on www.DelawareScene.com. Image: "Who are you?" said the caterpillar," 1983. Illustration for *Alice's Adventures in Wonderland* (Victor Gollancz Ltd, 1984). Justin Todd (born 1932). Gouache on illustration board, 11 3/8 x 8 1/2 inches. Collection of Michael and Esther Droller. © 1984 Justin Todd.

2301 Kentmere Parkway | Wilmington, DE 19806
302.571.9590 | delart.org

DONALD PELL | GARDENS

landscape design



www.donaldpell.com | 610.917.1385

March Picks

Our Picks for top events this month

Delaware Mineralogical Society's Earth Science Gem and Mineral Show.

March 2–3

See exhibits of minerals, lapidary and fossil specimens, displays from regional and university museums, fine dealers of minerals, fossils, gems, jewelry and lapidary supplies, plus



demonstrations and a kid's table. *Double-Tree* by Hilton, 4727 Concord Pk., Wilmington. Sat., 10 to 5; Sun., 11 to 5. \$4–\$6. 410-392-6826; DelMinSociety.net.

70th Annual Chadds Ford Art Show & Sale

March 22–23

Founded in 1949 by Betsy Wyeth, this popular show features works by over 60 local and regional artists from the Brandywine Valley and is Chadds Ford Elementary School's primary fundraiser supporting enrichment programs. *3 Baltimore Pk., Chadds Ford. Fri., complimentary reception and sale (adults only), 7 to 10 p.m. Sat., exhibit and sale (children welcome), 10 to 4. 610-388-1112; CFES. UCFSD.org/ArtShow.*



Media Theatre's 25th Anniversary Benefit Gala

March 30

Join the party in the Crystal Room for a reception and a one-night-only concert presentation, highlighting the productions over the last 25 years and directed by Artistic Director Jesse Cline. Celebrate the 25 year history of the Media Theatre and its many contributions to the town, borough and community. *104 E. State St., Media. \$150. 610-891-0100; MediaTheatre.org.*



Resident Theatre Company Presents *Dirty Rotten Scoundrels*

March 29–April 14



Based on the popular 1988 film, this play takes us to the French Riviera for high jinks and hilarity. Sophisticated and suave, this hysterical comedy features a delightfully jazzy score by David Yazbek (*The Full Monty*) and was nominated for eleven Tony Awards. *Uptown! Knauer Performing Arts Center, 226 N. High St., West Chester. For tickets and times, 610-356-2787; RTCWC.org. UptownWestChester.org.*

The Philadelphia Flower Show

March 1–10

Celebrate "Flower Power" and the enormous impact of flowers on our lives. Special events include: *Mar. 1, Preview Party—an elegant fundraiser with dancing and dining, 7 p.m., \$500. Mar. 2, Beatlemania, an evening of "flower power" and '60s-styled fun among the gardens, 8:30 p.m., \$85. PA Convention Center, 1101 Arch St., Phila. \$17–\$38. 215-988-8800; TheFlowerShow.com.*



best Local Events

FAMILY FUN

THROUGH MARCH,
Tuesdays

Story Time at Wellington Square Bookshop. Ages 1–5 enjoy songs and cookies and listen to stories come alive in the bookshop. 549 Wellington Square, Exton. 10 to 11 am. 610-458-1144; WellingtonSquareBooks.com.

THROUGH MARCH 3

The Snow Queen. This new musical is based on Hans Christian Anderson's story. Media Theatre, 104 E. State St., Media. Sun, noon. \$12–\$15. 610-891-0100; MediaTheatre.org.

MARCH 3

Brandywine River Museum of Art First Sundays for Families Series. Presenting free, hands-on workshops designed to engage visitors of all ages in creative art activities and performances. No registration necessary. 1 Hoffman's Mill Rd., Chadds Ford. 11 to 2. Free. 610-388-2700; Brandywine.org.



MARCH 7

Keswick Theatre Presents Pete the Cat. The story of Pete, the groovy blue cat who likes to rock out after bedtime. 291 N. Keswick Ave., Glenside. 10:30 & 12:30. \$16. 215-572-7650; KeswickTheatre.com.



MARCH 9

Longwood Gardens Presents OrKid Days. Explore orchids first hand at discovery stations, enjoy interactive story reading and join in a family seek-and-find in the orchid-filled Conservatory. 1001 Longwood Rd., Kennett Square. 9 to 5. Free with gardens admission, \$12–\$23. 610-388-1000; LongwoodGardens.org.

MARCH 9

Reading On The Rails at the Railroad Museum of PA. Hop on board for amazing stories from very special guests throughout the day. Kids even get their own cardboard suitcase and use it to travel from story to story. 300 Gap Rd. (Rt. 741), Strasburg. 9 to 5. \$8–\$10. 717-687-8628; RRMuseumPA.org.



MARCH 10

Landis Valley Village & Farm Museum Celebrates Charter Day. Celebrate Pennsylvania's birthday at Landis Valley with crafts, demonstrations and wagon rides. 2451 Kissel Hill Rd., Lancaster. Noon to 5 pm. Free. 717-569-0401; LandisValleyMuseum.org.



MARCH 14, APRIL 11

Books & Boots at Myrick Conservation Center. Children 3–5 listen as Potter the Otter reads a book to inspire the kids. Next, the story continues into a real-life, outdoor adventure. Adult participation optional;

snack provided. Register by the Wednesday before class. 1760 Unionville-Wawaset Rd., West Chester. 10 to 11:30. \$8. 610-793-1090; BrandywineRedClay.org.



MARCH 17–MAY 26, Sundays

Alice in Wonderland at The Media Theatre. A humorous and musical adventure based on Lewis Carroll's classic tale in which Alice follows the White Rabbit to a strange place where flowers sing and a wicked Queen of Hearts plays croquet in a very odd way. 104 E. State St., Media. Noon. \$12–\$15. 610-891-0100; MediaTheatre.org.

MARCH 23–24

The Cat Show is Coming! Top pedigree cats from around the country compete for Best in Show. Greater Philadelphia Expo Center, Hall E, 100 Station Ave., Oaks. Sat, 9 to 4; Sun, 9 to 3. \$3–\$8. CatShows.US/CatsIncredible/18Show.PDF.

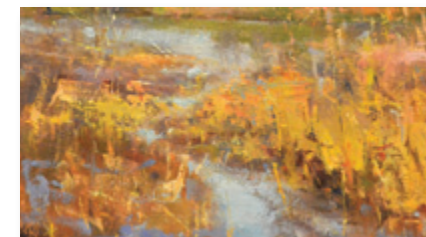
MARCH 24

Kennett Symphony Orchestra—Family Concert & Instrument Zoo. "The Places You'll Go" is the theme as the symphony takes you on a musical adventure as you listen to the musical clues of each piece to find out where you've traveled to. After the concert, children try out the instruments of the orchestra. Rustin High School Auditorium, 1100 Shiloh Road, West Chester. 2 pm. \$5. 610-444-6363; KennettSymphony.org.

ART, CRAFT & ANTIQUES.....

THROUGH MARCH 16

Wayne Art Center—Expressions of Radnor. Showcasing the talent of Radnor residents using all varieties of media. Wayne Art Center, 413 Maplewood Ave., Wayne. Mon–Fri, 9 to 5; Sat, 9 to 4. 610-688-3553; WayneArt.org.



MARCH 15–17

Sugarloaf Crafts Festival. More than 250 fine craftspeople will be on hand with their original, handmade contemporary works. Greater Philadelphia Expo Ctr., 100 Station Ave., Oaks. Fri–Sat, 10 to 6; Sun, 10 to 5. \$8–\$10. 800-210-9900; SugarloafCrafts.com.



BOOKS.....

MARCH 7, 20–21

Wellington Square Bookshop. Book Clubs: Nonfiction: Mar. 7, *Astrophysics for People in a Hurry* by Neil DeGrasse Tyson, 7 to 9. Fiction: Mar. 20–21, *I'll Be Your Blue Sky* by Marisa de los Santos. Wed–Thurs, 2 to 4; Thurs, 7 to 9. 549 Wellington Square, Exton. 610-458-1144; WellingtonSquareBooks.com.

BOAT SHOWS.....

THROUGH MARCH 3

The Atlantic City Boat Show. Celebrate life on the water. Climb aboard hundreds of boats for every budget and lifestyle. Atlantic City Convention Center, One Convention Blvd., Atlantic City, NJ. Wed–Fri, 11 to 8; Sat, 10 to 8; Sun, 10 to 6. \$16. 718-707-0716; ACBoatShow.com.

MARCH 1–4

Greater Philadelphia RV Show. New and exciting RVs. Greater Phila. Expo Center, 100 Station Ave., Oaks. Thurs–Fri, noon to 8:30 pm; Sat, 10 to 8:30; Sun, 11 to 5. \$11 (cash only). 800-290-6886; PhillyRVShow.com.

MARCH 8–10

Greater Philadelphia Boat Show. Visit with area dealers to shop and compare hundreds of boats. Greater Philadelphia Expo Center, 100 Station Ave., Oaks. Fri, 1 to 8; Sat, 10 to 7; Sun, 11 to 5. \$10, cash only; 16 and under, free. 804-748-7469; PhillyBoatShow.com.

DANCE.....

MARCH 8

WCU—Live! The National Dance Company of Ireland—"Rhythm of the Dance." This is a richly costumed show with step dancers, live

musicians, Irish singers and a *sean nós* dancer. Emilie K. Asplundh Concert Hall, 700 S. High St., West Chester. 7:30 pm. \$15–\$27. 610-436-2266; WCUPa.edu/Live.



LET US UNLOCK YOUR PROPERTY'S FULL POTENTIAL!

FLOWING SPRINGS

landscape design, inc.

Flowing Springs is made up of highly experienced craftsmen who design and build unique exterior environments for entertaining, special events, and peaceful outdoor settings. We've been serving the Main Line and surrounding areas for over 30 years!

SPECIALIZING IN

Patios • Walks & Stone Walls • Tree & Shrub Pruning
Decorating • Landscape Lighting • Total Property Maintenance
Custom Pools • Water Features • Natural Stone

610-408-0739
rtburns426@gmail.com

Richard T. Burns ~ Horticultural Designer, Owner

426 Old Conestoga Road, Malvern PA
www.flowingspringsdesign.com

PA 100172

BE SURE TO SEE THE 2019 CHARITY DATEBOOK IN THIS ISSUE FOR MORE EVENTS.

FILM.....
MARCH 1-2
Philadelphia Rock Gyms Present the Banff



Centre's Mountain Film Festival. From remote landscapes and cultures to the most exciting action sports, this is an exploration of the mountain world featuring climbing, skiing, kayaking and biking. Alumnae Hall, Immaculata University, King Rd., Malvern. 7:30 pm. \$17.45–\$20. 877-822-7673; PhilaRockGym.com.

FOOD & BREWS.....
THROUGH MARCH 3
Kennett Square's First-Ever Restaurant Week. Chefs and restaurant owners are putting together special menus and offerings to celebrate this first-of-its-kind event in Kennett Square. Also on tap

will be music at various venues around town and a culinary-themed art exhibit. You can dine in or take out, come for lunch, apps or dinner, enjoy traditional or more adventurous fare—there's something for every taste. Visit Historic-KennettSquare.com/Events/RestaurantWeek.



MARCH 2
13th Annual Philly Craft Beer Festival. Sample over 200 beers at this event named one of the "Top 10 Beer Festivals in America" by *USA Today*. Food trucks, free shuttle service and VIP session add to the day's festivities. Benefits the Committee to Benefit the Children. The Navy Yard, 4747 S. Broad St., Philadelphia. VIP Session, 12:30 to 5, \$75; general admission, 1:30 to 5, \$46. 631-940-7290; PhillyCraftBeerFest.com.



MARCH 2
Pittsburgh Invades Philly Beer Fest. Come out to enjoy beer from Dancing Gnome, Grist House, Voodoo, Eleventh Hour, East End, Yellow Bridge, Four Points and Insurrection Ale Works. Workhorse Brewing Company, 250 King Manor Dr., King of Prussia. 11 to 2:30. \$40. BreweriesInPa.com.

MARCH 24
Historic Sugartown—Wedding Traditions & Tea. Enjoy an afternoon tea at Historic Sugartown as you listen to a talk about wedding traditions highlighting the Victorian era from historian and speaker Jane Peters Estes. Historic Sugartown Carriage Museum, 273 Boot Rd., Malvern. 2 to 4. \$30. 610-640-2667; Historic-Sugartown.org.

APRIL 2-7
Media Restaurant Week. Select restaurants offer fixed priced menus, \$25–\$45. Reserva-

tions are suggested. Free street parking after 6. VisitMediaPA.com.



APRIL 6
4th Annual Rails & Ales at the Railroad Museum of PA. All aboard for a craft beer tasting event that includes food trucks, live music and historic trains. 300 Gap Rd. (Rt. 741), Strasburg. VIP hour: 6:30 to 7:30, \$50; 7:30 to 10:30 pm, \$40; designated driver, \$15. 717-687-8628; RRMuseumPA.org.



FUNDRAISERS.....
See also: The 2019 Charity Datebook in this issue.

MARCH 12
10th Annual Taste of the Main Line. Emergency Aid will hold it's 105th Anniversary celebration at The Bercy, 7 E. Lancaster Ave., Ardmore. \$105. 5:30 to 7:30. Taste of the Main Line returns next year. 610-896-7588; Taste-OfTheMainLine.com.



MARCH 28
ACT in Faith of Greater West Chester 7th Annual Chef's Best Event. Enjoy specialties from some of the area's best restaurants and cast your vote for the "Best of Chef's Best." Benefits ACT in Faith, an interfaith organization that seeks to empower un- and under-employed

West Chester residents. West Chester University Alumni & Foundation Center, 202 Carter Dr., West Chester. 6 to 9:30 pm. \$55. 484-324-8492; ACTInFaithGWC.org.

GARDENS.....
THROUGH MARCH 24
Longwood Gardens—Orchid Extravaganza. The conservatory transforms into a tropical oasis featuring an astonishing display of orchids. 1001 Longwood Rd., Kennett Square. 9 to 6. Timed tickets req., \$12–23. 610-388-1000; LongwoodGardens.org.



SV DENTAL

We treat every patient like family



Theresa M. Smith DDS
 Carlos E. Vila DDS

now accepting new patients

195 W. Lancaster Ave, Suite 1 Paoli, PA 19301

610.296.7797

WWW.SVDENTAL.COM

Come
BLOOM
 at...
 THE DEVON
 SENIOR LIVING



(610) 263-2300

445 N. Valley Forge Rd | Devon PA 19333

www.FiveStarSeniorLiving.com



Personal Care Memory Care Staycation

MARCH 17
March Into Spring Symposium: "Adventures in Botany." The Hardy Plant Society hosts a celebration of extraordinary horticulturists and



horticulture, with a program featuring keynote speaker, Dan Hinkley, who is always in pursuit of new botanical gems from around the world and in our own backyard. Delco Community College, Academic Bldg., 901 S. Media Line Rd., Media. 8:15 am to 3. \$85. HardyPlant.org.

MUSEUMS.....
THROUGH MAY 27
Brandywine River Museum of Art. Through May 12, "Phyllis Mills Wyeth: A Celebration."
Mar. 9–May 27, "American Beauty: Selections from the Richard M. Scaife Bequest." 1 Hoff-

man's Mill Rd., Chadds Ford. Daily 9:30 to 5. \$6–\$18. 610-388-2700; Brandywine.org.

THROUGH AUGUST 4
Delaware Art Museum. Mar. 2–May 12, "Fairy Tales to Nursery Rhymes: The Droller Collection of Picture Book Art;" **Mar. 23–Aug. 4,** "The Loper Tradition: Paintings by Edward Loper, Sr. and Edward Loper, Jr." 2301 Kentmere Pkwy., Wilmington. Wed, 10 to 4; Thurs, 10 to 8, free after 4; Fri–Sun, 10 to 4. \$6–\$12, Sun, free. 302-571-9590; DelArt.org.

MARCH 2–DECEMBER 30
Wharton Esherick Museum. The home/studio of Wharton Esherick, preserved much as it was when the artist lived and worked there. 1520 Horseshoe Trail, Malvern. Tues–Sat, 10 to 4; Sun, 1 to 4. \$8–\$15. 610-644-5822; Wharton-EsherickMuseum.org.

MARCH 30–JANUARY 5, 2020
Winterthur Museum, Garden & Library. "Costuming *The Crown*," featuring 40 iconic costumes from the award-winning TV drama. 5105 Kennett Pk., Winterthur, DE. Tues–Sun, 10 to 5. \$15–\$30. 302-888-4600; Winterthur.org.



MUSIC & ENTERTAINMENT.....
THROUGH MARCH
Uptown! Knauer Performing Arts Center. Mar. 8, Better Than Bacon Improv Comedy, 7:30; **Mar. 14,** Dueling Pianos, 7:30; **Mar. 15,** Kenny White, 7:30; **Mar. 17,** The Celtic Tenors, 2 & 7 pm; **Mar. 21,** Jazz Cocktail Hour: Mike Boone Quartet with jazz prodigy, Mekhi Boone, 6:30. 226 N. High St., West Chester. Checkwebsite for tickets and more listings. 610-356-2787; UptownWestChester.org.



THROUGH MARCH
Valley Forge Casino Resort. Comedy Club Presents: **Mar. 1,** Dustin Chafin; **Mar. 8,** Mike Cannon; **Mar. 15,** Kevin Brennan; **Mar. 22,** Joey Kola; **Mar. 29,** Women of a Certain Age. 1160 1st Ave., King of Prussia. Check-website for times and tickets. 610-354-8118; VFCasino.com.

THROUGH APRIL 4
The Keswick Theatre Presents. Mar. 2, Calling All Divas; **Mar. 3,** Alan Parsons Project Live; **Mar. 6,** The Monkees Feat Mike Nesmith and Micky Dolenz; **Mar. 8,** The Stars of Comedy: Ron Bennington, Jim Florentine, Robert Kelly & Rich Vos; **Mar. 9,** Tony Toni Toné & Jody Watley; **Mar. 10,** A Bowie Celebration: The David Bowie Alumni Tour; **Mar. 16,** Bert Kreischer Body Shots Tour; **Mar. 22–23,** The Musical Box Premieres a Genesis Extravaganza; **Mar. 29,** Los Lobos; **Mar. 30,** Saturday Night Fever–The Trammmps & The New York Bee-Gees; **Mar. 31,** Ruben Studdard Sings Luther Vandross; **Apr. 4,** Robin Trower. 291 N. Keswick Ave., Glenside. Check website for times and tickets. 215-572-7650; KeswickTheatre.com.



THROUGH APRIL 28
Murder Mystery Dinner Theater at Mount Hope Estate & Winery. An interactive, culinary "who-done-it." You'll enjoy a four-course meal as you become the detective—interrogate the suspects, put the clues together and uncover the truth. 2775 Lebanon Rd., Manheim. Check website for times. \$54.95. 717-665-7021; PArenFaire.com.



MARCH 3
Delaware County Symphony Concert. The program is called "Looking East." Neumann University, Meagher Theatre, One Newmann Dr., Aston. 3 pm. \$17–\$20. 610-879-7059; DCSCMusic.org.

MARCH 8, 28
Delaware Art Museum Performance Series. Mar. 8, "Lifted! Rennie Harris' Puremovement" merges high energy hip hop dance to the powerful rhythms of gospel and house music. The Grand Opera House, 818 N Market St., Wilmington. 8 pm. \$27–\$35. **Mar. 28,** Danny

Green Trio, a rising force on the jazz scene and an award-winning recording artist, pianist and composer. 2301 Kentmere Pkwy., Wilmington. 8 pm. \$25–\$35. 302-571-9590; DelArt.org.



AT GLEN MILLS SENIOR LIVING,
THERE'S ALWAYS TIME TO
**STOP AND
SMELL THE ROSES**

**GLEN MILLS
SENIOR LIVING**

242 Baltimore Pike
Glen Mills, PA 19342
610-358-4900

**EXPERIENCE OUR
LIFESTYLE**

- Personal care offering exceptional senior living experiences
- Five Star Dining Experience, featuring chef-prepared meals
- Lifestyle360 activities for well-rounded days

**Call 610-358-4900
to experience our
Five Star lifestyle
for yourself.**

www.GlenMillsSeniorLiving.com
**PERSONAL CARE
RESPITE/SHORT-TERM STAYS**



©2019 Five Star Senior Living



- Customized Medication Delivery Systems
- Bio-Identical Hormone Replacement
- Organic Groceries, Natural Health & Beauty Aids
- Private Consultations Available

CONSULTING PHARMACISTS ON STAFF
Michael Briggs, PharmD, CNC
Ben Briggs, RPh, CNC, IACP



Corner of Route 113 and Gordon Drive, Chester Springs
Monday-Friday 9-6, Saturday 9-5
For GPS: 200 E. Uwchlan Ave., Exton PA 19341
www.lionrx.com • Email: info@lionrx.com
Visit Us on Facebook and Instagram



610-363-7474

How to Achieve a Gold Medal Garden...

Start with High Performance Plants from Mostardi!

We stock flowers, shrubs and trees that are recommended by the Pennsylvania Horticultural Society's "Gold Medal Award" program.

- Gorgeous Colors
- Exceptional Values
- High Quality
- Superior Performance

Expect the best from Mostardi plants. They are good as gold!



MOSTARDI

N U R S E R Y

4033 West Chester Pike (Rte.3)
Newtown Square, PA 19073
610-356-8035 • www.mostardi.com

WESTTOWN SCHOOL

INNOVATION DAY

Who: 3rd - 5th graders

When: Sunday, April 14, 2019

What: An integrated day of design, invention, and collaboration.

Where: Westtown School Science Center

Open To All: Registration Required
westtown.edu/innovation

DESIGN * BUILD
* MAKE *

MARCH 9

Darlington Arts Center Coffee House Concerts. Belfast Connection, Irish folk music. 977 Shavertown Rd., Garnet Valley. 8 pm. \$15. 610-358-3632; DarlingtonArts.org.

MARCH 22

Point Entertainment Presents. Multi-Grammy award winner and Texas roadhouse rocker Delbert McClinton performs at The Colonial Theatre, 227 Bridge St., Phoenixville. 8 pm. \$42.50-\$49.50. 610-917-1228; TheColonialTheatre.com.



MARCH 22

Community Arts Center Friday Night Live Concert. Kind of Blue-N'awlins Style. Carnivaling the 60th anniversary of Miles Davis' album "Kind of Blue" featuring Bart Miltenberger and Rev. Chris. 414 Plush Mill Rd., Wallingford. 7 to 10. \$5-\$15. 610-566-1713; CommunityArtsCenter.org.

APRIL 5

WCU—Live! Rumours: A Fleetwood Mac Tribute. A recreation of the legendary band from 1975-1979, from period accurate equipment and costumes to characterizations and musical performances. Emilie K. Asplundh Concert Hall, 700 S. High St., West Chester. 7:30 pm. \$15-\$27. 610-436-2266; WCUPa.edu/Live.



APRIL 7

Delaware County Symphony—A Chamber Ballet Concert. The Chamber Symphony along with the Academy of International Ballet performs *Carnival of the Animals* by Camille Saint-Saëns. Neumann University, Meagher Theatre, One Neumann Drive, Aston. 3 pm. \$15. 610-879-7059; DCSCMusic.org.



APRIL 7

WCU—Live! Tamagawa University Taiko Drumming and Dance. Nearly 30 drummers and dancers make a return appearance for an athletic and graceful performance. Emilie K. Asplundh Concert Hall, 700 S. High St., West Chester. 7:30 pm. \$12-\$17. 610-436-2266; WCUPa.edu/Live.

APRIL 7

Kennett Symphony Orchestra Concert. "Classically Yours" featuring *Siegfried Idyll* by Wagner, Tchaikovsky's *Variations on a Rococo Theme* and Mozart's *Symphony No. 40*. Longwood Gardens Exhibition Hall, 1001 Longwood Rd., Kennett Square. 7:30. \$10-\$50. 610-444-6363; KennettSymphony.org.

APRIL 12-14

Wilmington Winter Bluegrass Festival. Three days of great bluegrass music on two stages, workshops and jam sessions. Crowne Plaza Hotel, 630 Naamans Rd., Claymont. \$10-\$65. Check website for line-up and times. WilmingtonWintergrass.org.

OUTDOOR ACTIVITIES.....

MARCH 16

6th Annual Conshohocken St. Paddy's Day 5K Classic. Run or run/walk along a scenic course. There are refreshments, water stations, prizes, post-race St. Pat's Day party and a parade. Benefits Conshohocken Fire Co. #2. Starts and finishes at the fire company, 8th and Fayette Sts. 1 pm. \$20-\$35. Rain date, Mar. 23. 610-527-5510; BrynMawrRacing.com.

MARCH 21

The Land Conservancy for Southern Chester County Supermoon Hike and Bonfire. Take a moonlight walk through the meadows and

woods of Stateline Woods Preserve and then enjoy a selection of adult beverages, hot chocolate and snacks by the bonfire. Ring in the spring constructing a wind chime—kids activities, too. 814 Merrybell La. (950 for GPS), Kennett Square. 7 to 9. \$10-\$15, under 12, free. 610-347-0347 x 104; TLCForSCC.org.

THEATER.....

THROUGH MARCH 31

Nina Simone: Four Women. Christina Ham's new play imagines a chance encounter between the legendary songstress and a trio of women

at the site of the historic 16th Street Baptist Church bombing. People's Light, 39 Conestoga Rd., Malvern. \$30-\$53. Check website for times. 610-644-3500; PeoplesLight.org.

MARCH 11, 16

WCU—Live! Missoula Children's Theatre Presents The Pied Piper. The Children's Theatre company recruits more than 50 local students to take part in an original musical adaptation. **Mar. 11**, auditions at Emilie K. Asplundh Concert Hall, 4:30. **Mar. 16**, performances, Emilie K. Asplundh Concert Hall, University Ave. & S. High St., West Chester.

Two Options – One Community



Enjoy sunsets from the rooftop deck and countryside vistas from your balcony with Pleasant View's newest campus expansion, featuring thirty-six spacious apartments.

Or, experience a new, urban alternative to traditional retirement community living in Downtown Lititz. A short drive from Pleasant View's main campus, thirty-two contemporary apartments will be steps away from bustling restaurants, independent retail shops, and the historic Lititz Springs Park.

Both campuses offer carefree living, convenient access to major highways and hospital systems, and the security of having Pleasant View's continuum of services available when needed. Call today to reserve your view!

PLEASANT VIEW
RETIREMENT COMMUNITY

544 North Penryn Road, Manheim, PA
www.PleasantViewrc.org | 717-664-6644

Discover the

Wealth

of differences from
your community's bank.



MEET KURT KUNSCH, SVP

Wealth is managed best by people you know, institutions you trust and a bank that has the community's back.

Your Community's Bank.™
www.PhoenixFed.com | 610.935.8304

PHOENIXVILLE FEDERAL BANK & TRUST
Wealth Management

Investments | Retirement Planning | Trust & Estate Services

Investments are not FDIC insured. May lose value. No bank guarantee.

GREYSTONE HALL

A Destination Setting in the Brandywine Valley

For Your Next Special Event;
Your Enchanted Evening...





Weddings • Receptions
Corporate • Gatherings

610.696.1272
www.GreystoneHall.com • Info@GreystoneHall.com

2 and 5 pm. \$7-\$10. 610-436-2266; WCUPa.edu/Live; MCTInc.org.

MARCH 13-31

Beehive: The 60s Musical. A musical tribute to the women who made the music of the era so special—from Lesley Gore to Janis Joplin, from the Shirelles to the Supremes, Aretha Franklin to Tina Turner. Media Theatre, 104 E. State St., Media. Check website for show times and tickets. 610-891-0100; MediaTheatre.org.



TOWNS, TALKS & TOURS.....

MARCH 1, 9, 21

First Fridays, Second Saturdays, Third Thursdays. **Mar. 1**, First Fridays: **Kennett Square Art Stroll**, 610-444-8188; HistoricKennettSquare.com. **Lancaster City**, 717-509-ARTS; VisitLancasterCity.com. **Oxford**, 610-998-9494; DowntownOxfordPA.org. **West Chester**, 610-738-3350; West-Chester.com. **Wilmington Art Loop**, 302-576-2135; CityFestWilm.com.

Mar. 9, Second Saturday Arts Stroll: **Media**, 484-445-4161; MediaArtsCouncil.org.

Mar. 21, Third Thursday Malvern Sip & Stroll, MalvernBusiness.com.

MARCH 2

Chester County Fund for Women and Girls—"Girls in Action Summit." Bringing together high school girls for an empowering day of action, attendees will learn about taking action in their communities to foster change. Business & Public Management Center at West Chester University, 50 Sharpless St., West Chester. 9 to 4. Free. 484-356-0940; CCFWG.org.

MARCH 22

Chadds Ford Hist. Society Tavern Talks. Hugely popular series for adults, focusing on early American history and culture with activities, food and drinks. This month, "Liberty and Libations." Barns Brinton House, 6030 Baltimore Pk., Chadds Ford. 7 to 9. \$15-\$20. 610-388-7376; ChaddsFordHistory.org. ♦

Stay in the know with everything going on in *County Lines* country. Sign up for our Events Newsletter (sent twice monthly) at Newsletter@ValleyDel.com

Send a description of your activity to Info@ValleyDel.com by the first of the month preceding publication.

For more events visit:

CountyLinesMagazine.com

Experienced.
Respected.
Responsive.

Get to Know Gawthrop
for Planned Giving



Gawthrop Greenwood, PC
Attorneys at Law

- Estate Planning
- Tax Planning
- Succession Planning
- Estate & Trust Administration

17 East Gay Street | Suite 100 | West Chester, PA 19381 | 610-696-8225 • 3711 Kennett Pike | Suite 100 | Greater Wilmington, DE 19807 | 302-777-5353

Congratulations to the Chester County Community Foundation on 25 YEARS of Philanthropy!



25th Anniversary Benefit March 30

Join us on Saturday, March 30, 2019 to celebrate the 25 year history of the Media Theatre and its many contributions to the town, borough, and community.

Enjoy a one-night-only concert, elegant catered reception, silent and live auctions, and awards ceremony for Delaware County's Jack Holefelder.

MediaTheatre.org for more information
610-891-0100 • 104 E. State Street, Media, PA

Elverson

Antique Show & Sale

March 23 & 24, 2019
Twin Valley High School

50th year

SATURDAY, 11 am to 5 pm
SUNDAY, 11 am to 4 pm
Admission per person: \$7.00
\$6.00 with this ad

Twin Valley High School
4897 North Twin Valley Rd.
Elverson, PA



*Arthur Hall Insurance
is committed to
supporting those
that give and receive.*



ArthurHall | Advisor. Advocate. Agent.
INSURANCE

Talk to us about insuring all that you value

West Chester PA • 610.696.2394 | Hockessin DE • 302.658.0100 | Sparta NJ • 609.681.4040

www.arthurhall.com

CONGRATULATIONS TO THE CHESTER
COUNTY COMMUNITY FOUNDATION
ON ITS SILVER ANNIVERSARY. WE
APPRECIATE YOUR 25 YEARS OF SERVICE
TO OUR COMMUNITY CONNECTING PEOPLE
WHO CARE WITH CAUSES THAT MATTER!



Serving the Legal Needs of Chester County for 50 Years



Wills & Trusts / Estate Administration
Real Estate / Business / Banking
Personal Injury / Civil Litigation
Healthcare Law
Municipal / Governmental Law
Land Use Law

Anthony Morris, Chair, Chester County Community Foundation

West Chester, PA | 610.436.4400 | www.BuckleyLLP.com



SPONSORED BY

MacElree Harvey

Charity Datebook 2019

Celebrating local philanthropy: the people, the causes and the many
months of fundraising events in Chester County & beyond.

In partnership with **Chester County Community Foundation**



From the Guest Editor



COUNTY LINES
MAGAZINE

We are thrilled with our partnership with *County Lines Magazine* for this inaugural Charity Datebook! When *County Lines'* editor and co-owner, Jo Anne Durako, met with me at the Chester County Community Foundation office about a special publication highlighting regional philanthropy, we were off and running!

We were both eager for the opportunity to showcase individuals and families with longtime community involvement, highlight local charity events, and inspire and celebrate the spirit of giving in Chester County and beyond. This special issue focusing on legacy philanthropy in our region is the result.

You might be wondering, 'What is legacy philanthropy and why does it matter?' Delve into this issue to learn how all kinds of people make a difference in the communities where we live, work and play. Librarians, educators, lawyers, doctors, insurance professionals, business people, entrepreneurs, actors and homemakers ... people from all walks of life give their time, talent and treasure every day. And they also plan long-term, deciding to arrange for charitable gifts that will last far beyond their lifetimes and impact our community for perpetuity.

For 25 years, the Chester County Community Foundation has focused on long-term legacy philanthropy, so charitable assets are available to help nonprofits thrive in challenging as well as prosperous economic times. The Community Foundation has proudly awarded nearly \$40 million through 9,500 grants and scholarships, thanks to many of the people profiled in this issue. This effort is truly connecting people who care with causes that matter, so their legacy makes a difference, now and forever.

As with any anniversary, this is a time to look back and reflect on where we came from and where we plan to head in the future. We invite you to join us on this journey to celebrate, inspire and grow legacy philanthropy.

We trust this issue will warm your heart and inspire you to change the world — starting in your own backyard!

Onward!

Karen Simmons

Karen Simmons

PRESIDENT/CEO CHESTER COUNTY COMMUNITY FOUNDATION



Chester County Community Foundation personnel (Karen Simmons, second from right)



*Let your legacy
make a difference
in Chester County*

Give Smart and Make Your Philanthropic Impact Last

Some advice on how to make sure your donation is effective

Our world is full of good. As partial evidence of that good, there are—

800 registered nonprofit charities in Chester County,

8,000 in the Delaware Valley,

13,000 in Pennsylvania and

1.5 million in the United States.

These nonprofit charities strengthen our communities by providing much needed health and human services, educating our minds, enlightening our spirits, strengthening our bodies, advancing scientific and medical research, and protecting our environmental resources and historic treasures, among other good works.

So how can you ensure your charitable donation to these groups will be used wisely? How can you identify legitimate charities that do cost-effective, impactful, good work?

Doing due diligence before you donate is key. Here are two preliminary levels of inquiry:

- 1st there's compliance: Is the charity registered properly at the state and federal levels?
- 2nd is performance: Does the charity's work make a significant positive difference, at a cost that's reasonable?

Determining compliance is easy. In Pennsylvania, most charities that solicit donations must register with the Pennsylvania Department of State. You can contact the DOS to verify that a charity is registered by calling 800-732-0999 or checking online at DOS.PA.gov/BusinessCharities/Charities/. (Note: religious organizations are exempt from state and federal registration.)

To help assess performance, begin with the website Candid.org. Formerly known as GuideStar, this free national database works in cooperation with the IRS, the Better Business Bureau Wise Giving Alliance, and the Foundation Center. Here you can find IRS Form 990 tax returns of charities throughout the U.S., along with information on the charity's programs, financials, leadership and operations.

Online research is a start. But there's more. Making site visits to nonprofits helps you see, touch, smell and feel what's going on, who's involved with the organization, and what the core operating principles are that underlie key decisions and actions. Asking questions helps you understand how much of the group's budget provides for programs and services, compared to fundraising and administration. Looking into the nonprofit organizations' history, performance and challenges can help you analyze key areas and compare how you and the nonprofit charity measure performance and impact.

We urge everyone to give generously and wisely so your charitable legacy makes a difference, now and forever. Get involved. And Give Smart to make your philanthropic impact last. ♦



Lincoln Building, West Chester
home of the Chester County Community Foundation

PIONEERING A NEW FRONTIER IN MEDICINE

Kathy Rubino
Children's Hospital of Pennsylvania

Philanthropy plays a vital role fueling breakthroughs in medical research.

// **OUR DAUGHTER IS LUCKY TO BE ALIVE,"** SAYS Marti of her daughter, Georgia. "And we were lucky to be in the hands of a team of pioneers."

Indeed, the precocious 11-year-old is fortunate to have survived not just the initial impact of a devastating ATV accident, but also the grueling aftermath.

Vacationing in Montana, Georgia's family booked an ATV tour their first day. Almost immediately, tragedy struck. The vehicle veered off course in a tunnel passage and flipped, pinning Georgia. Local doctors treated her for five broken ribs, a broken collar bone, severe bruising and contusions, and a concussion.

A few days later, though her bones were slowly healing, a serious problem remained. Georgia's right lung was filled with fluid. Testing showed the fluid came from a source that remains mysterious to the vast majority of doctors—the lymphatic system.

As complex and important to overall health as the cardiovascular system, the workings of the lymphatic system have eluded medical science for generations. Much of that mystery stemmed from our basic inability to see the winding pathways and circuitous vessels that direct the flow of lymphatic fluid.

Thanks to the leadership of Yoav Dori, MD, PhD, cardiologist and Director of the Center for Lymphatic Imaging and Interventions at Children's Hospital of Philadelphia (CHOP), as well as early collaborators at the Hospital of the University of Pennsyl-

vania, all of that is changing. Dr. Dori and his team developed clinical imaging capabilities that shed light on this little-known system, enabling the delivery of more accurate diagnoses and more effective treatments. They've revealed an entirely new branch of medicine—and have now treated more than 250 patients who had nowhere else to turn.

"The experts told us Dr. Dori was the only person in the country who could handle Georgia's condition," Marti says. A medical flight to Philadelphia was quickly arranged. At CHOP, Dr. Dori used the advanced imaging technique he'd pioneered to show that the injury to Georgia's collar bone had created a significant gash—right above her heart—that had torn her thoracic duct.



Georgia's thoracic surgery had a successful outcome thanks to the ground-breaking imaging techniques pioneered by Dr. Dori and his team at CHOP.

The team used a minimally invasive surgery they'd perfected to close the gash, stop the leak and allow Georgia to fully heal.

Georgia has since made a complete recovery. In fact, she competed in a horse show last June and recently had a starring role in her school's production of *Shrek*.

"We are forever grateful for people who are able to think outside the box and come up with innovative treatments like this," her family explains.

DRIVING INNOVATIVE CARE THROUGH PHILANTHROPY

But it's not just brilliant physicians and innovative researchers who should be thanked for "miracle" treatments like the one that saved Georgia's life. What few realize is the vital role philanthropy plays in fueling breakthroughs in medical research and advancing revolutionary new care models.

In fact, many hospitals rely on donor support to provide seed funding that can lead to "proof of concept" for projects that hold immense future promise.

Entities such as pharmaceutical companies and medical manufacturers—which sometimes fund work with clear commercial applications—generally decline to support research in its early stages, deeming such investment too risky. The National Institutes of Health (NIH) also rarely provide grants to fund novel theories.

Further, due to budget constraints, NIH funding for research declined by more than 22% between 2003 and 2015, representing a loss of nearly \$10 billion in constant dollars. Today, funding remains 11% below its peak in 2003.

Compounding this decline, just 4% of NIH grants support pediatric medical research. Private charitable giving bridges that gap, providing a vital pathway from fledgling research to clinical care and

empowering researchers' efforts to develop new and innovative therapies.

Frankly, Dr. Dori's work, and little Georgia's recovery, might not have been possible without the support of visionary philanthropists such as the Chappell Culpeper Foundation.

John Chappell, a longtime resident of Malvern, serves as a board member for the foundation his daughter, Jennifer Paradis Behle, manages. Together they aim to create a permanent and positive shift in the trajectory of individuals' lives through the support of education and healthcare.

Mr. Chappell and his family chose to support lymphatics research because of its novelty and what he describes as the obvious early success of Dr. Dori and his team to realize clinical benefits from their leading-edge research. The Chappell Culpeper Foundation's investment helped underpin CHOP's extraordinary efforts to unlock the mysteries of previously uncharted territory within us.

"We feel very fortunate to be involved in this invaluable work," says Mr. Chappell.

SEEKING BREAKTHROUGHS FOR THE TINIEST PATIENTS

Judy Barsema's passion, on the other hand, took a different direction. Barsema,

who lives in Kennett Square, was initially inspired to give to CHOP because she relished the opportunity to help children and families facing grave illness.

The mother of two and grandmother of five made her first gift to CHOP in 2008, and continued to support the general fund in modest increments for nearly a decade.

Then, she learned about CHOP's innovative work to revolutionize care for extremely premature infants. Knowing that every dollar matters, she felt compelled to give more in support of this groundbreaking research.

Currently, of the one in 10 U.S. births that are premature, about 30,000 per year are critically preterm—younger than 26 weeks. Infants born near the limit of viability—at 22 to 26 weeks gestation—weigh as little as a bottle of water, and are so small they fit in a mother's hand. Fewer than half survive.

Of those who do survive, 90% suffer sickness and disability, such as lung disease, cerebral palsy, blindness and brain damage. Surgeons and neonatologists at CHOP witness the effects of prematurity every day. Now, a team of them has innovated a system that could change the future for these vulnerable babies.

Alan W. Flake, MD, Director of the Center for Fetal Research in the Center



A team led by Alan Flake, MD, (center) has created a device that could transform care for extremely premature infants.

for Fetal Diagnosis and Treatment, and his colleagues have developed a revolutionary device that mimics the prenatal, fluid-filled environment of the womb, giving tiny newborns a few precious extra weeks to develop their lungs and other organs.

“Extremely premature infants have an urgent need for a bridge between the mother’s womb and the outside world,” says Dr. Flake. “If we can develop an extra-uterine system to support growth and organ maturation for only a few weeks, we can dramatically improve outcomes for extremely premature babies.”

The system they’ve pioneered mimics life in the uterus as closely as possible. There’s no external pump to drive circulation, because even gentle artificial pressure can fatally overload an underdeveloped heart. There’s no ventilator, because the immature lungs are not yet ready to do their work of breathing in atmospheric oxygen.

Instead, the baby’s heart pumps blood through the umbilical cord into the system’s low-resistance external oxygenator that exchanges oxygen and carbon dioxide, effectively substituting for the mother’s placenta.

The team has tested and monitored the new system on fetal lambs, whose prenatal lung development is very similar to humans’. If their results translate to clinical care, Dr. Flake envisions that in just a decade from now extremely premature

infants will continue their development in comforting womb-like chambers filled with amniotic fluid rather than lying in incubators, attached to ventilators.

Besides significant health benefits, there could be a tremendous economic impact, reducing the estimated \$43 billion annual medical costs of prematurity in the U.S.

“The idea of replicating the womb really caught my attention,” Ms. Barsema says of her contributions to fetal research. “Anyone who’s had a baby understands how special that system is. I am in awe of how far our doctors have come in that field and many other fields. It’s truly astounding.”

REVOLUTIONIZING CARE FOR DEADLY CANCERS

At age 13, Mitch began to get sick frequently and to complain of pain in his legs. The pain became so intense that his parents took him to the emergency room at their local hospital in Spokane, Washington. He was diagnosed with an aggressive form of acute lymphoblastic leukemia (ALL).

Years of treatment followed, punctuated by disappointment after disappointment. In November of 2014, after Mitch’s second relapse, tests showed his leukemia had progressed into his brain.

His mom, Kari, remembers the day like it was yesterday. “His doctor said, ‘Mitchell, we can buy you some time, but there’s nothing else I can do for you.’”



“None of us were ready to be done fighting,” says Kari. “My husband Rob and I had read the story of the very first child who’d received immunotherapy at CHOP. So I picked up the phone.”

Chimeric antigen receptor T (CAR-T) cell therapy is a breakthrough treatment that genetically modifies a patient’s own immune cells to make them seek out and kill leukemia cells. The approach was developed in a collaboration between CHOP and a team led by Carl June, MD, a professor of Pathology and Laboratory Medicine in the Perelman School of Medicine at the University of Pennsylvania and Director of the Center for Cellular Immunotherapies in Penn’s Abramson Cancer Center. CHOP was the first institution to use the therapy in children with leukemia.

In a landmark decision in 2017, the U.S. Food and Drug Administration (FDA) approved the revolutionary treatment—called Kymriah and now manufactured by Novartis—for children and young adults with treatment-resistant acute lymphoblastic leukemia (ALL).

For these kids, CAR-T cell therapy results in an 82% remission rate within three months after a single infusion, and 62% remain in remission for two or more years.

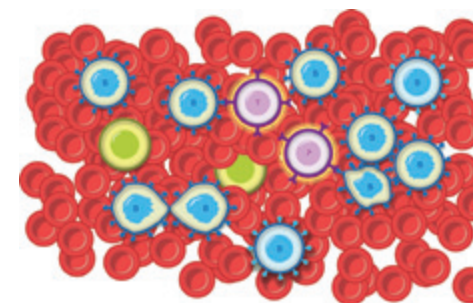
“Before this personalized, cellular gene therapy, these patients had about a 10% chance of surviving,” says Stephan Grupp, MD, PhD, Director of the Cancer Immunotherapy Program and Section Chief of Cell Therapy and Transplant at CHOP, and a Professor of Pediatrics in the Perelman School of Medicine at the University of Pennsylvania. “To see this 82% remission rate is beyond what we would ever have imagined.”

When Mitch and his family arrived in Philadelphia, Dr. Grupp met with them to discuss the procedure, explaining that the treatment had never been tried on anyone with the degree of brain leukemia Mitch had. Feeling it was worth the risk, Mitch then received his first dose of reengineered T cells.

The family had been warned Mitch might have a strong reaction to the treatment. As the T cells multiplied and attacked the leukemia, the affected areas, including his brain, became inflamed. Mitch soon spiked a fever, then began to experience neurological difficulties. He lay in a coma for five days.

On the fifth day, in the middle of the night, with Kari standing by his side and Rob at the foot of his bed, Mitch fluttered his eyes open and said, “Hi, Dad.”

Today, Mitch is in college, studying for a career in medical social work. He’s been cancer free for nearly four years.



Chimeric antigen receptor T (CAR-T)

This ultimate result may not have been possible were it not for years of investments in cancer research from individuals and families. Families like the Edwards who, tragically, lost their own son to brain cancer in 2002 at the age of 14.

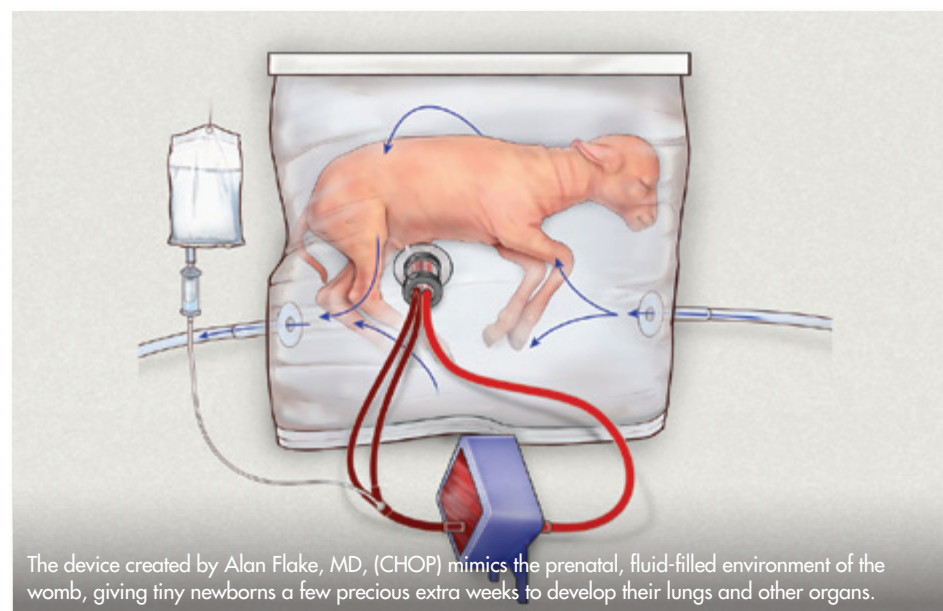
Like Mitch, Stanley Edwards loved playing sports and spending time with friends. And, he dreamed of going to college one day. Stanley didn’t live long enough to fulfill his dream.

Determined to honor his legacy, his parents, Donna and Stan Edwards of West

Chester, launched Stanley’s Dream through the Chester County Community Foundation to support cancer research, and to ensure that other children would have opportunities Stanley never did. They’ve supported neuro-oncology research at CHOP for the last 12 years.

“We are committed to helping other children and parents look forward to a brighter future,” says Donna. “We know, by giving back, we can make a difference.” ♦

Children’s Hospital of Philadelphia was founded in 1855 as the nation’s first pediatric hospital. Through its commitment to providing exceptional patient care, training new generations of pediatric healthcare professionals and pioneering major research initiatives, CHOP has fostered discoveries benefiting children worldwide. Its pediatric research program is among the largest in the country and its family-centered care and public service programs have brought the hospital recognition as a leading advocate for children and adolescents. CHOP.edu



The device created by Alan Flake, MD, (CHOP) mimics the prenatal, fluid-filled environment of the womb, giving tiny newborns a few precious extra weeks to develop their lungs and other organs.



Marcus Davey, PhD— shown here with research technician Grace Hwang— helped lead the round-the-clock effort to create the artificial womb.



The Brewer Family

HELPING LOCAL FAMILIES FULFILL BASIC NEEDS THROUGH THE CLAY-MIR FOUNDATION



In 1995, after a 10-year career in the security industry, Frank Brewer decided to launch his first entrepreneurial venture.

Under Frank's leadership, the newly founded Security Services and Technologies company was quickly rec-

ognized by *Inc. Magazine* as one of America's 500 Fastest Growing Companies in 1996, 1997 and 1999.

Closer to home, in 1998 the *Philadelphia Business Journal* named Frank one of the Top 40 Business Leaders Under 40.

Frank went on to serve as CEO of FirstService Security. A serial entrepreneur, Frank next founded NexGen Security LLC in Exton in 2013.

Starting with humble beginnings, Frank and his wife, Lori, have always wanted their family to remain grounded despite their financial success. "For us," explains Lori, "giving back was the answer."

The Clay-Mir Foundation—named after their son, Clayton, and daughter, Miranda—was created at the Chester County Community Foundation with legacy philanthropy in mind.

Through their volunteer activities, board service and Clay-Mir Foundation grants, the Brewer family focuses on helping local families and children fulfill basic needs for food, clothing,

shelter and education.

Despite being barely teens when their family foundation was created, both Clayton and Miranda were involved from the start.

Now married, daughter Miranda is clear, "Helping people in need—those we have never even met—simply makes me feel good. I'm making a difference."

Clayton adds, "Through the Foundation, we realized that philanthropy is a powerful investment with a long-lasting, ripple impact." Recently, Clayton and his wife, Kate, welcomed baby Bellamy Lorelei into the family marking the start of a new generation.

The Brewer family is clear that one day, this third generation will also be involved in making an important difference in the community—for good, forever.

**THE BREWER FAMILY
EXEMPLIFIES HOW
FAMILY VALUES, COMMUNITY
SPIRIT AND ENTREPRENEURIAL
SUCCESS CAN LEAD TO
MEANINGFUL ALTRUISM AND
COMMUNITY DEVOTION.**

The Daley Family

THE FAMILY FOUNDATION'S GRANTS REFLECT THE INTERESTS OF EACH MEMBER.

In the Daley family, giving to others is as normal as breathing.

By way of background, Carol Ann, the youngest of the three Daley siblings, explains: "My dad's parents were from Ireland. As a child, he would sometimes find a stranger or two at the breakfast table. These strangers would turn out to be friends or relatives who'd just arrived from Ireland. Our grandparents served as sponsors: they opened their home, offered a place to stay, and helped these strangers find their way when they first came to America."

Middle child Chuck continues, "Growing up, we were used to seeing our parents help others in need. I remember a Flyers game where Dad and I were in the fan shop. Dad struck up a conversation with a veteran who was looking longingly at game jerseys. Turned out, Dad purchased a jersey for the veteran and thanked him for his sacrifices for our country."

Eldest daughter Kanya adds another memory: "Dad heard about a local shelter that didn't have money for enough turkeys for Thanksgiving. So Dad went to the shelter, checkbook in hand,

to ensure holiday meals for many people in need."

When their father Charlie passed away in 2013, the three Daley siblings became more involved in managing the grantmaking decisions from their family's charitable fund.

The grants awarded by the Daley Family Foundation at the Chester County Community Foundation speak volumes about the varied interests and experiences of each family member:

- Kanya supports non-profits close to home that resonate with her professionally and that speak to her heart and mind.
- Chuck supports non-profits he's personally familiar with that rescue his favorite animals.
- Carol Ann's volunteer connections and family ties guide her decisions.
- Their mother, Janet, supports cancer patients and funds cancer research in honor of family members touched by the disease.

Decades ago, Charlie and Janet made a decision to use some of their good fortune to help others. Their spirit of generosity has grown into a family endeavor, involving the next generation in the legacy of community giving, now and forever.



**FOR THE DALEY FAMILY,
GIVING TO OTHERS IS AS
NORMAL AS BREATHING.**



The Frees Family

'BRING MORE TO THE TABLE THAN YOU TAKE' IS THE FAMILY MOTTO



The Frees family is well-known throughout Chester County for its deep roots, successful community-based businesses and longstanding civic engagement.

A little history: In 1933, David M. Frees opened the Frees Insurance agency in Phoenixville. He was followed, in 1959, by son, David Jr. Then in 1984, Robb Frees began working at the company with both his wife, Lisa, and his father. Recently Tyler Frees joined the company, making it a four-generation family business.

Tyler's brother Morgan pursued a different path, working at JP Morgan Chase

& Co in New York City.

David Jr.'s and wife Mary Jane's eldest son David M. Frees III, Esq. took the legal route, helping found Unruh, Turner, Burke & Frees, where he heads the Trust, Estate and Wealth Preservation Section and helps families who want to leave a legacy for their heirs. He's also served as Chair of the Chester County Community Foundation and on many charitable boards and capital campaigns.

In 1995 David III's wife Robin—while raising Joshua, Jamie and Alex—founded NewBorn Concepts, which served Phoenixville and all of Chester County. Robin now

works at Chester County Hospital.

Today the fourth generation has left the nest—Josh Frees works as a freelance illustrator, Jamie Frees Miller is an anthropologist and coordinator, and Alex Frees is a marketing director for CreditSuite.

David III recalls weekly tithing: "I remember eating

spaghetti suppers and lots of tuna noodle casseroles—simple meals. And every Friday, Mom and Dad would sit at the table with us, and we'd decide how much money we would put aside for charity."

Robb continues, "Service and giving one's time and money is an obligation, regardless of age or wealth. We developed the habit of giving, even when time and money were scarce. The habit endures."

Over time, as the Frees family continued to grow and thrive, the family began more formal philanthropy. In 1994 when the Chester County Community Foundation was just beginning, David Jr. became a board member.

Continuing the family's tradition of generosity, brothers David and Robb started the Frees Family Fund in 1997.

This intergenerational family legacy fund focuses its grants on "Neighbors helping neighbors." A fitting demonstration of the Frees family motto: "Bring more to the table than you take."

{ 'WE DEVELOPED THE HABIT OF GIVING, EVEN WHEN TIME AND MONEY WERE SCARCE. THE HABIT ENDURES.' }

Leonard C. Haas

SUPPORTING AREA ARTS & CULTURE: FROM BUILDING SETS TO NAMING THEATERS

To say that Leonard C. Haas is a patron of the arts is an understatement.

In truth, much of Haas's life was shaped and informed by his connection to theater. As both an actor and a philanthropist, the performing arts affect Haas on a daily basis. And through his long-running charitable work with the William Penn and Wyncote Foundations, Haas, along with members of his family, continually contributes to the region's art and culture scene.

In short, Haas is a key player—both on and off the stage.

After earning a BFA from Ithaca College and living in New York City, Haas returned to Philadelphia for the early years of its theatrical revolution. Haas remembers attending a show at the People's Light and Theatre Company (the name before it became simply People's Light) in Malvern in 1986 and being impressed by the company's "unique and immersive" productions.

Two years later, Haas began working with People's Light, building sets in hopes of earning a place on stage as an actor. Now, the theater's main stage bears Haas's name.

The close, hard-working community that was the roots of People's Light stays in Haas's mind. He recalls the early history when by day, theater employees would sell tickets at the box office or

craft costumes and sets. With any luck, the actors could catch a quick dinner before taking the stage and performing all evening. "Everybody was always doing something," Haas said.

And that strong community and work ethic are reflected in Haas's philanthropic work. As one of the Wyncote Foundation's board members, Haas strives to make grants to give back to the culture that shaped him. He describes arts and culture as his passion and cites the grants his organization funds as an "exciting jolt."

Although the Wyncote Foundation has grown—there's a formal application process now as opposed to informal meetings with the ever-social Haas—a community-focused spirit still guides its hand.

"I'll always have the same mentality where I just want people to be happy," Haas said. "I realize how lucky I am to have this opportunity. To be able to make a difference in peoples' lives is profound. I'll never forget it's a gift and I cherish it."

And so, Haas continues to do what makes him happy: charity work and acting. In April, Haas returns to People's Light in "For Peter Pan on Her 70th Birthday."

"If I don't perform every once in a while," Haas said, "I feel like a piece of me would be missing."



{ TO SAY THAT LEONARD C. HAAS IS A PATRON OF THE ARTS IS AN UNDERSTATEMENT. }



The Holleran Family

PHILANTHROPY MAKES THE FAMILY FEEL CONNECTED TO THE COMMUNITY



versity and The Villanova University School of Law.”

Additionally, Kevin served as Chair of the Board of the Chester County Hospital Foundation for nearly a decade, and Burse served as President of the Junior League of Philadelphia.

Kevin’s sister, Mary, is also a generous and caring community member. For 29 years she owned Studio 3, a custom framing shop in the heart of Downingtown. Mary’s husband, David Proctor, is the retired Director of the Ballard Spahr Research & Information Center.

Mary is a long-term board member of the Brandywine Health Foundation, where she also served as Chair of the Foundation’s garden party for 10 years, as well as a board member of the Brandywine YMCA for more than 25 years, and a founding board member of the Downingtown Main Street program.

For the past 12 years Mary’s, and now David’s, passion has been the Downingtown Library as a donor and major fundraiser. Mary and David believe in the “power of libraries and how they can transform a community for rich and poor.”

The Holleran siblings and their spouses tirelessly support charitable causes. Betty and Rich Holleran would be proud of them carrying on the family’s tradition of philanthropic good works.

“Community involvement came naturally to our parents. There was never a lecture to get involved in our community. It simply is the way our parents socialized us from childhood,” says Kevin Holleran, Esq.

His sister, Mary Holleran, continues, “Giving is something the Holleran family has always stood for. We’re immersed in the community and well-versed in charitable issues. Sometimes we give to effective nonprofits to reward them. Sometimes we give to needy charities to help them. But we always do our research. We have a giving strategy and a plan.”

Kevin is a partner with the law firm Gawthrop Greenwood, and his wife, Priscilla (“Burse”), is a newly retired Special Education teacher from the Colonial School District. Burse explains, “Giving helps us feel con-

nected to our community.”

Kevin and Burse have been involved as volunteers, board members and major donors with an array of causes, including the Chester County Community Foundation, Downingtown Library and United Way of Chester County.

Kevin is clear: “Our alma maters are very important to us, so we contribute time and resources to The Agnes Irwin School, Dickinson College, Hollins College, Temple Uni-

‘COMMUNITY INVOLVEMENT CAME NATURALLY TO OUR PARENTS. THERE WAS NEVER A LECTURE TO GET INVOLVED IN OUR COMMUNITY. IT SIMPLY IS THE WAY OUR PARENTS SOCIALIZED US FROM CHILDHOOD.’

Karen and Bob Rigg

‘GIVING MAKES US FEEL GOOD.’

Most people know Karen Rigg, CISR, and Robert Rigg, CPCU, CIC, CLU for their outgoing, friendly demeanor and successful insurance business, the Rigg Darlington Group. It only takes a little bit of conversation to discover that Karen and Bob are deeply involved in their community, as volunteers, board leaders and generous donors.

The Rigg Darlington Group of Exton was formed in 2001 with the merger of two longstanding insurance agencies, the Rigg Agency and Darlington Insurance Agency, which traces its roots back to 1917. Licensed in over 40 states, Bob serves as Chairman, Business Risk Consultant and Karen is Senior Assistant Account Manager.

Bob attributes The Rigg Darlington Group’s success to its strong core values: “We build enduring relationships through fairness and integrity, with clients and also with fellow associates. Our culture supports those relationships. Everything is done with a client focus.”

Bob enjoys serving on boards and lending his time, talent and resources to nonprofits doing good work in the community. Some of the groups he is deeply involved with include the Rotary Club of Thorndale, YMCA of



Greater Brandywine, Good Works Resource Development Committee, and the Forks of the Brandywine Presbyterian Church.

Bob also served with distinction as a Chair of the Board of the Chester County Community Foundation.

Professionally, Bob now serves as a director of First Resource Bank and previously served as a director of National Penn Banc-

shares, National Penn Bank and Elverson National Bank.

Karen and Bob make grants from the Rigg Family Foundation to charities throughout the region including Camphill Special School, Chester County Futures, Honey Brook Food Pantry, Uptown! Knauer Performing Arts Center, and YMCA of Greater Brandywine, among others.

Karen explains, “We like to help people by giving them a hand up, not a hand out. Strong family, healthy values and ongoing learning are all keys to a good life. Giving makes us feel good.”

There are many people, families and charities throughout Chester County who are better off today thanks to the generosity and thoughtfulness of Karen and Bob Rigg.

‘STRONG FAMILY, HEALTHY VALUES AND ONGOING LEARNING ARE ALL KEYS TO A GOOD LIFE.’



Sandy Riper

A SELF-PROCLAIMED HOMETOWN GIRL AND WEST CHESTER CHEERLEADER



Although not trained as an artist, Sandy Riper has made an impact on the artistic life of West Chester.

Known to many as the second-generation West Chester jeweler and owner of the distinctive 1880s three-story building on High Street—the one with the big red Cartier-style bow at Christmas—she's the owner of Sunset Hill Jewelers and Fine Arts Gallery.

And art has been a part of her business since she opened its doors.

"My first customer on opening day was Harry Dunn," Sandy says of the local artist known for creating the NBC Peacock and Mr. Magoo character, along with delightful quirky works. And it's because of him that Sunset Hill became a fine arts gallery. There

she recreated Dunn's studio after his death and now shows works by local artists on an upper floor of the shop.

Meanwhile, the shop's first floor is home to a different kind of art—what some call wearable art—new and antique jewelry. With a clear preference for vintage over brand-name jewelry, Sandy says, "Jewelry should be a story about the person who wears it, not the company who makes it."

Her views on art are similar, valuing art not as mere decoration but for the people who create it, their stories

and how it touches you. As Sandy describes the shop's layout: "The first floor is my profession; the second is my passion."

And so Sandy has worked to make that passion part of life in West Chester. Her ties with Harry Dunn inspired her to keep his memory alive through The Harry Dunn Memorial Art Scholarship awarded to a West Chester high school senior planning to study art. With the help of Dunn's late partner, the scholarship has been administered through the Chester County Community Foundation.

More recently, Sandy and husband, Joseph, stepped in to sustain the tradition of West Chester's Gallery Walk by becoming named sponsors for this semi-annual event. In May and October, over a dozen venues are abuzz with fans enjoying the exhibits. Suggested by Dunn some 30 years ago and spearheaded by Sandy, the event was styled after First Fridays in Philadelphia.

Also supporters of the performing arts, the Ripers chaired the New Year's gala for the Uptown! Knauer Center for the Performing Arts. Working with Uptown is the next step in her years of service promoting West Chester, from the committee to establish the Business Improvement District (BID) to President of the Greater West Chester Chamber of Commerce, along with support for Chester County Art Association and West Chester Friends School.

This hometown fan is devoted to supporting everything that can make living in West Chester even better.

{ WORKING TO MAKE ART A PART
OF LIFE IN WEST CHESTER }

Noel and Bob Stanek

WORKING TOGETHER TO HELP NONPROFITS INCREASE THEIR EFFECTIVENESS & IMPACT



Noel and Bob Stanek are devoted to improving the health and well-being of others, focusing on matters of health, human services and alleviating poverty. This calling has been interwoven with their professional careers and community involvement.

Both Staneks began their careers at Good Samaritan Hospital in Pottsville—Noel as a registered nurse and

Bob as a pharmacist—and advanced in the healthcare field. Noel transitioned from direct patient care to public relations, marketing and development, establishing the hospital's first development program.

Meanwhile Bob took a parallel track, beginning as Director of the hospital's Pharmacy Services and ultimately becoming Executive Vice President and CEO, as

well as serving as the hospital's Development Corporation President, overseeing venture-based activities.

After time in Virginia at DePaul Medical Center, Bob became CEO of Buffalo Mercy Health System and their work together ended. Noel founded Kane Stanek Associates, a consulting firm focused on major gift programs and relationship-based development.

The couple began their life in Chester County in 1997, when Bob joined Catholic Health East, one of the country's largest Catholic healthcare systems, where he later served as President and CEO.

In 2010, Bob retired from Catholic Health East and became Chairman of the Catholic Health Association for the United States.

Noel and Bob co-chaired the national Haiti Rebirth and Renewal Campaign, raising \$10 million to rebuild a hospital in Port-

au-Prince, Haiti. Bob then moved into governance and advisory roles in publicly traded corporations, along with work in venture capital and private equity, which he continues today.

Despite moving to Long Beach Island, NJ and then to Windermere, Florida, Noel and Bob realized retirement simply wasn't for them.

Returning to Chester County in 2018, they created Stanek Associates LLC, working together to help nonprofits realign, focus and increase their mission effectiveness and community impact.

To increase their own impact on the welfare of our communities, the couple also created the Noel and Robert Stanek Foundation at the Chester County Community Foundation.

With their combined experience, keen understanding and deep compassion, Noel and Bob Stanek are an unstoppable duo.

{ DEVOTED TO IMPROVING
THE HEALTH AND
WELL-BEING OF OTHERS }



In honor of Brian Zwaan

PROPELLING YOUNG MINDS



Chester County resident Brian C. Zwaan was dedicated to his family, his career and his community.

After the loss of his father when Brian was a child, his family fell on hard times. Brian later realized community educational programs helped him succeed despite the odds against him. Inspired by the power of education, Brian wanted others to have that same opportunity.

Brian was passionate about helping local educa-

tion programs—as a board member and champion donor. Villa Maria Academy, Malvern Preparatory School, St. Norbert School, Archbishop John Carroll High School and Cardinal John Foley School all benefited from his energy.

In 2014, Brian was among four people honored by the Philadelphia Archdiocese for “achievements and commitment to living a Catholic life best embody[ing] the spirit of Catholic education.”

A prominent banker, Brian served at Commonwealth, Firsttrust and Citizens Banks before co-founding Penn Liberty Bank in 2004 and serving as President until 2016. When WSFS Bank acquired Penn Liberty, Brian served as VP and Director of Commercial Banking.

In addition to being a well-respected banker and philanthropic trailblazer in the educational community, Brian was a loving husband to his wife Diane and devoted father to their four children, Elizabeth, Matthew, Sarah and Margaret. One of Brian and Diane’s goals as parents was to show their children the importance of community commitment.

Brian’s daughter, Elizabeth Zwaan Milne, Esq., notes that her father didn’t miss a week of Mass, even bicycling every Sunday to St. Joseph Roman Catholic Church when the family vacationed in Sea Isle City. Recalling her father’s oversized personality and signature belly laugh, she says, “He was constantly smiling, lighting up the room. He was a major practical joker.

Yet, when he talked to you, he listened fully,” she said. “He made you feel very important.”

Brian suddenly and tragically passed away in 2017, in a swimming accident in the waters off Sea Isle City.

Amidst their grieving, the family focused on sustaining Brian’s legacy and created the Brian C. Zwaan Legacy Fund at the Chester County Community Foundation to continue his life-long commitment to education.

Given Brian’s love of golf, the Brian C. Zwaan Legacy Fund Golf Classic was a fitting fundraising event. In its first year, the Fund raised \$125,000 for the endowment and granted \$30,000 to five regional nonprofits that support education: Chester County Futures, Frankie’s World Foundation, Hope Partnership for Education, Independence Mission Schools, and Let’s Get Ready.

Diane’s message and mission are clear, “Propelling young minds forward was Brian’s passion. We are committed to honoring his legacy of educational opportunity for all.”

ONE OF BRIAN AND DIANE’S GOALS AS PARENTS WAS TO SHOW THEIR CHILDREN THE IMPORTANCE OF COMMUNITY INVOLVEMENT

What to Wear to the Gala

Make a memorable entrance in an elegant tuxedo or a stunning gown, enhanced by glittering diamonds and sparkling accessories.



Jimmy Choo Mimi Ankle Strap Sandal, \$850. Nordstrom, King of Prussia



Silver crystal evening clutch \$150, Private Label. Occasions Boutique, Malvern



Frascona gown with one shoulder ruffle, \$2195. VanCleve Pavilion, Paoli



Black Tie Earrings in Diamond and White Gold, by Gumuchian



Emerald and Diamonds in Platinum by Suna



The Snow Queen - Platinum and Diamond Frosted Bracelet, by Suna



Michael Kors Legacy Tuxedo. Englund’s Apparel for Men, Malvern

Fundraising Fun

A FEW OF OUR FAVORITE PEOPLE, EVENTS AND CAUSES THAT DEFINE CHARITY IN OUR REGION. FROM BLACK TIE GALAS TO DESSERT-FILLED PARTIES, PLUS ROAD RALLIES, CANOEING AND MORE. MAKE SURE TO GO THIS YEAR!



33rd Annual Victory Gallop for Thorncroft Equestrian Center
Left to right: Sandra Brune, David Brune, Kelly Kenney, Rob Kenney, Karine Sommer and Sandy Sommer



Gala for Home of the Sparrow
From left to right: Robin Parish, Michelle E. Venema and Bridget Lininger



Sweet Charity, Chester County Community Foundation
The Reitmeyer Family...with cupcake volunteers



West Chester Charity Ball for Friends Association for Care and Protection of Children
Left to right: Lisa Seifert, Tim Seifert and Lauren Aurillo



Forget-Me-Not-Gala for Brandywine SPCA
Ashley Panico and Alexa Brennan



Rally for Fresh Water for Stroud Water Research Center
Dave and Brenna Marx



Tip-A-Canoe & Barbecue, Too!
for Brandywine Conservancy



All That's Purple for Domestic Violence Center of Chester County
From left to right: Jean Francois, Elizabeth Purcell, Susan Hipp-Ludwick, Richard Purcell, Arnold Borish and Linda Borish



Up on the Roof
Left to right: Mary Kevitch Moses, Kerry Grecco, Jessica Nash and Erin O'Hara



Gala for Chester County Hospital
From left: Dr. Raymond DiPietro Jr. and his wife Mrs. Jeanine DiPietro, Mr. Michael Barber, Mrs. Jackie Felicetti and her husband Mr. John Felicetti and Mr. Valter Vieira

Datebook Calendar

Although you missed the first two months of 2019 fundraisers, galas and events (they'll be back in 2020!), there are plenty more to fill your datebook as you support great local causes.

JANUARY

A Taste of Phoenixville

JANUARY 17
Serving up hope and creative cuisine for almost 20 years, with a silent auction, music, local wine, beer and spirits. Benefits Good Samaritan Shelter, dedicated to helping with homelessness. *Franklin Commons, 400 Franklin Ave., Phoenixville. 610-933-9305; TasteOfPhoenixville.com.*

Alex's Lemonade Stand Foundation's 11th Annual Lemon Ball

JANUARY 19
Yellow dresses and ties are de rigueur at this evening of dining, dancing and auctions. Hear amazing stories of heroes big and small while supporting childhood cancer research. *Philadelphia Marriott Downtown, 1201 Market St., Phila. 610-649-3034; AlexsLemonade.org.*

Kennett Chocolate Lovers Festival

JANUARY 24
Hundreds of chocolate treats vie for awards made to all levels of bakers. New feature: a Kiddie Korner with fun activities. Benefits United Way of Southern Chester Co. *Kennett High School, 100 E. South St., Kennett Square. 610-444-4357; KennettChocolate.org.*

Academy of Music 162nd Anniversary Concert & Ball

JANUARY 26
Music director Yannick Nézet-

Séguin and a special guest artist dazzled the audience in a concert at the Academy of Music, followed by a white-tie dinner and ball at the *Bellevue Hotel, 200 S. Broad St. Phila. PhilOrch.org.*

FEBRUARY

Philadelphia Auto Show

FEBRUARY 1-10
Kick the tires and take a selfie at this top auto show, with over 700 vehicles from 40 manufacturers. Feb. 1, Black Tie Tailgate, benefits the Dept. of Nursing at Children's Hospital of Phila. *PA Convention Center, 1101 Arch St., Philadelphia. 215-418-2000; PhillyAuto Show.com.*

Philadelphia Heart Ball

FEBRUARY 9
Wear your red to the gourmet

dinner, live and silent auctions and entertainment to celebrate those who give their time to the American Heart and American Stroke Associations. *Philadelphia Marriott Downtown, 1201 Market St., Phila. 215-575-5204; PhiladelphiaHeartBall.Heart.org.*

Polar Plunge

FEBRUARY 9
Make a splash! Dip a toe or take the plunge in the Brandywine Creek for this annual fundraiser. Benefits the conservation efforts of the Brandywine and Red Clay Valleys. *Brandywine Picnic Park, 690 S. Creek Rd., West Chester. 610-793-1090; BrandywineRedClay.org.*

Trail Creek Outfitters 12th Annual Wild & Scenic Film Festival

FEBRUARY 21-22

Calling all nature lovers. Two nights of inspiring environmental films highlighting outdoor adventure, environmental concerns and beautiful cinematography. Benefits Stroud Water Research Center and The Land Conservancy for Southern Chester County. *Chester County Historical Society, 225 N. High St., West Chester. TrailCreekOutfitters.com.*

2019 Lights of Life Gala

FEBRUARY 23
The Delaware Breast Cancer Coalition hosted this year's gala "Havana Nights" to honor the lives of breast cancer survivors. Purchase a tribute of celebration or a memorial to their legacy. *Dover Downs Hotel & Casino, 1131 N. DuPont Hwy., Dover, DE. DBCC.EJoinMe.org/Lights19.*



The Philadelphia Antiques & Art Show, April

Jump! For Willowdale Steeplechase

FEBRUARY 23
Jump back to the '80s and party the night away with DJ Frosty, a photo booth and silent auction at this pre-race event. Benefits Stroud Water Research Center, Penn. Vet's New Bolton Center and Quest Therapeutic Services. *Yellow House, 101 E. Street Rd., Kennett Square. 610-444-1582; WillowdaleSteeplechase.org.*

MARCH

Philadelphia Flower Show Preview Party Gala

MARCH 1
Beat the crowds to a breath of spring and support the greening initiatives of the PA Horticultural Society. Get an advance look at one of the country's best flower shows before it opens to the public. *PA Convention Center, 1101 Arch St., Phila. 215-988-8800; TheFlowerShow.com.*

6th Cheers for CHOP

MARCH 2
Enjoy an evening of music, cocktails, dancing and an incredible silent auction. Benefits the Division of Orthopaedics at Children's Hospital of Philadelphia. *The Fillmore*

Philadelphia, 29 E. Allen St., Philadelphia. CheersFor.Chop.edu.

Chester County Futures "Strikes for Futures"

MARCH 3
Get the ball rolling for a day with friends, food, raffles, prizes and bowling! Benefits Chester County Futures, providing academic, mentoring and scholarship support for disadvantaged area youth. *Palace Bowling and Entertainment, 977 E. Lancaster Ave., Downingtown. 610-458-9926; CCFutures.org.*

1st Annual Charter Day Cocktail Party Fundraiser for the William Brinton 1704 House

MARCH 3
Learn a little local history from living historian Doug Thomas (portraying William Penn) as you enjoy heavy hors d'oeuvres and drinks. Support one of the oldest historic houses in America. *Dilworthtown Inn, 1390 Old Wilmington Pk., West Chester. 610-399-0913; BrintonFamily.org.*

The Exchange Club Family Center's 24th Comedy & Magic Spectacular

MARCH 9
It's a night of mystery, illusion

and family comedy and fun at this annual fundraiser for the Exchange Club Family Center for the Prevention of Child Abuse. *Emilie K. Asplundh Concert Hall, Philips Memorial Bldg., West Chester Univ., 700 S. High St., West Chester. 610-429-0634; FamilyService.us/magic.*

CCCBI Foundation Masquerade Gala

MARCH 9
Let the ball begin! Help support the development of future leaders in Chester County at this fundraiser for the Chamber Foundation. Extraordinary auction items and raffle baskets, contests and games, delicious food and drinks and a masquerade theme. *The Desmond Hotel, 1 Liberty Blvd., Malvern. 610-725-9100; CCCBI.org.*

King of Prussia Restaurant Week & KOP Shops for CHOP

MARCH 11-17
A great reason to head to KOP for a week of dining and shopping to support Children's Hospital of Philadelphia's KOP Specialty Care Center. Exclusive prix fixe menus from restaurants and special deals from retailers. *VisitKOP.com/KOPRestaurantWeek.*

37th Annual Chester County Antiques and Arts Show

MARCH 15-17
Browse and buy fine collections from 42 top antiques dealers. Benefits the collections, conservation and educational activities of Chester County Historical Society. *Church Farm School, 1001 E. Lincoln Hwy., Exton. Preview Mar. 15. 610-692-4800; ChesterCoHistorical.org.*

Women's Auxiliary to Chester County Hospital Presents the St. Patty's Day Beef - Beer - Boogie

MARCH 16
Put on your green and enjoy tasty apps, a delicious dinner buffet, beer and live entertainment, including traditional Irish dancers. Benefits The Women's Auxiliary Heart to Heart Pledge. *West Chester Golf & Country Club, 111 W. Ashbridge St., West Chester. 610-610-431-5054; ChesterCountyHospital.org.*

"All That's Purple Affair" Unmasking Domestic Violence

MARCH 23
Guest host Victoria Wyeth welcomes supporters to a cocktail reception, gourmet dinner, entertainment, plus silent and live auctions. Benefits the Domestic Violence Center of Chester County. *The Farmhouse at People's Light, 39 Conestoga Rd., Malvern. 610-431-3546; DVCCC.com.*

Chester County Community Foundation Silver Sweet Charity Event

MARCH 25
Fun, food and philanthropy—Chester County's finest dessert chefs showcase their delectable creations at this annual fundraiser. A sweet time. *Whitford Country Club, 600 Whitford Hills Rd., Exton. 610-696-8211; ChesCoCF.org.*



Chester County Hospital Polo Cup, June

▶ **Radnor Hunt Races
Pre-Race Event**

MARCH 28
Chapeaux, Cigars and Cock-
tails—what a great combo!
Create your own one-of-a-kind
chapeau, roll a Race Day cigar
and help choose this year's signa-
ture Radnor Race Day Cocktail.
*Radnor Hunt, 826 Providence Rd.,
Malvern. RadnorHuntRaces.org.*

**Media Theatre's 25th
Anniversary Benefit Gala**

MARCH 30
Help mark a quarter century of
bringing professional musical
theater to State Street at a special
reception and live performances
highlighting the Theatre's produc-
tions. *104 E. State St., Media.
610-891-0100; MediaTheatre.org.*

▶ **The Red Ball**

MARCH 30
Another chance to wear your red
at this premier event featuring 30
restaurants serving appetizers and
desserts, live music and dancing,
games, a sports-themed silent auc-
tion and more. Benefits the Red
Cross House, a center for families
who suffer a disaster. *Lincoln Finan-
cial Field, One Lincoln Financial
Field Way, Phila. TheRedBall.org.*

Brandywine in Black

MARCH 30
Guests dress in black (not white
this time!), bring a picnic dinner,
wine, centerpiece, candles and
ambiance. Awards for the best
table. Benefits Neighbors For Cre-
billy Farm, protecting the quality
of life in southern Chester County.
Location announced March 28 on
*Facebook. Facebook.com/Brandy-
wineinBlack.*

**The Hickman's Art of
Caring: Passport to Art**

MARCH 30
See artists in action as six artists
create pieces live, at a gala-like
event, at Oakbourne Mansion.
These, along with other works,
will be auctioned. Benefits The



Brandywine Hills Point to Point, April

APRIL

▶ **Safe Harbor's
Spring Celebration**

APRIL 6
Enjoy cocktails, hors-d'oeuvres,
dinner and auctions. Benefits Safe
Harbor of Chester County, pro-
viding shelter and support to men
and women experiencing home-
lessness in the county. *Chester
Valley Golf Club, 430 Swedesford
Rd., Malvern.
SafeHarborOfGWC.org.*

▶ **Thorncroft's 34th Annual
Victory Gallop**

APRIL 6
Gallop to Thorncroft's 50th anni-
versary celebration, a black-tie
dinner, dance and silent auction.
Benefits Thorncroft Equestrian
Center, providing life-changing
services to those with and without
disabilities, through therapeutic
horseback riding. *The Bellevue,
200 S. Broad St., Phila. 610-644-
1963; Thorncroft.org.*

**Baker Industries' 38th
Annual Spring Gala**

APRIL 6
A dinner and auction celebrate
the accomplishments of Baker
Industries, a nonprofit work
program for adults who are on
parole, in recovery, homeless or
have a disability. This year, Baker
Industries recognizes Bryn Mawr
Trust Company and its President &
CEO, Frank Leto. *Merion Cricket
Club, Haverford. 610-296-9795;
BakerIndustries.org.*

▶ **77th Brandywine Hills
Point-to-Point**

APRIL 7
A family tradition celebrating the
first race of the season! See pony
races, lots of activities for kids
and great raffle prizes. Dogs on
leashes welcome at this family-
friendly event. *Myrick Conservation
Center, 1760 Unionville-Wawaset
Rd., West Chester. 610-793-1090;
BrandywineRedClay.org.*

**Wine Women & Shoes:
Sip, Savor and Shop**

APRIL 7
Grab your girlfriends, slip on
your newest shoes and enjoy

this benefit for the Alzheimer's
Association Delaware Valley
Chapter. Check out the Mar-
ketplace, live and silent auc-
tions, "Best in Shoe" and "Best
Dressed" contests and luxury
raffles. *The Baldwin School, 701
Montgomery Ave., Bryn Mawr.
551-208-0348; WineWomenAnd-
Shoes.com/Event/Philadelphia.*

▶ **Coaches vs. Cancer
BasketBall**

APRIL 13
Yo, sports fans! Hosted by
Philadelphia's NCAA Division I
Men's Basketball Coaches and
their wives, this black-tie evening
features dinner, auctions and
dancing. *Park Hyatt at the Bel-
levue, 200 S. Broad St., Phila.
PhiladelphiaBasketBallGala.org.*

**Celebrity Chef's
Brunch 2019**

APRIL 14
Find out what 25 award-winning
chefs are cooking up. Plus brunch
cocktails, live entertainment and
an auction. Join this year's Hon-
orary Chair, James Beard-award
winning Chef Alex Seidel. Benefits
Meals on Wheels in Delaware.

Canine Partners for Life
"Unleashed and Uncorked," May



*DuPont Country Club, 1001 Rock-
land Rd., Wilmington. 302-656-
3257; MealsOnWheelsDE.org.*

▶ **57th Philadelphia
Antiques & Art Show**

APRIL 25–28
Marking over half a century of
showcasing the country's preemi-
nent dealers of museum-quality
antiques and fine art from the
17th century to the present, this
is a can't miss event. Benefits
Penn Medicine and Philadelphia
Museum of Art. *The Navy Yard,
11th St. & Kittyhawk Ave., Phila.
Gala Preview, Thurs. 610-902-
2109; PhiladelphiaAntiques-
AndArtShow.com.*

**46th Annual Yellow
Springs Art Show**

APRIL 26–MAY 12
This well-respected, juried exhibit
features works by artists from the
Delaware Valley and beyond
and benefits the arts, education,
historic preservation and environ-
mental protection of the historic
village of Yellow Springs. *1685
Art School Rd., Chester Springs
Opening Gala, Apr. 26. 610-827-
7414; YellowSprings.org.*

**American Helicopter
Museum's 13th Annual
Fundraising Gala**

APRIL 27
Dress as your favorite Renaissance
hero for "A Night in Tuscany
Celebrating Leonardo da Vinci."
Enjoy cocktails, dinner, entertain-
ment and dancing. Renaissance
costumes encouraged. *1220
American Blvd., West Chester.
610-436-9600;
AmericanHelicopter.Museum.*

**Unite For HER—Bloom
Spring Fashion Show**

APRIL 28
A spring celebration of life,
fashion and community, featuring
Unite for HER Wellness Day
patients and their daughters as
models. Benefits those diagnosed
with breast cancer. *Merion Golf
Club, 450 Ardmore Ave., Ard-
more. UniteForHer.org/Bloom.*

MAY

**"Taste of Spring"
Fashion Show**

MAY 2
Conestoga Branch of the Paoli
Auxiliary members take to the

runway for this annual fashion
show. Enjoy lunch, raffles and
a silent auction. Benefits Paoli
Hospital. *The Desmond Hotel, 1
Liberty Blvd., Malvern. 484-565-
1380; PaoliAuxiliary.org.*

**Light a Spark: People's
Light Annual Bash & Bid**

MAY 3
Support the arts at this annual fun-
draiser benefiting Arts Discovery,
People's Light's award-winning
programs for young people. *The
Farmhouse at People's Light, 39
Conestoga Rd., Malvern. 610-647-
1900; PeoplesLight.org.*

**Chester County Hospital
Gala—Jazz Night**

MAY 4
Let the music transport you to
The Big Easy. Enjoy A Tasting
of Chester County Treasures at
the pre-party. Benefits Neonatal
Intensive Care Unit, Abramson
Cancer Center at Chester
County Hospital, Emergency
Department. *Longwood Gar-
dens, 1001 Longwood Rd., Ken-
nett Square. Pre-party at Galer
Estate Vineyard.
ChesterCountyHospital.org.*

**Canine Partners for Life:
Unleashed & Uncorked**

MAY 4
Raise a glass to CPL's largest
FUNdraising event of the year,
celebrating their 30th anniver-
sary with a theme of "Puppies &
Pearls!" Feel free to wear your
own pearls. Benefits their com-
panion and service dog program.
*DuPont Country Club, 1001 Rock-
land Rd., Wilmington. K94Life.org.*

▶ **41st Annual Winterthur
Point-to-Point**

MAY 5
A signature Brandywine Valley
event complete with an antique
carriage parade and antique car
exhibit! Enjoy a spectacular day
of elite horse racing on the lush
grounds of the Winterthur Estate.
Enjoy festive tailgating, hospitality
tents and shopping galore. Ben-
efits Winterthur's programs. *5105
Kennett Pk., Wilmington. 800-
448-3883. Winterthur.org.*

▶ **Blue Cross Broad St. Run**

MAY 5
Join the country's largest 10-mile
road race for a good cause. Run
the point-to-point course, from
Central High School Athletic Field,
Broad St. and Somerville Ave.,
Phila. and finishing inside the
Navy Yard. Benefits the American
Cancer Society. *215-683-3594;
BroadStreetRun.com.*

▶ **Willowdale in White**

MAY 10
Kick off the Willowdale race
weekend in style! Wear white,
bring dinner and drinks, table
settings and decorations, then
dance under the stars. The secret
location is emailed that morning.
Benefits Stroud Water Research
Center, Penn. School of Vet-
erinary Medicine's New Bolton
Center, Quest Therapeutic Ser-
vices, Inc. *Willowdale.org.*

**Willistown Conservation
Trust Barns & BBQ**

MAY 11



Devon Horse Show & Country Fair, May
PHOTOGRAPHY BY BRENDA CARPENTER

Join an exclusive tour of several of the Willistown area's unique and beautiful barns and farms, followed by a bountiful barbecue supper. Cocktails, hors d'oeuvres, barbecue and auction follow. Benefits the Trust's conservation works. 610-353-2562; WCTrust.org.

The 2019 Surrey Gala

MAY 11
Check in for details about this year's gala fundraiser for Surrey Services for Seniors to continue their mission to assist seniors with home care and care management. *Philadelphia Country Club, 1601 Spring Mill Rd., Gladwyne.* 610-647-9774; SurreyServices.org.

27th Willowdale Steeplechase

MAY 12
Celebrate Mother's Day at the races! Tailgate or purchase lunch on site and bring the family to join in this community tradition. Benefits Stroud Water Research Center, Quest Therapeutic Services, Inc. and Penn. School of Veterinary Medicine's New Bolton Center. 101 E. Street Rd., Kennett Square. 610-444-1582; WillowdaleSteeplechase.org.

Stroud Water Research Center's Fore Fresh Water Golf Outing

MAY 13
Hit the links and spend a fabulous day dedicated to understanding, protecting and restoring our waterways. *Bidemann Golf Course, 601 Adams Dam Rd., Wilmington.* 610-268-2153, ext. 288; StroudCenter.org.

The Salvation Army Greater Phila. "Celebrate Hope" Luncheon

MAY 15
Honor local heroes who dedicate themselves to providing hope and life-transforming opportunities to many in need. *Crystal Tea Room, Wanamaker Bldg., 100 E. Penn Sq., Philadelphia.* SAPhilly.org.

89th Radnor Hunt Races

MAY 18
Race day is about steeplechase racing, fashion and tradition. Celebrate 89 years of horseracing with everything from stylish tailgates, fancy hats and bow ties to the parade of antique carriages and thoroughbred racing. This race for open space benefits the

Brandywine Conservancy. *Radnor Hunt Grounds, 826 Providence Rd., Malvern.* 610-388-8383; Brandywine.org.

Chester County Community Foundation Spring Silver Celebration

MAY 19
Join this milestone reception celebrating the Foundation's 25th anniversary of supporting local philanthropy through legacy giving. *Abbott Barn, 315 N. Creek Rd., West Chester.* 610-696-8211; ChesCoCF.org.

Paoli Hospital Auxiliary Golf Tournament

MAY 20
Play a round of golf before heading for the cocktail reception with an open bar, silent auction, raffle and dinner. Benefits Paoli Hospital. *Waynesborough Country Club, Paoli.* 484-565-1380; PaoliAuxiliary.org/Golf.

Brandywine Health Foundation's Annual Garden Party

MAY 22
See the "Battle of the Berries

at Brandywine" as local chefs compete to create luscious desserts. Enjoy music, cocktails, hors d'oeuvres, a light supper and decadent dessert. Benefits Brandywine Health Foundation's support of a Culture of Health in Coatesville. *Springbank Farm, 301 Five Points Rd., Coatesville.* 610-380-9080; BrandywineFoundation.org.

The Devon Horse Show & Country Fair

MAY 23—JUNE 2
See Olympic-calibre riders, the best local riders, junior classes and munchkins on the Lead Line or come for the fun—like the Ladies Hat contest. There's plenty more fun at the country's oldest and largest outdoor multi-breed horse show, inside and outside the ring. Visit the Country Fair's midway attractions and boutiques. Benefits Bryn Mawr Hospital. 23 Dorset Rd., Devon. DevonHorseShow.net.

Brandywine River Museum of Art Antiques Show

MAY 24—27
For almost 50 years, Memorial Day weekend has marked this premier antiques show, featuring distinguished dealers from the Mid-Atlantic and beyond. Benefits the Museum Volunteers' Purchase Fund and Art Education and Programming. *Preview Party, Fri. 1 Hoffman's Mill Rd., Chadds Ford.* 610-388-2700; Brandywine-Museum.org/events.

Pop-Up Biergarten at Historic Sugartown

MAY 30, JUNE 27, AUGUST 22
Explore the historic buildings and period demonstrations at this preserved 19th-century crossroads town while enjoying an adult beverage from Locust Lane Craft Brewery or Chaddsford Winery and food from Nick's Roast Beef. Benefits Historic Sugartown. 260 Spring Rd., Malvern. 610-640-2667; HistoricSugartown.org.

Brandywine Health Foundation Strawberry Festival

MAY 30—JUNE 2
What began in 1973 as a one-day event on the grounds of the Coatesville City Hall has grown into a four-day extravaganza with amusements, fireworks and more. Benefits Coatesville's Public Library, Rotary Club and Youth Initiative plus the Thorndale Volunteer Fire Co. *Brandywine Hospital, 201 Reeceville Rd., Coatesville.* 610-380-9080; Brandywine-StrawberryFestival.com.

JUNE

Alex's Lemonade Stand Great Chef's Event

JUNE (DATE TBA)
Watch culinary superstars along with representatives from the best bars, wineries and craft breweries share their creations at this tasty annual fundraiser at the Navy Yard. *Urban Outfitters Headquarters, Bldg. 543, 5000 S. Broad St., Phila.* 866-333-1213; AlexsLemonade.org.

Home of the Sparrow's 25th Annual Gala

JUNE 1
Spend an evening with music, dancing, dinner, open bar and silent and live auctions. Benefits women and children in the County to prevent and end homelessness. *The Phelps School, 583 Sugartown Rd., Malvern.* 610-647-4940; HomeOfTheSparrow.org.

17th Annual Up On The Roof

JUNE 1
Sip a specialty martini as you watch the sunset from a unique vantage point. The West Chester Downtown Foundation and West Chester BID join forces for an evening under the stars with buffet dinner, music, dancing and open bar on the rooftop of the Chestnut Street Garage. Benefits the beau-

tification of West Chester. 14 E. Chestnut St. (Garage), West Chester. 610-738-3350; DowntownWestChester.com.

Greater Philadelphia Congenital Heart Walk

JUNE 2
Take a walk on the wild side! All ages are invited to walk through the Philadelphia Zoo at this fun event. Benefits the Adult Congenital Heart Association and Children's Heart Foundation. 3400 W. Girard Ave., Philadelphia. 855-CHD-WALK; Events.CongenitalHeartWalk.org.

Chester County Hospital Polo Cup

JUNE 9
For a posh outing, watch thundering horses and their riders play the Sport of Kings as you enjoy live entertainment, a silent auction, beer garden, delicious food and kids' activities. Join the traditional divot stomping at half time and the annual Hats Off to Health contest. Benefits Ob/Gyn Clinic and The Women's Auxiliary's NICU Pledge for the Chester County Hospital. *Brandywine Polo Club, 260 Polo Rd., Toughkenamon.* 610-268-8692; ChesterCounty-Hospital.org/Giving.

French Creek Iron Tour—Cycling for Open Space

JUNE 9
Have a blast as you cycle through historic Iron Furnace country and Chester County's rolling hills! Benefits French & Pickering Creeks Conservation Trust. Start and finish at Kimberton Fire Company Fairgrounds, 762 Pike Springs Rd., Phoenixville. 610-933-7734; IronTour.org.

Stroud Water Research Center's Road Rally for Fresh Water

JUNE 23
Dust off your classic convertible and cruise through the watersheds in Chester County while collecting clues about your route and the importance of fresh water. Drivers and navigators end up at a beautiful preserve for a fun Finish Line Party. Benefits Stroud Water Research Center's work on fresh water stewardship and research. 610-268-2153; StroudCenter.org.

JULY

Friday Night Lights at ChesLen Preserve

JULY 12
Star gaze and listen to live music as you sip wine and beer, toast marshmallows and socialize at one of the most beautiful settings in Chester County. This popular event sells out. Benefits Natural Lands. *ChesLen Preserve, 1199 Cannery Rd., Coatesville.* 610-353-5587; NatLands.org.

Tip-A-Canoe and Barbecue, Too!

JULY 13
Canoe down the Brandywine to a true backyard BBQ, then relax for an evening under the stars with live music and ice cream. Benefits the Brandywine Conservancy. *Brandywine River Museum, Rt. 1, Chadds Ford.* 610-388-8315; Brandywine.org.

AUGUST

Brandywine in White
AUGUST 24
The Brandywine Valley's Pop-Up BYO Summer Gala, held at a secret location, revealed before the event. Guests wear white and provide their picnic dinner, wine, centerpiece, candles, etc. Benefits Neighbors for Crebilly's work to save open space. Facebook.com/BrandywineInWhite.



Tailgating at Willowdale Steeplechase, May



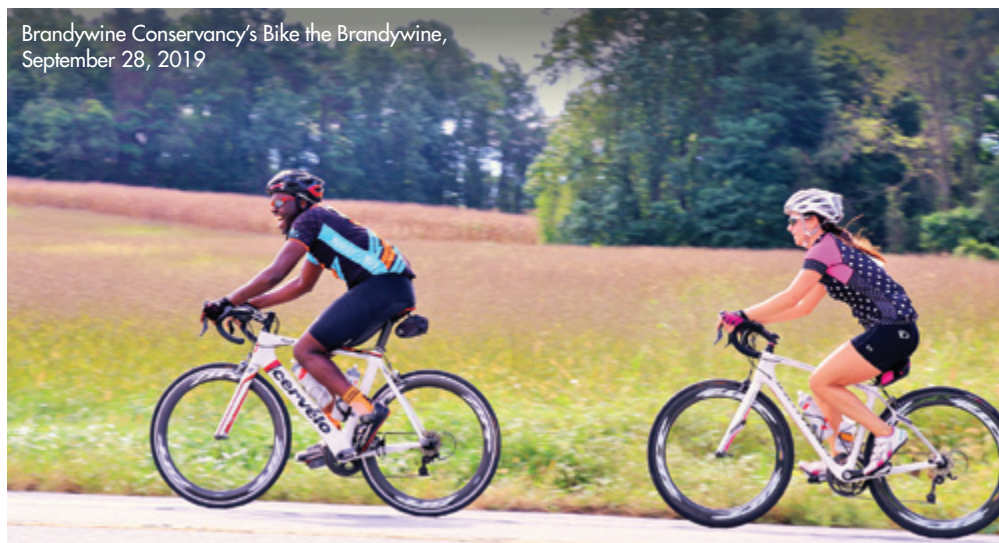
Brandywine Health Foundation's Garden Party, May



Brandywine Valley SPCA Forget-Me-Not Gala, September



Delaware Museum of Natural History Wine & Dinosaurs, September



Brandywine Conservancy's Bike the Brandywine, September 28, 2019

5K Trail Run for Thorncroft

AUGUST 29

Run, walk or wheel along the riding paths and through the fields, then visit the Thorncroft Farm and enjoy food, beverages and music. Benefits the care of horses, the true healers in all Thorncroft does. 190 Line Rd., Malvern. 610-644-1963; Thorncroft.org.

SEPTEMBER

Radnor Hunt Concours d'Elegance

SEPTEMBER 6-8

Calling all car fans! A nationally recognized motor car event, the Concours this year features the Buick, the designs of Bill Mitchell, special interest Porsches and road cars with racing names. Benefits Thorncroft Equestrian Center, specializing in therapeutic horseback riding. Held at the Radnor Hunt grounds. 826 Providence Rd., Malvern. RadnorConcours.org.

40th Annual Chester County Restaurant Festival

SEPTEMBER 15

Sample food from over 65 restaurants, visit vendors and crafters, and enjoy live music and a beer and wine garden in this street fair in downtown West Chester. Benefits the West Chester Department of Parks & Recreation. Gay and Market Sts., West Chester. Rain date, Sept. 22. West-Chester.com.

5th Annual Shugart's Sunday BBQ & Blues

SEPTEMBER 15

Enjoy tasty barbeque, sweet corn, homemade desserts, local brews, spirits and other cold beverages at the Historic Sugartown grounds. Listen to the blues as you enjoy family fun. Benefits Historic Sugartown, 690 Sugartown Rd., Malvern. 610-640-2667; HistoricSugartown.org.

Brandywine Valley SPCA's Forget-Me-Not Gala

SEPTEMBER 28

Perfect for pet lovers. Enjoy entertainment, delectable dishes, live music, silent and live auctions and, of course, adorable adoptable pets! Mendenhall Inn, 323 Kennett Pk., Mendenhall. BVSPCA.org/Gala.

Wine & Dinosaurs Around the World

SEPTEMBER 29

Sip premium wines and specialty beers throughout the Museum's exhibits as you enjoy delicious hors d'oeuvres, live music and a fantastic silent auction at this fundraiser for Delaware Museum of Natural History, 4840 Kennett Pk., Wilmington. 302-658-9111; DelMNH.org.

OCTOBER

Delaware Auto Show

OCTOBER (DATE TBA)

See the latest 2019 models, a Kids Corner and more. Benefits DE Breast Cancer Coalition. Chase Center on the Riverfront, 815 Justison St., Wilmington. DelawareAutoShow.com.

Rotary Club of West Chester—16th Annual Chili Cookoff

OCTOBER (DATE TBA)

Downtown West Chester gets spicy! Over 70 chili-cooking teams compete for prizes in several categories. Sample as many as you can and vote for your favorite. Benefits local nonprofits. Gay St., West Chester. 610-636-6740; WestChesterChiliCookoff.com.

Main Line Animal Rescue Gran Fondo Cycling Event

OCTOBER 5

Join 500+ riders to bike the beautiful country roads, enjoy an awards ceremony, great food



Unite For Her 5K in West Chester, September 21, 2019

and beer, a live band, raffles, games and a meet-and-greet with adoptable dogs. Start and finish at Pickering Meade Farm, the 60-acre home of Main Line Animal Rescue, 1149 Pike Springs Rd., Phoenixville. 610-933-0606; MLARGranFondo.org.

79th Annual Chester County Day House Tour

OCTOBER 5

Always the first Saturday in October, it's known to fans as "The Day." Celebrate the architecture of Chester County on this long-running house tour, taking you inside stunning homes. Benefits Chester County Hospital's Neonatal Intensive Care Unit Expansion Project. ChesterCountyDay.com.

People's Light Golf Classic

OCTOBER 7

"Swing for a Cause" and enjoy friendly competition with those who share a passion for the arts ... and golf. Benefits theater education programs at People's Light. White Manor Country Club, 831 Providence Rd., Malvern. 610-647-1900; PeoplesLight.org.

Thorncroft Equestrian Center's 9th Annual "Lobstah Bake"

OCTOBER 13

A bit of New England in Chester County. Plenty of lobster, chicken, cases of wine and kegs of beer as well as lots of dancing to live music and kids entertainment—a great family fundraiser. Rain or shine in the Jimmy Moran North Arena, 190 Line Rd., Malvern. 610-644-1963; Thorncroft.org.

28th Annual Dilworthtown Inn Crush Cancer Wine Festival

OCTOBER 13

Calling all wine lovers! Sample more than 100 wines and craft beers as you enjoy sumptuous fare, auctions, shopping, music and a car show. Benefits The Abramson Cancer Center at Chester County Hospital and Neighborhood Health Hospice. 1390 Old Wilmington Pk., West Chester. 610-431-5329; ChesterCountyHospital.org.

15th Annual Laurel Hill Cemetery Gravediggers' Ball

OCTOBER 18

Is there a better venue for a

Gravediggers' Ball than the Mütter Museum? Costumes and masks are encouraged. Benefits Friends of Laurel Hill Cemetery, working to preserve, interpret and promote the site. The Mütter Museum (of the College of Physicians Philadelphia), 19 S. 22nd St., Philadelphia. 215-228-8200; GravediggersBall.org.

Harvest-Unite for Her Chef and Wine Tasting Event

OCTOBER 24

The region's best chefs serve up a farm-to-table tasting event featuring wines, brews and spirits, plus auctions and live music. Benefits Unite for HER, serving local women affected by breast cancer. Phoenixville Foundry, 2 N. Main St., Phoenixville. 610-322-9552; UniteForHer.org/Harvest.

42nd Annual Radnor Run

OCTOBER 27

Stretch your legs at this 5-mile timed running race, 1-mile walk/fun run and health fair. Benefits the American Lung Association. Radnor Twp. Bldg., 301 Iven Ave., Wayne. 800-LUNG-USA; Lung.org/RadnorRun.



Chester County Day House Tour, October



Brandywine River Museum of Art Antiques Show, May

NOVEMBER

56th Annual Delaware Antiques Show

NOVEMBER DATE TBA

See the finest offerings from more than 60 distinguished dealers in art, antiques and design. Benefits educational programming at Winterthur Museum, Garden & Library. *Chase Center on the Riverfront, 800 S. Madison St., Wilmington. 800-448-3883; Winterthur.org.*

Devereux 20th Advanced Hope Gala—"Secret Garden"

NOVEMBER DATE TBA

This black-tie event, raising money to support programs and services provided by Devereux, is a special evening with once-in-a-lifetime experiences and other unique items offered at live and silent auctions. *Moulin at Sherman Mills, 3502 Scotts La., Philadelphia. 800-345-1292Devereux.org.*

Home of the Sparrow's 21st Annual Fashion Show

NOVEMBER DATE TBA

This fundraiser demonstrates the power of women supporting women in the community under the theme "The Power of the Purse." The runway fashion show and dinner take place at *The Desmond Hotel, 1 Liberty Blvd., Malvern. 610-647-4940; Home of the Sparrow.org.*

Main Line Notable-Kitchen Tour & Chef Tastings

NOVEMBER DATE TBA

Peek inside some of the Main Line's unique kitchens on this self-guided tour of several private homes. Each stop offers chef tastings, florists displays and unique table settings so you can nosh as you find new kitchen design inspiration. Benefits The Philadelphia Orchestra. *NotableKitchens.com.*

French & Pickering Creek Trust's 36th Annual Auction Party

NOVEMBER 2

Help preserve the special character of northern Chester County with an evening of dinner, cocktails and friends plus a silent auction with hard-to-resist items and unique experiences. Benefits French & Pickering Creeks Conservation Trust. *Stonewall Golf Club, Bulltown Rd., Elverson. 610-933-7577; FrenchAndPickering.org.*

85th Running of the Pennsylvania Hunt Cup

NOVEMBER 3

Timber racing, food and shopping highlight a day on the rolling hills of southern Chester County at this long-standing equestrian event. Amateurs compete alongside the pros at this "open race." Benefits the Chester County Food Bank, Work to Ride, and Upland Country Day School. *North of Rt. 926 and Newark Rd., Unionville. 484-888-6619; PaHuntCup.org.*

Philadelphia Marathon & Half Marathon

NOVEMBER 22-24

Watch elite runners from around the world and maybe even your neighbors ... or join in yourself! The city turns out for this big event, now in its 26th year. One of the top 10 marathons in the country. Choose the full marathon, a half, 8k or kids run. Benefits the American Association of Cancer Research. *22nd St. & Ben Franklin Pkwy., Phila. Philadelphia-Marathon.com.*

Paoli Hospital Auxiliary Mistletoe & Magic

NOVEMBER 23

This annual event promises top notch dining and entertainment with a new, exciting theme each year. Check the website to find out more closer to the date of the event. Benefits Paoli Hospital. *The Desmond, 1 Liberty Blvd., Malvern. 484-565-1380; Paoli-Auxiliary.org.*

Phoenixville Chamber of Commerce Charity Gala

NOVEMBER 23

Dinner, dancing and silent auction with great items for this season of giving. Benefits the Phoenixville Senior Center. *Rivercrest Golf Club & Preserve, 100 Rivercrest Dr., Phoenixville. 610-933-3070; PhoenixvilleChamber.org.*

Philadelphia Museum of Art Contemporary Craft Show

NOVEMBER 7-10

The country's top contemporary crafts are for sale at this world-class juried show each year—perfect timing for holiday shopping. Benefits the Museum's permanent collections, conservation and publication projects, plus exhibitions and education programs. Preview party, Nov. 7. *PA Convention Center, 1101 Arch St., Phila. 215-684-7930; PMACraftShow.org.*

DECEMBER

West Chester Charity Ball

DECEMBER 11

A highlight of the West Chester charity season! Enjoy dinner, dancing and auction. Benefits The Friends Association for Care and Protection of Children, Outreach, Emergency Family Shelter and the Homeless Prevention Program. *West Chester Golf and Country Club, 111 W. Ashbridge St., West Chester. 610-431-3598; Friends-Assoc.org.*

Uptown! Entertainment Alliance Gala

DECEMBER 31

Ring in the New Year at this fun-filled gala to support the Uptown! Knaus Performing Arts Center at West Chester's "Party of the Year." In 2018 the theme was "Puttin' on the Glitz." Fabulous food and, of course, lots of entertainment. *226 N. High St., West Chester. 610-356-2787; UptownWestChester.org.* ♦



Radnor Hunt Concours d'Elegance, September



Exchange Club Family Center's Comedy & Magic Spectacular, March



Brandywine In White, August



Kennett Chocolate Lovers Festival, January



Radnor Hunt Pre-Race Event
"Chapeaux, Cigars and Cocktails," March



The Hickman's Art of Caring, March



A Taste of Phoenixville, January



American Helicopter Museum Gala, April



Winterthur Point-to-Point, May
PHOTOGRAPHY BY BEN FOURNIER

Check our Best Local Events feature each month in *County Lines Magazine* and on our website, CountyLinesMagazine.com, for updates to these events and many more throughout the year. To have your event in next year's datebook, contact Info@ValleyDel.com. Space is limited!



Chester County
COMMUNITY
FOUNDATION
YEARS OF PHILANTHROPY

growing philanthropy
for good. forever

CONGRATULATIONS TO OUR SUPER DOOR OPENERS

Louis N. Teti, Esq. of MacElree Harvey &
L. Peter Temple, Esq. of Larmore Scarlett
for consistently discussing legacy philanthropy with clients & colleagues.



Door Opener Award

The Community Foundation Door Opener Award spotlights professional advisors who frequently bring legacy philanthropy to the attention of their clients and colleagues. These trusted advisors are key to opening the door to legacy philanthropy.

25 *Chester County*
COMMUNITY
FOUNDATION
YEARS OF PHILANTHROPY

The Lincoln Building
28 West Market St.
West Chester, PA 19382
610-696-8211
info@chescofc.org
www.chescofc.org

Anything is possible



if you have a solid foundation.

At MacElree Harvey, Ltd., we recognize that it is a privilege to live and work in the communities we serve.

While we work every day to assist individuals and businesses with family, personal, and corporate law matters, we also work hard to give back to our community.

We are proud to support the Chester County Community Foundation, which endeavors to connect people who care with causes that matter to establish legacy philanthropy.

We congratulate Super Door Opener, Louis N. Teti and thank him for his ongoing efforts in opening doors to legacy philanthropy.



*25 years of
preventing homelessness
for women and children
in Chester County*

*Help women and children in need:
www.homeofthesparrow.org/donate*



**Sponsorship
opportunities
available!**

Pride Festival

SAT., JUNE 1, 12:00-5:00 PM

Reeves Park, Phoenixville, PA
Live Entertainment headliner **Aquaria**,
winner of RuPaul's Drag Race, Season 10.
Food, music, comedy, plus business,
non-profit and merchandise vendors.
Free and open to all; 1,000's expected!

Pride Gala

SUN., JUNE 2, 4:00-9:00 PM

Desmond Hotel, Malvern, PA
Live Entertainment headliner **Julia
Scotti**, transgender comedienne and
quarter finalist on America's Got Talent,
Season 11. Buffet dinner, silent auction,
50-50, speakers, awards, DJ, dancing.



Funds Raised Support LGBTQ+ Health, Education, and Social Programs.

▲ Come Join the Fun! ▲ Sponsor the Pride Weekend ▲ Sign Up for a Booth

Learn more: www.Lgbteachesco.org/chester-county-pride/

Email questions to: info@lgbteachesco.org



**TreeTops
Kitty Cafe**

An entry donation is required to enter the Cat Lounge

Current Hours: Mon closed
Tues - Sat 10 to 5, Sun 11 to 3
Hours will change seasonally

Join us for **FUN**,
Relaxation, Cat Therapy,
Shopping & Adoptions

Some of our Special Events:

Yoga with Cats	Date Nights
Children's Story Time	Wine Glass Painting

Non-Profit Cat Rescue & Adoption Center
305 W. State St. Kennett Square, PA 19348
610-925-2908
www.TreeTopsKittyCafe.com

**THORNCROFT
EQUESTRIAN CENTER**

50th

Celebrating 50 Years

SAVE THE DATE

34TH ANNUAL VICTORY GALLOP

APRIL 6, 2019

THE BELLEVUE HOTEL
THORNCROFT.ORG • 610.644.1963

DBCC'S GREAT STUFF Home

North Wilmington's best kept secret...

Resale furniture and home accents at surprisingly low prices, for every lifestyle.



Net profits benefit the Delaware Breast Cancer Coalition.



Talleyville Center
Concord Pike, Wilmington DE 19803
302.477.1870
Tues, Weds, Fri 10-5 pm
Thurs 10-6 pm, Sat 10-4 pm

Visit our website: www.greatstuffresale.com

Find us on Facebook: /Greatstuffresale

Follow Us On Twitter: /Greatstuffde

Follow us on Instagram: /Greatstuffde

HISTORIC SUGARTOWN

Historic Sugartown

Explore. Connect. Protect.

Experience the 19th-Century Village

Guided Tours

Book Bindery Workshops

Events & More

Your community.
Your past.

HistoricSugartown.org

Tours: May - Nov | Sat 11am - 4pm | Sun 1 - 4pm
273 Boot Rd | Malvern, PA 19355 | 610.640.2667

May 11, 2019

PHOENIXVILLE BEER & WINE FESTIVAL

AT KIMBERTON FAIRGROUNDS

TICKETS ON SALE NOW!



- The premier festival of its kind in Southeast Pennsylvania
- Now in its 3rd year
- More than 150 craft beers, wines, meads, ciders and spirits
- Live music and local artisans
- Food choices from regional restaurants and food trucks

Saturday, May 11, 2019 from 12 pm - 4 pm

Kimberton Fairgrounds
762 Pike Springs Road
Phoenixville, PA 19460

THIS IS A RAIN OR SHINE EVENT.

PhoenixvilleBeerWineFestival.com

The Cat Show is Coming to Town!

PRESENTED BY CAT'S INCREDIBLE, INC.





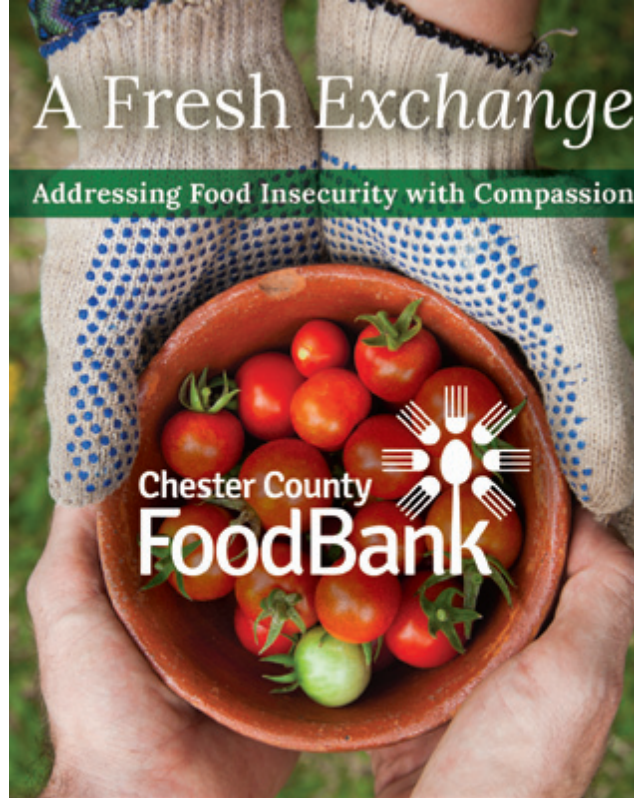
Saturday, March 23 (9-4pm) • Sunday, March 24 (9-3pm)

Top Pedigree Cats from Around the Country Compete for Best in Show!

Convenient New Location
Greater Philadelphia Expo Center, Hall E
100 Station Avenue; Oaks, PA. 19456
www.catshows.us/catsincredible

A Fresh Exchange

Addressing Food Insecurity with Compassion



Chester County FoodBank

ChesterCountyFoodBank.org/donate
610-873-6000

A DESTINATION FOR FUNDRAISING!

UNIQUE, HISTORIC VENUE • INDOOR/OUTDOOR CEREMONY AND RECEPTION AREAS
MAGNIFICENT PHOTO BACKDROPS • ON-SITE EVENT CONSULTANT • PICTURESQUE LANDSCAPE



W

WEST LAUREL HILL

610.668.9900

WWW.WESTLAURELHILL.COM

225 BELMONT AVENUE | BALA CYNWYD, PA 19004

FIND MORE FUNDRAISERS

See our inaugural
2019 Datebook Calendar
in this issue! For even
more events, visit our
website and use the
special “Fundraisers”
category on the left.

COUNTYLINESMAGAZINE.COM/EVENTS

COUNTY LINES
MAGAZINE



2019 REGIONAL ANTIQUES SHOWS

Our calendar of annual antiques shows, where you'll find
everything from top-of-the-line heirlooms to popular collectibles.

MARCH 15-17

Chester County Antiques & Art Show
Church Farm School

1001 E. Lincoln Hwy., Exton

610-692-4800; ChesterCoHistorical.org

The show features fine collections from 42 antiques dealers. Benefits the collections, conservation and educational activities of Chester County Historical Society. Church Farm School, 1001 E. Lincoln Hwy., Exton. Fri., Preview Party, early admission at 5 (\$200); 6 p.m. admission (\$150). Show hours: Sat., 10 to 6; Sun., 11 to 5. \$15. 610-692-4800; ChesterCoHistorical.org.



Elverson Antiques Show

APRIL 25-28

Philadelphia Antiques & Art Show

The Navy Yard, Marine Parade Grounds

11th St. & Kittyhawk Ave.

Philadelphia, 610-902-2109

PhiladelphiaAntiquesAndArtShow.com

Vast selections of decorative and fine art from the 17th century to the present. Benefits Penn Medicine and Philadelphia Museum of Art's Division of Education and Public Programs. Gala Preview, Thurs., 6 to 9 p.m., \$150-\$600. Show: Fri.-Sat., 11 a.m. to 8 p.m.; Sun., 11 to 5. \$15-\$25. 610-902-2109; Philadelphia-AntiquesAndArtShow.com.



Chester County Antiques & Art Show

MARCH 16-17

65th Annual Baltimore Antique Arms Show

MD State Fairgrounds Cow Palace

2200 York Rd. (Rt. 45), Timonium, MD

301-865-6804; BaltimoreShow.com

MARCH 16-17

Antiques at Kimberton Show

2276 Kimberton Rd., Kimberton

AntiquesAtKimberton.com

MARCH 23-24

Elverson Spring Antiques Show

Twin Valley High School

4897 N. Twin Valley Rd., Elverson

610-721-2874; ElversonAntiqueShow.com

In its 50th year, this is one of the region's premier antique shows with over 40 dealers offering folk art, furniture, stoneware, art and Americana. Sat., 11 a.m. to 5 p.m.; Sun., 11 to 4. \$7; \$6 with card or ad.

APRIL 25-27

Renningers Antiques Extravaganza

740 Noble St., South of Kutztown

610-683-6848; Renningers.net

MAY, DATE TBA

Greater York Antique Show

York Expo Center, Utz Arena

334 Carlisle Ave., York

856-686-9000; MitchellDisplays.com

MAY 3-4

Eastern Nat'l Antiques Show & Sale

Carlisle Expo Center, 100 K St., Carlisle

410-538-5558; EasternNationalAntiques.com

MAY 24-27

Brandywine River Museum of Art

45th Annual Antiques Show

Rt. 1 at the Museum, Chadds Ford

610-388-8318 (preview)

610-388-2700; BrandywineMuseum.org

Fine antiques include furniture, rugs, porcelain, needlework and more from distinguished



Brandywine River Museum of Art Antiques Show

JUNE 27-29

Renningers Antiques Extravaganza

See April 25-27 listing.

AUGUST 25

Historic New Castle, DE Show

On the waterfront, Battery Park

302-322-9801; NewCastleCity.Delaware.gov

SEPTEMBER 20-22

The Original Semi-Annual 173rd

York Antiques Show and Sale

York Fairgrounds and Convention Center

Memorial Hall East

334 Carlisle Ave., York, 302-875-5326

TheOriginalYorkAntiquesShow.com

SEPTEMBER 26-28

Renningers Antiques Extravaganza

See April 25-27 listing.

OCTOBER 26-27

Elverson Fall Antiques Show

Twin Valley High School

4897 N. Twin Valley Rd., Elverson

610-721-2874; ElversonAntiqueShow.com

NOVEMBER, DATE TBA

Bucks County Antiques Show

Eagle Fire Hall, Rt. 202 & Sugan Rd.

New Hope; BCADAPA.org

NOVEMBER, DATE TBA

Eastern Nat'l Antiques Show & Sale

See May 3-4 listing.

NOVEMBER, DATE TBA

Antiques at Kimberton Show

See March 16-17 listing.

NOVEMBER 9-11

Delaware Antiques Show

The Chase Center on the Riverfront

Wilmington, DE, 302-888-4600

800-448-3883; Winterthur.org/DAS ♦

check out CountyLinesMagazine.com for updates

OPEN TO THE PUBLIC

**Renaissance Academy's
7th Annual
Golf Outing**

Friday, June 21st, 2019
8am Breakfast
10am Shotgun Start
Landis Creek Golf Club, Limerick, PA

****Corporate Sponsorships Available****

**To Register or
Learn More, visit**
WWW.RAK12.ORG
under "Support Us" tab



Renaissance Academy is a fully-accredited, non-profit, public charter school currently educating over 1060 students from 22 surrounding school districts.
 — ** Portions of Sponsorships are Tax Deductible ** —
 Questions: Call 610-983-4080, Ext. 207



**SUNSET HILL
JEWELERS**

EST.  1983

Chester County's Most Trusted Jeweler
 23 N. High St., West Chester, PA
610.692.0374
 sunsethilljewelers.com

*Proud supporting sponsor of West Chester
Gallery Walk, Uptown! Knauer Performing
Arts Center, Chester County Food Bank,
the Harry Dunn Art Memorial Scholarship
and many more!*



**KNAUER
PERFORMING
ARTS CENTER**



15% off
 Use Coupon Code
CLSPR19
 on your choice of
 Uptown! tickets
 exp. 5/31/19
 not available for RTC
 performances

Best Seats in Town for LIVE Entertainment

UptownWestChester.org

**THE RESIDENT
THEATRE COMPANY** 

**DIRTY ROTTEN
SCOUNDRELS**

MARCH 29 - APRIL 21, 2019



WWW.RTCWC.ORG | **\$25-\$56**
 PERFORMANCES @ THE UPTOWN! | SUBSCRIPTIONS & SENIOR/GROUP
 KNAUER PERFORMING ARTS CENTER | DISCOUNTS AVAILABLE
NY THEATRE IN WEST CHESTER!

Books That Inspire

Mike Wall, Wellington Square Bookshop

LIFT YOUR SPIRITS WITH A GOOD BOOK.

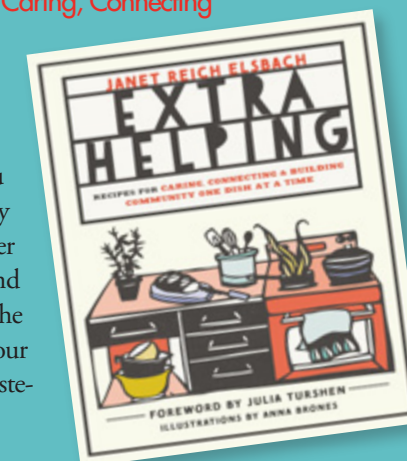
CHARITY HAS A PROTEAN NATURE. IT'S A WORD too often wrongly associated with the idea of a handout and not often enough with the ideals of goodwill and basic decency.

These six books offer definitions of charity that encompass the gifts of food and knowledge, the perspectives of a doctor and a child, and the practical ways we might go about making our part of the world a better place for each of us.

Extra Helping: Recipes for Caring, Connecting and Building Community One Dish at a Time

by Janet Reich Elsbach and Anna Brones

How often have you prepared a meal for family members or those of a larger community? Making and serving food to others is the oldest communal act of our species—the offering of suste-

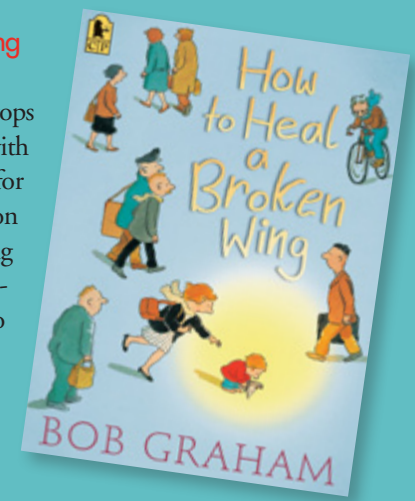


nance becomes an offering of love. Most of the foods in this book are a kind of comfort fare: kebabs, noodles, chicken, rice, zucchini, muffins, soups, twice-baked potatoes. The authors then provide combinations of ingredients and complementary dishes so the host can create a gustatory harmony for guests. One reviewer described this book as “a master class in the art of nurture.” This is a cookbook for those who wish to give joy and solace through the meals they make for others.

How to Heal a Broken Wing

by Bob Graham

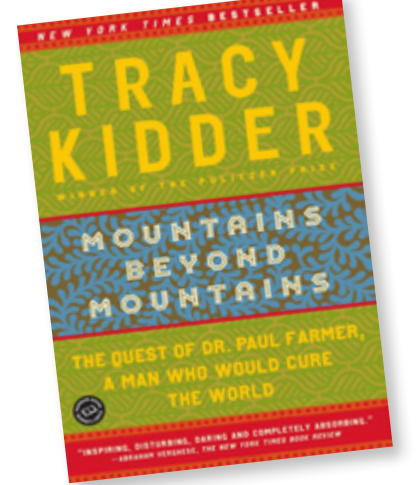
No one else in the city stops for or even sees the pigeon with the broken wing except for Will, a child, who insists on taking it home and caring for it. He enlists his parents' help. He seems to convince them with his intensity. The bird heals. Will releases it. It flies



away. That's it. The text is a bare narration. None of the characters speak. In the midst of crowds hurrying past, Will alone acts to allay the suffering of a creature that would have died without his insistence on compassion. Graham never uses the words charity, kindness or care, but he shows that a child may lead the way to the core of all three of those words.

**Mountains Beyond Mountains:
The Quest of Dr. Paul Farmer,
A Man Who Would Cure the World**
by Tracy Kidder

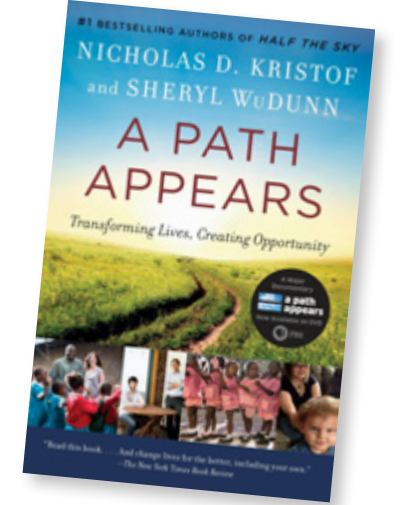
Since 1987, Paul Farmer, a Harvard educated doctor, has worked in the poorest country in the Western Hemisphere. He provides medical care, runs a series of clinics and advocates for the poor with whatever leaders are in power. Farmer believes “the world’s problems [cannot] be fixed without any cost to [ourselves]. ... There’s a lot to be said for sacrifice, remorse, even pity. It’s what separates us from roaches.” His charity is of this specialized kind: his life is the charitable endeavor and he lives within his acts of charity. As such, he has acquired moral authority and unparalleled credibility in terms of analyzing and offering solutions to the calamities of poverty and disease.



**A Path Appears: Transforming Lives,
Creating Opportunity**
by Nicholas Kristof and Sheryl WuDunn

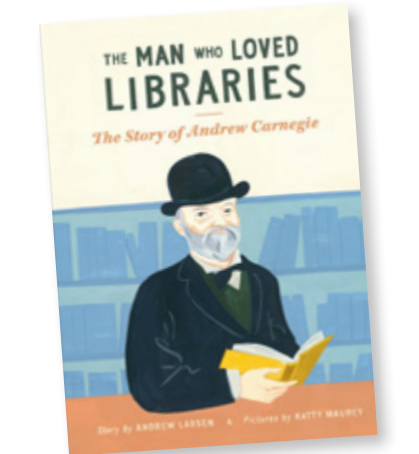
Husband-and-wife team Kristoff and WuDunn have created a philosophical case that global problems are not hope-

less but can be solved by an application of creativity, concerted effort and funding. They show how to create the paths that lead to these solutions. One example, a \$40 operation can alleviate the blindness of millions of Africans as caused by trachoma. But before charitable giving can make a difference, one must be able to make a conduit through which it can flow. Kristoff and WuDunn offer this formula: vision coupled with a focused desire to help creates practical results. They have written a book that fosters hope.



**The Man Who Loved Libraries:
The Story of Andrew Carnegie**
by Andrew Larsen and Katty Maurey

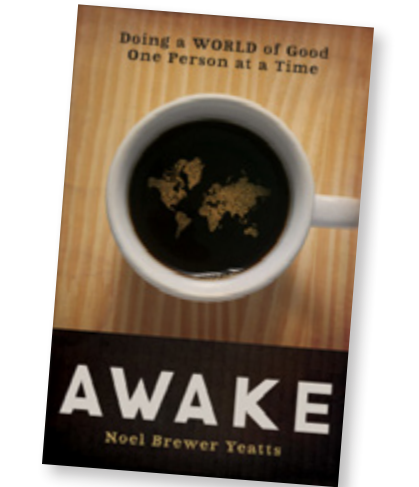
Sometimes charity reads like expiation. Andrew Carnegie, a brilliant industrialist and businessman, was also partially responsible for the Johnstown Flood and a lockout/strike at his Homestead Steel Works that led to deaths, many injuries



and permanent bitterness in the community. He spent his final years giving his money away—in the process building over 2500 libraries. He said, “A library outranks [anything] a community can do to benefit its people. It is a never-failing spring in the desert.” The illustrations in this book, done in warm colors, combine a love of books with the special intimacy of libraries—a space apart from the push and shove of life outside their sanctuary.

**Awake: Doing a World of Good
One Person at a Time**

by Noel Brewer Yeatts and Aimee Lilly
Who has not been staggered by a sense of helplessness in our daily encounters with human suffering? How are we to begin to act to ease all that pain? Yeatts and Lilly propose these suggestions: pay attention to suffering, and then, person by person, case by case, decide you will humbly act to help make one life better. They say we must learn to see the suffering, then move towards it and create “a ripple effect that can change the world.” Charity begins with one, not with many. ♦



Find the Wellington Square Bookshop on Facebook, Instagram and Twitter. The Bookshop hosts a café, weekly story times on Tuesdays for children (ages 1–5), monthly fiction and nonfiction book clubs, author events with book signings and an Avid Reader podcast available on Podomatic. 549 Wellington Square, Eagleview Town Center, Exton. WellingtonSquareBooks.com.



Hiring Drivers and Student Aides

- Starting wages up to \$19.50
- Flexible hours Monday–Friday
- Fully licensed school bus drivers signing bonus of \$1,800
- Bring your child to work

To apply please visit our website and click on employment opportunities or call or visit our office.

308 National Road Exton, Pa 19341

www.onthegokids.com
610-873-7787



EOE (Equal Opportunity Employer)

THE HAVERFORD SCHOOL

Preparing Boys for Life



Visit The Haverford School on a Wednesday or Thursday morning for a casual inside glimpse of our classrooms and facilities. Private tours are also available throughout the spring.

**LOWER SCHOOL
LOOK & LEARN**

(Pre-k-Grade 5)

April 11 | April 24 | May 8

**MIDDLE SCHOOL
LOOK & LEARN**

(Grades 6-8)

April 25 | May 2

haverford.org/events



Expand the party space and host your fundraiser in your yard.

Getting Your Home Party Ready

Mercedes Thomas

MAKING YOUR HOME THE CENTERPIECE FOR A CHARITABLE EVENT

WHAT DOROTHY REALIZES IN *THE WIZARD OF OZ* is true—there’s no place like home. And this lesson may also be true for holding a charity fundraiser. And so in an area rich with both philanthropy and beautiful homes, it makes sense that the two can combine for a good purpose.

For those with enough space and time, hosting a party for a good cause at their home has many advantages—it encourages more conversation between guests and organization members and provides a special ambiance given the warmth and comfort of a private home.

If you’re thinking of hosting a fundraiser at your home, here are some tips on preparing your space to bring in guests and donations while minimizing problems.

WHY IN YOUR HOME?

So why host a fundraiser at your home? Beyond being house-proud or wanting to show off recent redecorating projects.

To start, hosting an event at your home makes the entire experience feel more personal and intimate for your guests. Because most homes accommodate fewer guests than a reception hall or public venue, the invitation list is shorter and more intentionally chosen. The smaller guest list makes it possible for each guest to meet and talk to the beneficiary and host, adding to a more welcoming feeling.

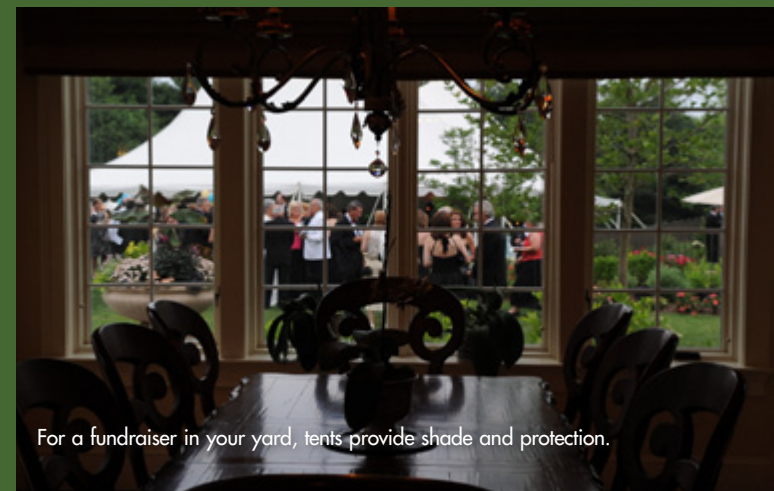
“I think guests come with expectations that they can interact with members of the organization personally,” says Jan White, of Meetings By Design. At larger galas with hundreds of people,

attendees likely won’t know everyone else, and may not receive as much information or get the chance to talk with a member of the organization. But smaller house parties change guests’ expectations, and allow them to ask questions and talk one-on-one with organization members about such things as how their donation will benefit the organization.

Not only does hosting at your home allow for a more intimate fundraiser, it also makes the beneficiary more credible to your guests. By hosting, you’re showing guests you trust the organization and their mission, and are willing to support them even by opening your doors for them.

“Receiving this kind of generosity and trust is very special to us and we think that it transfers to the attendees of an event,” says Sophie Tentrop of Home of the Sparrow.

A fundraiser at your home also provides more control over the event. Many rental venues have restrictions on details such



For a fundraiser in your yard, tents provide shade and protection.

Photos courtesy Chester County Community Foundation, of the Diederich home

Your Taste. Your Lifestyle. Your Budget.
Your Total Flooring Solution.

Heritage Floors INC.

Rustic Hardwood, Lancaster, PA

Carpet

Tile

Laminate

Luxury Vinyl

Visit our showroom for expert guidance and design inspiration. We also offer in-home consultations. Contact us today!

EZ Roll Shades

717-687-7906 • carpetlanasterpa.com • 60 N. Ronks Road, Ronks, PA 17572

#PA062387

- All types of flooring
- Lots of remnants in stock
- Start-to-finish service
- Free estimates
- Free design services
- Guaranteed installation
- Backsplashes, showers, fireplaces, and more!



THE RESIDENCES
LIGHTHOUSE COVE ~ DEWEY BEACH

LIFE’S BETTER *at the beach.*

Situated on the Rehoboth Bay with views of the Atlantic Ocean, residents of Lighthouse Cove are able to enjoy unparalleled amenities, including **public beach access, on-site dining, a fitness center, rooftop pool and more.** New construction, 1 & 2 bedroom homes starting at \$459,900 – Call today to schedule a tour!



1301 COASTAL HIGHWAY, DEWEY BEACH, DE 19971 | 302-212-0002 | THERESIDENCESDE.COM

Specializing in Window Treatments, Home Decor & Interior Design

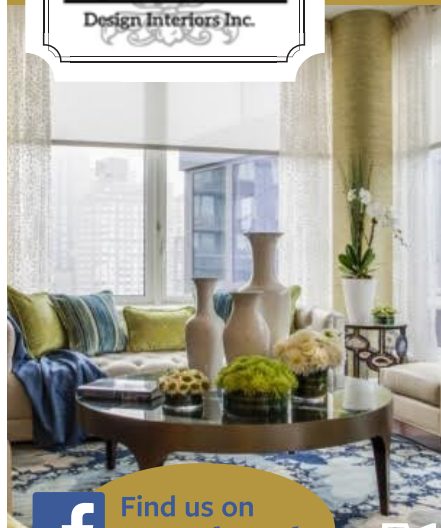
WWW.HERITAGEDESIGNINTERIORS.COM



RETAIL BOUTIQUE & WINDOW DESIGN STUDIO

1064 East Main St. (Rt 23)
Monday - Friday 10 - 5

New Holland, PA
Saturday 10 - 2



717.354.2233



Valances Draperies Cornices Sheers Blinds Shades Shutters Reupholstery Accessories
Bedding Pottery Area Rugs Furniture Wall Coverings Artwork Mirrors Floral Designs

MAIN STREET CABINET Co.

...because design matters



#1 DEALER IN USA!
PLATO
WOODWORK, INC.



5064 West Chester Pike
Newtown Square, PA
610-325-5500
www.mainstreetcabinet.com

*Quality design & sale of cabinetry/countertops for the kitchen - bath - office - bar
We advertise our own work! Stop by our showroom to see the difference.*

as decorations, which vendors you must use for catering and entertainment, and how long your event can run. But at your home, you decide—candles can glow along the edge of the room, your favorite caterer can provide the food, and the event can continue into the wee hours.

Remember—saving on renting a venue certainly helps the charity keep event costs lower, too, so more funds can go to its mission.

So, if you've hosted large family events or parties for friends, moving up to a fundraiser may be an easy step to take!

But in your home, you decide—candles can glow along the edge of the room, your favorite caterer can provide the food, and the event can continue into the wee hours.

PREPARING THE SPACE

Now that you've decided to host, what's next?

First, it's important to talk to the beneficiary to decide how many people to invite, who handles which details, and what expectations you each have.

"When preparing for an event at your home, it's important to be open about expectations," says Sophie Tentrop. "Who's taking care of food or catering, who's bringing wine and non-alcoholic drinks, and to what degree is access to the kitchen needed? Are you preparing a sit-down dinner for 10 people or a garden party for 60 people?"

Clarifying expectations early on helps the rest of the house prep run smoothly.

Once you know how many people to expect, what the arrangements are for food, and what kind of speaker or presentation you'll have, the rest of the house can be prepped accordingly. For a smaller gathering, there may be little need to reorganize your home. But for larger parties, furniture may

need to be moved to open up the space and improve the flow.

Also, try seeing your home as a guest would. Consider the rooms your guests will see—from arriving at the entry, the main room for mingling, a bathroom or two, a closet or extra space where coats can be stored.

Walk around to see what areas need prep-
paring for the event. What needs to be cleaned or de-cluttered (also consider what irreplace-
able or breakable things should be removed both inside and outside) and what furniture should move?

It's also advisable for the caterer to do a pre-visit to see where best to set up and prepare food. They may choose to work in your kitchen, or prepare in another room or a tent farther away from the party to keep from interfering with the guests.

Don't forget the outside of your home! When the weather is warm, your backyard or patio may serve as the perfect place to host your guests or for an overflow crowd. Mow the lawn, weed the flowerbeds, clean the patio, set up some lights around the yard and make sure there's room to put tables for food and beverages.

If you do choose to hold the party outside, make sure you have a backup plan in case of rain or changing temperatures.

KEEP IN MIND ...

Parking needs to be considered before guests arrive. Some homes have long drive-ways or extra land where cars can park, but many don't. If parking is limited, find out whether local police can close off part of a street to accommodate your guests' cars or post signs for parking on one side of the street. Make sure to include on the invita-
tions reminders to carpool or use Uber.

You may want to let your neighbors know about your upcoming party. This helps pre-vent competing events on the same day, which could make parking even trickier. Also, your neighbors will then have no cause for concern if they hear extra noise or activity from your house that day.

During the actual fundraiser, as host, you should be prepared to mingle. "The

host and hostess should be there actually hosting. That's their first and most impor-
tant priority," says Jennifer Cadwalader, a volunteer for Willowdale Steeplechase. This means welcoming guests when they arrive, introducing them to the organization and the cause, and helping them feel welcome. For a house party, many guests may be your acquaintances and will expect some face-to-
face time with you.

ADDING THE WOW

If you commit to hosting a fundraiser at your home, you'll want it to be a night your guests will remember—and a night they decide to support the cause with a donation.

First step, think about how you can inte-
grate the organization's mission into the event itself.

"To meet face-to-face and see how the organization actually works makes a lasting impact," says Jan White. For example, if you're holding a fundraiser for a group that provides students with access to the arts, consider having the students design the invi-
tations, showcase their artwork or talk about how the organization has helped them.

Next, remember your home may be the biggest "wow" of them all. Beautiful grounds and stunning architecture are found in homes all around *County Lines* country, perfect settings for memorable fundraisers. When preparing your home, think about your home's star feature—the spiral staircase that leads to a balcony, the living room's high ceilings and bay windows, the lush gardens surrounding the patio in the backyard—and make it the central location for your guests to be.

Not only will your guests love being able to see your home, they'll also be warmed by your hospitality. "Having an event at the home really is the star feature, and having that intimacy of hosts opening their homes to the guests," says Jennifer Cadwalader.

After weeks of prep work—cleaning, moving furniture, installing decorations, planning details, connecting with the ben-
eficiary—your efforts will all be worth it when your guests enjoy your beautiful home ... and make a generous donation. ♦

I'll Drink to That Good Cause

Fred Naddeo

CELEBRATE GOOD TIMES WHILE CHOOSING THESE WINES AND SPIRITS

GIVING BACK TO THE COMMUNITY FEELS good—we get a warm glow as others benefit from our good works. You've likely read about more and more companies run by people determined to do more than just make a profit—they want to help others. The causes these businesses support are as varied as the companies that contribute to them.

We'd like to shine a light on several companies in the beverage industry that have become known for their charitable contributions. After reading this, we hope you'll take the easy step of considering choosing these brands the next time you choose your wine and spirits.

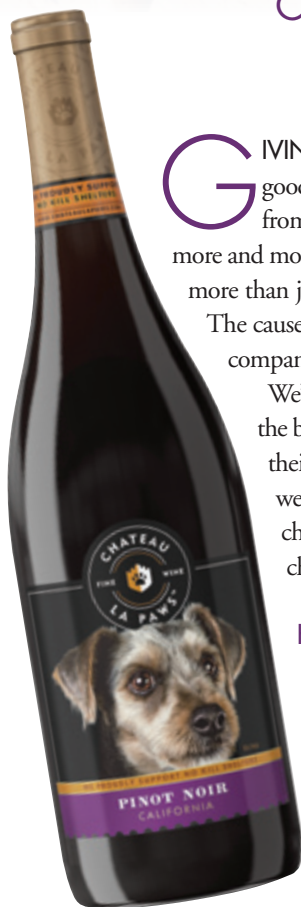
HELPING ANIMALS

If you want to support animal rescue groups, then Chateau La Paws is a wine for you. This brand from Rosenblum Cellars is a tribute to their founder's obvious love of dogs.

Located in the heart of California wine country, the company's goal is to make an affordable, everyday wine and to support an important cause—no-kill shelters. The idea is simple—keep our four-legged friends happy and healthy while they wait for their forever homes.

To date, Rosenblum Cellars has donated over \$100,000 to North Shore Animal League America, a leader in the no-kill movement as well as the world's largest no-kill animal rescue and adoption organization, supporting like-minded groups around the country.

Chateau La Paws has both red and white wines found in California wine sections. Look for the photos of adorable shelter dogs on their bottles.



ENVIRONMENTAL CAUSES

Musician Dave Mathews owns Dreaming Tree Wines, a collaboration between Dave and wine-maker Sean McKenzie. You may have seen the wines, but did you know they come from a Certified California Sustainable Winegrowing winery?

As you might imagine, the environment is important to people who make their living off the land, and following sustainability guidelines helps ensure the future health of vineyards. But Dreaming Tree goes a step further. As part of a solar energy project, they installed 17,000 solar panels across four wineries—the largest solar footprint in the U.S. wine industry—along with using recycled paper for labels and lighter wine bottles (for greener shipping).

To date Dreaming Tree has donated over \$1 million to environmental charities, such as The Wilderness Society, which, since 1935 has worked to protect millions of acres of wild lands in California and across the country.

Ask for Dreaming Tree cabernet sauvignon, pinot noir, sauvignon blanc or chardonnay.

SUPPORTING FIRST RESPONDERS

Launched in September 2018, Proper No. Twelve is an Irish whiskey created by Ultimate Fighting Championship fighter Conor McGregor. It's named after the postal district in Dublin where Conor grew up.



Not just a celebrity endorsement, Conor learned the whiskey business from his grandfather, Christopher "Jakes" Moore, and spent three years developing the blend for this first product from his company. The company donates \$5 from each case sold to local first responder organizations around the world—up to \$1 million annually. The whiskey sold very quickly in the U.S. and is continuing to be replenished.

Look for this smooth balanced whiskey with hints of vanilla, honey-like sweetness and toasted wood in the Irish whiskey section.

HELPING OTHERS

One company helped launch its brand by donating to nonprofit groups around the country. The popular spirits brand Tito's Handmade Vodka is heavily involved in charity work under the title "Love, Tito's"—turning spirits into love and goodness.

Founder Tito Beveridge started out donating products to charity events to get the word out about his new vodka being made in Texas. As the company grew, they began supporting more charities that were important to the staff.

Today, the charitable causes cover just about anything imaginable—from supporting U.S. service members, their families and veterans through Soldiers' Angels, to providing medical support for neglected communities worldwide through One Good Turn. Tito's also helps with disaster relief by supporting groups helping



victims of California wildfires and recent hurricanes.

But they don't stop there. Over the years, the staff of Tito's has been taking care of and rescuing dogs that wandered into their lives at the distillery. This evolved into "Vodka for Dog People" to help improve the lives of pets and their families. Tito's also provides funding for animal charities around the country.

To support this cause, purchase Tito's Vodka for Dog People merchandise on their website. You choose which organization receives your financial support at checkout from among five different charities.

Learn more online about Tito's charitable contributions, where you'll find a donation request form for 501(c)3 organizations requesting help for a fundraising event. Titosvodka.com/love.

If you have a desire to give back, look for these brands the next time you need to replenish your bar. ♦

What started as a hobby is now a career. Fred Naddeo began his wine journey more than 20 years ago when his wife bought a bottle of Black Tower Riesling to try something different. It marked the beginning of an exploration of the amazing world of wine that continues to this day. Fred is a wine specialist at the Springfield Fine Wine & Good Spirits store on Baltimore Pike. Learn more at FineWineAnd-GoodSpirits.com.



the Farmhouse

AT PEOPLE'S LIGHT

Chester County's premier venue for corporate events, galas, and special celebrations

Delight your guests with the relaxed elegance and charm of this historic 18th century farmhouse, recently renovated to include a stunning indoor pavilion perfect for cocktail hours and silent auctions. A dedicated team of event coordinators will seamlessly manage any event, large or small, as well as provide audio visual equipment, including a large display screen, sound system, podium, and more.

Proceeds from your event at The Farmhouse support the theatre and education programs at People's Light.

Contact The Farmhouse at 610.647.1631 x156 or thefarmhouse@peopleslight.org



PAINTED FURNITURE KITCHEN & BATHROOM CABINETS Pickup & Re-Delivery Available



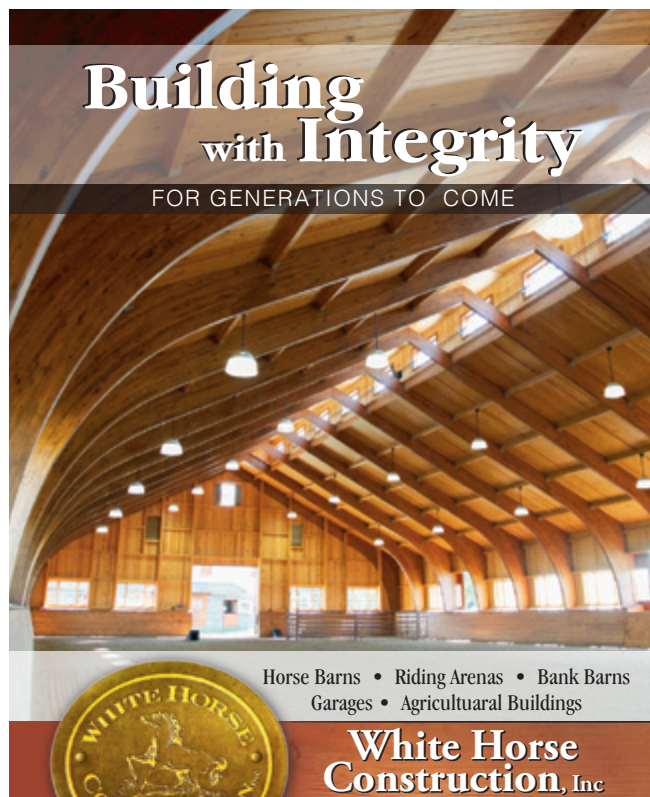
Open 7 Days a Week

2311 Pottstown Pike
Pottstown, PA 19465
Email: salvagedfc@mail.com
For a quote text pictures to
484-366-2221



Building with Integrity

FOR GENERATIONS TO COME



Horse Barns • Riding Arenas • Bank Barns
Garages • Agricultural Buildings

**White Horse
Construction, Inc.**

Parkesburg, Pa 19365
ph: 610-593-5559

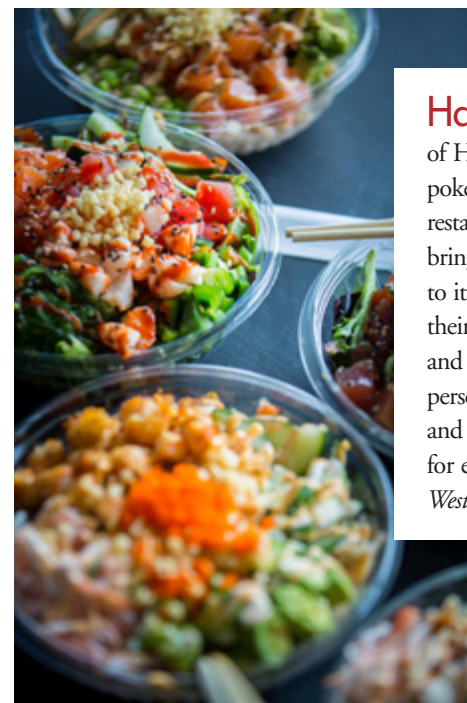


PA013217

www.WhiteHorseConstructionPA.com

[Food News]

A few of our favorite things to share this month about local food and drink



Hawaiian Twist. Get a taste of Hawaii in West Chester at this new poke bowl restaurant. With their first restaurant in Pennsylvania, **Poke Bros.** brings fresh veggies and high-quality fish to its authentic Hawaiian poke bowls. Try their signature bowls—Hula, High Tide and Wailea—or create your own for a personal twist. With bowls, poke nachos and mochi ice cream, there's something for everyone to enjoy! 124 E. Market St., West Chester. EatPokeBros.com.

Sweet Treats. Giving never tasted so good! The Chester County Community Foundation is hosting **Silver Sweet Charity** on March 25. This tasty fundraiser will showcase mouthwatering desserts from some of Chester County's finest chefs. Join the Foundation in celebrating its 25th anniversary of supporting local philanthropy as you sample everything from hand-crafted cheese-cakes to edible cookie dough—and then vote for your favorite. If you go, say hello to *County Lines'* food editor, Laura Brennan, who has a delicious job on the judges panel! ChesCoCF.org.



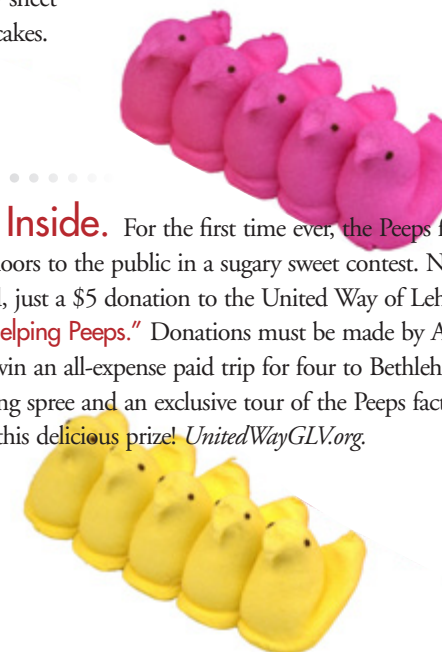
Smooth or Crunchy? Nutty for peanut butter? Then celebrate **National Peanut Butter Lovers Day** on March 1. With the U.S. consuming over a billion pounds of peanut butter each year, it's no wonder the salty and sweet spread is still in over 94 percent of American households today. Celebrate the day with a savory sheet pan peanut butter chicken or sweet peanut butter protein pancakes. More at PeanutButterLovers.com.

Pop of Info. Ever wonder why **movies and popcorn** are a thing, with a history stretching back to the 1920s? Theaters began selling the salty food to raise profits, and during the Great Depression families turned to popcorn as an affordable luxury. With only 35 calories, no cholesterol and plenty of fiber, popcorn is so popular that

Americans consume 14 billion quarts annually. The long history and health benefits have turned this buttery snack into a super food essential for movies—in theaters or at home. Popcorn.org.



A Peep Inside. For the first time ever, the Peeps factory is opening its doors to the public in a sugary sweet contest. No golden ticket needed, just a \$5 donation to the United Way of Lehigh Valley for **"PEEPS helping Peeps."** Donations must be made by April 8 for a chance to win an all-expense paid trip for four to Bethlehem, PA, a \$250 shopping spree and an exclusive tour of the Peeps factory. Don't miss out on this delicious prize! UnitedWayGLV.org.





RON'S
ORIGINAL BAR & GRILLE
Est. 1990

*Celebrating
30 years
of Ovals!*

74 E Uwchlan Ave. Exton, PA
610.594.9900 | www.ronsoriginal.com



Christopher
CHOCOLATES FINE FOODS
Making Life Sweeter Since 1986

- Scrumptious Chocolates & Truffles
- Gift Baskets of Tasty Treats
- All Your Favorite Candies & Snacks
- Sugar Free Chocolates & Candies
- Chocolate Covered Pretzels
- We Use PA's Own Wilbur Chocolate

3519 West Chester Pike, Newtown Square, PA
610.359.1669
ChristopherChocolates.com



MAKE YOUR *lover* PART OF HISTORY

schedule a consult with our wedding planner today

VICKERS
restaurant & bar

610.363.7998 || EXTON, PA
WWW.VICKERSRESTAURANT.COM



*Raise
your
glass!*

Choose your favorites from more than 10,000 exceptional wines and spirits. Simply visit your local Fine Wine & Good Spirits Premium Collection store or shop online at **FineWineAndGoodSpirits.com**.

FINE WINE & GOOD SPIRITS

[Brandywine Table]

The Fox's Kitchen

**RADNOR HUNT MEMBERS AND FRIENDS
SHARE THEIR FAVORITE RECIPES TO
BENEFIT THE HOUNDS FOUNDATION.**

Laura Muzzi Brennan

“It's no secret that foxhunters love a good party, a good drink, and especially good food.”

So begins *The Fox's Kitchen*, a cookbook created by Philadelphia's historic Radnor Hunt to benefit The Hounds Foundation, which promotes land conservation and proper hound breeding and care. More than a collection of members' 100+ favorite recipes, the scarlet-covered book gives a fascinating peek into foxhunting tradition and etiquette. It also pays homage to the country way of life, dear to The Hounds Foundation and Radnor Hunt members including cookbook committee chairperson Virginia McNeil.

I talked with McNeil and recipe curator Nicole Riegl in January, three months after *The Fox's Kitchen* release. The cookbook was so well-received—nearly all 2000 copies are gone—that 1500 more were scheduled to roll off the presses in late February. I was curious about the process of turning a raw idea into a fully-baked book, information I hope will help other groups taking on the charity cookbook challenge.

And a challenge it is—right up there with jumping fences and stone walls! *The Fox's Kitchen* was two years in the making and became a full-time job for McNeil, but she's quick to attribute the book's success to fellow Radnor Hunt members and friends who shared recipes along with their time, treasure and talent.

McNeil laughs that, while she doesn't list cooking among her strong suits, she is good at organizing projects and inspiring people, especially matching their talents to the right job.



And that's how Nicole Riegl—a nonprofit operations professional by day and food blogger by night—along with passionate home cook Lisa Davne found themselves testing recipes for carrots au gratin, dark chocolate hazelnut tart and apple cider rumtinis. She also recruited her husband, Collin McNeil, a Master of Foxhounds at Radnor Hunt and a gifted wordsmith, to write much of the text.

Once in place, the committee met monthly to tackle decisions, big and small—from whether to use spiral or hard binding to which photographer, book designer and editor could best bring their vision to the page.

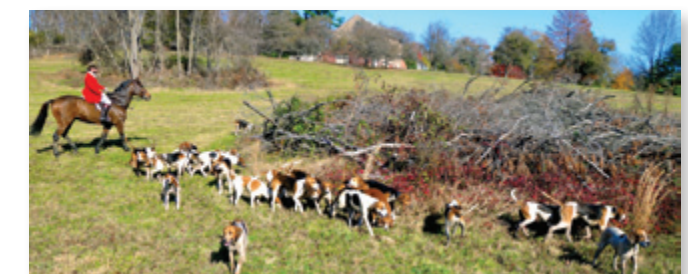
For the record, the 288-page hardbound book features showstopping photos by Lancaster food photographer Brian Donnelly and the editorial expertise of NYC-based Rebecca Ffrench. As for the time-consuming, albeit delicious, work of choosing recipes and getting dishes print- and camera-ready, check out the sidebar.

Devising a detailed business plan and fundraising were also essential to the cookbook's launch, says McNeil. She and her committee aimed to cover the \$100K cost completely, so all proceeds from the sale of *The Fox's Kitchen* could go straight to The Hounds Foundation.

But finding sponsors and planning events like the Paper Chase—a joint venture with Brandywine Red Clay Alliance where 100+ riders on horseback crossed beautifully conserved land—have value beyond raising funds. They're a

great way to generate enthusiasm for projects and to partner with folks who share the same mission.

Creating a cookbook like *The Fox's Kitchen* is a huge undertaking, but when doing good and eating well come together, it's sweet charity indeed.



Sweet Potato & Chestnut Soup

The recipe for this cozy soup from The Fox’s Kitchen comes with one of Charlie’s Tips (tidbits of cooking know-how from Charlie the Fox): “To roast fresh chestnuts, preheat the oven to 425°. Using a paring knife, make an X-shaped cut on the round side of each chestnut. Arrange them in a single layer on a rimmed baking sheet and roast for 10 to 20 minutes, until the chestnuts start to open, the skins peel back along the cut side, and the meat is tender when pierced with a knife. While still warm, peel off the outside shell and the papery skin.”



- 2 lbs. sweet potatoes
- 2 Tb. extra virgin olive oil
- 2 small yellow onions, thinly sliced
- 1 C. fresh roasted, canned or jarred peeled chestnuts, chopped
- ½ C. brandy
- 4 C. chicken broth
- 1 dried bay leaf
- 1 tsp. sea salt
- ¼ C. crème fraîche
- Chopped fresh chives, for garnish

Preheat the oven to 425°F. Line a rimmed baking sheet with parchment paper.

Using a fork, prick the sweet potatoes in several places and place them on the prepared baking sheet. Roast until they’re soft and can be pierced easily with a fork, about 1 hour 15 minutes. Remove from the oven. Let them cool completely, then peel and cut them into large chunks. Set aside.

In a large Dutch oven or soup pot, heat the olive oil over medium heat until it shimmers. Add the onions and cook, stirring, for 20 minutes, or until they’re soft and just beginning to caramelize. Add ¼ cup water, if needed, to help cook them down.

Add the sweet potato chunks, chestnuts and brandy and simmer for 2 minutes.

Add the broth, bay leaf and salt. Increase the heat to high and bring the soup to a boil, then reduce the heat to low and simmer for 15 minutes, or until the sweet potatoes start to disintegrate.

Remove the soup from the heat and discard the bay leaf.

Working in batches, carefully transfer the soup to a blender and puree until smooth.

A Look inside The Fox’s Kitchen Process

After Radnor Hunt members and friends including Radnor chef Tyler Turner submitted 200+ favorite recipes, Virginia McNeil, recipe curators Nicole Riegl and Lisa Davne along with their team got to work. Here’s how they turned this culinary treasure trove into a celebration of foxhunting, dining and community.

NARROW the POOL. Riegl and Davne looked for recipes that put interesting twists on familiar dishes. Irish Oatmeal Brûlée? Yes! Sausage Shepherd’s Pie. Yes! Yes! Recipes that made this first cut had to appeal to modern tastes (hold the Jello), be approachable and contain easy-to-find ingredients.

DIVIDE and COOK. Committee members divvied up recipes, made them at home and sent feedback to the curators on taste, ease of directions and presentation.

THROW a PARTY: Radnor Hunt members gathered at each other’s homes to sample dishes, share comments and cast ballots. No surprise that malted milk ball cake, chestnut and sweet potato soup, and Southern tomato pie got out the vote!

ARRANGE into MENUS and EDIT. With the help of professional editor Rebecca Ffrench, recipes were slotted into 15 menus from “Full of the Moon Roundtable” to “Tallyho, Let’s Eat!” Ffrench edited recipes for consistency of “voice” and measurements. With a nod to the beloved fox—always called “Charlie” by fox-hunters—she added Charlie’s Tips, a.k.a. helpful cooking hints.

DO a PHOTO SHOOT or TAKE PICTURES: Radnor Hunt members loaned fox-themed serving pieces to Riegl and Davne who worked as “sous chefs” with food stylist Dan Macey to get dishes ready for their close-ups. Then, photographer Brian Donnelly snapped every sweet and savory detail.

Ladle the soup into individual serving bowls and top with a dollop of crème fraîche. Garnish with chopped chives and serve.
Makes 6 servings.

Dark Chocolate Hazelnut Tart

Recipe courtesy of The Fox’s Kitchen.

For the crust:

- 1 ½ C. gingersnap cookie crumbs
- 6 Tb. (¾ stick) unsalted butter, melted
- ¼ tsp. fine sea salt

For the filling:

- 1 C. hazelnuts, coarsely chopped
- 1 C. heavy cream
- 10 oz. high-quality bittersweet chocolate, finely chopped
- ½ C. chocolate-hazelnut spread, such as Nutella, room temperature
- ½ tsp. coarse sea salt

Preheat the oven to 350°F. Position a rack in the lower third of the oven.

Make the crust: In a medium bowl, stir together the gingersnap crumbs, butter and salt. Press the mixture evenly over the bottom of

a 9-inch springform pan. Bake the crust for 7 minutes, then transfer to a wire rack and let cool completely in the pan.

Make the filling: While the crust bakes, put the hazelnuts in a baking dish and toast in the oven, stirring once, for 3 to 5 minutes, until they just start to turn golden. Transfer the pan to the rack next to the crust and let cool.

In a medium saucepan, bring the cream to a boil over medium-high heat. Remove it from the heat and add the chocolate. Let it sit for 5 minutes. Then whisk until the mixture is completely smooth and combined.

Whisk in the chocolate-hazelnut spread. Stir in the toasted nuts, (setting aside a tablespoon for garnish) and the coarse sea salt.

Pour the filling into the cooled crust and freeze until just set, about 25 minutes (do not let the tart fully freeze). Transfer the tart to the refrigerator until ready to serve.

Bring tart to room temperature, for about 20 minutes before serving. Garnish with reserved chopped hazelnuts. Slice and serve.

Makes one 9” tart.



Irish Soda Bread

Recipes that go into charity cookbooks are usually tried and true, often family recipes. Here’s one from my mother that would make a nice addition to any book. I have memories of flour dusting every surface in our kitchen as she made loaf after loaf of this bread to give as Christmas gifts. Now, I bake a few for our annual St. Paddy’s Day dinner, when we serve it with the cottage pie below.

- 9 C. flour
- 3 Tb. baking powder
- 1 Tb. baking soda
- ¼ tsp. coarse kosher salt or a few pinches regular table salt
- 1–2 Tb. sugar, optional
- 3 large eggs
- 9 Tb. melted butter or vegetable oil
- 1 qt. light or regular buttermilk
- 3–4 C. raisins



Preheat oven to 350°. Grease and flour three loaf pans.

In a large bowl, mix together flour, baking powder, baking soda, salt and sugar if using.

In another bowl, beat eggs and stir in melted butter.

Add wet mix to dry mix and stir in buttermilk. Fold in raisins. (I usually mix the dough with my hands, making sure to mix just until ingredients are combined.)

Divide dough among 3 pans. Drop pans gently on counter to get rid of any air pockets. Using a knife, cut a cross into top the dough.

Bake on the middle rack of oven for 50–60 minutes or until knife comes out mostly clean.

Makes 3 loaves.

Cottage Pie

Inspired by Alton Brown’s shepherd’s pie recipe.

For the mashed potato layer:

- 3 lbs. russet or your favorite mashing potato, peeled and cut into ½” pieces.
- 4 C. whole milk
- Pinch of salt
- 8 oz. sour cream
- 2–3 Tb. snipped fresh chives
- Salt to taste

For the beef layer:

- ¼ C. olive oil
- 1 large onion, chopped (about 2 C.)
- 6 cloves garlic, minced
- 3 lbs. ground beef (80% lean/20% fat)
- 2 tsp. kosher salt, plus more to taste
- A few grinds of pepper
- 4 Tb. flour
- 1 ½ Tb. tomato paste
- 2 C. beef broth
- 2 Tb. Worcestershire sauce, plus more to taste
- 1–1 ½ Tb. chopped fresh rosemary leaves
- 2 tsp. fresh thyme
- 2 lb. frozen vegetable mix (carrots, corn, green beans and peas), thawed and at room temperature
- Sweet paprika



Preheat oven to 400°.
Place potatoes in a large saucepan and pour milk over. Bring to a slow simmer over medium-low heat and cook until just tender, about 20 minutes.
Remove potatoes with a slotted spoon and place in a large bowl. Mash and add cooking milk back in, one

ladleful at a time until you reach desired consistency. (You will probably have 1 C. milk left over.) Mix in sour cream, salt and chives. Set aside.
While potatoes cook, heat olive oil in a large skillet or Dutch oven over medium high heat and add onion. Stirring frequently, cook for 3–5 minutes until onions start to soften. Add garlic and cook for one more minute. Add beef and salt and cook until beef browns. Sprinkle flour over meat and toss to coat. Cook for another minute. Add tomato paste, beef broth and 2 Tb. Worcestershire sauce, rosemary and thyme. Bring to a boil. Cover and reduce heat to low. Cook for approximately 15 minutes until sauce thickens.

Taste and add more salt, pepper and Worcestershire sauce to taste.
Stir in vegetables.
Divide beef mixture between two large casserole dishes and spread evenly. Divide potatoes and top beef, using a spatula to smooth the potatoes into an even layer. Drag a fork gently through the potatoes to create a crisscross design. Dust with sweet paprika.
Bake for 20–25 minutes until beef mixture bubbles a little around the edges of mashed potatoes. If potatoes do not brown, place under broiler for 1–2 minutes.
Makes 2 large casseroles, 12–14 servings. ♦

Laura traces her love of all things culinary to the first time she leafed through her mother's Betty Crocker's Cooky Book—which still occupies a place of honor among her 700+ cookbooks. A passionate supporter of local food, she co-founded a farmers market, judges area food contests, and anticipates restaurant openings with the excitement most people reserve for winning a Mega Millions jackpot.



For more great recipes visit
CountyLinesMagazine.com

Looking to make
the best educational choice
for your child?

Choose Pennsylvania's most experienced, tuition-free, K-12 online public school.

PACyber
The Pennsylvania Cyber Charter School

The Learning Never Stops
PACyber.org

Where friends become family.

A MISSION TO SERVE
This vibrant, senior community provides for the needs of older men and women with Independent Living, Personal Care, and Skilled Nursing. Residents enjoy a homey, comfortable atmosphere with a Quaker mission.

AN ADAPTABLE APPROACH & A HEART FOR COMMUNITY
Rather than having residents adapt to Friends Home, we work to adapt our environment to their individual interests and needs. In addition, residents actively participate in various intergenerational programs throughout the community and enjoy giving back.

Friends Home
128 Years in Kennett

147 W. State Street, Kennett Square
610.444.8785 | FHKennett.org

Independent Living | Supportive Independent Living
Personal Care | Skilled Nursing

Since 1932, **Ball and Ball** has set the standard for the finest reproduction and restoration of 18th Century through Victorian Era antique hardware and lighting. Meticulously crafted period house and furniture hardware, fireplace accessories, sconces, chandeliers, lanterns and candlesticks are all made on the premises in brass, tin, copper, pewter, hand-forged iron, and bronze.

Hours Mon-Fri 8-4:30, Sat 9-1 (Oct-Mar)

BallAndBall.com Exton, PA 1.800.257.3711

Index to Advertisers

Look for *County Lines* at Wegmans, Wellington Sq. Bookshop, at Events and Affiliates. Check our website's Get A Copy page.

Arthur Hall Insurance	26	Flowing Springs Landscape Design	17	Phoenixville Beer & Wine Festival.....	60
Ball & Ball	81	Friends Home in Kennett.....	81	Phoenixville Federal Bank & Trust.....	24
Berkshire Hathaway Fox Roach /		Gawthrop Greenwood, PC.....	25	Pleasant View Retirement Community	23
Country Properties	10	General Warren	80	Renaissance Academy	64
Berkshire Hathaway Fox Roach /		Glen Mills Senior Living.....	21	The Residences at Lighthouse Cove.....	69
Holly Gross Group.....	6	Greystone Hall.....	24	Resident Theatre Company	64
Brandywine Fine Prop./Sotheby's		The Haverford School.....	67	Ron's Original Bar & Grille.....	76
K. Nader	9	Heritage Design Interiors, Inc.....	70	Salvaged Furniture.....	74
Buckley Brion McGuire & Morris LLP	26	Heritage Floors, Inc.	69	Spring Oak by JP Orleans.....	83
Cat's Incredible Cat Show.....	61	Historic Sugartown.....	60	Sugarbridge Kitchens & Baths.....	back cover
Chester County Community Foundation...57		Home of the Sparrow.....	59	Sunset Hill Jewelers / Fine Arts Gallery...64	
Chester County Food Bank	61	Key Financial, Inc.....	3	SV Dental	19
Chester County Hospital	4	King Construction.....	12	Thorncroft Equestrian Center.....	60
Christopher Chocolates/Fine Foods.....	76	LGBT Equality Alliance	59	Treetops Kitty Cafe	60
Delaware Art Museum	14	Lionville Natural Pharmacy.....	20	Uptown! Knauer Performing Arts Ctr.	64
Delaware Breast Cancer Coalition.....	61	MacElree Harvey	58	Vickers Restaurant.....	76
The Devon Senior Living	18	Main Street Cabinet Co.....	70	Walter J. Cook Jeweler.....	7
Donald Pell Gardens	14	Media Theatre	25	West Laurel Hill.....	62
E. C. Trethewey Building Contractors, Inc. 12		Mostardi Nursery.....	22	Westtown School	22
Elverson Antiques Show	25	On the Go Kids	67	White Horse Construction, Inc.....	74
The Farmhouse at People's Light	74	Penn Medicine.....	5	Willow Valley Communities	2
Fine Wine & Good Spirits	76	PA Cyber Charter School.....	81		

This Index is provided as an additional service to our advertisers. County Lines takes no responsibility for errors.

County Lines is available at the following advertisers. See our Advertiser Directory on CountyLinesMagazine.com.

A Neighborhood Built on Community.



New first-floor owner's suite designs now available!

Tree-lined sidewalks. Interconnected streetscapes. Luxury living with a maintenance-free lifestyle. Located in Malvern, Pa., Spring Oak is a community where neighbors become friends, kids play outdoors on the spacious playground, and families can enjoy leisure time at the state-of-the-art Clubhouse with exercise facility, gathering room and swimming pool — all within walking distance of home. With flexible home designs featuring new first-floor owner's suite floor plans and bonus rooms and a top-rated school district, your family will find everything they need and more at Spring Oak.

Call to schedule a tour today.

SPRING OAK
MALVERN, PENNSYLVANIA

Townhomes, carriage homes and single-family homes from the upper \$400s to \$800s

JP Orleans
1918 100 Years of Building Trust 2018

JPOrleans.com

484.321.2845

133 Spring Oak Drive, Malvern, PA 19355



CHESTER COUNTY

in Bloom

PHOTO CONTEST

Send us your best photo of Spring in Chester County!

The winner receives a **Family Membership to Longwood Gardens!**

1. Like us on Facebook @CountyLinesMagazine.
2. Upload & hashtag your **one** best photo **#chestercounty-inbloom** OR send it to **info@valleydel.com**.
3. Tell us when and where it was taken.

ENTRIES MUST BE RECEIVED BY **APRIL 7, 2019!**



Check website for rules

COUNTY LINES
MAGAZINE