



Hudson Valley by Wood-Mode.

For your nearest Wood-Mode dealer, call

Wall & Walsh, Inc.
8320 West Chester Pike
Upper Darby, PA 19082
610-789-8530
or visit
www.wood-mode.com



For your home. For your life.
For our environment.

©2013 Wood-Mode, Inc.

AUGUST 2013

\$3.95

COUNTY LINES

Unique places, interesting events, fine dining, great shopping and the special lifestyle of Southeastern Pennsylvania and Northern Delaware



Very Best Dog
Senior Lifestyles
Visit Malvern
Arts Guide



Discover CECIL COUNTY *Shorelines*

*Visit historic towns & magnificent
waterfront restaurants!*

Explore marinas, or a community park to drop a line and nab a catch!

*Hike along wooded trails, winding streams,
or out to Turkey Point Lighthouse!*

Experience the hospitality at one of our waterside inns!

*And . . . at the end of the day, watch the sunset
spread across a river horizon!*

SeeCecil.org

CECIL COUNTY
MARYLAND

Maryland of DISCOVERY

GREATER CARE.

For the ones you care about greatly.

Quality healthcare means identifying and preventing problems before they happen. That's why Crozer-Keystone Health System has a dedicated Quality and Patient Safety Team... a daily Safety Check-In for hospital leadership... and a daily Safety Huddle for staff members. Greater focus on safety is one more example of the greater care provided by the professionals of Crozer-Keystone.



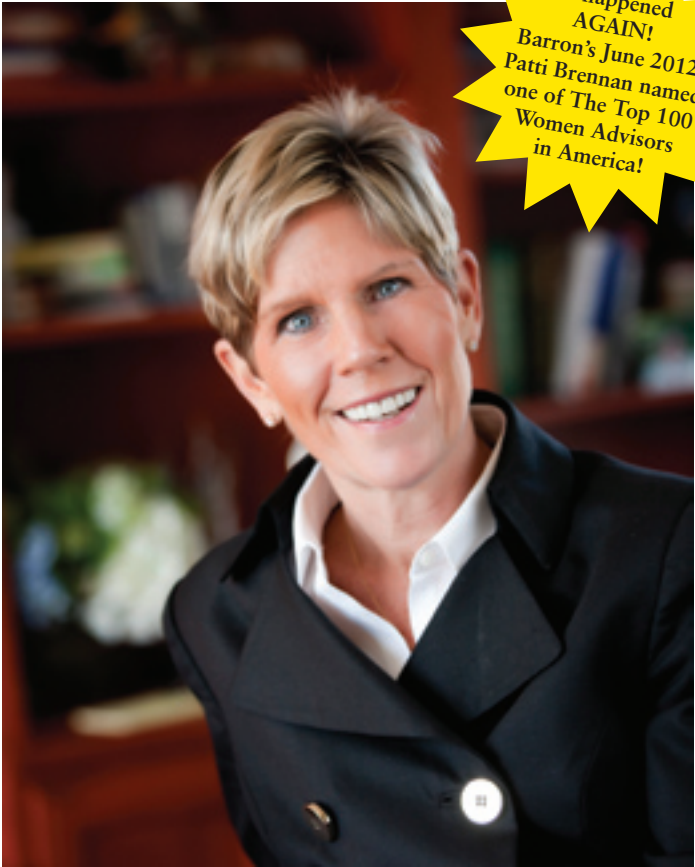
www.crozerkeystone.org | 1-800-CK-HEALTH

CROZER
KEYSTONE
HEALTH SYSTEM

Nationally Recognized

But Close to Home

It happened AGAIN!
Barron's June 2012
Patti Brennan named
one of The Top 100
Women Advisors
in America!



Patti Brennan CFP®

RECOGNIZED IN:

Barron's – Top 100 Women Financial Advisors (2006-12)
Fortune – One of America's Top 100 Independent Advisors (2008)
Wealth Manager – 50 Most Influential Women in Wealth (2009)
Worth – One of the Nation's Top Wealth Advisors (2009, 2010, 2011)
The 50 Top Women in Wealth – Wealth Manager Magazine (May 2010)
Philadelphia Business Journal – #2 Top Wealth Advisor (2010)
Registered Rep – Top 50 Independent Broker/Dealer Women Advisors (2011)
Barron's – Top 1,000 Financial Advisors (2006-12) <i>Only 40 Recognized in Pennsylvania (And the Only Woman in 2012!)</i>

Raised in Radnor, PA, Patricia Brennan has been providing Wealth Management advice *right here in West Chester* for over 25 years. She is a Georgetown University graduate and earned her CFP® designation in 1990. She is a recognized leader in her industry and serves as the first Chairwoman on the National Advisory Board for Royal Alliance. *Patti has just been selected as one of 400 Top Advisors by The Financial Times, another leading global brand and highly respected worldwide.* On a local level, Patti, her husband, Ed, and their four children reside in *West Chester*, where she is also active in her community. Patti currently serves as a board member for the Chester County Economic Development Council, Cuddle My Kids, and for The Chester County Hospital and Health System.



1560 McDaniel Drive • West Chester, PA 19380
(610) 429-9050 • (610) 429-9279-fax
www.keyfinancialinc.com



Builder Of Warm Gathering Places.

For twenty years, E.C. Trethewey has been crafting custom kitchens, homes, renovations and additions with the utmost attention to detail. Whether it's a historic restoration or new construction, our commitment to the historic traditions of building always receive a warm welcome.



1220 HORSHSHOE PIKE • DOWNINGTOWN, PA 19335 • 484.593.0334

WWW.ECTBUILDERS.COM

Securities and Advisory Services offered through Royal Alliance Associates, Inc., Member FINRA/SIPC and a registered investment advisor. Advisory services offered through Key Financial, Inc., a registered investment advisor, not affiliated with Royal Alliance Associates, Inc. *Fortune's* Top 100 Independent Advisors is based upon assets under management. *Worth's* Nation's Top Wealth Advisors are selected based on experience, education, certifications, fiduciary status, compliance record, wealth management services, methods of compensation, and scope of current business. For more information visit: www.worth.com/index.php/about-worth. Candidates for the *Philadelphia Business Journal* and *Barron's* were determined by The Winner's Circle. Candidates were valued on criteria such as assets under management, revenues, experience, and record of regulatory compliance and complaints. Candidates were further vetted based on in-depth interviews and discussions with management, peers and customers, as well as professional achievements and community involvement. The Winner's Circle does not receive compensation from participating firms or their affiliates, financial advisors or the media in exchange for rankings. In addition to the criteria used for the *Barron's* article and the *Philadelphia Business Journal*, *Wealth Manager* magazine takes into consideration service to industry organizations and mentoring to others. Third-party rankings from rating services or publications are no guarantee of future investment success. Working with a highly-ranked advisor does not ensure that a client or prospective client will experience a certain level of performance or results. These rankings should not be construed as an endorsement of the advisor by any client nor are they representative of any one client's evaluation. Registered Rep Magazine: Advisors are ranked by assets under management, effective Nov. 1, 2011. Only those advisors for whom a majority of assets correspond to retail clients were eligible for the list.

Holly Gross Group

Holly
Gross

Gus
Brown

Harry
Price

Tara
Rucci

Dick
Gross

Honesty ♦ Professionalism ♦ Unparalleled Service

Call 484.678.0367 Office 610.431.1100

www.HollyGross.com



**Fox & Roach,
REALTORS®**



New Listing

UNIONVILLE

Set on 74 acres, the charming c.1806, 5BR, 4.1BA home retains an antique patina but has an addition with new Kitchen, Family Room & Master Suite. Great 6 stall barn. \$2,485,000



New Listing

NORTH EAST, MD

Overlooking the North East River, this charming 4BR, 4.2BA home sits on 7+ waterfront acres & was tastefully redone including a fabulous Kit. & Master Suite! \$1,899,900



New Listing

WARWICK TOWNSHIP

Rock Run Farm contains 98+ acres, magnificent specimen trees, 3 ac. lake & the main house is privately set down a very long lane. The home is in need of total restoration. \$1,800,000



New Listing

EAST FALLOWFIELD TOWNSHIP

On 63.1 park-like acres, Fineskinde Farm is like owning your own preserve! 4BR, 2.1BA, mainhouse (c.1700 with later additions), great stone barn, & several rental units. \$1,799,900



UNIONVILLE

C.1850 barn conversion with formal rooms. 1st fl MBR suite plus 4 add'l BR & 4.2 BA. Finished Lower Level plus 2BR, 1.1 BA Guest/Pool House, Unionville Schools. \$1,499,900



EAST BRADFORD

Beautiful 4BR, 4.1BA home opened for Chester County Day. Magnificent Kitchen/Family Room & baths, reconstructed barn - all on 10 acres. Great location on a quiet road! \$947,900



BIRMINGHAM TOWNSHIP

Located in the historic district, sits this 4BR, c.1837 serpentine stone home on 10 acres with a small barn. This is a great opportunity! Unionville Schools. \$799,900



New Listing

BIRCHRUNVILLE

This 4BR, 2.1BA antique home rests on 9 private acres on a quiet country road. First floor Master Suite, spacious Living Room, newer Kit. & in-ground pool! \$767,900



UWCHLAN TOWNSHIP

You must see this Ann Capron designed 4BR, 3.1BA home on 1.5 acres with spectacular Wolff pool, fabulous Great Room & gourmet Kitchen. Overlooks the Brandywine! \$649,900



New Listing

WEST CAIN TOWNSHIP

This well maintained 4BR, 5BA home is adjacent to the 900+ ac. Hibernia Park & enjoys tranquil water views of Chambers Lake from the deck & MBR balcony! \$621,500



WEST CAIN

3BR, 2.1BA c.1787 stone home bordering Hibernia Park. Also a great barn with garage space below & large party space, 1BR, 1BA guest quarters - great views!!!! \$620,000



WEST BRANDYWINE TOWNSHIP

This charming c.1777 4BR, 2BA home sits on 3.8 acres & used as organic farm for last 5 yrs. New Kitchen, large Barn, horses ok, fencing - Low Taxes! \$449,900



OUR FAMILY — taking care of — YOUR FAMILY

ENDOCRINOLOGY
FAMILY PRACTICE
GERIATRIC MEDICINE
INTERNAL MEDICINE

Gateway Medical Associates, in Chester and now Delaware County, has been serving our community since 1996. Gateway strives to provide the highest quality primary and specialty care with a focus on our patients' wellbeing and health.

Our 39 physicians and nurse practitioners provide quality care from any of our 9 convenient locations throughout the County.

NEW PATIENTS ALWAYS WELCOME.

You can now schedule appointments online!

VISIT OUR PATIENT PORTAL AT
GATEWAYDOCTORS.COM
610.423.8181

MEET OUR NEW PHYSICIANS:

Katherine Chin, M.D.

Internal Medicine
of West Chester
Starting at the end of July

Neema Chokshi, M.D.

Endocrinology Associates
Starting in September

Charles Catania, M.D.

Myers, Squire and Limpert
Starting in September

VISIT OUR NEW PRACTICE

joining July 1st

Gateway Family Practice Newtown

Maria DeMario, D.O.
Newtown Business Center
4667 West Chester Pike
Newtown Square, PA 19073
P 610.356.7870
F 610.594.2625



NCQA Level 3 Certified Patient
Certified Medical Home Practice
Meaningful Use Recognized



COATESVILLE | DOWNINGTOWN | LIONVILLE | WEST CHESTER | NEWTOWN SQUARE

If we were in Europe, we'd all be on holiday for the month of August. Instead, we've been working on issue number 432! August marks *County Lines Magazine's* 36th year of publishing—quite a run. We hope you enjoy this issue, where we celebrate the good life.

And what's a better start than watching a little girl, a dog and a tutu? Photographer Kathy Azar had so much fun shooting the cover, she filled our pages with pet shots (including one with daughter Peyton) to illustrate Emily Hart's article, "The Very Best Dog." There's more animal coverage in "Call of the Wild," where Kirsten Werner tells us how coyotes have found a good life in Pennsylvania.

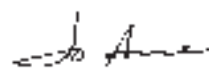
To find the good things in Malvern, Jaimielynn Cooper tours this charming borough off the bustle of Lancaster Avenue with its history, shopping, dining and events to bring us back. And Ed Malet tells us about the good life in senior communities, where "Seniors Have All the Fun" as they enjoy tennis, boating, games, gardening and more.

There's more fun for the season to come in our 5th annual "Fall Guide to the Arts," your preview to what's happening at local theaters, music venues and museums. Take in a performance at People's Light, DuPont or Media Theatre, visit the exhibits at the Delaware Art Museum, Winterthur or Longwood Gardens—or maybe at a less well-known venue.

Our coverage of the good life includes a quick course on positive psychology from Feel Great Coaching's Steve Urlenbrock, news of a gleaned project at Rushton Farm in "Sharing the Bounty," and tantalizing barbeque recipes in Laura Brennan's Brandywine Table column.

As always, our pages are full of the Best Local Events, some Of Special Note, plus others that are Good To Know.

Thank you for reading *County Lines*.


Jo Anne Durako
Editor

Your guide to Chester County & Beyond...

COUNTY LINES
MAGAZINE

Pick Up Your Copy Today!

You can find a copy of *County Lines* at over 150 affiliates. Visit our Get A Copy page at CountyLinesMagazine.com for more information. Or purchase a copy on newsstands at your local Whole Foods, Giant, Wegmans, Super Fresh, Barnes & Noble and at Janssen's Market.

COUNTY LINES MAGAZINE

August 2013

Volume XXXVI, Number 12

PUBLISHER

Edwin Malet

EDITOR

Jo Anne Durako

ART DIRECTOR / PRODUCTION

Alex Bianco

ASSOCIATE EDITOR

Marci Tomassone

ASSISTANT EDITOR

Jaimielynn Cooper

DINING OUT EDITOR

Lise Monty

FOOD EDITOR

Laura Muzzi Brennan

ACCOUNT EXECUTIVES

Sue Angelucci-Sontagh

Chrisy Holsopple

Rick Latham

BUSINESS MANAGER

Debra M. French

CONTRIBUTING WRITERS

Laurel Anderson

George Fitzpatrick

Matt Freeman

Emily Hart

Cooky McClung

Carol Metzker

William Woys Weaver

EDITORIAL INTERNS

Eva Greenholt

Katarina Troutman

CONTRIBUTING PHOTOGRAPHER

Alix Coleman

To get a copy of *County Lines*, check our website's Get A Copy page or purchase one at Barnes & Noble, Giant, Wegmans, Whole Foods and Chester County Book Company.

Contact us at:

ValleyDel Publications, Inc.
893 S. Matlack Street, Ste. 150
West Chester, PA 19382.
610-918-9300. Info@ValleyDel.com
Subscriptions: \$39/year.



County Lines Vol. XXXVI, No. 12. Copyright, 2013 by ValleyDel Publications. All rights reserved. *County Lines* and *County Lines Magazine* (ISSN 0195-4121) are registered names of ValleyDel Publications, Inc. Use of these names without the consent of ValleyDel Publications, Inc. may subject the infringer to penalty and suit as provided by law.

CountyLinesMagazine.com

Brandywine Fine Properties

Sotheby's
INTERNATIONAL REALTY

Willowdale Town Center | Kennett Square, Pennsylvania | 610.474.6520 | www.BFPSIR.com



Brett Jones 302.420.6644 | Karen Nader 484.888.5597



Queens Rangers Lane | Birmingham Township
West Chester | 4.2 Acres | \$1,899,000



www.BrettandKarenProperties.com



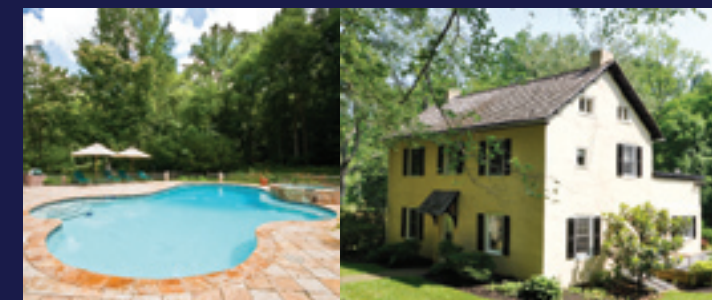
Stonepine Drive | Kennett Township | 2 Acres | \$995,000



Stonepine Drive | Kennett Township | 1.7 Acres | \$699,000



Glenrose Rd | East Fallowfield Township | 43+ Acres | \$1,095,000



Green Valley Road | Newlin Township | 16+ Acres | \$1,049,000

WALTER J. COOK JEWELER

Established 1946



Chestnut Village Shoppes | 36 Chestnut Road | Paoli, PA 19301

610.644.5347

www.walterjcookjeweler.com

CONTENTS

VOLUME 36, NUMBER 12 August 2013

COUNTY LINES
MAGAZINE



AUGUST 2013

24

MARK YOUR CALENDAR

26

SHARING THE BOUNTY
Gleaning at Willistown

Fred de Long, Willistown Conservation Trust

28

MALVERN: A PERFECT MIX

Jaimielynn Cooper

34

THE VERY BEST DOG

Emily Hart

39

CALL OF THE WILD

Eastern Coyotes in Pennsylvania
Kirsten L. Werner, Natural Lands Trust

41

FALL GUIDE TO THE ARTS

49

SENIORS HAVE ALL THE FUN

Ed Malet

52

GUIDE TO SENIOR COMMUNITIES

60

BRANDYWINE TABLE: Time to Barbeque

Laura Muzzi Brennan

DEPARTMENTS

12 BEING WELL

15 GOOD TO KNOW

17 OF SPECIAL NOTE

18 BEST LOCAL EVENTS

59 FOOD NEWS

66 INDEX



Cover photo by Katherine Azar Photography

Living the Good Life

Use your strengths to produce authentic happiness and well-being.

Steve Uhlenbrock, Feel Great Coaching

If you're not satisfied with the way your life is going, you're most likely living life "south of neutral." If you're clinically depressed or anxious, then you're definitely living life way below "neutral." Our goal is a life lived as much "north of neutral" as possible. Living the happy life. Living the good life. Living the full life.

Some people think they can't improve their level of happiness. But the science of positive psychology says they're wrong! While it's been shown that about 50% of our happiness is attributed to genetics, and 10% comes from life circumstances we can't control, that leaves us a whopping 40% of happiness that's in our own hands through intentional activities.

Sound good? Then read on.

Positive psychology is the scientific study of what goes right in life and what makes life most worth living. And positive psychology coaches help people live life above neutral, with the goals of increasing happiness, good character, the bottom line in the work place, health, well-being and the like. It's about focusing on what an individual does well and strengthening those areas to increase happiness and satisfaction in life.

In 1998, while president of the American Psychological Association, Dr. Martin Seligman founded the science of positive psychology. According to Seligman, current Director of the Positive Psychology Center at the University of Pennsylvania, positive psychology principles can be separated into five areas: pleasure, engagement, relationships, meaning, and achievement. Following

his theory, if you're doing well in all five areas, you're living the full life.

Here's more about the key areas and what you can do to improve your happiness.

Pleasure involves having more positive emotions than negative emotions and is known as "surface level" happiness. An example is the happiness you feel when you receive a bouquet of flowers: it makes you happy in the moment, even if it doesn't ultimately change your life. To improve pleasure, you can do such things as watch a show you enjoy, play a game you like, give someone you love a hug, and make a point to do something that will make you happy everyday.

Engagement is when you're so deeply involved in an activity—work, a sport or a hobby—that you get "in the zone." In positive psychology, it's called *flow*. This can happen if you really enjoy cooking, playing music, reading or similar past times. Engagement typically happens when your level of ability is matched by the challenge of the task. To increase engagement, you'll want to put energy into activities that you do well and continue to challenge yourself.

Relationships acknowledge that *other people matter!* The happiest people are those who have good relationships and have *real* social networks (not just Facebook and Twitter). Being around and involved with other people has been shown to improve happiness and well-being. For this area, join a club or an organization with similar values and interests to yours. Make it a priority to stay in touch with your friends and family members.

Meaning, purpose and direction in life come from belonging to and serving something you believe to be bigger than yourself. For greater meaning in your life, you can volunteer at a local shelter or a charity you support. Make time to do something altruistic.

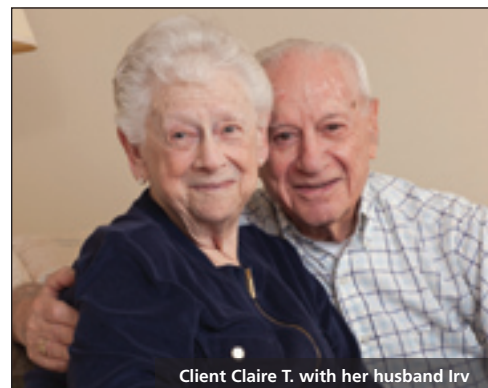
Achievement is accomplishing personally meaningful goals. This can be attained by winning at games, fulfilling a strategy you've set, accomplishing tasks. One way to improve this area is to set a

goal you want to accomplish, work on it, and stick to it!

Finally, improving happiness takes work. You can't improve your happiness by attending one inspirational workshop; it's something you have to work at on a regular basis. But it's well worth the effort! After all, who doesn't want to be happy? ♦

Steve Uhlenbrock, president of Feel Great Coaching, is a positive psychology coach and adjunct professor at West Chester University, teaching very

popular positive psychology courses. Steve has an M.A. in Psychology from West Chester University, an M.Ed. in Performance Psychology from Temple University, and was trained through Mentor Coach. FeelGreatCoaching.com.



With BAYADA Home Health Care...

"I can keep my high school sweetheart safe at home."

— Irv T., Client's husband



www.bayada.com

BAYADA specialty practices include Home Health Care, Pediatrics, Hospice, and Habilitation.

With a broad range of services and a team of professionals who are committed to keeping people of all ages safe at home, BAYADA provides:

- Assistive care and nursing
- Thoroughly screened health care professionals
- Clinical support 24 hours, 7 days
- A variety of payment options

King of Prussia 610-992-9200 | Main Line area 610-658-7150 | Media 610-891-9400 | Newtown Square 610-353-5000

Compassion. Excellence. Reliability.



Explore Everything King of Prussia Has to Offer

- SHOP** at over **500 stores**
- DINE** in more than **60 restaurants**
- STAY** in one of our **2,600 hotel rooms**
- PLAY** at **KOP Beerfest Royale** on 10/3 & 10/5
- SAVE** by joining the **FREE KOPerks Club**

visitKOP.com



KOPerks

VisitKOP.com/KOPerks

TODAY

isn't just another day.
Today I will...



JENNER'S POND
A CONTINUING CARE RETIREMENT COMMUNITY
Affiliated with Simpson Senior Services

Freedom—experience it at a whole new level when you choose retirement living at Jenner's Pond. Here, you can free yourself of the burdens associated with home upkeep and maintenance. Here, nothing is dictated and opportunities for fun, creativity, learning and socializing abound each day. Our friendly staff is always ready to serve you and you can enjoy greater peace of mind knowing health care services will be available, should you ever need them. **Make the most of today. Call to schedule a personal visit.**

2000 Greenbriar Lane • West Grove, PA 19390 • 888.536.6377 • 610.869.6801 • www.jennerspond.org



Good to Know

Just a few things we thought you'd like to know for August



Feel Like a Movie Star.

This Paris-based, professional make up brand, **Make Up For Ever**, opens its fifth U.S. store in the King of Prussia Mall August 1. Called the candy store of make up shops, this boutique offers a one-of-a-kind experience to customers with 1600 easy-to-use and long-lasting products set in what feels like a backstage studio make up station. Be among the first to attend interactive, personalized make up sessions, and use iPads to watch how-to videos and post social media updates. VisitKOP.com/MakeUpForever.



Pup Culture.

Time for a multi-media summer concert experience—with your dog—**Woof Fest at the Mann Center**. This Fido-friendly event brings people and all sorts of dogs together—from movie dogs to rescue dogs and family dogs. Filled with music (“You Ain’t Nothin’ But a Hound Dog”), videos and more, the concert celebrates canine moments from past to present. Maestro Steven Mercurio, The Chamber Orchestra of Philadelphia, conducts a symphony celebrating man’s best friend, *A Grateful Tail*, which includes a guest spot by Academy Award-winner F. Murray Abraham. Come. Sit. Stay. *Aug. 24, 8 p.m. MannCenter.org/events*.

Bug Blitz.

Buzzzz-z-z-z. Swat. Smack. Oh, the irritations of summer’s insects! Ever wonder what’s zipping past you in the dark of night? Join Nick Fuski, a ranger at **Warwick County Park**, from 8 to 9:30 p.m. on August 16th to learn more about what you’re swatting. Look at insects up close, identify different species, and learn about the awesome abilities they have. Parents, this is a great outing for curious children—of all ages. ChesCo.org.



Happy Birthday, Chester County.

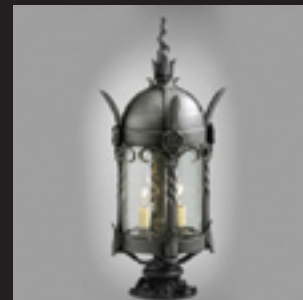
No need for a present, but August 24, 1682 marked the birthdate of **Chester County**. Named for Cheshire, England, by who other than William Penn, Chester County joined Philadelphia and Bucks as the original counties in the new colony. It wasn’t until almost 50 years later that a fourth county, Lancaster, was formed. Some trivia: Chester County’s population is over half a million and it has the highest income in Pennsylvania. We suggest you toast the event in the county seat, West Chester.



Come Hungry.

The wait is finally over! **The Market at Liberty Place** in Kennett Square is officially open. Although you missed the July 12th ribbon cutting, check out the up to a dozen or so vendors in the 10,000-square-foot space. This new market is unlike its outdoor counterpart (the Friday Farmers Market, 2 to 6 p.m.) ... this one is indoors. Beat the heat and come sample cheesesteaks, seafood, wine, coffee, pizza, crepes and more. Definitely worth the wait. *148 W. State St., Kennett Square. TheMarketAtLibertyPlace.com*.





Since 1932, Ball and Ball has set the standard for the finest reproduction and restoration of 18th Century through Victorian Era antique hardware and lighting. Meticulously crafted period house and furniture hardware, fireplace accessories, scones, chandeliers, lanterns and candlesticks are all made on the premises in brass, tin, copper, pewter, hand-forged iron, and bronze.

BALLANDBALL.COM

EXTON, PA

1.800.257.3711

*The hearth is the heart
of the home, we make it
safe and beautiful!*

Chester County Hearth & Home

- Visit our showroom for quality hearth products from Regency, Hampton, Enviro, Piazzetta and others...
- CSIA certified chimney service.
- NFI certified gas fireplace service.
- C-DET certified dryer vent service.
- Come see the new Renaissance Rumsford hi efficiency wood burning fireplace featuring a hideaway Guillotine style screen door and glass panel.

www.chesterchimney.com

19 Park Avenue
Elverson, PA
610-913-0730



of Special Note



Riverfront Blues Festival In Wilmington

August 2-4

Enjoy an outdoor music festival in a great setting, featuring the James Cotton Band, Eric Lindell & The Sunliners, Elvin Bishop, harmonica workshops and many local and regional acts. *Tubman-Garrett Riverfront Park, S. French & Walnut Sts., Wilmington. Fri., 4:30 to 10 p.m.; Sat., 11 a.m. to 10 p.m.; Sun., 11:30 a.m. to 6 p.m. \$30-\$50. 302-576-3095; RiverfrontBluesFest.com.*



Longwood Gardens Fireworks & Fountains

August 17-September 14

Get ready for an evening of oohs and ahhs as Longwood presents spectacular Fireworks & Fountains shows guaranteed to make your summer memorable. **Aug. 17, Sept. 14, Rocket Man: Music of Elton John**, dance to the iconic pop star's biggest hits including "Philadelphia Freedom," "Candle in the Wind," "Rocket Man" and "Saturday Night's Alright for Fighting." *Aug. 17, 9:15 p.m., Sept. 14, 8:15 p.m. Aug. 31, Festive Fireworks: Music of Dmitri Shostakovich*, featuring famous works by the celebrated Russian composer including the joyful "Festival Overture" and "Jazz Suite No 2." *8:15 p.m. 1001 Longwood Rd., Kennett Square. \$22-\$38. 610-388-1000; LongwoodGardens.org.*

Chanticleer: A Pleasure Garden

Through November 3

Escape to one of the most romantic, imaginative and exciting public gardens in the country. Chanticleer is a garden of pleasure and learning, relaxing yet filled with ideas to take home. Take a detour from traffic on Fridays after 5, bring a picnic, sit back, relax and enjoy the beautiful surroundings. 786 Church Rd., Wayne. *Wed. through Sun., 10 a.m. to 5 p.m.; Fri. until 8 p.m. through Labor Day. \$10. 610-687-4163; ChanticleerGarden.org.*



PHOTO: LISA ROPER



Tennis at Radnor Hunt

August 17

Dog's Best Friend (tennis ball) will meet up with Man's Best Friend (service dog) for a great day of tennis at Radnor Hunt to benefit Canine Partners for Life. All levels of play are welcome or come to sit on the deck for refreshments and to watch the game. Cocktails and dinner to follow at Heartwood Farm, home of Esther and Paul Gansky, just adjacent to the Club. *Radnor Hunt Club, 826 Providence Rd., Malvern. 3 to 8 p.m. \$50-\$75. 610-869-4902; K94Life.org.*

70th Annual Ludwig's Corner Horse Show & Country Fair

August 31-September 2

More than 500 horses compete in events at the 33-acre Ludwig's Corner horse show grounds. Also featured, rides and games, carriage exhibition, antique cars, retailers, crafters and children's activities. Benefits open space conservation. *Rt. 100, N of Rt. 401, Ludwig's Corner. 8 to 6. \$3-\$7. 610-458-3344; LudwigsHorseShow.org.*



Best Local Events

Noteworthy in August ...

Wednesdays through August 28
Bike and Hike at Hagley Museum. Wednesday evenings through the summer, visitors are welcome to bike along the Brandywine River, hike around the museum, or enjoy an outdoor evening excursion. Bring a picnic or dine at the Belin House Organic Café. Rt. 141, Wilmington. 5 to 8 pm. 302-658-2400; Hagley.org.



Through September 2
Brandywine Treasure Trail Passport. Valid for one general admission visit at each of the 11 sites including the Brandywine River Museum, Longwood Gardens, Nemours, Delaware Museum of Natural History and more. Visit BrandywineTreasures.org.

August 24
Tyler Arboretum's Butterfly Festival. Say a fond farewell to the monarch butterflies as they are tagged and released for their southern migration. Experts will be on hand with tips on creating butterfly-friendly habitats. Live bug specimens are brought by the Insectarium. Games and make-and-take crafts round out the day. 515 Painter Rd., Media. 10 to 2. \$5-\$9. 610-566-9134; TylerArboretum.org



August 30–September 1
35th Annual Long's Park Art & Craft Festival. Recognized as one of the country's top fine art and craft shows, with 200 juried artisans, a gourmet food court, live music and a kids' tent. Benefits the free Long's Park Summer Music Series. Harrisburg Pk. & Rt. 30, Lancaster. 10 to 5. \$10. 717-735-8883; LongsPark.org.

Antiques Shows

August 22-25
Baltimore Summer Antiques Show. More than 500 international dealers showcase their collections at this enormous show. Baltimore Convention Center, One W. Pratt St., Baltimore. Thurs, 12 to 8; Fri-Sat, 11 to 7; Sun, 11 to 6. \$15. 561-822-5440; BaltimoreSummerAntiques.com.

August 25
Historic New Castle, DE Antiques Show. Nearly 100 dealers offering quality antiques on the Waterfront in Battery Park, W. 3rd St., New Castle. 10 to 4 (rain or shine). \$8. Benefits the Visitor's center. DFShows.com.

August 30–September 1
161st York Antiques Show and Sale. Ninety exhibitors offer 18th- and 19th-cen-

tury American, English, primitive and period furniture and accessories. York Expo Center, 334 Carlisle Ave., York. Fri–Sat, 10 to 6; Sun, 11 to 5. \$10. 302-875-5326; TheOriginalYorkAntiquesShow.com.

Art & Craft Shows

Wednesdays Through September 30
Southern Chester County Sculpture Trail. Enjoy the sculptures of 13 artists along Old Baltimore Pk. from West Grove to Nottingham. Map and listing can be found at OxfordArt.org.

Eat, Drink & Be Merry

Through September 25
Stroll, Shop, Dine—Dining Under the Stars in Media. Wednesday is the night to dine out in Media. Restaurants offer outdoor dining along State Street, from Jackson to Orange Sts. Plus entertainment and children's activities on each block. 5 to 11 pm. 610-566-5039; VisitMediaPA.com.

August 9, September 20
Longwood Gardens 1906 Wine Dinners. Sample fine wines, meet the winemaker and feast on a gourmet four-course meal. **Aug. 9,** California Dreamin'; **Sept. 20,** Autumn Harvest, Paul Hobbs Winery, Sebastopol, CA. 1001 Longwood Rd., Kennett Square. 6. \$115. 610-388-1000; LongwoodGardens.org.

Equestrian Events

Fridays and Sundays, June–September
Brandywine Polo. Spectators can picnic and tailgate at the grounds. On Friday, spend an evening under the stars with live music, polo, regional wines and food. Toughkenamon Exit, Rt. 1 S. Fri, gates open at 5; polo, 5:30; music, 7:30. \$25; Sun, polo at 3, \$10. Cancelled for weather. 610-268-8692; BrandywinePolo.com.

Family Fun

Through October 6
The Franklin Institute Presents—SPY: The Secret World of Espionage. Featuring historical artifacts and the stories they have to tell—a collapsible motorbike, a two-man submersible and a CIA robotic catfish—combined with firsthand spy experiences like disguises, voice alteration and navigating through a field of laser beams—find out what it's truly like to be a spy! Check website for hours. 222 N. 20th St., Philadelphia. \$13-\$28. 215-448-1200; FI.edu.



Through October
Tyler Arboretum Presents "Totally Terrific Treehouses." Come climb, explore and play at Tyler. 515 Painter Rd., Media. Mon-Fri, 9 to 5; Sat-Sun, 9 to 6. \$5-\$9. 610-566-9134; TylerArboretum.org.

August 1
Brandywine River Museum Explorer Morning—Who Am I? Meet adventurous pirates, princesses, soldiers and cowboys in paintings and illustrations, then decorate imaginative hats for favorite characters. Ages 3–10. Rt. 1, Chadds Ford. 10 am or 11 am. \$6-\$12; under 6, free. 610-388-8382; www.BrandywineMuseum.org.

August 3–4, 31
Events at Colonial PA Plantation. **Aug. 3–4,** Living History Timeline—travel through 300 years of American history. 11 to 5, \$8-\$10. **Aug. 31,** Militia Muster (Philadelphia Campaign) and evening concert with The Dill Pickle Old-Time Orchestra. Militia, 11 to 9, concert at 7, \$8-\$12. Ridley Creek State Park, 3900 N. Sandy Flash Dr., Newtown Square. 610-566-1725; ColonialPlantation.org.

August 4
Ice Cream Social at Historic Ephrata Cloister. Bring the family for a cool dip of ice cream on a summer afternoon. 632 W. Main St., Ephrata. 4 to 6. \$3. 717-733-6600; EphrataCloister.org.

August 6–20
For Young Audiences at The Colonial Theatre. **Through Aug. 8,** Phoenixville Library's Thrilling Thursdays—family fun through reading, Thursdays at 10:30 am. Live performances (all 10:30 am, \$8.50): **Aug. 6,** Balloon Freak John Cassidy; **Aug. 13,** Elska; **Aug. 20,** Segal Puppet & Theatre Co. presents *Ropenose*. 227 Bridge St., Phoenixville. 610-917-0223; TheColonialTheatre.com.

August 18
Touch A Truck Day. See different models of cars and trucks—dump trucks, cement mixers, fire trucks, new cars and everything in between. Chester County Gov. Service Complex, 601 Westtown Rd. Noon to 4. \$2 parking. 610-436-9010; West-Chester.com.

Festivals, Fairs & Parades

Through August 3
Goshen Country Fair. An old-fashioned fair with agricultural exhibits, rides and entertainment. Benefits the volunteer Goshen Fire Company. Gates open 6 pm. Fair Grounds, Park Ave., off West Chester Pk., West Chester. 610-430-1554; GoshenCountryFair.org.

August 9–10
46th Annual Goschenhoppen Pennsylvania Dutch Folk Festival. Come enjoy the fun at this

family-friendly event providing an exceptional educational experience for children. Dipping candles, creating a rag doll, petting a calf, sampling potato candy, or rolling a barrel hoop are all sure to bring a smile. Old-fashioned Pennsylvania Dutch foods are for sale on the festival grounds. Henry Antes Plantation, Rt. 73, Perkiomenville. Fri, 12 to 8; Sat, 10 to 6. \$2-\$10. 215-234-8953; Goschenhoppen.org.

In Towns & Burroughs . . .

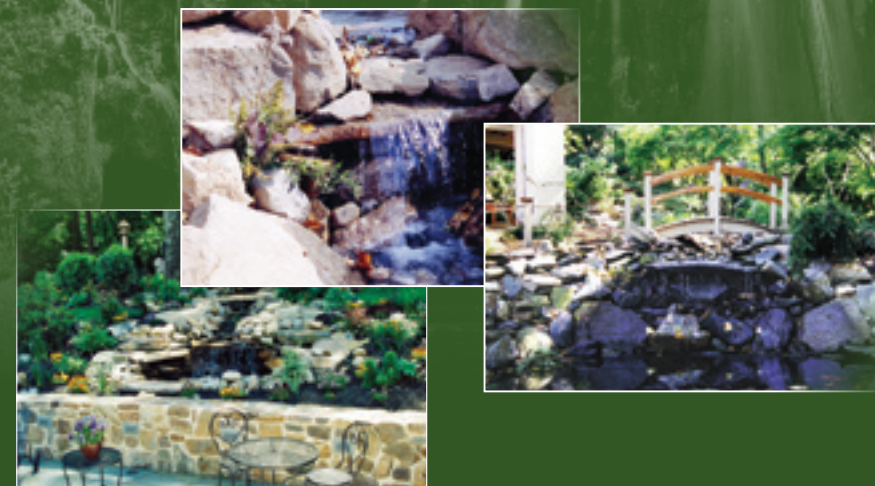
Through August 22
Town Tours and Village Walks. Mark your calendars for the 19th summer of sharing

Chester County's heritage. This series of free summer strolls takes you through the county's historic neighborhoods, hamlets, villages and sites. **Aug. 1,** Nantmeal Village, the "Sweet Water" Meeting on Coventry Road; **Aug. 8,** Soldier-Statesman-Leader: The Legacy of Rich Thomas III (1744–1832); **Aug. 15,** An Inside Glimpse of the Lukens National Historic District; **Aug. 22,** Barn Again in Chester County. Tours begin at 5:30 p.m.; last tour leaves at 7. 610-344-6415; ChesCo.org/CCParks.

August 2
Murder Mystery Art Stroll. Kennett Amateur Theatrical Society (KATS)

FLOWING SPRINGS LANDSCAPE DESIGN, INC.

Let Our Talented Designers Unlock Your Property's Full Potential



Serving the Main Line & Surrounding Areas for 30 Years!

Creative Design | Custom Building | Historic Restoration

- Patios • Walks & Stone Walls • Quality Nursery Stock
- Custom Swimming Pools • Natural Stone Work
- Professional Tree & Shrub Pruning and Care
- Landscape Lighting • Total Property Maintenance

— excellent references —

610.408.0739

Richard T. Burns, Horticultural Designer, Owner

426 Old Conestoga Road • Malvern, PA 19355
 www.flowing springs design.com ~ rtburns426@gmail.com

presents a murder mystery where visitors solve the whodunnit. A family-friendly event. This year's mystery is "The Mystery of the Snowwhite Family Reunion." Genesis Walkway, 101 E. State St. 6:30. 610-444-8188; HistoricKennettSquare.com.

August 2, September 6
West Chester Vintage Garage Sale. Live music, food, wine tastings and vintage home goods, clothing, jewelry, art and more for sale. Chestnut St. Parking Garage, 14 E. Chestnut St. 610-436-9010; AVintageGarageSale.com.

August 2, September 6
First Fridays. Stroll through area towns to

find exhibits, galleries, restaurant specials, entertainment and extended hours. **Berwyn,** 610-203-4543; BerwynDevonBusiness.com. **Kennett Square,** 610-444-8188; HistoricKennettSquare.com. **Lancaster City,** 717-509-ARTS; LancasterArts.com. **A Main Line ARTitude,** 610-642-4040; FirstFridayMainLine.com. **Oxford,** 610-998-9494; DowntownOxfordPA.org. **Phoenixville,** 610-933-3070; PhxFirstFriday.com. **Wayne,** 610-687-7698; FirstFridayWayne.com. **West Chester,** 610-738-3350; DowntownWestChester.com; **Wilmington,** 302-576-2100; ArtLoopWilmingtonDE.com.



6th Anniversary Sale!

August 16-September 2
Everything on Sale!
Extra specials on Floor Models
& Discontinued Items
Not to be combined with other offers.

Amish Made
Hardwood Furniture...
Designed Your Way!



MADE IN USA

Ph: (610) 970-4340
Rt. 100 | Pottstown, PA
Midway between Rt. 422 & Rt. 23
www.alegacyfurniture.com

Local Farm Markets

Bryn Mawr Farmers Mkt., Lancaster Ave. at Bryn Mawr train station. **Through Nov.,** Sat, 9 to 1. BrynMawrFarmersMarket.com.

Coatesville Farmers Mkt., Rts. 30 & 82. **Through Oct. 26,** Sat, 10 to 2. 201-888-8260; Facebook.com/CoatesvilleFarmersMarket.

Collegeville Farmers Mkt., 217 E. Main St. **Through Nov. 23,** Sat, 9 to 1. 610-454-1050; CollegevilleFarmersMarket.org.

Downingtown Farmers Mkt., Kerr Park, Rt. 30. **Year-round,** Thurs, 3 to 7. 610-836-1391; GrowingRootsPartners.com.

East Goshen Farmers Mkt., E. Goshen Park, 1580 Paoli Pk. **Through Nov.,** Thurs, 3 to 7. EastGoshenFarmersMarket.blogspot.com.

Kennett Square Farmers Mkt., downtown. **Through Oct. 25,** Fri, 2 to 6. 610-444-8188; HistoricKennettSquare.com.

Lancaster County Farmers Mkt., 389 W. Lancaster Ave., Wayne. **Year-round,** Wed, Fri, Sat, 6 to 4. 610-688-9856; LancasterCountyFarmersMarket.com.

Malvern Farmers Mkt., Burke Park, Roberts Rd. and S. Warren Ave. **Year-round,** Sat, 9 to 1. 610-836-1391; GrowingRootsPartners.com.

Media Farmers Mkt., State St. b/w Monroe & Gayley. **Through Nov. 14,** Thurs, 3 to 7. 610-566-5039; MediaFarmersMarket.com.

New Garden Grower's Mkt., 8934 Gap Newport Pk. **Through Nov. 23,** Sat, 9 to 1. 610-972-7194.

Newtown Square Farmers Mkt., Mostardi Nursery, 4033 West Chester Pk. **June 5-Oct. 23,** Wed, 2 to 6. 610-353-1555; PRC.org.

Oxford Village Mkt., 3rd & Locust Sts. **Through Oct. 30,** Tues, 12:30 to 6. 610-998-9494; DowntownOxfordPA.org.

Phoenixville Farmers Mkt., 200 Mill St., under Gay St. Bridge. **Through Nov. 23,** Sat, 9 to 1. PhoenixvilleFarmersMarket.org.

Swarthmore Farmers Mkt., 341 Dartmouth Ave., at Swarthmore Co-Op. **Through Oct. 26,** Sat, 10 to 2. FarmToCity.org.

Upper Merion Farmers Mkt., 175 W. Valley Forge Rd. **Through Nov. 23,** Sat, 9 to 1. 610-265-1071; UpperMerionFarmersMarket.org.

West Chester - Artisan Exchange Indoor Artisan Foods & Farmers Mkt., 208 Carter Dr. Sat, 10 to 2. ArtisanExchangeWCPA.com.

West Chester Growers Mkt., Chestnut and Church Sts. **Through Dec.,** Sat, 9 to 1. 610-436-9010; WestChesterGrowersMarket.com.

West Grove Mkt., Harmony Park, Harmony Rd. **Through Oct.,** Thurs, 2 to 6. 610-932-5468; WestGroveFarmersMarket.com.

August 10, September 14
Media's Second Saturdays. Media's version of First Fridays. 610-566-5210; MediaArtsCouncil.org.

August 25
"Dog Days" at Grove United Methodist Church. All dogs are welcome to receive the Blessing of the Animals and a certificate. There will be a memorial service for departed animals and animal craft activities for children. Home-made dog biscuits for participants. Cats are invited as well. Please bring dog or cat food to donate to the Chester County SPCA. 490 W. Boot Rd., West Goshen 610-696-2663.

Museums

Through September 1
The Demuth Museum Exhibit. "Charles Demuth: Gardens and More," a special exhibition focusing on Demuth's watercolors of flowers from his mother's garden, still enjoyed by museum visitors today. 120 E. King St., Lancaster. Tues-Sat, 10 to 4; Sun, 1 to 4. Free. 717-299-9940; Demuth.org.



Through November 17
Brandywine River Museum Exhibits. **Through Sept. 8,** "Creative Spaces: Photographs of Artists' Homes and Studios." **Through Nov. 17,** "Jamie Wyeth, Rockwell Kent and Monhegan," examines the fascination that the island of Monhegan, off the coast of Maine, held for both artists. Rt. 1, Chadds Ford. Daily 9:30 to 4:30. \$6-\$12; under 6, free. 610-388-2700; BrandywineMuseum.org.

Through November 17
Delaware Art Museum Exhibits. **Through Sept. 15,** "French Twist: Masterworks of Photography from Atget to Man Ray," features 100 vintage prints from the golden age of French photography, 1910-1940. 2301 Kentmere Pkwy., Wilmington. Wed-Sat, 10 to 4; Sun, noon to 4. \$6-\$12; under 6, free; Sundays, free. 302-571-9590; DelArt.org.

Ongoing
National Iron & Steel Heritage Museum. View the works of German-born artist, Klaus Guido Grutzka—paintings are on permanent display at NISHM. 50 S. First Ave., Coatesville. Mon-Sat, 10 to 3. \$5. 610-384-9282; LukensNHD.org.

Ongoing
Winterthur Museum, Garden & Library. On view now: "Common Destinations: Maps in the American Experience;" "The Flowering of American Tinware;" "Boston Furniture." 5105

Kennett Pk. (Rt. 52), Winterthur. Tues-Sun, 10 to 5. \$5-\$18. 302-888-4600; Winterthur.org.

Music, Dance & Live Shows

Through August 18
Delaware County Summer Festival. Grab your blankets and chairs and enjoy another summer of performances on the hillside at Rose Tree Park, Rt. 252 & Providence Rd., Upper Providence. **Aug. 1,** Payton Taylor; **Aug. 2,** First Ladies of Rock & Soul; **Aug. 3,** PA Symphonic Winds; **Aug. 4,** The Plants; **Aug. 7,** 22 Park Avenue; **Aug. 8,** Spirit Wing; **Aug. 9,** Separate Ways; **Aug. 10,** Goodfellas; **Aug. 11,** Hot Club of Philadelphia; **Aug. 14,** US Army Field Band and Soldiers Chorus; **Aug. 15,** Blackthorn; **Aug. 16,** Yellow Brick Road: Tribute to Elton John; **Aug. 17,** The Original Orions; **Aug. 18,** Charlie Phillips Band plays Eric Clapton. 7:30. Inclement weather, phone 610-891-4455; Co.Delaware.PA.US/Summer.

Wednesdays, Through August 28
Valley Forge Summer Carillon Concerts. Bring seating, snacks or dinner and enjoy these free concerts at Washington Memorial Chapel, Valley Forge National Historical Park, Rt. 23, Valley Forge. Held rain or shine. 7:30 pm. WMChapel.org.

Dressage at Devon

www.stacylynphoto.com

HERITAGE COMPETITION

CDI DRESSAGE & WORLD CLASS BREED SHOW

September 24 - 29, 2013 • Devon, Pennsylvania

Special Exhibitions with Equine Extremist **Tommie Turvey**

Leadline Class on Sunday
Exquisite Shopping
Fabulous Food

Sponsored in part by: B&D Builders • Brushwood Stables
Barnes & Beck Financial Consulting • Der Dau • Dover Saddlery
Dubarry of Ireland • HorseTech • Hill Cadillac • Iron Spring Farm
Malvern Saddlery • Mid-Atlantic Packaging
Performance Saddlery • The Horse of Course

Visit www.dressageatdevon.org

3 Days of Family Fun!

Antique Car Show Monday!

Labor Day Weekend

70th Annual

LUDWIG'S CORNER HORSE SHOW

and COUNTRY FAIR

A CHESTER COUNTY TRADITION FOR 70 YEARS

Competition for more than 500 equestrians. 33 acres of family fun and entertainment.

Country Fair • Midway • Rides Games • Great Food
35 Local & National Shops
Carriage Exhibition (Sunday)
Thorncroft Mainstreamers
Pickering Hunt Pony Club

Saturday, Sunday, & Monday
August 31- September 2, 2013
Proceeds benefit open space conservation.

(610) 458-3344 or
www.ludwigshorseshow.org

Through August 29
Longwood Gardens Summer Performances. Get your tickets early as the summer lineup includes more than 40 great performances, all in the most beautiful outdoor settings. **Aug. 13,** The Beach Boys; **Aug. 15,** Pat Benatar & Neil Giraldo; **Aug. 22,** Creedence Clearwater Revisited; **Aug. 27,** Tony Bennett; **Aug. 29,** Edward Sharpe and the Magnetic Zeros. 1001 Longwood Rd., Kennett Square. Phone for tickets and information. 610-388-1000; LongwoodGardens.org.



Through September 20
Friday Nights Under the Stars at Brandywine Polo Club. See Equestrian Events.

August 1, September 5
Swingin' Summer Thursdays in Downtown West Chester. The party is on Gay Street with artists, music and family fun. **Aug. 1,**

jazz with Venom Blues and Toney; **Sept. 5,** rock 'n roll/funk with Chaos Thompson and Blue Apple Grove. Gay St. 6:30 to 9:30. Free. 610-436-9010; DowntownWestChester.com.

August 2, 3
Bryn Mawr Twilight Concerts. **Aug. 2,** Ella's Retreat Benefit Concert, \$20; **Aug. 3,** David Wilcox. Bryn Mawr Gazebo, 9 S. Bryn Mawr Ave., Bryn Mawr. 7 pm. \$12 donation. 610-864-4303; BrynMawrTwilightConcerts.com.

August 2-11
Bethlehem Musikfest. A musical extravaganza showcasing nearly every musical style imaginable. Check the website for a complete list of headliners, including Styx, Foreigner, Kesha, Frampton's Guitar Circus, Darius Rucker and more. Great food, children's activities and closing-night fireworks. 610-332-1300; Musikfest.org.

August 4-25
Miller Park Summer Concert Series. **Aug. 4,** The Bulldogs; **Aug. 18,** Janis Nowlan; **Aug. 25,** Chico's Vibe. Albert C. Miller Memorial Park, 220 Miller Way, Exton. 6:30. Rain dates the following Sunday. 610-363-9525; WestWhiteland.org.

August 4-25
Long's Park Summer Music Series. **Aug. 4,** Mountain Heart; **Aug. 11,** Eddie Palmieri; **Aug. 18,** Samba Mapangala; **Aug. 25,** Taj Weekes & Adowa. Long's Park Amphitheater, 1441 Harrisburg Pike at Rt. 30, Lancaster. Sundays, 7:30 pm. Free. 717-735-8883; LongsPark.org.

August 6-27
Eagleview Town Center "Concerts on the Square." **Aug. 6,** Family Night; **Aug. 13,** Philly Folk Fest Preview; **Aug. 20,** Toy Hearts with Baskery; **Aug. 27,** Entrain. 540 Wellington Square, Exton. 7 pm. In case of rain phone 800-851-2779 after 4 pm on day of the show. InEagleview.com.

August 7
Summer Concert at Anson B. Nixon Park. Enjoy a free concert in the park, light supper available. The Spinto Band performs. Walnut Rd., Kennett Square. 7 to 9 pm. AnsonBNixonPark.org.

August 7
Radnor Township Summer Concert. Big Chill performs 60s, 70s and 80s music at Bo Connor Park, 590 S. Devon Ave., Wayne. 6:30 pm. If inclement weather, phone 610-688-5600, ext. 141, between 2 and 4 pm on the day of the scheduled concert. Radnor.com.

August 10
85th Chester County Old Fiddlers' Picnic. Old-time country music with hundreds of musicians and music lovers gathering on stage and in the woodlands of Fiddlers' Field. Kids activities, mansion tours, food and craft vendors. Rain date Aug. 11, 11 to 5. Hibernia County Park, Cedar Knoll Rd., West Caln Township. 10 to 4. \$5 parking fee. 610-383-3812; ChesCo.org/CCParks.

August 10
Kennett Symphony, "Gershwin at the Gardens." Two of Gershwin's masterpieces—one for orchestra (*American in Paris*) and the other his dramatic opera (*Porgy and Bess*). Longwood Gardens Open Air Theatre, 1001 Longwood Rd., Kennett Square. 7:30. \$5-\$40, includes gardens admission. Rain date Aug. 11. 610-444-6363; KennettSymphony.org.

August 11, 25
West Goshen Summer Concerts. **Aug. 11,** country and folk music with Runaway Train; **Aug. 25,** Motown sounds with Loni Gamble and Sound Cheque. West Goshen Comm. Park, N. Five Points and Fern Hill Rds. Rainsite: WC East High School. Dry goods donations for WC Food Cupboard appreciated. 6:30. 610-692-2550; WGGoshen.org.

August 14
Roger Ricker Concert, "Star Power" at Media Theatre. Roger and special guests perform songs that "made the careers" of Broadway stars and recording artists. Media Theatre for the Performing Arts, 104 E. State St., Media. 7:30. \$20. 610-891-0100; MediaTheatre.org.

August 15
Music at Marshall Square Park, West Chester. Lukens Band performs at the gazebo in Marshall Square Park. Check for rain dates. 248 E. Marshall St. 6:30 pm. Free. 610-436-9010; West-Chester.com.

August 23-25
The Brandywine Folk Festival. National and international acts, vendors, beer-gardens and activities for kids. The Festival aims to unite the unique stylings of many musicians, create a family-friendly atmosphere and provide aid for SPARC (Southeastern PA Autism Resource Center). Anson B. Nixon Park, N. Walnut Rd., Kennett Square. \$25-\$75. 484-604-0183; BrandywineFolkFestival.com.

August 24
DuPont Theatre Presents The Tim Conway Show with Louise Duart. The legendary comedian brings his hilarious show to the DuPont with impressionist Louise Duart.

1007 N. Market St., Wilmington. 8 pm. \$52. 800-338-0881; DuPontTheatre.com.

Theater

Through August 4
Noises Off. People's Light & Theatre, 39 Conestoga Rd., Malvern. Wed-Thurs, 7:30; Fri-Sat, 8; Wed, Sun, 2; Sun, 7. \$25-\$45. 610-644-3500; PeoplesLight.org.

August 1-3
Brandywiners, Ltd.—Annie Get Your Gun. Music and lyrics by Irving Berlin. Longwood Gardens Open Air Theatre, Rt. 1, Kennett Square. \$20-\$30 includes garden adm; fountain display after the show. 8:30 pm. 302-478-3355; Brandywiners.org. ♦

Stay in the know with everything going on in *County Lines* country. Sign up for our monthly Events Newsletter at Newsletter@ValleyDel.com.

Send a description of your activity to Info@ValleyDel.com by the first of the month preceding publication.

For more events visit

CountyLinesMagazine.com



BEST KEPT SECRETS TOUR September 20- October 5



A shopping, food & fun adventure featuring 35 local & off-the-beaten path businesses hand-picked for their uniqueness. Organized like a home or garden tour, you'll travel place to place enjoying special events like games & refreshments plus valuable coupons from each business. It's such a fun way to explore & shop Chester County!

Tickets \$8 each
w/ \$1 donated to Chester County 4-H
484.551.5180
ShopChesterCounty.com

TRANSFORM YOUR EXISTING CONCRETE



Decks • Walkways • Patios • Driveways • Pools • Floors
Decorative Overlays • Color Flake Systems • Epoxy Stone
Epoxy Flooring • Acid Staining • Quartz Flooring

229 North Cedar St.
Lititz PA 17543
717.625.7116



MYCUSTOMCOATINGS.COM

CALL TODAY
FOR YOUR FREE
ESTIMATE!

Don't get left in the start box! Join us for the Sensational Sixth Annual Plantation Field International Horse Trials

Vendor Village
Wine Bistro &
Beer Garden
Tailgate Parking
& Competition
Sunday: Live bands!

Sep.
20-22
2013
★ ★ ★

\$20
Carload
General Admission
FREE admission on Friday



PLANTATIONFIELDHORSETRIALS.COM

To benefit:
Cheshire Land Preservation Fund • The Barn at Spring Brook Farm • Chester County Food Bank

Kid's Corner
petting zoo, carnival games
mechanical bull & more!

Carriage Parade &
Antique Car Exhibition

Vendor & Sponsorship
opportunities including
the new Plantation
Platinum Club.
See our website.

Malvern PREPARATORY SCHOOL

An Augustinian School

Preparing Each Boy to Become a Gentleman and a Scholar.

Malvern Preview Mornings for Families

Reservations Required • 8:30 – 10:45 a.m.

October 2 • November 13 • December 12

Open House

Program begins at 8:30 a.m.
Sunday, October 27

Academic Scholarship/Entrance Exams

8:30 a.m. – 12:00 noon

October 19 • October 27

Entrance Exams

8:30 a.m. – 12:00 noon

November 16 • December 14

www.malvernprep.org/Admissions
484-595-1173

*Malvern Prep is an Independent, Augustinian,
Catholic, college preparatory school for boys in grades 6 – 12.*

MARK YOUR CALENDAR

PAOLI BLUES FEST 2013
SATURDAY, OCTOBER 5TH



Left to right: Paoli Blues Fest & Street Fair, Brandywine Valley Wine Trail event, Chester County Day, Ludwig's Corner Horse Show & Country Fair.

SEPTEMBER

Aug. 31–Sept. 2, 70th Annual Ludwig's Corner Horse Show and Country Fair. Equestrians compete in a variety of events. Carriage exhibition, antique cars and country fair. Rt. 100, N of Rt. 401, Ludwig's Corner. 610-458-3344; LudwigsHorseShow.org.

6–8, Glen Willow Combined Driving Event. Combined driving, dressage, equestrian event and trade fair. 685 Woodview Rd., Avondale. 910-691-7735; GlenWillowCDE.com.

6–8, 16th Annual Radnor Hunt Concours d'Elegance. Premier, nationally recognized motor car event. Radnor Hunt, 826 Providence Rd., Malvern. 610-644-4439; RadnorConcours.org.

7–8, 28th Kennett Square Mushroom Festival. Street fair with mushroom-related events. Fun for the whole family. 610-925-3373; MushroomFestival.org.

7–8, 48th Annual Chadds Ford Days. An 18th-century celebration, tours of the John Chads House, vendors, food and an art show. Rt. 100, Chadds Ford. 610-388-7376; ChaddsFordHistory.org.

15, 34th Annual Chester County Restaurant Festival. Over 70 restaurants serve up their best. Gay St., West Chester. Rain date, Sept. 25. 610-436-9010; DowntownWestChester.com.

15, Radnor Fall Festival. A day of food, music and fun for the whole family. N. Wayne Ave., Wayne. 610-688-9188; RadnorFallFestival.com.

15, The Hagley Car Show. More than 500 antique cars, trucks and motorcycles are displayed. Main entrance off Rt. 141, Wilmington. 10 to 4. 302-658-2400; Hagley.org.

20–22, Plantation Field Horse Trials. Top international riders compete in a mix of dressage, cross country and show jumping. 387 Green Valley Rd., Unionville. 484-883-2917; PlantationFieldHorseTrials.com.

28, 11th Annual Community Arts Center's Arts & Crafts Show. Held once again on the streets of Media and offering even more festivities. State Street, Media. 10 to 5. Visit-MediaPA.com.

24–29, Dressage at Devon. Top horses and riders from around the world compete. Festival Shops. Devon Horse Show Grounds, Rt. 30, Devon. 610-517-0849; DressageAtDevon.org.

25–Nov. 3, Media Theatre Presents Monty Python's Spamalot. Media Theatre opens its season with a Tony Award-winning musical. 104 E. State St., Media. 610-891-0100; MediaTheatre.org.

28–29, Oct. 5–6, Brandywine Valley Wine Trail's 11th Annual Harvest Festival. Local vineyards and wineries invite you to enjoy picnicking, live music, hayrides, wine tastings, tours. BVWineTrail.com.

OCTOBER

4–Nov. 3, Oxford Arts Alliance Decorator Showhouse. Discover the artistry of the area's best interior decorators and landscape professionals in this stunning showhouse. Benefits several nonprofits; OxfordArt.org.

5, 16th Annual Kennett Square Brewfest. Over 60 microbrewers from across the region offer samples. Food from local restaurants adds to the fun. 600 S. Broad St. 610-444-8188; KennettBrewFest.com

5, 73rd Annual Chester County Day Tour. Fine homes and historic landmarks in the northwestern quadrant of Chester County are on this year's tour. Benefits Chester County Hospital. 610-431-5301; CCHosp.com.



West Chester Rotary Chili Cookoff



Plantation Field Horse Trials



The Great Pumpkin Event
Chadds Ford Hist. Society

5, Paoli Blues Fest & Street Fair. Musicians perform on the Main Stage at Paoli Village Shops. Fun for the whole family with vendors, a beer garden and a Kidz Zone. Rt. 30, Paoli. PaoliBluesFest.com.

6, 33rd Annual Media Food & Crafts Festival. Local restaurants are showcased and quality artisans and craftspeople display on State St. Also, live music, entertainment, children's activities. 610-566-5039; VisitMediaPA.com.

10, Devon Horse Show and Country Fair Fall Festival of Homes. Enjoy distinctive private residences, a vendor boutique and lunch. Benefits Bryn Mawr Hospital. 610-525-2533; TheDevonHorseShow.net.

13, 11th Annual West Chester Rotary Chili Cookoff. Teams compete for awards like the "People's Choice" and the "Best Darn Chili in Chester County." Sample as many as you like and cast your vote. 610-353-4610; WestChesterChiliCookoff.com.

24–26, The Great Pumpkin Event. Over sixty carvers participate in this traditional community pumpkin carve and show. Chadds Ford Historical Society, Rt. 100 N., Chadds Ford. 610-388-7376; ChaddsFordHistory.org.

29–Nov. 3, DuPont Theatre Presents The Addams Family: A Musical Comedy. A weird and wonderful show just in time for Halloween. 1007 N. Market St., Wilmington. 800-338-0881; DuPontTheatre.com.

NOVEMBER

2–3, Reading-Berks Guild of Craftsmen Holiday Show. Fine traditional and contemporary crafts by juried artisans. Kutztown University, O'Pake Fieldhouse, 312 Trexler Ave. 610-678-6650; RBCrafts.org.

3, 79th Running of the PA Hunt Cup. Enjoy a day in the country featuring great timber racing, tailgating, carriage parade. Benefits the Chester County Food Bank. Rt. 926 & Newark Rd. Unionville. 484-888-6619; PAHuntCup.org.

7, Notable Kitchen Tour & Chef Showcase. Annual fundraising event benefiting the Philadelphia Orchestra. NotableKitchens.com.

8–10, 50th Annual Delaware Antiques Show. Premier event featuring more than 60 fine antiques dealers. Benefitting Winterthur's programs. Chase Center, Wilmington. 800-448-3883; Winterthur.org.

20–Jan. 12, People's Light & Theatre's Cinderella: A Musical Panto. This classic fairy tale is transformed into a hilarious and heartfelt event—a treat for the whole family. 39 Conestoga Rd., Malvern. 610-647-1900; PeoplesLight.org.

16, Jazz By Night Celebration in Media. The music reverberates up and down State Street—traditional, classic and genuine Jazz from Bebop to Avant-Garde to NuJazz. 610-566-5039; StateStreetBlues.com.

16–17, Main Line Antiques Show. The only antiques show on the Main Line is held in the Radnor Country Club, featuring 30 top dealers. Benefits Surrey Services for Seniors. MainLineAntiquesShow.com. ♦





Fred de Long, Director of Willistown Conservation Trust's Community Farm Program

Bible stories and French paintings are not the only examples of the ancient practice of gleaning. See what's happening at Rushton Farm in Willistown Township.

Few places in this country are blessed with the rich farming legacy of Chester County. A drive through our countryside will take you to small farms dotted on rolling hills with rich, fertile fields that produce a bountiful harvest of fruits and vegetables for our community.

Unfortunately not everyone is able to buy our local produce at farmers markets, CSAs and supermarkets. But through the Share the Bounty Program at Rushton Farm, part of Willistown Conservation Trust's Community Farm Program, wider access is available.

The Share the Bounty Program was established to demonstrate how small farms can make a big difference by donating part of their harvest to local food shelters. Starting with its first growing season in 2008, Rushton Farm has donated at least 10% of all food harvested to those in need. The farm does this in three ways: donating extra produce, growing specifically for donation, and gleaning.

Modern Gleaning

Gleaning is the act of collecting leftover crops from farmers' fields after the crops have been harvested and donating them to those less fortunate. Over the course of the growing season, the produce left in the field can be a substantial amount. With volunteers providing the labor, local gleaning programs provide a valuable method for getting fresh produce to local food banks.

Gleaning in Chester County has grown significantly over the last decade thanks to small farms like Pete's Produce Farm, which grows crops and dedicates fields specifically for gleaning. Rushton Farm looked to these programs in developing gleaning initiatives.

Several times a year Rushton Farm invites volunteers to come to the farm to help gather leftover crops. On these harvest days volunteers gather, ready to pull from the vines and from the soil nutritious food that would otherwise be left to compost. The work takes only a few hours but the rewards are long-lasting. You'll



The Gleaners, Jean-Francois Millet

find there's nothing quite as gratifying as picking nutritious food alongside friends and family, knowing it will go to those who truly need it.

Planning a gleaning day is difficult because organizers can't readily predict when a crop will be ready to be gleaned. Typically volunteers are notified through Rushton Farm's online newsletter, *The Wild Carrot*, about a week before harvest.

On the gleaning day, volunteers gather at the farm in the morning to learn about the gleaning to be done, where the food will go and how to harvest. Volunteers are then sent into the designated fields with harvest crates for the fresh produce. Some work in pairs or family groups, while others prefer solitary work in the beautiful fields.

Tomatoes and beans are the most commonly gleaned crops but potatoes, peas and root vegetables can be on the pick list as well. It all depends on the time of the season—what's ripe and ready for this second harvest.

After the food is harvested, it's taken to the wash area to be cleaned, sorted and packed for donation. Volunteers take it to the West Chester Food Cupboard or the Chester County Food Bank, another satisfying part of the process. There, it's weighed and stored to be distributed to community members, adding a tasty and nutritious supplement to their meals.

Banking on Henry's Garden

Success of the gleaning program inspired the creation of a garden solely dedicated to providing food for the Chester County Food Bank. In 2012 Henry's Garden was established in memory of Henry Jordan, whose commitment to addressing issues of poverty and access to nutritious food brought him to the Advisory Board of the Chester County Food Bank.

Henry's Garden is designed to be a smaller version of Rushton Farm, a model for demonstrating how sustainable agriculture can work with surrounding natural resources,

promote community involvement, and provide food to those in need. Community members, school groups and volunteers come to Rushton Farm to learn how even a backyard garden can supply hundreds of pounds of fresh, chemical-free, local produce, yielding nutritional and educational benefits to the community. All food from Henry's Garden is grown and harvested by volunteers, then donated to a food bank.

The Bounty

In the five years since Rushton Farm was established, over ten thousand pounds of food have been donated to area food banks through the Share the Bounty Program. Hundreds of volunteers have helped make this possible and each year more volunteers become involved.

What a great way to learn about land protection, sustainable agriculture, and the value of food donation! Come, join in. ♦

Rushton Farm is open to the public seven days a week. Wednesdays are volunteer days, when anyone can work on the farm. Willistown Conservation Trust, a land conservation organization working to protect the agricultural lands of Chester County, expanded its mission to include a Community Farm Program. For information, WCTrust.org or RushtonWildCarrot.wordpress.com.

The Farmhouse and Bistro
at People's Light & Theatre

Contact Betsy Iovino for more information
610.647.1631 x156
iovino@peopleslight.org
www.farmhousepeopleslight.com

coming soon....
to Malvern!
Visit our Facebook page for updates!

Your Locally Owned Independent Source for Local & Organic Groceries

Local & Organic Produce • Gluten Free Foods
Natural Bodycare • Specialty Cheeses
Supplements • Raw Milk

www.KimbertonWholeFoods.com



Borough of Malvern ^{est.} 1889

A Perfect Mix

Malvern is a mix of the past and the present and worth a visit in the near future.

Jaimielynn Cooper

Between its bigger neighbors of Paoli and Exton, lies the welcoming Chester County town of Malvern. With its town center off the bustle of Lancaster Avenue, Malvern is home to a charming combination of residential and commercial districts. And like many towns in our area, it offers a unique experience to residents and visitors alike. Even more, Malvern is a reminder that big things can be found in small places.

Taking a Step Back

While Malvern's walkable main street may be short, its history is long. Founded in the 17th century and initially named West Chester Intersection, Malvern was renamed after the Malvern Hills in Wales. Some say that's because the borough sits on high ground.

History buffs will want to visit the 44-acre **Paoli Battlefield Site and Parade Grounds**, site of the Paoli Massacre and the country's most pristine preserved Revolutionary War battlefield. (Note: Although the battle was indeed fought in Malvern, Paoli Tavern was a nearby landmark that lent its name to the event.) In 1777, American soldiers led by General Anthony Wayne were brutally massacred by British forces. A monument was erected at the site to commemorate the 272 American casualties, and "Remember Paoli" became a rallying cry during the war.

Nearly a century later, Malvern had transformed from a battlefield to an elegant mid-century American town, complete with a bustling business center, gracious Victorian homes, and neighborhoods interspersed with wide-open spaces.

The distinctive features of Malvern's past remain today, from the Victorian houses that still line Monument Avenue—many restored to reflect their original façades—to the authentic street lamps and the brick pavers, most in their original places along King Street. There you'll also find the landmark, **The National Bank of Malvern**, which has been open for business on the corner of King Street and Warren Avenue since April 1887.

In many ways, Malvern remains an intersection between the past and the present.

Stop In and Shop a While

From small businesses, like the quaint boutiques along King Street, to multi-nationals like Siemens and Vanguard, both headquartered here, to community mainstays like **Malvern Federal Savings Bank** (established 1887) and **Malvern Prep** (moved here in 1842), the borough of Malvern boasts a unique blend of businesses.

For first-time visitors, head for walkable King Street, where you'll find sophisticated selections in a small town setting satisfying tastes from trendy to traditional to antiques.

On West King, stop at **Nota Bene Boutique**, a small shop offering a unique selection of clothing and accessories. And visit **Gingy's Home & Fashion Décor**, located on the first floor of the Historic Malvern Inn, chock



PHOTO: COURTESY OF MALVERN FARMERS MARKET

full of clothing and accessories, as well as stylish items for the home. A few blocks to the east is **Posh Collections**, a boutique dedicated to outfitting today's woman with glamour and elegance.

For fashionable men, **Englund's** has offered custom suits and personalized service since 1964, with a wide selection of suits, shirts and more "made to measure."

Malvern shops can help you outfit your home as well as your wardrobe. Stop in a Main Line landmark (over 60 years), **Sheffield Furniture**, for upscale, classic styles in furniture, and you'll find the largest Stickley Furniture dealer in the world. If you're looking for hardware and giftware, check out **Wolfe's Baldwin Brass Center** for handcrafted pieces and reproduction accessories.

The **Eclectic Market** offers a wide range of options, including vintage, antique, collectible and quirky pieces. **Knots & Weaves** has an extensive collection of Oriental and decorative rugs and imported home accessories. And for contemporary and unique vintage pieces, including antiques, linens and more, **UpHome** is a browser's dream destination.

Eat In or Head Out

Don't worry about working up an appetite during your town tour and borough walk. Malvern offers eateries for every taste, from of-the-moment sustainable cooking to dinner at a historic inn.

If you're still on King Street, well-known **Restaurant Alba** promises contemporary cuisine made with locally grown, seasonal ingredients and cooked over a state-of-the-art wood-burning grill. Enjoy a glass of wine with you meal, from Alba's wine list, which focuses on small production, biodynamic and organic wineries.

If you're outside town in the Great Valley Corporate Center, stop for lunch at **Twenty9**, where the restaurant offers modern dining on the main floor, a sports bar on the lower level, and an outdoor deck for good weather. For authentic Italian food along Lancaster Avenue, visit **Ristorante Verona**, where the menu mixes family classics and contemporary entrées.

You don't have to go home and you can stay here—if you're at the **General Warren Inne**, that is. The historic Inne is a perfect blend of old-world charm, American cuisine and authentically restored 18th-century accommodations. For more blending of past and present,

check out their Paoli Battlefield lectures series and dinner events, starting September 9. Wine, dine and spend the night, for there's more to see and do.

For cooking at home, stock up on Saturdays, 9 to 1 p.m. in Burke Park, where the **Malvern Farmer's Market** offers the best in local produce, meats, poultry, eggs, baked goods and more. Later this summer look for the organic grocer, **Kimberton Whole Foods**, opening on King Street. Stop in the cozy café for a quiet moment, a cold drink and a hot meal.

Return for Malvern's Events

Malvern's active community offers a diverse calendar of events all year long celebrating the town and its heritage, another mix of old and new.

Boasting the title of America's oldest continuing celebration, in June the town is home to the **Malvern Memorial Parade and Family Fun Day**. The day-long event, which celebrated its 145th anniversary this year, is a swirl of color and commotion, complete with military bands, antique vehicles and much more.



11-TIME AWARD WINNER 2013 Best Community Bank

We're the neighbors you've banked on since 1887 — offering all the convenient banking products you expect, as well as the local lending decisions and personal service you deserve.



A Rewarding Banking Experience.™



www.malvernfederal.com





SPROUTS
CONSIGNMENT BOUTIQUE

GRAND OPENING
Saturday August 3rd

Upscale casual to career clothing for moms-to-be & an even bigger selection for babies and toddlers.

Now accepting maternity clothes & children's clothes, newborn to size 8 in good condition and freshly laundered.

Attention Local Crafters:
Bring in your speciality items for children!
No appointment necessary—stop in today and visit with Cyndi

484.318.8605
Tuesday – Saturday 10am – 6pm
288 Lancaster Ave. Malvern, PA 19355



nota bene boutique
something special for you and others



Nota Bene Boutique
117 W. King Street
Malvern, PA 19355
610.644.5016
notabeneboutique.com

In September, Malvern hosts its annual **Fall Family Festival** and **Bark in the Park**. The autumn event, held in Burke Park, is family—and furry—friendly. Over 150 artists, local businesses, live entertainers and vendors will join local animal rescues and pet-related vendors.

Also in September, there's **The Great Colonial Festival and Fine Craft Fair** at St. Peter's in the Great Valley. The one-day festival celebrates colonial heritage and offers a glimpse into the past, complete with Colonial singing and dancing, blacksmithing, wood crafting and much more. Fall days full of family fun.

In December, the town transforms and reflects its Victorian roots during **Malvern Victorian Christmas**. The holiday celebration, sponsored by **Malvern Federal Savings Bank**, features a tree lighting, carolers in period garb, and horse-drawn carriages all centered on King Street, and draws crowds from around the county. If you haven't been, and even if you have, mark it on your calendar this year.

Looking for other reasons to return? See a show at **People's Light & Theatre**, on Conestoga Road, visit the little-known gem, **Wharton Eshrick Museum**, near Valley Forge Park, or shop along Lancaster Avenue at new stores like **Sprouts**, a consignment boutique for maternity and children's clothes, or take your prize pooch to **Linda's Doggie Stylin'** for a spa day.

Visit for the shopping, stop for a meal, or join one Malvern's many themed events, and be sure you make plenty of memories to bring home when you do. ♦

Malvern Trivia

Think you know Malvern? Test your knowledge with some history and local trivia. Check your answers and see more questions online at CountyLinesMagazine.com.

1. What famous songwriter is buried in Malvern?
Bonus question: What was the songwriter's hit song?
2. The infamous date of the Battle of Paoli is _____.
3. Malvern's Memorial Day Parade is tied as the longest continuing parade in the country. When was the first parade held?
4. Held annually, the Radnor Hunt Races are also known as _____ and benefit what nonprofit group?



Full-Service Grooming

Treat your dog to the best

Make Your Appointment Today

484-320-8619

Or Text Us

610-209-6935

From Puppies to Older Dogs

We Groom Dogs of all Ages and Breeds

Visit us today!

228 Lancaster Ave. Malvern, PA 19355



FINE RUG CLEANING & RESTORATION

190 Pennsylvania Ave. • Malvern • www.arasrug.com
610.644.2700

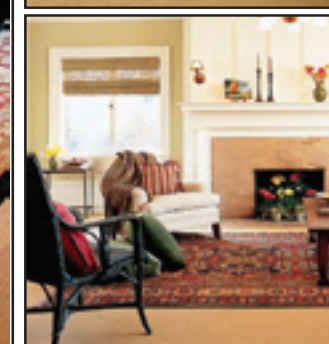
Plant on Premises Fully Bonded & Insured

Cleaning & Repairing Oriental & Area Rugs for over 35 years

Free Pickup & Delivery



Fall Special
20% OFF
Cash & Carry



10% OFF
In-Plant
Rug Cleaning

Not valid with other offers or prior work.
Exp 10/15/13

\$99.95

In-Home Carpet Cleaning

up to 300 sq. ft

Wall To Wall, Upholstery & Drapery
Cleaning, Tile & Grout

Not valid with other offers or prior work. Exp 10/15/13

Shop Aras For Designer Carpet At Warehouse Prices • Free Estimates For Hardwood Floor Refinishing

For Advertising Information Call 610-331-7060 or Visit NeighborSaver.net for OnLine Coupons 8/13



HOPE
Veterinary Specialists

Providing 24-hour emergency and critical care 7 days a week.
 **610.296.2099**



Where the hopes for tomorrow reside today.
Specialty Services:

Cardiology	Internal Medicine
Critical Care	Interventional Radiology
Dermatology	Neurology
Diagnostic Imaging	Oncology
Emergency	Surgery

40 Three Tun Rd, Malvern PA 19355 | www.hopevs.com

One Stop Shopping For All Your Decorative Hardware Needs
Like Jewelry For Your Home!

We invite you to visit our showroom to see our extensive displays from high quality manufacturers.
Rocky Mountain ~ Emtek ~ Baldwin ~ Top Knobs ~ Schaub ~ Linnea ~ and much more!

Symphony cabinet hardware by Schaub...works of art featuring the lost wax technique creating a solid brass product of incredible detail and ornate design. Some items feature precious inlays of mother of pearl, tiger penshell, and jade.



Wine Bottle Pull \$189.00



Dragonfly Pull \$89.00



Wolfe's
Baldwin Brass Center
101 East King Street
Malvern, PA 19355
610-408-8533

www.wolfebrass.com

The Very Best Dog

Emily Hart

Photos by Katherine Azar Photography

The very best dog for your family could be a collie, a terrier...
or a cat, duck or bearded dragon.

Chris Feryo knows the strength of a bond between four-footed and two-footed friends. A few years ago when Chris broke his leg in his backyard, Daisy—the family’s border collie—relentlessly pursued help until Chris was taken care of. “It was like a rescue scene from ‘Lassie,’” he joked, referencing the classic television series about a heroic collie and her human and animal companions.

Feryo, a long-time pet owner and former SPCA volunteer, understands the love that abounds when a dog enters a home. He also knows it takes advance, careful thought.

His advice, consider these factors before seeking a pet:

- Lifestyle, including the amount of time and energy you want to spend.
- The age and temperament of all animals and people involved.
- Space, including nearby pet-friendly areas for playing.
- Allergies.
- Budget.

Match your family members' time, energy, interests and personalities to the needs and temperament of a pet, Feryo continued. Energetic border collie puppies need exercise, so owners

must work with them. If lounging together on the couch is your style, a senior dog from a rescue center might be a better choice. Mixed-breeds' temperaments may fit a household with children. As for space, "a Great Dane in a small apartment may not make a great match." Whether dealing with a shelter or breeder, "Everyone wants a high success rate matching pets and people," Feryo concluded.

Care and Costs

Rocky Hill Veterinary Clinic's veterinarian Terry McGrath, known for his gifted rapport with all creatures, concurs: choosing to add a loved one to the family is a decision that should not be taken lightly. Before heading to the shelter or breeder, determine whether your finances can accommodate the level of healthcare and safety you would grant other family members: things like health bills, property fencing and microchip IDs in case of loss.

Medical costs can run into the thousands of dollars for a dog—vaccines, preventative treatments and neutering during a puppy's first several months. (Prices depend on the exact procedures, the dog's size, anatomy and physiology.) Illnesses or emergency visits



Border collies need exercise but are great with kids.



Consider a rescue dog when choosing a pet, like Dudley, here, the rock-solid bulldog.

can run from hundreds to thousands of dollars, depending on the severity and treatment needed. Procedures such as stem cell transfer, acupuncture and hydrotherapy—available at the West Chester Veterinary Med Center—can add other line items to your budget, above routine costs.

When considering finances, remember to include one-time initial costs for a pet and the pet's home—aquarium or barn, litter box or dog bed—and recurring costs beyond vet bills—food, grooming, boarding and training. A shelter adoption fee might be a few hundred dollars but might include early vaccines and neutering.

Depending on a dog's size and cuisine preferences—gourmet or something more basic—food can cost several hundred dollars per year. Boarding or pet sitting can average a couple hundred dollars per week, depending on the level of luxury or simplicity. Expect to pay more for royal pampering at resorts or for special services.

The number of classes and costs for dog training depend on the individual dog, family and their environment. Pets in Motion, at The Pet Village of Wayne, offers a range of classes from Puppy Head Start programs, to obedience classes, and

K9 Nose Work courses (follow your nose training and fun). Ultimately, training is about socializing dogs to become good community citizens and to have fun, according to Anne Holiday, Pets in Motion founder and owner.

When the Best Dog is a Cat or a Duck

Sometimes the very best pet is not a dog, but a cat, a bird or a reptile.

When it comes to adopting four-footed friends—or two-footed, or foot-free!—Kim Brosnan-Myers is game. Her family farm near London Grove is home





Looking for cuddly? Try a golden doodle like Charlie.



Can't decide between a dog or cat? Penelope was a rescue cat, who now thinks she's a dog.



Rendition is a very big pet, so gentle that Michele says he'd crawl into her lap if he could.



Express yourself through your pet: The well-coiffed Dolce usually has her nails painted, often with glitter.



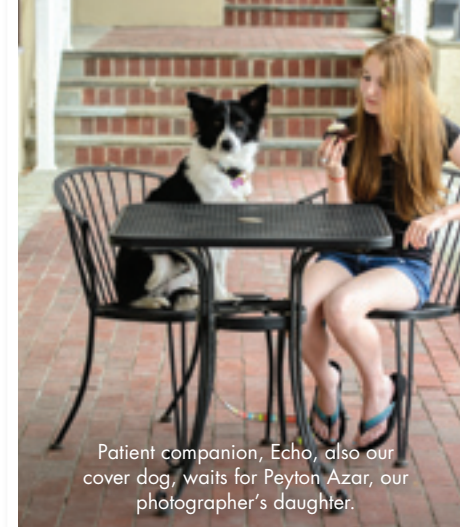
This white fluff-of-a-dog has the serious name of Drexel.



Easy to see who is top dog here.



Goats make great pets. Those at Springton Manor Farm in Glenmoore get lots of visitors of all ages.



Patient companion, Echo, also our cover dog, waits for Peyton Azar, our photographer's daughter.

to ducks, cats, a snake, a guinea pig, black and white "Oreo" cows, a cockateel named Lucy that likes to snuggle up to a plush peacock puppet, and a bearded dragon named Fluffy—a large lizard cherished by children for its calm, friendly nature, ease of care and exotic good looks.

This menagerie has a critter for Kim's every mood—snuggly, playful and more. She also attests to the fact that different pets work better in different households. Fluffy, for example, is quiet, demands little space for his habitat, and watches television from Lucy's shoulder at the end of her busy day.

Pet supply stores are often a source of great information, as well as provisions, when getting a pet. The Radnor Dog Club and Radnor Vet, in The Pet Village of Wayne, offer a free online pet-matching service. The easy-to use tool (RadnorVet.com/pet_selector/index.html) assesses your preferences for canines or felines, hot or cold climates and other factors, and provides photos of pet types that might suit your lifestyle.

Chad Barone, store manager at Braxton's in Wayne, which sells supplies for dogs, cats, wild birds and small animals, offers advice when purchasing a pet: "Go with your gut—have a good feeling about the people who are giving or selling you an animal." Their straightforward information about the animal and any papers about breeding and trustworthiness are vital.

Braxton's blog provides connections for fostering military personnel's pets during deployment, and ways to let humans know that your timid dog needs personal space during training or after surgery (Braxtons.com/braxtons-blog/). Its website also lists resources—trainers for well-mannered pooches, professionals for pet sitting, and more.

Fido's and Fifi's Fabulous Road Trips: Vacationing With Your Pet

When choosing a pet, consider how much time you travel and if your furry family member must "staycation" with a sitter, visit a kennel, or vacation with you. For some families, a getaway isn't complete without Fido or Fifi.

Daisy, the border collie, successfully accompanied the Feryo family to Canada, and Spencer the cat has enjoyed trips to nearby states. While Daisy loved swimming, hiking and sitting at outdoor cafés in Toronto, Spencer particularly enjoyed observing city sights in Pittsburgh from large hotel windows. A highlight of one vacation was staying at a Sheraton that provided a doggie guest bed, food bowl and doggie gift bag with a water bottle and bowl, plus poop disposal bags.

Feryo's tips for traveling with pets:

- Reserve rooms at pet-friendly hotels before leaving home. Remember, although hotels might allow animals in the room, pets might not be allowed to remain alone when owners are out.
- Secure pets in a crate or harness and seatbelt in the car so they can't roam and to protect them from accidents.
- Watch for signs of carsickness, especially with cats. Some herbal remedies may help Fifi feel better.
- Plan plenty of food and potty breaks. Allow extra time. Never leave pets in a hot vehicle.
- Keep pets safe and healthy. Keep them on a leash in unfamiliar territory. Carry vaccine records and your vet's contact information on the trip.

Pet Hotel

When a trip to Paris or Katmandu can't accommodate pets, you'll need a clean, caring home-away-from-home, such as swanky Wagsworth Manor on six acres in Malvern, or quaint and homey Applebrook Bed and Biscuit in Oxford, a vet-owned and operated facility for boarding, grooming and daycare. While you're vacationing at a luxurious spa far away, your pooch can have its nails painted and a facial scrub at a spa nearby designed for her.

The results of careful consideration and the right match are priceless: companionship, unconditional love, and a wagging tail, a chirpy greeting or a purr that can launch a thousand smiles. ♦

Doggy Days of Summer

Artist Sam Mylin gets nose to nose with his clients, literally. That's because he's an animal caricaturist. Referring to himself as Dr. Doolittle, Mylin draws other people's dogs as well as his own, Liddy Jane Mylin. "She sells more paintings than me! And she's more creative than me!" says Mylin. "The best dogs to draw are the little ones because they already look like cartoons," he continues, remembering a tiny dog that looked like a mop.

Mylin started doing dog caricatures five years ago when he'd go to local events and just draw people's dogs. Though he rarely keeps the drawings, he enjoys giving them to the dog owners. At one event Mylin drew a picture of a huge Great Dane, its jowls drooping as he sketched. Afterward Mylin gave the picture to a little kid, whose smile was as big as the dog!

Adding proof that people tend to look like their dogs, Mylin says that he's drawn countless caricatures of owners and their dog-doppelgängers. He notes that people who are tall and skinny tend to show up with dogs that are ... tall and skinny, and those who are short and squat often have a bulldog on a leash.

People not only look like their dogs but treat their dogs as though they're people. Often after Mylin has given his drawing to the owners, they'll hold it up to show it to their dog ... as if the dog were an art critic with an opinion.

"Dogs enjoy art," says Sam, "and the Delaware Museum of Art is a great place to take your dog because it's so pet-friendly." You can catch Mylin drawing dogs at the **Doggy Days of Summer**, August 16 from 6 to 8 p.m., when the Museum invites furry, four-legged guests.

"Doggonest doggiest place in Delaware," says Mylin.

More info:

DelArt.org/doggy_days_summer





The CP Welde Group
Tax and Wealth Advisors



Charles Welde, CPA, CFP®
President

The CP Welde Group serves as a solutions provider for all aspects of our clients' finances. What does this mean? We provide a unique combination of tax savings and wealth preservation strategies. By working with a select group of individuals and businesses, we ensure that we thoroughly attend to our clients' specific needs. What sets us apart from the crowd is our two-step, client-centered philosophy. **First:** We set aside our products and strategies and take the time to really listen. **Second:** We listen some more.

330 Kennett Pike (Rt. 52), Suite 201
Chadds Ford, PA 19317
610.388.7705

charles@cpweldegroupp.com
www.cpweldegroupp.com



610-436-8161 • fax: 610-436-8110
129 East Gay St. • West Chester
www.GiuseppeKitchenAndBathDesign.com

Granite Special!
\$38⁹⁹ sq. ft.
Call for Details!

10% off
any tile
purchase
contractor
discounts
offered

Full Service Shop-at-Home Design Center. Please Contact our Expert Design Team.



Marble/Granite/Quartz Countertops • Variety Of Tiles For Backsplashes, Floors & Bathrooms
In-House Design Team • Cabinets • Installation

**MARTIN'S
CHAIR**

A Living Tradition of Craftsmanship

FALL SHOP AND STAY SALE 2013

★ Featuring Local B&B Discounts, Food and Prizes ★

Sept 19-21
Thurs and Fri 9-5, Sat 10-4

25% OFF All Martin's Furniture and Upholstered Furniture orders

"Must Go" Pricing in our Outlet

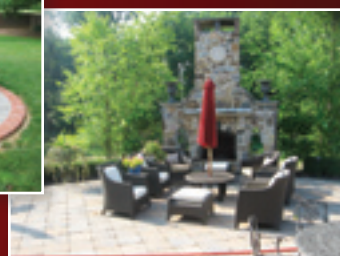
www.martinschair.com

124 King Court, New Holland, PA 17557

717-355-2177

like us on Facebook

**Dutchie's
Stone Works, LLC**



- Patios
- Outdoor Living Spaces
- Fireplaces
- Historic Restoration
- Custom Homes
- Additions
- Retaining Walls
- Pool Decks

Stone • Brick • Block • Pointing

Dave Fisher • 717-587-8789
www.dutchiesstoneworks.com

Call of the Wild: Eastern Coyotes in Pennsylvania

Kirsten L. Werner, Natural Lands Trust

Once associated with prairies and mountains of the western U.S., coyotes are now living alongside us.

Eastern coyotes, weighing between 35 and 55 pounds and wolflike in appearance, are sometimes mistaken for dogs when spotted. Though hard to spot, markings that can help distinguish them from dogs include yellow eyes, black lines running up and down the front legs, and a low-hanging tail.

It's dusk. The sun has dipped below the horizon and the sky is the color of the pinkish-purple echinacea that dot the meadows. Fred Gender, who manages and lives on the 571-acres of Stroud Preserve, is sitting down to supper when he hears the now-familiar sound: a high-pitched keening followed by staccato gruff barks ... the unmistakable call of a coyote.

"It's both beautiful and spooky at the same time," Gender says. "It's a reminder of how much is going on out there in nature after we humans turn off the lights and go to bed."

Popular culture is full of myths about these wild animals, but the fact is that coyotes—once associated only with prairies and mountains of the western U.S.—are now living alongside us in every state.

Here, There and Everywhere

Eastern coyotes (*Canis latrans* "var") have been documented in Pennsylvania since the 1930s. How they got here—or if they were here all along—is the missing link in the story. Some biologists believe coyotes have always been part of Pennsylvania's wildlife community. Others believe western coyotes migrated north to Canada, bred with gray wolves, and the resulting hybrid species moved south to New England and New York, then to Pennsylvania.

The eastern expansion of the coyote may have resulted from the elimination of its ancient foe—the timber wolf—and growing populations of white-tailed deer, a source of food. "Aristotle once said, 'Nature abhors a vacuum,'" offered Tim Burris, Natural Lands Trust's wildlife management coordinator and preserve manager of Mariton Wildlife Sanctuary. "If there's a gap in the ecosystem, sooner or later something's going to fill it."

What we do know is that coyote populations have been increasing steadily in recent decades and now outnumber those of black bear, bobcat and river otter. Their range has expanded as well. Once

limited to rural northern parts of the state, coyotes are becoming as common in Pennsylvania's suburbs as raccoons, skunks and groundhogs and are believed to be present in every township.

Heard But Not Seen

Despite their robust populations, coyotes are not often spotted. This secretive canine prefers the cover of darkness—unlike its western counterpart—when there are fewer encounters with people. Keen observers may notice coyote's scat or tracks.

More frequently, coyotes make their presence known with vocalizations, used primarily to stake out territory and communicate with the pack. In *God's Dog: The North American Coyote*, naturalist Hope Ryden described an adult coyote teaching her pups how to howl: the adult singing at a certain octave, the pups trying to mimic, the lesson being repeated over and over. At least 11 different vocalizations have been documented, including woofs, barks, yips, growls, yelps, lone howls, group howls, greeting songs and group yip-howls.

"I do get calls from neighbors of the preserve from time to time," said Gender. "They hear the howls and want to know what the heck is making those eerie sounds. Some folks get a little nervous when I tell them there are coyotes here. But most of them are more curious than fearful ... the people, that is, not the coyotes!"

Fast Food

Coyotes are predatory opportunists: they'll eat almost anything and prefer to use no more effort than necessary. A good percentage of their diet is made up of mice, voles and other rodents. During summer and fall, they'll feed on berries, insects, field corn and even acorns. In winter, coyotes rely more heavily on carrion—often deer struck and killed by vehicles.

In times of greater need—like when feeding their young—they’ll go to greater lengths, entering barnyards and backyards, parks and parking lots, in their quest for food. They’ll rummage through garbage and eat food left out for pets. Coyotes can and will kill healthy deer. Though still relatively uncommon, they also prey on cats and small dogs.

The eastern coyote is Pennsylvania’s largest predatory animal, second only to the black bear. Yet there’s been only one recorded attack on a human in more than 30 years, suggesting coyotes prefer to avoid people. “They’re in the backyard, and people don’t know it,” state wildlife conservation officer Jerry Czech told the *Philadelphia Inquirer*. “But people have to understand, these animals don’t hide behind rocks waiting for little Johnny to come out on the playground. ... They don’t eat people.”

Losing Ground

Suburban sprawl has affected all native wildlife. As habitats are developed and taken over by humans, many species struggle to survive, some even become extinct. Others,

the eastern coyote among them, have found ways to adapt and even thrive.

As coyote numbers have increased, the Pennsylvania Game Commission has liberalized hunting regulations. Currently, coyotes can be hunted year-round with few exceptions, and there are no limits to the size or number that hunters may kill.

What happens next with our coyotes is unclear. But if Pennsylvania follows trends in neighboring states, we may be seeing—and hearing—more of coyotes.

“This kind of intersection between people and wildlife is just another reminder of how the work of Natural Lands Trust and other conservation organizations is essential ... to people *and* wildlife,” said Molly Morrison, NLT president. “Saving land means saving habitat. Our ongoing care of these diverse habitats on our 41 nature preserves helps ensure ecological balance and harmony.” ♦

Natural Lands Trust is the region’s largest land conservation organization, preserving open space in eastern Pennsylvania and southern New Jersey. Find details about nature preserves open to the public, upcoming events, ways to support Natural Lands Trust, and more online at NatLands.org.

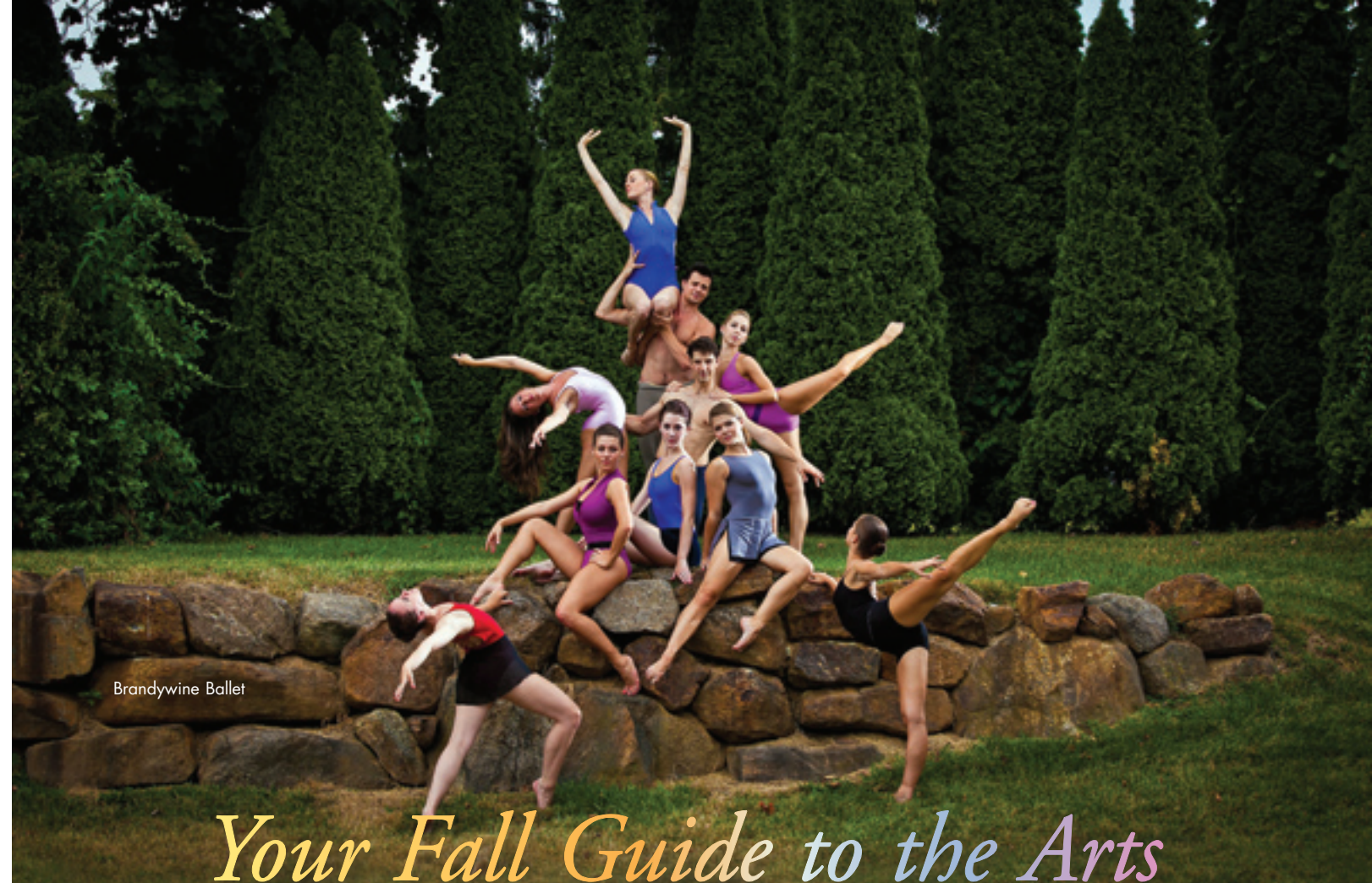
Close Encounters of the Wild Kind

As humans continue to encroach on undeveloped areas, coyotes aren’t the only native species that adapted to living near us.

White-tailed Deer: About 115,000 collisions are caused by white-tailed deer in our state each year. These herbivores are also responsible for \$90 million in crop damage. The impact of deer overpopulation on woodlands—and consequences for other native plants and animals—is incalculable.

Little Brown Bat: Pennsylvania’s most common bat, the little brown bat is the only major predator of night-flying insects. It has adapted to human alteration of the landscape by using man-made structures to roost.

Eastern Bluebird: Once as common as robins, Eastern Bluebirds thrived when our countryside held small fields of hay, oats, pastures and orchards. Now, development has reduced available nesting sites, and their populations plummeted. But programs introducing man-made nest boxes, which bluebirds will readily use, is bringing them back.



Brandywine Ballet

Your Fall Guide to the Arts

The arts are alive in *County Lines* country! From rousing theatrical acts, to legendary musicians, to one-of-a-kind exhibits in local museums. Our guide will help you find your favorites. Here are some season highlights we’re most excited about.

Monty Python’s *Spamalot* starts off the 2013-14 season at Media Theatre with a laugh. Through the unlikely tale of King Arthur and his Knights of the Round Table, this hilarious musical, based on the film *Monty Python and the Holy Grail*, teaches us to “Always Look on the Bright Side of Life.”

For the holidays, join People’s Light & Theatre for *Cinderella: A Musical Panto* and delight in this new twist on an old classic. The interactive performance with audience participation takes on the classic children’s fairy tale with familiar songs and characters, sure to delight theater-goers of all ages and make a lasting bippity-boppity impression.

The beloved score by Leonard Bernstein and Stephen Sondheim takes center stage at the DuPont Theatre in *West Side Story*. Follow the iconic story of star-crossed lovers Tony and Maria in the production that changed musical theater forever.

Brandywine Ballet opens its season with *Grace & Guitars*, a show in two acts: George Balanchine’s classic *Serenade*, a landmark of American classical dance, and a rock ballet, with live music from Downingtown’s School of Rock. A perennial highlight of the holiday season is the Ballet’s *Nutcracker* performances. Get your tickets early!

Get a glimpse inside the home of Georgia O’Keeffe. See the studio where Grant Wood worked. Better understand the personalities and creativity of 38 artists of the 19th- and 20th-century through Brandywine River Museum’s extraordinary exhibit, “Creative Spaces: Photographs of Artists’ Homes and Studios.” For a more personal experience, the Museum offers tours of Andrew Wyeth’s studio through the fall and N.C. Wyeth’s home year-round.

For arts and theater updates, visit our website, CountyLinesMagazine.com, sign up for our events newsletter, at Newsletter@ValleyDel.com, and find us on Facebook for chances to win tickets to performances all year long.

We hope you enjoy the enchantment of the arts this season!

YOU’RE INVITED TO PA CYBER’S
OPEN HOUSE

SAT., AUG. 10, 10 a.m. - 2 p.m.
MON., AUG. 19, 10 a.m. - 2 p.m.

Philadelphia Support Center
1553 Chester Pike, Suite 103
Crum Lynne, PA

Please join us to see why more students choose
PA Cyber than any other cyber charter school in
Pennsylvania.

- Learn more about programs and activities available at our satellite offices and support centers.
- See our comprehensive, standards-based curriculum, including our Virtual Classroom and self-paced options.
- Meet our experienced, certified faculty and staff.
- Review the innovative technology and support services available tuition-free to students in grades K-12.

PACYBER
The Pennsylvania Cyber Charter School

1.888.PACYBER
PACYBER.ORG

INNOVATIVE. ACCREDITED. EXPERIENCED.

HONORING THE CREATIVE SPIRIT WITHIN
FAIRVILLE FRIENDS SCHOOL
QUAKER VALUES SINCE 1973

PRESCHOOL & KINDERGARTEN

SMALL CLASS SIZE
OUTDOOR LEARNING
QUAKER VALUES
ORGANIC FOOD PROGRAM
LUNCH & SNACKS PROVIDED
FULL DAY KINDERGARTEN

CHADDS FORD, PA
ENROLLING NOW!
FAIRVILLEFRIENDS.ORG



Philadelphia Orchestra



Brandywine Baroque



Music School of Delaware
Music Masters Concert Series

**THEATERS & VENUES OFFERING MUSIC,
DANCE & THEATER PERFORMANCES**

Suburban PA Counties

American Music Theatre

2425 Lincoln Hwy E., Lancaster
717-397-7700; AmericanMusicTheatre.com
**Frankie Valli & The Four Seasons*

Chester Co. Historical Society Cultural Ctr.

225 N. High St., West Chester
610-692-4800; ChesterCoHistorical.org

The Colonial Theatre/Point Entertainment

227 Bridge St., Phoenixville
610-917-1228; TheColonialTheatre.com
610-642-0292; PointEntertainment.com
**Eddie Holman*

Daylesford Abbey

220 S. Valley Rd., Paoli
610-647-2530; Daylesford.org
**Cabaret Dinner Theatre from Forge Theatre*

Immaculata University

Alumnae Hall Theatre, Immaculata
610-647-4400; Immaculata.edu

Kennett Flash

102 Sycamore Alley, Kennett Square
484-732-8295; KennettFlash.org
Note: Closing for renovations. Check website.

Keswick Theatre of Performing Arts

291 N. Keswick Ave., Glenside
215-572-7650; KeswickTheatre.com
**Rock N' Blues Fest, Steve Hackett of Genesis*

Longwood Gardens Performing Arts

1001 Longwood Rd., Kennett Square
610-388-1000; LongwoodGardens.org
**Creedance Clearwater Revisited, Tony Bennett,
Pat Benatar & Neil Giraldo, Peter Dinklage &
Noel Paul Stookey of Peter, Paul & Mary*

Mt. Hope Estate & Winery

Rt. 72, Cornwall. 717-665-7021; PARenFaire.com

Neumann University, Meagher Theatre

1 Neumann Dr., Aston
610-558-5626; Neumann.edu
**Sweeney Todd: The Demon Barber of Fleet Street,
Cabaret Dinner*

Reading Civic Theatre

126 N. 10th St., Reading
610-375-7482; ReadingCivic.org

The Rock School

1510 Paoli Pk., West Chester
610-431-4321; TheRockSchool.org/West

Sight & Sound Theatres

300 Hartman Bridge Rd., Strasburg

800-377-1277; Sight-Sound.com

**Noah The Musical*

Sovereign Performing Arts Center

136 N. 6th St., Reading
610-898-7469; SovereignCenter.com
**American Idol Live Tour, Elvis Lives!*

Sunnybrook Ballroom

50 Sunnybrook Rd., Pottstown
484-624-5186; SunnybrookBallroom.net
**The British Invasion Tribute, Dough Church -
The True Voice of Elvis*

Swarthmore College

Lang Performing Arts Center
500 College Ave., Swarthmore
610-328-8149; Swarthmore.edu/Theater.xml

Villanova Univ., Music & Theatre Dept.

Vasey Hall, Villanova
610-519-7474; Villanova.edu/ArtSci/Theatre
**Red Herring, Everyman*

West Chester Univ. Dept. of Theatre & Dance

E.O. Bull Center, West Chester. 610-436-3463
WCUPA.edu/CVPA/TheatreDance
**Endgame, Godspell, Poetics of Space*

Delaware

Christina Cultural Arts Center

705 N. Market St., Wilmington
302-652-0101; CCACDE.org

Grand Opera House

818 N. Market St., Wilmington
302-658-5577; GrandOpera.org
**TOTO, Gordon Lightfoot, Graham Nash
Ukulele Orchestra of Great Britain, Bonnie Raitt*

The Music School of Delaware

4101 Washington St., Wilmington
302-762-1132; WilmingtonMusic.org

Theatre N at Nemours

11th & Tatnall Sts., Nemours Building, Wilmington
302-576-2135; TheatreN.org
**High-definition film concert series*

World Café Live at The Queen

500 N. Market St., Wilmington
302-994-1400; Queen.WorldCafeLive.com
**They Might Be Giants, Universal Funk Order,
Rickie Lee Jones, Delaware Irish Fest*

Philadelphia

The Academy of Music

Broad & Locust Sts.
215-893-1999; AcademyOfMusic.org
**Once, Disney's Beauty & The Beast, Nabucco,
Jewels, Flashdance The Musical, The Nutcracker*

Annenberg Center for the Performing Arts

3680 Walnut St. 215-898-6701; PennPresents.org
**Shujaat Khan, The Pearlman Sisters, Gary Burton,
Paul Taylor Dance Co.*

The Curtis Institute of Music

18th & Locust Sts. 215-893-7902; Curtis.edu

Kimmel Center for the Performing Arts

300 S. Broad St. 215-893-1999; KimmelCenter.org

**Ina Garten – the Barefoot Contessa, Diana Krall*

The Mann Center for Performing Arts

5201 Parkside Ave. 215-878-0400; MannCenter.org

**Pet Shop Boys, Black Crowes, Arctic Monkeys,
Vampire Weekend, Steely Dan*

School of Rock

421 N. 7th St., The Electric Factory
267-639-4007; Philadelphia.SchoolOfRock.com

Theatre of the Living Arts

334 South St. 215-922-1011; TLAPhilly.com

Univ. of Penn Zellerbach Theatre

3680 Walnut St. 215-898-6791; PennPresents.org

World Café Live

3025 Walnut St. 215-222-1400
Philly.WorldCafeLive.com
**Nick Lowe, Modern English, Catharsis, Start
Making Sense: Talking Heads Tribute*

EVENTS & SERIES

Suburban PA Counties

Anson Nixon Park Concert Series, June–Aug. 7

Waterworks Dr., Kennett Square
610-444-1416; AnsonBNixonPark.org

Brandywine Folk Festival, Aug. 23–25

Anson B. Nixon Park, Waterworks Dr.
Kennett Square; BrandywineFolkFestival.com

Brandywine Valley Wine Trail, Year Round

610-444-3842; BVWineTrail.com

Long's Park Music Series, Summer Series

1441 Harrisburg Pk., Rt. 30, Lancaster
717-735-8883; LongsPark.org

Longwood Gardens Concert Series, Year Round

1001 Longwood Rd., Kennett Square
610-388-1000; LongwoodGardens.org
***The Beach Boys, Creedence Clearwater*

Main Line Jazz and Food Festival, June

N. Wayne Ave., Wayne
484-416-0473; MainLineJazz.com

Media Jazz by Night, Nov. 16

610-566-5039; StateStreetBlues.com

Media State Street Blues Stroll, June

610-566-5039; StateStreetBlues.com
**Bootsie Barnes Quartet, Larry McKenna Trio*

Musikfest, through Aug. 11

25 W. Third St., Ste. 300, Bethlehem
610-332-1300; Musikfest.org
**Frampton's Guitar Circus, Styx and Foreigner*

Chester Cty 85th Old Fiddlers Picnic, Aug. 10

Hibernia County Park, Wagontown
610-383-3812; ChesCo.org/CCParks

Paoli Blues Fest & Street Fair, Oct. 5

41 Paoli Plaza; PaoliBluesFest.com

PA Renaissance Faire, Aug. 3–Oct. 22

Mt. Hope Estate & Winery, Rt. 72, Cornwall
717-665-7021; PARenFaire.com

Philadelphia Folk Festival, Aug. 15–18

Old Pool Farm, 1323 Salford Station Rd.
Schwenksville. 610-287-7818; PFS.org
**Otis Taylor, Todd Rundgren*

Rose Tree Summer Festival, June–Aug. 18

Rose Tree Park, Rt. 252, Media
610-891-4455; Co.Delaware.PA.US/Summer

Turks Head Music Festival, July

Everhart Park, W. Miner St., West Chester
610-436-9010; TurksheadFestival.com

West Chester Swingin' Summer Thursdays

June, July, Aug. 1, Sept. 15
Gay St., West Chester
610-436-9010; DowntownWestChester.com
**Venom Blues, TONEY Chaos Thompson*

Riverfront Blues Fest, Aug. 2–4

Tubman-Garrett Riverfront Park
80 Rosa Parks Dr., Wilmington
302-425-4890; InWilmingtonDE.com
**James Cotton Band, Elvin Bishop*

PERFORMANCE GROUPS

Suburban PA Counties

Brandywine Ballet

317 Westtown Rd., Ste. 5, West Chester
610-696-2711; BrandywineBallet.com
**Grace & Guitars, Beauty & the Beast,
The Nutcracker*

Brandywine Singers

TheBrandywineSingers.org
**An English Christmas, Ralph Vaughan Williams,
Howells, Britten; Ralph Vaughan Williams, "Dona
Nobis Pacem," AaronCopeland, "In the Beginning"*

Chester County Ballet Company

321 S. High St., West Chester
HarrisonDanceStudios.com

Chester County Choral Society

West Chester
610-516-1130; ChesterCountyChoralSociety.org

Chester County Pops Orchestra

P.O. Box 2468; West Chester
610-701-5701; ChesCoPops.org

Delaware County Symphony

Neumann College, Meagher Theatre, Life Center
Concord Rd., Aston. 610-879-7059; DCSMusic.org

Gilbert & Sullivan Society of Chester Co.

P.O. Box 195, West Chester
610-269-5499; GSSChesco.org
**Trial By Jury, Patience*

Immaculata Symphony

1145 King Rd., Immaculata
610-647-4400; ImmaculataSymphony.org
**Fall Concert, Christmas Concert*

Kennett Symphony

106 W. State St., Kennett Square
610-444-6363; KennettSymphony.org
**Gershwin at the Gardens, Opening Night Con-
cert: Kodaly's Intermezzo, Grieg's Piano Concerto
in A Minor, Holiday Concert: The Nutcracker
and Polar Express*

Lancaster Symphony Orchestra

226 N. Arch St., Lancaster
717-291-6440; LancasterSymphony.org
**Bates Plays Tchaikovsky*

Main Line Symphony Orchestra

VF Middle School, 105 W. Walker Rd., Wayne
610-688-0235; MLSO.org

Opera Lancaster

42 N. Prince St., Suite M-05, Lancaster
717-872-3811; OperaLancaster.com
**The Mighty Casey, Lemonade Concert Series*

Pottstown Symphony Orchestra

1848 Unionville Rd., Pottstown
610-327-3614; PottstownSymphony.org

Reading Symphony Orchestra

136 N. 6th St., Reading
610-373-7557; ReadingSymphony.com
**Bravo Broadway!, David Kim & Jonathan Carney*

Rose Tree Pops Orchestra

P. O. Box 932, Media
610-459-2312; RoseTreePops.org

Rose Valley Chorus and Orchestra

Strath Haven Middle School, S. Providence Rd.,
Wallingford. 610-565-5010; RVCO.org

Serafin Quartet

1014 Sweet Cherry Ct., Wilmington
302-593-8447; SerafinQuartet.org

Swarthmore Ballet Theatre

118 Park Ave., Swarthmore
610-544-8228; SwarthmoreBalletTheatre.com

Valley Forge Choir of Men and Boys

518 Kimberton Rd., Phoenixville
484-868-0883; VFBoysChoir.org

Vox Ama Deus

P. O. Box 203, Gladwyne
610-688-2800; VoxAmadeus.org
**Grand Mozart, Antonio Di Venezia, Bach
Brandenburg, Handel Messiah, Renaissance Noël,
Gershwin Blue, Renaissance Candlemas*

Delaware

Brandywine Baroque

The Barn at Flintwoods
205 Center Meeting Rd., Wilmington
877-594-4546; BrandywineBaroque.org

Choral Ensemble & DE Women's Chorus

4101 Washington St., Wilmington
302-762-1132; MusicSchoolOfDelaware.org

Chorus of the Brandywine

410 Upper Snuff Mill Row, Yorklyn
302-655-SING; ChorusOfTheBrandywine.com

Delaware Symphony Orchestra

P.O. Box 1870, Wilmington
302-656-7442; DelawareSymphony.org

First State Ballet Theater

818 N. Market St., 2nd fl., Wilmington
302-658-7897; FirstStateBallet.com

Mélanie

200 S. Madison St., Wilmington
302-764-6338; Melomanie.org

OperaDelaware

4 S. Poplar St., Wilmington
302-658-8063, 800-374-7263; OperaDE.org
**The Life and Music of Maria Callas,
Opera Undressed. The Elixir of Love*

Philadelphia

Concerto Soloists Chamber Orchestra

1520 Locust St., Suite 500
215-545-5451; ChamberOrchestra.org

Opera Company of Philadelphia

1420 Locust St., Ste. 210
215-893-3600; OperaPhila.org
**Nabucco, Dialogues of the Carmelites, Ainadamar,
Don Giovanni*

Pennsylvania Ballet Association

1819 JFK Blvd., Ste. 210
215-893-1999; PABallet.org
**Jewels*

Philadelphia Boys Choir & Chorale

1336 Spring Garden St.
215-222-3500; PhillyBoysChoir.org



Kennett Symphony Orchestra at Longwood Gardens

Philadelphia Chamber Music Society

1528 Walnut St., Suite 301
215-569-8080; PCMSConcerts.org

Philadelphia Dance Company,

“Philadanco” – 9 N. Preston St.
215-387-8200; PhilaDanCo.org

The Philadelphia Orchestra

1 S. Broad St. 215-893-1999; PhilOrch.org
**Beethoven’s 9th Symphony, Yo-Yo Ma, Fantasia*

The Philadelphia Singers

1211 Chestnut St.
215-751-9494; PhiladelphiaSingers.org

THEATER – PROFESSIONAL Suburban PA Counties

Act II Playhouse

56 East Butler Ave., Ambler
215-654-0200; Act2Playhouse.org

Bucks County Playhouse

70 S. Main St., New Hope
215-862-2121; BucksCountyPlayhouse.com

The Center Theatre

208 DeKalb St., Norristown
610-279-1013; ArtsCC.org

Commonwealth Classic Theatre Co.

610-202-7878; CommonwealthClassicTheatre.org

Fulton Theatre Productions

12 N. Prince St., Lancaster
717-397-7425; TheFulton.org
**Dreamgirls, Singin’ in the Rain*

Hedgerow Theatre

64 Rose Valley Rd., Media
610-565-4211; HedgerowTheatre.org
**Run For Your Wife, Corpse*

Media Theatre

104 E. State St., Media
610-891-0100; MediaTheatre.org

**Monty Python’s Spamlot, Joseph and the Amazing Technicolor Dreamcoat, Diary of Anne Frank, Why Do Fools Fall In Love? Sunset Boulevard*

People’s Light & Theatre

39 Conestoga Rd., Malvern
610-644-3500; PeoplesLight.org

**The Rainmaker, The Devil’s Music: The Life and Blues of Bessie Smith, Cinderella: A Musical Panto, Ghosts, Pride & Prejudice, Dear Elizabeth*

Theatre Horizon

401 DeKalb St., Norristown
610-283-2230; TheatreHorizon.org
**I Am My Own Wife*

Delaware

City Theater Company

4 S. Poplar St., Wilmington
302-220-8285; City-Theater.org

Delaware Theatre Company

200 Water St., Wilmington
302-594-1100; DelawareTheatre.org
**The Male Intellect: An Oxymoron? Ain’t Misbehavin’: The Fats Waller Musical Show*

DuPont Theatre

1007 N. Market St., Wilmington
800-338-0881; DupontTheatre.com
**Cirkopolis, The Addams Family, West Side Story, Dancing with the Movies, Man of La Mancha*

The New Candlelight Theatre

2208 Millers Rd., Ardentown
302-475-2313; NCTStage.org
**A Chorus Line*

Philadelphia

Forrest Theatre

1114 Walnut St.
215-923-1515; Forrest-Theatre.com
**Catch Me If You Can, Sister Act, Jersey Boys, We Will Rock You, The Gershwins’ Porgy and Bess*

Merriam Theater

250 S. Broad St. 215-893-1999; KimmelCenter.org
**I Love Lucy: Live On Stage*

Philadelphia Theatre Company

480 S. Broad St. 215-985-0420
PhiladelphiaTheatreCompany.org
**4000 Miles, Nerds, Tribes*

Prince Music Theater

1412 Chestnut St.
215-972-1000; PrinceMusicTheater.org

Walnut Street Theatre

825 Walnut St.
215-574-3550; WalnutStreetTheatre.org
**Elf, Other Desert Cities, In the Heights, Arsenic and Old Lace*

Wilma Theater

265 S. Broad St. 215-893-9456; WilmaTheater.org
**The Convert, Cherokee*

THEATER – COMMUNITY Suburban PA Counties

Barley Sheaf Players

810 N. Whitford Rd., Lionville
610-363-7075; BarleySheaf.org
**Boeing Boeing*

Barnstormers Theatre

Ward & Tome Sts., Ridley Park
610-461-9969; BarnstormersTheater.com

Center Stage Productions

Fred P. Meagher Theater, 1 Neuman Dr., Aston
610-558-5626; Members.DCA.net/CenterStage
**Little Shop of Horrors*

Footlighters Theater

58 Main Ave., Berwyn
610-296-9245; FootlightersTheater.com
**Rabbit Hole, Jekyll & Hyde*

Forge Theatre

241 First Ave., Phoenixville
610-935-1920; ForgeTheatre.org
**The 39 Steps, Putting It Together*

Montgomery Theater

124 Main St. (Rt. 113), Souderton
215-723-9984; MontgomeryTheater.org

Narberth Community Theatre

P.O. Box 223, Narberth
610-352-4823; NarberthCommunityTheatre.org
**Nunsense, All Shook Up*



WCU Live! Tamagawa University Taiko Drummers

The Players Club of Swarthmore

614 Fairview Ave., Swarthmore
610-328-4271; PCSTheatre.org
**Avenue Q, Singin’ in the Rain*

Delaware

The Ardensingers

2126 The Highway, Arden
484-319-2350; Ardensingers.com

Brandywiners, Ltd.

P.O. Box 248, Montchanin
302-478-3355; Brandywiners.org
**Annie Get Your Gun*

Delaware Children’s Theatre

1014 Delaware Ave., Wilmington
302-655-1014; DEChildrensTheatre.org

Wilmington Drama League

10 W. Lea Blvd., Wilmington
302-764-1172; WilmingtonDramaLeague.org
**Steel Magnolias, Miracle on 34th Street*

Philadelphia

Plays & Players

1714 Delancey Pl.
215-735-0630; PlaysandPlayers.org
**The Disappearing Quarterback, Marcus; Or the Secret of Sweet, The Disappearing Quarterback*

The Savoy Company

215-735-7161; Savoy.org

Stagecrafters

8130 Germantown Ave.
215-247-8881; TheStageCrafters.org

MUSEUMS

Suburban PA Counties

Brandywine River Museum

1 Hoffman’s Mill Rd., Chadds Ford
610-388-2700; BrandywineMuseum.org
**Jamie Wyeth, Rockwell Kent and Monbegan, Creative Spaces: Photographs of Artists’ Homes and Studios, A Brandywine Christmas*

Berman Museum of Art

Ursinus College, 601 E. Main St., Collegeville
610-409-3500; Ursinus.edu/Berman

The Wharton Esherick Museum

1520 Horseshoe Trail, Malvern
610-644-5822; WhartonEsherickMuseum.org
Tours by reservation only
***Imprint,” High School Woodcut Print Competition*

Mercer & Fonthill Museums

84 S. Pine St., Doylestown
215-345-0210; MercerMuseum.org

James A. Michener Art Museum

138 S. Pine St., Doylestown
215-340-9800; MichenerMuseum.org

Swarthmore College List Gallery

500 College Ave., Swarthmore
610-328-7811; Swarthmore.edu

Villanova University Art Gallery

800 Lancaster Ave., Villanova
610-519-4612; ArtGallery.Villanova.edu

Widener University Art Gallery

One University Place, Chester
610-499-1189; Widener.edu

Philadelphia

Barnes Foundation

2025 Benjamin Franklin Pkwy.
215-278-7000; BarnesFoundation.org

Pennsylvania Academy of Fine Arts

118 N. Broad St. 215-972-7600; PAFA.org

Philadelphia Museum of Art

26th St. & Ben. Franklin Pkwy.
215-763-8100; PhilaMuseum.org
**Witness: The Art of Jerry Pinkney, Design for the Modern Child, Family Portrait, The Enchanted World of German Romantic Prints*

Delaware

Delaware Art Museum

2301 Kentmere Pkwy., Wilmington
302-571-9590; DelArt.org
**French Twist: Masterworks of Photography from Atget to Man Ray, Imagined Places: The Art of Alexi Natchev, Fernfolio, American Moderns, 1910–1960: From O’Keeffe to Rockwell*

DE Center for the Contemporary Arts

200 S. Madison St., Wilmington
302-656-6466; TheDCCA.org

Delaware Division of the Arts

Mezzanine Gallery, Carvel State Office Bldg.
820 French St., Wilmington
302-577-8278; ArtsDel.org
**Monocartoon*

Univ. of Delaware Old College Gallery

18 E. Main St., University of Delaware, Newark
302-831-8037; UDel.edu

Winterthur Museum, Garden & Library

5105 Kennett Pk., Winterthur
302-888-4600; Winterthur.org
**Common Destinations: Maps in the American Experience, The Flowering of American Tinware, A Bird’s-Eye View, The Look of Love: Eye Miniatures from the Skier Collection*



DuPont Theatre, Memphis

People’s Light & Theatre
Cinderella: A Musical Panto



The Brandywine Singers



Vox Ama Deus

ART CENTERS

Suburban PA Counties

Chester County Art Association
100 N. Bradford Ave., West Chester
610-696-5600; ChesterCountyArts.org

Chester Springs Studio
1685 Art School Rd., Chester Springs
610-827-7414; YellowSprings.org
**The Lure of the Springs*

Community Arts Center
414 Plush Mill Rd., Wallingford
610-566-1713; CommunityArtsCenter.org

Darlington Fine Arts Center
977 Shavertown Rd., Garnet Valley
610-358-3632; DarlingtonArts.org
**Coffee House Series, Master Class Series*

Goggleworks Center for the Arts
140 N. 3rd St., Reading
610-374-4600; Goggleworks.org

Main Line Art Center
746 Panmure Rd., Haverford
610-525-0272; MainLineArt.org
**Spring Hills Farm Painting Workshop*

Wayne Art Center
413 Maplewood Ave., Wayne
610-688-3553; WayneArt.org
**Craft Forms 2013*

Delaware

Center for the Creative Arts
410 Upper Snuff Mill Row, Yorklyn
302-239-2434; CCArts.org

Christina Cultural Arts Center
705 N. Market St., Wilmington
302-652-0101; CCACDE.org

Delaware Foundation for the Visual Arts
Box 298, Rockland Rd., Rockland
302-475-8796; DFVA.org

ART EVENTS

Suburban PA Counties

Annual Berks County Art Show, Oct. 4-14
1041 Reading Ave., Boyertown
610-367-0076; GreshvilleAntiques.com

Bryn Mawr Rehab Hospital's Art Ability
Nov. 3, 2013-Jan. 26, 2014
414 Paoli Pk., Malvern
484-596-5607; MainLineHealth.org

Community Arts Center Fine Arts & Crafts Festival, Sept. 28
State St., Media
610-566-1713; CommunityArtsCenter.org
**Michael P. Rocco Retrospective*

Long's Park Art & Craft Festival
Aug. 30-Sept. 1
Harrisburg Pk. & Rt. 30, Lancaster
717-735-8883; LongsPark.org

Delaware

Artisans Show, Nov. 8-10
410 Upper Snuff Mill Row, Yorklyn
302-239-2434; CCArts.org

Brandywine Festival of the Arts, Sept. 7-8
1001 N. Park Dr., Wilmington
302-690-5555; BrandywineArts.com

Plein Air Brandywine Valley, Oct. 25-27
PleinAirBrandywineValley.org ♦

Passing the Baton

After 25 years under the leadership of Mary Woodmansee Green, The Kennett Symphony will be welcoming a new conductor and musical director. Ending a seven-month process evaluating over 100 applicants, the Search Committee narrowed down the finalists to succeed Green to three. These candidates will each conduct a concert with music of their own choosing during the 2013-14 season, serving as their audition to take up the baton.

First up, Michael Hall, who's recently concluded his fifth season as Musical Director of the Southwest Florida Symphony, will conduct the Opening Night Concert, featuring Grieg's *Piano Concerto in A minor*.

Rei Hotoda, former Assistant Conductor of the Dallas Symphony Orchestra and pianist since age 3, will conduct the Holiday Concert, showcasing pieces from Tchaikovsky's *Nutcracker* and Silvestri's *Polar Express*.

Last (but not least), David Alexander Rahbee will conduct the Spring Concert, with Copland's *Appalachian Spring*. Rahbee is currently an artist-in-residence at the University of Washington School of Music in Seattle and conductor of the University Orchestra.

The new leader for the Kennett Symphony will be announced by the end of April 2014, leaving you plenty of time to get to know these exciting candidates.



*Music Excellence
for Everyone!*

CULTURAL CROSSROADS

MUSIC MASTERS
CONCERT SERIES

DELAWARE
WOMEN'S CHORUS

WILMINGTON
COMMUNITY ORCHESTRA

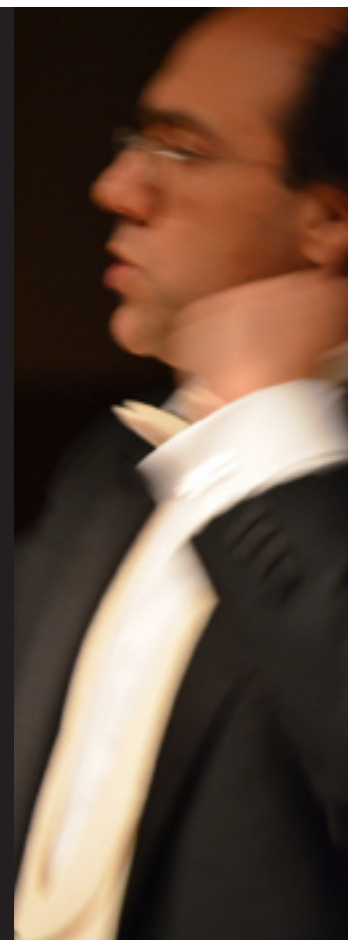
DJ & DIGITAL
TECHNOLOGY CLASSES

DELAWARE YOUTH
SYMPHONY ORCHESTRA

SUZUKI ACADEMY

*Contact us for information
or a personal tour!*

(302) 762-1132
musicsofdelaware.org



Jonathan Kreamer, Artistic Director

THE BRANDYWINE SINGERS

Chester County's Select
Chamber Choral Ensemble
2013-14 Concert Schedule

September 29 2013 . 2pm-6pm

Open House - Wine Tasting & Silent Auction

Chadds Ford Historical Society
Chadds Ford . PA

December 21 2013 . 7:30pm

**An English Christmas -
Vaughan Williams, Howells, Britten**

West Chester . PA

April 5 2014 . 7:30pm

Ralph Vaughan Williams - *Dona Nobis Pacem*

with the Immaculata Symphony
Immaculata University - Alumnae Hall
Immaculata . PA

May 31 2014 . 7:30pm

Aaron Copland - *In the Beginning*

West Chester . PA

Please visit <http://thebrandywinesingers.org> for ticket information

VoxAmaDeus Concert Season 27

Valentin Radu, Artistic Director & Conductor

BACH BRANDENBURG
SUNDAY, SEPTEMBER 15
Daylesford Abbey, Paoli

GRAND MOZART
PIANO CONCERTO 24 AND GRAND MASS IN C
FRIDAY, OCTOBER 11
Kimmel Center, Philadelphia

ANTONIO DI VENEZIA
VIVALDI TREASURES
• **FRIDAY, NOVEMBER 8**
Church of St. Martin-in-the-Fields, Chestnut Hill
• **SUNDAY, NOVEMBER 10**
Bryn Mawr College - Thomas Great Hall

HANDEL MESSIAH
• **FRIDAY, DECEMBER 6**
The Church of the Holy Trinity, Philadelphia
• **SATURDAY, DECEMBER 7**
Nassau Christian Center, Princeton, NJ
• **SUNDAY, DECEMBER 8**
Daylesford Abbey, Paoli
• **FRIDAY, DECEMBER 13**
St. Paul's Episcopal Church, Chestnut Hill
• **SUNDAY, DECEMBER 15**
St. Katharine of Siena Church, Wayne

RENAISSANCE NOËL
• **FRIDAY, DECEMBER 20**
Church of St. Martin-in-the-Fields, Chestnut Hill
• **SUNDAY, DECEMBER 22**
Bryn Mawr College - Thomas Great Hall

GERSHWIN BLUE
GERSHWIN - RAVEL - JOHN WILLIAMS
FRIDAY, JANUARY 3
Kimmel Center, Philadelphia

RENAISSANCE CANDLEMAS
FRIDAY, FEBRUARY 7
Cathedral Basilica of SS. Peter & Paul, Philadelphia

BACH GALA
SUNDAY, MARCH 2
Gladwyne Presbyterian Church

THE IDES OF MARCH
DRAMATIC BAROQUE MASTERWORKS
• **FRIDAY, MARCH 14**
Church of St. Martin-in-the-Fields, Chestnut Hill
• **SUNDAY, MARCH 16**
Daylesford Abbey, Paoli

MOZART REQUIEM
& ROSSINI STABAT MATER
• **GOOD FRIDAY, APRIL 18**
St. Katharine of Siena Church, Wayne

BEETHOVEN'S EMPRESS
PIANO CONCERTO 3 & MISSA BREVIS
• **FRIDAY, MAY 16**
Kimmel Center, Philadelphia

WWW.KIMMELCENTER.ORG 215.893.1999 | WWW.VOXAMADEUS.ORG 610.688.2800

2013-2014



**Chester County's oldest and largest non-profit
ballet company celebrating 34 years of excellence!**
Announcing Brandywine Ballet's 2013-14 Season!

Donna Muzio, Artistic Director

Nancy Page, Ballet Mistress



GRACE & GUITARS
October 25-26, 2013

ACT 1 George Balanchine's classic *Serenade*

ACT 2 ROCK Ballet featuring live music from
The School of Rock - Downingtown



THE NUTCRACKER
December 13-22, 2013

Nutcracker Tea
December 14, 21 & 22, 2013



BEAUTY AND THE BEAST
May 2-4, 2014

Be Our Guest Tea
May 3, 2014

Tickets on sale June 10!

www.brandywineballet.org

(610) 696-2711

ALL CLASSICAL ALL THE TIME

"Do I know you can listen
to BrandywineRadio.com
on your iPhone? Can you
hum a few bars?"



BrandywineRadio.com

News so local that we report lost dogs

PAOLI BLUES FEST 2013

SATURDAY, OCTOBER 5TH



FREE CONCERT & STREET FAIR

Noon to 6:00pm

11:15 Warm-Up

Rain or Shine

NEW! 6:00 Blues Pub Crawl

6 Bands - you won't want to miss:

FAST EDDIE & THE SLOWPOKES

OCTAVIA BILLY THOMPSON LITTLE BUDDY

**DOCKTAD & THE INFIRMARY
MIKEY JR**

Brought to you by:



Paoli Hospital
Main Line Health



MAIN LINE TODAY
wxpn
88.5

Celebrating the Pleasures of Today's Sophisticated Family Lifestyle
Chester County LIFE



The Devon Senior Living



SENIORS HAVE ALL THE FUN

Edwin Malet

I'm stuck in the office. Kids are in their last days of camp. Or at the beach or in the park. But I'm looking in the other direction. I'm wondering what mom and pop are doing.

Turns out, it's not so different.

Beaches and Boats

Pleasant View Retirement Community in Manheim is planning a "Day at the Beach." Residents will spend a day at Ocean City: to stroll along the boardwalk with your sweetheart Back home, residents will be building their own boats—cardboard and duct tape boats—for the annual regatta at the health club. To qualify, boats must be able to hold one person long enough to paddle once across the pool. Last year's regatta was a huge—but wet—success.

At Foulkeways in Gwynned, three residents regularly kayak at Lake Galena at Bucks County's Peace Valley Park. Other Foulkeways residents are encouraged to join them. One has a Hobie Mirage Adventure Island "sail/yak" (includes pedals, a rudder, fins and a sail). Why? Because, she says, it's "faster!"

At The Devon Senior Living, the thought is also about boats: big boats. Of the cruise ship variety. On board the USS Devon, the residents—or should I say passengers?—are traveling "around the world in 80 days." Since the June 13th bon voyage gala, they've visited a new port of call each

week: Spain, Italy, Brazil, Jamaica The passengers learn the language, wear lots of hats, and enjoy the "local" cuisine and entertainment, ending in September, with a "welcome home" party in Philadelphia.

Games of all Varieties

Although Olympians won't officially compete again until 2016 in Rio, residents of Barclay Friends in West Chester are holding their own games this summer. They're challenging themselves to rounds of ring toss and matches of balloon volleyball. For those who would rather watch, they'll button up a Hawaiian shirt and wind down at a margarita party: pineapple, melon, a refreshing win for everyone.

Residents at Hershey's Mill in West Chester will be playing tennis on "grass" this summer. Actually, on Tiger Turf, a synthetic turf used in 85 countries, including "down under." Now the players are back from other courts—the hard surfaces of those tennis courts were too painful on many joints.

It was all about sports at Lancaster's Willow Valley Retirement Community earlier this summer when residents competed in the Lancaster Senior Games and National Senior Games. Now, it's settled down a bit. They have an outdoor lawn concert scheduled (with banana split bar) featuring the music of the Barbone Street Band. And, the Ultimate Game Show is coming up in August.



Cruise into Senior Living with The Devon

This summer, we've sailed away to Spain, Italy, Greece, France, Morocco, and Australia, with more stops to go along our "Around the World in 80 Days" tour. If you haven't visited this season, we invite you to join us!

With a European-style estate as your home base, and a Five Star lifestyle taking your taste buds, your mind, and your soul on an adventure every day, the world is at your fingertips at The Devon.

Be our guest for an event or a private tour - Call 610-263-2300 or email JDewey@5sqc.com

THE DEVON
SENIOR LIVING

FIVE STAR SENIOR LIVING™

445 North Valley Forge Road • Devon, PA 19333

610-263-2300

www.TheDevonSeniorLiving.com

© 2013 Five Star Quality Care, Inc.



LIVING ASSISTANCE • REHABILITATION • MEMORY CARE



Bayada Home Health Care

At [Brandywine Senior Living](#) in Longwood, staff and residents are preparing for their biggest week of the year, with the theme: "Homemade Happiness." On September 8, they kick off the week with a Country Fair, including a petting zoo, miniature golf and a pie-eating contest. Then it's "Longwood's Got Talent," a Pinewood Derby Race, and a 60s-style cocktail party. All this is in addition to a daily exercise program, weekly trips to Longwood Gardens, and assorted other activities.

Toes are tapping at [Shannondell](#) at Valley Forge. In addition to a full calendar of ongoing activities—golf, bocce, model trains—they've added a new tap group, ballet class and belly dance group. Move over, Gene Kelly. Meanwhile, Chloe Moore is singing from opera to French cabaret to Broadway, with songs by Edith Piaf.

Outdoors and Outings

Thumbs are green at [Kendal-Crosslands](#) in Kennett Square, where their focus is on their 500-acre arboretum: forests, meadows, ponds, manicured gardens and rolling hills. Joint committees work with horticulture and nature conservancy groups to sponsor public events, service programs for area youth, educational programs and other health-giving involvement. Staff and residents have planted more than 500 woody plants and countless wildflowers in past years.

At [Quarryville Retirement Community](#), it's picnic time! Hot dog socials. Root beer float socials. Even corn husking parties! One resident, age 104, participates every year and also helps make the apple butter and apple dumplings. For the biggest picnics, over 400 skilled care, personal care and residential living residents turn out with family members.

All the [Surrey Services](#) sites have scheduled summer outings. The Drama Group is presenting several plays. The Havertown site has an Open Art Studio, where artists working in different media get together to paint, draw and offer suggestions. Surrey Media has a Zumba Gold class, while Berwyn offers Zen Tangle, a fun way to create beautiful images. They also have a group of weavers that will demonstrate how to weave beautiful pieces.

Oh, to be a kid again. ♦



Kendal-Crosslands



Riddle Village



Jenner's Pond



The Devon Senior Living



Brandywine Senior Living



Barclay Friends



Surrey Services

Communities for the Fit, Active and Independent

Our region has many communities built and managed for active seniors. They're essentially planned neighborhoods—townhouses, condos and apartments—that cater to older adults who still feel young. Some are called “55+” communities, others “active adult,” “retirement” or “independent living” communities. Generally, though, many feel like resorts. Here are a few.

Pennsylvania AVONDALE

The Traditions at Inniscrone
610-268-2593
RyanHomes.com/Traditions

DOWNINGTOWN

Ashbridge Manor
610-269-8800; AshbridgeManor.com

Downing Forge
866-736-1222; Ryvenco.com

The Woods at Rock Raymond
484-784-2100
WoodsAtRockRaymond.com

GLEN MILLS

Fox Hill Farm
610-558-4441; FoxHillFarm.org

Windsor at Glen Mills
610-459-5020
WindsorAtGlenMills.com

KENNETT SQUARE

Cartmel & Coniston (Kendal)
800-216-1920; KCC.Kendal.org

KIMBERTON

Atria Woodbridge Place
610-933-7000
AtriaSeniorLiving.com

MEDIA

Springton Lake Village
610-356-7297
SpringtonLakeVillage.com

PHOENIXVILLE

Coldstream Crossing
610-933-3493
ColdstreamCrossing.com

WEST CHESTER

Hershey's Mill
610-436-8900; HersheysMill55Plus.com

Hershey's Mill, one of the premier 55+ active adult communities in Pennsylvania, is nestled in historic Chester County's lush and picturesque countryside. Situated on 800 acres of natural beauty with award-winning landscaping and a championship 18-hole golf course on-site, “The Mill” is an exciting active adult community that anyone would be pleased to call home. Isn't it time to learn more about Hershey's Mill? Visit them at 1500 Greenhill Rd., West Chester, or call for a brochure.

The Wentworth

610-696-8044
TheWentworth-WestChesterPA.com
Quiet, neighborhood living for only 18 people in the heart of downtown West Chester. Residents can walk out the door and enjoy the shops, restaurants, festivals and all that West Chester has to offer. Resident assistants on hand all the time, three meals a day, cleaning and linen service. All this at the lowest prices around.

Westtown Reserve

215-910-3064; WesttownReserve.com

Delaware HOCKESSIN

Cokesbury Village
302-235-6000; PUMH.org

WILMINGTON

Ingleside Retirement Apartments
302-575-0259; InglesideHomes.org

Methodist Country House
302-426-8112; PUMH.org

Communities for the fit, Active and Independent (But with a Safety Net)

Many seniors are currently fit, active and independent, but want or need, either for themselves or their spouses, to live with support. There's a sequence with increasing support: *independent* living, then *assisted living*, followed by *skilled nursing* and several kinds of specialized facilities. When the sequence is combined on a single campus, it's called a *continuing care community*. Those listed have especially strong “independent living” programs.

Pennsylvania DEVON

The Devon Senior Living

610-263-2300
TheDevonSeniorLiving.com
The Devon Senior Living is located in a beautiful, peaceful rustic country setting, only minutes from area hospitals, restaurants and shopping centers. The Devon Senior Living offers award-winning living assistance, Alzheimer's/ Memory Support and short-term stays and features distinct services and amenities offered in a comfortable, home-like setting. Visit them at 445 N. Valley Forge Rd.

DOWNINGTOWN

Simpson Meadows
610-269-8400
SimpsonMeadows.org

Villa St. Martha
610-873-5300; VSM-Phl.org

Nestled in lush greenery, yet close to area churches, shopping, recreation, restaurants, health care providers, public transportation and

major highways. Resident activities include gardening, exercise, games, dining out and more. Personal Care 1 bedroom, suites and studios and Personal Care for the Memory Support Neighborhood. Skilled nursing care provided at nearby St. Martha's Manor.

EXTON

Sunrise of Exton
610-594-0455; SunriseSeniorLiving.com

GWYNEDD

Foulkeways at Gwynedd
215-643-2200; Foulkeways.org

HAVERFORD

The Quadrangle
610-642-3000
SunriseSeniorLiving.com

HONEY BROOK

Heatherwood Retirement Community
610-273-9301; HeatherwoodRetire.com

Tel Hai Retirement
610-273-9333; TelHai.org

KENNETT SQUARE

Brandywine Senior Living at Longwood
484-734-6200; BrandywineSeniorLiving.com

Scenically situated in Kennett Square, Pennsylvania, Brandywine Senior Living at Longwood provides an affordable, elegant environment for older adults who require a degree of personal assistance, but also desire the freedom of independence. Conveniently located approximately one mile south of the renowned Longwood Gardens, Brandywine Senior Living at Longwood provides residents with the security of supportive services, the dignity of independence and the fulfillment of friendship.



White Horse Village



Hershey's Mill
PHOTO: BY GERRY O'BRIEN



We Love Hershey's Mill ... You Will Too!

Enjoy the Finest Village Living for 55+ Active-Adults in Chester County.

- Gated 24/7 Security
- Walking Trails
- Homes from \$150K to \$600K
- Championship Golf Course
- Over 35 Clubs
- Beautiful Community Center
- Maintenance-Free Living
- Heated Pool
- Theater, Arts & Sports Groups



www.Hersheysmill55plus.com ♦ 610-436-8900, ext. 217

SURREY

Services for Seniors

Home Health Care • In-Home Services
Housekeeping • Transportation
Health & Wellness Programs

Solutions for Seniors

BERWYN
BROOMALL
HAVERTOWN
MEDIA
WEST CHESTER



610-647-9840 • www.surreyservices.org



Enriching lives...

THROUGH HORTICULTURE, MUSIC AND THE ARTS

Experience an atmosphere that embraces the realities of aging, while promoting the joys of living. Guided by Quaker principles, we strive to honor the spirit, humanity and dignity of each person in our care.

Barclay Friends

A KENDAL AFFILIATE *Together, transforming the experience of aging.*

A Continuing Care Community with Post-Acute Rehab
610-696-5211 • BF.Kendal.org

Please call about a walking tour of private gardens in West Chester, Saturday, September 7, 2013



Kendal-Crosslands
610-388-1441; KCC.Kendal.org
Customizable cottages and apartments adjacent to Longwood Gardens on a gorgeous, over 500-acre, accredited arboretum campus. Amenities include several pools, cultural art studios, gardens, hiking trails, tennis court, therapy and fitness, multiple dining venues, library, putting greens, computer labs and much more. Member of Leading Age, FSA. Accredited by CARF-CCAC.

LANCASTER
Willow Valley Retirement Comm.
800-770-5445
WillowValleyRetirement.com

MANHEIM
Pleasant View Retirement Comm.
717-664-6207; PleasantViewrc.org
Nestled in the rolling hills of Northern Lancaster County, Pleasant View blends a relaxing and care-free lifestyle with opportunities to explore passions and interests. With a variety of living accommodations to choose from, plus a multitude of on-campus conveniences, maintaining your active lifestyle is easier than ever. Plan your visit to see why over 400 residents call Pleasant View home.

MEDIA
Riddle Village
610-891-3700; RiddleVillage.com
Located on 40 acres in Delaware County, facilities and services include indoor pool, fitness center, putting green, beauty salon, personal trainer, bank and much more. Accommodates residents in independent living units with a variety of floor plans. Quality First participant.

Sunrise at Granite Run
610-566-3535; SunriseSeniorLiving.com

NEWTOWN SQUARE
Dunwoody Village
610-359-4400; Dunwoody.org
Sunrise of Newtown Square
610-325-5400; SunriseSeniorLiving.com

White Horse Lifecare Community
610-558-5000; WhiteHorseVillage.org
A warm and welcoming retirement community on 96 picturesque acres by a state park. Accommodations are offered in a wide variety of styles. No effort is spared when it comes to service: Wellness Center with indoor pool and spa, dance/aerobics studio, strength training, putting green, library, dining options, performing arts, enrichment programs, transportation and more. Onsite Healthcare Center. Member of Leading Age and Leading Age

PA. Accredited by CARF-CCAC. Quality First Participant.

OXFORD
Ware Presbyterian Village
610-998-2400; WarePresbyterian.org
A 77-acre campus includes the historic Ware mansion, aquatic and fitness center, community clubhouse, robust activity program, meal plan, on-site nurse, transportation and more. Short term rehabilitation and memory support on site. Coming in 2013: Vista Ridge expansion to include 62 apartments and 23 villas. Member of Leading Age PA. Accredited by CARF-CCAC.

PHILADELPHIA
Cathedral Village
215-487-1300; CathedralVillage.com

PAOLI
Highgate at Paoli
610-296-7100; GenesisHCC.com
Sunrise of Paoli
610-251-9994; SunriseSeniorLiving.com

PHOENIXVILLE
Spring Mill Senior Living
610-933-7675
SpringMillSeniorLiving.com

KENDAL®~CROSSLANDS Communities

Together, transforming the experience of aging.™

Retirement living that enriches mind, body and spirit.

Kendal is committed to enhancing the quality of life and vitality of those we serve. As a Kendal-Crosslands Communities resident, biologist Steve E. found the perfect environment for pursuing his love of beekeeping. Join us in "Together, transforming the experience of aging."



KCC.Kendal.org
610.388.1441
1109 E. Baltimore Pike
Kennett Square, PA 19348
A Not-for-Profit Continuing Care Retirement Community Serving Older Adults in the Quaker Tradition

©2013 KENDAL

POTTSTOWN

Sanatoga Ridge Communities
610-326-6282; S-R-C.org

QUARRYVILLE

Quarryville Presbyterian Retirement Community
717-786-7321; Quarryville.com

ROSEMONT

Rosemont Presbyterian Village
610-527-6500; PresbyInspiredLife.org

VALLEY FORGE

Shannondell at Valley Forge
610-728-5200; Shannondell.com

WEST BRANDYWINE

Freedom Village at Brandywine
610-383-5100; FreedomVillage.com

WEST CHESTER

Barclay Friends
610-696-5211; BEKendal.org
A Kendal Affiliate located in a quiet neighbor-

hood, surrounded by gardens, minutes from downtown West Chester. Recreation programs include physical fitness, music, creative arts, horticultural therapy and much more. Three styles of apartments and private or shared nursing care rooms are offered in this Continuing Care Community with Post-Acute Rehabilitation and Respite. Residents choose either a month-to-month or a refundable entry fee contract. Member of LeadingAge, Leading AgePA, and FSA.

Bellingham & Parklane Sr. Living
610-268-6718; SeniorLifestyle.com

The Hickman
484-760-6300; TheHickman.org

Sunrise of Westtown
610-399-4464; SunriseSeniorLiving.com

Wellington at Hershey's Mill
484-653-1200
WellingtonRetirement.com

WEST GROVE

Jenner's Pond Retirement Comm.
610-869-6801; JennersPond.org
Set on 88 acres of rolling farmland, about seven miles from Kennett Square, convenient to 20 golf courses and Longwood Gardens. Amenities and services include walking trails, art studios, libraries, four dining venues, pub and more. Offers a variety of accommodations including cottages and apartments, assisted living and skilled nursing residences. Quality First participant.

WORCESTER

Meadowood Retirement Community
610-584-1000; Meadowood.net

WYNDMOOR

Springfield Residences
215-233-6300
SpringfieldResidences.com

Delaware GREENVILLE

Stonegates Retirement Comm.
302-658-6200; Stonegates.com

WILMINGTON

Sunrise of Wilmington
302-475-9163; SunriseSeniorLiving.com

In-Home Care & Services
Bayada Home Health Care

King of Prussia, PA 610-992-9200
Main Line, PA 610-658-7150
Media, PA 610-891-9400
Newtown Square, PA 610-353-5000
Bayada.com
Home health aides provide personal care and

companion services. Skilled nurses provide care and manage chronic conditions working in consultation with the client's physician to develop an individualized plan of care.

Services Aimed at the Fit and Active

An active lifestyle doesn't necessarily require that you live in an exclusively seniors community. Conversely, even the most fit, active and independent seniors may need some help finding companionship or organizing a poker game and getting to the ballroom or ski slopes.

The list below is intended only as a door-opener.

Coatesville Area Senior Center
610-383-6900; CASCWeb.org

Downingtown Senior Center
610-269-3939; DowningtownSeniors.org

Great Valley Senior Center
610-889-2121; GVSD.org/Domain/52

Hometown Senior Center (Media), 610-566-0505

Kennett Area Senior Center
610-444-4819; KennettSeniorCenter.org

Lancaster Neighborhood Senior Center, 717-299-3943

Oxford Senior Center
610-932-5244; OxfordSeniors.org

Phoenixville Senior Center
610-935-1515
PhoenixvilleSeniorCenter.org

Pottstown Senior Center
610-323-5009; GreaterPasc.com

Surrey Services for Seniors

Berwyn, Broomall, Havertown, Media, West Chester
610-647-6404; SurreyServices.org
Surrey is a non-profit organization that helps older adults live at home with independence and dignity and continue as active members of the community. Surrey offers a wide variety of programs, from transportation to in-home services such as personal assistance, housekeeping and home maintenance. Surrey also offers a full range of activities and lifelong learning opportunities from their five locations and numerous volunteer opportunities. Serving Chester, Delaware and Montgomery counties.

Wayne Senior Center
610-688-6246; WayneSeniorCenter.com

West Chester Area Senior Center
610-431-4242; WCSeniors.org

Wilmington Senior Center
302-651-3400
WilmingtonSeniorCenter.org

YMCAs

Check local listings. YMCA.net

Multiple Locations:

Brandywine YMCA (Coatesville)
610-380-YMCA; YMCABWV.org

Octorara YMCA (Cochranville)
610-593-YMCA; YMCABWV.org

Twin Valley YMCA (Elverson)
610-913-YMCA
YMCABWV.org

Kennett Area YMCA
610-444-YMCA; YMCABWV.org

So. Chester County YMCA
(West Grove)
610-869-YMCA; YMCABWV.org

West Chester Area YMCA
610-431-YMCA; YMCABWV.org ♦

Are you seeking a carefree retirement with a lifetime of security?

When you close your eyes and imagine how your retirement years look, what do you see? Are you on the go, visiting often with friends? Are you travelling to places you've always dreamed of seeing? Are you relaxing in your garden amidst your favorite flowers? Whatever you see, it's a retirement lifestyle within reach at White Horse Village.

We offer a warm sense of community where new friends are waiting to meet you. We provide a calendar of events and excursions that change regularly to expand your mind, preserve wellness and nourish your spirit. We feature exquisite views on almost 100 acres of beautiful countryside in Delaware County. Best of all, we deliver a comprehensive range of care and service that comes automatically with residency. *Call or visit us today... and leave your cares behind.*

Becoming a Resident at White Horse Village

- A non-profit, CCAC accredited, full-service, lifecare community for people 62 and over
- 80% refundable or standard declining balance entrance plan options
- Modified health plan for those with LTC insurance
- Accommodations ranging from 510 square feet studios to 3,200 square feet carriage homes
- On-site healthcare center featuring long-term nursing care or personal care, included in all fees



(610) 558-5000



535 Gradyville Road, Newtown Square, PA ♦ www.whitehorsevillage.org



Senior Living in Beautiful Chester County



Independent and Personal Care

- Studios, 1 and 2 Bedroom Apartments
- Personal Care 1 Bedrooms, Suites and Studios
- Wellness Program
- Memory Support Neighborhood
- Convenient to Shopping, Churches & Transportation

490 Manor Avenue - Downingtown

610-873-5300

Located less than 1/2 mile South of Route 30 Bypass on Route 322



A member facility of...

Catholic Health Care Services

ARCHDIOCESE OF PHILADELPHIA

The Wentworth

Senior Living, Modestly Priced

Monthly Rentals Include

- * Dedicated 24/7 Staff
- * Homelike Atmosphere for Women & Men
- * Three Home-Cooked Meals Served Family Style



112 South Church St., West Chester | 610-696-8044

thewentworth-westchesterpa.com



MAGICAL Magical



BRANDYWINE
SENIOR LIVING
at Longwood
Life is Beautiful
A Brandywine Senior Living Community

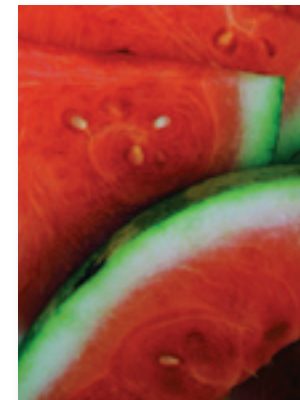
301 Victoria Gardens Drive | Kennett Square, PA 19348 | 484.734.6200

Brandywine Senior Living has Locations throughout NJ, PA, DE, CT, NY
www.Brandycare.com • 1-877-4BRANDY • Relax...We're here.

Food News

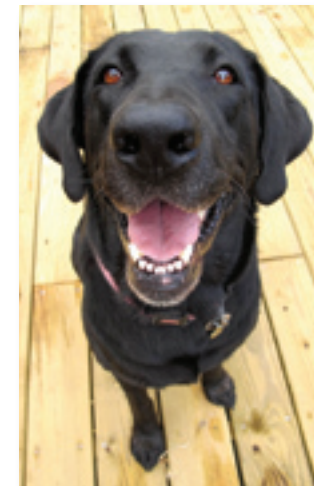
A few of our favorite things to share this month about local food and drink

Melons on the Menu. Watermelon is a perfect, versatile summer food. Experiment with new recipes for that juicy melon sitting on your counter. Blend it with something sweet like apple juice or honey for an unconventional chilled soup. Poke a popsicle stick in the rind of a triangular slice and pass it off to the kids as a cool, tasty treat. Or try watermelon salsa or gazpacho at your next picnic—one of the most summery appetizers around!



Summer Tastes Minty.

Cool down with something minty fresh. A **Mint & Lime Frozen Mojito** could be just the drink you need in August's sweltering heat. All this refreshing drink calls for is some frozen limeade concentrate, light rum (try key lime-flavored), fresh mint leaves and ice. Combine in a blender until smooth, then garnish your light-green elixir with lime slices and more mint leaves. Sip yours on the grass and in the shade!



Dining's for the Dogs.

Tired of feeling bad about going to your favorite restaurant and chowing down in front of your furry friend? Feel guilty no longer. **Appetites on Main** now features a Doggie Menu for you and your pup to enjoy on the patio during these beautiful summer days. Buy Spot a hot dog or Fido some prime rib (cut into little pieces, of course). 286 Main St., Exton. 610-594-2030; AppetitesOnMain.com.



Delaware Dines.

Our neighbor to the south is serving up two exciting food events. **World Café Live at The Queen** takes grilled cheese and beer and pairs them in innovative ways. Ever think to try a Yards Saison with Old Bay

cheddar on brioche with a mini crab cake? Now you have! Later, head to the **Second Annual Burger Battle** to sample burgers from area restaurants and vote for the People's Choice. More good news: Both events are vegetarian-friendly! *Grilled Cheese & Craft Beer Tasting: Aug. 21, 6 p.m. \$38. 500 N. Market St., Wilmington. 302-994-1400; Queen.WorldCafeLive.com. Burger Battle: Aug. 24, noon. \$50. Twin Lakes Brewing Company, 4210 Kennett Pk., Greenville. WilmingtonBurgerBattle.com.*

Cupcakes on High. Some of our favorite cupcakes on wheels are finding a permanent home in West Chester. **Dia Doce**, the green gourmet cupcake truck, is moving to South High Street this month. The sweet shop, sharing space with Cathey's Coffee Bar, uses all local, sustainable ingredients and even boasts vegan and gluten-free cupcakes. Stop by to indulge in yummy summer cupcake flavors, like Berry Lemonade and Peach Cobbler. 100 S. High St., West Chester. DiaDoce.com



Time to Barbeque

Laura Muzzi Brennan

Barbeque brings out the opinionated foodie in everyone. Some people swear by beef ribs slathered with a tangy sweet tomato-based sauce. Others crave pulled pork doused with vinegar sauce and topped with creamy coleslaw. As for which spice combination to rub into ribs or whether hickory lends a better flavor than mesquite, well let's just say that even the best of friends come to blows during these debates.

In the interest of culinary harmony, I want to propose a few things we can all agree on: 1.) Good barbequed meat requires a low temperature and typically many hours of cooking time. 2.) Side dishes are every bit as important as the meat they accompany. 3.) When it comes to satisfying your hankering for barbecue, trade in your plane ticket for Texas or North Carolina and eat right here in the Brandywine Valley.

Mabel Spann of **Mabel's Barbeque** in West Chester traces her infatuation with barbeque to childhood summers. She loved to watch her father and uncles dig a pit and cook a whole pig for hours, mopping it with a homemade

wiches. Her down-home side dishes include Southern potato salad, fried dill pickles and fried okra, collard greens and bacon-flavored cabbage. For dessert? Sweet Potato Pie and Lemon 7Up Cake, of course.

Vince Cracchiolo, proprietor of **Vinny's at Chester Springs**, fell under barbeque's spell a few years ago on a trip through Virginia and Maryland. He fell so hard that in 2011, he started smoking his own meat and expanded the menu at his 56 seat restaurant to include St. Louis ribs, beef brisket, pulled chicken, and a pulled pork, broccoli rabe and provolone sandwich.

Cracchiolo brings an innovative spirit to the kitchen—and to the cherry-and-oak burning smoker just outside it. At a customer's suggestion, he

smoked meatloaf. Then he went one better, stuffing it into a Kaiser roll along with some mac and cheese for a sandwich that epitomizes comfort food. Side dishes include old favorites such as baked beans, cornbread, coleslaw and potato salad.

Whether you're cooking with a commercial smoker as Cracchiolo and Spann do or placing wood chips inside a smoker box on your gas grill, take a lesson from the pros: be patient. Resist the urge to frequently open the door or lift the lid: you lose heat that way. Try not to poke and prod too much: you lose juice that way. Above all, savor the wait: you'll be happier that way.



Classic pulled pork sandwich



Barbequed pork ribs



Cole slaw, an essential sidedish

Oven Baked Ribs

At Mabel's Barbeque, the ribs cook in a commercial smoker, but Mabel shares this recipe for ribs that can be cooked on the stove and in the oven. St. Louis-style ribs are spare ribs trimmed into a rectangular shape—more meat than baby backs and ideal for slow cooking.

2 slabs (2-3 lbs. each), St. Louis-style ribs
1 large onion, quartered
1 oz. (about 2 Tb.) plus ½ tsp. crushed red pepper

Black pepper to taste

1 stick butter, cut in half

Salt to taste

2 Tb. Worcestershire sauce

½ C. apple cider vinegar

Place ribs in a large pot. Cover with water. Boil with onion, 1 oz. crushed red pepper and black pepper for an hour. (Don't add salt, as it may toughen ribs as they boil.)

When you have a half hour to go, preheat oven to 350°. Remove the ribs from the pot and place in a roasting pan. Discard onion and cooking liquid. Add butter, salt, more black pepper, Worcestershire sauce, vinegar and ½ tsp. crushed red pepper.

Bake for 1½-2 hours, turning several times until tender and brown and meat starts to fall away from bone. If you want the ribs even more brown and crispy, run under the broiler for a few minutes.

Makes 6 servings.

Meatloaf on the Grill

Vince Cracchiolo of Vinny's at Chester Springs prefers to use maple or cherry to lend flavor. Feel free to experiment with other types of wood. Note: If your charcoal grill is not equipped with a thermometer, insert a grill thermometer through one of the top vent holes, says Steven Raichlen in The Barbecue! Bible.

Special Equipment: charcoal grill, charcoal, wood chips

4½ lbs. of lean ground beef
2¼ C. oatmeal
2¼ C. finely chopped onion
1½ C. ketchup
3 large eggs, beaten
3 Tb. Worcestershire sauce
4 cloves garlic, minced
1½ tsp. kosher salt
1 tsp. black pepper

Soak 5-6 handfuls of wood chips in a bowl of water for 1 hour. This way, they

will smolder instead of burn when you put them in with the charcoal. Drain.

In a large bowl, combine ground beef, oatmeal, and onion. In a separate bowl, beat the eggs and whisk in remaining ingredients. Add egg mixture to beef mixture and mix until just combined. Divide into 2 or 3 disposable aluminum loaf tins, into meatloaf shape.

Since you're cooking with both charcoal and wood chips, use half the charcoal you'd use under normal circumstances. Light the charcoal and when it's covered with a thick layer of gray ash, rake it all to one side of the grill and add a handful or two of wood chips. (It's important to maintain a temperature of 225° so continue to add wood chips as necessary to reach this temperature.)

Place meatloaves on the cool side of the grill. Close the lid and cook until a thermometer inserted in the meatloaves registers 155°, about 1 to 1.5 hours.

Remove from heat and allow meat to rest. It will continue to cook and will reach 160°, a safe temperature for ground beef.

Makes 16 servings.

Slow Cooker Pulled Pork

This pulled pork is so versatile! You can serve it on a Kaiser roll topped with coleslaw and a side of pickles or on top of a bowl of cheesy grits (recipe below). Or, spread a few spoonfuls on a bed of tortilla chips, top with chopped pickled jalapeños and a mix of shredded Monterey Jack and cheddar cheese. Throw under the broiler until cheese melts.

1 head garlic, peeled and chopped
1 tsp. salt
1 bottle beer
2½ lbs. pork roast
1½ C. barbeque sauce
(Bill's BBQ sauce or cook's choice)

In a small bowl, combine garlic and salt and then add the beer. Put roast in slow cooker. Pour the beer mixture over top.

Cook on low for 7-8 hours until meat is very tender and easy to shred. Flip it over once during cooking, but other than that, don't open the lid or you'll lose too much of that wonderful moist heat.

Remove the pork to a cutting board. Cut off fat. Then using two forks, pull (shred) the pork.

Pour slow cooker liquid through a fine

Barbeque Dreams: Meet Steve Condict of Crooked Creek Barbeque

Steve Condict was the printing company rep for **County Lines Magazine** for over two decades, but in his free time, he had barbeque on the brain. It all started in 1979 with a pig roast in honor of his father's 50th birthday.

Staying up all night shoveling coals into the fire is an experience he remembers fondly, but it was that first taste of tender, oak-smoked pork that ignited his barbeque obsession. Traveling to barbeque Meccas like Kansas City, North Carolina and Texas, Steve and his wife immersed themselves in different regional styles of the well-loved American fare.

Closer to home, they hosted huge family get togethers—he has 8 brothers and sisters and scores of cousins—where he perfected his Texas-style beef brisket and pork shoulder recipes. Every time he cooked, someone would declare, "You need to start selling this!" so when he retired in early 2012, he took heed.

This summer, Steve's Crooked Creek Authentic Texas Pit Barbeque truck is ready to roll. Named for the creek near Steve's home in Tioga County, Crooked Creek Barbeque will offer sliced brisket and pulled pork in sandwiches or by the half pound. Sides include Tex-Mex corn, collard greens, sweet potato bake and pinto beans (recipe below).

We're eagerly awaiting the day Steve and his truck take a road trip to **County Lines** territory! Stay tuned.



mesh sieve. Set the liquid aside and put garlic pieces back into the slow cooker along with the shredded pork. Turn slow cooker to warm. Add 1½ C. barbeque sauce and ½ C. slow cooker liquid. Mix well.

Makes 10-12 servings.

Smoky-rubbed BBQ Chicken
BBQ purists might scoff at the idea of cooking

on a gas grill, but these chicken breasts might just convince them to try it. Steven Raichlen, author of The Barbecue! Bible, has helpful instructions for gas grill barbequing, and I followed his techniques.

Notes: 1. Many gas grills come with smoker boxes which are small (about 8"x5"x1") metal boxes topped by a lid with holes to release smoke from the wood chips. You can find smoker boxes and many varieties of wood chips (mesquite, hickory, apple) at hardware and cooking stores. 2. Jane's Krazy Mixed-up Salt contains herbs and spices as well as dehydrated onion and garlic. You can find it in many grocery stores. Jane's also makes a sweet lime pepper seasoning.

Special Equipment: gas grill, smoker box, wood chips

4, 1-lb. split chicken breasts, skin on and bone in

For the rub:

2 Tb. smoked paprika

1 Tb. kosher salt

1 Tb. garlic salt

Pinch of crushed red pepper

1 Tb. Jane's Krazy Mixed-up Salt

½ tsp. ground black pepper

1 Tb. dried sage

Soak a handful of wood chips in water for an hour.

Combine rub ingredients. Rub all over chicken, both above and below the skin. Place chicken in the refrigerator for an hour or longer.

Place wood chips in smoker box and put on grill. Turn all zones of grill to high and close lid. When smoke starts to billow from smoker box (my 3-zone grill took 20 minutes; yours may take more or less), you're ready to reduce the heat.

If you're using a 3-zone grill, turn the top and bottom burners to medium low and the center burner to off. If you're using a 2-zone grill, reduce the heat on one side to medium low and turn the other side off.

Place chicken breasts, bone side down, on the "off" burner. Cook, covered, for 15-20 minutes. Turn over and cook for another 15-20 minutes, until the internal temperature of the thickest part of the chicken reaches 170°.

Remove from grill and allow to sit, loosely covered with aluminum foil, so the chicken can absorb juices.

Makes 8 servings.

Texas-style Pinto Beans

Steve Condict of Crooked Creek Barbeque usually makes these beans for a crowd of at least 50 people, but he kindly scaled his recipe so home cooks can enjoy them too.

Notes: You'll need to start this recipe the day before as the beans require soaking. When seeding the jalapeño peppers, you may want to wear gloves to prevent irritating your skin. And remember not to touch your eyes!

2 lbs. dried pinto beans

⅔ pkg. (10 oz.) bacon, cut in strips

4 jalapeño peppers, seeds and veins removed, chopped fine

2 tomatoes, cut into small dice

1 medium onion, cut into small dice

4 Tb. chili powder and more to taste

1 tsp. dried oregano, more to taste

Salt and pepper to taste

Enough chicken or pork broth to cover the beans (Steve uses half smoked pork chop broth and half chicken broth.)

2 tsp. molasses

Optional: 3-4 Tb. chopped fresh cilantro

Burnt ends from brisket or pork, chopped

Soak beans in water over night. Drain. Re-immers in boiling water and soak another few hours. Drain again.

In a large frying pan, fry bacon until partially cooked. Remove from pan and set aside.

Add jalapeño peppers, tomatoes, onions and garlic to the bacon grease. Add olive oil if needed. Saute until tender. The tomatoes mostly dissolve. Add chili powder and oregano and black pepper.

Meanwhile, add broth to beans until they are just covered. Bring to a simmer.

Then stir bacon and vegetable mixture into beans and simmer for about half an hour or until beans are tender. Stir in molasses and add more chili powder, oregano, salt and pepper as desired. Mix in chopped meat and cilantro.

Makes 12-16 servings.

Mabel's Southern Potato Salad

Mabel Spann may have grown up in Paoli, but her Southern heritage—her family hails from Georgia—announces itself in her strong opinion about the right way to make potato salad. Namely, any potato salad worth its potatoes must have eggs and mustard. "Real potato salad is yellow," says Mabel. Her happy customers quite agree!

6 large red potatoes

6 large hard-boiled eggs, peeled

and chopped finely

½ C. celery, small dice

1 C. Hellman's mayonnaise

1 tsp. salt or to taste

1 tsp. black pepper or to taste

1 tsp. garlic powder

¼ C. sweet relish or to taste

French's yellow mustard (for color and taste)

Optional: sweet onion, minced

Boil potatoes with skin on until they can be pierced with a fork. Allow to cool. Keep the skins on if you prefer. Cut into ½" dice. Toss with eggs and celery.

In a separate bowl, mix remaining ingredi-

ents. Then toss with potato mixture.

Makes 6-8 generous servings.

Homemade Cabbage

Recipe courtesy of Mabel Spann, Mabel's Barbeque. Cabbage may not be glamorous on its own, but cooked with bacon and salt pork, it becomes the perfect complement to tangy barbeque.

2 heads cabbage

1 lb. bacon

1 package (about 2 oz.) salt pork

Salt and pepper to taste

Wash, quarter and core cabbage. Then, roughly chop it, rinse it well and set aside.

In a large pot, fry bacon and salt pork until golden brown and crispy.

Drain most of the grease off and immediately return the pan to the heat. Add the cabbage, salt, and pepper. The cabbage should sizzle.

Add water to half way up the cabbage level. Bring to a boil. Then reduce to a simmer and cover. Cook until tender, approximately 15 to 20 minutes.

Makes 4-6 generous servings.

Cheesy Grits

I've used both slow- and fast-cooking grits, and each has its merits. My current favorite is Southern-Style White Corn Grits by Bob's Red Mill. Once the broth boils, they're ready to eat in 10 minutes. If you use slow-cooking grits, follow package directions.

6 C. chicken, shrimp or vegetable broth

2 C. grits (see headnote)

½ C. heavy cream, room temperature

2 C. shredded cheddar cheese

3 scallions, light and dark green parts only, thinly sliced

Salt and pepper to taste

Bring broth to a boil. Add grits and reduce to a simmer. Stirring frequently, cook for 5 minutes. (Sometimes, the grits bubble and can splash your skin, so I wear an oven mitt on my stirring hand.) Remove from heat. Cover and let stand for 5 more minutes.

Add cream and cheese and stir until cheese melts. Season with salt and pepper. Top each serving with scallions.

Variation: Replace cream and cheddar cheese with 2-3 oz. crumbled goat cheese.



We Offer a Variety of Trips—
Canoeing • Kayaking
Tubing
Picnics • Groups
Birthday Parties



Day Trippin'... For Less

Monday	Students	Buy One	Get One	FREE
Tuesday	Buy One	Get One	FREE	
Wednesday	Senior Citizens	20% Off		
Thursday	Buy One	Get One	FREE	
Friday	20% Off Any Trip			

One coupon per craft. Not valid with other offers or prior purchases. Free trip must be used on same day. Groups excluded. Expires 9/30/13. Students must show ID. Senior Citizens Discount for 55 and over.

1810 Beagle Road • West Chester • 610-793-2279
www.northbrookcanoe.com • Open 7 days a week



11TH ANNUAL WEST CHESTER ROTARY CHILI COOKOFF
SUNDAY 10/13/2013

WHO MAKES THE BEST DARN CHILI? YOU BE THE JUDGE!

Noon to 3 p.m. • Gay Street • Gates open at 10:30 a.m. • Rain or Shine Event
\$10 All you can eat

www.WestChesterChiliCookoff.com

Presented by:  Poblano Sponsor: 



BIENVENIDOS AMIGOS
(WELCOME FRIENDS)



Best of Delaware
1933-1999 & 2002-2010
Delaware Today Magazine

Best Mexican Restaurant
1994-1996 & 1998-2006
Wilmington News Journal



907 S. High Street,
West Chester, PA
610-429-8101

2209 Concord Pk,
Rte 202 & Silverside Rd.
Wilmington, DE
302-478-9744

4015 S Concord Pk, Rt 202
Fairfax Shopping Ctr,
Wilmington, DE
302-778-4646

Instead of scallions, top with ½ C. snipped fresh chives.

Makes 8 generous servings.

Alabama BBQ Sauce

Vince Cracchiolo says that initially some of his customers are skeptical about this white BBQ sauce, but once they try it, they're hooked. He adapted this recipe from Big Bob Gibson's BBQ Book which contains recipes from the Decatur, Alabama BBQ joint, an American favorite for over 85 years.

- 4 C. regular mayonnaise
- 2 C. white vinegar
- 10-oz. apple juice
- 4 tsp. horseradish
- 4 tsp. ground white pepper
- 6 tsp. lemon juice
- 2 tsp. salt
- 1 heaping tsp. cayenne pepper

Stir all ingredients together and keep refrigerated. The sauce will stay good for at least a week.

Makes 6-7 cups.

Bill's BBQ Sauce

My husband Bill grew up in Princeton, New

Jersey, far from barbeque country, but he knows how to whip up a delicious sauce to slather on ribs, pulled pork and chicken.

- 2 C. ketchup
- ¼ C. maple syrup
- ¼ C. Worcestershire sauce
- 1 Tb. garlic salt
- 1 Tb. Frank's Red Hot sauce

Mix all ingredients together. The sauce will keep in the refrigerator for two weeks. It may keep even longer, but we devour it so quickly, we've yet to find out! Let me know how long yours lasts.

Makes 2½ cups.

Crunchy Coleslaw

I prefer a crunchy coleslaw, so I use a knife rather than a box grater to slice the cabbage into ribbons. If you are doubling or tripling the recipe, use the slicing disk of your food processor on the cabbage.

- 1 head cabbage, approximately 2 lbs.
- 1 carrot, finely chopped
- 2 Tb. minced shallots
- ½ C. mayonnaise
- 2 Tb. apple cider vinegar

- ¼ C. sweet pickle relish
- 2 tsp. sugar
- 2 tsp. celery seed
- Salt to taste

Remove 5-6 of the large outer leaves of the cabbage. Wash and drain on paper towels.

Core and quarter the cabbage and rinse. Drain well. Slice the cabbage into thin ribbons (about ¼" thick by 1½-2" long). In a large bowl, toss cabbage, carrots and shallots together.

In a small bowl, whisk together mayonnaise, vinegar, relish, and sugar. Pour over cabbage mixture and combine well. Add celery seed and salt. Refrigerate for at least an hour so flavors can bloom. Taste and adjust seasonings.

To serve, line a bowl or serving platter with the cabbage leaves and mound coleslaw in the center.

Makes 8-10 servings. ♦

To contact Laura, please e-mail her at LauraBrennan@ValleyDel.com.

Visit CountyLinesMagazine.com for more great recipes.

Winner "Top 10 Romantic Inns" Award



3542 Old Philadelphia Pike
POB 598, Intercourse, PA 17534
800.664.0949

www.inn-spa.com



**GOSCHENHOPPEN
HISTORIANS
47TH ANNUAL**

*Authentic
Pennsylvania
Dutch*

FOLK FESTIVAL

Friday, August 9th, 12pm to 8pm
Saturday, August 10th, 10am to 6pm

**FOODS
CRAFTS
STAGE PROGRAMS**

NO PETS

16-Adult \$12.00
2-day pass \$18.00
6-15 \$3.00
Under 6 Free

Henry Antes Plantation

318 Colonial Road (Montgomery County)
Perkiomenville, PA 18074

215-234-8953 www.goschenhoppen.org

Shady Lady, Inc.® Custom Window Treatments



Offering uncompromising quality
& meticulous workmanship,
for over 20 years.

Specializing in:

- Interior Wood Shutters:
Traditional & Wide Blade
- Drapery & Valances
- Woven Wood Romanfold Shades
- Cellular & Pleated Shades
- Blinds • Custom Roller Shades

Visit our showroom located at 872 Penn St.,
Bryn Mawr, PA 19010 • Hours by Appointment Only

610-527-4268 • 800-791-2424

Welcome Neighbor!

Our sponsors make it possible!

It is through the thoughtfulness and caring of many fine local businesses and professionals that our visits to newcomers and other celebrants are made possible.

We have some room in our basket for a few more sponsors. You can learn about Welcome Neighbor and our unique personal promotion service at our web site:

www.welcomeneighbor.us

Request Our Power Point Presentation:

610-358-0580

Maintain Your Active Lifestyle



at Pleasant View Retirement Community
544 North Penryn Road Manheim, PA 17545
www.PleasantViewrc.org | **717-665-2445**



Penn Liberty Bank's Classic Club, exclusively designed for individuals age 55 or better, combines the best of banking with a host of valuable benefits.

- Interest bearing checking account
- FREE exclusive design checks
- Fun, bank sponsored trips
- Informative seminars



Blue Bell 610-535-4800	Chester Springs 610-535-4830	Downingtown 610-535-6820
East Goshen 610-535-4850	Limerick 610-535-4880	Malvern 610-535-4820
Paoli 610-535-4890	Trooper 610-535-4860	Wayne 610-535-4580

Classic Club Checking is available to clients age 55 or better.
Minimum opening deposit for a Classic Club Checking account is \$50.

WWW.PENNLIBERTYBANK.COM



James A. Cochrane, Inc.

379 Templin Road
Glenmoore, PA 19343
Tel: (610) 469-6100



James A. Cochrane, Inc.
REALTOR



Spectacular custom John Diamant home on 20+ acres in serene country setting! Main home features 3 bedrooms w/1st floor master, 3 baths, lg mudroom & office/workout space. High-end finishes & upgrades throughout! Gourmet kitchen, living & dining area share open floor plan w/unobstructed views of the valley! Covered Pennsylvania bluestone porch, glass-enclosed sunroom w/ fieldstone fireplace adjoins the kitchen-dining area. Elegant yet comfortable, impeccably maintained & every amenity included. Separate 3-car garage includes a workshop & 1200sq ft guest quarters. Glorious swimming pool area w/ pool house. Large Barn added in 2008. Greenhouse with propane heater & vent system. Generator powers all during outage. Grounds highlight the amazing views & feature irrigation system & beautiful landscaping. Come find sanctuary in this amazing property! Offered on 20+ acres for \$2,575,000 or on 37 acres for \$2,975,000. For more information visit www.182trythallroad.com.

Visit our website www.cochraneinc.com for these & other properties!

Index to Advertisers

County Lines is available at the following advertisers. See our Advertiser Directory on CountyLinesMagazine.com.

Alegacy Furniture	20	at People's Light & Theatre.....	27	Penn Liberty Bank	65
Aras Fine Rug Cleaning and Restoration	33	Flowing Springs Landscape Design.....	19	PA Cyber Charter School	40
Katherine Azar Photography	66	Gateway Medical Associates.....	7	Plantation Field Horse Trials.....	23
Ball & Ball	16	Giuseppe Cabinets, Countertops & Tiles.....	38	Pleasant View Retirement	64
Barclay Friends.....	54	Goschenhoppen Folk Festival	65	Pru. Fox Roach / H. Gross	6
Bayada Home Health Care.....	12	Hershey's Mill Realty	54	Riddle Village.....	67
Brandywine Ballet.....	47	Hope Veterinary Services	32	Shady Lady Inc.....	64
Brandywine Fine Prop./Sotheby's B. Jones & K. Nader	9	The Inn & Spa at Intercourse.....	65	Shop Chester County	22
Brandywine Radio	47	Jenner's Pond	14	Sprouts Consignment.....	32
Brandywine Senior Living	58	Kendal-Crosslands	55	Surrey Services	54
The Brandywine Singers	47	Key Financial	4	E.C. Trethewey Building Contractors, Inc.	5
Cecil County, MD.....	2	Kimberton Whole Foods	27	Villa St. Martha	57
Chapel Cabin Shop	66	King of Prussia	13	Vox Ama Deus	46
Chester Co. Hearth & Home.....	16	La Tolteca Mexican Rest.....	63	Wall & Walsh, Inc.....	cover
James A. Cochrane	65	Linda's Doggie Stylin'.....	33	Welcome Neighbor	64
Walter J. Cook, Jeweler	10	Ludwig's Corner Horse Show	21	C.P. Welde.....	38
Crozer Keystone	3	Malvern Federal Savings Bank.....	31	The Wentworth	57
Custom Coatings	22	Malvern Preparatory School.....	23	West Chester Rotary Chili Cookoff	63
The Devon Senior Living	50	Martin's Chair, Inc.....	38	White Horse Village	56
Dressage at Devon	21	Music School of Delaware	47	Wolfe's Baldwin Brass	32
Dutchie's Stone Works, LLC	38	Northbrook Canoe	62		
Fairville Friends	40	Nota Bene Boutique	32		
The Farmhouse & Bistro		Paoli Blues Fest & Street Fair.....	48		

This Index is provided as an additional service to our advertisers. County Lines takes no responsibility for errors.






Katherine Azar

PHOTOGRAPHY

Family Portraits, Children,
Pets, Action Sports, Seniors

KatherineAzarPhotography.zenfolio.com

Kathy@KatherineAzar.com

610-291-1104

THIS SUMMER

~Enjoy Valley Forge Park in All its Beauty~

Washington Memorial Chapel Cabin Shop



Lunch Served Daily

- Souvenirs
- Giftware
- Byers' Choice

Our Own Baked Goods & Candy

610-783-0576

Mon-Fri: 10am-5pm, Sat-Sun: 10am-5pm

Don't Forget to Bring Friends and Family For the Carillon Concerts ~ Free & Open to the Public every Wednesday in July & August at 7:30

Cabin Shop open until 8:30 on Wednesdays

Located Behind Washington Memorial Chapel Route 23

1 Mile West of the Visitors Center

"Where The Past Makes A Great Present"

Be at ease with Lifecare, at Riddle Village.



1048 West Baltimore Pike • Media, PA 19063

www.riddlevillage.org

(610) 891-3700

Only Lifecare retirement living offers you the ultimate sense of security in knowing that with one decision, you have planned for your potential long-term care needs.

In fact, Lifecare is recognized as the most complete, comprehensive retirement community option available.

Lifecare means not having to worry about your future. Visit Riddle Village, Delaware Valley's leading Lifecare community, today!



66 County Lines | August 2013 | CountyLinesMagazine.com