

Beautiful Designs Inspired By You ...



Sugarbridge
Kitchen & Bath

Wood Mode
FINE CUSTOM CABINETRY

484.318.8367 • www.sugarbridge.com • Paoli Design Center, Paoli PA

VISIT OUR BEAUTIFUL NEW SHOWROOM AT THE PAOLI DESIGN CENTER

MAY 2014

\$3.95

COUNTY LINES

Unique places, interesting events, fine shopping and the special lifestyle of eastern Pennsylvania and Northern Delaware



EQUESTRIAN ISSUE

35th Anniversary



EXCELLENCE SINCE 1979
FROM CONCEPT TO COMPLETION
DESIGN ~ BUILD

Over the past Thirty-Five years, thousands have selected Creative Nook to remodel their homes. We THANK YOU & look forward to many more years!



610-644-6665 ~ 95 EAST LANCASTER AVE., PAOLI, PA 19301
WWW.CREATIVENOOK.COM

PA006570



ABKtoday
Old-Fashioned Quality Built For Modern Lifestyles



We know that home improvement is really about life improvement—and the first, most important step is to get to know YOU. ABK Today will meet with you to discuss all the details so that we can create the perfect remodel to fit your family and your home.

ABK Today offers:

- Concepts created by a nationally recognized, award-winning design team
- Lancaster County craftsmen using premium materials and providing superior workmanship
- On Time. On Budget.™ promise that your project will be completed the right way, right on time



AMISH-MADE CUSTOM CABINETRY

KITCHEN RENOVATIONS • BATH REMODELS • HOME ADDITIONS • MORE

1929 Lincoln Highway East, Suite 120 | Lancaster, PA 17602 (By Appointment Only) | 717-715-9488 | www.abktoday.com

WALTER J. COOK JEWELER

New for Spring



by Lika Behar

Chestnut Village Shoppes | 36 Chestnut Road | Paoli, PA 19301

610.644.5347

www.walterjcookjeweler.com



Turn the corner without leaving the neighborhood.

From sports injury rehabilitation to physical, occupational and speech therapy, we offer the skilled expertise to help you achieve your best—right here in Chester County. Bryn Mawr Rehab Hospital, part of Main Line Health®, has been a leader in physical medicine and rehabilitation for more than 40 years. Our outpatient therapy sites bring you the same level of personalized care, from an experienced team of therapists who are dedicated to helping you gain strength, restore function and return to an active life.

THREE LOCATIONS IN CHESTER COUNTY:

Exton

Exton Square Mall | Lower Level
154 Exton Square Parkway
484.565.8770

Malvern

414 Paoli Pike
(inside Bryn Mawr Rehab Hospital)
484.596.5000

West Chester

1060 Andrew Drive | Suite 120
484.596.5830

SERVICES INCLUDE:

- Concussion treatment
- Orthopedic rehab
- Sports physical therapy
- Sports specific training
- Vestibular therapy

Main Line Health's Outpatient Rehabilitation Network has ten locations throughout the region. For more information, visit mainlinehealth.org/outpatientnetwork



Bryn Mawr Rehab Hospital

Main Line Health®

Well ahead.®

Quick
when
you're
sick.

Pioneer Urgent Care. Now part of
Crozer-Keystone Health System.

No-appointment, no-waiting care for everything short
of the ER, with extended hours and experienced doctors.
And now backed by the strength of Crozer-Keystone
Health System. Find out more at PioneerUrgentCare.com.



610-459-FAST (3278) | 1572 West Chester-Wilmington Pike
West Chester, PA | M-F 9 a.m. - 9 p.m., S&S 9 a.m. - 7 p.m.



www.urgentcare.crozerkeystone.org

Holly Gross Group

Holly
Gross

Gus
Brown

Harry
Price

Tara
Rucci

Dick
Gross

Honesty ♦ Professionalism ♦ Unparalleled Service

Call 484.678.0367 Office 610.431.1100

www.HollyGross.com


BERKSHIRE HATHAWAY
HomeServices
Fox & Roach, REALTORS®

**Fox & Roach,
REALTORS®**

New Listing



LANDENBERG VILLAGE

Here are 25 rental units: 18 1 & 2 BRapts. plus 7 storage units. All located in 7 different building. Great rental history & superior cash flow!!! \$1,685,000



WARWICK TOWNSHIP

Rock Run Farm contains 98+ acres, magnificent specimen trees, 3 ac. lake & the main house privately set down a very long lane. The home is in need of restoration. \$1,500,000



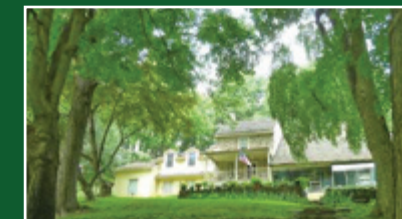
NORTH EAST, MD

Overlooking the North East River, this charming 4BR, 4.2BA home sits on 7+ waterfront acres & was tastefully redone including a fabulous Kit. & Master Suite! \$1,493,500



UNIONVILLE

C.1850 barn conversion with formal rooms. 1st fl MBR suite plus 4 add'l BR & 4.2 BA. Finished Lower Level plus 2BR, 1.1 BA Guest/Pool House, Unionville Schools. \$1,394,500



EAST FALLOWFIELD TOWNSHIP

On 63.1 park-like acres, Fineskinde Farm is like owning your own preserve! 4BR, 2.1BA, main house (c.1700 with later additions), great stone barn, & several rental units. \$1,347,300



MARSHALLTON

This horse farm sits on 20+ acs. privately and quietly set! The 5BR, 4.1BA main house, large FR & finished lower level. 5 stall barn & several pastures. This is a MUST SEE! \$1,275,000



CHESTER SPRINGS

Located in a protected area of Chester Springs sits this 4BR, 3.2BA traditional style home on 11 lovely acres with pool, pond, waterfall & more! \$1,250,000



EAST BRADFORD

Beautiful 4BR, 4.1BA home opened for Chester County Day. Magnificent Kitchen/Family Room & baths, reconstructed barn - all on 10 acres. Great location on a quiet road! \$947,900



BIRMINGHAM TOWNSHIP

BUILD YOUR DREAM HOME! 10 Acre parcel located in the historic district, surrounded by open space, farm has a 4BR antique home & small barn. GREAT OPPORTUNITY!!! \$749,900



New Listing

EAST BRANDYWINE TOWNSHIP

11 year old 4BR, 3.2BA Custom Farmhouse has the charm of an antique home! Super Kitchen, Master Suite, Bonus Room & Fabulous Views! Downingtown Schools! \$630,000



ALONG THE BRANDYWINE

3BR, 2.1BA c.1787 stone home bordering Hibernia Park. Also a great barn with garage space below & large party space, 1BR, 1BA guest quarters - great views!!!! \$575,000



UNIONVILLE VILLAGE

Charming antique home updated with new Kitchen, 2 Baths, central AC & heater, new flooring, new windows - list goes on! Call Gus Brown at 610-633-7292 for add'l details. \$285,000

But Close to Home

<i>Barron's – Top 100 Women Financial Advisors (2006-13)</i>
<i>Fortune – One of America's Top 100 Independent Advisors (2008)</i>
<i>Wealth Manager – 50 Most Influential Women in Wealth (2009)</i>
<i>Worth – One of the Nation's Top Wealth Advisors (2009, 2010, 2011)</i>
<i>The 50 Top Women in Wealth – Wealth Manager Magazine (May 2010)</i>
<i>Philadelphia Business Journal – #2 Top Wealth Advisor (2010)</i>
<i>Registered Rep – Top 50 Independent Broker/Dealer Women Advisors (2011)</i>
<i>Barron's – Top 1,000 Financial Advisors (2006-12)</i> <i>Only 40 Recognized in Pennsylvania (And the Only Woman in 2012!)</i>

Patti Brennan CFP®



1560 McDaniel Drive • West Chester, PA 19380
(610) 429-9050 • (610) 429-9279-fax
www.keyfinancialinc.com



Securities and Advisory Services offered through Royal Alliance Associates, Inc., Member FINRA/SIPC and a registered investment advisor. Advisory services offered through Key Financial, Inc., a registered investment advisor, not affiliated with Royal Alliance Associates, Inc. *Fortune's* Top 100 Independent Advisors is based upon assets under management. *Worth's* Nation's Top Wealth Advisors are selected based on experience, education, certifications, fiduciary status, compliance record, wealth management services, methods of compensation, and scope of client services. For more information visit: www.worth.com/index.php/about-worth. Candidates for the *Philadelphia Business Journal* and *Barron's* were determined by The Winner's Circle. Candidates were valued on criteria such as assets under management, revenues, experience, and record of regulatory compliance and complaints. Candidates were further vetted based on in-depth interviews and discussions with management, peers and customers, as well as professional achievements and community involvement. The Winner's Circle does not receive compensation from participating firms or their affiliates, financial advisors or the media in exchange for rankings. In addition to the criteria used for the *Barron's* article and the *Philadelphia Business Journal*, *Wealth Manager* magazine takes into consideration service to industry organizations and mentoring to others. Third-party rankings from rating services are not a guarantee of future investment success. Working with a highly-ranked advisor does not ensure that a client or prospective client will achieve the same level of results. These rankings should not be construed as an endorsement of the advisor by the client or the representative client. The representative client is not a registered Rep Magazine. Advisors are ranked by assets under management, effective Nov. 1, 2011. Only those advisors for whom a majority of assets correspond to retail clients were eligible for the list. The principle behind the Financial Times 400 is to focus on investors. Financial advisers were assessed from the perspective of current and prospective investors. The FT rewarded attributes that investors care about (or should care about) and not the value of those advisers or bodies. The methodology is quantifiable and objective. In autumn 2012, the FT solicited advisers' practice information from the 40 largest US broker-dealers and requested data for each group's most elite advisers. By working with organizations instead of individuals, the FT was able to obtain verified adviser data instead of relying on self-reporting, thus increasing credibility. The FT assessed those with more than 10 years of experience and \$250m or more in assets under management (AUM); brokerages had no subjective input. The formula used is based on six broad factors and calculates a numeric score for each adviser. Areas of consideration include adviser AUM, asset growth, years of experience, industry certification, Fina compliance record and online accessibility. •AUM signals experience managing money and client trust. •AUM growth rate Growing assets is a proxy for performance and for asset retention and ability to generate business. •Years of experience indicates experience managing assets in different economic and interest rate environments. •Compliance record provides evidence of past client disputes. A string of complaints can indicate problems. •Industry certifications (CFA, CFP, etc) show technical and industry knowledge and obtaining these designations shows a professional commitment to investment skills. •Online accessibility illustrates commitment to providing investors with easy access and transparent contact information. AUM and asset growth comprise roughly 80-85 per cent of each adviser's score. While each adviser earned an individual score and could be ranked against another, the FT 400 is presented as an elite group, not a competitive ranking.

HOME OF THE MONTH

**Private & Premier
Radnor Hunt Location**



* Peaceful Setting on Private Lane
backing to Acres of "Open Space"

* "Down to the Studs" 10+ yrs ago &
added Great Rm, Master Suite,
Library & Princess Bedroom

* Fabulous Pool & Perennial Gardens



"Still Meadow"

**Wonderful Williamsburg Colonial
w/ Old World Charm &
The Best of New Amenities!**

* Total Renovation - EB Mahoney

* Gardens by Naturescapes



**Truly Amazing Views
from every Window**

Coming Soon

Willistown / Radnor Hunt

Brick Colonial owned by a
Perfectionist & Gardener at
Fox Chase & White Horse
Cozy & Well Maintained
Marvelous Views of "Rockhill"
4 BRS, 2.2 Baths

Classic Colonial in heartland
of Willistown on Hillview Rd.
Charming Home - Hdwd Flrs.
Scr.Porch, Nice Lot & Dog Fence
5 BRS, 3.1 BThs

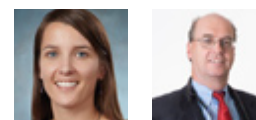
happened
AGAIN!
Barron's June 2011
Patti Brennan named
one of The Top 100
Women Advisors
in America!



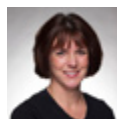
OUR FAMILY

taking care of

YOUR FAMILY



COATESVILLE | DOWNINGTOWN | LIONVILLE
WEST CHESTER | NEWTOWN SQUARE



VISIT OUR WEBSITE AT: GATEWAYDOCTORS.COM



Gateway Medical Associates,
in Chester and now Delaware
County, has been serving our
community since 1996. Gateway
strives to provide the highest
quality primary and specialty
care with a focus on our patients'
wellbeing and health.

Our 43 physicians and nurse
practitioners provide quality care
from any of our 10 convenient
locations throughout the Counties.

**NEW
PATIENTS
ALWAYS
WELCOME.**

*You can now schedule
appointments online!*

GATEWAYDOCTORS.COM

610.423.8181



NCQA Level 3 Certified Patient
Centered Medical Home Practice
Meaningful Use Recognized



Brandywine Fine Properties

Sotheby's

INTERNATIONAL REALTY



NEW LISTING

Trythall Road | Chester County | 37+ Acres

Spectacular custom home with gorgeous views featuring gourmet kitchen, in-ground pool, large barn, greenhouse and guest quarters



Green Valley Road | Newlin Township | 16+ Acres



Queens Rangers Lane | Birmingham Township | 4.2 Acres

Clonmell Upland Rd | Kennett Township | 23 Acres

www.BrettandKarenProperties.com | Brett Jones 302.420.6644 | Karen Nader 484.888.5597

Willowdale Town Center | Kennett Square, Pennsylvania | 610.474.6520 | www.BFPSIR.com

NEXT TIME MOM GOES TO THE STORE, WILL SHE KNOW HOW TO COME BACK HOME?



When someone you love has Alzheimer's disease or another form of memory impairment it changes their world and yours forever.

We know how overwhelming this can be, so we have designed a revolutionary program that can help. Bridge to Rediscovery is an innovative, Montessori-based approach to Memory Care that can help your loved-one rediscover the joys in everyday life.

Through personalized activities that encourage creativity and self-expression, residents have the freedom to discover things for themselves and re-discover things they have always enjoyed. Residents enjoy the comforts of home, combined with the support and security they need.

Now is the perfect time to see why Bridge to Rediscovery has been rated "Best of the Best" by the Assisted Living Federation of America. Please contact us today and let us help you regain the sense of security you and your family deserve.

THE DEVON
SENIOR LIVING

610.263.2300

445 N. Valley Forge Rd. • Devon, Pa 19333
610.263.2300 • www.thedevonseniorliving.com

Facility #46008

FIVE STAR SENIOR LIVING™



©2011 Five Star Quality Care, Inc.



Willistown Township

"Creighton Farm" on 73 acres. Restored 1805 house with 1995 addition. Sunny southern exposure, rolling pastures & large bank barn along with a stone walled pond. Call for Details



Willistown Township

Magnificent 35 acre estate with original mill house exquisitely restored by Peter Zimmerman. Space for formal living yet designed for true family comfort. Call for Pricing



East Fallowfield Township

"Maple Leaf Farm" Restored farmhouse, carriage shed w/charming apt, 2 exceptional barns, pond & gently rolling 95+/- acres in Cheshire Hunt, convenient to The Laurels and major arteries. Call for Details



PRESERVING A COUNTRY WAY OF LIFE

— Since 1976 —



Charlestown Township

"Strawberry Hollow Farm" on 10 acres with stone farm house with large MB & kitchen addition. Beautiful English gardens, barn, paddocks, pond, springhouse & orchard. \$1,650,000



London Grove Township

Grand & stately 19th c. house with magnificent addition with 34 acres, pool, tennis court & spacious stable w/5 stalls. This is a true estate property! \$2,595,000



Kennett Township

Country estate with elegant 5 BR colonial farmhouse with every modern amenity. Beautiful woods, winding stream & lush perennial gardens with pool and separate pool house. \$2,475,000

Georgianna Hannum
Stapleton

610.347.2065



COUNTRY
PROPERTIES

ROUTE 82 & 162 - UNIONVILLE, PA 19375



BERKSHIRE HATHAWAY
HomeServices
Fox & Roach, REALTORS®

View all our fine properties at

www.TheCountryProperties.com

Cindy Orr
Amy McKenna
Mark Willcox
Rob Van Alen
Jackie Roberts
Jody Vandegrift

From *the*
Editor



Choosing gorgeous photos to share with you each month is a particular pleasure of editing *County Lines*. Especially cover photos. Here's a look back—including our first May issue—showcasing our equestrian covers. We hope you'll agree this month's choice with the saddlebred riders, shot by Alix Coleman, is another stunner.

That cover shot at the Devon Horse show is just a sample of what's in this issue—a handy Devon Horse Show Schedule, Guide to Devon Style, and preview of the Art Gallery at Devon, from May 22 to June 1. Don't miss the trifecta of steeplechase events that launch the month—Winterthur's elegant Point-to-Point, Willowdale's Mother's Day tradition, and Radnor Hunt's Race for Open Space. Lauren Klosinski's "The Season for Steeplechase" sums it up. With more fabulous photos.

Carol Metzker discovers "What's New in Wayne," Elana Beckett says "Malvern Blooms," and Sara Stevenson recommends "Earth Friendly Gardening." For more gardening, check our "Home & Garden Tour Guide," "Landscape & Design" ideas, and preview of the Ware Decorator Showhouse & Gardens.

And if gardens make you sneeze, learn how to avoid the pollen vortex with new allergy treatments in our "Being Well" column by Dr. Michael Hoffmann.

We have art and theaters covered, too. Gallery Round Up's got studio tours, art festivals and galley walks, and Theater Spotlight shines on People's Light & Theatre's *Woody Sez* (about Woody Guthrie) and DuPont Theatre's *Million Dollar Quartet* (Johnny Cash, Jerry Lee Lewis, Carl Perkins, Elvis Presley).

Food and drink are in focus with brunch at Amani's BYOB in Downingtown (or is that Dining-town?), "Main Dish Salads" served up in Brandywine Table, and "Summer in a Glass" highlighting gin, tequila and wine ideas for a sippable season. Make mine a negroni.

May is a marvel of great events, so check out our Best Local Events coverage—in print and online.

Have a marvelous May and thank you for reading *County Lines*!

Jo Anne
Jo Anne Durako
Editor



COUNTY LINES MAGAZINE

May 2014

Volume XXXVII, Number 9

PUBLISHER
Edwin Malet

EDITOR
Jo Anne Durako

ART DIRECTOR / PRODUCTION
Alex Bianco

ASSOCIATE EDITOR
Marci Tomassone

ASSISTANT EDITOR
Jaimielynn Cooper

DINING OUT EDITOR
Lise Monty

FOOD EDITOR
Laura Muzzi Brennan

ACCOUNT EXECUTIVES
Sue Angelucci Sontagh
Chrisy Holsopple

BUSINESS MANAGER
Debra M. French

CONTRIBUTING WRITERS
Laurel Anderson
George Fitzpatrick
Matt Freeman
Jane Gallagher
Emily Hart
Cooky McClung
Carol Metzker
Cindy Walker
William Woys Weaver

EDITORIAL INTERNS
Elana Beckett
Lauren Klosinski

CONTRIBUTING PHOTOGRAPHER
Alix Coleman

To get a copy of *County Lines*, check our website's Get A Copy page or purchase one at Barnes & Noble, Giant, Wegmans, Whole Foods and Chester County Book Company.

Contact us at:
ValleyDel Publications, Inc.
893 S. Matlack Street, Ste. 150
West Chester, PA 19382.
610-918-9300. Info@ValleyDel.com
Subscriptions: Special rate \$19.50/year.



County Lines Vol. XXXVII, No. 9. Copyright, 2014 by ValleyDel Publications. All rights reserved. *County Lines* and *County Lines Magazine* (ISSN 0195-4121) are registered names of ValleyDel Publications, Inc. Use of these names without the consent of ValleyDel Publications, Inc. may subject the infringer to penalty and suit as provided by law.

CountyLinesMagazine.com

Surrounded by private French Creek Golf Club, the creation of Olympic designer Gil Hanse.

Pennsylvania's WILLIAMSBURG

Olde Meets New

Homes are designed combining authentic 18th century architecture with luxurious 21st century livability.

Highest Quality Custom Homes

Where custom truly means custom and quality is innate.

Award Winning New Homes

Olde Bulltown Village is the regional and national winner of "Best Home" and "Custom Home of the Year".

www.OldeBulltown.com

New Custom Homes in Chester County
~Lots from the 240s, Homes from the 800s~

Olde Bulltown is conveniently located just 40 miles northwest of Philadelphia, PA

A community by **STOLTZFUS ENTERPRISES LTD.**

For The Home You Deserve



Artfully Crafted Chester Springs

Nestled on 8.8 quiet acres, Venetian plaster walls, 30 foot ceilings; 2 Professional kitchens; radiant heated floors; "floating" study; magnificent Master Suite featuring Master Bath with hand crafted tiles; 3,500 bottle wine cellar; infinity pool, spectacular landscaping. This is truly a "must see to believe" property.



Executive Estate Radnor Hunt

Magnificent, 29 acre, private oasis, in the heart of Radnor Hunt. Protected by deer fence, with magnificent, preserved vistas which extend for miles, a pond, pool, pool house, heliport, large indoor riding ring, abundant turnout, and instant hack out access to miles of scenic trails. This property offers it all.



Large Colonial Devon

Perfectly sited on one of the most desirable streets in Devon is this wonderful home boasts bright, living space, on a full, flat acre, and TE schools. Large Kitchen and Breakfast Room open into the Family Room, with wood-burning fireplace, and Florida Room. Complete with professional Office with Waiting Room, Full Bathroom and outside access. Relax or entertain on the huge Deck with Spa, pool and tranquil stone waterfall.



Historic Farmhouse Chester Springs

Beautifully restored c. 1760 residence, with barn and silo, resting on 15 acre pond. Spectacular views. Grand 2-story Foyer; stunning and generously sized Living and Dining Rooms, each with a fireplace and beamed ceilings. Gazebo, pool and more.



Historic Restoration Malvern

Exquisitely renovated and expanded 1725 Fieldstone farmhouse fuses pre-Constitution stone walls, wood floors and beams, with a modern flair. Open floor plan, high efficiency systems, radiant heat and more. Includes a 1720's restored Cottage, an A-Frame Studio designed by Henry-Soulen, a serene Pool with hill top views, a Pool House and a Garage.



Hill Top Views Chester Springs

This serene and picturesque home site offers 25.6 acres of panoramic views and is situated on one of the most sought-after streets in Chester Springs. Offering opportunity for an ample home, pool, barn, turn out and more. The perfect spot to realize your dreams.



Elegant Colonial Radnor Hunt

Grande residence, perfect for formal entertaining and comfortable family living. Large, professional Kitchen; Breakfast Room with stone wall and fireplace; Family Room with beamed ceiling, stone wall, and fireplace; a Study with built-ins; a Sun Porch; a Florida Room. Over 10,000 ft. of living space. 3.8 acres. 3-car garage.



Picturesque Site Radnor Hunt

Spectacular setting for your dream home, with completely protected vistas, on dry, level ground, elevated over quietly rippling Crum creek. 10 acres offers extremely low taxes, rests on one of the most coveted roads in Willistown and is surrounded by multi-million dollar homes.



Springton Pointe Newtown Square

Imagine gazing out your windows, relaxing on your deck or unwinding at your pool while enjoying spectacular water views...and that's just outside. This wonderful French Colonial also offers a 2-story Foyer, Living Room with antique marble fire place, floor to ceiling windows and large kitchen. Master Bedroom Suite, with high ceilings, marble Master Bathroom and walk in closet. Lower level offers walk-out access to the pool, as well as a Wet Bar, Kitchen, and more.

CONTENTS

VOLUME 37, NUMBER 9 May 2014

COUNTY LINES
MAGAZINE



PHOTO: ALIX COLEMAN



MAY 2014

35

MALVERN BLOOMS
Elana Beckett

37

WARE DECORATOR SHOWHOUSE

42

WHAT'S NEW IN WAYNE
Carol Metzker

48

EARTH-FRIENDLY GARDENING
Sara Stevenson, Mt. Cuba Center

50

DEVON HORSE SHOW
Devon Style and Horse Show Schedule

60

GALLERY ROUND UP

64

THE SEASON FOR STEEPLECHASE
Lauren Klosinski

69

HOME & GARDEN TOUR GUIDE

77

LANDSCAPE & DESIGN

78

HOME OF THE MONTH
Laurel Anderson

82

SUMMER IN A GLASS
Jane Gallagher

85

DINING OUT: Amani's BYOB
Lise Monty

91

BRANDYWINE TABLE: Main Dish Salads
Laura Muzzi Brennan

DEPARTMENTS

18 BEING WELL
21 GOOD TO KNOW
23 OF SPECIAL NOTE

24 BEST LOCAL EVENTS
38, 41 THEATER SPOTLIGHTS
Woody Sez; Million Dollar Quartet

89 FOOD NEWS
97 WISH YOU WERE THERE
98 INDEX

Cover photo by Alix Coleman



Lorna Isen, MBA, Realtor, e-Pro
Hall of Fame Member of Chairman's Club
Long & Foster Real Estate, Inc.
355 Lancaster Avenue, Suite 100 • Haverford, PA 19041

Lornalsen.com • Lorna@Lornalsen.com
Cell: 610.812.4600 • Office: 610.658.8900 • Direct: 610.658.8922



Information deemed accurate,
but not guaranteed

What's New In Allergy Treatment

Michael A. Hoffmann, M.D.

After this past winter, be prepared for the spring allergy season—the pollen vortex.

Allergies are one of the most common and costly health problems in our country. They affect 25 percent of Americans, with sales of allergy medications exceeding \$5 billion annually.

Although most of us are all too familiar with allergies, here's a quick refresher. Allergies are chronic conditions resulting from our immune systems overreacting to a substance in our environment—an allergen that's inhaled, swallowed, injected or absorbed through the skin. Our immune system identifies the allergen—such as tree, grass and weed pollen (seasonal allergens) or dust, mold and pet dander (perennial allergens)—as an “enemy invader” and initiates a cascade of events that cause inflammation and other symptoms.

The most common allergy symptoms are those of classic hay fever—sneezing, runny nose, nasal stuffiness and itchy, watery eyes. But allergies can also cause less obvious symptoms such as chronic sinus problems, post-nasal drip, head congestion, frequent “colds,” hoarse voice, eczema, recurring ear infections, hearing loss, dizziness, chronic cough and asthma. Symptoms may be seasonal or year-round.

Start with Standard Treatments

Control of irritating allergy symptoms is most successful using multiple approaches simultaneously, such as minimizing exposure to allergens, desensitization with allergy shots or drops, and medi-

cations. When used properly, medications (including antihistamines), steroid sprays, and saline irrigation can be helpful.

For more severe symptoms, a visit to a specialist may help. An Otolaryngologist (ear, nose, and throat or ENT specialist) typically evaluates an allergy sufferer by gathering a detailed history and examining the ears, nose, throat and head to offer advice on proper environmental control. ENT specialists may also evaluate the sinuses to determine if an infection or abnormalities (deviated septum, polyps) are contributing to the symptoms.

Allergy testing—the next step—requires a simple blood test or skin testing, which is more accurate. You'll be happy to learn that skin testing is now much simpler, less time consuming and less painful than it used to be.

Newer Treatments

One of the more effective treatments for allergies is Immunotherapy—allergy shots or oral drops. These treatments work by making the sufferer less reactive to allergens over time, with the goal of ultimately eliminating symptoms when exposed to allergens.

An exciting new treatment is using allergy drops or sublingual immunotherapy (SLIT). SLIT is an alternative to the classic allergy shots and involves placing a drop of liquid under the tongue at home. SLIT has been proven effective in several large studies and has been available in Europe for some time now. It's an excellent option for people who can't come into the office for weekly shots. (Plus it carries less risk of anaphylaxis—severe allergic reaction that can result in death. In the millions of sub-lingual doses given so far, no deaths were reported.) Side effects of SLIT can include itchy mouth and tingling in the throat.

Look for new oral medications treating specific allergens—such as grass, ragweed and dust—that may also be available soon in the U.S. Several pharmaceutical companies are in the process of developing these medications for use in this country.

Although most allergies merely cause nuisance symptoms, they can still result in significant medical problems affecting your quality of life. With exciting new treatments available now and new therapies to come, there's hope for a less irritating allergy season. The first step in treatment is finding a provider to direct you down the right symptom-free path. ♦

Dr. Hoffmann, a board certified Otolaryngologist-Head & Neck Surgeon and member of the American

Academy of Otolaryngology-Head & Neck Surgery, has a special interest in allergy and rhinology, head and neck cancer, ear disorders and hearing problems. A member of Pinnacle ENT Assoc., he's on staff at several area hospitals and sees patients throughout Chester County. Visit PentaDocs.com.



CELLARIUM®
Wine Racking

Fine Wine Cellars

- Design
- Manufacturing
- Installation
- Refrigeration Systems

For a free brochure or consultation, call 610-314-6476 or email info@cellarium.com.

Visit us at Booth #15 at the Devon Horse Show & Country Fair

shopatpolkadots.com

polka•dots
A Fun and Flirty Boutique

PAOLI SHOPPING CENTER
29 Leopard Road
Paoli, PA 19301
610.640.2714

Photography by Brenda Carpenter

DEVON

HORSE SHOW & COUNTRY FAIR

FOR THE BENEFIT OF BRYN MAWR HOSPITAL

THURSDAY, MAY 22 - SUNDAY, JUNE 1, 2014

MARCH 2012
BEST
— of the —
MAIN LINE &
WESTERN SUBURBS
FAMILY EVENT



CAROUSEL
HORSES
& lemon sticks
On a sunny
spring day
HUNTERS
JUMPERS
CARRIAGES
SADDLEBREDS
AND HACKNEYS
Thrill in the
Dixon Oval
MIDWAY
RIDES & GAMES
Fantastic Food
GREAT SHOPPING



Photos: Brenda Carpenter Photography

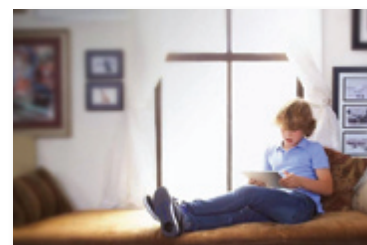
THERE'S
SOMETHING FOR
EVERYONE
AT DEVON.



TICKETS/INFO AT WWW.DEVONHORSESHOW.ORG OR 610-964-0550.

Good to Know

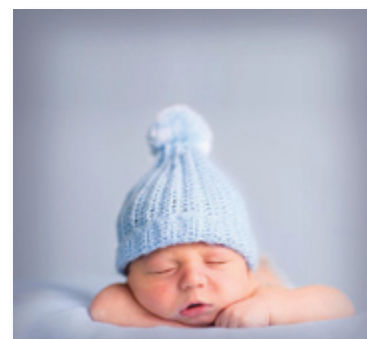
Just a few things we thought
you'd like to know this month



Netflix for Kids' Books.

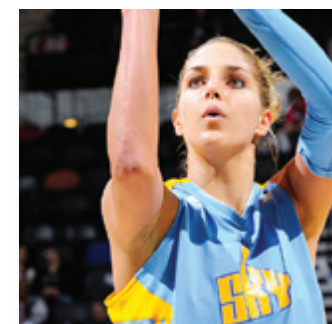
Kids these days are glued to their iPads. That's a fact. But now there's a way to use the power of

iPads to get kids to love reading. For \$9.99 a month, **Epic!** gives kids all-you-can-read access to more than 2,000 children's titles to stream on their iPads (iPad 2 or later). Kids can keep track of their reading times, create their own libraries and even get rewarded with badges for finishing chapters and extended reading times. Read more at GetEpic.com.



Great Expectations. Chester County Hospital is opening its new **Mother and Baby Pavilion** in May with 24 private rooms set up on the second floor of Lasko Tower. The Labor and Delivery Unit and CHOP-affiliated Level III Neonatal Intensive Care Unit are conveniently located on the same floor. With private bathrooms, sofas that convert into a bed for Dad, and comfy gliders, the Pavilion was made with baby, Mom, and visitors in mind—a total family experience. Learn more at CCHosp.com.

Delle Donne Does Delaware. If you haven't heard, Wilmington native **Elena Delle Donne**, the 6'5" **WNBA 2013 Rookie of the Year**, is playing for the Chicago Sky in the first-ever WNBA preseason game in Delaware. Head to the Bob Carpenter Center at University of Delaware—Delle Donne's alma mater—on May 13 at 7 p.m. to cheer on the Sky as they face the Washington Mystics. See more at WNBA.com.



Busy Bees.

Although it's best to avoid swarms of buzzing bees, you can get up close and personal safely with them on **Open Hive Day**. Buzz on over to the **New Leaf Eco Center** in Kennett Square on May 17 from 10:30 to 12 to learn about bees and watch The Land Conservatory for Southern Chester County apiarist, Dan Borkoski, jump inside the world of bees. No worries—protective veils are available. Can't make Open Hive Day? Check out Inside the Hive, coming this summer. More at TLCforSCC.org.



Beer and ... Goats?

Ever been to a goat race? That's right. Owners will bring their goats to compete in the 14th annual **Sly Fox Bock Festival & Goat Race**. A maibock is tapped right after the race and named in honor of the winning goat. Don't worry if you don't have your own goat. Watch the race and drink beer said to be from the largest offering of bock-



style beers by any U.S. brewery at one time. Pikeland Village Square, 519 Kimberton Rd., Phoenixville. May 4, 11 to 6. Registration \$25/goat. SlyFoxBeer.com.

Quiet Family Compound *Knoxville, Tennessee*



You will find unsurpassed peace and quiet on this property located near Knoxville, Tennessee.

Enjoy the majestic views of the Smoky Mountains, which are only an hour away. This is truly private country living, yet only 15 minutes from the Turkey Creek retail center, restaurants, schools, and other conveniences. The 400-plus-acre property features rolling pastureland, woods, 2 ponds, and lots of wild game.

The property includes the main house covering about 7,000 square feet of space, 5 bedrooms, 5 1/2 baths, 2 fireplaces, 2 car attached garage and a 2 car carport. Four additional homes for extended family or rental income.

The stable features 10,000 square feet, 12 horse stalls, 2 wash bays, laundry room, air conditioned tack room, office with its own bathroom, and a 3 bedroom upstairs apartment.

Appointment required for your private tour. CALL: 865-588-6250

All prices, plans, specifications, renderings, subject to change at the sole discretion of the property owner. All dimensions and acreage amounts are subject to verification by the Purchaser.



of Special Note



MidAtlantic Wine & Food Festival

May 14-18

Take part in this culinary journey in and around the Brandywine Valley, in private homes of distinction, stately hotels, award-winning restaurants, elegant

barns and dramatic public spaces. Benefits local organizations in Delaware. For schedule of events and tickets, visit MAWFF.org.

Chester County Studio Tour

May 17-18

"Engage with the Arts" is the slogan for this tour, which includes 77 artists in 34 studios across Chester County. Many studios will feature artists demonstrations and works-in-progress. The artists will be grouped together to highlight their diversity of mediums.

Sat., 10 a.m. to 6 p.m.; Sun., 11 a.m. to 5 p.m. Free. Phone 610-492-9629 or, download a map, at ChesterCountyStudioTour.com.



Vox Ama Deus — Beethoven's Empress

May 16



Beethoven wrote only five piano concerti, each a masterpiece of intensity. A fitting grand finale to Season 27, with soloists, chorus and orchestra. Featured will be the *Coriolan Overture, Op. 62, Piano Concerto No. 3* and *Missa Brevis*. The Kimmel Center, Perelman Theater, Broad & Spruce St., Philadelphia. 8 p.m. Tickets \$20-\$70. 610-688-2800; VoxAmaDeus.org.

Brandywine River Museum Antiques Show



May 23-26

Outstanding dealers from across the nation present American and English furniture, glass, ceramics, folk art, quilts, Oriental and European porcelain, rugs and fine collectibles at the 43rd Annual Antiques Show. Benefits the Museum Volunteers' Art Purchase Fund. Rt. 1 at the Museum, Chadds Ford. Preview Fri., 6 to 9 p.m., cocktails, hors d'oeuvres, music, \$125; res. required, phone 610-388-8318. Show hours: Sat.-Mon., 10 a.m. to 5 p.m. \$15. 610-388-2700; BrandywineMuseum.org.



Canine Partners for Life "Unleashed & Uncorked"

May 10

It's time to party your paws off at CPL's signature fundraiser featuring al fresco dining, delicious canine-themed cocktails, dancing and auctions. Canine Partners for Life puppies will be there to play with—what more could you ask for? Suggested attire: Countryside Cocktail Chic. The event will be tented and on the lawn; please choose your footwear accordingly. Heartwood Farm, 912 Providence Rd., Newtown Square. 7 to 11 p.m. \$100. 610-869-4902; K94Life.org.

best Local Events

NOTEWORTHY THIS MONTH

THROUGH MAY 18

Sunset Boulevard. Andrew Lloyd Webber's musical based on the 1950 film about Norma Desmond. Media Theatre for the Performing Arts, 104 E. State St., Media. Call for curtain times. \$25-\$42. 610-891-0100; MediaTheatre.org.



MAY 2-4

Brandywine Ballet Presents "Beauty and the Beast." The traditional fairy tale adapted for ballet. Emilie K. Apslundh Concert Hall, 700 S. High St., West Chester. Fri, 10 am, \$10-\$18; Sat, 4 pm; Sun, 2 pm. \$25-\$40. Enjoy snacks with the cast at the "Be Our Guest" Tea, Sat., 2:30 pm, \$25. 610-696-2711; BrandywineBallet.org.

FRIDAYS, MAY 2-SEPTEMBER 5

Uptown! Entertainment First Friday Film Series. Planned to coincide with First Friday in West Chester, the series offers an alternative by showing thought-provoking films for the community. **May 2, Mandela: Long Walk to Freedom.** Knights of Columbus Hall, 110 W. Market St. 8:30 pm. \$7.50. 484-639-9004; UptownWestChester.org.



MAY 7-SEPTEMBER 24

Stroll, Shop, Dine—Dining Under the Stars in Media. It's that time of year again when Wednesday is the night to dine out in Media. Restaurants offer outdoor dining along State Street, from Jackson to Orange Sts. There's entertainment and children's activities on each block. 5 to 11 pm. 610-566-5039; VisitMediaPA.com.

ANTIQUES.....

MAY 1-3

Historic East Berlin PA Antiques Show. Dealers from many states offer a wide variety of antiques. Benefits the Historic Preservation Society in this 18th-century town. E. Berlin Area Community Center, 405 North Ave. Thurs, early buying, 5 to 8, \$15. Fri, 10 to 6; Sat, 9 to 3. \$8. 717-308-2158.

ART & CRAFT SHOWS.....

THROUGH MAY 3

ArtQuilt Elements at the Wayne Art Center. An international, contemporary art quilt exhibition benefitting the Center's educational and outreach programs for children and adults. 413 Maplewood Ave., Wayne. Mon-Fri, 9 to 7; Sat, 9 to 4. 610-688-3553; WayneArt.org.

THROUGH MAY 11

Yellow Springs Art Show. With over 180 juried artists and nearly 3,000 pieces of original artwork to view, there's surely something for everyone to enjoy. 1685 Art School Rd., Chester Springs. Daily, 10 to 4; Fri, until 8. Free. 610-827-7414; YellowSprings.org.

THROUGH MAY 31

Reading Fiber Arts Gallery's Some Things Looming Presents "Me, Myself & I." Participating artists were challenged to use fiber or fiber techniques to create a self-portrait. 526 Washington St., Reading. Tues-Wed, 11 to 2; Sat, 10 to 3. Thurs-Fri, by appointment. 610-373-7337; SomethingsLooming.com.

THROUGH JUNE 22

Wharton Esherick Museum Presents "Wharton & Henry: An Inspiring Pair." The exhibit brings together works of Wharton's furniture with Henry Varnum Poor's ceramics. 1520 Horse Shoe Trail, Malvern. \$6-\$12. Phone for reservations, 610-644-5822; WhartonEsherickMuseum.org.

MAY 2

Gallery Walk in West Chester. See Art Gallery Round Up in this issue.

MAY 4

May Day Festival of the Arts in West Chester. A celebration of the arts with music, art, crafts and kids' activities at Everhart Park, 100 S. Brandywine St., West Chester. 11 to 4. Free. 610-436-9010; West-Chester.com.

MAY 4

Conscious Creations Art Show & Sale. Support local artists and have a day of creative family fun. Ceramics, jewelry, fine art, photography, clothing and more for browsing and buying. The Desmond Hotel, 1 Liberty Blvd., Malvern. 9 to 4. Free. 484-889-8668.

MAY 9

George Rothacker Show "New York in the Thirties," Benefits Church Farm School. A '30s-themed Gala to premier new paintings by local artist George Rothacker, will include cocktails, dinner and a performance by the Church Farm School choir. High Point at St. Peter's Church in Great Valley, 2475 St. Peter's Rd., Malvern. 6:30 to 9:30. \$150. 610-363-5383; NewYork1930s.com.

MAY 9-11

PA Guild of Craftsmen Fine Craft Fair. The Guild's signature premier fine craft fair, featuring 140 of its very finest artists. Rittenhouse Square, 19th & Walnut Sts., Philadelphia. Fri-Sat, 11 to 7; Sun, 11 to 5. Free. 717-431-8706; PACrafts.org.

MAY 9-JUNE 6

Main Line Art Center Presents "Jewels & Treasures: A Fine Art and Jewelry Exhibition and Benefit." A stunning exhibition of professional, affordable visual works of art.

Preview Party, **May 9**, 7 to 10, \$150-\$200. Benefits the Center. 746 Panmure Rd., Havertford. Mon-Thurs, 9 to 9; Fri-Sun, 9 to 5. Free. 610-525-0272; MainLineArt.org.

MAY 13-JUNE 28

Wayne Plein Air Art Festival. See Art Gallery Round Up in this issue.

MAY 17-18

Chester County Studio Tour. See Art Gallery Round Up in this issue.

MAY 31

Art From the Heart Gala. A fundraising event and gala hosted by four area organizations. When you purchase a ticket you'll receive a playing card that entitles you to take home a piece of art. Phoenix Village Art Center, 207 Bridge St., Phoenixville. 6:30 to 9:30 pm. \$75. ArtFromTheHeartGala.blogspot.com.

DESIGN, HOME SHOWS.....

THROUGH MAY 31

Bucks County Designer House & Gardens. Regional designers display their creativity in interior and landscape design at Serendipity Farm, a 245-year-old farmhouse in Bucks County. 131 Pine Mill Circle, Doylestown. Mon-Wed, 10 to 4; Thurs-Fri, 10 to 7; Sat, 10 to 4; Sun, noon to 4. \$25. 215-345-2191; BucksCountyDesignerHouse.org.

MAY 3-JUNE 1

Community Art Center Designer Show House. The house is located in downtown Swarthmore, close to the center of town. Benefits the Art Center. Wed, Fri, Sat, 10 to 5; Thurs, 10 to 8; Sun, noon to 5. For information, 610-566-1713; CACDesignerHouse.org.

MAY 18-JUNE 7

Ware Decorator Showhouse & Gardens. See article in this issue.

EQUESTRIAN.....

See the Devon Horse Show and Steeplechase articles in this issue.

MAY 10-11

Horse Trials at Plantation Field. **May 10**, May Horse Trials—top riders compete in the sport known as "eventing," a mix of dressage, cross country and show jumping. 387 Green Valley Rd., 2 mi. N of Unionville, off Rt. 82. 610-347-2024; PlantationFieldHorseTrials.com.

FAMILY FUN.....

ONGOING

Delaware Nature Society Programs. From kayaking to cooking, hiking and fitness to birding and botany, you'll find a program for every season at one of their locations: Ashland Nature Center, Coverdale Farm Preserve, DuPont Environmental Education

Center and area preserves. DelawareNatureSociety.org.

THROUGH SEPTEMBER 1

Morris Arboretum Debuts "Home Tweet Home" Designer Birdhouses. More than 30 birdhouses, crafted by artists and bird lovers of all kinds are on display. 100 E. Northwestern Ave., Phila. Mon-Fri, 10 to 4; Sat-Sun, 10 to 5. \$8-\$16. 215-247-5777; MorrisArboretum.org.

MAY 2-4

Greater Reading Pet Expo. Bring the family (and pets) to the Reading Fairgrounds and

enjoy the dog arena, petting zoo, pony rides and more. 4-H Center, Hilltop Rds., Leesport. Fri, 2 to 7; Sat, 10 to 7; Sun, 10 to 5. \$10. 800-677-4677; FamilyPetShows.com.

MAY 3

Hagley Museum's NatureFest. The theme this year is the power of wind—its importance from pollination to creating energy. Buck Rd. entrance off Rt. 100, Wilmington. 10 to 4. \$5. 302-658-2400; Hagley.org.

MAY 31-SEPTEMBER 1

Morris Arboretum's Garden Railway. This year's theme is "Who Lives Here?" challenging

Eleven Extraordinary Attractions, One Low Price.



Brandywine Treasure Trail PASSPORT

VALID MAY 25 – SEPTEMBER 1, 2014

BMGA
Brandywine Museums & Gardens Alliance

Greater **Wilmington & Brandywine Valley**
GREATER WILMINGTON CONVENTION AND VISITORS BUREAU
VisitWilmingtonDE.com

BRANDYWINETREASURES.ORG



children to use their imagination. The railway is a miniature world with quarter-mile track in a summer garden. 100 E. Northwestern Ave., Phila. Mon-Fri, 10 to 4; Sat, Sun, 10 to 5; Wed until 8, June-Aug. \$8-\$16. 215-247-5777; MorrisArboretum.org.

FESTIVALS, FAIRS, PARADES.....

THROUGH MAY 3

Philadelphia Science Festival. More than 100 institutions collaborate in this community-wide celebration of science showcasing the impact of science and technology past,

present and future. **May 3**, Science Carnival on The Parkway, with exhibitors offering family-friendly experiments, activities, games and live entertainment. 215-448-1128; PhilaScienceFestival.org.

MAY 4

Malvern Blooms Festival. See article in this issue.

MAY 4

Cinco de Mayo Festival in Kennett Square. A celebration of the arts, culture, cuisine and community in downtown Kennett Square.

Noon to 6 pm. 610-444-8188; HistoricKennettSquare.com.

MAY 12-17

Phoenixville Dogwood Festival. A community festival and parade with lots of activities. **May 17**, Dogwood Parade, 1 pm. Reeves Park Bandshell, 2nd & Main Sts., Phoenixville. Mon-Fri, 6 to 10; Sat, noon to 10. 484-928-0052; PhoenixvilleDogwoodFestival.org.

MAY 26

Downingtown Memorial Day Parade and Ceremony. The parade starts at Beaver Creek Elementary School, 601 W. Pennsylvania Ave., to Kerr Park Veterans' Memorial. 10 am. 484-319-6523.

MAY 26

Media Memorial Day Parade. The parade will travel State Street beginning at 10 am. 610-566-5039; VisitMediaPA.com.

MAY 26

Radnor Memorial Day Parade. The parade begins at the Radnor Financial Center on Rt. 30 and proceeds west. Radnor Fire Company will have a refreshment stand in front of the fire house. 9:45 am. RadnorMemorialDay.org.

MAY 29-JUNE 1

Brandywine Hospital's Annual Strawberry Festival. Rides, entertainment, children's games and activities, craft fair and fireworks display on Friday night. Brandywine Hospital, at Rt. 30 Bypass, Coatesville. Thurs, 5 to 10; Fri, 5 to 11; Sat, 11 to 11; Sun, noon to 6. Benefits the Coatesville Youth Initiative. 610-380-9080; BrandywineStrawberryFestival.com.

MAY 31-JUNE 1

Malvern's Family Fun Days. Be sure to make your way to Malvern this weekend to be part of their 125th Anniversary celebration. **May 31**, the Run for Freedom a 5K, 1 mi. run/walk, 9 am; Kids Run, 9:45, benefitting Wounded Warriors, followed by family games and activities. At 5 pm, enjoy a Spaghetti Dinner, \$10-\$12, then a concert with the Chester County Concert Band at 7. **June 1**, a parade that begins at 1:30 on King Street, with bands, patriotic bike contest then a ceremony honoring veterans. All events this weekend are at Paoli Memorial Grounds on Monument Ave.

JUNE 1

Super Sunday in Downtown West Chester. A huge street festival with children's crafts, games, rides, food vendors, live bands and artisans. Gay St., from Matlack to Darlington St., and High St., from Chestnut to Market Sts. 11 to 5. 610-692-7574; WestChester.com.

Local Farm Markets

Booths Corner Farmers Mkt., 1362 Naamans Creek Rd., Garnet Valley. Fri, 9 to 9; Sat, 9 to 8. 610-485-0775; Booths-Corner.com.

Bryn Mawr Farmers Mkt., Lancaster Ave. at Bryn Mawr train station. Sat, 9 to 1. BrynMawrFarmersMarket.com.

Coatesville Farmers Mkt., Rts. 30 & 82. Sat, 9 to 1. 201-888-8260; Facebook.com/CoatesvilleFarmersMarket.

Collegeville Farmers Mkt., 217 E. Main St. Sat, 9 to 1. 610-454-1050; CollegevilleFarmersMarket.org.

Downingtown Farmers Mkt., Kerr Park, 1 Park La. Sat, 9 to 1. 610-836-1391; GrowingRootsPartners.com.

Eagleview Farmers Mkt., Town Ctr., Wellington Sq. Thurs, 3 to 7. 610-836-1391; GrowingRootsPartners.com.

East Goshen Farmers Mkt., E. Goshen Park, 1580 Paoli Pk. Thurs, 3 to 7. EastGoshenFarmersMarket.blogspot.com.

Kennett Square Farmers Mkt., downtown. Fri, 2 to 6. 610-444-8188; HistoricKennettSquare.com.

Lancaster County Farmers Mkt., 389 W. Lancaster Ave., Wayne. Wed, Fri, 8 to 6, Sat, 8 to 4. 610-688-9856; LancasterCountyFarmersMarket.com.

Malvern Farmers Mkt., Burke Park, Roberts Rd. & S. Warren Ave. Sat, 9 to 1. 610-836-1391; GrowingRootsPartners.com.

Media Farmers Mkt., State St. b/w Monroe & Gayley. Thurs, 3 to 7. 610-566-5039; MediaFarmersMarket.com.

Newtown Square Farmers Mkt., Mostardi Nursery, 4033 West Chester Pk. **June-Dec.**, Wed, 2 to 6. 610-353-1555; PRC.org.

Oxford Village Mkt., 3rd & Locust Sts. **May-Oct.**, Tues, 2 to 6. 610-998-9494; DowntownOxfordPA.org.

Phoenixville Farmers Mkt., 200 Mill St., under Gay St. Bridge. Sat, 9 to 1. PhoenixvilleFarmersMarket.org.

Swarthmore Farmers Mkt., 341 Dartmouth Ave., at Swarthmore Co-Op. Sat, 10 to 2. FarmToCity.org.

Upper Merion Farmers Mkt., 175 W. Valley Forge Rd. Sat, 9 to 1. 610-265-1071; UpperMerionFarmersMarket.org.

West Chester - Artisan Exchange Indoor Artisan Foods & Farmers Mkt., 208 Carter Dr. Sat, 10 to 2. ArtisanExchangeWCPA.com.

West Chester Growers Mkt., Chestnut & Church Sts. Sat, 9 to 1. 610-436-9010; WestChesterGrowersMarket.com.

JUNE 1

146th Annual Malvern Memorial Parade. The parade begins at 1:30, followed by a Cake Walk—winners get to take a cake home. Sponsored by Paoli Valley Preservation for Battle of Paoli. MalvernMemorialParade.com.

JUNE 3-7

Annual Greek Festival at Holy Trinity Greek Orthodox Church. It's a bit of Greece as you enjoy the wonderful food, dancing, musical entertainment and culture at this popular festival. 808 N. Broom St., Wilmington. Daily 11 to 11. 302-654-4446; GreekFestDE.com.

JUNE 5-SEPTEMBER 4

Swingin' Summer Thursdays in West Chester. Great food, live music, clowns, artists, magicians, jugglers and more. Gay St., the first Thurs. of the month. 6:30 to 9:30. 610-436-9010; DowntownWestChester.com.

JUNE 7

Historic Newtown Square Day. A community celebration with vendors, games, an outdoor market, tours of historic sites and private properties. Festivities at Square Tavern, Rt. 252 & Goshen Rd., Newtown Square. 10 to 4. \$6. 610-975-0290; HistoricNewtownSquare.org.

Your life revolves around your home. Our business revolves around you.

"The Roost" is the Quintessential Chester County Stone Farmhouse on 24 +/- acres in the heart of Chester Springs, PA. In addition to the inviting Home, you will find a Spring House, two 2 car stone bank Garages, a 2 car + equipment Shed, a large stone Bank Barn and a lovely pond with fountain. The former Summer Kitchen is attached to the house by a wonderful indoor Pool. This is the property for enjoying your home year around! A property well groomed and ready for you! For more details: TruPlac/property/1058/27687



Why not come home to "Yellow Springs Farm" one of the premier Gentleman's Equestrian properties in Chester Springs, PA. From the lovely stone 3 story Manor House, the stone patio with Koi pond and the lighted gazebo to the stone and frame Bank Barn, the gently rolling pastures, the riding ring overlooking the large pond with fountain, not a bit of maintenance has been deferred. Miles of trails are accessible from this 28 +/- acre property. For more details: 1346Village.go2fr.com



Fox & Roach, REALTORS®

Exton Home Marketing Center • 232 Eagleview Boulevard
(484) 875-2559 • (484) 875-2600

Jeanie Pecknoe
Cell 610-662-4668 | Direct 484-875-2529
Jeanie.Pecknoe@FoxRoach.com

Joan Franklin
Cell 610-662-2901
Joan.Franklin@FoxRoach.com

VoxAmaDeus

Valentin Radu, Artistic Director & Conductor

Concert Season 27

Friday, May 16 at 8 PM | Kimmel Center, Philadelphia

Ama Deus Ensemble
Valentin Radu, Conductor

BEETHOVEN'S Empress

Piano Concerto 3 & Missa Brevis

www.KimmelCenter.org 215.893.1999
www.VoxAmaDeus.org 610.688.2800



custom shutters add
beauty & elegance
to your home

View Master shutters are designed and manufactured to custom-fit any window. Built with high structural integrity to last a lifetime. **View Master** shutters are virtually maintenance free. They are engineered with a recyclable wood substitute that is environmentally friendly and far superior to wood.

NO Fading | NO Discoloring
NO Warping | NO Cracking

View Master shutters are custom-built in our West Chester Factory.

FACTORY DIRECT PRICES
because we are the factory
WE WILL BEAT ANY PROVIDERS PRICE! JUST BRING US YOUR ESTIMATE!

We also specialize in wood blinds, woven woods, pleated shades and roller shades by **Hunter Douglas** and **Graber**.

SHOP AT HOME SERVICE
FREE ESTIMATES
We service PA, NJ, DE & MD

Visit our factory and showroom
Monday-Thursday
from 8:30AM - 4:00PM

ShutterTech, Inc
40 years in business



Great Option For Your Sliding Or French Doors



www.shuttertech.com
Park Valley Corporate Center
1155 Phoenixville Pike, Suite 105 • West Chester
800-272-9934
610-696-9322
shuttertech@shuttertech.com

FOOD & DRINK.....

MAY 6-14

Culinary Classes at Wayne Art Center. *May 6*, demonstration and tasting with Michele Haines of Spring Mill Café, 6:30, \$50. *May 14*, “Cooking with Wine: Springtime in Provence,” 6:30, \$65. 413 Maplewood Ave., Wayne. 610-688-3553; WayneArt.org.

MAY 10

2014 Philadelphia Food & Fine Festival. Sample unique and high-end wines, perfectly fused with gourmet food from the region’s best restaurants. Benefits The Children’s Hospital of Phila. Simeone Fdn. Automotive Museum, Phila. \$110-\$225. VIP entry at 5; general tasting, 6:30 to 9 pm. 215-940-4605; FineWineAndGoodSpirits.com.

MAY 10

6th Annual BrewFest at Mount Hope. Music, food and all that is ale. Two sessions: 11 am to 3 pm and 4:30 to 8:30 pm. Benefits Central PA Food Bank. Mt. Hope Estate & Winery, 2775 Lebanon Rd., Manheim. \$40 in advance; \$45 at the gate. 717-665-7021; PARenFaire.com.

MAY 24-25

The Great PA FlavorFest at Mt. Hope. Wineries provide complimentary samples of their most popular vintages, and food and craft vendors showcase their wares. Mt. Hope Estate & Winery, 2775 Lebanon Rd., Manheim. Free. 717-665-7021; PARenFaire.com.

MAY 30-JUNE 8

Philly Beer Week. More than 500 events at over 100 venues throughout the city and suburbs, highlighting the region’s diverse beer scene, its world-class breweries, neighborhood taverns, restaurants and rich beer culture. For venue information, visit PhillyBeerWeek.org.

JUNE 7

West Chester’s 12th Annual “Up On the Roof.” Live entertainment, delicious appetizers, light dining and desserts. Open bar offers beer, wine and the famous Rooftop Martini. Benefits the beautification of the downtown area. Chestnut Street Garage, West Chester. 7 to 11. \$90 in advance; \$125 at door. 610-738-3350; DowntownWestChester.com.

JUNE 7

Longwood’s Wine & Jazz Festival. Live jazz, fine wines and local fresh fare. This year the festival is expanding to a garden-wide experience with performances on multiple stages throughout the Gardens. 1001 Longwood Rd., Kennett Square. \$25-\$40. 12 to 5:30. 610-388-1000; LongwoodGardens.org.

FUNDRAISING EVENTS.....

MAY 3

Chester County Hospital Gala. This year’s gala celebrates the Kentucky Derby with a live broadcast of the Run for the Roses, a Triple Crown dining experience and food and beverages from the Belmont Stakes, Preakness and the Derby. Longwood Gardens, 1001 Longwood Rd., Kennett Square. 6 pm. \$175-\$275. 610-431-5329; ChesterCountyHospital.org.

GARDENS & PLANT SALES.....

See Home & Garden Tours in this issue.

MUSEUMS.....

THROUGH MAY 18

Brandywine River Museum Exhibits. “A Date with Art: The Business of Illustrated Calendars,” featuring Howard Pyle, Maxfield Parrish, Norman Rockwell and N.C. Wyeth. Rt. 1, Chadds Ford. \$6-\$12. Free Sunday mornings, 9:30 to noon. 610-388-2700; BrandywineMuseum.org.

THROUGH MAY 26

Delaware Museum of Natural History Exhibit. “Charlie & Kiwi’s Evolutionary Adventure” explores evolution and the connection between dinosaurs and birds. Unravel puzzles, play games and get up close with live birds. 4840 Kennett Pk., Wilmington. Mon-Sat, 9:30 to 4:30; Sun, noon to 4:30. \$7-\$9. 302-658-9111; DelMNH.org.

THROUGH JULY 6

Demuth Museum of Art Exhibit. “James Warhola: Visiting a Pop Icon.” 120 E. King St., Lancaster. Tues-Sat, 10 to 4; Sun, 1 to 4. Free. 717-299-9940; Demuth.org.

THROUGH JANUARY 2015

Winterthur Museum, Garden & Library Presents “Costumes of Downton Abbey.” Forty costumes and accessories, worn on the period drama television series, will be displayed in Winterthur’s galleries. Among the highlights: Lady Sybil’s harem pants, Lady Mary’s engagement dress and Lady Edith’s wedding dress. Rt. 52, Wilmington. Tues-Sun, 10 to 5. \$5-\$18. 302-888-4600; Winterthur.org.

MAY 9, JUNE 13, JULY 18

Delaware Art Museum’s Art is After Dark. Stroll the galleries and enjoy music, dinner and drinks in the café, studio workshops, films, games and more. *May 9*, “Film & Fashion;” *June 13*, “Battle of the Bands;” *July 18*, “Performance Art.” 2301 Kentmere Pkwy., Wilmington. 6 to 10 pm. Members free; non-members, \$10. 302-571-9590; DelArt.org.



Devon

Construction Management, LLC

*“UNCOMPROMISING
COMMITMENT TO QUALITY”*

- Residential Additions and Renovations
- Commercial Additions & Renovations
- Custom and Semi-Custom Cabinetry & Millwork

Todd A. Majors, President

1331 Pikeland Road, Chester Springs, PA 19425

P: 610-827-1635 F: 610-827-1637 C: 610-291-0862

tmajors@devonconstructionmanagement.com

www.devonconstructionmanagement.com



MUSIC, ENTERTAINMENT.....

THROUGH NOVEMBER

2nd TUESDAY OF THE MONTH

West Chester Story Slam. A monthly event where anyone can take the stage and tell a five-minute true story based on the theme. No notes, props or music allowed. Side Bar & Restaurant, 10 E. Gay St., West Chester. 8. \$8. 610-429-8297; SideBarAndRestaurant.com.

MAY 2, 17

Point Entertainment Presents at The Colonial Theatre. *May 2*, Think Pink Floyd tribute band with special guest AfterImage, a tribute to Rush, 8 pm, \$15-\$29.50. *May 17*, One Night Only Comedy and Variety Festival, 8 pm, \$20. 227 Bridge St., Phoenixville. 610-917-1228; TheColonialTheatre.com.

MAY 3

Chester County Choral Society Presents *Carmina Burana* by Carl Orff. Bayard Rustin High School, 1100 S. Shiloh Rd., West Chester. 7:30 pm. \$5-\$15. ChesterCountyChoralSociety.org.

MAY 4

Chester County Concert Band Presents “Spring at Last.” A wide variety of music including pop, classical, Broadway hits, marches, swing and more. Fugett Middle

School, 500 Ellis La., West Chester. 2:30. \$7-\$10; under 12, free. 484-639-9118; CCCBand.org.

MAY 10

West Chester Area Community Chorus. The annual spring concert features a variety of music for all musical tastes. West Chester East High School, 450 Ellis Ln., West Chester. 7 pm. \$5. 610-357-1617; WestChesterChorus.org.

MAY 15

Music on the Brandywine at the Brandywine River Museum. Enjoy a performance by The Jasper String Quartet, with full bar and small plate offerings available for purchase. Rt. 1, Chadds Ford. Galleries open at 6; concert, 7:30. \$6-\$25. 610-388-8326; BrandywineMuseum.org.

MAY 31

Brandywine Singers Concert. “In the Beginning: Songs of Creation” performed at Calvary Lutheran Church, 730 S. New St., West Chester. 7:30. For tickets visit, BrandywineSingers.org.

OUTDOOR ACTIVITIES.....

MAY 3

19th Annual Trout Rodeo. Ponds at the park will be stocked with trout up to 22-inches.

Breakfast and lunch for sale. PA fishing license req. for fishermen 16+. Benefits Anson B. Nixon Park, N. Walnut St. 8 to 4. Tickets at Buck's Hunting, 809 Gap-Newport Pk., Avondale. \$10. 610-444-0792; AnsonB.NixonPark.org.

MAY 3
Justice4PAKids 5K Run and 1 Mi. Fun Run/Walk. Come out for a great cause. Prizes for 1st, 2nd and 3rd place, t-shirts for all and free refreshments. Chester County Trail, 140 Church Farm La., Exton. 8 am. \$25. Justice4PAKids.com or RunCCRS.com.

MAY 3
Walk MS—Greater Delaware Valley Chapter. Eight sites in the extended area host a walk, including the Philadelphia Art Museum on this date. Funds raised give hope to the 14,000 people living with MS in our chapter area. To register or find other locations, visit WalkPaE.NationalMSSociety.org.

MAY 4
35th Annual Blue Cross Broad Street Run. A picturesque 10-mile course starting at Broad St. & W. Fisher Ave. and finishing inside the Phila. Navy Yard. Benefits the Amer-

ican Cancer Society. 8:30 am. Registration, individual, \$43; team, \$250. 215-683-3594; BroadStreetRun.com.

MAY 9-10
The Aberdeen Dad Vail Regatta. This event hosts thousands of student athletes who join in the largest collegiate rowing competition in the country. Schuylkill River, parking along Kelly Drive and in remote parking areas with shuttle service. 215-542-1443; DadVail.org.

MAY 10
Kids Fishing Rodeo at Warwick County Park. Spend a beautiful spring day at the park fishing for trout. Co-sponsored by the Coventryville Trout Club. 191 County Park Rd., Pottstown. Registration, 8:15 am. \$5. 610-344-6414; Chesco.org/CCParks.

MAY 15
Wine, Blooms and Tunes at Tyler Arboretum. Sample wines, listen to music and take a stroll through Tyler's blooming lilacs. 515 Painter Rd., Media. 8 pm. Pre-register, \$25. 610-566-9134; TylerArboretum.org.

MAY 17-18
American Cancer Society Relay For Life. The 20th Anniversary celebration for Relay For Life of Central Chester County, raising money for cancer research, programs and services. **May 17**, a Survivor Celebration Lap at 6 pm and Luminaria Ceremony at 9. Downingtown West High School, 445 Manor Ave., Downingtown. 10 am Sat through 10 am Sun. 888-202-1487; RelayForLife.org/paccc.

MAY 17
13th Annual Malvern Federal Savings Bank Berwyn Victory Run. Sponsored by the Veterans Assoc. of Easttown & Tredyffrin Twps. Race begins and ends at Johnson Park, Bridge & First Aves., Berwyn. Registration, 7:30 am; race, 8:30; Kids Fun Run, 9:15. \$25. Berwyn-VeteransMemorial.com.

MAY 17
"Small Town...Big Race...Strong Community" 25th Annual Kennett Run. The race begins downtown and finishes in Anson B. Nixon Park. Events for all age groups, including a 10K and 5K run, a PowerRun Lifting Competition and a 1-mile Fun Walk. Race at 9 am. Post-race party with refreshments, music and awards. Benefits local charities. For registration information phone 610-388-1556 or visit KennettRun.net.

MAY 17-SEPTEMBER 13
Schuylkill River Pedal and Paddle. Take a 4.5 mile bike ride from Pottstown's Riverfront Park to Historic Morlatton Village in Douglassville on 5 Saturdays: **May 17, June 28, July 26, Aug. 23 and Sept. 13.** Lunch, bikes, kayaks and all kayaking gear

Unmatched
excellence
in academics,
the arts, and
athletics...
Because you
shouldn't have
to choose.



The Episcopal Academy

An Independent Pre-Kindergarten through 12th Grade Day School for Boys and Girls

1785 Bishop White Drive
Newtown Square, PA 19073

www.episcopalacademy.org



ENROLLING NOW FOR 2014-2015 SCHOOL YEAR!



INNOVATIVE. ACCREDITED.
EXPERIENCED.

PA Cyber is a tuition-free public school offering students in grades K-12 an innovative, high-quality education using the latest technology, accredited courses, and experienced, state-certified teachers.

1553 Chester Pike, Ste. 103, Crum Lynne, PA
f PACYBER.ORG | 1.888.722.9237

Agnes Irwin

OPEN THE DOOR



Selectively enrolling more girls than any other independent school in the Philadelphia region.

Visit and discover why!

www.agnesirwin.org

The Agnes Irwin School, Ithan Avenue & Conestoga Road, Rosemont, PA

Excellence Starts Early

High-quality early care and education play an important role in preparing children for success and lead to higher levels of educational attainment, career advancement and earnings.

- The Annie E. Casey Foundation



Wilmington
Friends 1748 School



302.576.2930 • www.wilmingtonfriends.org

2014

Malvern

PREPARATORY SCHOOL

SUMMER PROGRAMS

Co-Ed Programs for Grades 2 - 12




Academics Sports Fun!

REGISTER ONLINE AT:

malvernprep.org/SummerPrograms


LAYTON PREP



active learners confident self-advocates

Layton Preparatory School expands educational opportunities for students who may have learning differences, challenges with organization, social anxiety or those who prefer a small school atmosphere that focuses on the academic needs of the individual.

We offer a student: teacher ratio of 7:1. We serve grades 9-12. Please visit our open house held on the first Wednesday of every month from 8:30-10:00am.

 6201 Kennett Pike Centreville, DE 19807
(302) 655-3280 LaytonPrep.org

THIRTY-FIRST ANNUAL *demuth* HOUSE & GARDEN TOUR

THE DEMUTH MUSEUM'S LARGEST ANNUAL FUNDRAISER
CELEBRATES ITS 31ST ANNIVERSARY THIS YEAR!

SATURDAY, JUNE 14 10AM - 5PM	SUNDAY, JUNE 15 11AM - 5PM
----------------------------------------	--------------------------------------



TICKETS:
\$15 IN ADVANCE
\$18 DAY OF TOUR

TICKETS ON SALE
MAY 1, 2014
RAIN OR SHINE

120 EAST KING STREET, LANCASTER, PA 17602 (717) 299-9940
MUSEUM HOURS: TUES-SAT 10-4, SUN 1-4 WWW.DEMUTH.ORG

DELAWARE ART MUSEUM

art is after dark



SELECT FRIDAYS EACH MONTH • 6 PM – 10 PM
FREE FOR MEMBERS • \$10 NON-MEMBERS

Stroll the galleries and enjoy music, dinner and drinks in the Thronson Café, performances, adult Studio Workshops, films, games, and more! Visit delart.org for details.

MAY 9 Film & Fashion
JUNE 13 Battle of the Bands
JULY 18 Performance Art

2301 Kentmere Parkway | Wilmington, Delaware 19806
302.571.9590 | delart.org

Photograph by Alessandra Nicole.

Community Arts Center's DESIGNER SHOW HOUSE

PRESENTED BY **MAIN LINE TODAY**

Celebrate Spring with a house and garden tour of

HARVARD HOUSE SWARTHMORE

A country French / Queen Anne style residence built circa 1905. Featuring many of the area's top interior and landscape designers

Open for Tours May 3 - June 1 . Preview Party May 2

Sponsored by





oil and propane

www.cacdesignerhouse.org

are provided. 9 to 2. \$25. To register visit SchuylkillRiver.org.

JUNE 7-13

16th Annual Schuylkill River Sojourn. A 112-mile guided canoe or kayak trip, beginning in Schuylkill Haven and ending in Philadelphia. This year's theme is "Schuylkill River: Pennsylvania's 2014 River of the Year!" Enjoy rapids, songs at the campsites and celebrations in the river towns. 484-945-0200; SchuylkillRiver.org/Sojourn.aspx.

THEATER.....

MAY 7-25

Woody Sez: The Life and Music of Woody Guthrie. See Theater Spotlight in this issue.

MAY 27-JUNE 1

Million Dollar Quartet. See Theater Spotlight in this issue.

TOWNS, BOROUGHES & SPECIAL EVENTS.....

MAY 2, JUNE 6

First Fridays. Stroll through area towns to find exhibits, galleries, restaurant specials, entertainment and extended hours. **Berwyn**, 610-203-4543; BerwynDevonBusiness.com. **Kennett Square**, 610-444-8188; Historic-KennettSquare.com. **Lancaster City**, 717-509-ARTS; LancasterArts.com. **A Main Line ARTitude**, 610-642-4040; FirstFridayMainLine.com. **Oxford**, 610-998-9494; DowntownOxfordPA.org. **Phoenixville**, 610-933-3070; PhxFirstFriday.com. **Wayne**, 610-687-7698; FirstFridayWayne.com. **West Chester**, 610-738-3350; Downtown-WestChester.com; **Wilmington**, 302-576-2100; ArtLoopWilmingtonDE.com.

MAY 2

West Chester Vintage Garage Sale. Live music, food, wine tastings, vintage home goods, clothing, jewelry, art and more for sale. Chestnut St. Parking Garage, 14 E. Chestnut St. 610-436-9010; AVintageGarageSale.com.

MAY 10, JUNE 14

Media's Second Saturdays. Media's version of First Fridays. 610-566-5210; MediaArtsCouncil.org.

MAY 20

History Trivia Night. How much do you know about Chester County's history? Join the staff from Chester County Historical Society who will emcee a fun evening at Barnaby's and award prize baskets to the winners. 15 S. High St., West Chester. 6:30. Free. 610-692-4800; ChesterCoHistorical.org.

TOURS.....

MAY 2-17

Shop Chester County's Best Kept Secrets

Tour. Explore and shop Chester County—30 local, unique businesses are offering special events, games, refreshments and valuable coupons. Visit at your leisure over 16 days. Tickets \$8 (\$1 donated to Chester County Pet Food Pantry). 484-551-5180; ShopChesterCounty.com.

MAY 4

Recipe For Success Kitchen Tour. Tour a variety of stunning kitchens in Wayne for the benefit of Radnor High School Scholarship Fund. Tickets available for pick-up at The Wayne Art Center, 413 Maplewood Ave., on

the day of the tour. 1 to 5. \$35. Visit RadnorScholarshipFund.com. ♦


Stay in the know with everything going on in *County Lines* country. Sign up for our monthly Events Newsletter at Newsletter@ValleyDel.com

Send a description of your activity to Info@ValleyDel.com by the first of the month preceding publication.

For more events visit:

CountyLinesMagazine.com

ELVIS PRESLEY | JERRY LEE LEWIS | CARL PERKINS | JOHNNY CASH





THE TONY® AWARD-WINNING BROADWAY MUSICAL

MILLION DOLLAR QUARTET

INSPIRED BY THE ELECTRIFYING TRUE STORY

DuPont THEATRE | MAY 27-JUN 1 2014
AT THE HOTEL DUPONT

302.656.4401 OR 800.338.0881 | WWW.DUPONTTHEATRE.COM

 MILLIONDOLLARQUARTETLIVE.COM 

It's insured. But is it fully covered?

Truth is, many people don't know the answer about their auto insurance until they're involved in an accident.



HORST
INSURANCE

A local, independent agency

Chadds Ford Office | 610-459-8285
HorstInsurance.com

Life is full of unexpected "surprises." And when they occur, it's too late to learn that you're carrying inadequate coverage. We'll find out if gaps in your coverage exist. Horst Insurance offers great rates and has the support of more than 25 of the nation's best insurance carriers. For home, auto, jewelry, antiques, boats and so much more, knowing that you and your family have the coverage you need makes all the difference in the world.

Let's get a conversation started. 610-459-8285

On the road. At home. Horst keeps you covered.

JOHN MILNER ARCHITECTS DESIGN & PRESERVATION

www.johnmilnerarchitects.com



Malvern Blooms Festival

May 4, 2014

HELP CELEBRATE MALVERN'S 125TH ANNIVERSARY



If you've been to the Malvern Blooms Festival before, you know the fun in store. If not, well, you're missing out, and this year it's not to be missed. Malvern Blooms will be extra special with the 125th Anniversary Celebration of the borough of Malvern.

Hosted by Malvern Professional Business Association and held May 4th in the heart of this quaint downtown, this year's festival will transform Burke Park into "Posies in the Park" to inspire you to make your yard picture perfect.

Not interested in gardening? No worries. You're in for a treat whether you're coming for shopping, art, music, food or games and activities at KidZone. The whole family will love it.

Browse offerings from the Chester County Craft Guild—mixed media, jewelry, weaving and more, all perfect for Mother's Day. Meander over to King Street and Warren Avenue for more retail therapy with over 100 artists, crafters, retailers, antiques dealers and farmer's market shops.

For music, head to the stages. Jazz Lobsters, a 10-piece swing band, will hit the main stage with Big Band sounds. Local talent entertains from the Beams Stage.

Food-lovers can grab lunch from gourmet food trucks and area restaurants. Then cast your vote at the Bacon Cook-Off and sample Pennsylvania's fine wines and hard ciders. No matter what your pleasure, Malvern Blooms promises to please.

To continue the 125th Anniversary celebration, plans include an ice cream social in Burke Park on May 30, a 5K and Kids' Run benefiting a Wounded Warrior, baseball/softball games, a spaghetti dinner, and Chester County Concert Band recital on May 31. Plus the 146th annual Malvern Memorial Parade and a Cake Walk are scheduled for June 1. ♦

—Elana Beckett

Malvern Blooms Festival, May 4th from 11 to 4, at King St., Warren Ave. and Burke Park, Malvern. For more, go to GrowingRootsPartners.com.



^Before

After >

KING

CUSTOM BARN • ARENAS • OUTBUILDINGS • LIVING QUARTERS
COMPLETE DESIGN SERVICES • FINE AMISH CRAFTSMANSHIP

1-888-354-4740

WWW.KINGBARN.COM

*The hearth is the heart
of the home, we make it
safe and beautiful!*

Chester County Hearth & Home

- Visit our showroom for quality hearth products from Regency, Hampton, Enviro, Piazzetta and others...
- CSIA certified chimney service.
- NFI certified gas fireplace service.
- C-DET certified dryer vent service.
- Come see the new Renaissance Rumsford hi efficiency wood burning fireplace featuring a hideaway Guillotine style screen door and glass panel.

www.chesterchimney.com

19 Park Avenue
Elverson, PA
610-913-0730



Top regional designers lend their talents to a worthy cause when the Ware Decorator Showhouse & Gardens opens its doors, May 18 through June 7.

Ware DECORATOR SHOWHOUSE & Gardens



Ware Mansion and Gardens



Karen Viscito Interiors



Heritage Design Interiors
by Anita Yoder



Timeless Designs by Kate FitzGerald-Wilks

Don't just clean up this spring—kick off the season in style. What better place to find inspiration to update your home's style than a designer showhouse?

This May, head for the site of the Ware Decorator Showhouse in the historic three-story Gothic revival Ware Mansion in Oxford, in the heart of the Ware Presbyterian Village campus. Originally built in 1888 and later donated by Senator John H. Ware III and wife Marion to Presbyterian Homes of Central Pennsylvania, the house was decorated in a traditional, sophisticated Georgian style. For three weeks visitors can tour the mansion's interior and gardens to see them reinterpreted as classic elegance meets modern design.

As you stroll through, learn the latest design tips and trends on display in the 22-room mansion—an inspiring backdrop for well-known area designers like Diane Replogle, Kate FitzGerald-Wilks and Karen Viscito—a Nate Berkus personal pick.

“Designer showhouses are an excellent way for homeowners to get a feel for a designer's personality and style,” says Heritage Design Interiors' Anita Yoder. “People will get a chance to see how we design not only for the individual space, but for function and family as well.”

Relaxing and tranquil tones will fill the *South Suite*, while rich and rustic wood tones will dominate the *John H. Ware, Jr. Study*. In contrast, the *Crystal Dining Room* will feature the earthy colors of nature and sleek Italian marble floors.

Neutral palettes are invigorated with bursts of color and striking wallpaper selections, accented by metallic and lots of luster, for just a hint of glitz and glamour.

It's Georgian grace and Gothic chic married into one dazzling display, right down to the details. Each designer will showcase her talent and flair for home décor and style. (Designers' photos shown here give you an idea of the kinds of interiors to expect.)

Partnering with Winterthur Museum & Gardens and Longwood Gardens, the Showhouse is sponsored by the Oxford Foundation, an organization dedicated to harnessing the generosity of donors, encouraging legacy giving, and focusing on local needs and improvements in the quality of life.

Proceeds will benefit the benevolent care fund, provided for residents of Ware Presbyterian in need, and the Oxford Arts Alliance, which works to cultivate community through arts in our area.

Get inspired to give your home a grand makeover, all while supporting a great cause! ♦

Open daily, May 18–June 7. Tickets, \$25, available online. 7 E. Locust St., Oxford. For more information, WareDesignerShowhouse.org.

WOODY SEZ: THE LIFE AND MUSIC OF WOODY GUTHRIE

People's Light & Theatre, May 7-25

“Most folks don't know [Woody Guthrie's] name or his story but many recognize his songs,” says David M. Lutken, *Woody Sez* co-creator, co-devisor and the actor playing Guthrie himself. “It is his personal history,” Lutken continues, “his restless, tragic, prodigal, triumphant, gut-wrenching and defiant life that gives astonishing depth and dimension to his achievements and his famous obscurity. The musical *Woody Sez* is a show about a man and his songs.”

For those who don't know, Guthrie lived far outside the mainstream in mid-20th-century America. Revered as one of our greatest folk poets and musicians, Guthrie traveled the country with his voice and his guitar, adorned with a sticker that read: “This Machine Kills Fascists.” He experienced first-hand the poverty and hopelessness faced by the many working-class people who were devastated by the Great Depression, the Dust Bowl and World War II. Through words and music, Guthrie gave voice to the American people from the 1930s until his death in 1967.

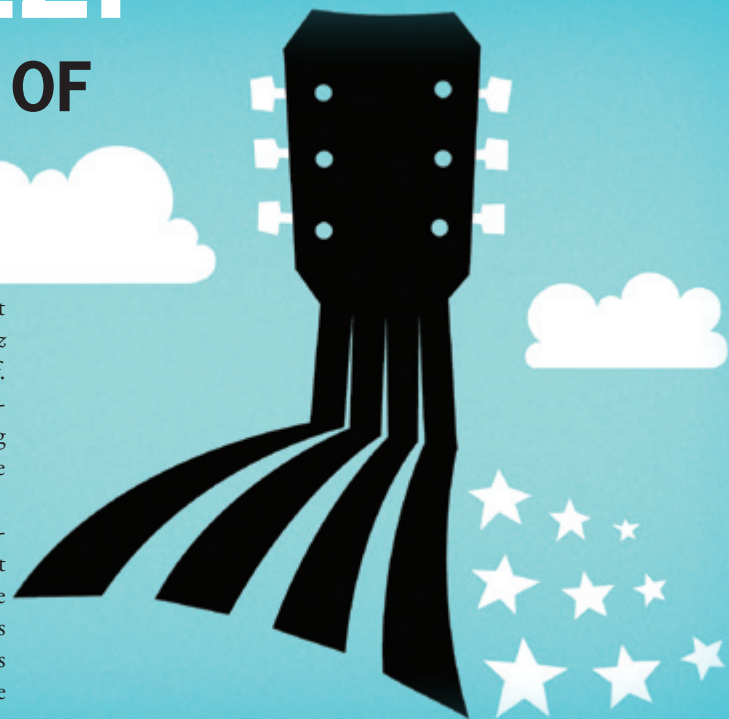
In 2001 Lutken got an outline for a play about the folk-singer, written by Guthrie's manager, Harold Leventhal. Lutken developed a children's play called *This Land is Your Land*. “As things kept evolving in the early 2000s,” Lutken explains, “I finally came around ... to write a show for grown ups.”

Through collaboration with fellow *Woody Sez* co-devisor, Nick Corley, the play transformed into the theatrical concert it is today, comprised almost entirely of Guthrie's own words, songs and writings and capturing his jaunty defiance and quiet moral force. *Woody Sez* features four actors who portray over 40 characters, play over 15 instruments and sing over 25 of Guthrie's songs including: “The Ballad of Tom Joad,” “Bound for Glory,” “This Land is Your Land.”

Woody Sez has delighted audiences around the world. “I love Woody,” says People's Light Producing Director, Zak Berkman. “We attribute activism and optimism to Guthrie that led to an entire folk movement today that deals with labor, history and family. But at the same time [*Woody Sez*] doesn't sugar-coat how difficult his life was, how tragic it was. It shows the casualties of being an American in that time.”

“We've learned there is a tremendous appetite for all kinds of music in this region, from folk to blues. We felt that *Woody Sez* fits well with our audiences and captures the spirit of our community,” says Berkman.

Local musicians and audiences are invited to join the cast of *Woody Sez* for a hootenanny following the Thursday performances on May 8, 15 and 22. Bring your instrument and jam with the cast for this toe-tapping event for all generations! ♦ ~ *Brie Knight*



Who is Woody Guthrie and why is there an entire play about this man? Just an American icon who inspired Dylan, Springsteen and an entire songwriting tradition.

Andy Teirstein, David M. Lutken, Helen Jean Russell, Darcie Deaville.



PHOTOS: WENDY MUTZ

If You Go:

Where & When: People's Light & Theatre
39 Conestoga Rd., Malvern. May 7-25

Box Office: 610-644-3500

Next: *Bach at Leipzig*

- Elegant Custom Kitchens, Bathrooms & Built-ins
- Exquisite Designs
- Exceptional Service & Installations



The Art of KITCHEN DESIGN

Candlelight Cabinetry

MADSEN
KITCHENS & BATHROOMS

2901 Springfield Road, Broomall ■ 610-356-4800

www.MadsenKitchensAndBathrooms.com

Showroom: Mon.-Fri. 9 to 5 pm • Sat. 9 to 3 pm
Evening hours by appointment only



PA 17217

**SYLVAN
STOLTZFUS
BUILDERS LLC.**

“We have worked with many contractors on all kinds of projects, but working with SSB was by far the best experience of all. Their ability to listen and capture the customer's vision is a company hallmark.”
-- Montgomery County, Pennsylvania



DREAM... DESIGN... BUILD!

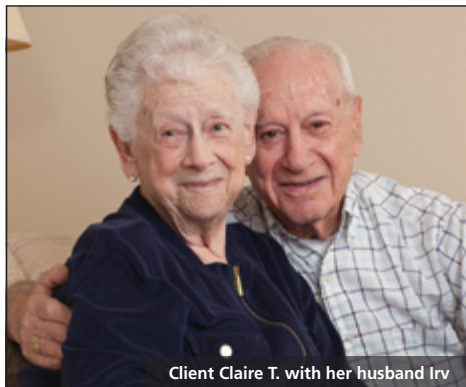
RESTORATIONS AND ADAPTIVE REUSE, TIMBER FRAMING, EQUINE FACILITIES, GARAGES AND ACCESSORY STRUCTURES, CUSTOM DECOR AND ACCENTS



1-800-881-9781

distinctive & commanding

stoltzfusbldrs.com



Client Claire T. with her husband Irv

With BAYADA Home Health Care...

“I can keep my high school sweetheart safe at home.”

— Irv T., Client's husband



www.bayada.com

BAYADA specialty practices include Home Health Care, Pediatrics, Hospice, and Habilitation.

With a broad range of services and a team of professionals who are committed to keeping people of all ages safe at home, BAYADA provides:

- Assistive care and nursing
- Thoroughly screened health care professionals
- Clinical support 24 hours, 7 days
- A variety of payment options

King of Prussia 610-992-9200 | Main Line area 610-658-7150 | Media 610-891-9400 | Newtown Square 610-353-5000

Compassion. Excellence. Reliability.



However you use your Hugh Lofting Timber Framing outbuilding, you can count on years of natural beauty and grace every time you open the door. From barns to carriage sheds to whole home timber frames, we offer a variety of meticulously designed custom and ready-made structures that are personal, functional and beautiful. Visit www.hughloftingt看timberframe.com



MILLION DOLLAR QUARTET

A NEW MUSICAL INSPIRED BY THE ACTUAL EVENT

ON DECEMBER 4, 1956,
JOHNNY CASH, JERRY LEE LEWIS,
CARL PERKINS, AND ELVIS PRESLEY
CAME TOGETHER TO MAKE MUSIC.

THEY ENDED UP MAKING HISTORY.

*Find out where it all began, May 27 through
June 1 at the DuPont Theatre.*



Behind the Music

On December 4, 1956, Elvis Presley, Johnny Cash, Jerry Lee Lewis and Carl Perkins gathered at Sun Records in Memphis for what would be one of the greatest jam sessions ever. These four young musicians, rock 'n' roll icons, performed only once—*Million Dollar Quarter* brings that legendary night to life.

Featuring a score of rock hits including “Blue Suede Shoes,” “That’s All Right,” “Great Balls of Fire,” “I Walk the Line,” “Folsom Prison Blues,” “Hound Dog” and more, The Tony Award Winning musical—the longest-running musical production in Chicago’s history—brings you inside the recording studio for one unforgettable experience.

Making History

Scott Moreau (Johnny Cash), Tyler Hunter (Elvis Presley), John Countryman (Jerry Lee Lewis), and James Barry (Carl Perkins) convey a believable sense of the mutual respect and country-fried camaraderie among these friendly rivals. Vince Nappo plays Sam Phillips, the “Father of Rock ‘n’ Roll” —the man responsible for bringing them all together.

According to *New York Times*’ Charles Isherwood, the play shows “the magic that must have taken place, as four great musicians with troubled lives and complicated careers came together to forget everything but what they loved to do most: express the riotous joy, beauty and sadness of life in songs that shoot straight for the soul.”

ENCORE!

The DuPont Theatre wraps up its season with a musical about making history—a coincidence? We think not. With over 100 years of continuous Broadway entertainment under its belt, the theater has lived up to its dream: to provide the Wilmington area with “the finest entertainment possible.”

Don’t miss your chance to be a fly on the wall of fame for this show and stay tuned for next season, when the DuPont Theatre does it again with another show-stopping line-up! ♦

If You Go

What: *Million Dollar Quartet*

Where: The DuPont Theatre at the Hotel du Pont
11th & Market Sts., Wilmington

When: May 27–June 1

Box Office: 800-338-0881; DuPontTheatre.com





Historic Downtown Wayne



Waynewood Hotel,
now the Wayne Hotel.



Louella House

What's New in Wayne

*Old world charm, new world class.
When it comes to Wayne,
what more could you look for?*

Wayne Bed and Breakfast



Paramour



Black Powder Tavern

Carol Metzker



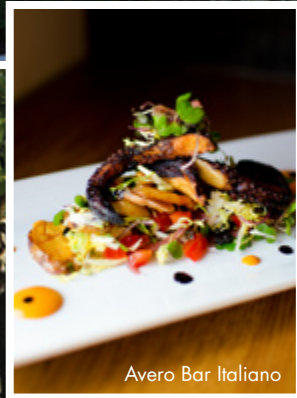
Lancaster Avenue



Peppercorn



Wayne Art Center



Avero Bar Italiano



Carmel Cafe & Wine Bar



Once farmland purchased by William Penn and settled by Quakers, the town of Wayne today bursts with business, buildings and activities. If Penn popped in at the corner of Lancaster and Wayne Avenues today, what would he think?

No doubt, the entrepreneurial pioneer would find Wayne so irresistible he'd don his hat and head to the sidewalk. Never mind confusion about automobiles that replaced horse-drawn carriages or electric lights that replaced candles. He'd first be astounded by the pavement under his buckled shoes—Lancaster Pike was the first paved turnpike in the world.

Penn might not be the only one curious about what's new in Wayne. With more building permits and licenses issued last year than ever before in Wayne's history, there's a lot for local residents and visitors to be curious about, too.

According to Diane Jiorle, president of Wayne Business Association, "Wayne is enjoying a renewed vitality with sophisticated businesses and innovative buildings that honor its old world charm."

To see for yourself, we suggest you take a tour of the town.

New Looks, New Season

This spring, three new boutiques—Jade's Closet, Louella and Element 6—are offering clothing and accessories that are turning heads. Jade Okare, proprietor of the shop that bears her name, opened the doors of Jade's Closet on West Lancaster Avenue last fall. It features chic, upscale, eye-catching apparel.

Owner Maria Delaney and Oliver the dog greet customers at Louella on East Lancaster Avenue. The boutique showcases clothing that's classic with a twist. Delaney points out what's "in" this spring—brightly-colored classic dresses with a modern flair and the latest styles in navy.

At Eagle Village Shops, six-month-young Element 6 carries fabulous designer clothing and accessories that are environmentally sound and fair-trade. Linen/cotton jackets by Feral Childe—a New York designer with ethical and sustainable practices—and organic cotton tees by Australian designer Betty Browne make social as well as fashion statements.

Women aren't the only ones enjoying top-of-the-line apparel. Inside The Tiger Shop on North Wayne Avenue, Robert Hutchinson's Custom Clothing offers men's custom suits, sport coats, trousers, shirts and casual clothing. Staff members provide personal attention and hints on dressing; or consult *Hutchinson's Ultimate Guide on How to Wear a Suit* on the company's website for tips on the proper length of sleeves and pants or trends in jackets.

For a new appearance and a new outlook, a visit to Currie Hair Skin & Nails is in order. Get a sensational hairstyle to greet warm temperatures and eliminate your winter stress with some spring pampering. The spa and salon, which celebrated its first birthday this past November, offers services for men and women. In addition to luxurious hair and nail designs, it also features skin and body treatments, massages and facials.



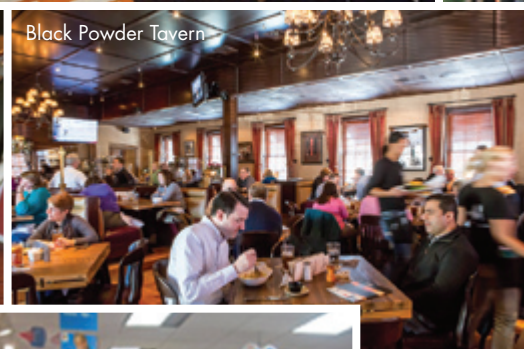
Lancaster Farmer's Market



Valley Forge Flowers



A Taste of Britain



Black Powder Tavern



The Little House Shop



Lucky Duck Toys



Budding Business

Boutiques aren't the only new kids on the block. Stroll into the Bella Oliva Taproom to shop for international gourmet olive oils, vinegars, foods and spices without pulling out your passport.

Then head past the landmark Anthony Wayne Cinema, where there's always a new movie showing, and up to The Antique Store in Wayne to see what the new owner has put in the 50 display cases to entice shoppers.

If you're looking for something for the little ones in your life, you're in luck. Lucky Duck Toys has over 10,000 items—enough to keep everyone in the family busy for hours. Nothing like a new toy to entertain the kids.

After a long winter and April showers, the May flowers around town are a welcome sight to residents and visitors alike.

The Community Garden Club at Wayne has been sowing seeds and arranging beautiful blossoms since 1947.

Fabulous Fare

One of the best reasons for coming to Wayne is to explore its great eateries. With so many choices, you could spend a month sampling fabulous fare. You'll be happy to hear new regulations allow more dining under the stars or brunching among the flowers at any restaurant with outdoor and sidewalk space.

Follow the bright orange awnings displaying words that describe the restaurant's philosophy—"Eat, Drink, Laugh, Love"—and step into Averro Bar Italiano where Chris DeFeo is the new chef. Enjoy his fabulous risotto of the day or fried calamari; consider staying for happy hour.

At the new Carmel Café and Wine Bar, get a taste of the way the Internet can transform a restaurant experience. In addition to serving delicious Mediterranean cuisine, staff members serve up an iPad for customers to view menu choices, place orders, pay for a scrumptious meal or simply surf for fun. This first Pennsylvania location of the chain opened on West Lancaster Avenue last September.

At Eagle Village Shops, dine at upscale Peppercorn, at the former site of Georges, or lunch at the new Café Fleur inside Valley Forge Flowers. Café choices include coffee drinks, "Good Spoon" soups made with fresh local ingredients, salads and indulgences near a sunny window and among blooms. If you're in the mood for a scone, head for A Taste of Britain where there's a new scone every month. Be sure to stop in during May.

2013 Best of the Main Line **40th Anniversary BEST of PHILLY 2013**

EAVES
APPAREL + ACCESSORIES

105 N ABERDEEN AVENUE WAYNE, PA 19087 610.688.4466
www.shopeaves.com

CONSCIENTIOUS. NATURAL FIBERS. FERAL CHILDE

FERAL CHILDE

ELEMENT SIX
A FASHIONABLE STATEMENT

Find us on [f](#) [i](#) [p](#)

LOCATION
Eagle Village Shops
503 W Lancaster Ave, Ste 630
Wayne, PA 19087

MONDAY - SATURDAY
10:00am - 6:00pm
SUNDAY
12:00pm - 4:00pm

+1 610 688 1519
ELEMENTSIXCLOTHING.COM

Lucky Duck Toys

Award-Winning Toys for Children of All Ages

Wayne & Haverford
610-254-0054
luckyducktoys.com

Hours: Mon-Fri 10am-6pm,
Sat 9:30am-5:30pm, Sun 12-4pm

Wayne Art Center 8th Annual

PleinAir Festival
MAY 12 - 17, 2014

30 National Artists
Juried Exhibition & Sale May 17 - June 28
Gala: May 17th 6-10pm

wayne art center 413 Maplewood Ave Wayne PA 19087
wayneart.org waynepleinair.org

A Taste of Britain

CAFÉ * TEA SHOP * CATERING

Lunch • Afternoon Tea • In-Home Catering
Private Parties • Premium Loose Leaf Teas
Trays of Tea Sandwiches, Scones, and Pastries
Imported British Groceries and Sweets

Eagle Village Shops
503 W. Lancaster Avenue • Wayne, PA 19087
Monday • Saturday, 10 am - 5 pm, Reservations Recommended
610-971-0390 • ATasteOfBritainInWayne.com

A M E N

(ah-may) salon and spa

Hair Salon Spa Wellness
610.995.2631
111 Waymewood Ave., Wayne, PA
www.amesalonandspa.com

Closer to Valley Forge National Park yet still in Wayne, Black Powder Tavern—an update of the former Winberie’s—is a place to raise a pint. The tavern once hosted stage-coach travelers and leaders of the American Revolution and, according to legend, secretly stored ammunition for the Continental Army. Enjoy American fare including dishes called Cannonball Casserole and Cheesy Devils on Horseback.

Buzz, Jazz and Dazzle

Wayne hosts a variety of events that enhance the quality of life in the community. This season, the Wayne Art Center holds its *plein air* outdoor art festival in May. See “Gallery Round Up” in this issue for details.

And although the Main Line Jazz and Food Festival is taking a hiatus after celebrating its 10th anniversary last June, you’ll want to be there when it returns—a day packed with signature dishes from local restaurants, a vast array of vendors, fun for kids and spectacular music.

September’s Radnor Fall Festival and Old Fashioned Christmas during the holidays are other family-friendly events that bring visitors to Wayne to enjoy the community and find out what’s old and what’s new.

If Penn came back to Wayne for a day, he’d have great things to say. After a tour of the town, you will, too. ♦

Special thanks to the Radnor Historical Society for use of their photos of historical Wayne.



Element Six



Louella



Jade's Closet

alison conklin
photography

484.264.5306
www.alisonconklin.com
hello@alisonconklin.com

Raising Spirits Since 1746

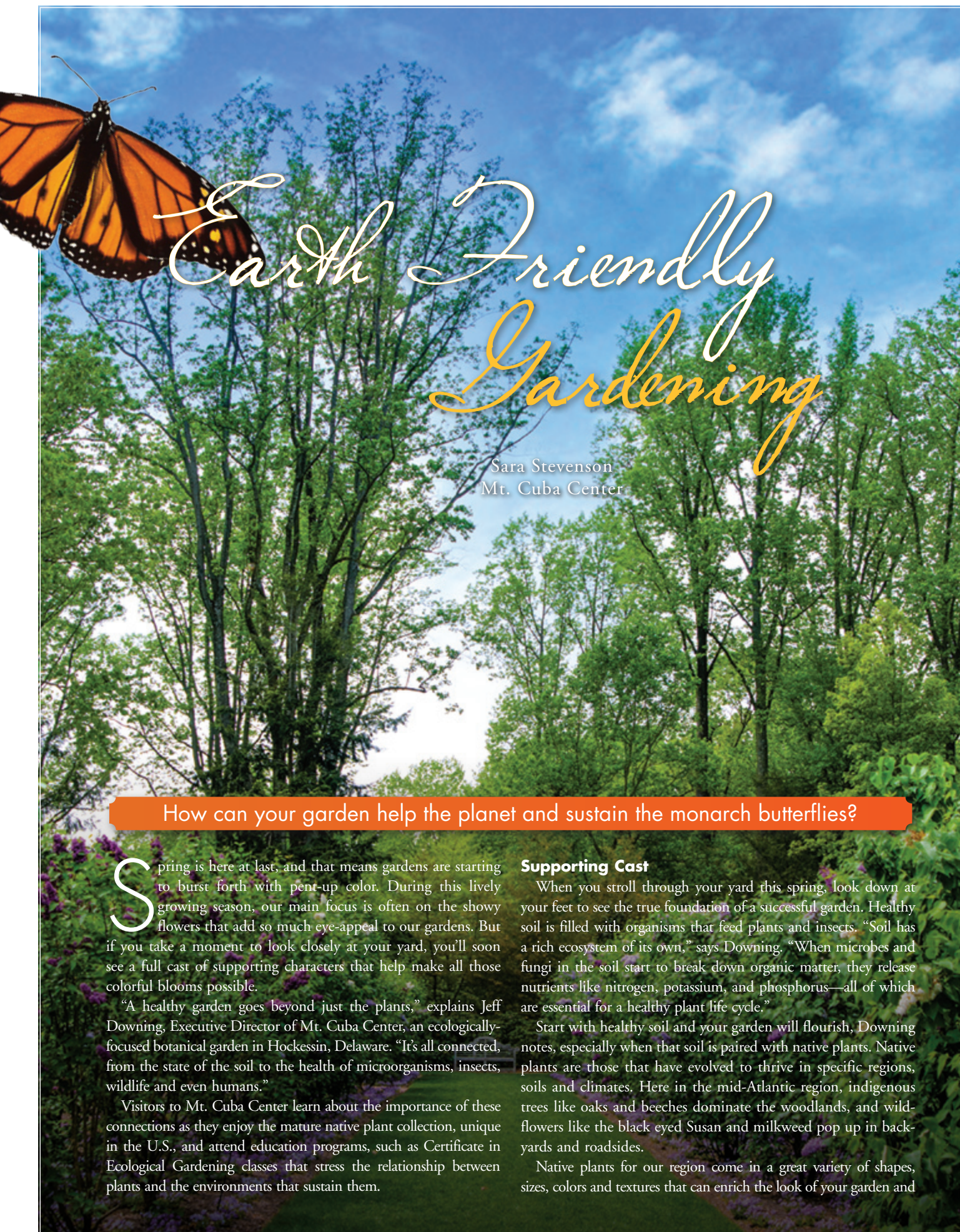
SMALL PLATES. CRAFT BEERS. LEGENDARY HOSPITALITY

BLACK POWDER TAVERN
CRAFT AMERICAN PUB

BLACKPOWDERTAVERN.COM
BEST NEW RESTAURANT VENTURE - COUNTY LINES MAGAZINE

WARREN CLAYTOR ARCHITECTS

HISTORIC RESTORATIONS | COUNTRY PROPERTIES | NEW RESIDENCES
TELEPHONE: 610-688-1744
WWW.WARRENCLAYTORARCHITECTS.COM



Earth Friendly Gardening

Sara Stevenson
Mt. Cuba Center

How can your garden help the planet and sustain the monarch butterflies?

Spring is here at last, and that means gardens are starting to burst forth with pent-up color. During this lively growing season, our main focus is often on the showy flowers that add so much eye-appeal to our gardens. But if you take a moment to look closely at your yard, you'll soon see a full cast of supporting characters that help make all those colorful blooms possible.

"A healthy garden goes beyond just the plants," explains Jeff Downing, Executive Director of Mt. Cuba Center, an ecologically-focused botanical garden in Hockessin, Delaware. "It's all connected, from the state of the soil to the health of microorganisms, insects, wildlife and even humans."

Visitors to Mt. Cuba Center learn about the importance of these connections as they enjoy the mature native plant collection, unique in the U.S., and attend education programs, such as Certificate in Ecological Gardening classes that stress the relationship between plants and the environments that sustain them.

Supporting Cast

When you stroll through your yard this spring, look down at your feet to see the true foundation of a successful garden. Healthy soil is filled with organisms that feed plants and insects. "Soil has a rich ecosystem of its own," says Downing. "When microbes and fungi in the soil start to break down organic matter, they release nutrients like nitrogen, potassium, and phosphorus—all of which are essential for a healthy plant life cycle."

Start with healthy soil and your garden will flourish, Downing notes, especially when that soil is paired with native plants. Native plants are those that have evolved to thrive in specific regions, soils and climates. Here in the mid-Atlantic region, indigenous trees like oaks and beeches dominate the woodlands, and wildflowers like the black eyed Susan and milkweed pop up in backyards and roadsides.

Native plants for our region come in a great variety of shapes, sizes, colors and textures that can enrich the look of your garden and

improve the local environment. These plants also provide a primary food and habitat source for native wildlife and insects which have evolved to depend upon them. And the insects in turn, feed native wildlife, playing an essential role in the local food web.

Long Live the Monarchs

The attraction to native plants is not only for food and shelter. Some species have evolved to rely on native plants for reproduc-

tion as well. One of our most iconic native insects—the monarch butterfly—lays its eggs exclusively on the leaves of the milkweed plant. Monarch caterpillars feed on the toxic milkweed leaves to develop defense mechanisms used for protection once they emerge as butterflies. Without the milkweed, the monarchs lose this essential defense.

Loss of our native milkweed plants is directly connected to the drastic decrease in monarch butterflies in the past few years.

By simply adding native milkweed plants to your garden plan, home gardeners can help support the monarch life cycle and bring back the glorious sight of these beauties fluttering through our gardens.

Going Native Is Easy

By choosing ecological gardening, horticulturists can actually limit the amount of work their garden takes. Plants thrive when they're planted in the right place and in the correct soil, and beneficial wildlife feed most successfully on native plants.

You'll be pleased to learn that you don't have to resort to dramatic changes to have a positive impact with your gardening. At Mt. Cuba Center, we promote conservation by addition—no need to pull up your tulips or other exotic plants. You can make a significant impact on the local ecosystem when you add native plants to your yard.



Get Certified

In fact, gardening in harmony with nature is central to Mt. Cuba Center's mission, and its Certificate in Ecological Gardening aims to share Mt. Cuba's expertise with a broader community. The certificate program consists of 14 courses covering a range of topics including native plants, composting, sustainable landscape techniques, and integrated pest management—an earth-friendly way to combat garden pests.

"The cornerstone course is Fundamentals in Ecological Gardening," says Downing. "This is a really unique offering. We'll showcase six members of our horticulture team who will lead behind-the-scenes demonstrations of ecological gardening techniques. The class is kicked off by Mt. Cuba Center's Director of Horticulture, Travis Beck, whose recent book, *Principles of Ecological Landscape Design*, is an exceptional study of environmental landscaping."

So, this year think about gardening for our planet and the monarchs. Certificate classes begin in May. ♦

Register for the Certificate in Ecological Gardening classes, 302-239-2422; MtCubaCenter.org.

Stroll through the Mt. Cuba Center gardens through November 1, Fri. & Sat., 10 to 4. Public tours, Thurs., 10 a.m.; Sun., 1 p.m. Private tours for groups of ten or more. Continuing Education classes, year-round. Visit May 9th for National Public Garden Day—free admission, family activities, and a native plant giveaway.





Lead Line



Side Saddle



Olympian McIn Ward



Photos by
Alix Coleman



Grand Prix



Saddlebred



Coaching



Best Young Horse

Pony Hunt Team



Devon Horse Show Daily Schedule

{ May 22 to June 1 }

THURSDAY ~ May 22

Junior Weekend – Thursday through Sunday
Family Day

*Specials on souvenirs, food and Midway rides.
Live music in the Picnic Grove, 5 to 9 p.m.*

8 a.m. to 7 p.m.
Dixon Oval

- ★ USEF Talent Search
- ★ WIHS Equitation Jumper
- Gold Ring
- ★ Pony Hunter Breeding
- ★ Pessoa/USEF Hunter Seat Medal

FRIDAY ~ May 23

The best Junior Riders in the country.

7 a.m. to 9:30 p.m.
Dixon Oval

- ★ ASPCA Maclay
- ★ R.W. “Ronnie” Mutch Equitation Ch.
- ★ Junior Jumpers
- ★ Junior Hunters
- ★ Junior Jumper Gambler’s Choice, 8 p.m.

Gold Ring

- ★ Pony Hunters

SATURDAY ~ May 24

*Lead Line, Junior and Pony Hunters and the
costumed Pony Hunt Teams.*

8 a.m. to 6 p.m.
Dixon Oval

- ★ Junior Hunters
- ★ Pony Jumpers
- ★ Lead Line, 1 p.m.

Gold Ring

- ★ Pony Hunters
- ★ Costumed Pony Hunt Teams, 4:30 p.m.

7 to 10 p.m.
Dixon Oval

- ★ Junior Jumper Classic
- ★ Radnor Fox Hounds
- ★ Horse Hunt Teams
- ★ Parent & Child
- ★ Family Class

SUNDAY ~ May 25

*The Carriage Pleasure Drive is the highlight of
the day’s events, followed by Pony Jumpers. Open
Tandem Driving Class competes in the evening.*

11 a.m. to 5:15 p.m.
Dixon Oval

- ★ Carriage Pleasure Drive
- ★ Handicapped Riders’ Division
- ★ Pony Jumpers

6:30 to 9:30 p.m.
Dixon Oval

- ★ Pony Jumpers & Adult Amateur Jumpers
- ★ Open Tandems

MEMORIAL DAY MONDAY ~ May 26

*Visit the Tea Cart for a special blend of iced tea,
specialty coffees, tea sandwiches and pastries. Stop
by the Derby Booth for a chance to win the raffle.*

8 a.m. to 6 p.m.
Dixon Oval

- ★ Hunter Classes
- ★ Pair Horses
- ★ Scurry Driving
- ★ Adult Jumpers
- ★ Shetland Pony Races
- ★ Carriage Racing

7 to 9:30 p.m.
Dixon Oval

- ★ NAL Adult Amateur Jumper Classic
- ★ Coaching
- ★ Single/Pair Pony Driving

TUESDAY ~ May 27

Family Day

*Specials on souvenirs, food and Midway rides.
Guided back-barn tours, 3 to 6 p.m.*

8 a.m. to 6:15 p.m.
Dixon Oval

- ★ Hunter Classes
- ★ Open Unicorns
- ★ 7- & 8-Year-Old Young Jumpers
- Gold Ring, morning only
- ★ 5- & 6-Year-Old Young Jumpers

7 to 10 p.m.
Dixon Oval

- ★ Open Jumpers
- ★ Single Horse Driving
- ★ Coaching
- ★ Coach Horn

WEDNESDAY ~ May 29

Ladies Day

*Ladies Day at Devon! Ladies Side Saddle Classes
and the Ladies Hat Contest.*

8 a.m. to 5:30 p.m.
Dixon Oval

- ★ Hunter Classes
- ★ Ladies Side Saddle
- ★ Hackneys, Saddlebreds & Friesians
- ★ 7- & 8-Year-Old Hunters
- ★ Open Jumpers

Gold Ring, morning only

- ★ 5- & 6-Year-Old Jumpers

7 to 10:15 p.m.
Dixon Oval

- ★ Open Jumper
- ★ Ladies Side Saddle
- ★ Hackneys & Saddlebreds
- ★ Coaching
- ★ Friesians

THURSDAY ~ May 29

*Be sure to take a chance on this year’s Operation
Goldmine prize—a gold bracelet with diamonds!*

8 a.m. to 7 p.m.
Dixon Oval

- ★ USHJA Hunter Derby
- ★ Hackneys & Saddlebreds
- ★ Coaching
- ★ Friesians

7:15 p.m.
Dixon Oval

★ **The Grand Prix of Devon** ★

FRIDAY ~ May 30

*Amateur Owner Hunters & Jumpers, Local
Hunters, American Saddlebreds, Hackneys &
Friesians.*

7:30 a.m. to 6:30 p.m.
Dixon Oval

- ★ Amateur Owner Jumpers
- ★ Hackneys & Saddlebreds
- ★ Open Jumpers

Gold Ring

- ★ Local Hunters
- ★ Amateur Owner 3’3” Hunters

7 to 10 p.m.
Dixon Oval

- ★ Friesians
- ★ Gambler’s Choice Open Jumpers
- ★ Coaching Championship & Coach Horn
- ★ Hackneys & Saddlebreds

SATURDAY ~ May 31

*Devon’s second major Open Jumper Class in
the Dixon Oval tonight and the Devon Derby
Drawing for a 2014 Jaguar F-Type (2 year lease)
and other great prizes.*

8:30 a.m. to 5:45 p.m.
Dixon Oval

- ★ Amateur Owner Hunters
- ★ Saddlebreds & Hackneys
- ★ Amateur Owner Jumper SJHOF Classic

Gold Ring

- ★ Local Hunters, Amateur Owner
3’3” Hunters

7 to 10 p.m.
Dixon Oval

- ★ Idle Dice Open Jumper Stake
- ★ Saddlebreds
- ★ Hackneys & Roadsters

SUNDAY ~ June 1

Family Day

*Free admission and seating today!
Pony rides, Itty Bitty Hat Contest, live
entertainment, a plant sale and more.*

8 a.m. to 3 p.m.
Dixon Oval

- ★ PA Bred Thoroughbred &
Non-Thoroughbred
- ★ Young Hunter Under Saddle ♦





Photos by
Alix Coleman

Devon Style:

WHAT TO WEAR AT THE DEVON HORSE SHOW & COUNTRY FAIR

The Devon Horse Show & Country Fair is one of the few places you'll see cowboy boots and tuxedos, Tory Burch flats and jeans, yoga pants and Lily Pulitzer shifts—all in a single glance. With such a variety of fashion choices and an equally wide array of activities happening every day—from riding competition in the ring to elegant entertaining in the spectator boxes, riding the Ferris wheel on the midway to riding in an antique horse-drawn carriage through town—it can be tricky to get the right look at the right time. To make you feel like a veteran, we offer you a guide to Devon Style ...



These vendors have provided the items featured on the following pages:

Caracol - Booth 58B
CaracolSilver.com / 702-251-5454

Courtney Design - Booth 29
CourtneyDesign.com / 610-932-6065

Dubarry of Ireland - Booth 58A
Dubarry.us

Gina Johnson Designs - Booth 57
GinaJohnsonDesigns.com / 610-805-7345

Gingy's - Booth 9
Gingys.com / 610-664-0200
12 W King St, Malvern

Hats by Katie - Booth 16
HatsByKatie.com / 859-707-0818

J McLaughlin - Booth 30
JMcLaughlin.com / 484-367-0204
503 E Lancaster Ave, #6A, Wayne

The Little House Shop - Booth 31
LittleHouseShop.com / 610-688-3222
503 E Lancaster Ave, Wayne

ML WILLCOX - Booth 38A
Facebook.com/pages/ML-Willcox
610-304-2340

Madison James - Booth 56
MadisonJames.com

Malvern Saddlery - Booth 51
MalvernSaddlery.com / 610-695-9980
1 E King St, Malvern

Pinnell Custom Leather - Booth 7
PinnellCustomLeather.com / 434-981-2397

Polka Dots - Booth 15
ShopatPolkaDots.com / 610-640-2714
29 Leopard Rd, Paoli

pucciManuli - Booth 16A
pucciManuli.com / 917-945-2644
35 Cricket Ave, Ardmore

Simply Fabulous Accessories - Booth 21
FabulousAccessories.net / 856-524-2366

Turner & Co - Booth 10
Facebook.com/TurnerCo / 302-584-0041

Suzanne Designs - Booth 8
610-529-8099

Tuyet Distinctive Jewelry - Booth 13
TuyetJewelry.com / 610-316-7338

Vogel Boots & Shoes - Booth 20
VogelBoots.com / 212-925-2460
19 Howard St, New York, NY

1896

IN THE RING

If you're riding at the Devon Horse Show, you've made it. All the years of hard work and training have paid off. When riding in one of the oldest and most prestigious shows in the country, nothing but the best will do.



Embellished show coat (1), embellished shadbelly coat (2), beige breech (3), all by Equiline at Malvern Saddlery, Booth #51. Fieldmaster boot with full front lacing (4), \$1500, at Vogel Custom Boots and Shoes, Booth #20. Riding Crop pin (5), \$425, Gina Johnson Designs, Booth #57. Hand engraved silver cuff riding crop (6) and Samshield riding helmet (7) both at Malvern Saddlery, Booth #51.

THE CARRIAGE PLEASURE DRIVE

Memorial Day parades along the Main Line may take place on Monday, but Devon has its own parade on Sunday—the Carriage Pleasure Drive. In homage to Devon's early days, graceful carriages—from delicate wicker phaetons pulled by a pony, to glossy antique coaches behind four beautifully matched horses—carry very properly attired and be-hatted passengers through the streets of Devon to the Dixon Oval.



Leather hunting stool (1), Sal and Luna, \$395, horse head ice bucket (2), \$326, both at The Little House Shop, Booth #31. Point-to-Point blankets (3), \$360, at Madison James, Booth #56. Galway boot (4), \$479, at Dubarry of Ireland, Booth # 58. Greyhound statue (5) and wood and mirror tray (6), both at ML WILLCOX, Booth #38A.

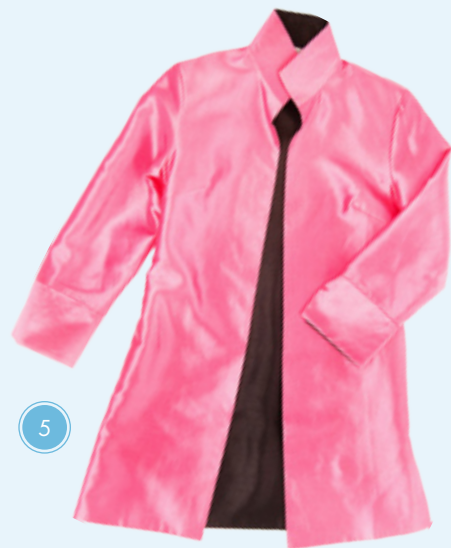


LADIES DAY

It's all about the hat. One of Devon's most popular and revered traditions, Ladies Day is a visual delight! Hundreds of women descend for the annual Hat Contest decked head-to-toe in some of the greatest looks of the season; classic elegance, fun and flirty, themed attire and boho chic.



1



5



3

Samuel Dong black party dress (1), \$148; Jeanne Simmons black hat (2), \$54, both at Polka Dots, Booth #13. Sinimay leopard print hat (3), \$415, at Hats by Katie, Booth #16. Black woven clutch (4), \$55, Simply Fabulous Accessories, Booth #21. Pink and black reversible jacket (5), Grace Chuang, \$98, at Polka Dots, Booth #14. Hot pink sinamay and black coque feather hat (6), \$415, at Hats by Katie, Booth #16. Skirt (7), Jude Connally, \$118, at Gingy's, Booth #9.



6



2



4

7

Hand-painted piece (1), Frederique, \$36, at Devon Souvenirs, Booth #34. Blue cross-body bag (2), \$275, at Pinnell Custom Leather, Booth #7. Turkish Peshtemal linens (3), Antiochia, \$29-\$39, at pucciManuli, Booth #16A. Seabiscuit glasses (4), Richard Bishop, set of 4, \$46.50, and Bannerman pitcher (5), Ralph Lauren, \$395, both at The Little House Shop, Booth #31. Turkish fouta (6), \$35, at Suzanne Designs, Booth #8. White equestrian print dress (7), \$205, at J McLaughlin, Booth #30. Sterling silver English riding boot bracelet (8), \$315, at Tuyet, Booth #12. Sterling silver and 14kt gold horse head pin/pendant (9), \$348, at Courtney Design, Booth #29.



3



6



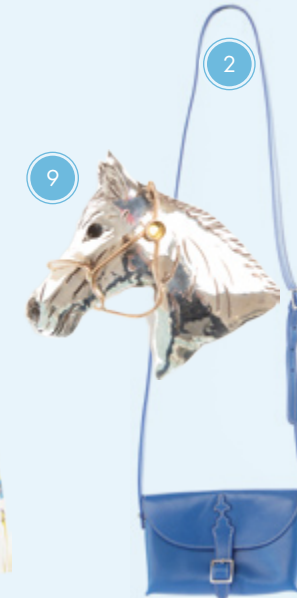
4



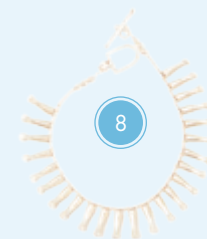
5



7



2



8



1

ENTERTAINING IN YOUR BOX

You've done it! After waiting patiently you've made it off the waiting list and have your own Devon Box ... or maybe it's been in your family for generations. Either way, having guests in your box is one of the great joys of the Devon Horse Show, and entertaining with all the grace and panache you would in your home is expected!



STROLLING THE COUNTRY FAIR

There's no better time at the Devon Horse Show than when the sun is setting after a warm day, the air is cooler, the Ferris wheel lights the evening sky, and the shops beckon happily with twinkle lights. The daylight is waning and families meet up for a bite to eat, some fun-time in the Midway for the kids, and a little shopping before the evening action in the Dixon Oval begins.



Skinny jeans (1), Hudson, \$189, light-weight cashmere sweater (2), \$228, both at Turner & Co., Booth #10. Multi-color scarf (3), \$75, at J McLaughlin, Booth #30. Clavado leather cuff (4), \$149, at Caracol, Booth #58B. Inter-changeable belt and buckle (5), SFA, \$68, at Simply Fabulous Accessories, Booth #21. Backpack with removable plush ponies (6), \$22, youth Devon insignia riding pant (7), \$50, and mesh riding shirt (8), \$40, both by Kerrits, all at Devon Kids, Booth #35.



nota bene boutique
something special for you and others
women's clothing, gifts and accessories



Nota Bene Boutique
117 W. King Street
Malvern, PA 19355
610.644.5016

notabeneboutique.com



We pay cash for women's better clothing and home furnishings. Stop in and then stop in again, because you never know what you'll find!



ChicAndSimpleResale.com

Store Hours
Monday - Saturday
10:00 a.m. - 5:00 p.m.

573 Lancaster Ave.
Berwyn, PA 19312
ph: 610-993-3300

BeLaro JEWELERS
JEWELRY SALES REPAIR & DESIGN WATCH REPAIR & BATTERIES BUYERS OF GOLD & SILVER



Becky and Laura
Locally Owned
& Operated
Over 25 Years
Experience!



- ◆ Expert Jewelry Repair
- ◆ Custom Jewelry Design
- ◆ Estate, Vintage, and New Jewelry Sales



Let us help you redesign your heirloom pieces for a fresh, new personalized design.

31 E. Lancaster Ave. • Downingtown
610-269-6020

www.BeLaroJewelers.com



Philly "Hot List" Award Winner:
Facials, Waxing

Facials • Massage • Waxing
Microdermabrasion • Airbrush Tanning
Chemical Peels • Dermapen® Skin Therapy
Make-up • Eyelash & Brow Tinting

35 Bridge St. Phoenixville, PA 19460
610-457-4447 • glowboutiquespa.com

Gallery Walks, Art Tours & Festivals

Gallery Walk in West Chester

This annual Spring event, hosted by the Greater West Chester Chamber of Commerce, marks its 24th year, celebrating the community of artists and galleries making West Chester their home.

In addition to exhibits at galleries, the evening includes “one-night-only” shows designed to focus on the work of an individual or group of artists. Five prominent galleries open their doors to give up-and-coming artists a venue for their work. Look for signs for Gallery Walk hosts.

Always a popular feature, The Chester County Art Association will display members’ work from their annual “Plein Air” program in the Atrium at 17 E. Gay Street. And Tim Vaughan shows his work at DNB First Bank at 2 N. Church Street.

Make an evening of it!

May 2, 5 to 9 p.m. 610-696-4046; GWCC.org.

Chester County Studio Tour

Want to “Engage with the Arts”? Armed with a map and a desire to see the artists in their environment, you can visit the studios

and see the artists in the places their art is created. Many will feature demonstrations or works-in-progress.

This year’s tour has expanded to include 77 artists in 34 studios across Chester County. Some artists are grouped together at each stop, highlighting the diversity of media pro-

fessional artists work in today, such as paint, paper, porcelain, metal, clay and steel.

And, if you miss the tour, stop by the Art Trust, 16. W. Market in West Chester to see works on exhibit through June 11.

Tour: May 17, 10 a.m. to 6 p.m.; May 18, 11 to 5. ChesterCountyStudioTour.com.

OWN IT!

STYLE BY

MALVERN
SADDLERY

MALVERNSADDLERY.COM

Samshield TUGGI



The Art Gallery at Devon

Who knew there was an art gallery in the midst of the Devon Horse Show & Country Fair grounds? It’s one of our favorite places for a short break from the action in the Dixon Oval. A visit to the charming clapboard cottage filled to the rafters with art—just past the souvenir stand and lemon sticks but before you hit the Midway and the tempting shops of the Country Fair—is pure pleasure. Look for the large horse sculpture by Kathleen Friedenbergh positioned outside this year.

Visit the Gallery

Since its opening in 1999, the Art Gallery has become a magnet for artists, art lovers, collectors, and browsers alike—anyone who enjoys equestrian pieces, landscapes and fabulous art for all tastes and all budgets. The Art Gallery’s popularity makes it one of the top grossing contributors to Bryn Mawr Hospital, beneficiary of the Country Fair.

More than 500 pieces of art are for sale at this juried exhibit, representing over 65 regional and national artists working in many media—oils, watercolors, acrylics and even sculpture, with subjects

ranging from landscapes and equestrian themes to still lifes and animals—dogs, cows, pigs, foxes and even a rooster or two.

The Art Gallery is a treasure trove of works by renowned regional artists such as Shawn Faust, Robert Stack, Tim Simboli, Elise Phillips, among others. And each year an artist is commissioned to create the official Devon Poster, presented at the Gallery’s opening night. Stop by to see Susan Sponenberg’s design for 2014 and to purchase the original piece or a poster (*shown here*).

Celebrate at First Night

On May 21, the night before the official opening of the Horse Show, First Night at Devon is a festive kick-off to the show. Guests mingle with artists and art lovers, listen to music, and enjoy cocktails (including a special signature cocktail) and hors d’oeuvres from Sage Catering, while being treated to a special preview of the art.

Come enjoy the art and join the party! ♦

The Art Gallery is open May 22nd to June 1st, 10 a.m. until closing of the show, around 10 p.m. For information, call 610-942-1996.

PHOTOS: ALIX COLEMAN



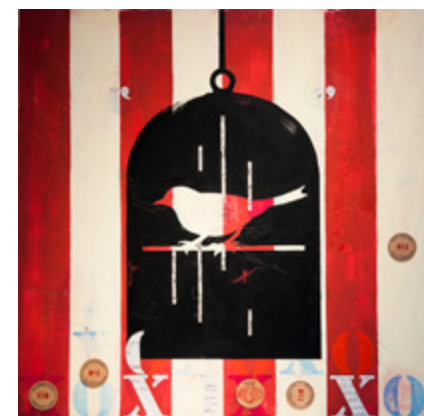
Tim Vaughan's *Early Spring - East Gay Street* at Gallery Walk

Wayne Plein Air Art Festival

The festival begins with a private Artist and Patron Welcome Dinner at the Wayne Art Center on Monday, May 12. Artists arrive with blank canvases that will be stamped to ensure all work is created during the festival. Then the artists will be ready to begin the challenge of executing a brand new work.

On May 13, these 30 distinguished artists from around the country start their five-day landscape painting competition culminating in a Gala on May 17 in the Davenport Gallery, 6 to 10 p.m. This is your chance to meet the artists in a festive and elegant setting with open bar and hors d'oeuvres by Jimmy Duffy Catering plus an ice sculpture luge.

Through June 28. Wayne Art Center, 413 Maplewood Ave. in Wayne. Gallery hours: Mon.-Fri., 9 to 5; Sat., 10 to 4. 610-688-3553, ext. 211; WayneArt.org. ♦



Ellie Byrom Haley's work on the Studio Tour.



Teresa Haag's work on the Studio Tour.

Spend the summer with horses.

Discover the overnight riding camp at New Meadow Farm in Virginia's Shenandoah Valley.

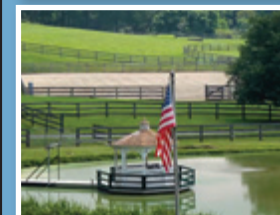


For more information, visit us online at newmeadowcamp.com or call Jess Kulp at 610.825.9838.

James A. Cochrane, Inc.
PO Box 608 Kimberton, PA 19442
Tel: (610) 469-6100



James A. Cochrane Inc.
REALTOR



If you've been searching for the perfect equestrian property then welcome home to Waterford Farm. This is one of the best homes in our listing portfolio! Built in c. 1780 this home is a lovely blending of historic charm and today's modern conveniences. With 5 bedrooms and 3 1/2 baths any family will feel quite comfortable in this gracious home. This property encompasses over 70 acres of open space in Southern Chester County and includes the Muddy Run stream running through it, along with a pond. This is the ideal set up for a 3-day Eventer! The current owners have set up a beautiful field with eventing fences along with an outdoor sand ring, a dressage ring and horse walker. There is also a bank barn with 12 stalls, a tack room and wash stall.

Visit our website www.cochraneinc.com for these & other properties!

BRANDYWINE RIVER MUSEUM OF ART

ANTIQUES SHOW

SATURDAY, MAY 24 –
MONDAY, MAY 26, 2014

FINE ANTIQUES INCLUDING FURNITURE, SILVER, PRINTS AND MORE FROM 31 DISTINGUISHED DEALERS

PREVIEW RECEPTION

Friday, May 23, 6–9 pm \$125

BREAKFAST & TOUR

Wilhelm Schimmel: A Bold Piece of Work
Saturday, May 24, 9 am \$25

A PASSION FOR COLLECTING:

Dealers' Talks
Sunday, May 25 & Monday, May 26
10:30–1:30 pm

SHOW HOURS

10 am–5 pm \$15 Admission

BRANDYWINE RIVER MUSEUM OF ART
US Route 1, Chadds Ford, PA 19317
610.388.2700
www.brandywine.org

Corporate Sponsors

The Pearl Group at CRW Graphics, Everything But The Kitchen Sink, Back Burner Restaurant, Inn at Montchanin Village, Crazy Kat's

Media Sponsors

The Hunt, Delaware Today, Main Line Today

Proceeds from the show support the Museum Volunteers' Art Purchase Fund.

Peter W. Chillingworth,
Show Manager

STOLTZFUS

FEED & SUPPLY

COMPLETE NUTRITION THAT SHOWS

STORE HOURS

WEEKDAYS	SATURDAYS
8AM to 7PM	8AM to 5PM

CLOSED SUNDAY

FEED • EQUINE • GARDEN & WILD BIRD • PET

80 Route 41, Gap, PA 17527
717-442-8280 • www.stoltzfusfeed.com



The Season for STEEPLECHASE!

Lauren Klosinski

Willowdale Steeplechase
PHOTO: JIM GRAHAM

Feel the ground shake as they race by, listen to the cheering of thousands of adoring fans, and experience the excitement as beautiful thoroughbreds and expert jockeys leap over hurdles as they circle the race course. It's that time of year again—spring is in full bloom and the horses are back on the track. So hang on to your hats, because Steeplechase Season is here with this year's races charging into May at full speed.

Perfect for the entire family, the races have much to offer with fine vendors, special events for kids and dogs, and don't forget the tailgating! So break out your brightest summer dress and matching hat, prepare your picnic and Pimm's cup, and get ready to jump into one of the oldest and best-loved spring sporting traditions in our area.

Steeped in History

Steeplechase is steeped in history as well as tradition. This highly competitive form of horse racing gets its name from mid-18th-century races in Ireland that were run on courses that stretched—from church steeple to steeple. Steeplechase crossed the pond and galloped into the U.S. in the early 1900s and has been embraced by fans here ever since.

But steeplechase and the tradition of race day have become much more than just a sporting event. Beyond the thundering of hooves and the high-spirited competition, steeplechase races are a chance for communities to come together, entertain family and friends, and raise money for charitable causes.

36th Winterthur Point-to-Point

Returning for another year of timeless tradition and exciting sport is the 36th Winterthur Point-to-Point. The stakes are even higher this year with purses weighing in at \$10,000, \$15,000 and \$20,000!

The Point-to-Point has a long list of attractions to offer enthusiasts including a new arrival, the "Costumes of Downton Abbey" exhibition at the Winterthur Museum located near the race course. Don't miss returning favorites to the event, such as the antique carriage parade, River Hills foxhounds, pony rides and stick horse races for the kids, and, of course, a selection of dog-lover-approved activities for our favorite smaller, four-legged racegoers.

There's plenty to do before the horses take off whether you spend your morning tailgating and enjoying the lush natural beauty of the estate and grounds, shopping the mar-



Willowdale Steeplechase
PHOTO: JIM GRAHAM



Winterthur Point-to-Point
PHOTO: BOB HICKOK



Winterthur Point-to-Point
PHOTO: PAT CROWE



Radnor Hunt Races
PHOTO: ALIX COLEMAN

ketplace's premiere selection of equestrian-themed finery, marveling at the antique auto display featuring Rolls-Royces and Bentleys, or savoring the sounds of the Delaware State Police Pipe Band.

With races starting at 2, plan for an afternoon of thrilling entertainment. Head to the races for one of the area's most stylish spring sporting event.

When: Sunday, May 4; gates open 10:30 a.m. for tailgate and premium parking; general admission 11:30 a.m.; first race 2 p.m.

Where: Winterthur Museum, 5105 Kennett Pk. (Rt. 52), Winterthur, DE

Info: 302-888-4994; Winterthur.org

Tickets: Adults, \$50; 12 to 20, \$15; under 12, free. Tailgating, \$250-600.

Benefits: Winterthur Garden and Estate

Tip: Winterthur Member discounts available. Shorten your walk and purchase Premium Parking. Advance sales only.

22nd Willowdale Steeplechase

A long-standing Mother's Day tradition, Willowdale Steeplechase lets families gather together in the beauty of the countryside to witness this spring showcase of the nation's finest equestrian talent. At this celebrated community event,

equestrian enthusiasts and non join to eat, drink, mingle with family and friends and of course, watch the races.

With a three-and-a-half-mile-long uphill course and five-foot-high hedges and timber fences, and jockeys galloping at speeds up 35 miles per hour, the races promise spectators an afternoon filled with suspense and thrill. The most exciting event is the Water Jump, a spectacular 12-foot leap with an 18-inch drop, unique to the Willowdale Steeplechase.

Before the races begin, mothers and families can enjoy everything a day at the races has to offer, including Jack Russell Terrier Races, antique car displays, the themed tailgate competition, pony races, and activities for kids plus a superb collection of shopping boutiques and vendors. Relive a wonderful tradition or make new memories at the Willowdale Steeplechase.

When: Sunday, May 11; gates open 10 a.m., first race 1:30 p.m.

Where: Located at Rts. 82 & 926; 101 E. Street Rd., Kennett Square

Info: 610-444-1582; Willowdale.org

Tickets: \$25 in advance, \$30 at gate; under 12 free. Tailgate \$175-450

Benefits: Stroud Water Research Center, Quest Therapeutic Services and The Univ. of Penn School of Veterinary Medicine's New Bolton Center

Tip: Come early to avoid traffic on country roads.



Radnor Hunt Races
PHOTO: ALIX COLEMAN

84th Radnor Hunt Races

A picture of elegance with women in stylish hats and even men in colorful attire, the Radnor Hunt Races offer fans a day filled with stimulating sport, boasting six races with purses totaling an impressive \$200,000. Belly up to the rail and watch in wonder as expert jockeys run and jump their mounts with speed and skill over a series of hurdles.

With over 15,000 people coming out to the course, the Radnor Hunt Races are one of the largest, as well as oldest, in our area. In support of their campaign—Racing for Open Space—Radnor Hunt donates its proceeds to the Brandywine Conservancy to benefit the open space and clean water programs continuing the steeplechase tradition of charitable sport.

Race day includes classic race activities from the beautiful carriage parade to the parade of the Radnor Hunt Fox hounds. Guests can also enjoy the return of the picnic competition—this year's theme is Garden Parties: Castles to Cottages. Tailgate and enjoy chic corporate hospitality tents or break out the fine china, polish the silver and create your own stately dining experience right next to the action.

Breathe in the spring air and enjoy the glory of a race steeped in tradition and a good cause.

When: Saturday, May 17; gates open 10:30 a.m.; first race 1:30 p.m.

Where: Radnor Hunt Grounds, 826 Providence Rd., Malvern

Info: 610-647-4233; RadnorHuntRaces.org

Tickets: Parking \$50/car includes all passengers. \$100-\$600/car railside parking available

Benefits: Land and Water Preservation Programs at Brandywine Conservancy

Tip: Advance ticket sales only. No stilettos, you'll be walking on grass. ♦



Willowdale Steeplechase
PHOTO: AMY KRAMER

COME VISIT US!

Summer Camp: July–August

Weekly Lessons, Private or Group:
Mon–Fri: 8am–9pm, Sat: 8am–5pm

Call Today! 610-644-1963

THORNCROFT
EQUESTRIAN CENTER

WWW.THORNCROFT.ORG



Photos: Mary Hunt Davis

Integrity

is in The Details

Horse Barns • Riding Arenas • Bank Barns
Garages • Agricultural Buildings

White Horse Construction, Inc

5080 Leike Rd., Parkesburg, Pa 19365
ph: 610-593-5559
toll free: 888-385-2360
www.WhiteHorseConstructionPA.com

Preserving land for all generations to enjoy



Connect to Nature with Willistown Conservation Trust

- Walk the trails at our Ashbridge, Kirkwood, and Rushton Woods Preserves
- Visit Rushton Farm
- Support habitat restoration efforts
- Observe migratory birds at our banding station
- Help steward our natural resources
- Join the PA Young Birders
- Volunteer today!

WILLISTOWN
CONSERVATION TRUST

925 Providence Road, Newtown Square, PA
610-353-2562 | wctrust.org



Willowdale Steeplechase
PHOTO: AMY KRAMER

SATURDAY, MAY 17, 2014

RADNOR HUNT RACES

Join the tradition of tailgates and tent parties at the 84th Radnor Hunt Races. Six steeplechase races for \$200,000 in purses bring the best in the sport to Radnor Hunt in Malvern. Get a spot on the rail and be up close for all of the action. Invite some friends and share the beauty of horseracing in the open countryside.

ADVANCE SALE ONLY
Purchase by May 9th
www.radnorhuntraces.org
610.388.8383



BRANDYWINE
CONSERVANCY &
MUSEUM OF ART

ALL PROCEEDS
BENEFIT THE OPEN
SPACE AND CLEAN
WATER PROGRAMS
OF THE BRANDYWINE
CONSERVANCY.



PRESENTING SPONSOR **BNY MELLON** CELEBRATING **30 YEARS** AT RADNOR HUNT
WEALTH MANAGEMENT

PHOTOGRAPHY BY JIM GRAHAM

Home & Garden Gour Guide

Spring at last! We suggest you celebrate the season on National Public Garden Day, Friday May 9, by heading to your favorite outdoor paradise. Participating gardens, arboreta, conservatories and historical landscapes mark the event with special activities. Or discover a new local Garden of Eden on Mother's Day weekend, when instead of bringing flowers to Mother you bring Mother to the blooms. Let nature inspire you!

Our Guide takes you into June for more flowering fun—from sales of native plants and rare herbs to self-guided tours and live entertainment. And don't miss the designer show houses, too, covering Bucks, Delaware and Chester Counties. There's even a Coop Snoop & Garden Tour for a look inside hen houses, beehives, kitchen gardens and more. Makes you glad spring is here!

PHOTO: COURTESY BRANDYWINE RIVER MUSEUM, MARK GORMEL

Through May 31

Bucks County Designer House & Gardens. Designers display their creativity in interior and landscape design at Serendipity Farm, a 245-year-old farmhouse in Bucks County. Benefits Doylestown Hosp. and Village Improvement Assoc. 131 Pine Mill Circle, Doylestown. Mon-Wed, 10 to 4; Thurs-Fri, 10 to 7; Sat, 10 to 4; Sun, noon to 4. \$25. 215-345-2191; BucksCountyDesignerHouse.org.

May 2-3

Arasapha Garden Club's Annual May Market in Historic New Castle. This garden sale features unusual plants, shrubs and herbs. Benefits the Garden Club. Market Square and at the Presbyterian Church, Christian Ed. Bldg., 2nd St., New Castle. Fri, 9 to 6; Sat, 9 to 3. Free. 302-322-7895; Arasapha.org.

May 3

67th Annual Wilmington Garden Day. A self-guided tour of the Brandywine Valley's



New Hope Garden Tour



Tyler Arboretum Plant Sale



Philadelphia Herb Society of America Herb Sale



Bucks County Designer House & Gardens

Innovative Design Sustainable Landscapes Exceptional Service

*Integrity and Passion
There is no other Way!*

- Landscape Construction
- Patio, Walks, Walls, and Water Gardens
- Planting
- Annual and Perennial Flower Gardens
- Seasonal Maintenance
- Lighting
- Holiday and Event Services

Come and see our new garden center and gift shop.



320 W Uwchlan Ave.
Downingtown
484.593.4111
LeBeaulandscapes.com

Your Discount Pool Store Above & In-Ground Pools



SALES

- Above Ground Pools
- Chemicals & Water Testing
- Filters/Pumps/Heaters
- Parts - Accessories
- Solar & Winter Covers
- Floats - Toys - Games
- All Size Liners

SERVICE

- Vinyl Liner Installation
- Opening & Closing
- Weekly VAC Service
- Custom Winter Covers
- Emergency Service
- Pump & Motor Repairs
- Heater Repairs/Installation

**Fast Pool
Service!**



Springfield • 1001 E. Woodland Ave.
610.544.2600

Media • 660 W. Baltimore Pike
610.565.0900

www.aquavitapools.com

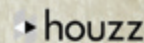
PA License
PA010723

WE BUILD PEACE OF MIND INTO EVERY ROOM.

OUR CRAFTSMANSHIP, PASSION FOR DETAIL AND ABILITY
TO LISTEN WILL LEAVE YOU WITH THE BEST BENEFIT OF ALL,
THE PEACE OF MIND YOU MADE THE RIGHT DECISION.



ARCHITECT - ARCHER & BUCHANAN ARCHITECTURE, LTD.



HISTORIC PRESERVATION | CUSTOM HOME BUILDING | ADDITIONS
RENOVATION | KITCHENS & BATHS

1220 HORSESHOE PIKE • DOWNINGTOWN, PA 19335
484.593.0334 • WWW.ECTBUILDERS.COM

R-P Nurseries

649 UNIONVILLE ROAD, KENNETT SQUARE, PA
Horticulturists Since 1866



- LANDSCAPE PLANTING & CONSTRUCTION
- DESIGNS FOR GARDENS & PROPERTIES
- TERRACES, WALKS, WALLS & MORE
- PLANT CARE & MAINTENANCE
- ORCHIDS & WATER PLANTS
- CONTAINER GARDENING
- FULL-SERVICE GARDEN CENTER
- GIFT SHOP

RICHARD & KATHY PRATT
610-444-1116 • www.rpnurseries.com

CHESTER COUNTY'S BEST KEPT SECRETS TOUR

Antiques • Gifts • Home & Garden • Books • Pottery • Jewelry



Shopping,
food & fun!
May 2-17

Tickets \$8 each

\$1 per ticket benefits the Chester County Pet Food Pantry

484.551.5180
ShopChesterCounty.com

most glorious gardens and gracious home interiors. Rain or shine. Benefits children in need, specifically Friendship House, Inc. and St. Michael's School & Nursery. 10 to 4. \$30-\$35. WilmingtonGardenDay.org.

May 3

Annual Plant Sale at Tyler Arboretum. If you're looking for hard-to-find trees, shrubs, perennials, annuals or herbs, this is the place! As always, you'll find a strong assortment of deer-resistant plants. 515 Painter Rd., Media. 9 to 3. Free. 610-566-9134; TylerArboretum.org.

May 3

Barnes Foundation Plant Sale. A wide variety of plants are offered: Stewartia, magnolias, greenhouse specimens, Japanese maples and monkey puzzle trees. The Arboretum of the Barnes Foundation, 300 N. Latches La., Merion. 10 to 2. Rain or shine. Free. 215-278-7350; BarnesFoundation.org.

May 3-4

Delaware Nature Society Native Plant Sale. More than 300 rare, unusual varieties of native wildflowers, trees, shrubs, ferns and aquatic



A Day In Old New Castle



Wilmington Flower Market



Demuth Garden Tour

plants are for sale. Some are introductions from the nearby Mt. Cuba Center and many species attract wildlife. Coverdale Farm, 543 Way Rd., Greenville. Sat, 10 to 4; Sun, 11 to 4. Free. 302-239-2334; DelawareNatureSociety.org.

May 3-4

Plant Sale at Rushton Farm. Vegetable, flower and herb plants grown organically by Rushton Farm staff are offered for sale. Rushton Woods Preserve, Delchester Rd., just S of Goshen Rd., Newtown Square. 9 to 3. Free. WCTrust.org.

May 3-4

Jenkins Arboretum & Gardens Plant Sale. One of the largest area plant sales, the arboretum has perennials, wildflowers, ferns, azaleas and more. Sponsored by the Valley Forge Chapter of the American Rhododendron Society. 631 Berwyn Baptist Rd., Devon. 9 to 3. Free. 610-647-8870; JenkinsArboretum.org.

May 3-June 1

Community Art Center's Designer Show House. A select group of area interior designers, decorators and landscape designers renovate the space, transforming the historical property into a modern show-stopper. Harvard House, 718 Harvard Ave., Swarthmore. Wed, Fri, Sat, 10 to 5; Thurs, 10 to 7; Sun, noon to 5. \$20-\$25. 610-566-1713; CACDesignerHouse.org.

May 8

75th Anniversary Herb Sale of Phila. Herb Society of America. Herbs, vegetable seedlings and rare and unusual scented geraniums and salvias for sale. To celebrate their Diamond Jubilee, the Society will be presenting gifts throughout the day. Historic Yellow Springs, Art School Rd., Chester Springs. Herbal brunch, \$15, res. only. 10 to 1. 610-970-5264; HSAPhiladelphia.org.

May 8-10

94th Annual Wilmington Flower Market. Benefits nonprofit children's agencies in Delaware. Carnival rides, art, plants, gifts, live entertainment. Rockford Park in Wilmington. Daily, 10 to 7. Rain or shine. 302-995-5699; WilmingtonFlowerMarket.org.

May 9

Annual National Public Gardens Day. A nationwide effort to raise awareness of our public gardens and the value they add to our communities. Many area gardens participate, including Tyler Arboretum,

Chanticleer, Scott Arboretum, Mt. Cuba Center and more. Visit NationalPublicGardensDay.org.

May 9-10

27th Annual Landis Valley Museum Herb & Garden Faire. Stands of over 80 vendors of heirloom plants, roses, native and hard-to-find plants, annuals, perennials and art for the garden, spread over the historic village area. 2451 Kissel Hill Rd., Lancaster. 9 to 5. \$12. 717-569-0401; LandisValleyHerbFaire.org.

May 10

Willistown Conservation Trust 2nd Annual Barns & BBQ. Five of Willistown area's most beautiful barns and farms are on this tour, followed by a bountiful barbecue. The tour of four barns begins at 2:30; at 5:30 barn number five opens for tours, cocktails and hors d'oeuvres; and the barbecue begins at 7. \$250. Advance registration required. 610-353-2562; WCTrust.org.

May 10-11

33rd Annual Brandywine Museum Wild-



Equestrian facilities, home additions, custom garages, restoration work, quality custom buildings of any kind.

Serving Chester County and surrounding areas for over 12 years.

For a free consultation call today 717.768.3200

WWW.PRECISEBUILDINGS.COM

FLOWING SPRINGS LANDSCAPE DESIGN, INC.

Let Our Talented Designers Unlock Your Property's Full Potential



*Serving the Main Line &
Surrounding Areas for 30 Years!*

Creative Design • Custom Building • Historic Restoration
Patios • Walks & Stone Walls • Quality Nursery Stock • Custom Swimming Pools
Natural Stone Work • Professional Tree & Shrub Pruning and Care
Ponds & Water Features • Landscape Lighting • Total Property Maintenance

EXCELLENT REFERENCES

610.408.0739

Richard T. Burns, Horticultural Designer, Owner

426 Old Conestoga Road • Malvern, PA 19355
www.flowingspringsdesign.com ~ rtburns426@gmail.com



PA 100172

How to Achieve a Gold Medal Garden...

Start with High Performance Plants from Mostardi!

We stock flowers, shrubs and trees that are recommended by the Pennsylvania Horticultural Society's "Gold Medal Award" program.

- Gorgeous Colors
- Exceptional Values
- High Quality
- Superior Performance

Expect the best from Mostardi plants. They are good as gold!

Distinctive Plants • Home & Garden Accents
MOSTARDI
N U R S E R Y
4033 West Chester Pike (Rte.3)
Newtown Square, PA 19073
610-356-8035 • www.mostardi.com

flower, Native Plant & Seed Sale. Hundreds of varieties for sale to benefit Brandywine Conservancy's native plant gardens. Staff will answer questions. Brandywine River Museum, Rt. 1, Chadds Ford. 9:30 to 4:30. Free. 610-388-2700; Brandywine-Museum.org.

May 11

Welkinweir's Mother's Day Tea & Azalea Bloom Walk. Grab your camera and stroll through the colorful flowering gardens, azalea collection, and historic estate house at Welkinweir. Enjoy tea on the terrace while taking in the view. 1368 Prizer Rd., Pottstown. Adv. res. req. Seatings: 12:30 to 2; 2 to 3:30. \$22; 6-12 years, \$6; under 6, free. 610-469-7543; Welkinweir.org.

May 14

40th Shipley School Secret Gardens Tour. Tour gardens and enjoy a catered lunch, boutique shopping and *plein air* art. Boutique and Art Gallery at lunch site, with seated buffet lunch, \$25 (res. req.). Box lunch, \$15. Tour, \$45. 9 to 3. 610-525-4544; ShipleySchool.org/SecretGardens.

May 17

A Day In Old New Castle. The 90th annual celebration, featuring strolls in carefully tended gardens, historic homes and public buildings, plus antique cars, period music and dance. Shuttle from the First Baptist Church in New Castle (Rts. 141 & 273) to the Green in Old New Castle. 10 to 5. \$5-\$20. 877-496-9498; DIONC.ImmanuelEpiscopal.com.

May 17

Scott Arboretum's Unusual Tropicals & Annuals Sale. Create a tropical paradise in your backyard with plants from this sale. Experts on hand to answer questions and give demonstrations. 500 College Ave., Swarthmore. Noon to 3. Free. 610-328-8023; ScottArboretum.org.

May 18-June 7

Designer Showhouse & Gardens at Ware Mansion. See article in this issue.

May 28

Scott Arboretum At Home Series: Private Gardens in Bryn Mawr and Rosemont. Two private gardens open to visitors, each offering delightful vistas and surprises, innovative ideas, sculptures and structures. This is a "drive on your own tour,"

9:30 to noon. \$60. 610-328-8025; ScottArboretum.org.

June 7

Annual Bayard Taylor Home & Garden Day. This year's homes and gardens feature historic architecture and innovative interior design, as well as stunning gardens, all located in the Centerville, DE area. Local vendors provide tastings and beverages at the homes. Lunch available at Winterthur, 11 to 2. Lunch tickets must be purchased in advance, \$18. Benefits Bayard Taylor Memorial Library. 10 to 4. Tour, \$35. 610-444-2702; BayardTaylor.org.

June 7

New Hope Historical Society's 21st Annual Garden Tour. Six private Bucks County gardens are on this self-guided tour. Benefits the Parry Mansion Museum in New Hope. Map, directions and description of gardens with ticket. 10 to 4. \$35. 215-862-5652; NewHopeHS.org.

June 7

Coop Snoop & Garden Tour. A self-guided tour of some of Chester County's unique roosts with stops that include hen houses, beehives, outdoor art, water features, kitchen gardens and outdoor kitchens. Benefits Chester Springs Library. Meet at Gardner's Landscape Nursery, 535 E. Uwchlan Ave., Chester Springs for breakfast, a workshop and to pick up tour map. 8 am to 1. \$35. 484-202-8147.

June 13-15

31st Annual Demuth Garden Tour & Party. See several exclusive Lancaster locations, with a variety of urban gardens and unique home interiors. The tour kicks off with the Demuth Garden Party on June 13, featuring live music, hors d'oeuvres and silent art auction at The Conestoga House Gardens, 1608 Marietta Ave., Lancaster. Res. req. Tour, Sat, 10 to 5; Sun, 11 to 5. \$15-\$18. 717-299-9940; Demuth.org.

June 21

DE Center for Horticulture: Wilmington City Gardens People's Choice Tour. If you love to peek inside other people's gardens, this self-guided tour to 50+ gardens in the city is a must. Some are past winners in the City Gardens Contest. 1810 N. Dupont St., Wilmington. 10 to 3. Free. 302-658-6262; TheDCH.org. ♦



Coop Snoop & Garden Tour

DE Nature Society Native Plant Sale

Handcrafted Gardens ... One at a Time

- Design/Build
- Water Gardens
- Landscaping
- Gardens Restored
- Natural Stone
- Lighting
- Pond Management
- Maintenance

Steven Katz
Owner Always On Your Site

Schedule our unique and personalized tour of your garden environment

For an inspiring conversation call: **610.996.3248**

LAND & SEASCAPES



Celebrating Over 30
Years of Service in
Your Neighborhood

Enjoy our video and gallery of extraordinary gardens at
www.LandandSeascapes.com

Heritage
Design Interiors Inc.

Showroom hours: Mon. - Fri. 10-5 • Sat. 10-2
Call us at 717-354-2233
1064 EAST Main St. (Rt. 23) New Holland, PA
www.HeritageDesignInteriors.com

SPECIALIZING IN:

- Valances/Draperies
- Bed Ensembles
- Floral Designs
- Blinds/Shades/Shutters
- Accessories/Lamps
- Art/Mirrors
- Color/Design Consulting for New Construction & Renovation
- Consultations for Paint Colors, Furniture & Floor Selection

Great Selection of Window Treatments and Home Decor

Horse Barns

EQUESTRIAN FACILITIES & TIMBER FRAMES



Horse Barns



Indoor Arenas



Bank Barns

B&D Builders

Request a quote at
717.687.0292
or visit our website

Discover More at CustomBarnBuilding.com

B&D Builders exceeds expectations. A full-service, custom builder based in the heart of Pennsylvania Dutch Country, B&D uses a combination of premium quality materials, skilled craftsmanship; and innovative engineering and design to improve your equestrian experience. Specializing in custom barns, riding arenas and timber frames, B&D delivers an unmistakable eye for design and attention to detail. If you want the best, you want B&D.

GIUSEPPE's Kitchens & Baths

COMPLETE RANGE OF QUALITY SERVICES FROM
IN-HOUSE DESIGN TO INSTALLATION
CONTACT US FOR A FREE DESIGN CONSULTATION!



Visit our West Chester showroom to review a wonderful collection of Marble, Granite, Quartz, Tiles, Cabinets, Tiles and Backsplashes...and meet our Design Team

GIUSEPPE
Kitchens & Baths

129 East Gay Street, West Chester, PA
610.436.8161
www.GiuseppeKitchenAndBathDesign.com

Granite Special! \$3899
SQ. FT.

Dutchie's Stone Works, LLC




- Patios
- Outdoor Living Spaces
- Fireplaces
- Historic Restoration
- Custom Homes
- Additions
- Retaining Walls
- Pool Decks

Stone • Brick • Block • Pointing

Dave Fisher • 717-587-8789
www.dutchiesstoneworks.com

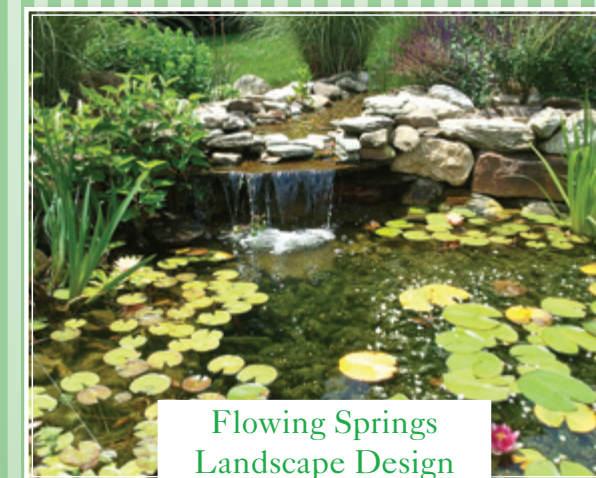
DESIGN

Landscape & Garden



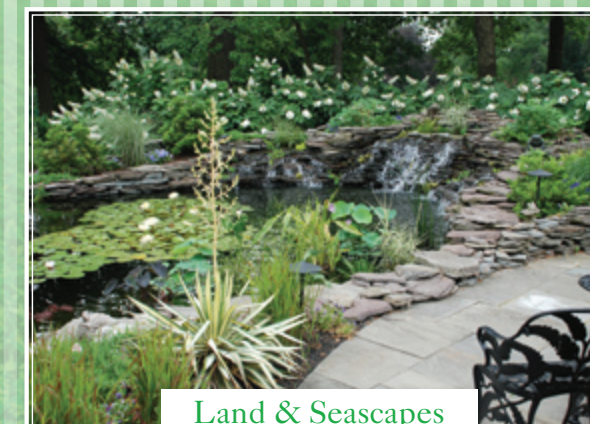
Le Beau Landscapes, LLC

484-593-4111 ★ LeBeauLandscapes.com



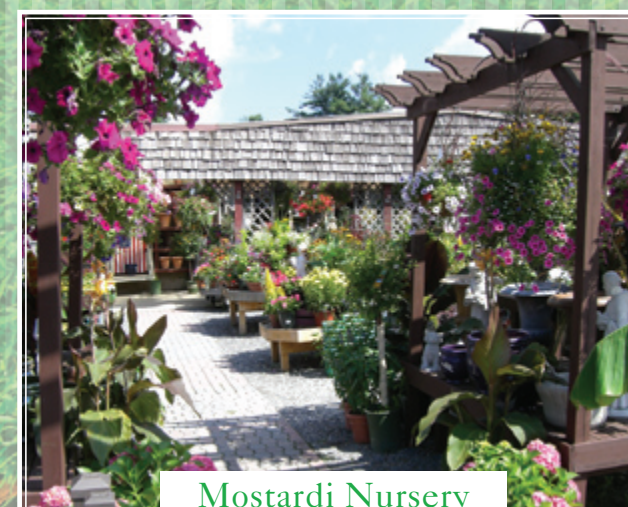
Flowing Springs
Landscape Design

610-408-0739 ★ FlowingSpringsDesign.com



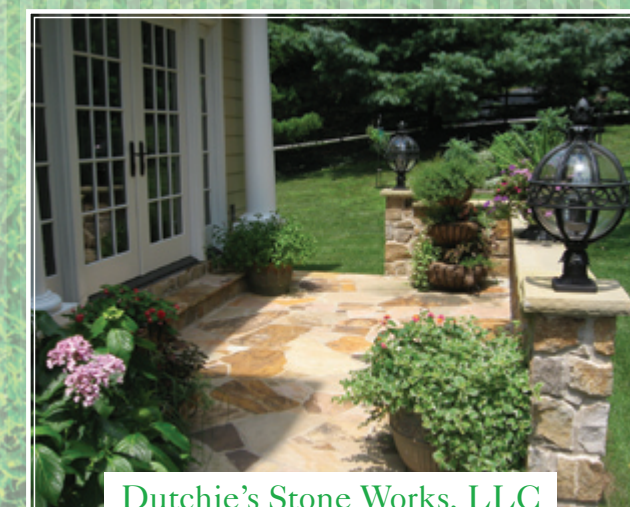
Land & Seascapes

610-996-3248 ★ LandAndSeascapes.com



Mostardi Nursery

610.356.8035 ★ Mostardi.com

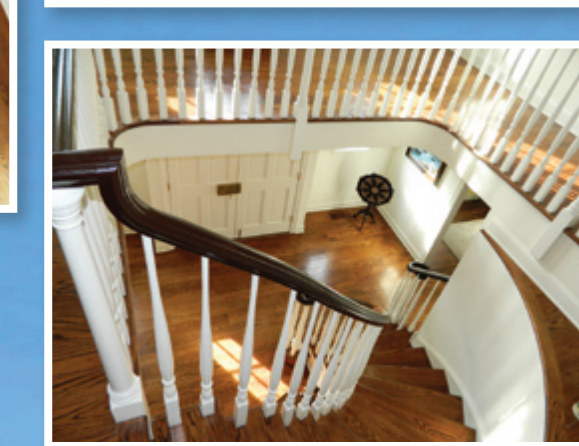
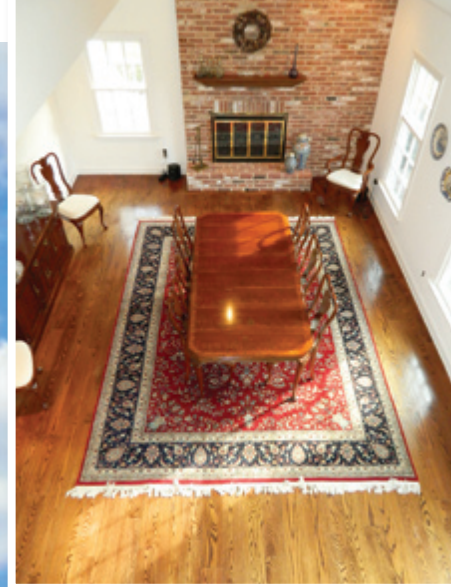


Dutchie's Stone Works, LLC

717-587-8789 ★ DutchiesStoneVorks.com



HOME OF THE MONTH



Still Meadow

Laurel Anderson

As tranquil as its name, a special property in Willistown Township

Chester County has pockets of properties that trace their histories back to the days when roads were named for what you saw—Hillview—landmarks you passed—Grubbs Mill—and local farms—Hunting Hill Farm. And Willistown Township is ripe with these picturesque names, often marked by a wrought iron sign, like the one for Still Meadow Lane.

Down a private drive, the unique property on Still Meadow Lane is part of a former family compound that extends to Kirkland Preserve in the heart of Radnor Hunt Country, just off Providence Road. This 4.5-acre parcel benefits from the many neighboring properties under conservation easement, so its privacy and viewscapes can never be altered by encroaching development.

Equally fortunate, this completely updated Colonial Williamsburg-style four-bedroom, three-and-a-half-bath home shares the warmth and charm of traditional design yet is full of upgrades and modern amenities for easy living. The best of county living, yet still convenient to the city by train or car.

Spring at Still Meadow

Now bursting with spring color, the property showcases its specimen trees and perennial gardens designed by Naturescapes Landscaping. Daffodils reflect the dappled light around the stately red maple anchoring the circular drive, as an elegant espaliered dogwood decorates the brick-walled garage. Weeping cherries and deciduous sequoias accent the front yard, while glorious perennial

gardens surround the pool, four-season spa and koi pond in back.

Because the owners were designing their dream home, the once-modest 1980s Colonial-style home was taken down to the studs during its 2002 renovation. Top-quality materials were used throughout—red oak hardwood floors, Carrera marble baths, energy efficient doors and windows, upgraded plumbing, heat and electrical systems, plus WiFi, surround-sound, in-wall-vac and more. E.B. Mahoney Builders created the new look and added two, two-story additions designed by AIC Architects.

The result is a beautiful, livable, light-filled, energy-efficient, low-maintenance home that maximizes the pleasure of this special property and minimizes future upkeep.

Main Living Level

Take the brick walkway through the double front doors to arrive in the two-story foyer with stunning grand staircase marked by graceful curves—your first hint of the improvements within. The feeling of height continues into the two-story dining room to the right, with brick fireplace extending to the ceiling creating a dramatic setting for elegant entertaining.

Through a gracious archway to the foyer's left is the living room, now expanded to include a music room—home to a baby grand piano and marked by columns that reflect the detail of custom moldings. South-facing windows and a fireplace add charm to the living room, as French doors to the brick patio draw your eye outside. An adjacent library, with exposed brick wall from the original home, is next door and has access to the patio through more French doors.

Pass a powder room and head to the cozy breakfast room with morning light and views to the pool gardens out back. French doors



entice you to take coffee to this second patio to savor each country morning.

Next is the kitchen, so charming it was the only part of the home not completely redone. Classic cherry, raised-panel Rutt cabinetry gives warmth to the space. Built-in desk, double sinks under the windows, and new, upgraded appliances (Jenn-Aire, KitchenAid, Sub-Zero) make any cook happy.

The adjacent laundry room and mudroom with tile floors are family- and pet-friendly, as is the electric pet fence. Just outside is a sheltered deck, capturing sunlight in this protected space next to the two-plus car garage. Ivy-covered brick walls, flowering planters and Adirondack chairs create another spot for sipping coffee or a glass of wine.

The final stop on the first floor is the modern, light-filled great room at the rear of the home. Its walls of windows frame the views to the gardens and French doors

lead to the patio off the breakfast room. A window seat and massive fieldstone fireplace draw family and friends to this space, while a handy back stairway allows escape to the master suite upstairs.

Second Floor Sanctuary

A spacious master suite checks off features on most dream lists: windows on three sides with country views, a cozy window seat, built-in closets plus a walk-in closet with more built-ins, and plenty of privacy. An ensuite master bath features a soaking tub with more views, plus luxurious details like Carrera marble floors.

Two more bedrooms—one with sound-proofing and projection TV—and two full baths and a guest room/home office with gas fireplace round out the second floor.

Ample storage in the large, unfinished attic is accessible from this floor.

Media Room, Game Room, Gym and More

You may not be prepared for the expanse of the lower level, housing the updated mechanical systems and so much more. The big-screen TV, pool table and foosball table are dwarfed by this large space with a walk-out to the side yard. A separate room, with glass doors, could become a gym or guest bedroom. So much room inspires many options.

You'll find that Still Meadow offers privacy and expansive, protected views along with all the comforts and amenities of the 21st century. ♦

This special Willistown property is offered by Berkshire Hathaway/Prudential Fox & Roach/Devon/Fine Homes, 610-651-2700. For information, contact Missy Schwartz, 610-888-3349.

Photography by Faith West

Wedding Elegance
by
Matlack Florist
SINCE 1978 country elegance in flowers & gifts

210 N. Chester Rd., West Chester, PA
610-431-3077
www.MatlackFlorist.com

fancy yourself...
elegant

Full Service Interior Design Firm
Complete General Contracting Services
Furnishings & Accessories Collections
Real Estate Staging

We create interiors that *reflect you*

610-459-4383
CaroleLeeInteriors.com

ALLIED MEMBER
ASID | IIDA

Carole Lee Interiors
RESIDENTIAL | COMMERCIAL

A RARE BREED OF PROFESSIONALS, AN UNCOMMON LEVEL OF SERVICE.

PA HIC #PA9550

GRIFFITHS CONSTRUCTION INC.

851 Kimberton Road | Chester Springs PA 19425 | 610.827.7990 | www.griffithsconstruction.net

Summer in a Glass

Jane Gallagher

START SUMMER OFF RIGHT WITH THESE SWEET, SPILLABLE COCKTAILS.

Catch me before five on a Friday afternoon and you'll find me fidgety and ready to start the weekend. Chances are you feel that way, too. There's something about TGI-summertime that makes being inside less bearable.

Make no mistake—I'm excited for beach trips, road trips and all the seasonal fun that kick starts summer. But I'm also in the mood for something with a bit more of a kick—something that will make being inside for most of the day worthwhile when I finally get to venture out.

Choose Gin?

When I think summer, I think gin. In fact, summer doesn't start until the first gin and tonic has been stirred. Served over ice, G&Ts for some are better as T&Ts—Tanqueray and Tonic.

But I prefer to stick to my local roots, which is why I'm a fan of Bluecoat American Dry Gin, made right here in Philadelphia. Bluecoat is perfect for gin drinkers with a fondness for a citrus flavor and a preference for all-natural choices. It's far from a one-note affair, though. Flavored with a combination of organic juniper berries and handpicked organic botanicals, it's a modern American-made spin on a classic Dutch spirit. B&Ts anyone?

If you're in the mood for some sparkle with your fireworks, try a gin fizz on for size. This tasty twist calls for soda water instead of tonic, super fine sugar and lime juice. Serve over ice in a taller glass and you've got a Tom Collins.

Our Spring equestrian season offers more opportunity for gin sipping because where there are horses there are Pimm's Cups—or there should be. A polo mainstay, this cocktail is made with the English liqueur, Pimm's No. 1 Cup. The fruity liqueur, with an English gin base, is best served with lemonade, fresh-sliced fruit, and a cucumber slice to stir. If you prefer bubbles, like I do, switch out the lemonade for ginger ale.

A final idea: If it was good enough for Orson Wells, it's good enough for me—when it comes to drink recommendations anyway. Not yet a classic, the Negroni is a must-try this summer and worth adding to your bartending repertoire—as a top 10 drink every gentlemen should know how to make, or so says *Esquire Magazine*.

Made with gin, sweet vermouth and Campari, and garnished with an orange slice, the Negroni's sweet/tart combo is perfect poured over ice. According to Wells, "The bitters are excellent for your liver, the gin is bad for you. They balance each other."

I can't think of a better way to balance out summer sipping.

Or Tequila?

Tequila may have developed a bad reputation, but if used responsibly, the Mexican liquor is perfect to pair with an evening outside under the summer sky.

Traditionally, tequila is served neat, without lime and salt. But I'm partial to tequila in frozen summer sippables like margaritas. If you want to see how the experts whip up this frozen concoction, *County Lines* country has an array of restaurants specializing in tequila, like Más Mexicali Cantina in West Chester. Their drinks run the gamut, from the fresh-shaken Black Raspberry Margarita, to the frozen Más Margarita. A tempting menu, too, so you can eat as you imbibe.

While some think tequila is best served after sunset, don't rule out having it with a sunrise. A tequila sunrise, of course. Made with orange juice and grenadine, this tasty temptation is colorful, too.

If all the excitement tires you out, try a siesta. Made with white tequila, Campari, lime juice, simple syrup and grapefruit juice, the siesta blend is the perfect balance of bitter, sour and sweet. Served best over ice.

Who doesn't like naps in the summer?

Maybe Wine?

If you didn't know already, Pennsylvania wine is coming into its own. (For more, check out our July 2013 issue.) Known for its sweet, refreshing blends, local wine is perfect for making sangria.

Traditionally made with red wine, sangria is a grown-up version of fruit punch. Combining seasonal fresh fruit—like strawberries, apples, grapes—sugar and lemon-lime soda, the best part of this basic summer drink is that it's as easy to make as it is to drink! Great at summer parties—just double your usual recipe, stir everything together and serve cold.

For a lighter version, swap out the red for white wine and add oranges, white grapes and peaches for a citrusy twist. Most local

wineries have their own unique take on this versatile drink so check their websites and ours for more ideas.

Whether you're grilling, tailgating, entertaining, or just lounging out back, these summertime cocktails are sure to get your season started right. Is it five o'clock yet? ♦

For cocktail recipes, visit us online at CountyLinesMagazine.com or on Foodily, @CountyLinesMagazine.



Every Woman deserves a superior custom fitting bra



Chestnut Village Shoppes
36 Chestnut Road
Paoli, PA
610.296.7626
www.giegielingerie.com

Gina Mastrangelo, CFm, Owner

Gie Gie
lingerie & breast care

Simplify Your Dinner Routine



Convenient, healthy, family-style meals for busy people.

We also cater spring events (showers, graduation parties, holy communion celebrations, etc...)

ORDER AHEAD TO SUIT YOUR SCHEDULE!



www.chefanti.com
610.429.0467

211 E. Market St.
West Chester PA
take-out / delivery / catering

Wolff's Apple House
Farm Market & Garden Center

VEGETABLES TOMATOES
Peppers EG Sweet Peppers

Fresh, Locally Grown Produce & Plants
Farm market & garden center featuring thousands of plants & the region's best selection of fresh, locally grown produce.

<p>Vegetable & Herb Plants</p> <ul style="list-style-type: none"> • 160 varieties tomato plants • 80 varieties of pepper plants • hundreds vegetable & herb plants • hybrid, heirloom & grafted varieties 	<p>Flowers:</p> <ul style="list-style-type: none"> • annuals • perennials • hanging baskets • succulants & more!
------------------------------------------------------------------------------------------------------------------------------------------------------------------------------------------------------------------------------------------------------------------------	-----------------------------------------------------------------------------------------------------------------------------------------------------------------------

www.WolffsAppleHouse.com

81 S. Pennell Rd. - Media, PA - 610-566-1680

Dining Out

AMANI'S BYOB

105 Lancaster Ave, Downingtown
484-237-8179 • AmanisBYOB.com



Baked Ham and Eggs



Spinach Salad

Lise Monty

Brunch at Amani's, celebrating its fifth successful year in June 2014, charmed us with its homey/chic personality and sophisticated/savory fare. It launched our Sunday on a high note. So did the realization that soon we'd be blessed with warm weather (which, it's safe to assume, has arrived when you're reading this) and the opportunity to dine out front at sidewalk tables. Al fresco dining for Saturday brunch as well as Sunday—another good thing. This is an excellent choice for a Mother's Day gathering or graduation celebrations. Or for no other reason than it's the end of your week. Or the beginning.

We knew that owner/chef Jonathan Amann was a champion at nurturing relationships with local farmers and showcasing their products in his cuisine. And, that he had won three consecutive "Best Chef in Chester County" awards at the annual Chester County Restaurant Festival. So our expectations were high. And they were met. Totally.

The white picket fence—a real one that extends against one wall from front to back of the small, inviting dining room—sends a message: Slow down and savor every bite. The fence suits the subtle decorative tones of springtime green and sunrise orange that create a laid-back mood in the 40-seat dining room. The space is accented with touches of dried grass arrangements, fresh flowers and wall lighting with leaf-shape designs. Crisp white cloths cover the tables, and the kitchen is open.

First Things First

Simple yet sophisticated, the *Roasted Beet Salad* (\$12) presented stand-alone slices of the sweet vegetable on one side of the white rectangular plate. On the other side: a sassy toss of local garden greens, port-soaked cherries and morsels of honey-infused chèvre, dressed with a super herb vinaigrette. The finishing touch: two perfect circles of zippy purées, one port-soaked cherry, the other mint. We guessed they'd been created with a cake-decorator's funnel.

Other choices from the Soups and Salads menu: smoked spring onion soup; baby spinach salad with gorgonzola, fried egg and sherry Dijon vinaigrette; and baby arugula with grilled leeks, tomato confit and feta with roasted garlic dressing.

My oyster-loving companion relished the *Grilled Oysters Amani* (\$10), one of the restaurant's most popular dishes. Mai-take mushrooms, aged Parmesan, wilted spinach and pancetta crowned the three beauties in their shells. Other appetizers included braised Berkshire pork belly, potatoes Dauphine, "Bloody Mary" crabcake, smoked chicken hush puppies and peppers stuffed with lump crab.

The *Fresh Baked Bread Selection* (\$6) included two big, top-notch muffins, one blueberry and one corn, each split and grilled to a satisfying crunch. They came with a delicious pineapple purée and a fresh strawberry spread to add to the fun.

HERR'S snack
FACTORY TOUR



FUN!
FREE!

1-800-63-SNACK
WWW.HERRS.COM



The Herr's name and logo are registered trademarks of Herr Holdings Inc. "Herr's Snack Factory Tour" and logo are trademarks of Herr Holdings Inc. and are used under license. ©2011 Herr Holdings Inc. All rights reserved.

We chided ourselves for having forgotten to bring vodka for Bloody Marys (BYOB is in Amani's name, after all), but enjoyed the excellent mix anyway. It represented well the menu of enticing house-made mixers, such as the Tangerine Mango Martini blend of Triple Sec, two fruit purées and Sprite or the White Peach and Ginger Martini blend of Triple Sec, white peach and ginger purées and orange juice. Each mixer is \$3.50. Good news for wine drinkers: There's no corkage fee.

French Toast, Cuban Sandwich

International influences add to the broad appeal of the menu's wide variety of choices. *Scottish Salmon BLT Wrap* (\$12) elevated the popular sandwich type to a higher level. Large chunks of delicious pink salmon mixed it up with bites of house-made smoky bacon, creamy avocado, baby spinach and tomato. All were lightly dressed with a sherry Dijon vinaigrette and neatly wrapped in a tasty tomato-flavored flour tortilla. *Rock*

Shrimp Omelette (\$16), brimmed with the shellfish, sautéed leeks, melty mozzarella and cherry tomatoes. The dollop of basil pesto, placed on the plate in the perfect-circle style, did its color/zesty thing. It was a delectable dish.

Other entrée options: Eggs Benedict with roasted pork belly and smoked-butter Hollandaise; Cuban sandwich with braised pork, ham, Swiss, spicy Dijon and house-made pickles; banana hazelnut pancakes with crème Anglaise and vanilla-bourbon maple syrup; Caribbean-spiced Florida grouper sandwich with micro greens, tomato, onion and key lime aioli on a brioche bun; dark chocolate Belgian waffle with pineapple compote, coconut whipped cream and vanilla-bourbon maple syrup; baked ham and eggs with roasted Kennett Square mushrooms, goat cheese and smoked butter hollandaise; and smoked chicken flatbread with roasted peppers, mushrooms, black bean purée, scallions and aged cheddar.

Sweet Things

Chocolate Pot de Crème (\$7.50) was a true French-style custard served in a traditional baking dish. Rich, dense and designed for dark-chocolate lovers, it was topped with a dollop of whipped cream plus strawberries and blackberries. We took small bites to make it last longer. Talented dessert maker Heather Stickland is Amani's pastry chef.

Other desserts (each \$7.50) included caramel/mocha cheesecake, frozen white chocolate peppermint bombe, Bosc pear and cranberry bread pudding, cinnamon crème Anglaise, dark chocolate torte, caramel apple torte and blood orange crème brûlée.

Nearby Chester Springs creamery keeps Amani's freezer stocked with its popular ice cream. The assortment of flavors changes with the seasons. Among the popular creamery's flavors that could make the list: Summer's Sweet Strawberry, Joy's Peanut Butter Fudge, and Snicker's Heavenly Sundae. They all sound good. ♦

Owners: Chef Jonathan and

General Manager Jeanine Amann

Dinner: Monday-Thursday, 5 to 10 p.m.

Friday-Saturday, 5 to 10:30 p.m.

Sunday, 5 to 9 p.m.

Lunch: Monday-Friday, 11:30 a.m. to 3 p.m.

Brunch: Saturday-Sunday, 10 a.m. to 2 p.m.



CATERING FOR ANY OCCASSION
social affairs • corporate events • weddings



AT YOUR PLACE...
with our off-premise catering division



...OR OURS
at any of our three distinctive
in-house venues

customized menu • beverages and liquor • waitstaff
linens • tables • chairs • silverware • stemware • tenting and all rentals



when taste matters

ROBERTRYANCATERING.COM • 610.933.6336

interior masterpieces®



Choose from thousands of fabrics from the Select Masterpieces™ and we'll help you create the room of your dreams. But, hurry, the savings are too big to keep under wraps!

★ 3 Day Private Sale May 22-24 ★
★ 20% off most Lafayette Custom Designs ★
★ Free Design Consultations ★

705 E Gay St., West Chester, PA 19380 • 610 429-9773

BoylesFlooring.com



LAFAYETTE
interior fashions



Boyle's
Floor & Window Designs

THE CHANGE OF ADDRESS THAT'LL

change Mom's life



Imagine if, instead of spending time taking Mom or Dad to the doctor and keeping their house in order, you could simply enjoy your time together? At Exton Senior Living, we change families' lives every day by helping them do just that.

VISITS ARE MUCH MORE WONDERFUL
WHEN YOUR PARENT'S ADDRESS IS...

EXTON SENIOR LIVING

600 North Pottstown Pike • Exton, PA 19341

Personal Care • Memory Care

EXTON
SENIOR LIVING

FIVE STAR SENIOR LIVING

610-594-0200

www.ExtonSeniorLiving.com

©2014 Five Star
Quality Care, Inc.



Enjoy the Finest Village Living for 55+ Active-Adults in Chester County

We Love Hershey's Mill ... You Will Too!



- ♦ Gated 24/7 Security
- ♦ Championship Golf Course
- ♦ Maintenance-Free Living
- ♦ Convenient to Local Shopping
- ♦ Beautiful Community Center



- ♦ Walking Trails
- ♦ Over 35 Clubs
- ♦ Heated Pool
- ♦ Homes from \$150K to \$600K
- ♦ Theater, Arts & Sports Groups

Call about
our next
Community
Open House

HersheysMill55Plus.com

1500 Greenhill Road, West Chester, PA 19380

Call 610-436-8900 x217

Sausage & Peppers

RON'S

ORIGINAL BAR & GRILLE
EST. 1990
Serving Real Food for the Health of It

Offering a Made from Scratch menu with Gluten Free and Antibiotic/Hormone Free Choices

2013 Best Main Line
2013 Clipper Magazine 25th Annual Taste of Chester County Winner
2013 Best
2013 Suburbanite Golden Fork Award Winner
2013 Suburbanite Best!

Dine-In, Take-Out, Catering & Delivery
74 E. Uwchlan Avenue - Exton, PA 19341
610.594.9900
www.ronsoriginal.com

TAVOLA

RESTAURANT + BAR

400 W. Sproul Rd. | Springfield, PA 19064 | 610.543.2100

eat drink relax

Best Address Dining
Best

- Fire Pit Lounge Areas
- Live Entertainment + Weekly Specials
- Seasonal Al Fresco Dining
- Brick Oven Specialties
- Sunday Brunch
- Seasonal Food + Drink Menus
- Full Service Indoor + Outdoor Bars

www.TAVOLAS.com

Witmer Quilt Shop

Over 50 years in business
Many of Emma's own designs
Over 100 quilts in stock
Custom colors and patterns

1076 West Main St. • New Holland, PA
Mon. & Fri. 8 to 8, Tues., Thurs. & Sat. 8-6
all major credit cards
717-656-9526

SURREY

CONSIGNMENT SHOP

Vintage Jewelry • Fabulous Furniture
Eclectic Accessories

And lots of fun finds!

810 Lancaster Avenue, Berwyn
610-647-8632

Proceeds from purchases help support programs and activities for seniors in our community.

Food News

A few of our favorite things to share this month about local food and drink

High Tea and Lady Mary.

To cap off a perfect day after visiting the “Costumes of Downton Abbey” exhibit at Winterthur, pop over to **The Hotel du Pont** for the elegant **afternoon tea**. Starting at 3 p.m., you can nibble delicate tea sandwiches with smoked salmon and truffled egg salad, sample treacle scones, and delight in plates of pastries as you sip the Estate Teas. Dine like the Crawleys while enjoying the splendor of the Hotel's Green Room, complete with shimmering drapes, gold chandeliers and original oil paintings. HotelDuPont.com.



Food Phight 5K.

Extend your Mother's Day celebration this year and benefit your mother's health while supporting a good cause. Do more than make Mom breakfast in bed—join her in a 5K run! West Chester is hosting CHOP's **4th Annual Food Phight 5k** on May 16 to find a cure for Eosinophilic disease, an autoimmune disorder related to food allergies. The race starts at 6:30 p.m. with an after-party at Barnaby's with free food, drinks and live music for participants; \$25 at the door for spectators. Register now! Giving.CHOP.edu.



Strawberry Fever.

The start of summer means strawberry festival season. These berrylicious events are a summer tradition for local families and communities. With festivals in Bucks County at Peddler's Village and closer to home supporting **The Brandywine Hospital**, you'll find ways to satisfy your strawberry cravings from short cake to sherbet. The Hospital's festival also offers Greek, Cajun and Italian food plus barbeque and more food choices, along with rides, activities and family fun on the midway. BrandywineStrawberryFestival.com.



Butchers and Bluegrass.

Honey Brook's **Wyebrook Farm** gives you quality music as well as Chester-County raised, hand-butchered meats at their market and seasonal café. They'll even teach you about the specialty cuts and how best to cook them. But that's not all! Recently the host of a bluegrass festival—with Jessie McReynolds and the Travis Wetzel Trio—Wyebrook holds special events with live performances all year round. For the upcoming schedule, check WyebrookFarm.com.

Craft Beer: Fact or Fiction. One of the fastest growing trends in the beer world is finding and drinking crafts beers. But with all the names, brands and varieties foaming around, how can you tell which are authentic, artisanal brews and which are just a label from a multinational conglomerate? The **Craftcheck app** lets beer fans tell if the beer they're drinking is from an actual microbrewery. Perfect for those who want to support local, homegrown brews from independent brew makers. Scan the barcode and you'll have your answer. Then users can share their findings on Twitter or Facebook. CraftcheckApp.com.



Winner
“Top 10 Romantic Inns”
Award



3542 Old Philadelphia Pike
POB 598, Intercourse, PA 17534
800.664.0949

www.inn-spa.com



Wayne
724 W. Lancaster Ave.
610-535-4580

Penn Liberty Bank is honored to be a part of the Wayne community. We are a locally owned and managed community bank dedicated to providing unsurpassed customer service to our clients.

Stop by and experience exceptional banking!



Enjoy the 2014 Horse Show and Race Season!

Blue Bell | Chester Springs | Downingtown | East Goshen
Limerick | Malvern | Paoli | Trooper
Opening Spring 2014 Oaks Branch!



WWW.PENNLIBERTYBANK.COM



Summer
is coming...



Shopping • Dining • Events • Family Fun

COUNTY LINES MAGAZINE is your guide to the best in Chester County and Beyond!



Main Dish Salads

Laura Muzzi Brennan

Oh, the possibilities ...

Salad's come a long way. In ancient times, it was an unassuming side dish of raw vegetables dressed with oil, vinegar and salt. Indeed, the word itself derives from the Latin “sal” meaning salt. Isn't it wonderful, though, what a few millennia will do? With chefs thinking outside the bowl—adding grilled meat here, a little cheese there and experimenting with dressings—salad's earned its place at the center of the modern meal.

While oil and vinegar remain favorite dressing ingredients, they're available in more varieties than ever before. I'm reminded of this when I visit Wayne's **Bella Oliva Taproom** where sales associate Lorie Lynch refers to the gleaming canisters as a “playground for your taste buds.” The numbers back her up: 11 varietal olive oils imported from Europe, South America and Australia; 14 flavored olive oils; 3 specialty oils (sesame, walnut and truffle); and 20+ balsamic vinegars from Modena, Italy.

While I sip my way through intriguing combinations—grapefruit white balsamic with Milanese gremolata extra virgin olive oil (evoo) and pomegranate quince white balsamic with Persian lime evoo—Lynch and co-owner Stephanie Vauclain school me in taproom facts. I learn that young olives contain more antioxidants than older ones; that dark balsamics are cooked and aged longer than their white counterparts; and that

flavored oils may be infused (flavor added post-oil production) or fused (flavor added during production). I leave Bella Oliva with a four-bottle sampler—can't wait to try the blood orange evoo and dark chocolate balsamic—as well as fantastic salad recipes from the store's blog.



Bella Oliva Taproom

Heading west from Bella Oliva on Lancaster Ave., I visit the **Lancaster County Farmer's Market** for further salad inspiration. At **Sassano's Gourmet to Go**, proprietor Jim Corcoran tells me he's noticed that more and more, customers prefer salads dressed with flavored oils rather than mayonnaise. Two bestsellers: lemon bowtie pasta with spinach and chicken along with mushroom agnolotti with radicchio, pine nuts and truffle oil.

Over at **Foo to Go**, renowned restaurateur Susanna Foo offers a variety of satisfying main dish salads including Singapore noodles, Chinese ratatouille,

lemon Parmesan orzo and even a classic Cobb salad. Her Thai Chicken salad gets its crunch from Fuji apples, celery hearts and julienned carrots. It's such a best seller, Foo contends, because she brines the chicken for perfect tenderness.

Variations on a theme of chicken salad also play at **La Delicatessen**. There are curry, tarragon and Veronique versions as well as South Beach chicken salad, a creation of co-owner Lisa Palmieri. Packed with pistachios, onion and cherry tomatoes and flavored with lime juice and olive oil, this salad is a favorite of those both on and off the South Beach diet. Palmieri also makes South Beach tuna salad as well as a penne salad with bacon, tomato and baby spinach.

At **Mainline Marketplace's** grab-and-go case, find classics like chicken Caesar and chef's nestled up against fig-goat cheese, arugula-fennel and berry salads. Seafood and shrimp salads are also available as is the tempting, sure-to-fill-you-up Italian hoagie salad.

Given that salad used to mean a few veggies sprinkled with salt, I understand why Shakespeare's Cleopatra regretted her salad days. But I daresay that if the Bard wrote *Antony and Cleopatra* in 2014, he'd fashion a very different metaphor.



Mainline Marketplace



Lemon Bow Tie Pasta from Sassano's

Warm Spinach and Salmon Salad with Orange-Raspberry Vinaigrette

The folks at Bella Oliva Taproom call this dish "dinner-party worthy." Besides being delicious, it comes together with little fuss so the host can spend more time with guests and less time in the kitchen.

- 1 C. fresh or frozen-then-thawed raspberries
- 1 small shallot, chopped
- 2 Tb. Dijon mustard
- ½ C. fused blood orange extra virgin olive oil*
- ¼ C. raspberry balsamic vinegar*
- Salt and pepper to taste
- 4, 4-oz. salmon fillets
- 4 C. baby spinach
- 1 large navel orange, cut into segments
- ¼ C. scallions, thinly sliced
- ¼ C. slivered almonds, toasted
- * At Bella Oliva or other specialty stores

Put raspberries, shallots and mustard in a food processor or blender. Process until smooth. With the motor running, slowly add olive oil and process until a smooth emulsion has formed. Add vinegar and process until well combined. Taste and season with salt and pepper. (If the dressing is too thick, add a small amount of water to thin to desired consistency.)

Lightly coat salmon with oil and season with salt and pepper. Grill, bake or broil just until done, allowing about 10 minutes cooking time per inch of thickness.

Warm ¾ C. of the raspberry vinaigrette in a small non-reactive saucepan. Save the remainder for another use.

Toss the spinach with the vinaigrette to lightly coat and wilt the spinach. Divide spinach among four plates, then top each with a salmon fillet. Garnish each plate with orange segments, scallions and almonds. Drizzle a little vinaigrette over each piece of salmon.

Makes 4 servings.

Avocado Grapefruit Shrimp Salad

The recipe for this refreshing dish comes courtesy of Bella Oliva Taproom.

What's In a Name?

Curiosity about food's origins has reached an all-time high with restaurants listing farm names on their menus and folks asking whether vegetables were grown organically or using IPM. Just as interesting: the genesis of familiar salads and salad dressings.

Caesar Salad: Legend goes that Caesar Cardini, an Italian immigrant and owner of Caesar's Palace in Tijuana, Mexico, invented this salad on the 4th of July in 1924 with ingredients he had on hand. Some other food historians contend that Beatriz Santini, an Italian living in Austria and the mother of one of Cardini's employees, created it in 1918. Another theory: in 1903, Italian Giacomo Junia, a cook at Chicago's New York Café, named his salad in honor of Julius Caesar.

Cobb Salad: Bob Cobb, the original owner of The Brown Derby in Los Angeles, concocted this salad in 1937.

Green Goddess Dressing: In the early 1920s British actor George Arliss stayed at the San Francisco Palace Hotel while performing in a play called The Green Goddess. He loved the city, claiming its weather gave him a healthy appetite, so the hotel's executive chef Philip Roemer named the dressing after him.

Thousand Island Dressing: In the early 1900s, fishing guide George LaLonde took visitors in search of black bass and Northern pike in the Thousand Islands, an archipelago of 1,864 islands on the U.S.-Canadian border in the St. Lawrence River. LaLonde and his wife Sophia treated guests to dinner, serving salad with this distinctive dressing.

Ranch dressing: At their Hidden Valley Guest Ranch in Santa Barbara, Steve and Gayle Henson invented this dressing in the 1950s. Guests loved it so much that the Hensons gave them bottles to take home.

- ½ small red onion, finely diced
- 3 Roma tomatoes, diced
- 1 clove garlic, finely minced
- 12 oz. cooked and peeled shrimp
- 2 Tb. grapefruit balsamic vinegar*
- 1 Tb. mild traditional extra virgin olive oil or Persian lime or lemon oil*
- ¼ tsp. sea salt
- Freshly ground pepper
- 1 avocado, diced
- ¼ C. crumbled feta cheese
- * At Bella Oliva or other specialty stores

In a large bowl, combine onion, tomato, garlic and shrimp.

In a separate bowl, mix the grapefruit balsamic, extra virgin olive oil, salt and pepper. Drizzle the balsamic-oil mixture over the shrimp salad and toss to coat well.

Add avocado and feta cheese. Gently toss, just enough to combine. For the best flavor, store in the refrigerator for at least 30 minutes before serving.

Makes 4 servings.

Apple Walnut Chicken Salad

You'll never make this salad the same way twice if you experiment with different oil and vinegar combinations. The folks at Bella Oliva suggest the following duos: red apple balsamic vinegar with walnut oil; cranberry pear white balsamic with lemon or walnut oil; and either basil or rosemary olive oil with Sicilian lemon white balsamic.

- 3 C. cooked chicken, diced
- ¾ C. apples, diced
- ½ C. celery, diced
- ½ C. green onion, chopped
- ¼ C. walnuts, chopped
- 2 Tb. balsamic vinegar
- 1½ Tb. extra virgin olive oil
- Salt and black pepper to taste

In a large bowl, add chicken, apple, celery, onions and walnuts. Toss well.

In a small bowl, whisk together oil and vinegar. Pour over salad. Season with salt and pepper. Mix well.

Makes 4-6 servings.

Singapore Noodles

A best seller at Foo to Go.

- 6 oz. fine, dry, rice vermicelli
- ½ C. chicken stock
- 2 Tb. soy sauce
- 2 tsp. sugar
- 1 tsp. hot chili paste
- 2 Tb. oyster sauce
- ½ tsp. salt
- 3 Tb. oil
- ½ lb. raw shrimp, shells removed
- 2 cloves garlic, minced
- ½ C. thinly sliced celery
- ½ C. sliced yellow onion
- 1½ Tb. Madras hot curry powder
- 4 fresh shiitake mushrooms, thinly sliced
- ½ C. sliced green bell pepper
- 6 oz. Chinese barbecued pork, cut into 2" thick pieces*

- 4 scallions, chopped
- ½ C. bean sprouts

*Note: If Chinese barbecued pork is not available, substitute cooked chicken breast or any leftover roasted meat.

Soak the rice noodles in warm water until soft, about 30 minutes. Drain and keep in a mixing bowl.

Mix the chicken stock, soy sauce, sugar, chili paste, oyster sauce and salt in a small bowl. Keep on the side.

Heat the oil in a 12" non-stick deep sauté pan. Add shrimp and cook until the color turns. Spoon the shrimp into a small bowl and keep on the side.

Add garlic, celery and onions in the same sauté pan. Cook until soft. Turn the heat to medium. Add curry powder and stir until it coats the vegetables. Add rice vermicelli, mushrooms, green pepper and soy-stock mixture. Stir and cook 5-7 minutes until the noodles are well combined with curry and vegetables.

Add shrimp, barbecued pork, scallions and bean sprouts. Stir and cook for 1-2 minutes.

Spoon the Singapore noodles into a large deep platter and serve warm or at room temperature.

Makes 6 servings.

Mushroom Agnolotti Salad

This toothsome salad is a best seller at Sassa-no's Gourmet to Go. Truffle oil is expensive, but you don't need much to give this dish a depth of flavor that's worth every cent.



- ½ C. pine nuts
- 2 lbs. mushroom agnolotti
- 1 C. extra virgin olive oil
- 1½ oz. white truffle oil

A Candy Store with a whole lot more

Scrumptious Chocolates & Candies, Great Gift Baskets for all Occasions

Making Life in Delco Sweeter For **27 Years**

610-359-1669 3519 West Chester Pike, Newtown Square, PA 19073

Where You Go, We Go



MFSB2GO Mobile Banking



A Rewarding Banking Experience.™



www.MalvernFederal.com



1½ C. chopped radicchio
2 C. chopped fresh spinach
1 C. sliced sundried tomatoes
¾ C. grated Parmesan cheese
Salt and pepper to taste

Toast the pine nuts: place pine nuts in a small skillet over medium heat and toast for 2-4 minutes, stirring occasionally, until nuts are lightly browned and fragrant. (Because pine nuts burn easily, keep a close watch on them.) Set aside.

Bring 8 quarts of water to a boil. Add mushroom agnolotti and cook for 10-12 minutes. When pasta is cooked, strain and rinse under cold water.

Whisk the two oils together in a large bowl. Add pasta, pine nuts, radicchio, spinach and sundried tomatoes and toss. Mix in Parmesan. Season with salt and pepper.

Makes 6-8 servings. Serve warm or at room temperature.

Steak Salad with Balsamic Onions

It's worth throwing an extra steak or two on the grill so you can make this salad the next day. Toss with either Green Goddess or Creamy Garlic Dressing (recipes below).

2 medium onions, cut into ¼" slices
2 Tb. balsamic vinegar
3 Tb. olive oil
½ tsp. salt
4-6 handfuls of mixed greens
2 C. cooked steak pieces (about ½"), room temperature
2 tomatoes, cut into small cubes
1 cucumber, sliced
1 red pepper, cut into strips

Toss onion slices with vinegar, oil and salt. In a frying pan, cook over medium

heat for 10-15 minutes until softened, stirring occasionally. Allow to cool slightly.

Divide greens, tomatoes, cucumber and red pepper among 4-6 plates. Top with onions and drizzle dressing over.

Makes 4-6 servings.

Green Goddess Dressing

In Lari Robling's 2003 cookbook Endangered Recipes: Too Good to Be Forgotten, Robling gives the history of this dressing (see sidebar) and wonders how such a creamy, herb-packed wonder could have been forgotten. I guess today's chefs agree with her because it's starting to appear on menus again. Here's my take on this classic.

1 small garlic clove, peeled
1 C. Italian parsley (mostly leaves), packed tightly
1 scallion, roughly chopped
2 Tb. red or white wine vinegar or more to taste
1 Tb. fresh tarragon, chopped
½ C. chives, roughly chopped
1 tsp. anchovy paste
½ C. mayonnaise
½ C. sour cream

Cut garlic clove in half lengthwise. (If there's a green "germ" in the center, remove it or it will give the dressing a bitter taste.) Put garlic, parsley, scallion, vinegar, tarragon, chives and anchovy paste in a blender or food processor and pulse until herbs and scallion are finely minced. (You want the mixture to look like pesto rather than a purée.)

Add mayonnaise and sour cream and pulse until just combined. Refrigerate to let flavors develop.

Makes 1 cup.

Creamy Garlic Dressing

I adapted this recipe from Real Simple's recipe for garlic aioli.

1-2 sm. garlic cloves, depending on taste
1 tsp. Dijon mustard
1 tsp. red wine vinegar
1 egg yolk
1 C. extra virgin olive oil
1 ½ tsp. lemon juice
2 Tb. water
½ tsp. kosher salt
Pinch of sugar, optional
Pepper to taste
3-4 Tb. (or more) Half-and-Half

Cut garlic clove(s) in half. (If there's a green "germ" in the center, remove it or it will give the dressing a bitter taste.) Over a medium-sized bowl, push garlic through a garlic press. Add mustard, vinegar and egg yolk and whisk to combine.

Whisking constantly, add oil in a thin, steady stream until completely combined and thickened. (Your hand might get tired as you will be whisking for 5 minutes or more!) Whisk in lemon juice, one tablespoon of water at a time, salt, sugar and pepper.

At this point, you have aioli, which is great for spreading on sandwiches or as a dip for vegetables.

To turn the aioli into dressing, whisk in Half-and-Half, one tablespoon at a time, until you reach desired consistency.

Makes approximately 1½ C.

Asian Chicken Salad

Because this salad brings together so many textures and flavors, you really don't need anything else for dinner!



2 pkg. Ramen noodles
⅓ C., plus 2 Tb. olive oil, divided
1 lb. boneless, skinless chicken breasts
Salt
2 cloves garlic, pressed
⅓ C. sesame oil

⅓ C., plus 3 Tb., rice vinegar
3 Tb. soy sauce
Pinch of sugar
1, 14-oz. package coleslaw mix
1 red pepper, julienned
½ C. sunflower seeds
¾ C. chopped cilantro

Place Ramen noodles in a large plastic bag and squeeze bag to crush noodles into small pieces. Heat 2 tablespoons olive oil over medium heat. Cook noodles until golden brown, 3-5 minutes. Set aside.

Place chicken breasts in a high-sided pan. Cover with water and pinch of salt. Bring to a simmer and cook through. Allow to cool in water. Shred chicken. (You'll have about 2 ½ C.)

While chicken cooks, make the dressing: whisk together garlic, sesame oil, remaining ⅓ cup olive oil, vinegar, soy sauce, salt and pepper to taste.

Toss chicken with coleslaw mix, red pepper, ramen noodles and dressing. Mix in cilantro.

Put in refrigerator for a half hour or more to let flavors develop. Serve with sunflower seeds.

Makes 8-10 servings.

Shrimp Cocktail Exotique

I adapted this recipe from Zanne Early Stewart who published it in Gourmet Magazine, August 1996. Stewart calls for 1½ Tb. cognac in the sauce and orange sections in the salad, but I like it without the cognac and replace the oranges with either grape tomatoes or cucumbers.

For the dressing:

½ C. mayonnaise
3 Tb. ketchup
2 tsp. fresh lime juice
½ tsp. sugar
Pinch of cayenne
Salt and pepper to taste

For the salad:

1½ lb. cooked shrimp, shelled, deveined, tails-on
1 pint grape tomatoes or 1 cucumber, peeled, seeded, cut into medium dice
3 firm (but ripe) avocados, medium dice
6 hearts of palm, cut into ½" pieces
6 C. mixed baby greens

Mix dressing ingredients together and set aside.

Gently combine shrimp, tomatoes/cucumbers, avocado and heart of palm.

Divide greens among 6 plates. Mound shrimp mixture on top and drizzle the dressing over top.

Makes 6 servings.

Marla's Famous Taboule Salad

Marla was my roommate when we were students at a summer seminar in New York. We divided our time between the library and the kitchen of our small apartment. My best memories of that summer revolve around the dishes Marla taught me to make.

1 box Near East Taboule
Wheat Salad Mix
Juice from 1½ lemons
1 bunch mint, chopped
1 bunch Italian parsley, chopped
½ C. fresh dill, chopped (optional)
3 tomatoes, cut into medium dice
1 cucumber, cut into medium dice
1 small or ½ Bermuda onion, finely chopped
½ C. pitted Calamata olives
½ to 1 C. crumbled feta cheese

Follow the directions on the taboule box about soaking the grain and adding the spice packet.

Add lemon juice, herbs, tomatoes, cucumber and onion.

When ready to serve, garnish with olives and feta cheese.

Makes 6-8 servings. ♦

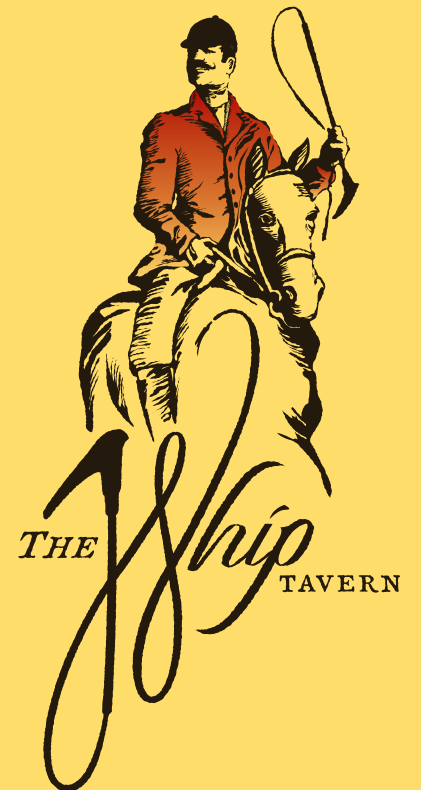
Laura traces her love of all things culinary to the first time she leafed through her mother's Betty Crocker's Cooky Book—which still occupies a place of honor among her 600+ cookbooks. A passionate supporter of local food, she co-founded a farmers market, judges area food contests, and anticipates restaurant openings with the excitement most people reserve for winning a Mega Millions jackpot.

To contact Laura, please e-mail her at LauraBrennan@ValleyDel.com.



For more great recipes visit
Foodily.com/u/CountyLinesMagazine

OPEN SEASON



Ah, springtime: daffodils, chirping birds and the opening of the outdoor patio at The Whip Tavern. Join us to welcome warmer weather while enjoying excellent British pub fare and a fine selection of beers and ales.

OPEN 11:00AM ~ MIDNIGHT
CLOSED TUESDAY
1383 NORTH CHATHAM ROAD
WEST MARLBOROUGH, PENNSYLVANIA 19320
610.383.0600
thewhiptavern.com



THE 22ND RUNNING OF THE WILLOWDALE STEEPLECHASE *Sunday, May 11th, 2014*



A Mother's Day Tradition



The
Willowdale Steeplechase

General Admission tickets:

\$25 per person in advance, \$30 per person race day.
Children under 12 are admitted free of charge.

For more information call 610.444.1582 or go to
www.willowdale.org. Races run rain or shine.

PHOTOGRAPHY BY JIM GRAHAM



Wish You Were There

At some of the best fundraisers, galas,
and local events of the season.



The Philadelphia Antiques Show Preview Party

Gourmet fare and spirits added to the festive atmosphere as
guests gathered for the first opportunity to view select antiques
and decorative arts on April 25 to benefit Penn Medicine.



Paoli Hospital's Taste of Spring Luncheon & Fashion Show

Everyone had a glimpse of the newest
summer styles at the Paoli Hospital benefit,
held at Waynesborough Country Club.



"Night at the Derby"

Guests enjoyed an elegant reception, gourmet dinner, horse
races, silent and live auctions, and prizes at the annual fund-
raiser for the Domestic Violence Center of Chester County,
with hostess Tracy Davidson from NBC10.



Chester County Antiques Show

A record crowd sipped cocktails, tasted delicious hors d'oeuvres
(by Jimmy Duffy Catering) and perused exceptional 18th- and
19th- century antiques at the Preview Party held at The Phelps
School for the benefit of the Chester County Historical Society.



The Delaware Center for Horticulture Rare Plant Auction

Collectors throughout the region bid on rare and
newly-introduced specimens at the gala event, staged
against the beautiful backdrop of Longwood Gardens.

PHOTO: ROB CARDILLO

Index to Advertisers

County Lines is available at the following advertisers. See our Resource Guides on **CountyLinesMagazine.com**.

A Taste of Britain.....	46	Demuth Museum	32
ABKToday	3	Devon Construction Mgmt LLC	29
The Agnes Irwin School.....	31	Devon Horse Show & Country Fair.....	20
AME Salon & Spa.....	46	The Devon Senior Living	12
AquaVita.....	71	DuPont Theatre.....	33
B & D Builders	76	Dutchie's Stone Works, LLC.....	76
B. Ray Thompson Jr., Real Estate.....	22	Eaves.....	45
Bayada Home Health Care.....	40	Element Six	45
BeLaro Jewelers.....	59	Episcopal Academy	30
Berkshire Hathaway Fox Roach / Country Prop ..	13	Exton Senior Living.....	87
Berkshire Hathaway Fox Roach / H. Gross	7	Flowing Springs Landscape Design	72
Berkshire Hathaway Fox Roach / M. Schwartz.....	8	Gateway Medical Associates.....	10
Berkshire Hathaway Fox Roach /		Gie Gie Lingerie & Breast Care	83
J. Pecknoe, J. Franklin	27	Giuseppe Kitchens & Baths.....	76
Black Powder Tavern	47	Glow Boutique	59
Boyles Floor & Window Designs.....	87	Griffiths Construction, Inc.	81
Brandywine Fine Prop./Sotheby's		Heritage Design Interiors, Inc.....	74
K. Nader, B. Jones	11	Herr Foods.....	84
Brandywine Museums & Gardens Alliance	25	Hershey's Mill	87
Brandywine River Museum.....	62	Horst Insurance	34
Cellarium Wine Racking	18	The Inn & Spa at Intercourse.....	90
Chefanti	84	Key Financial	9
Chester County Hearth & Home.....	36	King Construction	36
Chic & Simple Resale.....	59	Land & Seascapes	45
Christopher Chocolates/Fine Foods	93	Layton Preparatory School	32
Warren Claytor Architects.....	46	LeBeau Landscapes LLC	71
James A. Cochrane, Realtor.....	63	Carole Lee Interiors.....	81
Alison Conklin Photography.....	46	Hugh Lofting Timber Framing	40
Community Arts Center	32	Long & Foster / L. Isen	16
Walter J. Cook, Jeweler	4	Lucky Duck Toys	45
Creative Nook.....	Inside Front Cover	Madsen Kitchens & Bathrooms.....	39
Crozer-Keystone Health System	6	Main Line Health Systems.....	5
Delaware Art Museum.....	32	Malvern Federal Savings Bank.....	93
		Malvern Preparatory School.....	31
		Malvern Saddlery	61
		Matlack Florist	81
		John Milner Architects, Inc.....	34
		Mostardi Nursery	74
		New Meadow Farm.....	63
		Nittany Valley Offset.....	94
		Nota Bene Boutique	59
		Olde Bulltown Village.....	15
		Penn Liberty Bank	90
		PA Cyber Charter School	31
		Polka Dots	19
		Precise Buildings LLC	73
		R-P Nurseries.....	71
		Radnor Hunt Races	68
		Ron's Original Bar & Grille.....	88
		Robert Ryan Catering & Design	86
		Shop Chester County	71
		Shutter Tech, Inc.....	28
		Stoltzfus Enterprises Ltd.....	15
		Stoltzfus Feed.....	63
		Sugarbridge Kitchen & Bath	Outside Back Cover
		Surrey Consignment Shop	87
		Sylvan Stoltzfus Builders LLC	39
		Tavola Restaurant.....	88
		Thorncroft Equestrian	67
		E.C. Trethewey Building Contractors, Inc.	70
		Vox Ama Deus	26
		WCHE 1520 AM	98
		Waterbury Kitchen & Bath	Inside Back Cover
		Wayne Art Center	45
		Welcome Neighbor	98
		The Whip Tavern.....	95
		White Horse Construction, Inc.....	67
		Willistown Conservation Trust.....	67
		Willowdale Steeplechase.....	96
		Wilmington Friends School.....	31
		Witmer Quilt Shop	87
		Wolff's Apple House	84

This Index is provided as an additional service to our advertisers. County Lines takes no responsibility for errors.



Tune into Chester County's
community radio station



**THE WCHE
MORNING MAGAZINE**

weekday mornings 7-10am



Find us on
Facebook



FOLLOW US ON
twitter

www.WCHE1520.com

Welcome Neighbor!



Our sponsors make it possible!

It is through the thoughtfulness and caring of many fine local businesses and professionals that our visits to new-comers and other celebrants are made possible.

We have some room in our basket for
a few more sponsors.

You can learn about Welcome Neighbor and our unique
personal promotion service at our web site:

www.welcomeneighbor.us

Request Our Power Point Presentation:

610-358-0580



WATERBURY
KITCHEN AND BATH, INC.

818 EAST BALTIMORE PIKE, KENNETT SQUARE, PA 19348 • 610.444.9192 • waterburysdesign.com